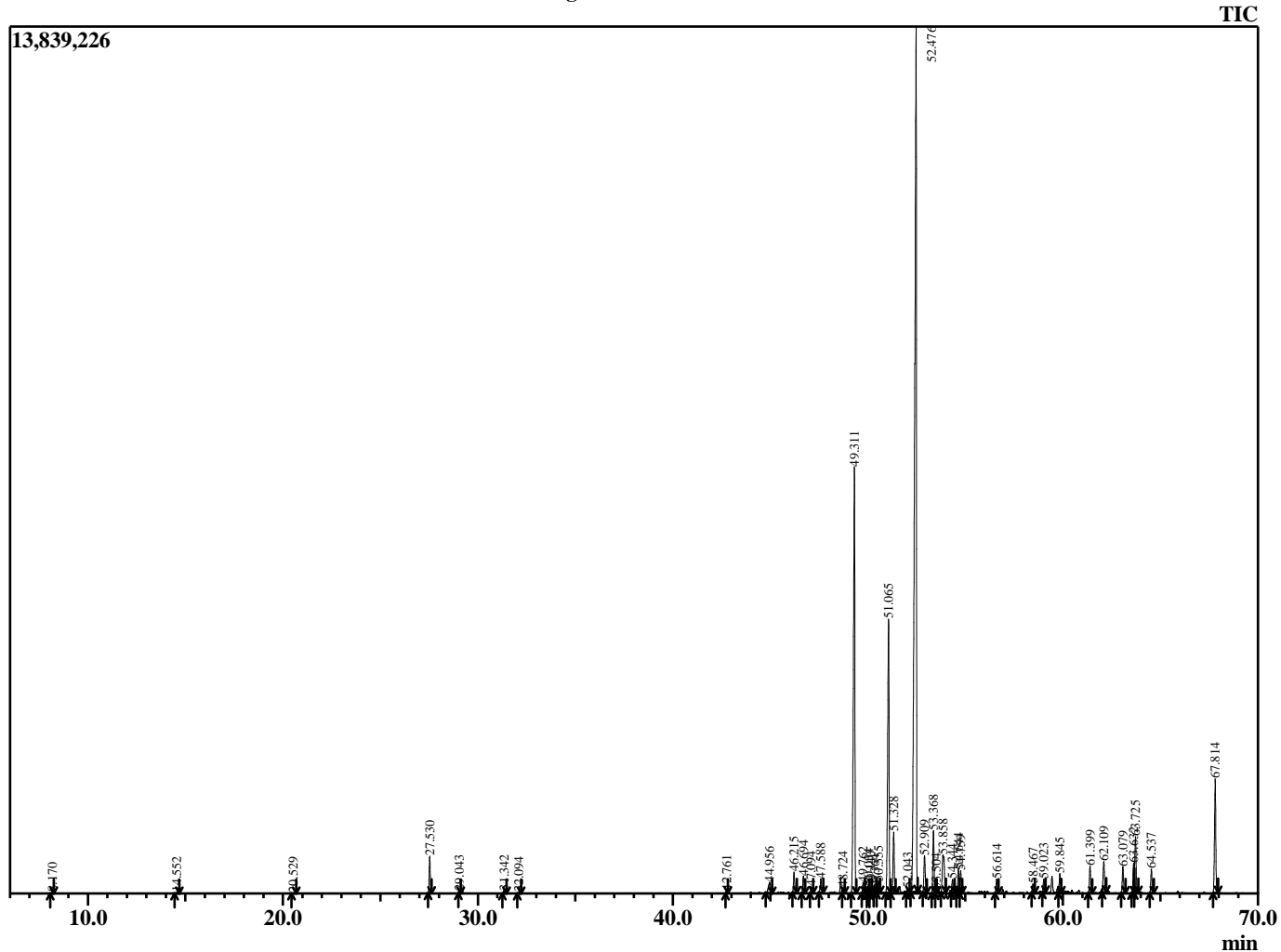


### Sample Information

Analyzed by : B. Harris  
 Analyzed : 5/27/2015 9:14:36 PM  
 Sample Type : Essential Oil  
 Sample Name : CedAtl2  
 Lot Number : 12182  
 Injection Volume : 0.10

Chromatogram CedAtl2 Lot 12182



R.Time	Name	Area%
8.170	3-Penten-2-one, 4-methyl-	0.03
14.552	Pinene <alpha>	0.03
20.529	Limonene	0.01
27.530	4-Acetyl-1-methylcyclohexene	1.03
29.043	1-(4-Methyl-3-cyclohexen-1-yl) ethanol	0.05
31.342	Acetophenone <4'-methyl->	0.08
32.094	Terpineol <alpha>	0.03
42.761	Longipinene<alpha>	0.07
44.956	Isolongifolene <4,5-dehydro>	0.63
46.215	Gurjunene <alpha>	0.69
46.694	Longifolene	0.55
47.094	Cedrene <alpha>	0.21
47.588	Himachalene isomer	0.57
48.724	Himachalene isomer	0.18
49.311	Himachalene <beta>	16.55
49.762	Longifolene isomer	0.33
50.034	Longifolene isomer	0.28
50.140	Dehydroisolongifolene isomer	0.17
50.364	Himachala-1,4-diene isomer	0.09
50.555	Himachalene isomer	0.43
51.065	Himachalene <gamma>	10.28
51.328	Himachala-1,4-diene <1aH>	2.04
52.043	Bicyclogermacrene	0.17
52.476	Himachalene <alpha>	45.41
52.909	Himachalene <a-dehydro-ar>	1.29
53.368	Cadinene <delta>	2.10
53.504	Calamenene <cis>	0.11
53.858	Neoisolongifolene <8,9-dehydro>	2.14
54.344	Neoisolongifolene isomer	0.44
54.644	Bisabolene isomer	0.75
54.759	Calacorene <alpha>	0.70
56.614	Cycloisolongifolene	0.48
58.467	Longiborneol	0.28
59.023	Longipinocarveol, trans-	0.43
59.845	Cubebol<1-epi>	0.65
61.399	Bisabolol <alpha>	0.93
62.109	Acorneol <alpha>	1.16
63.079	Tumerone isomer	0.88
63.632	Deodarone	0.96
63.725	Ar-Tumerone	2.13
64.537	Altanone isomer	0.78
67.814	Altanone	3.89
		100.00