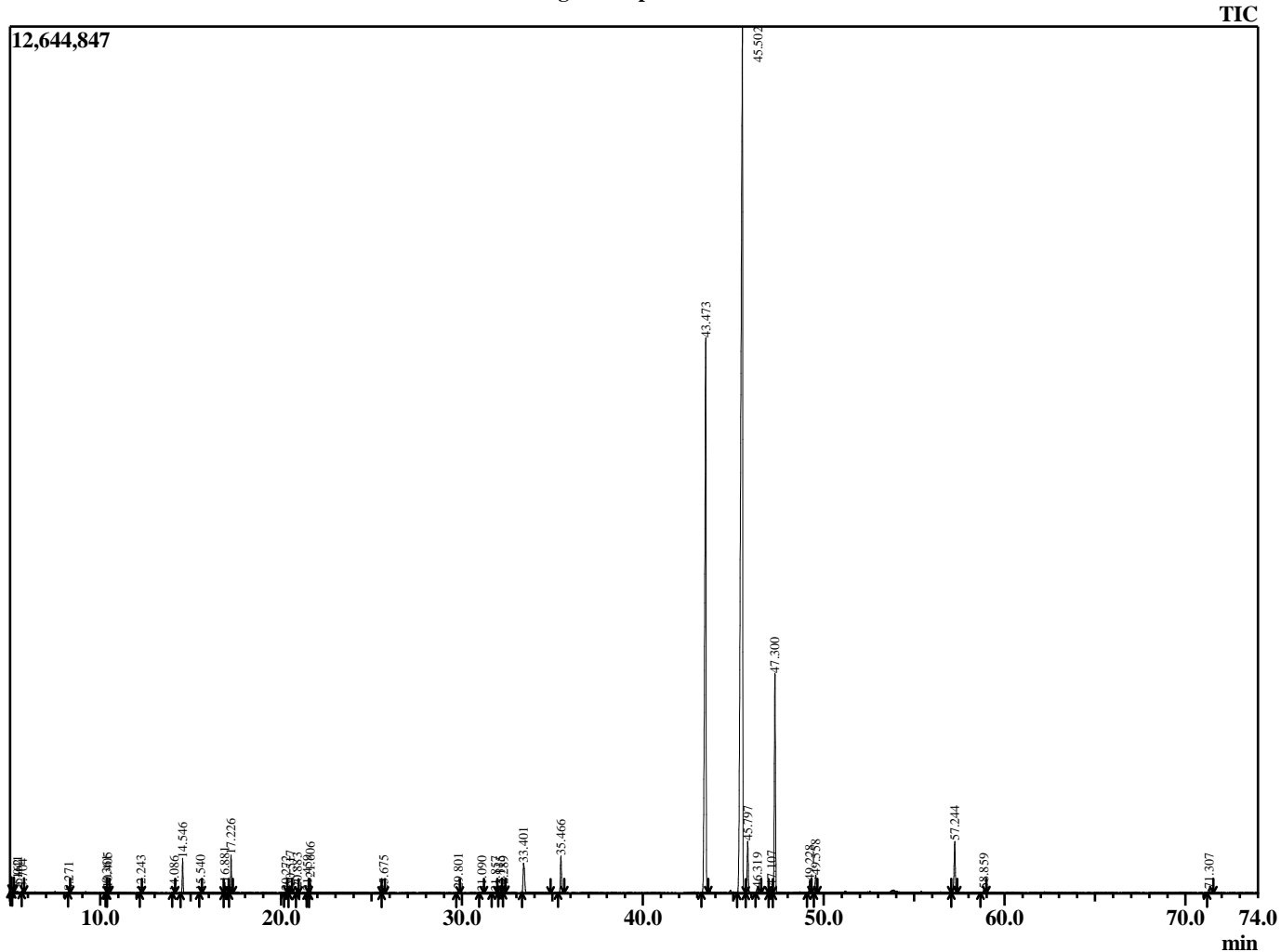


Sample Information

Analyzed by : B. Harris
 Analyzed : 12/12/2014 7:57:49 PM
 Sample Type : Essential Oil
 Sample Name : NepCat2
 Lot Number : 140624
 Injection Volume : 0.10

Chromatogram NepCat2 Lot 140624



R.Time	Name	Area%
5.041	Butanal, 3-methyl-	0.07
5.162	Butanal, 2-methyl	0.04
5.704	Furan, 2-ethyl-	0.06
8.271	Hexanal	0.03
10.361	2-Hexenal	0.02
10.405	3-Hexen-1-ol, (Z)-	0.14
12.243	Styrene	0.04
14.086	Thujene <alpha->	0.02
14.546	Pinene <alpha->	0.97
15.540	Camphene	0.02
16.881	Sabinene	0.29
17.226	Pinene <beta->	1.00
20.272	Cymene <para->	0.05
20.517	Limonene	0.21
20.883	Ocimene <Z-beta>	0.14
21.459	Phenylacetaldehyde	0.04
21.606	Ocimene <E-beta>	0.59
25.675	Nonanal	0.09
29.801	Lavandulol	0.14
31.090	Terpinen-4-ol	0.02
31.857	Methyl salicylate	0.04
32.115	Terpineol <alpha->	0.03
32.289	Carvone <dihydro-cis>	0.02
33.401	Catnip unknown	1.51
35.466	Carvone	1.19
43.473	Nepetalactone <4a alpha,7alpha,7a-alpha>	25.03
45.502	Nepetalactone <4a-alpha,7-beta,7a-alpha>	51.95
45.797	Nepetalactone isomer	2.00
46.319	Caryophyllene <cis>	0.19
47.107	Dihydroisonepetalactone	0.26
47.300	Caryophyllene <trans>	10.22
49.228	Farnesene <(E)-, beta->	0.47
49.558	Humulene <alpha>	0.67
57.244	Caryophyllene oxide	2.08
58.859	Humulene epoxide II	0.16
71.307	Phytone	0.20
		100.00