

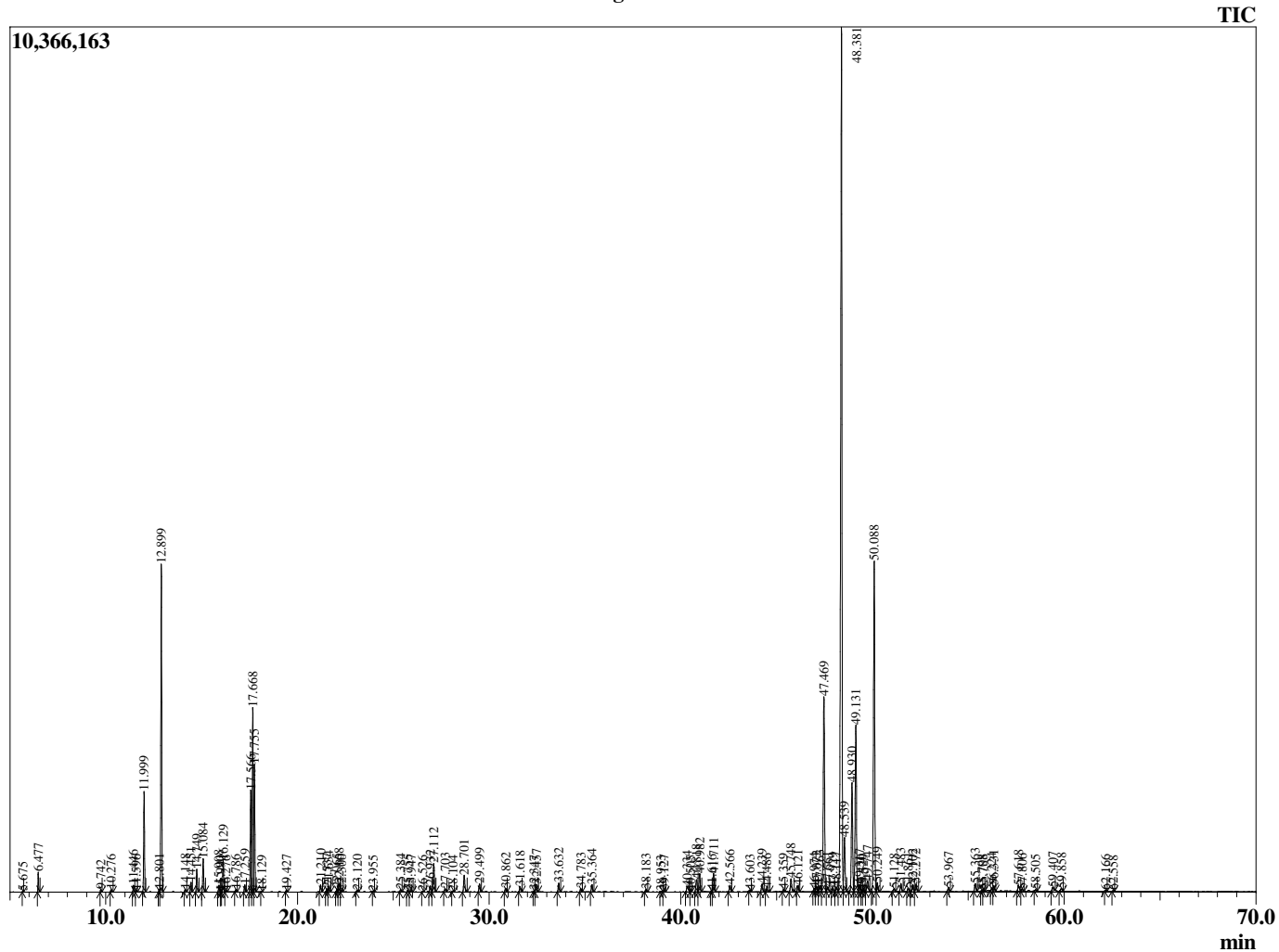
Sample Information

Analyzed by : T. Wortham
 Analyzed : 6/17/2019 8:34:37 PM
 Sample Type : Essential Oil
 Sample Name : ZinOff1
 Injection Volume : 0.10
 Lot Number : F0C0614A
 Instrument ID : GC-3

Peak Report TIC

R.Time	Name	Area%
5.675	Toluene	0.01
6.477	Hexanal	0.35
9.742	2-Heptanone	0.06
10.276	2-Heptanol	0.06
11.446	Tricyclene	0.15
11.596	alpha-Thujene	0.04
11.999	alpha-Pinene	2.33
12.801	alpha-Fenchene	0.06
12.899	Camphene	7.94
14.148	Sabinene	0.07
14.451	beta-Pinene	0.24
14.749	6-Methyl hept-5-en-2-one	0.56
15.084	Myrcene	0.85
15.908	Octanal	0.18
15.990	Unidentified	0.02
16.129	alpha-Phellandrene	0.81
16.276	delta-3-Carene	0.03
16.786	alpha-Terpinene	0.06
17.259	para-Cymene	0.19
17.566	Limonene	2.76
17.668	beta-Phellandrene	5.12
17.755	1,8-Cineole	3.27
18.129	Unidentified	0.02
19.427	gamma-Terpinene	0.04
21.210	Terpinolene	0.20
21.537	2-Nonanone	0.09
21.634	Rosefuran	0.17
22.065	Unidentified	0.09
22.168	Linalool	0.26
22.300	Nonan-2-ol	0.05
23.120	Unidentified	0.06
23.955	Unidentified	0.02
25.384	Camphor	0.06
25.755	Citronellal	0.05
25.947	trans-beta-Terpineol	0.06
26.526	Unidentified	0.02
26.932	Isoborneol	0.18
27.112	Borneol	0.88
27.703	Terpinen-4-ol	0.10
28.104	para-Cymen-8-ol	0.02
28.701	alpha-Terpineol	0.55
29.499	Decanal	0.25
30.862	Citronellol	0.11
31.618	Neral	0.16
32.347	Unidentified	0.03
32.457	Geraniol	0.24
33.632	Geranial	0.28
34.783	Bornyl acetate	0.11
35.364	2-Undecanone	0.24
38.183	delta-Elemene	0.08
38.953	alpha-Cubebene	0.01
39.127	Citronellyl acetate	0.06
40.334	Isodene	0.26
40.505	Unidentified	0.02
40.818	alpha-Copaene	0.42
40.982	Geranyl acetate	0.60
41.616	beta-Cubebene	0.04
41.711	beta-Elemene	0.63
42.566	cis-alpha-Bergamotene	0.22
43.603	beta-Caryophyllene	0.04
44.239	gamma-Elemene	0.27
44.486	trans-alpha-Bergamotene	0.12

Chromatogram ZinOff1



© Copyright 2019 The Perfumery, All rights reserved.

This report is provided as a courtesy to our customers for their evaluation only. Any publishing, copying, use, dissemination, or distribution of this report, including online, without the express written permission of The Perfumery is strictly prohibited. To inquire about licensing analytical reporting services, please contact orders@theperfumery.com.

R.Time	Name	Area%
45.359	Unidentified	0.06
45.748	trans-beta-Farnesene	0.49
46.121	Alloaromadendrene	0.20
46.974	Selina-4,11-diene	0.11
47.072	trans-Cadina-1(6),4-diene	0.20
47.263	gamma-Curcumene	0.24
47.469	Ar-Curcumene	7.26
47.661	Unidentified	0.20
47.929	beta-Selinene	0.12
48.117	(Z,Z)-alpha-Farnesene	0.18
48.381	alpha-Zingiberene	31.88
48.539	trans-Muurolo-4(14),5-diene	1.90
48.930	(E,E)-alpha-Farnesene	3.70
49.131	beta-Bisabolene	6.04
49.317	Unidentified	0.26
49.420	Unidentified	0.03
49.529	Unidentified	0.04
49.747	Selina-3,7(11)-diene	0.50
50.088	beta-Sesquiphellandrene	11.53
50.249	trans-gamma-Bisabolene	0.32
51.128	Unidentified	0.10
51.483	Elemol	0.27
51.861	cis-Sesquisabinene hydrate	0.12
52.102	Germacrene B	0.25
52.272	trans-Nerolidol	0.27
53.967	trans-Sesquisabinene hydrate	0.14
55.363	Zingiberenol	0.27
55.708	Unidentified	0.03
55.788	10-epi-gamma-Eudesmol	0.05
56.224	Unidentified	0.10
56.331	Unidentified	0.17
57.618	beta-Eudesmol	0.25
57.806	Unidentified	0.09
58.505	Unidentified	0.04
59.407	11-alpha-H-Himachal-4-en-1-beta-ol	0.14
59.858	Unidentified	0.12
62.166	Unidentified	0.03
62.558	Unidentified	0.02
		100.00