

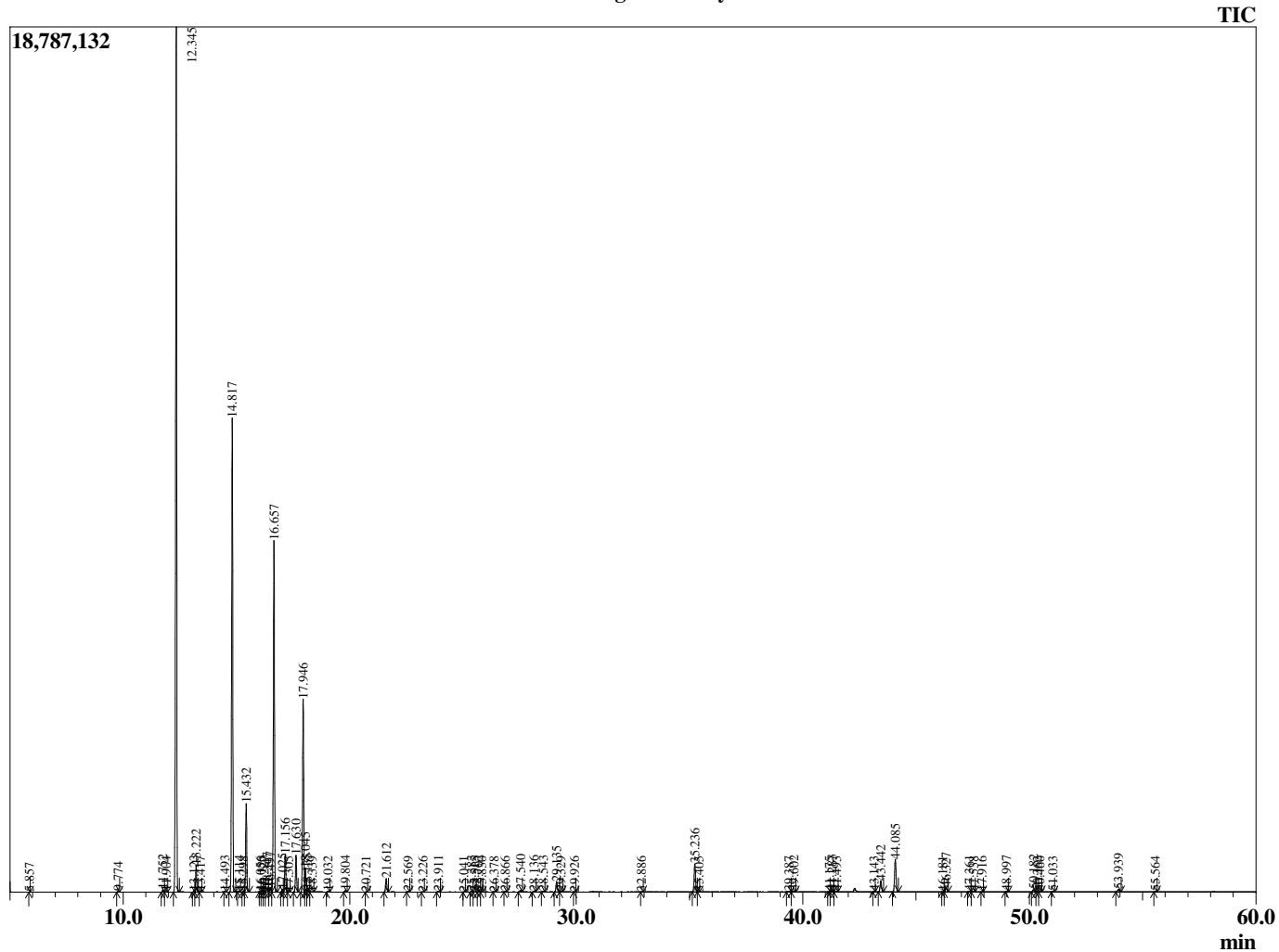
Sample Information

Analyzed by : T. Wortham
 Analyzed : 11/30/2018 7:31:06 PM
 Sample Type : Essential Oil
 Sample Name : PinSyl1
 Injection Volume : 0.10
 Lot Number : D0B1127L
 Instrument ID : GC-3

Peak Report TIC

R.Time	Name	Area%
5.857	Toluene	0.00
9.774	Santene	0.04
11.752	Tricyclene	0.09
11.904	alpha-Thujene	0.02
12.345	alpha-Pinene	37.53
13.123	alpha-Fenchene	0.05
13.222	Camphene	1.07
13.417	Thuja-2,4(10)diene	0.02
14.493	Sabinene	0.04
14.817	beta-Pinene	20.85
15.114	Camphene isomer	0.04
15.298	Unidentified	0.02
15.432	Myrcene	3.79
16.056	Terpinene isomer	0.02
16.123	1-para-Menthene	0.03
16.227	Unidentified	0.01
16.347	Pseudolimonene	0.17
16.497	alpha-Phellandrene	0.20
16.657	delta-3-Carene	15.75
17.025	1,4-Cineole	0.11
17.156	alpha-Terpinene	1.66
17.305	ortho-Cymene	0.02
17.630	para-Cymene	1.69
17.946	Limonene	8.93
18.045	beta-Phellandrene	0.99
18.135	1,8-Cineole	0.10
18.339	cis-beta-Ocimene	0.02
19.032	trans-beta-Ocimene	0.03
19.804	gamma-Terpinene	0.07
20.721	Pinol	0.01
21.612	Terpinolene	0.63
22.569	Linalool	0.02
23.226	Thujol isomer	0.02
23.911	alpha-Fenchol	0.05
25.041	Terpin-3-en-1-ol	0.01
25.383	trans-Pinocarveol	0.04
25.515	Unidentified	0.02
25.702	trans-Verbenol	0.07
25.830	Camphor	0.01
26.378	trans-beta-Terpineol	0.01
26.866	Unidentified	0.02
27.540	Borneol	0.09
28.136	Terpinen-4-ol	0.05
28.543	para-Cymen-8-ol	0.03
29.135	alpha-Terpineol	0.54
29.329	Estragole	0.02
29.926	Verbenone	0.01
32.886	Linalyl acetate	0.01
35.236	Bornyl acetate	1.54
35.405	Isobornyl acetate	0.01
39.387	alpha-Cubebene	0.05
39.602	alpha-Longipinene	0.06
41.175	Unidentified	0.02
41.283	alpha-Copaene	0.09
41.493	Unidentified	0.02
43.143	cis-beta-Caryophyllene	0.01
43.442	Junipene	0.65
44.085	beta-Caryophyllene	1.87
46.181	trans-beta-Farnesene	0.01
46.327	alpha-Humulene	0.23
47.361	10-beta-H-Cadina-1(6),4-diene	0.03
47.538	trans-Cadina-1(6),4-diene	0.02

Chromatogram PinSyl1



© Copyright 2018 The Perfumery, All rights reserved.

This report is provided as a courtesy to our customers for their evaluation only. Any publishing, copying, use, dissemination, or distribution of this report, including online, without the express written permission of The Perfumery is strictly prohibited. To inquire about licensing analytical reporting services, please contact orders@theparfumery.com.

R.Time	Name	Area%
47.916	Germacrene D	0.01
48.997	alpha-Muurolene	0.03
50.182	delta-Cadinene	0.12
50.362	cis-Calamenene	0.03
50.460	Zonarene	0.03
51.033	trans-Cadina-1,4-diene	0.02
53.939	Caryophyllene oxide	0.15
55.564	Humulene epoxide II	0.02
		100.00