

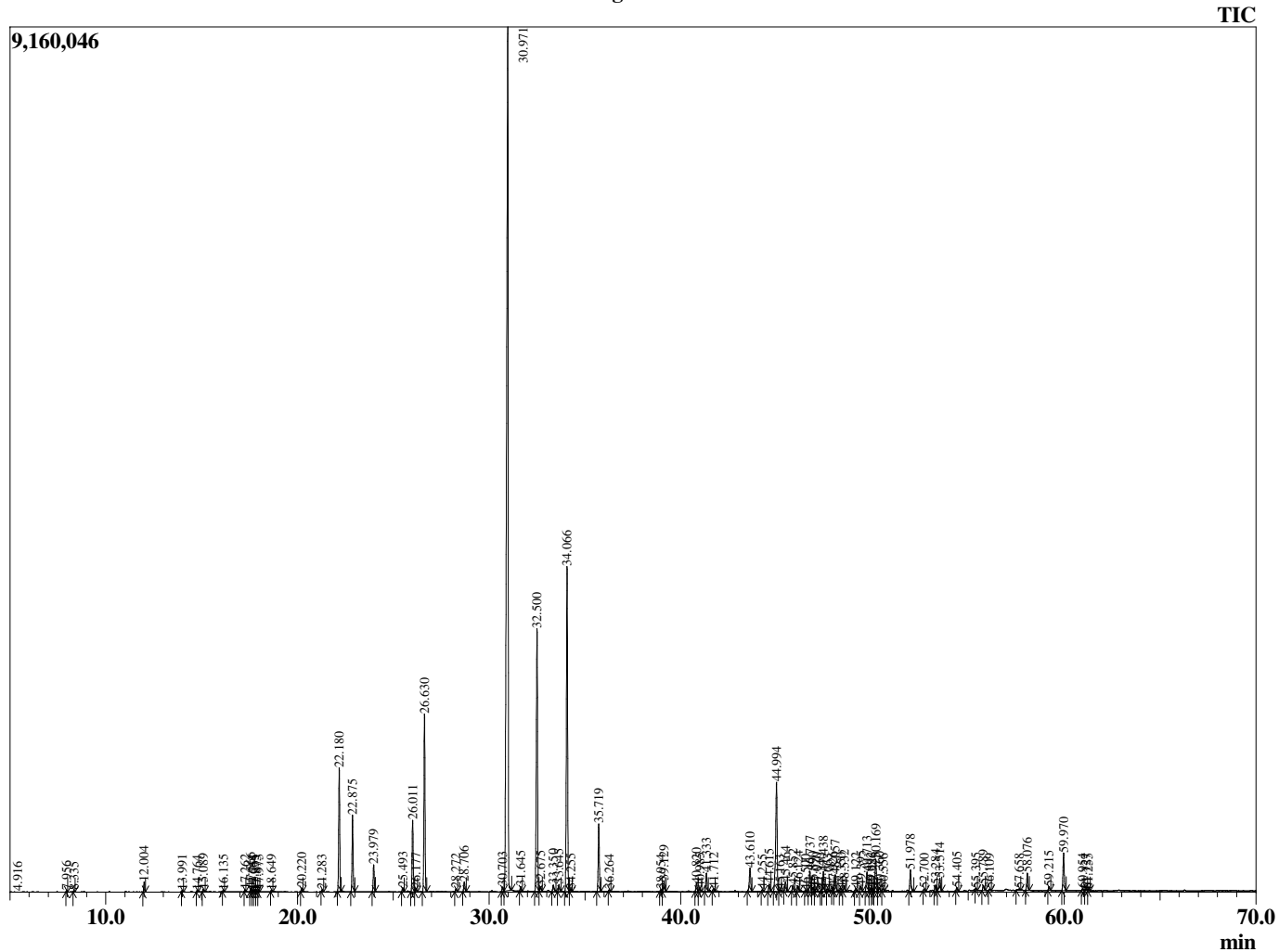
Sample Information

Analyzed by : T. Wortham  
 Analyzed : 7/11/2019 4:06:21 PM  
 Sample Type : Essential Oil  
 Sample Name : PelGra1  
 Injection Volume : 0.10  
 Lot Number : E0C0708B  
 Instrument ID : GC-3

Peak Report TIC

R.Time	Name	Area%
4.916	1-Pentanol	0.02
7.956	3-Methyl pentanol	0.04
8.335	Hex-3(Z)-enol	0.03
12.004	alpha-Pinene	0.24
13.991	Bois de Rose oxide	0.03
14.764	6-Methyl hept-5-en-2-one	0.03
15.089	Myrcene	0.09
16.135	alpha-Phellandrene	0.04
17.262	para-Cymene	0.04
17.566	Limonene	0.10
17.664	beta-Phellandrene	0.03
17.755	Unidentified	0.04
17.875	Unidentified	0.03
17.973	cis-beta-Ocimene	0.06
18.649	trans-beta-Ocimene	0.05
20.220	cis-Linalool oxide (furanoid)	0.11
21.283	trans-Linalool oxide (furanoid)	0.04
22.180	Linalool	3.75
22.875	cis-Rose oxide	2.38
23.979	trans-Rose oxide	0.84
25.493	Neoisopulegol	0.13
26.011	Menthone	2.38
26.177	Unidentified	0.12
26.630	Isomenthone	5.79
28.272	Isomenthol	0.10
28.706	alpha-Terpineol	0.33
30.703	Nerol	0.15
30.971	Citronellol	40.83
31.645	Neral	0.15
32.500	Geraniol	9.28
32.675	Unidentified	0.17
33.350	Myrtanol	0.25
33.645	Geranial	0.23
34.066	Citronellyl formate	11.17
34.255	Neryl formate	0.08
35.719	Geranyl formate	2.30
36.264	Myrtanyl acetate	0.05
38.954	alpha-Cubebene	0.06
39.129	Citronellyl acetate	0.39
40.820	alpha-Copaene	0.30
40.985	Geranyl acetate	0.14
41.333	beta-Bourbonene	0.66
41.712	beta-Elementene	0.10
43.610	beta-Caryophyllene	0.92
44.255	beta-Copaene	0.06
44.615	alpha-Guaiene	0.25
44.994	6,9-Guaiaadiene	4.70
45.163	Unidentified	0.06
45.464	Unidentified	0.34
45.852	alpha-Humulene	0.23
46.124	Alloaromadendrene	0.18
46.500	Unidentified	0.03
46.737	Geranyl propionate	0.68
46.890	10-beta-H-Cadina-1(6),4-diene	0.14
47.070	trans-Cadina-1(6),4-diene	0.12
47.340	alpha-Amorphene	0.06
47.438	Germacrene D	0.77
47.663	Unidentified	0.08
47.926	beta-Selinene	0.13
48.057	Viridiflorene (Ledene)	0.64
48.350	alpha-Selinene	0.13
48.532	alpha-Murolene	0.22

Chromatogram PelGra1



© Copyright 2019 The Perfumery, All rights reserved.

This report is provided as a courtesy to our customers for their evaluation only. Any publishing, copying, use, dissemination, or distribution of this report, including online, without the express written permission of The Perfumery is strictly prohibited. To inquire about licensing analytical reporting services, please contact orders@theperfumery.com.

R.Time	Name	Area%
49.122	Neryl butyrate	0.10
49.395	gamma-Cadinene	0.18
49.713	delta-Cadinene	0.76
49.892	cis-Calamenene	0.12
49.986	Zonarene	0.11
50.169	Citronellyl butyrate	1.19
50.360	Unidentified	0.15
50.556	trans-Cadina-1,4-diene	0.09
51.978	Geranyl butyrate	0.81
52.700	Unidentified	0.07
53.284	Unidentified	0.22
53.514	Phenethyl tiglate	0.55
54.405	Unidentified	0.11
55.395	1,10-di-epi-Cubenol	0.04
55.789	Maaliol	0.19
56.109	1-epi-Cubenol	0.06
57.658	alpha-Cadinol	0.10
58.076	(E)-Citronellyl tiglate	0.62
59.215	(Z)-Citronellyl tiglate	0.13
59.970	Geranyl tiglate	1.37
60.954	(2E,6E)-Farnesol	0.05
61.127	Geranyl hexanoate	0.04
61.255	Unidentified	0.05
		100.00