

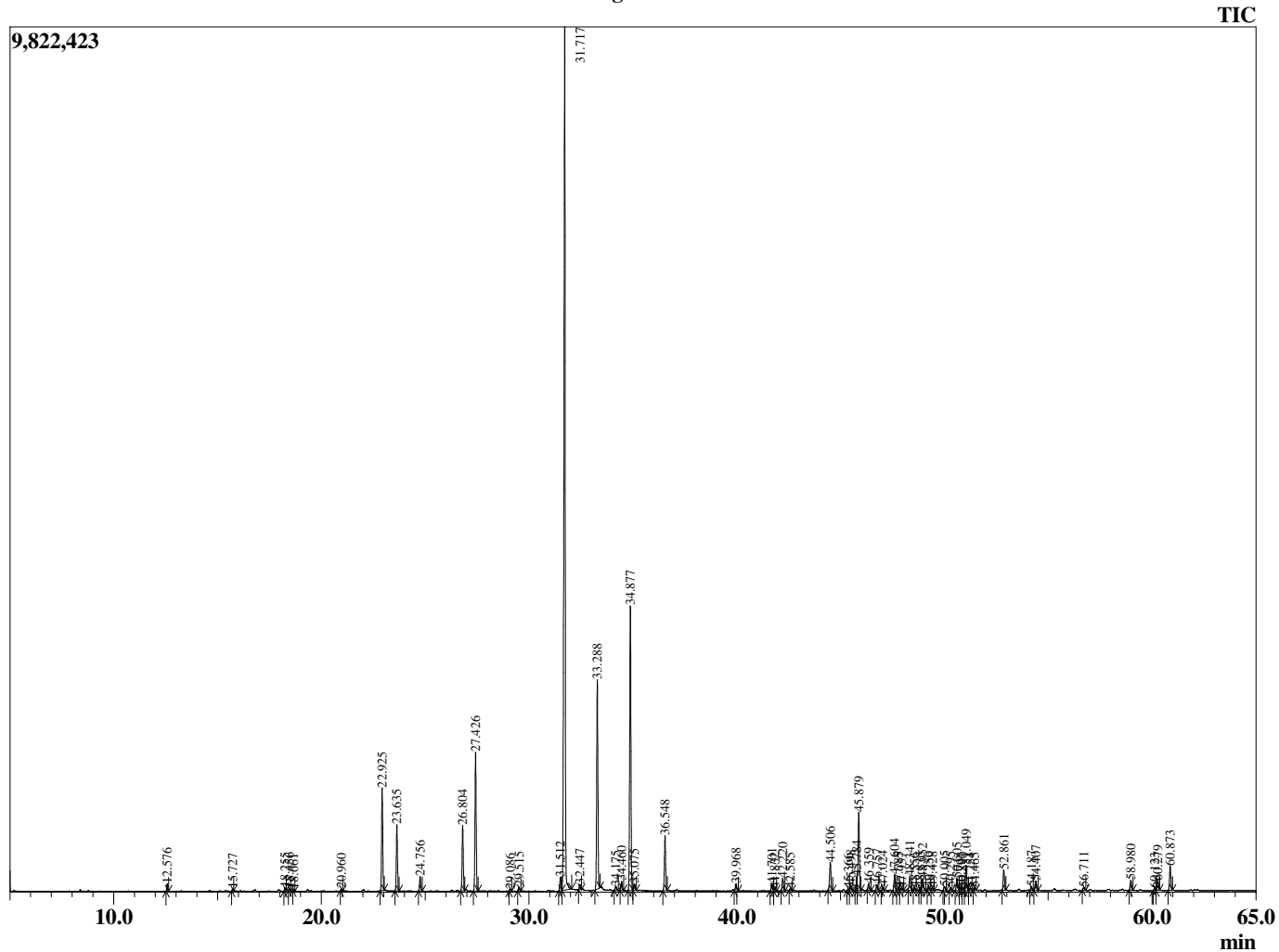
Sample Information

Analyzed by : T. Wortham
 Analyzed : 6/13/2018 7:55:59 PM
 Sample Type : Essential Oil
 Sample Name : PelGra1
 Injection Volume : 0.10
 Lot Number : 144529
 Instrument ID : GC-3

Peak Report TIC

R.Time	Name	Area%
12.576	alpha-Pinene	0.24
15.727	Myrcene	0.06
18.255	Limonene	0.10
18.456	1,8-Cineole	0.09
18.661	cis-beta-Ocimene	0.05
20.960	cis-Linalool oxide (furanoid)	0.07
22.925	Linalool	4.05
23.635	cis-Rose oxide	2.68
24.756	trans-Rose oxide	0.60
26.804	Menthone	2.71
27.426	Isomenthone	5.87
29.086	Isomenthol	0.07
29.515	alpha-Terpineol	0.17
31.512	Nerol	0.61
31.717	Citronellol	40.60
32.447	Neral	0.22
33.288	Geraniol	8.83
34.175	trans-Myrtanol	0.19
34.460	Geranial	0.38
34.877	Citronellyl formate	12.46
35.075	Neryl formate	0.29
36.548	Geranyl formate	2.35
39.968	Citronellyl acetate	0.32
41.701	alpha-Copaene	0.34
41.832	Geranyl acetate	0.10
42.220	beta-Bourbonene	0.59
42.585	beta-Elemene	0.08
44.506	beta-Caryophyllene	1.34
45.366	trans-alpha-Bergamotene	0.07
45.498	alpha-Guaiene	0.25
45.784	Citronellyl propionate	0.54
45.879	6,9-Guaiadiene	3.82
46.359	Unidentified	0.31
46.757	alpha-Humulene	0.27
47.024	Alloaromadendrene	0.17
47.604	Geranyl propionate	0.71
47.785	10-beta-H-Cadina-1(6),4-diene	0.16
47.957	trans-Cadina-1(6),4-diene	0.14
48.341	Germacrene D	0.68
48.556	Unidentified	0.11
48.835	beta-Selinene	0.13
48.952	Viridiflorene (Ledene)	0.58
49.250	alpha-Selinene	0.13
49.428	alpha-Murolene	0.12
50.005	beta-Bisabolene	0.19
50.295	gamma-Cadinene	0.12
50.605	delta-Cadinene	0.59
50.791	cis-Calamenene	0.10
50.890	Zonarene	0.11
51.049	Citronellyl butyrate	1.19
51.254	Unidentified	0.12
51.465	Unidentified	0.11
52.861	Geranyl butyrate	0.90
54.187	Unidentified	0.19
54.407	Phenylethyl tiglate	0.45
56.711	Unidentified	0.14
58.980	Citronellyl tiglate	0.47
60.123	Citronellyl tiglate isomer	0.08
60.279	alpha-Bisabolol	0.46
60.873	Geranyl tiglate	1.14
		100.00

Chromatogram PelGra1



© Copyright 2018 The Perfumery, All rights reserved.

This report is provided as a courtesy to our customers for their evaluation only. Any publishing, copying, use, dissemination, or distribution of this report, including online, without the express written permission of The Perfumery is strictly prohibited. To inquire about licensing analytical reporting services, please contact orders@theperfumery.com.