

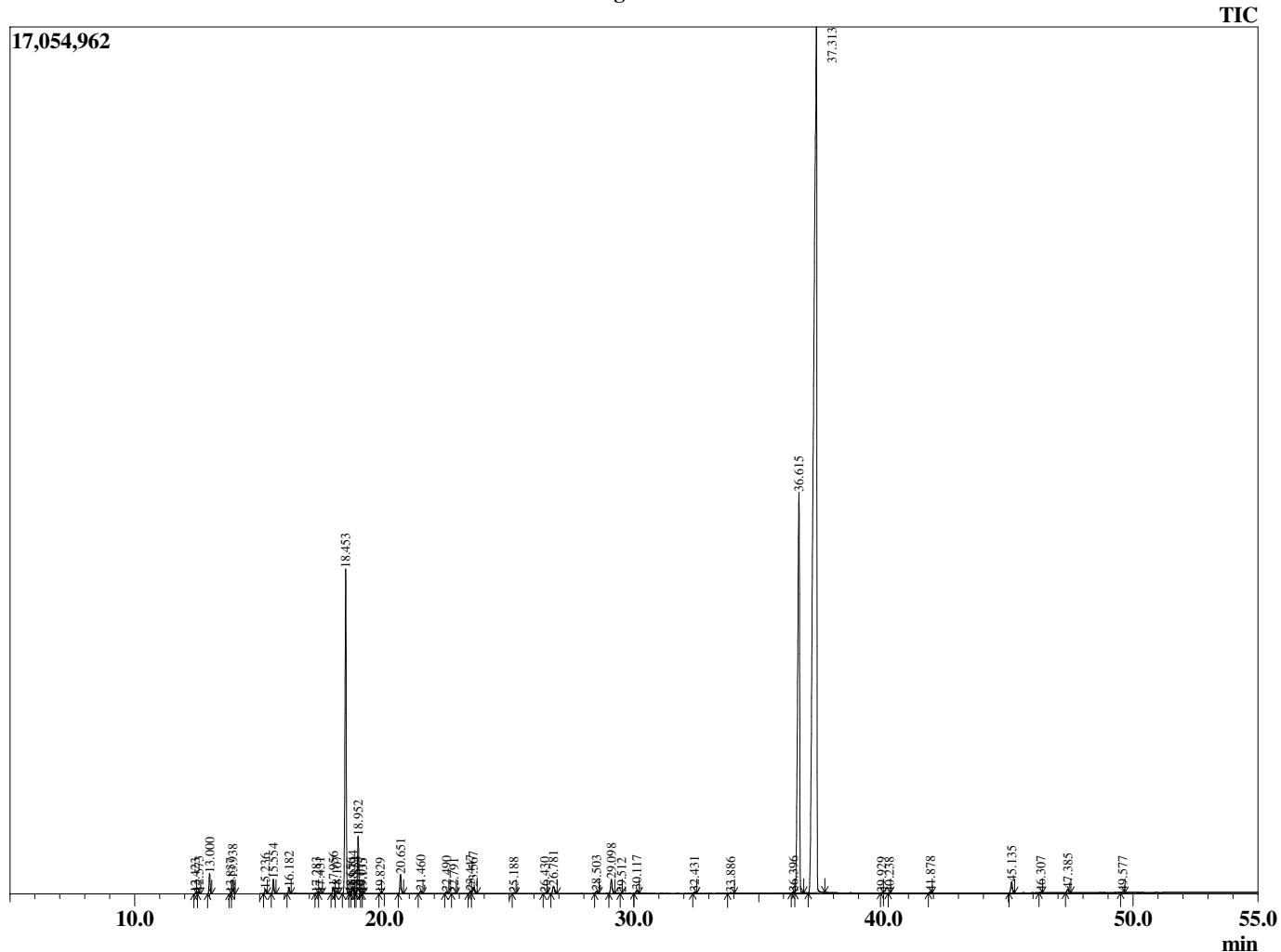
Sample Information

Analyzed by : T. Wortham
 Analyzed : 4/27/2020 12:04:59 PM
 Sample Type : Essential Oil
 Sample Name : OriVul1
 Injection Volume : 0.10
 Lot Number : G0D0427C
 Instrument ID : GC-3

Peak Report TIC

R.Time	Name	Area%
12.423	Tricyclene	0.01
12.573	alpha-Thujene	0.05
13.000	alpha-Pinene	0.53
13.837	alpha-Fenchene	0.02
13.938	Camphene	0.39
15.236	Sabinene	0.13
15.554	beta-Pinene	0.40
16.182	Myrcene	0.17
17.283	alpha-Phellandrene	0.02
17.431	delta-3-Carene	0.03
17.956	alpha-Terpinene	0.19
18.107	ortho-Cymene	0.05
18.453	para-Cymene	9.57
18.656	Unidentified	0.01
18.744	Limonene	0.22
18.854	beta-Phellandrene	0.03
18.952	1,8-cineole	1.72
19.077	meta-Cymene	0.01
19.135	cis-beta-Ocimene	0.01
19.829	trans-beta-Ocimene	0.01
20.651	gamma-Terpinene	0.58
21.460	trans-Sabinene hydrate	0.09
22.490	Terpinolene	0.06
22.791	para-Cymenene	0.01
23.447	Linalool	0.08
23.567	cis-Sabinene hydrate	0.28
25.188	cis-para-Menth-2-en-1-ol	0.03
26.430	trans-para-Menth-2-en-1-ol	0.02
26.781	Camphor	0.30
28.503	Borneol	0.08
29.098	Terpinen-4-ol	0.51
29.512	para-Cymen-8-ol	0.00
30.117	alpha-Terpineol	0.13
32.431	Thymol methyl ether	0.04
33.886	Linalyl acetate	0.05
36.396	Bornyl acetate	0.05
36.615	Thymol	17.92
37.313	Carvacrol	65.57
39.929	Unidentified	0.01
40.238	Thymol acetate	0.00
41.878	Unidentified	0.04
45.135	beta-Caryophyllene	0.41
46.307	Aromadendrene	0.03
47.385	alpha-Humulene	0.13
49.577	Viridiflorene (Ledene)	0.03
		100.00

Chromatogram OriVul1



© Copyright 2020 The Perfumery, All rights reserved.

This report is provided as a courtesy to our customers for their evaluation only. Any publishing, copying, use, dissemination, or distribution of this report, including online, without the express written permission of The Perfumery is strictly prohibited. To inquire about licensing analytical reporting services, please contact orders@theperfumery.com.