

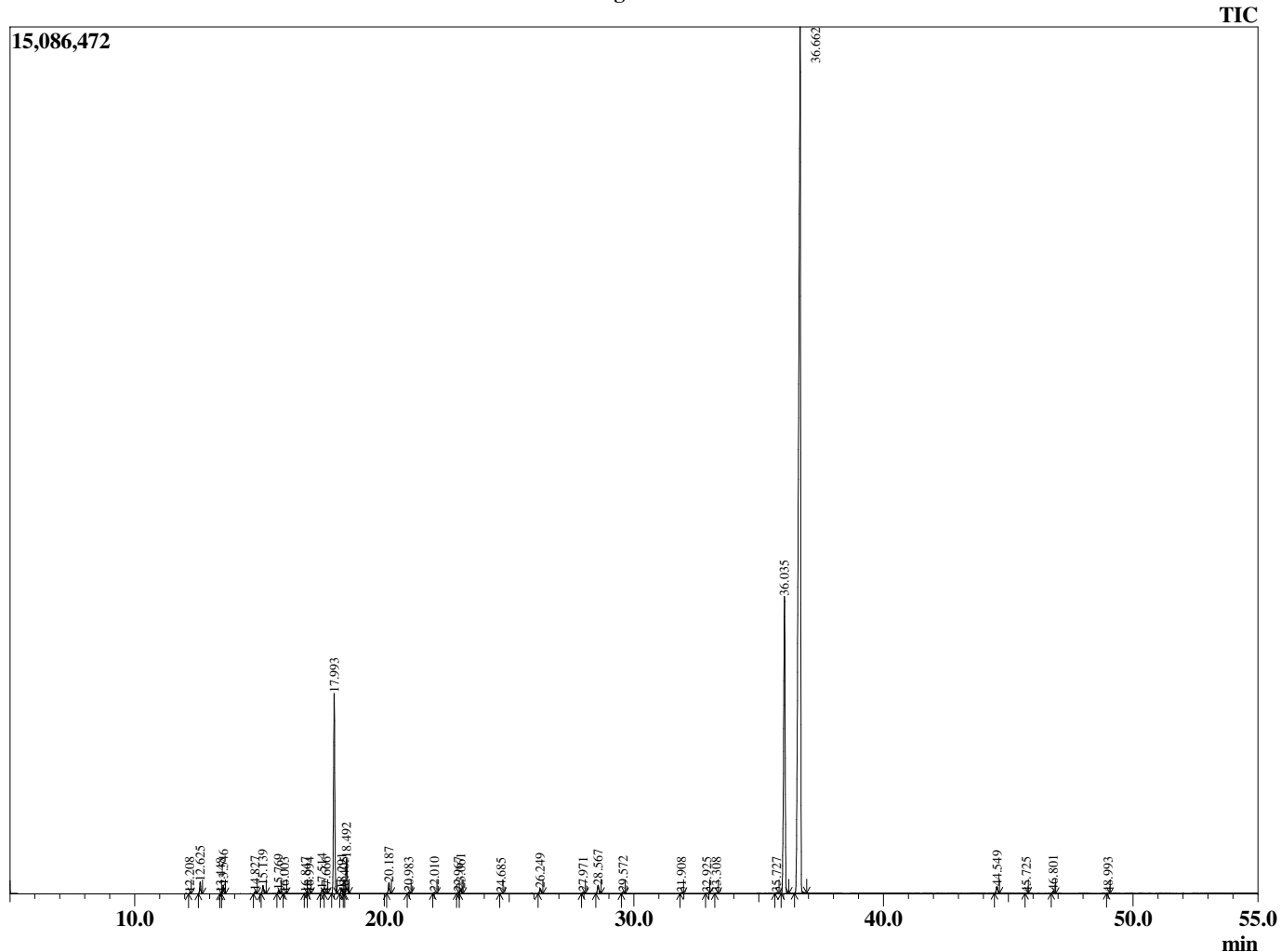
Sample Information

Analyzed by : T. Wortham
 Analyzed : 1/15/2018 5:28:53 PM
 Sample Type : Essential Oil
 Sample Name : OriVul1
 Injection Volume : 0.10
 Lot Number : B0111C
 Instrument ID : GC-3

Peak Report TIC

R.Time	Name	Area%
12.208	alpha-Thujene	0.03
12.625	alpha-Pinene	0.48
13.448	alpha-Fenchene	0.01
13.546	Camphene	0.36
14.827	Sabinene	0.09
15.139	beta-Pinene	0.39
15.769	Myrcene	0.14
16.003	cis-para-Menthane	0.04
16.847	alpha-Phellandrene	0.03
16.994	delta-3-Carene	0.03
17.514	alpha-Terpinene	0.20
17.666	ortho-Cymene	0.04
17.993	para-Cymene	9.19
18.291	Limonene	0.20
18.405	beta-Phellandrene	0.03
18.492	1,8-cineole	1.63
20.187	gamma-Terpinene	0.54
20.983	trans-Sabinene hydrate	0.07
22.010	Terpinolene	0.06
22.967	Linalool	0.07
23.061	cis-Sabinene hydrate	0.24
24.685	cis-para-Menth-2-en-1-ol	0.02
26.249	Camphor	0.27
27.971	Borneol	0.07
28.567	Terpinen-4-ol	0.48
29.572	alpha-Terpineol	0.10
31.908	Thymol methyl ether	0.05
32.925	Carvone	0.03
33.308	Linalyl acetate	0.04
35.727	Bornyl acetate	0.05
36.035	Thymol	16.97
36.662	Carvacrol	67.47
44.549	beta-Caryophyllene	0.40
45.725	beta-Copaene	0.03
46.801	alpha-Humulene	0.13
48.993	Viridiflorene (Ledene)	0.02
		100.00

Chromatogram OriVul1



© Copyright 2017 The Perfumery, All rights reserved.

This report is provided as a courtesy to our customers for their evaluation only. Any publishing, copying, use, dissemination, or distribution of this report, including online, without the express written permission of The Perfumery is strictly prohibited. To inquire about licensing analytical reporting services, please contact orders@theperfumery.com.