

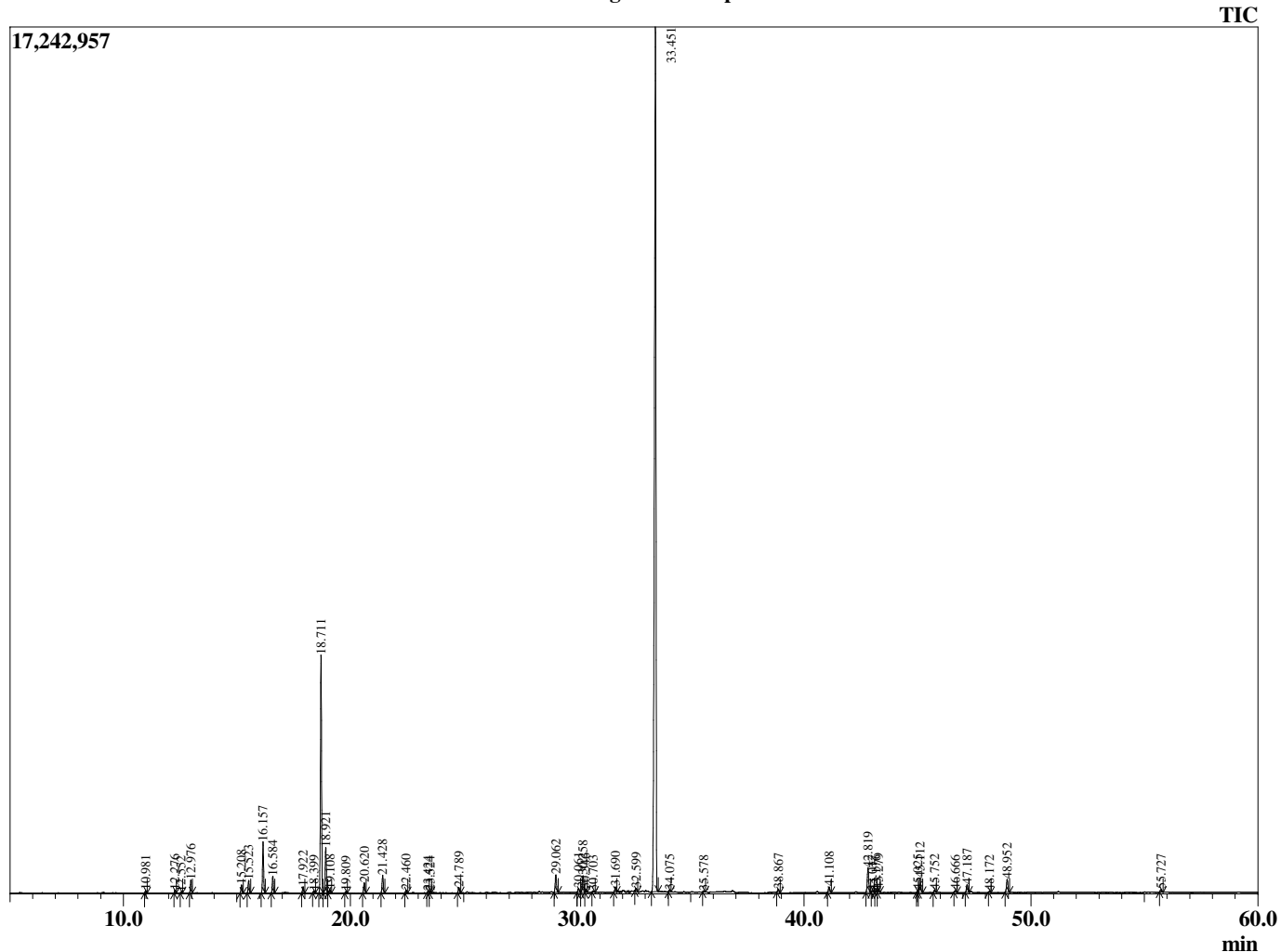
Sample Information

Analyzed by : T. Wortham
 Analyzed : 8/20/2019 6:51:02 PM
 Sample Type : Essential Oil
 Sample Name : MenSpi2
 Injection Volume : 0.10
 Lot Number : E0C0819W
 Instrument ID : GC-3

Peak Report TIC

R.Time	Name	Area%
4.212	Valeraldehyde	0.11
4.325	2-Methylbutanal	0.05
10.981	2,5-Diethyltetrahydrofuran	0.11
12.276	Hashishene	0.13
12.552	alpha-Thujene	0.05
12.976	alpha-Pinene	0.64
15.208	Sabinene	0.44
15.523	beta-Pinene	0.69
16.157	Myrcene	2.64
16.584	3-Octanol	0.89
17.922	alpha-Terpinene	0.35
18.399	para-Cymene	0.10
18.711	Limonene	13.15
18.921	1,8-cineole	2.63
19.108	cis-beta-Ocimene	0.18
19.809	trans-beta-Ocimene	0.07
20.620	gamma-Terpinene	0.60
21.428	trans-Sabinene hydrate	1.06
22.460	Terpinolene	0.14
23.424	Linalool	0.07
23.524	cis-Sabinene hydrate	0.07
24.789	3-Octyl acetate	0.31
29.062	Terpinen-4-ol	1.09
30.061	alpha-Terpineol	0.25
30.258	cis-Dihydrocarvone	1.22
30.346	Dihydrocarveol	0.15
30.703	trans-Dihydrocarvone	0.07
31.690	trans-Carveol	0.34
32.599	cis-Carveol	0.19
33.451	Carvone	66.21
34.075	Piperitone	0.11
35.578	Unidentified	0.07
38.867	trans-Dihydrocarvyl acetate	0.22
41.108	cis-Carveyl acetate	0.37
42.819	beta-Bourbonene	1.75
43.017	alpha-Bourbonene	0.10
43.176	beta-Elemene	0.08
43.279	cis-Jasmone	0.18
45.025	Unidentified	0.12
45.112	beta-Caryophyllene	1.06
45.752	beta-Copaene	0.14
46.666	Unidentified	0.12
47.187	trans-beta-Farnesene	0.53
48.172	Unidentified	0.06
48.952	Germacrene D	0.92
55.727	Viridiflorol	0.16
		100.00

Chromatogram MenSpi2



© Copyright 2019 The Perfumery, All rights reserved.

This report is provided as a courtesy to our customers for their evaluation only. Any publishing, copying, use, dissemination, or distribution of this report, including online, without the express written permission of The Perfumery is strictly prohibited. To inquire about licensing analytical reporting services, please contact orders@theperfumery.com.