

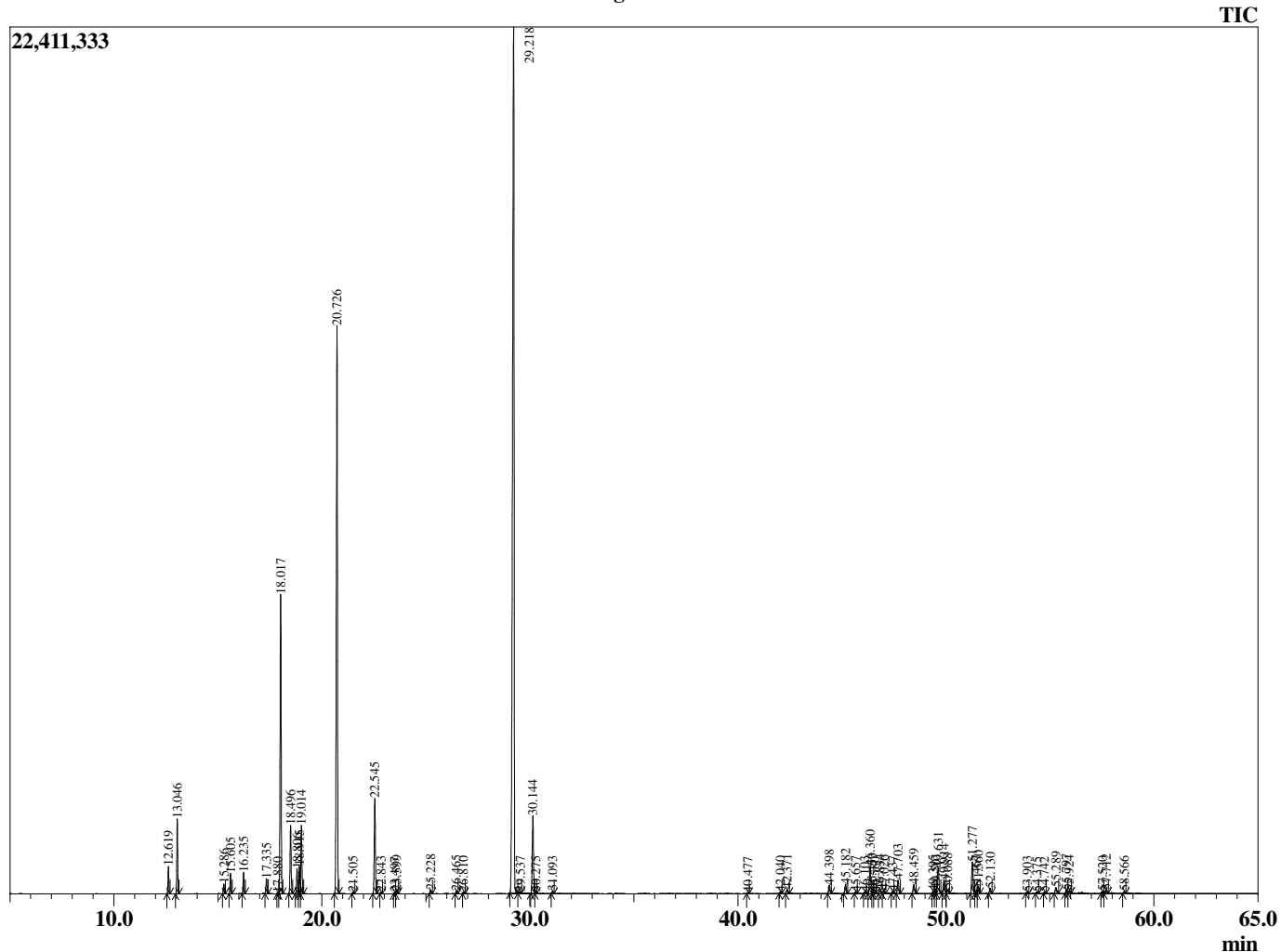
Sample Information

Analyzed by : T. Wortham
 Analyzed : 2/7/2020 9:13:13 PM
 Sample Type : Essential Oil
 Sample Name : MelAlt8
 Injection Volume : 0.10
 Lot Number : E1D0206D [1-4]
 Instrument ID : GC-3

Peak Report TIC

R.Time	Name	Area%
4.359	2-Methylbutanal	0.01
12.619	alpha-Thujene	0.74
13.046	alpha-Pinene	2.16
15.286	Sabinene	0.29
15.605	beta-Pinene	0.61
16.235	Myrcene	0.62
17.335	alpha-Phellandrene	0.48
17.880	1,4-Cineole	0.02
18.017	alpha-Terpinene	9.89
18.496	para-Cymene	2.27
18.806	Limonene	0.81
18.915	beta-Phellandrene	0.90
19.014	1,8-cineole	2.26
20.726	gamma-Terpinene	20.46
21.505	trans-Sabinene hydrate	0.07
22.545	Terpinolene	3.28
22.843	para-Cymenene	0.05
23.497	Linalool	0.03
23.599	cis-Sabinene hydrate	0.08
25.228	cis-para-Menth-2-en-1-ol	0.13
26.465	trans-para-Menth-2-en-1-ol	0.10
26.810	Camphor	0.06
29.218	Terpinen-4-ol	42.53
29.537	para-Cymen-8-ol	0.05
30.144	alpha-Terpineol	2.97
30.275	cis-Piperitol	0.04
31.093	trans-Piperitol	0.07
40.477	alpha-Cubebene	0.03
42.040	Isoledene	0.06
42.371	alpha-Copaene	0.17
44.398	alpha-Gurjunene	0.34
45.182	beta-Caryophyllene	0.39
45.657	Unidentified	0.06
46.103	Unidentified	0.06
46.360	Aromadendrene	1.21
46.453	Unidentified	0.12
46.580	Unidentified	0.05
46.834	alpha-Guaiene	0.16
47.026	trans-Murrola-3,5-diene	0.12
47.437	alpha-Humulene	0.07
47.703	Alloaromadendrene	0.56
48.459	10-beta-H-Cadina-1(6),4-diene	0.40
49.395	delta-Selinene	0.11
49.501	beta-Selinene	0.20
49.631	Viridiflorene (Ledene)	1.16
49.914	Bicylogermacrene	0.60
50.088	alpha-Muurolene	0.17
51.277	delta-Cadinene	1.36
51.467	trans-Calamenene	0.12
51.560	Zonarene	0.30
52.130	trans-Cadine-1,4-diene	0.22
53.903	Unidentified	0.07
54.375	Palustrol	0.05
54.742	Spathulenol	0.04
55.289	Viridiflorol	0.26
55.797	Unidentified	0.13
55.924	Guaiol	0.11
57.520	Unidentified	0.07
57.712	1-epi-Cubenol	0.14
58.566	Unidentified	0.07
		100.00

Chromatogram MelAlt8



© Copyright 2020 The Perfumery, All rights reserved.

This report is provided as a courtesy to our customers for their evaluation only. Any publishing, copying, use, dissemination, or distribution of this report, including online, without the express written permission of The Perfumery is strictly prohibited. To inquire about licensing analytical reporting services, please contact orders@theperfumery.com.