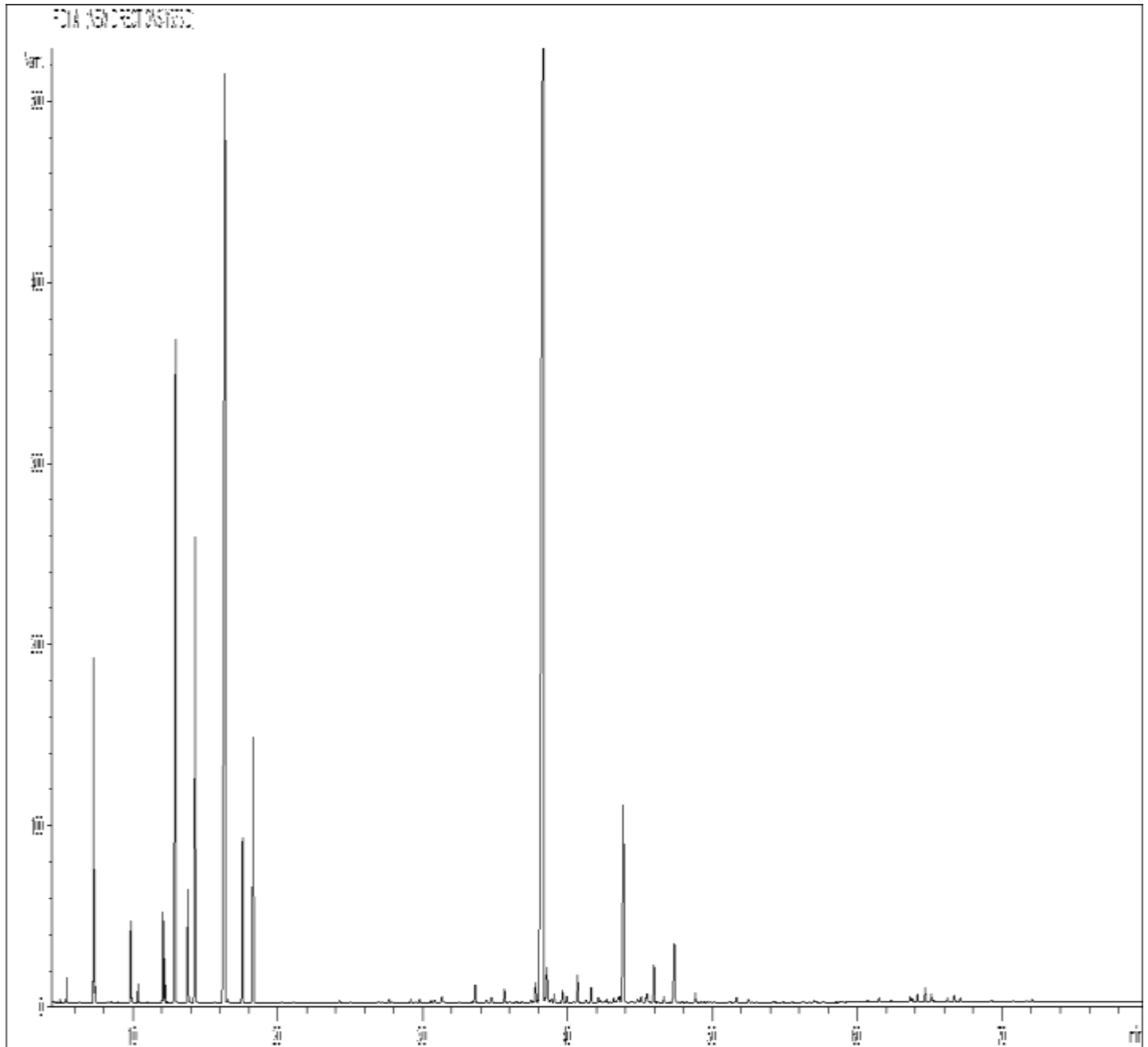


GCMS ANALYSIS

PRODUCT NAME: TEA TREE ESSENTIAL OIL-AAA (AUSTRALIA) Verified by ECOCERT

DATE: 31 Dec, 2020

Lot#: 11144B10919



*It is representative of the quality of this oil produced by the manufacturer of this product , Specific lots may vary slightly as is the case in natural products ,*

GCMS ANALYSIS (cont'd.)

PRODUCT NAME: TEA TREE ESSENTIAL OIL - AAA (AUSTRALIA) - Verified by ECOCERT

Peak	RT (min)	Compound name	%
1	4,41	ACETONE	0,04
2	4,96	ETHYL ACETATE	0,01
3	5,32	BUTANAL, 2-METHYL-	0,02
4	5,45	ETHANOL	0,14
5	7,29	<b>alpha-PINENE</b>	<b>2,50</b>
6	7,37	alpha-THUYENE	0,89
7	8,50	CAMPHENE	0,01
8	9,87	beta-PINENE	0,75
9	10,34	<b>SABINENE</b>	<b>0,17</b>
10	12,07	beta-MYRCENE	0,96
11	12,19	alpha-PHELLANDRENE	0,44
12	12,37	psi-LIMONENE	0,02
13	12,92	<b>alpha-TERPINENE</b>	<b>9,21</b>
14	13,79	<b>LIMONENE</b>	<b>1,27</b>
15	14,30	<b>1,8-CINEOLE</b>	<b>5,48</b>
16	14,40	beta-PHELLANDRENE	0,89
17	16,34	<b>gamma-TERPINENE</b>	<b>19,63</b>
18	16,55	Trans-beta-OCIMENE	0,03
19	17,56	<b>p-CYMENE</b>	<b>1,99</b>
20	18,31	<b>TERPINOLENE</b>	<b>3,53</b>
21	24,25	3-HEXEN-1-OL	0,03
22	26,94	MENTHATRIENE ISOMER	0,02
23	27,69	alpha-p-DIMETHYLSTYRENE	0,05
24	29,16	alpha-CUBEBENE	0,05
25	29,49	Trans-THUYANOL	0,01
26	29,78	SESQUITERPENE	0,05
27	30,56	BICYCLOLEMENE	0,03
28	30,81	SESQUITERPENE	0,05
29	31,32	alpha-COPAENE	0,09
30	31,44	SESQUITERPENE	0,02

Disclaimer & Caution

Please refer to all relevant technical information specific to the product, prior to use. The information contained in this document obtained from current and reliable sources. New Directions Aromatics Inc. provides the information contained representation as to its comprehensiveness or accuracy. Individuals receiving this information must exercise their independent judgment in determining its appropriateness for a particular use. The user of the product is solely responsible for compliance all laws and regulations applying to the use of the products, including intellectual property rights. As the ordinary or otherwise use(s) of this product is outside the control of New Directions Aromatics Inc., no representation or warranty, expressed implied, is made as to the effect(s) of such use(s), (including damage or injury), or the results. The liability of New Directions Aromatics Inc. is limited to the value of the goods and does not include any consequential damages. New Directions Aromatics Inc. shall not be liable for any errors or delays in the content, or for any actions taken in reliance on this information. New Directions Aromatics Inc. shall not be responsible for any damages resulting from use of or reliance upon this information. In the event of any dispute, the Customer hereby agrees that Jurisdiction is limited to the province of Ontario.

### GCMS ANALYSIS (cont'd)

PRODUCT NAME: TEA TREE ESSENTIAL OIL - AAA (AUSTRALIA) - Verified by ECOCERT

Peak	RT (min)	Compound name	%
31	33,42	SESQUITERPENE	0,02
32	33,62	alpha-GURJUNENE	0,29
33	34,39	Cis-THUYANOL + beta-MAALIENE	0,03
34	34,76	LINALOOL	0,08
35	35,64	Trans-p-MENTH-2-EN-1-OL	0,22
36	36,01	SESQUITERPENE	0,03
37	36,47	TERPINENE-1-OL	0,03
38	36,88	FENCHOL	0,01
39	37,49	CALARENE ISOMER + beta-ELEMENE	0,05
40	37,80	beta-CARYOPHYLLENE	0,36
41	38,32	<b>TERPINENE-4-OL</b>	<b>38,92</b>
42	38,58	<b>AROMADENDRENE</b>	<b>0,93</b>
43	38,87	SESQUITERPENE	0,05
44	39,08	SESQUITERPENE	0,12
45	39,65	Cis-p-MENTH-2-EN-1-OL	0,18
46	39,94	CADINA-3,5-DIENE + GURJUNENE ISOMER	0,09
47	40,45	SESQUITERPENE	0,01
48	40,70	ALLO-AROMADENDRENE	0,44
49	41,30	GURJUNENE ISOMER	0,04
50	41,63	ZONARENE	0,23
51	42,12	alpha-HUMULENE	0,09
52	42,30	delta-TERPINEOL	0,03
53	42,55	gamma-SELINENE	0,02
54	42,69	Cis-PIPERITOL	0,05
55	43,19	NERAL	0,07
56	43,33	SESQUITERPENE	0,03
57	43,49	gamma-MUUROLENE	0,08
58	43,59	CALARENE	0,10
59	43,80	<b>LEDENE</b>	<b>0,65</b>
60	43,87	<b>alpha-TERPINEOL</b>	<b>3,09</b>

#### Disclaimer & Caution

Please refer to all relevant technical information specific to the product, prior to use. The information contained in this document obtained from current and reliable sources. New Directions Aromatics Inc. provides the information contained representation as to its comprehensiveness or accuracy. Individuals receiving this information must exercise their independent judgment in determining its appropriateness for a particular use. The user of the product is solely responsible for compliance all laws and regulations applying to the use of the products, including intellectual property rights. As the ordinary or otherwise use(s) of this product is outside the control of New Directions Aromatics Inc., no representation or warranty, expressed implied, is made as to the effect(s) of such use(s), (including damage or injury), or the results. The liability of New Directions Aromatics Inc. is limited to the value of the goods and does not include any consequential damages. New Directions Aromatics Inc. shall not be liable for any errors or delays in the content, or for any actions taken in reliance on this information. New Directions Aromatics Inc. shall not be responsible for any damages resulting from use of or reliance upon this information. In the event of any dispute, the Customer hereby agrees that Jurisdiction is limited to the province of Ontario.

### GCMS ANALYSIS (cont'd)

**PRODUCT NAME: TEA TREE ESSENTIAL OIL - AAA (AUSTRALIA) - Verified by ECOCERT**

Peak	RT (min)	Compound name	%
61	44,36	GURJUNENE ISOMER	0,01
62	44,44	SESQUITERPENE	0,02
63	44,84	MUUROLADIENE ISOMER	0,07
64	45,08	beta-SELINENE	0,09
65	45,46	alpha-SELINENE + PIPERITONE	0,07
66	45,51	alpha-MUUROLENE	0,15
67	45,98	BICYCLOGERMACRENE	0,59
68	46,21	SESQUITERPENE	0,01
69	46,65	Trans-PIPERITOL	0,08
70	47,30	gamma-CADINENE	0,15
71	47,39	<b>delta-CADINENE</b>	<b>0,99</b>
72	47,90	SESQUITERPENE Mw=202	0,02
73	48,25	SESQUITERPENE Mw=203	0,01
74	48,83	CADINA-1,4-DIENE	0,16
75	49,60	SESQUITERPENE Mw=202	0,01
76	49,82	NEROL	0,02
77	50,12	AROMATIC COMPOUND	0,01
78	51,18	SESQUITERPENE	0,02
79	51,66	CALAMENENE	0,09
80	52,49	p-CYMENE-8-OL	0,05
81	56,22	alpha-CALACORENE	0,01
82	57,02	PALUSTROL	0,03
83	60,70	SESQUITERPENOL	0,03
84	61,09	SESQUITERPENOL	0,02
85	61,39	METHYLEUGENOL	0,02
86	61,51	Epi-GLOBULOL	0,06
87	62,33	LEDOL	0,03
88	62,64	GLEENOL	0,02
89	63,65	AROMATIC COMPOUND	0,09
90	63,80	Epi-CUBENOL	0,06

Disclaimer & Caution

Please refer to all relevant technical information specific to the product, prior to use. The information contained in this document obtained from current and reliable sources. New Directions Aromatics Inc. provides the information contained representation as to its comprehensiveness or accuracy. Individuals receiving this information must exercise their independent judgment in determining its appropriateness for a particular use. The user of the product is solely responsible for compliance all laws and regulations applying to the use of the products, including intellectual property rights. As the ordinary or otherwise use(s) of this product is outside the control of New Directions Aromatics Inc., no representation or warranty, expressed implied, is made as to the effect(s) of such use(s), (including damage or injury), or the results. The liability of New Directions Aromatics Inc. is limited to the value of the goods and does not include any consequential damages. New Directions Aromatics Inc. shall not be liable for any errors or delays in the content, or for any actions taken in reliance on this information. New Directions Aromatics Inc. shall not be responsible for any damages resulting from use of or reliance upon this information. In the event of any dispute, the Customer hereby agrees that Jurisdiction is limited to the province of Ontario.

GCMS ANALYSIS (cont'd,)

**PRODUCT NAME: TEA TREE ESSENTIAL OIL - AAA (AUSTRALIA) - Verified by ECOCERT**

Peak	RT (min)	Compound name	%
91	64,16	CUBENOL	0,12
92	64,69	<b>GLOBULOL</b>	<b>0,22</b>
93	65,11	<b>VIRIDIFLOROL</b>	<b>0,12</b>
94	65,29	Cis-1,4-DIHYDROXY-p-MENTH-2-ENE	0,03
95	66,23	10-Épi-gamma-EUDESMOL	0,05
96	66,71	ROSIFOLIOL	0,09
97	67,11	SPATHULENOL	0,06
98	68,41	Trans-1,4-DIHYDROXY-p-MENTH-2-ENE	0,01
99	69,27	alpha-MUUROLOL	0,03
100	70,78	delta-CADINOL	0,03
101	71,68	CARVACROL	0,02
102	72,07	beta-NOOTKATOL	0,04
103	80,72	GERANYLLINALOL ISOMER	0,80
104	80,80	GERANYLLINALOL	0,53
105	83,92	LAURIC ACID	0,04
106	89,63	GERANYLLINALOL ISOMER	0,09
		<b>TOTAL</b>	<b>100,00</b>

Disclaimer & Caution

Please refer to all relevant technical information specific to the product, prior to use. The information contained in this document obtained from current and reliable sources. New Directions Aromatics Inc. provides the information contained representation as to its comprehensiveness or accuracy. Individuals receiving this information must exercise their independent judgment in determining its appropriateness for a particular use. The user of the product is solely responsible for compliance all laws and regulations applying to the use of the products, including intellectual property rights. As the ordinary or otherwise use(s) of this product is outside the control of New Directions Aromatics Inc., no representation or warranty, expressed implied, is made as to the effect(s) of such use(s), (including damage or injury), or the results. The liability of New Directions Aromatics Inc. is limited to the value of the goods and does not include any consequential damages. New Directions Aromatics Inc. shall not be liable for any errors or delays in the content, or for any actions taken in reliance on this information. New Directions Aromatics Inc. shall not be responsible for any damages resulting from use of or reliance upon this information. In the event of any dispute, the Customer hereby agrees that Jurisdiction is limited to the province of Ontario.