



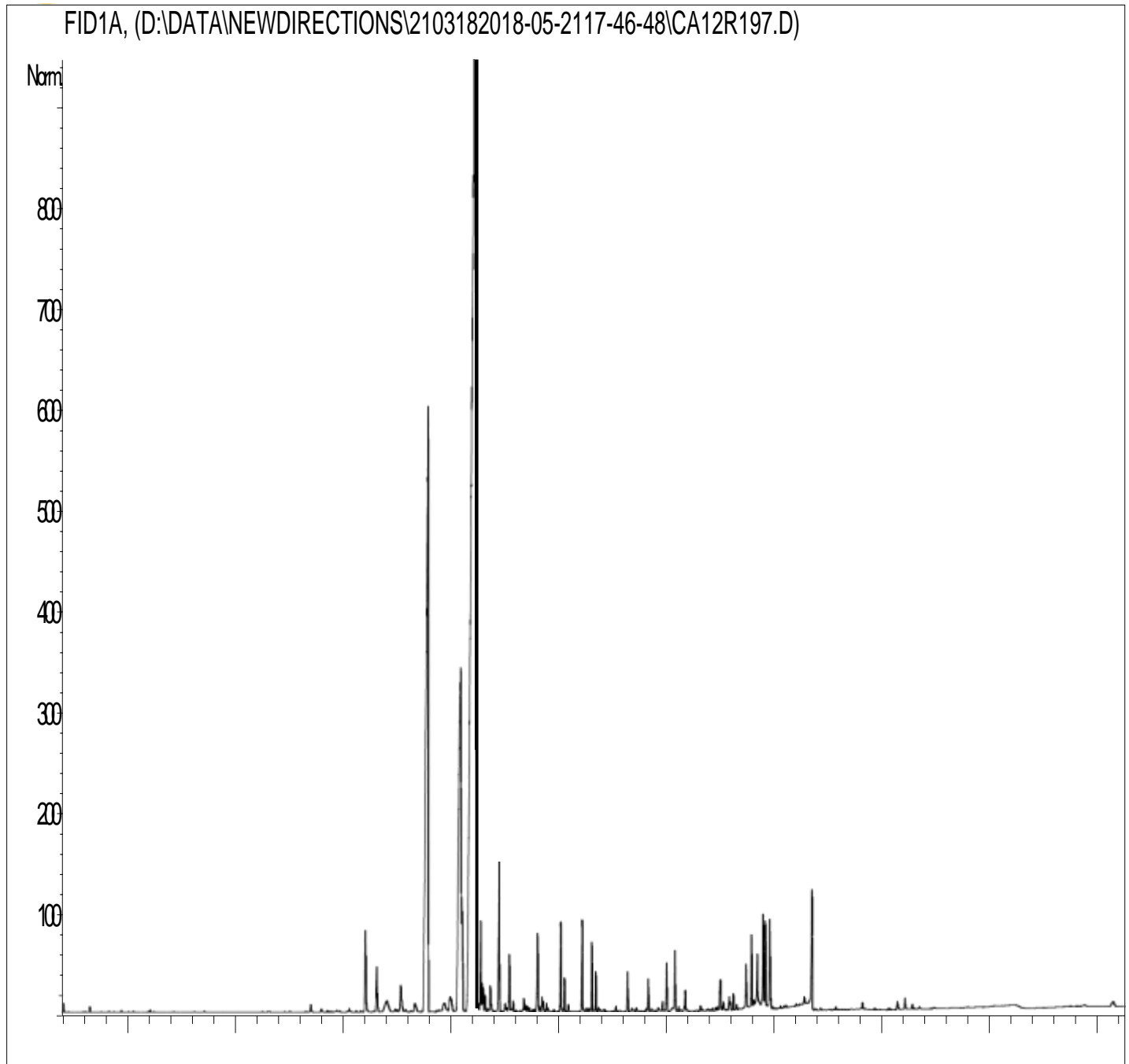
NEW DIRECTIONS
A R O M A T I C S

GCMS ANALYSIS

PRODUCT NAME: CEDARWOOD ATLAS ESSENTIAL OIL

DATE: 31 December,2020

Lot# : 11194B281



It is representative of the quality of this oil produced by the manufacturer of this product, Specific lots may vary slightly as is the case in natural products,



GCMS ANALYSIS (cont'd.)

PRODUCT NAME: CEDARWOOD ATLAS ESSENTIAL OIL

Peak	RT (min)	Compound	%
1	4,0	ACETONE	0,03
2	6,5	alpha-PINENE	0,02
3	8,2	UNDECANE	0,01
4	9,4	3-PENTEN-2-ONE, 4-METHYL-	0,01
5	10,5	beta-MYRCENE	0,01
6	12,0	DODECANE	0,01
7	12,1	LIMONENE	0,01
8	16,2	TERPINOLENE	0,01
9	17,1	TRIDECANE	0,01
10	23,0	TETRADECANE	0,01
11	25,0	alpha,p-DIMETHYLSTYRENE	0,01
12	26,9	alpha-LONGIPINENE	0,07
13	27,9	YLANGENE	0,03
14	28,5	alpha-COPAENE	0,02
15	28,8	SESQUITERPENE	0,01
16	29,4	SESQUITERPENE	0,02
17	29,7	CAMPHERE	0,01
18	30,3	SESQUITERPENE	0,01
19	30,5	SESQUITERPENE	0,03
20	31,2	COMPOUND Mw=160	0,01
21	31,6	SESQUITERPENE	0,01
22	32,0	1-METHYL-4-ACETYLCYCLOHEX-1-ENE	0,97
23	33,1	LONGIFOLENE	0,59
24	34,0	EUDESMATRIENE ISOMER Mw=202	0,50
25	34,8	CADINA-3,5-DIENE	0,04
26	35,0	SESQUITERPENE	0,03
27	35,3	alpha-CEDRENE	0,46
28	35,7	SESQUITERPENE	0,04
29	36,3	SESQUITERPENE	0,02
30	36,6	CEDRENE ISOMER	0,19

Disclaimer & Caution:

Please refer to all relevant technical information specific to the product, prior to use. The information contained in this document is obtained from current and reliable sources. New Directions Aromatics Inc. provides the information contained herein, but makes no representation as to its comprehensiveness or accuracy. Individuals receiving this information must exercise their independent judgment in determining its appropriateness for a particular purpose. The user of the product is solely responsible for compliance with all laws and regulations applying to the use of the products, including intellectual property rights of third parties. As the ordinary or otherwise use(s) of this product is outside the control of New Directions Aromatics Inc., no representation or warranty, expressed or implied, is made as to the effect(s) of such use(s), (including damage or injury), or the results obtained. The liability of New Directions Aromatics Inc. is limited to the value of the goods and does not include any consequential loss. New Directions Aromatics Inc. shall not be liable for any errors or delays in the content, or for any actions taken in reliance thereon. New Directions Aromatics Inc. shall not be responsible for any damages resulting from use of or reliance upon this information. In the event of any dispute, the Customer hereby agrees that Jurisdiction is limited to the province of Ontario.

GCMS ANALYSIS (cont'd.)

PRODUCT NAME: CEDARWOOD ATLAS ESSENTIAL OIL

Peak	RT (min)	Compound	%
31	37,8	alpha-HIMACHALENE	16,22
32	38,7	SESQUITERPENE Mw=202	0,02
33	38,9	HIMACHALENE ISOMER	0,04
34	39,3	E-beta-FARNESENE	0,30
35	39,9	HIMACHALENE ISOMER	0,42
36	40,8	gamma-HIMACHALENE	10,08
37	41,0	CURCUMENE ISOMER	1,31
38	42,2	beta-HIMACHALENE	46,24
39	42,4	EUDESMA-3,5,11-TRIENE	0,28
40	42,6	CURCUMENE ISOMER	0,06
41	42,8	THUYOPSENE	0,79
42	42,9	HIMACHALENE ISOMER	0,23
43	43,0	SESQUITERPENOL Mw=222	0,20
44	43,2	EUDESMATRIENE ISOMER Mw=202	0,14
45	43,4	SESQUITERPENE Mw=202	0,02
46	43,5	SESQUITERPENE Mw=202	0,02
47	43,6	SESQUITERPENE Mw=202	0,23
48	43,7	SESQUITERPENE Mw=202	0,05
49	44,5	delta-CADINENE	1,59
50	45,0	p-METHYLACETOPHENONE	0,08
51	45,2	alpha-CURCUMENE	0,04
52	45,4	alpha-BISABOLENE	0,54
53	45,6	SESQUITERPENE Mw=202	0,02
54	45,8	CADINA-1,4-DIENE	0,10
55	46,0	SESQUITERPENE Mw=202	0,01
56	46,5	SESQUITERPENE	0,01
57	46,7	SESQUITERPENE Mw=202	0,13
58	46,9	SESQUITERPENE	0,06
59	47,1	AROMATIC COMPOUND Mw=222	0,05
60	47,3	AROMATIC COMPOUND	0,03

Disclaimer & Caution:

Please refer to all relevant technical information specific to the product, prior to use. The information contained in this document is obtained from current and reliable sources. New Directions Aromatics Inc. provides the information contained herein, but makes no representation as to its comprehensiveness or accuracy. Individuals receiving this information must exercise their independent judgment in determining its appropriateness for a particular purpose. The user of the product is solely responsible for compliance with all laws and regulations applying to the use of the products, including intellectual property rights of third parties. As the ordinary or otherwise use(s) of this product is outside the control of New Directions Aromatics Inc., no representation or warranty, expressed or implied, is made as to the effect(s) of such use(s), (including damage or injury), or the results obtained. The liability of New Directions Aromatics Inc. is limited to the value of the goods and does not include any consequential loss. New Directions Aromatics Inc. shall not be liable for any errors or delays in the content, or for any actions taken in reliance thereon. New Directions Aromatics Inc. shall not be responsible for any damages resulting from use of or reliance upon this information. In the event of any dispute, the Customer hereby agrees that Jurisdiction is limited to the province of Ontario.

GCMS ANALYSIS (cont'd.)

PRODUCT NAME: CEDARWOOD ATLAS ESSENTIAL OIL

Peak	RT (min)	Compound	%
61	47,5	AROMATIC COMPOUND	0,01
62	47,7	AROMATIC COMPOUND	0,02
63	48,0	EUDESMA-2,4,11-TRIENE	0,86
64	48,3	CUPARENE	0,04
65	48,4	CALAMENENE	0,12
66	48,6	SESQUITERPENE Mw=202	0,09
67	48,8	SESQUITERPENE	0,07
68	49,0	EUDESMATRIENE ISOMER	0,03
69	49,5	SESQUITERPENE	0,01
70	50,2	OCTAHYDRO METHYLPHENANTHRENE Mw=200	0,83
71	50,5	OCTAHYDRO METHYLPHENANTHRENE Mw=200 ISO	0,29
72	50,9	SESQUITERPENE	0,05
73	52,2	OCTAHYDRO METHYLPHENANTHRENE Mw=200 ISO	0,85
74	52,3	COMPOUND Mw=218	0,02
75	52,6	COMPOUND Mw=218	0,03
76	52,8	SESQUITERPENIC EPOXIDE	0,03
77	53,0	alpha-CALACORENE	0,61
78	53,4	CYCLOTERPENIC ESTER	0,34
79	53,7	SESQUITERPENE	0,04
80	53,8	AROMATIC COMPOUND	0,02
81	54,2	AROMATIC COMPOUND	0,02
82	54,9	COMPOUND Mw=218	0,01
83	55,3	beta-CALACORENE	0,04
84	55,7	SESQUITERPENIC EPOXIDE	0,02
85	56,4	COMPOUND Mw=218	0,36
86	56,8	SESQUITERPENIC EPOXIDE	0,03
87	57,2	SESQUITERPENIC EPOXIDE	0,03
88	58,1	SESQUITERPENIC EPOXIDE	0,02
89	58,3	SESQUITERPENIC COMPOUND	0,30
90	58,6	beta-HIMACHALENOXIDE	0,03

Disclaimer & Caution:

Please refer to all relevant technical information specific to the product, prior to use. The information contained in this document is obtained from current and reliable sources. New Directions Aromatics Inc. provides the information contained herein, but makes no representation as to its comprehensiveness or accuracy. Individuals receiving this information must exercise their independent judgment in determining its appropriateness for a particular purpose. The user of the product is solely responsible for compliance with all laws and regulations applying to the use of the products, including intellectual property rights of third parties. As the ordinary or otherwise use(s) of this product is outside the control of New Directions Aromatics Inc., no representation or warranty, expressed or implied, is made as to the effect(s) of such use(s), (including damage or injury), or the results obtained. The liability of New Directions Aromatics Inc. is limited to the value of the goods and does not include any consequential loss. New Directions Aromatics Inc. shall not be liable for any errors or delays in the content, or for any actions taken in reliance thereon. New Directions Aromatics Inc. shall not be responsible for any damages resulting from use of or reliance upon this information. In the event of any dispute, the Customer hereby agrees that Jurisdiction is limited to the province of Ontario.

GCMS ANALYSIS (cont'd.)

PRODUCT NAME: CEDARWOOD ATLAS ESSENTIAL OIL

Peak	RT (min)	Compound	%
91	58,9	SESQUITERPENIC EPOXIDE	0,01
92	59,2	SESQUITERPENIC EPOXIDE	0,05
93	59,6	SESQUITERPENIC EPOXIDE	0,08
94	59,8	SESQUITERPENIC EPOXIDE	0,01
95	60,0	SESQUITERPENIC EPOXIDE	0,46
96	60,5	SESQUITERPENIC COMPOUND Mw=218	0,07
97	60,7	CUBENOL	0,57
98	61,1	SESQUITERPENIC EPOXIDE	0,04
99	61,6	SESQUITERPENOL	0,03
100	61,7	SESQUITERPENOL	0,19
101	63,1	SESQUITERPENIC EPOXIDE	0,05
102	63,3	SESQUITERPENOL	0,02
103	63,7	SESQUITERPENOL	0,01
104	63,8	SESQUITERPENIC EPOXIDE	0,03
105	64,1	SESQUITERPENOL	0,01
106	64,3	SESQUITERPENIC EPOXIDE	0,02
107	64,6	SESQUITERPENOL	0,03
108	64,7	SESQUITERPENOL	0,03
109	65,0	OXYGENED COMPOUND Mw=220	0,44
110	65,3	SESQUITERPENOL	0,12
111	65,5	SESQUITERPENIC EPOXIDE	0,01
112	65,8	SESQUITERPENIC EPOXIDE	0,13
113	65,9	SESQUITERPENOL	0,07
114	66,2	SESQUITERPENOL	0,14
115	66,5	SESQUITERPENOL Mw=220	0,07
116	66,7	SESQUITERPENIC EPOXIDE	0,02
117	67,4	alpha-TUMERONE Mw=218	0,41
118	67,9	HIMACHALOL	0,69
119	68,1	SESQUITERPENONE Mw=218	0,06
120	68,3	beta-TUMERONE	1,68

Disclaimer & Caution:

Please refer to all relevant technical information specific to the product, prior to use. The information contained in this document is obtained from current and reliable sources. New Directions Aromatics Inc. provides the information contained herein, but makes no representation as to its comprehensiveness or accuracy. Individuals receiving this information must exercise their independent judgment in determining its appropriateness for a particular purpose. The user of the product is solely responsible for compliance with all laws and regulations applying to the use of the products, including intellectual property rights of third parties. As the ordinary or otherwise use(s) of this product is outside the control of New Directions Aromatics Inc., no representation or warranty, expressed or implied, is made as to the effect(s) of such use(s), (including damage or injury), or the results obtained. The liability of New Directions Aromatics Inc. is limited to the value of the goods and does not include any consequential loss. New Directions Aromatics Inc. shall not be liable for any errors or delays in the content, or for any actions taken in reliance thereon. New Directions Aromatics Inc. shall not be responsible for any damages resulting from use of or reliance upon this information. In the event of any dispute, the Customer hereby agrees that Jurisdiction is limited to the province of Ontario.

GCMS ANALYSIS (cont'd.)

PRODUCT NAME: CEDARWOOD ATLAS ESSENTIAL OIL

Peak	RT (min)	Compound	%
121	68,5	CADALENE	0,09
122	68,9	alpha-ATLANTONE	0,89
123	69,1	beta-ATLANTONE	0,82
124	69,5	ALLO-HIMACHALOL	0,91
125	69,6	AROMATIC COMPOUND	0,11
126	69,8	SESQUITERPENOL Mw=220	0,02
127	70,5	AROMATIC COMPOUND	0,02
128	70,9	AROMATIC COMPOUND	0,03
129	71,0	SESQUITERPENIC EPOXIDE	0,03
130	72,0	AROMATIC COMPOUND	0,03
131	72,7	SESQUITERPENOL Mw=220	0,09
132	73,5	gamma-ATLANTONE	3,03
133	73,8	SESQUITERPENOL	0,02
134	74,3	SESQUITERPENOL	0,02
135	75,7	SESQUITERPENOL	0,03
136	78,0	AROMATIC COMPOUND	0,01
137	78,1	SESQUITERPENONE Mw=218	0,06
138	79,3	DITERPENE Mw=272	0,01
139	80,5	AROMATIC COMPOUND	0,01
140	80,7	AROMATIC COMPOUND	0,01
141	81,4	SESQUITERPENOL	0,10
142	82,1	OXYGENED COMPOUND Mw=220	0,11
143	82,8	OXYGENED COMPOUND Mw=220	0,04
144	83,4	OXYGENED COMPOUND Mw=220	0,02
		TOTAL	99,79

Disclaimer & Caution:

Please refer to all relevant technical information specific to the product, prior to use. The information contained in this document is obtained from current and reliable sources. New Directions Aromatics Inc. provides the information contained herein, but makes no representation as to its comprehensiveness or accuracy. Individuals receiving this information must exercise their independent judgment in determining its appropriateness for a particular purpose. The user of the product is solely responsible for compliance with all laws and regulations applying to the use of the products, including intellectual property rights of third parties. As the ordinary or otherwise use(s) of this product is outside the control of New Directions Aromatics Inc., no representation or warranty, expressed or implied, is made as to the effect(s) of such use(s), (including damage or injury), or the results obtained. The liability of New Directions Aromatics Inc. is limited to the value of the goods and does not include any consequential loss. New Directions Aromatics Inc. shall not be liable for any errors or delays in the content, or for any actions taken in reliance thereon. New Directions Aromatics Inc. shall not be responsible for any damages resulting from use of or reliance upon this information. In the event of any dispute, the Customer hereby agrees that Jurisdiction is limited to the province of Ontario.