



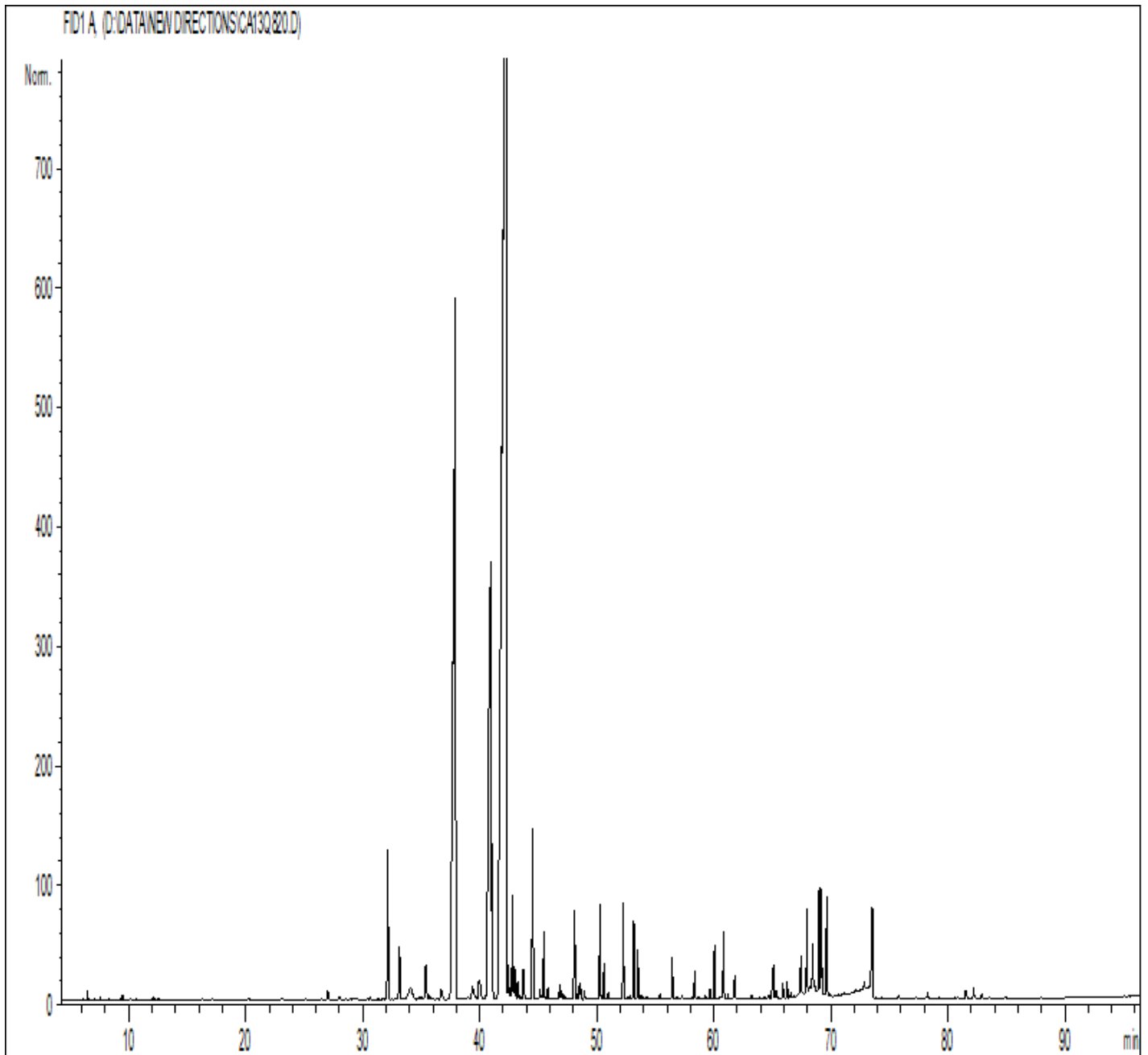
NEW DIRECTIONS
A R O M A T I C S

GCMS ANALYSIS

PRODUCT NAME: CEDARWOOD ATLAS ESSENTIAL OIL

DATE: May 28, 2018

Lot# : 11194B27



*It is representative of the quality of this oil produced by the manufacturer of this product,
Specific lots may vary slightly as is the case in natural products,*



GCMS ANALYSIS (cont'd.)

PRODUCT NAME: CEDARWOOD ATLAS ESSENTIAL OIL

Peak	RT (min)	Compound	%
1	4,0	ACETONE	0,02
2	6,5	alpha-PINENE	0,03
3	7,5	UNDECANE	0,01
4	8,2	beta-PINENE	0,01
5	9,5	3-PENTEN-2-ONE, 4-METHYL-	0,02
6	10,1	beta-MYRCENE	0,01
7	12,0	DODECANE	0,01
8	12,1	LIMONENE	0,01
9	16,2	TERPINOLENE	0,01
10	17,1	TRIDECANE	0,01
11	23,0	TETRADECANE	0,01
12	25,1	alpha,p-DIMETHYLSTYRENE	0,01
13	27,0	alpha-LONGIPINENE	0,07
14	28,0	YLANGENE	0,03
15	28,5	alpha-COPAENE	0,02
16	28,9	SESQUITERPENE	0,01
17	29,4	SESQUITERPENE	0,01
18	29,5	PENTADECANE	0,01
19	30,6	COPACAMPHENE	0,03
20	31,3	SESQUITERPENE	0,01
21	31,6	SESQUITERPENE	0,01
22	32,0	CADINA-3,5-DIENE	0,55
23	32,1	1-METHYL-4-ACETYLCYCLOHEX-1-ENE	0,71
24	32,8	SESQUITERPENE	0,02
25	33,1	LONGIFOLENE	0,54
26	34,1	EUDESMATRIENE ISOMER Mw=202	0,47
27	34,8	SESQUITERPENE	0,04
28	35,0	MAALIENE ISOMER	0,02
29	35,4	alpha-CEDRENE	0,46
30	35,7	SESQUITERPENE	0,05

Disclaimer & Caution:

Please refer to all relevant technical information specific to the product, prior to use. The information contained in this document is obtained from current and reliable sources. New Directions Aromatics Inc. provides the information contained herein, but makes no representation as to its comprehensiveness or accuracy. Individuals receiving this information must exercise their independent judgment in determining its appropriateness for a particular purpose. The user of the product is solely responsible for compliance with all laws and regulations applying to the use of the products, including intellectual property rights of third parties. As the ordinary or otherwise use(s) of this product is outside the control of New Directions Aromatics Inc., no representation or warranty, expressed or implied, is made as to the effect(s) of such use(s), (including damage or injury), or the results obtained. The liability of New Directions Aromatics Inc. is limited to the value of the goods and does not include any consequential loss. New Directions Aromatics Inc. shall not be liable for any errors or delays in the content, or for any actions taken in reliance thereon. New Directions Aromatics Inc. shall not be responsible for any damages resulting from use of or reliance upon this information. In the event of any dispute, the Customer hereby agrees that Jurisdiction is limited to the province of Ontario.

GCMS ANALYSIS (cont'd.)

PRODUCT NAME: CEDARWOOD ATLAS ESSENTIAL OIL

Peak	RT (min)	Compound	%
31	36,7	CEDRENE ISOMER	0,21
32	37,9	alpha-HIMACHALENE	16,21
33	38,7	SESQUITERPENE	0,02
34	38,9	HIMACHALENE ISOMER	0,04
35	39,4	E-beta-FARNESENE	0,29
36	39,9	HIMACHALENE ISOMER	0,39
37	40,9	gamma-HIMACHALENE	9,90
38	41,0	CURCUMENE ISOMER	1,49
39	42,3	beta-HIMACHALENE	46,42
40	42,4	EUDESMA-3,5,11-TRIENE	0,28
41	42,6	CURCUMENE ISOMER	0,06
42	42,8	THUYOPSENE	0,79
43	42,9	HIMACHALENE ISOMER	0,23
44	43,0	SESQUITERPENE Mw=222	0,20
45	43,2	EUDESMATRIENE ISOMER Mw=202	0,14
46	43,4	SESQUITERPENE Mw=220	0,02
47	43,5	SESQUITERPENE Mw=220	0,02
48	43,7	SESQUITERPENE Mw=202	0,22
49	43,8	SESQUITERPENE Mw=202	0,05
50	44,5	delta-CADINENE	1,62
51	45,1	p-METHYLACETOPHENONE	0,09
52	45,2	alpha-CURCUMENE	0,03
53	45,5	alpha-BISABOLENE	0,55
54	45,7	SESQUITERPENE Mw=202	0,02
55	45,8	CADINA-1,4-DIENE	0,09
56	46,0	SESQUITERPENE Mw=202	0,01
57	46,6	SESQUITERPENE	0,01
58	46,8	SESQUITERPENE Mw=202	0,12
59	46,9	SESQUITERPENE	0,06
60	47,1	AROMATIC COMPOUND Mw=222	0,05

Disclaimer & Caution:

Please refer to all relevant technical information specific to the product, prior to use. The information contained in this document is obtained from current and reliable sources. New Directions Aromatics Inc. provides the information contained herein, but makes no representation as to its comprehensiveness or accuracy. Individuals receiving this information must exercise their independent judgment in determining its appropriateness for a particular purpose. The user of the product is solely responsible for compliance with all laws and regulations applying to the use of the products, including intellectual property rights of third parties. As the ordinary or otherwise use(s) of this product is outside the control of New Directions Aromatics Inc., no representation or warranty, expressed or implied, is made as to the effect(s) of such use(s), (including damage or injury), or the results obtained. The liability of New Directions Aromatics Inc. is limited to the value of the goods and does not include any consequential loss. New Directions Aromatics Inc. shall not be liable for any errors or delays in the content, or for any actions taken in reliance thereon. New Directions Aromatics Inc. shall not be responsible for any damages resulting from use of or reliance upon this information. In the event of any dispute, the Customer hereby agrees that Jurisdiction is limited to the province of Ontario.

GCMS ANALYSIS (cont'd.)

PRODUCT NAME: CEDARWOOD ATLAS ESSENTIAL OIL

Peak	RT (min)	Compound	%
61	47,3	AROMATIC COMPOUND	0,02
62	47,6	AROMATIC COMPOUND	0,01
63	47,7	AROMATIC COMPOUND	0,02
64	48,1	EUDESMA-2,4,11-TRIENE	0,79
65	48,2	SESQUITERPENE Mw=202	0,05
66	48,3	CUPARENE	0,04
67	48,5	CALAMENENE	0,12
68	48,6	SESQUITERPENE Mw=202	0,09
69	48,9	SESQUITERPENE	0,06
70	49,0	EUDESMATRIENE ISOMER	0,03
71	49,6	SESQUITERPENE	0,01
72	50,3	OCTAHYDRO METHYLPHENANTHRENE Mw=200	0,77
73	50,6	OCTAHYDRO METHYLPHENANTHRENE Mw=200 ISO	0,27
74	50,9	SESQUITERPENE	0,05
75	52,3	OCTAHYDRO METHYLPHENANTHRENE Mw=200 ISO	0,77
76	52,6	COMPOUND Mw=218	0,03
77	52,8	COMPOUND Mw=218	0,03
78	53,1	alpha-CALACORENE	0,62
79	53,5	CYCLOTERPENIC ESTER	0,38
80	53,7	SESQUITERPENE	0,03
81	53,9	AROMATIC COMPOUND	0,01
82	54,3	AROMATIC COMPOUND	0,03
83	55,4	beta-CALACORENE	0,05
84	56,4	COMPOUND Mw=218	0,34
85	56,8	SESQUITERPENIC EPOXIDE	0,03
86	57,3	SESQUITERPENIC EPOXIDE	0,03
87	58,2	SESQUITERPENIC EPOXIDE	0,02
88	58,3	SESQUITERPENIC COMPOUND	0,23
89	58,6	beta-HIMACHALENOXIDE	0,04
90	59,3	SESQUITERPENIC EPOXIDE	0,05

Disclaimer & Caution:

Please refer to all relevant technical information specific to the product, prior to use. The information contained in this document is obtained from current and reliable sources. New Directions Aromatics Inc. provides the information contained herein, but makes no representation as to its comprehensiveness or accuracy. Individuals receiving this information must exercise their independent judgment in determining its appropriateness for a particular purpose. The user of the product is solely responsible for compliance with all laws and regulations applying to the use of the products, including intellectual property rights of third parties. As the ordinary or otherwise use(s) of this product is outside the control of New Directions Aromatics Inc., no representation or warranty, expressed or implied, is made as to the effect(s) of such use(s), (including damage or injury), or the results obtained. The liability of New Directions Aromatics Inc. is limited to the value of the goods and does not include any consequential loss. New Directions Aromatics Inc. shall not be liable for any errors or delays in the content, or for any actions taken in reliance thereon. New Directions Aromatics Inc. shall not be responsible for any damages resulting from use of or reliance upon this information. In the event of any dispute, the Customer hereby agrees that Jurisdiction is limited to the province of Ontario.

GCMS ANALYSIS (cont'd.)

PRODUCT NAME: CEDARWOOD ATLAS ESSENTIAL OIL

Peak	RT (min)	Compound	%
91	59,7	SESQUITERPENIC EPOXIDE	0,08
92	60,0	SESQUITERPENIC EPOXIDE	0,44
93	60,5	SESQUITERPENIC EPOXIDE Mw=218	0,04
94	60,8	CUBENOL	0,58
95	61,2	SESQUITERPENIC EPOXIDE	0,03
96	61,8	SESQUITERPENOL	0,22
97	63,2	SESQUITERPENIC EPOXIDE	0,04
98	63,9	SESQUITERPENIC EPOXIDE	0,03
99	64,3	SESQUITERPENIC EPOXIDE	0,04
100	64,6	SESQUITERPENOL	0,03
101	64,8	SESQUITERPENOL	0,04
102	65,0	OXYGENED COMPOUND Mw=220	0,22
103	65,1	OXYGENED COMPOUND Mw=220	0,20
104	65,3	SESQUITERPENOL	0,11
105	65,9	SESQUITERPENIC EPOXIDE	0,14
106	66,0	SESQUITERPENOL	0,05
107	66,3	SESQUITERPENOL Mw=220	0,14
108	66,6	SESQUITERPENIC EPOXIDE	0,07
109	67,4	Alpha-TUMERONE Mw=218	0,30
110	67,9	HIMACHALOL	0,66
111	68,1	SESQUITERPENONE Mw=218	0,05
112	68,4	Beta-TUMERONE	1,66
113	68,6	CADALENE	0,06
114	69,0	alpha-ATLANTONE	1,05
115	69,2	beta-ATLANTONE	0,99
116	69,6	ALLO-HIMACHALOL	0,96
117	70,6	AROMATIC COMPOUND	0,03
118	72,1	AROMATIC COMPOUND	0,04
119	72,8	SESQUITERPENOL Mw=220	0,07
120	73,5	gamma-ATLANTONE	3,25

Disclaimer & Caution:

Please refer to all relevant technical information specific to the product, prior to use. The information contained in this document is obtained from current and reliable sources. New Directions Aromatics Inc. provides the information contained herein, but makes no representation as to its comprehensiveness or accuracy. Individuals receiving this information must exercise their independent judgment in determining its appropriateness for a particular purpose. The user of the product is solely responsible for compliance with all laws and regulations applying to the use of the products, including intellectual property rights of third parties. As the ordinary or otherwise use(s) of this product is outside the control of New Directions Aromatics Inc., no representation or warranty, expressed or implied, is made as to the effect(s) of such use(s), (including damage or injury), or the results obtained. The liability of New Directions Aromatics Inc. is limited to the value of the goods and does not include any consequential loss. New Directions Aromatics Inc. shall not be liable for any errors or delays in the content, or for any actions taken in reliance thereon. New Directions Aromatics Inc. shall not be responsible for any damages resulting from use of or reliance upon this information. In the event of any dispute, the Customer hereby agrees that Jurisdiction is limited to the province of Ontario.

GCMS ANALYSIS (cont'd.)

PRODUCT NAME: CEDARWOOD ATLAS ESSENTIAL OIL

Peak	RT (min)	Compound	%
121	75,7	SESQUITERPENOL	0,03
122	78,3	SESQUITERPENONE Mw=218	0,05
123	79,3	SESQUITERPENOL	0,01
124	80,6	DITERPENE Mw=272	0,01
125	80,8	OXYGENED COMPOUND Mw=220	0,01
126	81,5	OXYGENED COMPOUND Mw=220	0,10
127	82,2	OXYGENED COMPOUND Mw=220	0,10
128	82,8	OXYGENED COMPOUND Mw=220	0,04
129	83,5	AROMATIC COMPOUND	0,02
		TOTAL	99,86

Disclaimer & Caution:

Please refer to all relevant technical information specific to the product, prior to use, The information contained in this document is obtained from current and reliable sources, New Directions Aromatics Inc, provides the information contained herein, but makes no representation as to its comprehensiveness or accuracy, Individuals receiving this information must exercise their independent judgment in determining its appropriateness for a particular purpose, The user of the product is solely responsible for compliance with all laws and regulations applying to the use of the products, including intellectual property rights of third parties, As the ordinary or otherwise use(s) of this product is outside the control of New Directions Aromatics Inc., no representation or warranty, expressed or implied, is made as to the effect(s) of such use(s), (including damage or injury), or the results obtained, The liability of New Directions Aromatics Inc, is limited to the value of the goods and does not include any consequential loss, New Directions Aromatics Inc, shall not be liable for any errors or delays in the content, or for any actions taken in reliance thereon, New Directions Aromatics Inc, shall not be responsible for any damages resulting from use of or reliance upon this information, In the event of any dispute, the Customer hereby agrees that Jurisdiction is limited to the province of Ontario,