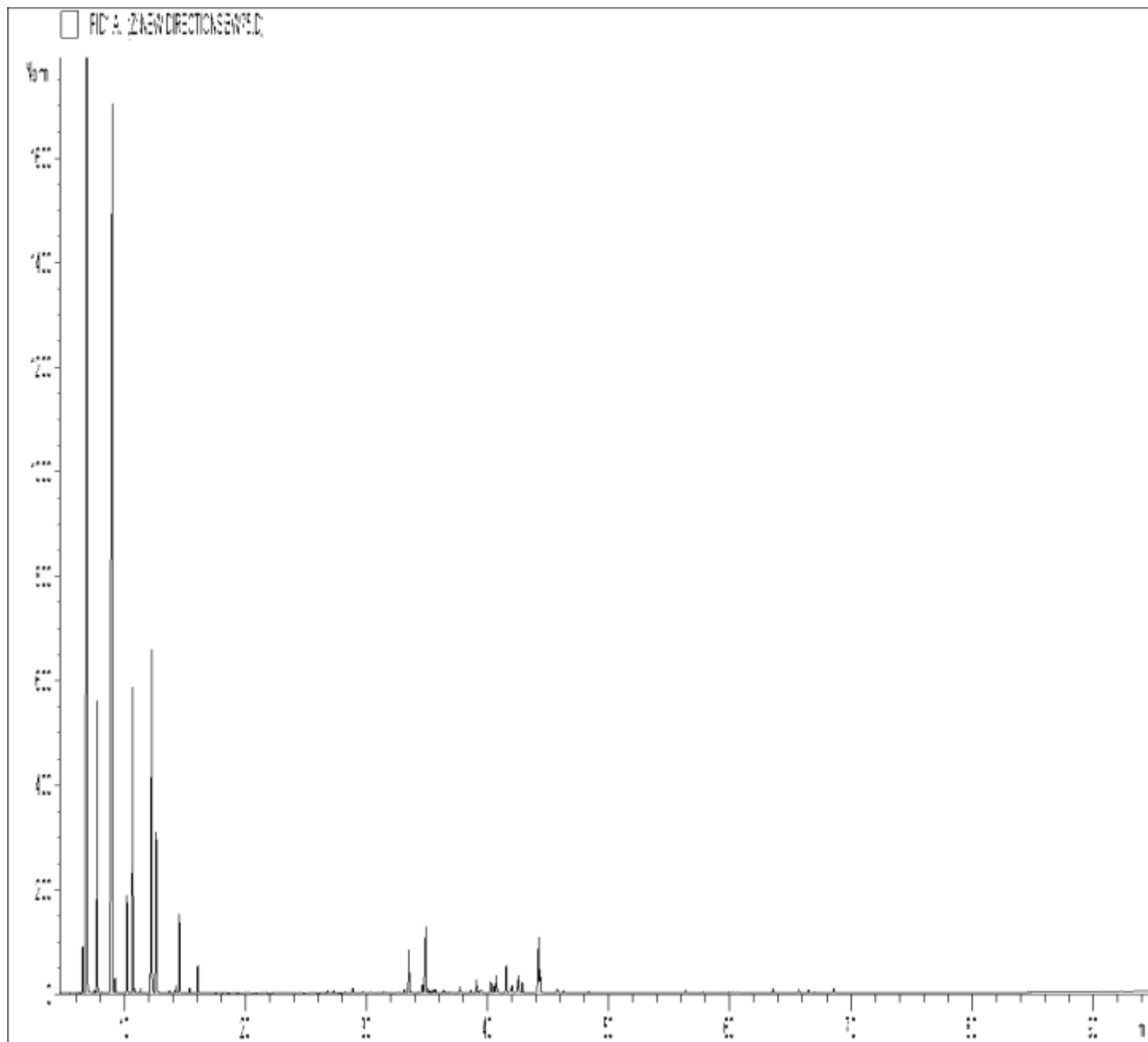


GCMS ANALYSIS

PRODUCT NAME: PINE ORGANIC ESSENTIAL OIL

DATE: September 8, 2020

Lot#: 500300A10620



*It is representative of the quality of this oil produced by the manufacturer of this product,  
Specific lots may vary slightly as is the case in natural products,*

GCMS ANALYSIS (cont'd.)

PRODUCT NAME: PINE ORGANIC ESSENTIAL OIL

Peak	RT (min)	Compound name	%
1	6,09	SANTENE	0,02
2	6,54	TRICYCLENE	0,75
3	6,92	<b>alpha-PINENE</b>	<b>41,58</b>
4	7,52	alpha-FENCHENE	0,04
5	7,74	<b>CAMPHENE</b>	<b>3,43</b>
6	8,07	HEXANAL	0,02
7	8,96	<b>beta-PINENE</b>	<b>25,51</b>
8	9,21	SABINENE	0,16
9	9,28	PINADIENE	0,06
10	10,21	delta3-CARENE	1,29
11	10,69	<b>beta-MYRCENE</b>	<b>5,22</b>
12	10,78	alpha-PHELLANDRENE	0,08
13	10,88	psi-LIMONENE	0,02
14	11,16	o-CYMENE	0,01
15	11,32	alpha-TERPINENE	0,07
16	11,87	MENTHATRIENE ISOMER	0,01
17	12,27	<b>LIMONENE</b>	<b>7,85</b>
18	12,61	beta-PHELLANDRENE + 1,8-CINEOLE	2,41
19	12,77	1,3,8-p-MENTHATRIENE	0,03
20	13,38	FURAN, 2-PENTYL-	0,01
21	13,70	Cis-beta-OCIMENE	0,03
22	14,23	gamma-TERPINENE	0,12
23	14,53	Trans-beta-OCIMENE	1,07
24	15,36	p-CYMENE	0,08
25	15,75	ISOTERPINOLENE	0,01
26	16,05	TERPINOLENE	0,43
27	18,22	PINOL	0,01
28	21,12	alpha-PINENE EPOXIDE	0,01
29	21,52	3-HEXEN-1-OL	0,01
30	22,37	FENCHONE	0,01

Disclaimer & Caution

Please refer to all relevant technical information specific to the product, prior to use. The information contained in this document is obtained from current and reliable sources. New Directions Aromatics Inc. provides the information contained herein, but makes no representation as to its comprehensiveness or accuracy. Individuals receiving this information must exercise their independent judgment in determining its appropriateness for a particular purpose. The user of the product is solely responsible for compliance with all laws and regulations applying to the use of the products, including intellectual property rights of third parties. As the ordinary or otherwise use(s) of this product is outside the control of New Directions Aromatics Inc., no representation or warranty, expressed or implied, is made as to the effect(s) of such use(s), (including damage or injury), or the results obtained. The liability of New Directions Aromatics Inc. is limited to the value of the goods and does not include any consequential loss. New Directions Aromatics Inc. shall not be liable for any errors or delays in the content, or for any actions taken in reliance thereon. New Directions Aromatics Inc. shall not be responsible for any damages resulting from use of or reliance upon this information. In the event of any dispute, the Customer hereby agrees that jurisdiction is limited to the province of Ontario.

GCMS ANALYSIS (cont'd.)

PRODUCT NAME: PINE ORGANIC ESSENTIAL OIL

Peak	RT (min)	Compound name	%
31	25,13	alpha-p-DIMETHYLSTYRENE	0,03
32	26,75	alpha-CUBEBENE	0,05
33	27,26	alpha-LONGIPINENE	0,05
34	27,86	BICYCLOELEMENE	0,01
35	28,07	CYCLOSATIVENE	0,01
36	28,23	YLANGENE	0,02
37	28,86	alpha-COPAENE	0,10
38	29,42	CAMPHOR	0,02
39	29,69	alpha-PINOCAMPHONE	0,04
40	30,31	beta-BOURBONENE	0,04
41	31,41	beta-PINOCAMPHONE	0,03
42	31,54	beta1-CUBEBENE	0,02
43	31,73	LINALOL	0,01
44	32,30	2-DECANONE	0,01
45	32,63	PINOCARVONE	0,04
46	33,10	LONGIFOLENE	0,08
47	33,28	epsilon-CADINENE	0,01
48	33,49	BORNYL ACETATE	0,82
49	33,67	FENCHOL	0,04
50	33,84	TERPINENE-1-OL	0,01
51	34,23	METHYL THYMOL ETHER	0,03
52	34,52	CAMPHENE HYDRATE	0,02
53	34,59	beta-ELEMENE	0,16
54	34,88	beta-CARYOPHYLLENE	1,65
55	35,06	TERPINENE-4-OL	0,10
56	35,27	2-UNDECANONE	0,04
57	35,51	6,9-GUAIADIENE	0,06
58	35,66	AROMADENDRENE	0,09
59	36,36	MYRTENAL	0,08
60	36,69	DECENYL ACETATE ISOMER	0,03

**Disclaimer & Caution**

Please refer to all relevant technical information specific to the product, prior to use. The information contained in this document is obtained from current and reliable sources, New Directions Aromatics Inc, provides the information contained herein, but makes no representation as to its comprehensiveness or accuracy. Individuals receiving this information must exercise their independent judgment in determining its appropriateness for a particular purpose. The user of the product is solely responsible for compliance with all laws and regulations applying to the use of the products, including intellectual property rights of third parties. As the ordinary or otherwise use(s) of this product is outside the control of New Directions Aromatics Inc., no representation or warranty, expressed or implied, is made as to the effect(s) of such use(s), (including damage or injury), or the results obtained. The liability of New Directions Aromatics Inc, is limited to the value of the goods and does not include any consequential loss. New Directions Aromatics Inc, shall not be liable for any errors or delays in the content, or for any actions taken in reliance thereon. New Directions Aromatics Inc, shall not be responsible for any damages resulting from use of or reliance upon this information. In the event of any dispute, the Customer hereby agrees that Jurisdiction is limited to the province of Ontario.

GCMS ANALYSIS (cont'd.)

PRODUCT NAME: PINE ORGANIC ESSENTIAL OIL

Peak	RT (min)	Compound name	%
61	37,04	CADINA-3,5-DIENE	0,04
62	37,48	GERMACRENE A	0,02
63	37,73	Trans-PINOCARVEOL	0,15
64	38,48	SESQUITERPENE	0,01
65	38,63	ZONARENE	0,06
66	38,83	ESTRAGOL	0,01
67	39,07	alpha-HUMULENE	0,25
68	39,12	E-beta-FARNESENE	0,05
69	39,39	Cis-4,5-MUUROLADIENE + SESQUITERPENE	0,08
70	39,42	gamma-SELINENE	0,06
71	40,25	gamma-MUUROLENE	0,24
72	40,52	TERPENYL ACETATE	0,15
73	40,72	alpha-TERPINEOL	0,35
74	40,89	BORNEOL	0,05
75	41,17	VERBENONE	0,02
76	41,54	GERMACRENE D	0,61
77	41,79	CADINADIENE ISOMER	0,02
78	41,89	MUUROLADIENE ISOMER	0,08
79	42,02	beta-SELINENE	0,16
80	42,29	VALENCENE	0,03
81	42,45	alpha-SELINENE	0,10
82	42,54	alpha-MUUROLENE	0,38
83	42,85	BICYCLOGERMACRENE	0,22
84	42,93	METHYL PHENYL PROPANAL	0,02
85	43,29	Trans-PIPERITOL	0,01
86	43,44	SESQUITERPENE	0,01
87	44,22	delta-CADINENE	1,29
88	44,33	gamma-CADINENE	0,48
89	44,49	METHYL SALICYLATE	0,03
90	44,85	2-DODECANONE	0,01

**Disclaimer & Caution**

Please refer to all relevant technical information specific to the product, prior to use. The information contained in this document is obtained from current and reliable sources, New Directions Aromatics Inc, provides the information contained herein, but makes no representation as to its comprehensiveness or accuracy. Individuals receiving this information must exercise their independent judgment in determining its appropriateness for a particular purpose. The user of the product is solely responsible for compliance with all laws and regulations applying to the use of the products, including intellectual property rights of third parties. As the ordinary or otherwise use(s) of this product is outside the control of New Directions Aromatics Inc., no representation or warranty, expressed or implied, is made as to the effect(s) of such use(s), (including damage or injury), or the results obtained. The liability of New Directions Aromatics Inc, is limited to the value of the goods and does not include any consequential loss. New Directions Aromatics Inc, shall not be liable for any errors or delays in the content, or for any actions taken in reliance thereon. New Directions Aromatics Inc, shall not be responsible for any damages resulting from use of or reliance upon this information. In the event of any dispute, the Customer hereby agrees that Jurisdiction is limited to the province of Ontario.

GCMS ANALYSIS (cont'd.)

PRODUCT NAME: PINE ORGANIC ESSENTIAL OIL

Peak	RT (min)	Compound name	%
91	45,48	MENTHADIENOL ISOMER	0,01
92	45,72	CADINA-1,4-DIENE	0,03
93	45,75	MYRTENOL	0,07
94	45,98	CAMPHOLENOL	0,01
95	46,28	alpha-AMORPHENE	0,06
96	47,62	2-TRIDECANONE	0,01
97	47,78	Trans-ANETHOL	0,01
98	48,12	SESQUITERPENE	0,01
99	48,23	cis-CALAMENENE	0,01
100	48,35	trans-CALAMENENE	0,03
101	48,95	p-CYMENE-8-OL	0,01
102	51,75	epi-CUBEBOL	0,01
103	52,71	alpha-CALACORENE	0,01
104	54,49	CUBEBOL	0,01
105	54,75	beta-CALACORENE	0,02
106	56,37	CARYOPHYLLENE EPOXIDE	0,06
107	57,19	PERILLIC ALCOHOL	0,01
108	57,77	E-METHYLEUGENOL	0,03
109	59,31	epoxy-6,7-HUMULENE	0,01
110	59,41	NEROLIDOL	0,01
111	59,91	GERMACRA-1,5-DIEN-4-OL	0,02
112	60,21	epi-CUBENOL	0,03
113	60,62	CUBENOL	0,02
114	61,23	VIRIDIFLOROL	0,01
115	63,55	SPATHULENOL	0,10
116	65,71	T-CADINOL	0,06
117	66,53	alpha-MUUROLOL	0,06
118	67,05	delta-CADINOL	0,02
119	67,71	GERANYLGERANIADIENE ISOMER Mw=272	0,06
120	68,32	ISOSPATHULENOL	0,01

**Disclaimer & Caution**

Please refer to all relevant technical information specific to the product, prior to use. The information contained in this document is obtained from current and reliable sources, New Directions Aromatics Inc, provides the information contained herein, but makes no representation as to its comprehensiveness or accuracy. Individuals receiving this information must exercise their independent judgment in determining its appropriateness for a particular purpose. The user of the product is solely responsible for compliance with all laws and regulations applying to the use of the products, including intellectual property rights of third parties. As the ordinary or otherwise use(s) of this product is outside the control of New Directions Aromatics Inc., no representation or warranty, expressed or implied, is made as to the effect(s) of such use(s), (including damage or injury), or the results obtained. The liability of New Directions Aromatics Inc, is limited to the value of the goods and does not include any consequential loss. New Directions Aromatics Inc, shall not be liable for any errors or delays in the content, or for any actions taken in reliance thereon. New Directions Aromatics Inc, shall not be responsible for any damages resulting from use of or reliance upon this information. In the event of any dispute, the Customer hereby agrees that Jurisdiction is limited to the province of Ontario.

GCMS ANALYSIS (cont'd.)

PRODUCT NAME: PINE ORGANIC ESSENTIAL OIL

Peak	RT (min)	Compound name	%
121	68,60	alpha-CADINOL	0,11
122	69,57	EUDESMA-7(11)-EN-4-OL	0,01
		<b>TOTAL</b>	<b>99,98</b>

Disclaimer & Caution

Please refer to all relevant technical information specific to the product, prior to use. The information contained in this document is obtained from current and reliable sources, New Directions Aromatics Inc, provides the information contained herein, but makes no representation as to its comprehensiveness or accuracy. Individuals receiving this information must exercise their independent judgment in determining its appropriateness for a particular purpose. The user of the product is solely responsible for compliance with all laws and regulations applying to the use of the products, including intellectual property rights of third parties. As the ordinary or otherwise use(s) of this product is outside the control of New Directions Aromatics Inc., no representation or warranty, expressed or implied, is made as to the effect(s) of such use(s), (including damage or injury), or the results obtained. The liability of New Directions Aromatics Inc, is limited to the value of the goods and does not include any consequential loss. New Directions Aromatics Inc, shall not be liable for any errors or delays in the content, or for any actions taken in reliance thereon. New Directions Aromatics Inc, shall not be responsible for any damages resulting from use of or reliance upon this information. In the event of any dispute, the Customer hereby agrees that Jurisdiction is limited to the province of Ontario.