

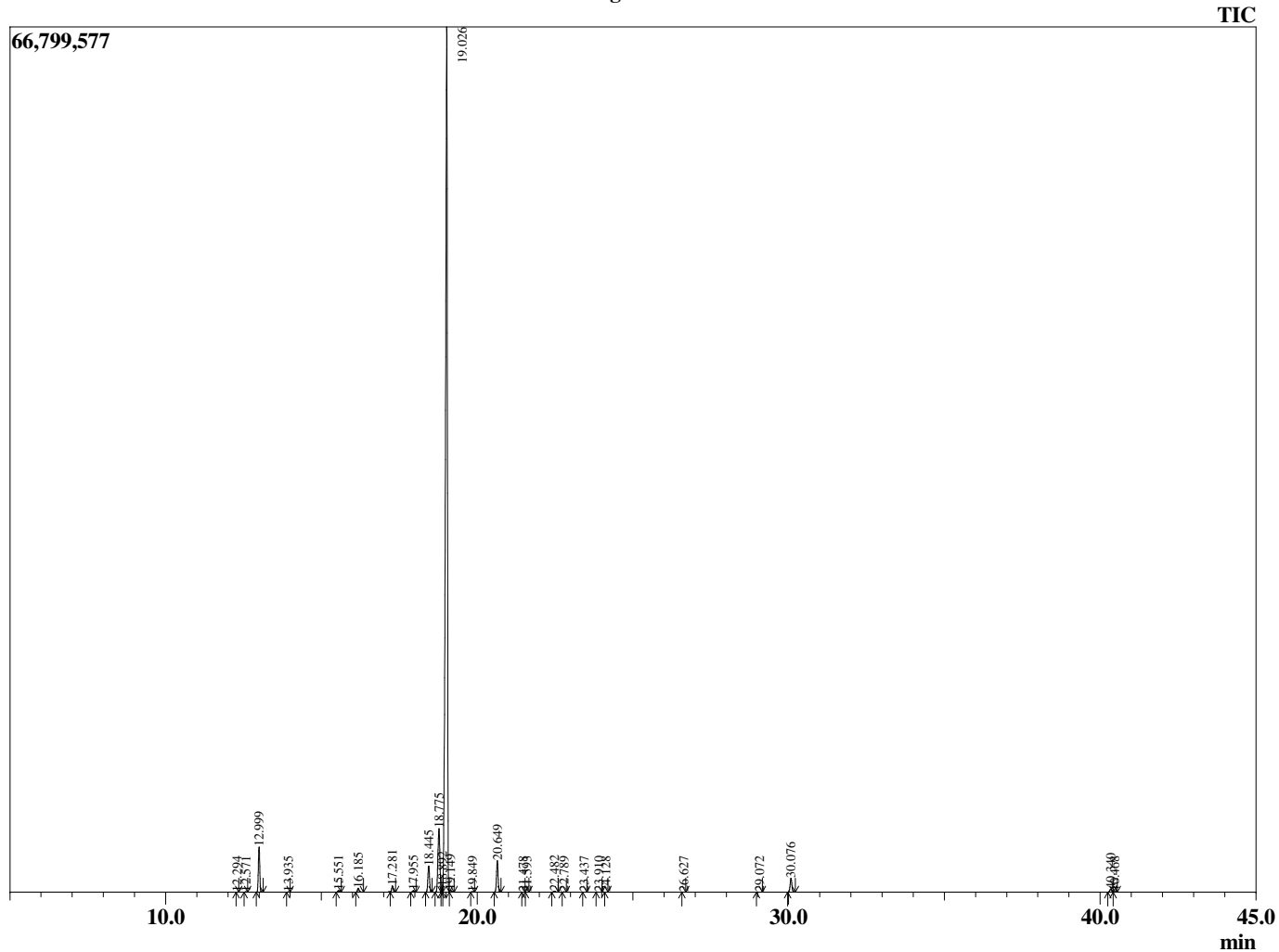
Sample Information

Analyzed by : T. Wortham  
 Analyzed : 1/16/2020 5:28:29 PM  
 Sample Type : Essential Oil  
 Sample Name : EucGlo2  
 Injection Volume : 0.10  
 Lot Number : H0D0114A  
 Instrument ID : GC-3

Peak Report TIC

R.Time	Name	Area%
12.294	Hashishene	0.00
12.571	alpha-Thujene	0.02
12.999	alpha-Pinene	3.01
13.935	Camphene	0.01
15.551	beta-Pinene	0.11
16.185	Myrcene	0.29
17.281	alpha-Phellandrene	0.45
17.955	alpha-Terpinene	0.11
18.445	para-Cymene	2.08
18.775	Limonene	6.13
18.892	beta-Phellandrene	0.22
19.026	1,8-cineole	83.24
19.149	cis-beta-Ocimene	0.13
19.849	trans-beta-Ocimene	0.02
20.649	gamma-Terpinene	2.50
21.478	cis-Linalool oxide (furanoid)	0.01
21.593	Pinol	0.01
22.482	Terpinolene	0.09
22.789	para-Cymenene	0.01
23.437	Linalool	0.01
23.910	Isoamyl isovalerate	0.01
24.128	Thujol	0.00
26.627	trans-Verbenol	0.01
29.072	Terpinen-4-ol	0.01
30.076	alpha-Terpineol	1.24
40.340	alpha-Terpinyl acetate	0.27
40.468	gamma-Terpinyl acetate	0.03
		100.00

Chromatogram EucGlo2



© Copyright 2020 The Perfumery, All rights reserved.

This report is provided as a courtesy to our customers for their evaluation only. Any publishing, copying, use, dissemination, or distribution of this report, including online, without the express written permission of The Perfumery is strictly prohibited. To inquire about licensing analytical reporting services, please contact orders@theperfumery.com.