

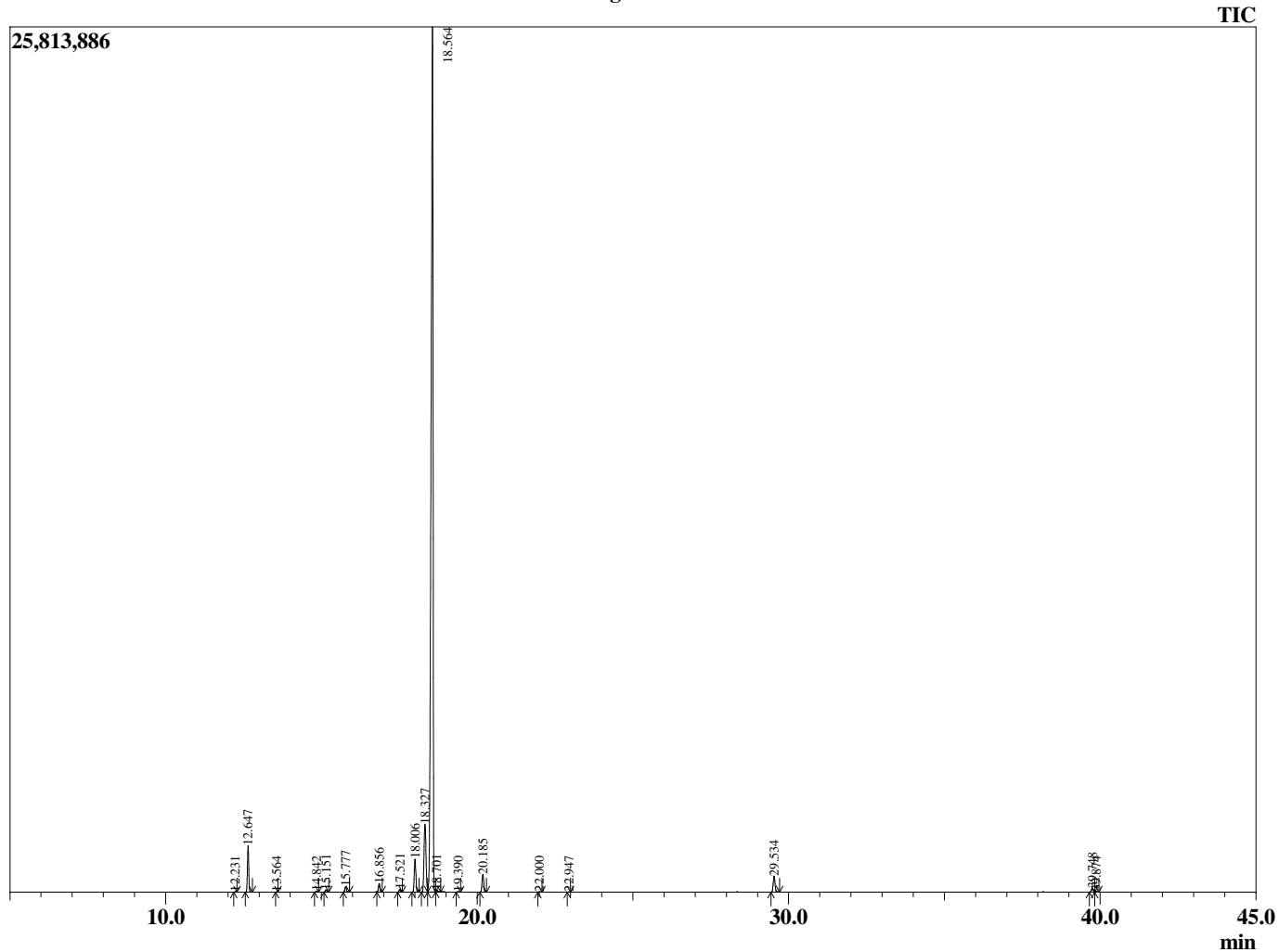
Sample Information

Analyzed by : T. Wortham
 Analyzed : 9/10/2019 4:05:16 PM
 Sample Type : Essential Oil
 Sample Name : EucGlo2
 Injection Volume : 0.10
 Lot Number : E0C0909P
 Instrument ID : GC-4

Peak Report TIC

R.Time	Name	Area%
12.231	alpha-Thujene	0.02
12.647	alpha-Pinene	3.02
13.564	Camphene	0.01
14.842	Sabinene	0.05
15.151	beta-Pinene	0.16
15.777	Myrcene	0.39
16.856	alpha-Phellandrene	0.63
17.521	alpha-Terpinene	0.21
18.006	para-Cymene	2.59
18.327	Limonene	6.52
18.564	1,8-Cineole	83.02
18.701	cis-beta-Ocimene	0.15
19.390	trans-beta-Ocimene	0.02
20.185	gamma-Terpinene	1.42
22.000	Terpinolene	0.03
22.947	Linalool	0.01
29.534	alpha-Terpineol	1.39
39.748	alpha-Terpinyl acetate	0.32
39.874	Unidentified	0.04
		100.00

Chromatogram EucGlo2



© Copyright 2019 The Perfumery, All rights reserved.

This report is provided as a courtesy to our customers for their evaluation only. Any publishing, copying, use, dissemination, or distribution of this report, including online, without the express written permission of The Perfumery is strictly prohibited. To inquire about licensing analytical reporting services, please contact orders@theperfumery.com.