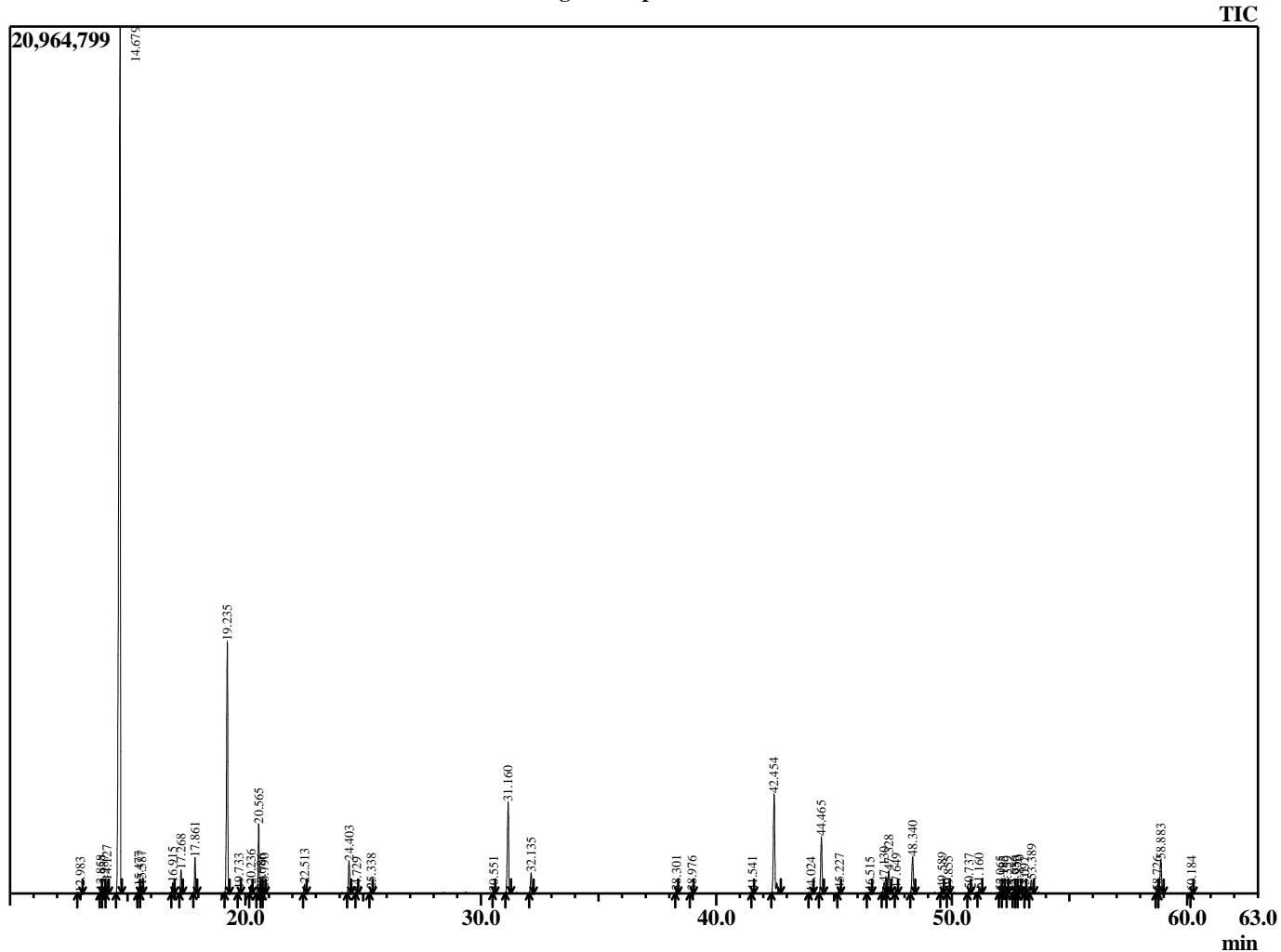


Sample Information

Analyzed by : B. Harris  
 Analyzed : 7/21/2015 8:32:38 PM  
 Sample Type : Essential Oil  
 Sample Name : CupSem2  
 Lot Number : 12233  
 Injection Volume : 0.10

Chromatogram CupSem2 Lot 12233



R.Time	Name	Area%
12.983	Bornylene	0.02
13.858	Pinene isomer	0.08
13.987	Tricyclene	0.10
14.127	Thujene <alpha->	0.50
14.679	Pinene <alpha->	52.78
15.477	Fenchene <alpha->	0.26
15.587	Camphene	0.30
16.915	Sabinene	0.45
17.268	Pinene <beta->	1.01
17.861	Myrcene	1.46
19.235	3-Carene	12.38
19.733	Terpinene <alpha->	0.17
20.236	Cymene <para->	0.40
20.565	Limonene	3.19
20.686	Phellandrene <beta->	0.12
20.790	1,8-Cineole	0.19
22.513	Terpinene <gamma->	0.42
24.403	Terpinolene	1.57
24.729	Dehydro-p-cymene	0.04
25.338	Linalool	0.19
30.551	Borneol	0.05
31.160	Terpinen-4-ol	4.98
32.135	Terpineol <alpha->	1.05
38.301	Bornyl acetate	0.09
38.976	Thujanol acetate <neiso>	0.10
41.541	Terpinyl acetate <4>	0.09
42.454	Terpinyl acetate <alpha->	6.05
44.024	Isoledene	0.03
44.465	Copaene <alpha->	3.10
45.227	Cubebene <beta->	0.24
46.515	Cyperene	0.06
47.130	Cedrene <alpha->	0.65
47.328	Caryophyllene <trans>	1.32
47.649	Cedrene <beta->	0.20
48.340	Thujopsene <cis->	2.12
49.589	Humulene <alpha->	0.28
49.855	(-)-Alloaromadendrene	0.07
50.737	Cadina-1(6),4-diene <trans>	0.20
51.160	Germacrene D	0.24
52.065	Patchoulene	0.08
52.185	Muurolene <alpha->	0.06
52.359	Himachalene <beta->	0.04
52.656	Cedrene-V6	0.07
52.753	Chamigrene <alpha->	0.10
52.870	Cuparene	0.13
53.097	Cadinene <gamma->	0.04
53.389	Cadinene <delta->	0.73
58.726	Widdrol	0.09
58.883	Cedrol	2.06
60.184	Acorenol <alpha->	0.07
		100.00