

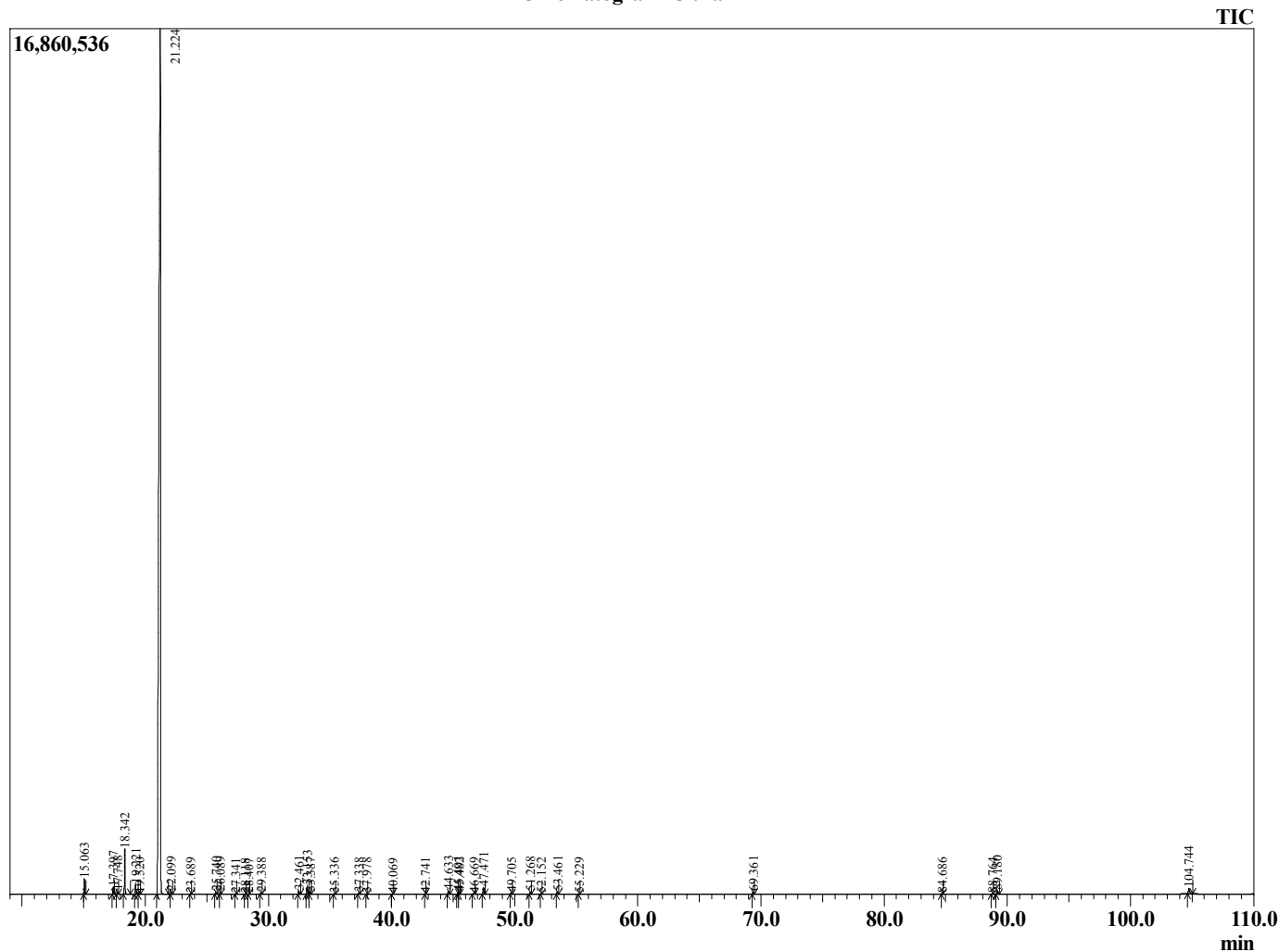
Sample Information

Analyzed by : B. Harris
Analyzed : 6/3/2020 10:16:37 PM
Sample Type : Essential Oil
Sample Name : CitPar2
Injection Volume : 0.10
Lot Number : F0D0601F
Instrument : GC-2

Peak Report TIC

R.Time	Name	Area%
15.063	alpha-Pinene	0.58
17.397	Sabinene	0.31
17.748	beta-Pinene	0.12
18.342	Myrcene	1.91
19.221	Octanal	0.46
19.520	alpha-Terpinene	0.04
21.224	Limonene	93.66
22.099	(E)-beta-Ocimene	0.08
23.689	1-Octanol	0.03
25.740	Linalool	0.08
26.089	Nonanal	0.07
27.341	trans-p-Mentha-2,8-dienol	0.01
28.118	cis-Limonene oxide	0.01
28.407	trans-Limonene oxide	0.01
29.388	Citronellal	0.05
32.461	alpha-Terpineol	0.14
33.153	Decanal	0.41
33.387	Octyl acetate	0.05
35.336	Neral	0.03
37.338	Geranial	0.05
37.978	Perillaldehyde	0.01
40.069	Unidentified	0.01
42.741	Unidentified	0.01
44.633	alpha-Copene	0.19
45.401	beta-Cubebene	0.11
45.482	beta-Elemene	0.04
46.669	Dodecanal	0.04
47.471	trans-beta-Caryophyllene	0.35
49.705	alpha-Humulene	0.05
51.268	Germacrene D	0.08
52.152	Bicyclogermacrene	0.04
53.461	delta-Cadinene	0.14
55.229	Elemol	0.04
69.361	Nootkatone	0.14
84.686	Unidentified furocoumarin	0.02
88.764	Isogeijerin	0.04
89.180	Unidentified furocoumarin	0.16
104.744	Auraptene	0.42
		100.00

Chromatogram CitPar2



© Copyright 2020 The Perfumery, All rights reserved.

This report is provided as a courtesy to our customers for their evaluation only. Any publishing, copying, use, dissemination, or distribution of this report, including online, without the express written permission of The Perfumery is strictly prohibited. To inquire about licensing analytical reporting services, please contact orders@theperfumery.com.