

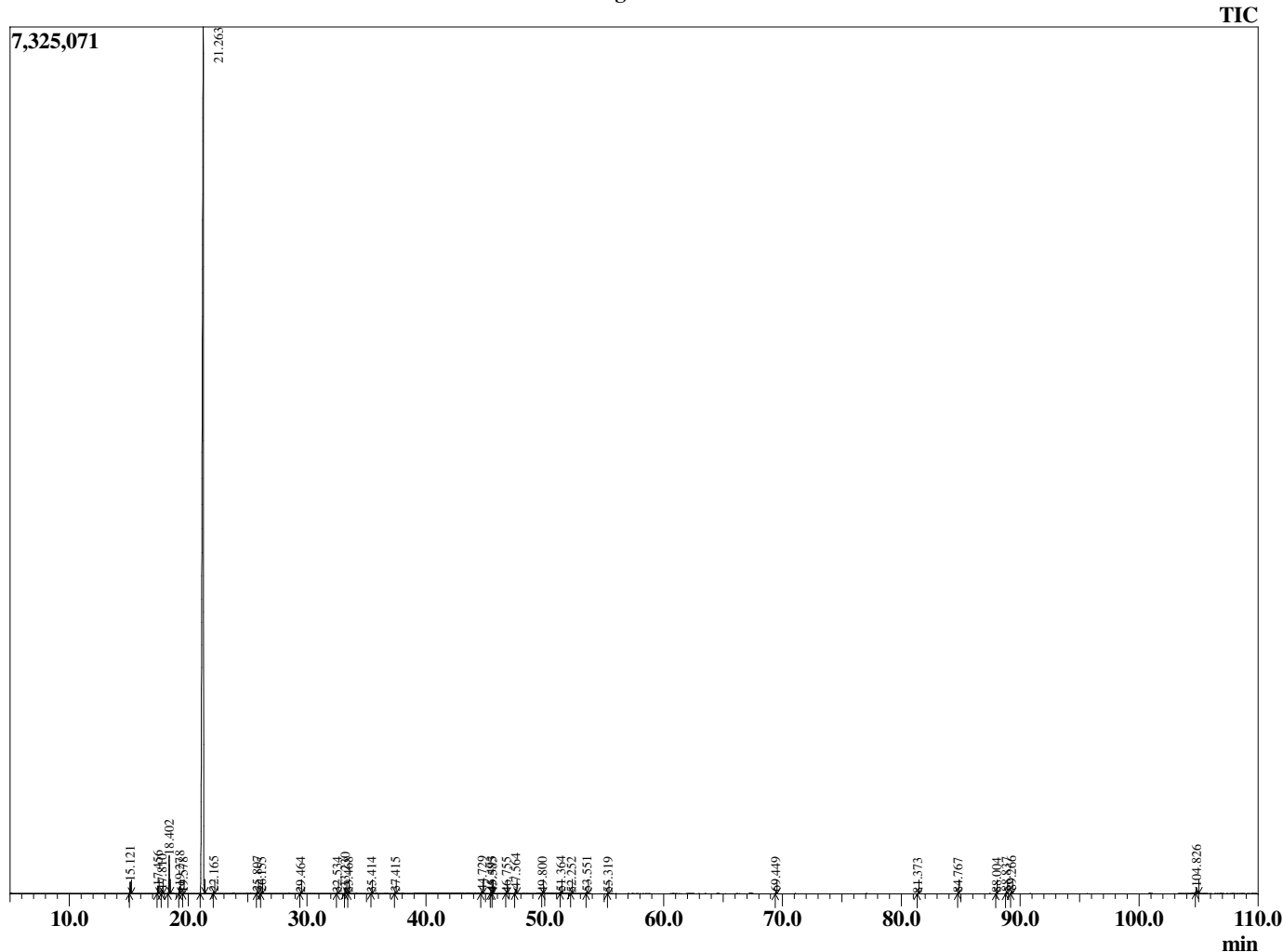
Sample Information

Analyzed by : T. Wortham  
 Analyzed : 9/27/2019 4:18:45 PM  
 Sample Type : Essential Oil  
 Sample Name : CitPar2  
 Injection Volume : 0.10  
 Lot Number : E0C0826C [2]  
 Instrument ID : GC-2

Peak Report TIC

R.Time	Name	Area%
15.121	alpha-Pinene	0.54
17.456	Sabinene	0.37
17.810	beta-Pinene	0.18
18.402	Myrcene	1.91
19.278	Octanal	0.34
19.578	alpha-Phellandrene	0.03
21.263	Limonene	94.05
22.165	trans-beta-Ocimene	0.08
25.807	Linalool	0.10
26.155	Nonanal	0.06
29.464	Citronellal	0.06
32.534	alpha-Terpineol	0.05
33.230	Decanal	0.31
33.468	Octyl acetate	0.03
35.414	Neral	0.02
37.415	Geranial	0.07
44.729	alpha-Copaene	0.17
45.493	beta-Cubebene	0.11
45.585	beta-Elementene	0.03
46.755	Unidentified	0.02
47.564	beta-Caryophyllene	0.30
49.800	alpha-Humulene	0.04
51.364	Germacrene D	0.08
52.252	Bicyclogermacrene	0.03
53.551	delta-Cadinene	0.12
55.319	Elemol	0.04
69.449	Nootkatone	0.10
81.373	Bergapten	0.01
84.767	Osthole	0.01
88.004	Unidentified furanocoumarin	0.03
88.837	Isogejerin	0.09
89.266	Unidentified furanocoumarin	0.14
104.826	Auraptene	0.47
		100.00

Chromatogram CitPar2



© Copyright 2019 The Perfumery, All rights reserved.

This report is provided as a courtesy to our customers for their evaluation only. Any publishing, copying, use, dissemination, or distribution of this report, including online, without the express written permission of The Perfumery is strictly prohibited. To inquire about licensing analytical reporting services, please contact orders@theperfumery.com.