

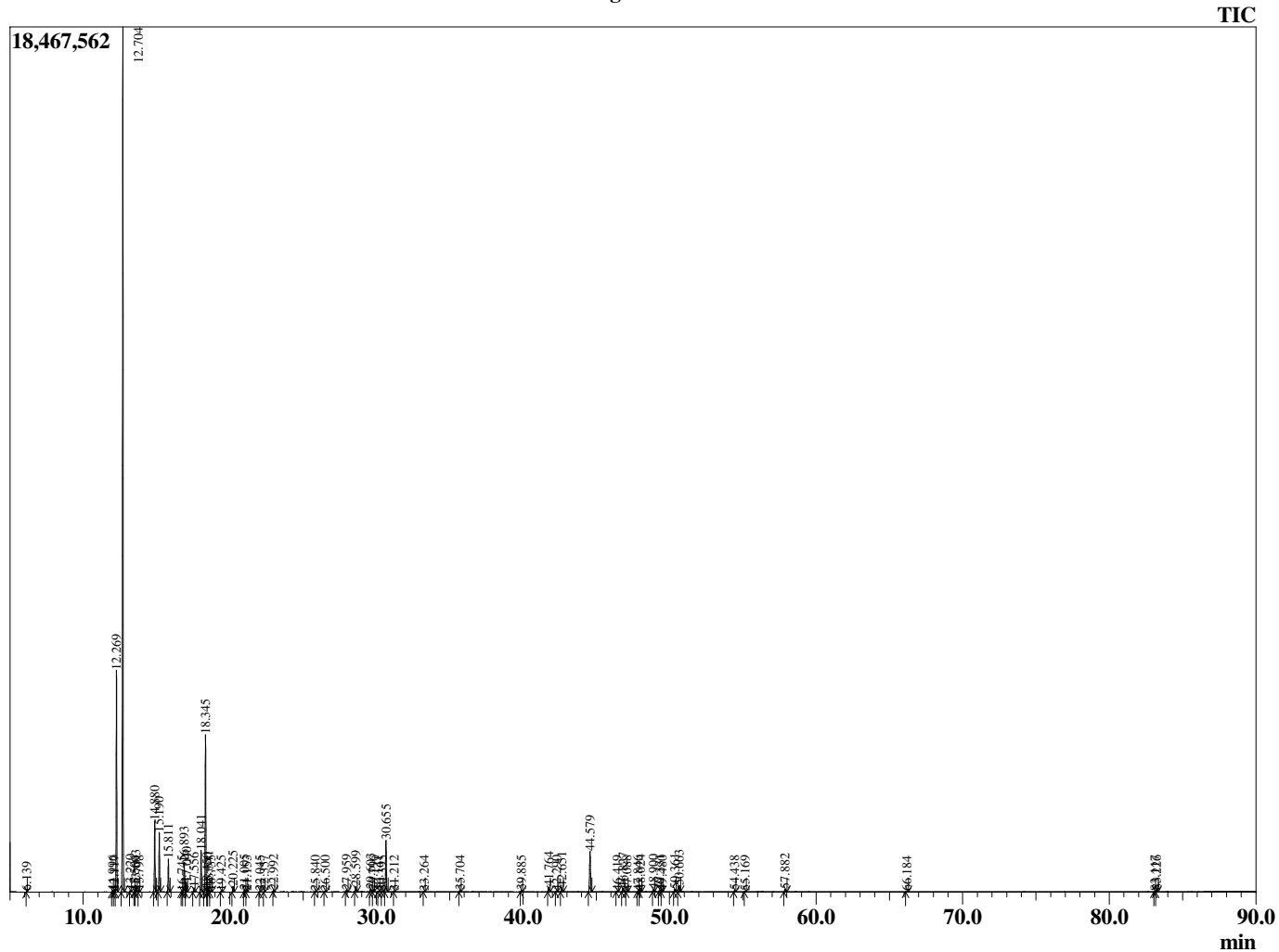
Sample Information

Analyzed by : T. Wortham  
 Analyzed : 4/16/2019 9:25:01 PM  
 Sample Type : Essential Oil  
 Sample Name : BosCar5  
 Injection Volume : 0.10  
 Lot Number : E0C0415F  
 Instrument ID : GC-4

Peak Report TIC

R.Time	Name	Area%
6.139	Toluene	0.03
11.996	Hashishene	0.07
12.117	Tricyclene	0.06
12.269	alpha-Thujene	11.91
12.704	alpha-Pinene	49.59
13.220	Thujadiene isomer	0.09
13.504	alpha-Fenchene	0.03
13.603	Camphene	0.36
13.798	Thuja-2,4(10)diene	0.08
14.880	Sabinene	4.01
15.190	beta-Pinene	3.49
15.811	Myrcene	1.97
16.745	Pseudolimonene	0.06
16.893	alpha-Phellandrene	1.86
17.040	delta-3-Carene	0.61
17.556	alpha-Terpinene	0.26
18.041	para-Cymene	2.65
18.345	Limonene	9.90
18.450	beta-Phellandrene	0.21
18.541	1,8-Cineole	0.35
18.735	cis-beta-Ocimene	0.08
19.425	trans-beta-Ocimene	0.07
20.225	gamma-Terpinene	0.37
21.005	n-Octanol	0.14
21.153	Pinol	0.05
22.045	Terpinolene	0.08
22.357	para-Cymenene	0.06
22.992	Linalool	0.13
25.840	trans-Pinocarveol	0.06
26.500	alpha-Phellandren-8-ol	0.06
27.959	para-Mentha-1,5-dien-8-ol	0.12
28.599	Terpinen-4-ol	0.40
29.603	alpha-Terpineol	0.21
29.796	Estragole	0.08
30.141	alpha-Phellandrene epoxide	0.04
30.395	Verbenone	0.06
30.655	Octyl acetate	3.71
31.212	trans-Carveol	0.03
33.264	Unidentified	0.04
35.704	Bornyl acetate	0.11
39.885	alpha-Cubebene	0.08
41.764	alpha-Copaene	0.38
42.290	beta-Bourbonene	0.06
42.651	beta-Elementene	0.33
44.579	beta-Caryophyllene	3.34
46.419	trans-Murrola-3,5-diene	0.05
46.827	alpha-Humulene	0.30
47.088	Alloaromadendrene	0.07
47.846	10-beta-H-Cadina-1(6),4-diene	0.08
48.024	trans-Cadina-1(6),4-diene	0.13
48.900	beta-Selinene	0.16
49.331	alpha-Selinene	0.15
49.480	alpha-Muuroolene	0.08
50.361	gamma-Cadinene	0.20
50.663	delta-Cadinene	0.52
54.438	Caryophyllene oxide	0.09
55.169	Viridiflorol	0.06
57.882	alpha-Muurolol (=Torreyol)	0.23
66.184	Phellandrene dimer	0.04
83.117	Incensole	0.04
83.226	Serratol	0.10

Chromatogram BosCar5



© Copyright 2019 The Perfumery, All rights reserved.

This report is provided as a courtesy to our customers for their evaluation only. Any publishing, copying, use, dissemination, or distribution of this report, including online, without the express written permission of The Perfumery is strictly prohibited. To inquire about licensing analytical reporting services, please contact orders@theperfumery.com.