

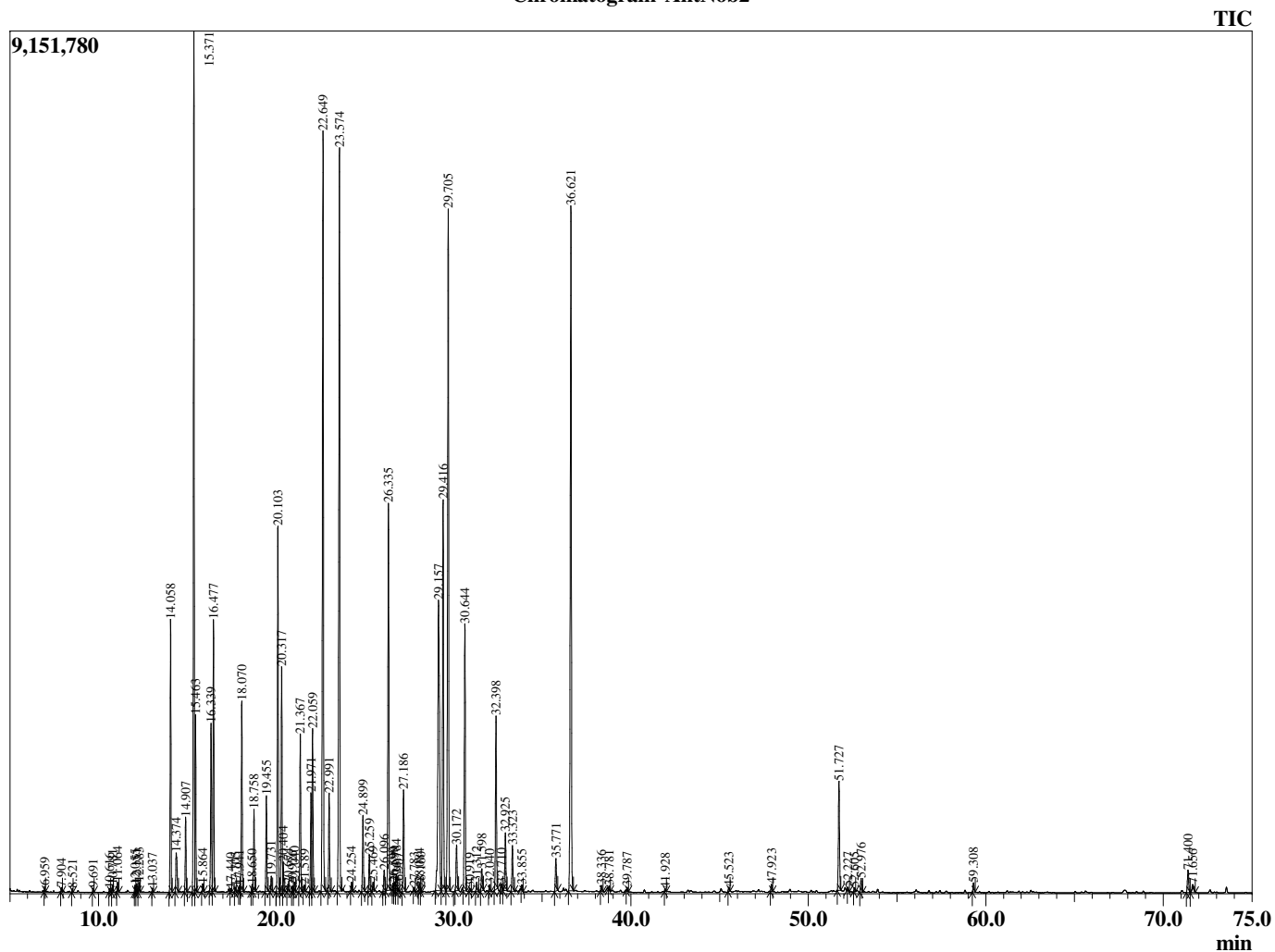
Sample Information

Analyzed by : T. Wortham
Analyzed : 2/4/2019 5:35:00 PM
Sample Type : Essential Oil
Sample Name : AntNob2
Injection Volume : 0.10
Lot Number : E0C0204A
Instrument : GC-2

Peak Report TIC

R.Time	Name	Area%
6.959	2-Methyl butanol	0.04
7.904	Butyl acetate	0.03
8.521	1-Octene	0.02
9.691	Methyl tiglate	0.03
10.616	3-Methyl pentanol	0.03
10.781	Ethyl 2-methylbutyrate	0.06
11.064	Propyl isobutyrate	0.08
12.055	Isopentyl acetate	0.06
12.151	2-Methylbutyl acetate	0.07
12.283	Propyl methacrylate	0.08
13.037	Unidentified	0.03
14.058	Isobutyl isobutyrate	2.51
14.374	Prenyl acetate	0.57
14.907	2,5,8-Trimethyl nonane	0.71
15.371	alpha-Pinene	8.56
15.463	Isobutyl methacrylate	1.59
15.864	Propyl 2-methylbutyrate	0.07
16.339	3-Methylcyclohexanone	1.85
16.477	Isobutyl butyrate	2.64
17.440	Isoamyl propionate	0.03
17.705	Sabinene	0.04
17.941	Butyl methacrylate	0.05
18.070	beta-Pinene	1.97
18.650	Myrcene	0.07
18.758	Ethyl tiglate isomer	0.85
19.455	Isobutyl 2-methylbutyrate	0.98
19.731	Isobutyl isovalerate	0.16
20.103	Isoamyl isobutyrate	3.83
20.317	2-Methylbutyl isobutyrate	2.35
20.404	Unidentified	0.27
20.674	But-3-en-1-yl 2-methylbutanoate	0.08
20.926	Unidentified	0.05
21.040	para-Cymene	0.10
21.367	Limonene	1.68
21.589	1,8-Cineole	0.06
21.971	Pentyl methacrylate	1.06
22.059	Isopentyl methacrylate	1.74
22.649	Isobutyl angelate	9.09
22.991	Prenyl isobutyrate	1.04
23.574	Methallyl angelate	9.03
24.254	Hexyl propionate	0.09
24.899	Camphenilone	0.84
25.259	Butyl angelate	0.40
25.469	Isobutyl tiglate	0.10
26.096	Isoamyl isovalerate	0.24
26.335	2-Methylbutyl-2-methylbutyrate	4.58
26.599	Unidentified	0.07
26.690	2-Methylbutyl isovalerate	0.09
26.784	Butyl 3-methylpentanoate	0.17
26.907	Unidentified	0.03
27.186	Hexyl isobutyrate	1.15
27.783	Unidentified	0.03
28.084	alpha-Campholenal	0.09
28.160	Unidentified	0.03
29.157	trans-Pinocarveol	5.52
29.416	Isoamyl angelate	4.86
29.705	Isoamyl tiglate	8.48
30.172	Amyl angelate isomer	0.59
30.644	Pinocarvone	3.23
30.919	2-Methyl-2-butene angelate	0.04
31.312	Borneol	0.11
31.598	Isopinocamphe	0.27

Chromatogram AntNob2



© Copyright 2018 The Perfumery, All rights reserved.

This report is provided as a courtesy to our customers for their evaluation only. Any publishing, copying, use, dissemination, or distribution of this report, including online, without the express written permission of The Perfumery is strictly prohibited. To inquire about licensing analytical reporting services, please contact orders@theperfumery.com.

R.Time	Name	Area%
32.040	Unidentified	0.08
32.398	2-Methyl-2-butene angelate	2.03
32.710	Unidentified	0.09
32.925	Myrtenal	0.76
33.323	3-Methyl-3-methylpentyl butanoate	0.56
33.855	Isopentyl hexanoate	0.05
35.771	2-Hydroxy-2-methyl-but-3-enyl 2-methyl-2-c	0.40
36.621	4-Methyl amyl angelate	8.86
38.336	3-cis-Hexenyl angelate	0.07
38.781	Hexyl angelate	0.04
39.787	Unidentified	0.04
41.928	Unidentified	0.03
45.523	Unidentified	0.05
47.923	beta-Caryophyllene	0.08
51.727	Germacrene D	1.42
52.227	beta-Selinene	0.03
52.605	Bicyclogermacrene	0.04
52.976	(E,E)-alpha-Farnesene	0.17
59.308	Unidentified	0.12
71.400	Neophytadiene	0.33
71.656	Phytone	0.17
		100.00