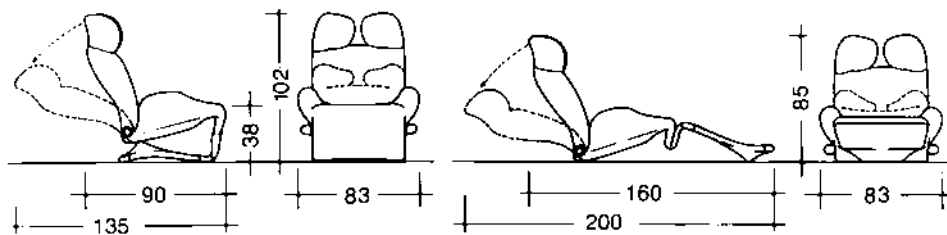


Wink

Armchair - Poltrona
Design - Mario Bellini
1979



Structure | Struttura

Structure in tubular steel with base that folds forward.
Struttura in tubolare d'acciaio dotata di base ribaltabile in avanti.

Padding | Imbottitura

Polyurethane foam and polyester batting.
Polyurethane foam and polyester batting.

Upholstery* | Rivestimento

**Once you've chosen your fabric, please contact our Customer Care Team so we can verify the availability of your selection.*
**Una volta scelto il rivestimento, contatta il customer service per verificare che sia disponibile*

Fabrics

Tessuti

Cat. E:

E - Eremo | Composition: 45% Acrylic - 33% Polyester - 22% Wool
Composizione: 45% Acrilico - 33% Poliestere - 22% Lana



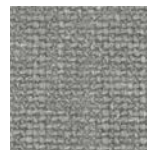
13E500
White
Bianco



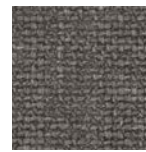
13E501
Ivory
Avorio



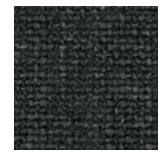
13E502
Beige
Beige



13E503
Pearl
Perla



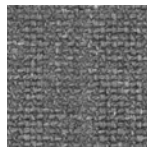
13E504
Mole
Talpa



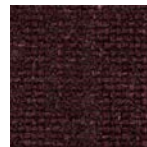
13E505
Anthracite
Antracite



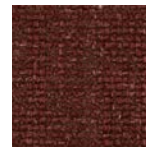
13E506
Carbon
Carbone



13E507
Aluminum
Alluminio



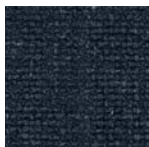
13E508
Wine
Vinaccia



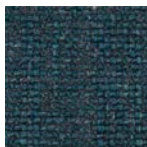
13E509
Rust
Ruggine



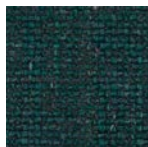
13E510
Sky
Cielo



13E511
Night
Notte



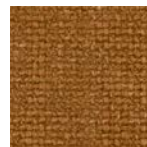
13E512
Oil
Petrolio



13E513
Teal
Ottanio



13E514
Olive
Oliva



13E515
Ochre
Ocra

E - Perbacco | Composition: 6% Cott. - 59% Linen - 25% Acryl. - 4% Poly. - 6% Polyamm.
Composizione: 6% Cot. - 59% Lino - 25% Acril. - 4% Poliest. - 6% Poliamm.



13E436



13E437



13E438



13E439



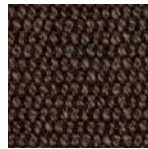
13E440



13E441



13E442



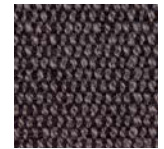
13E443



13E444



13E445

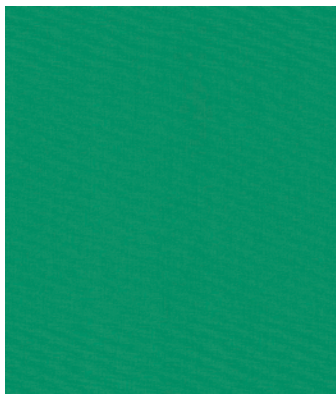


13E446



13E447

E - Popeline | Composition: 100% Cotton
Composizione: 100% Cotone



13E059



13E060



13E061



13E062



13E066



13E067



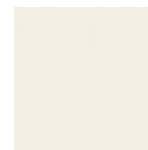
13E068



13E070



13E071



13E072

Cat. F: Francoforte |

Composition: 63% Cotton - 37% Linen
Composizione: 63% Cotone - 37% Lino



13F000
White
Bianco



13F091
Ivory
Avorio



13F092
Ash
Cenere



13F093
Beige
Beige



13F095
Hazelnut
Nocciola



13F096
Raspberry
Lampone



13F097
Blue Navy
Blu Navy



13F098
Emerald
Smeraldo



13F099
Pistachio
Pistacchio



13F101
Acid Green
Verde Acido



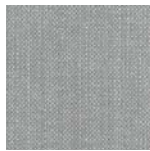
13F102
Clay
Argilla



13F103
Light Blue
Azzurro



13F104
Sky
Cielo



13F105
Gray
Grigio



13F106
Smoke
Fumo



13F107
Anthracite
Antracite

Cat. L: Lincoln |

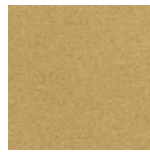
Composition: 100% Wool
Composizione: 100% Lana



13L570
Ivory
Avorio



13L571
Ash
Cenere



13L572
Sand
Sabbia



13L573
Tabacco
Tobacco



13L574
Saffron
Zafferano



13L575
Rust
Ruggine



13L576
Wine
Vinaccia



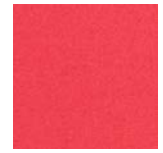
13L577
Geranium
Geraneo



13L578
Raspberry
Lampone



13L579
Tomato
Pomodoro



13L580
Fuchsia
Fuxia



13L581
Cement
Cemento



13L582
Stone
Pietra



13L583
Oil
Petrolio



13L584
Olive
Oliva



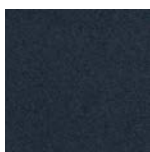
13L585
Cobalt Blue
Blu Cobalto



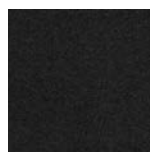
13L586
Violet Blue
Blu Violetto



13L587
Night Blue
Blu Notte



13L588
Anthracite
Antracite



13L589
Black
Nero

Cat. O:

O - Otterlo |

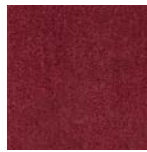
Composition: 60% Wool - 20% Polyester - 20% Polyamide
Composizione: 60% Lana - 20% Poliestere - 20% Poliammidica



13O050
Oil
Petrolio



13O051
Canary
Canarino



13O052
Wine
Vinaccia



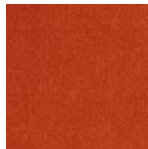
13O053
Pink
Rosa



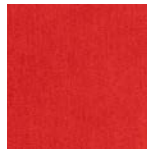
13O054
Night Blue
Blu Note



13O055
Prussian
Prussia



13O056
Rust
Ruggine



13O057
Cardinal
Cardinale



13O059
Blue
Blu



13O061
Stripes Cenere
Stripes Ash



13O062
Stripes Oil
Striples Petrolio



13O063
Stripes Pink
Stripes Rosa

Leather |
Pelle

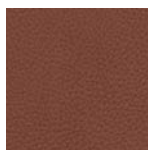
Imperfections and unevenness are characteristics of this type of leather which is not treated; this to guarantee the maximum degree of transpiration and its genuineness.

Imperfezioni e irregolarità sono caratteristiche di questo tipo di pelle, che non è trattato con alcun prodotto coprente per garantire massima traspirabilità e naturalezza.

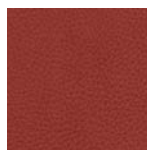
Y - Extra |



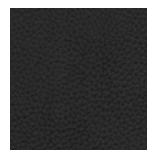
13Y244
Sand
Sabbia



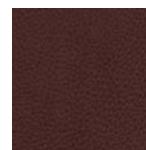
13Y246
Earth
Terra



13Y251
Bulgarian Red
Rosso Bulgaro



13Y253
Black
Nero



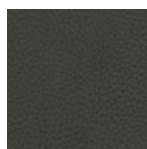
13Y255
Prune
Prugna



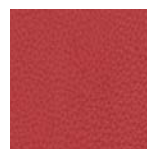
13Y257
Titanium
Titanio



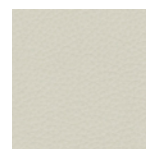
13Y258
Smoke
Fumo



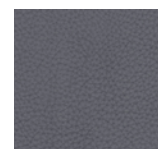
13Y260
Moss
Muschio



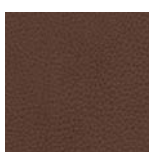
13Y274
Rust
Ruggine



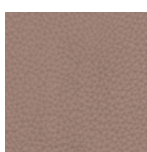
13Y276
Ivory
Avorio



13Y280
Warm Gray
Grigio Caldo



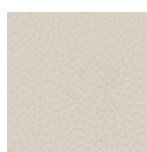
13Y281
Brown
Marrone



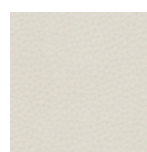
13Y282
Coffe with Milk
Caffelatte



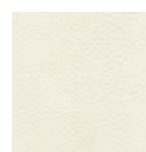
13Y283
Barley
Orzo



13Y284
Desert
Deserto



13Y285
Ash
Cenere



13Y286
Dirty White
Bianco Sporco

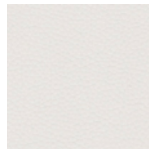
X - Scozia |



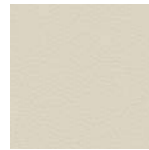
13X201
Ambra
Amber



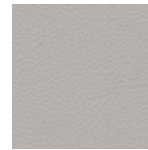
13X202
Tasta di Moro
Brown



13X247
Bianco
White



13X269
Panna
Cream



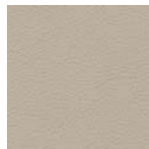
13X276
Metallo
Metal



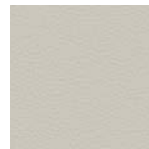
13X290
Carminio
Carmine



13X295
Corrida
Bullfight



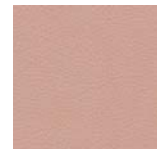
13X326
Deserto
Desert



13X328
Cenere
Ash



13X330
Grigio
Gray



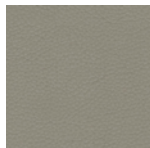
13X331
Cipria
Face Powder



13X332
Castagna
Chestnut



13X333
Moka
Moka



13X334
Fango
Mud



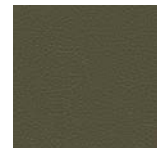
13X335
Verde Menta
Mint Green



13X336
Cielo
Sky



13X337
Verde Bosco
Forest Green



13X338
Verde Oliva
Olive Green



13X339
Cedro
Cedar



13X340
Bulgaro
Bulgarian



13X341
Petrolio
Petroleum



13X342
Oceano
Ocean



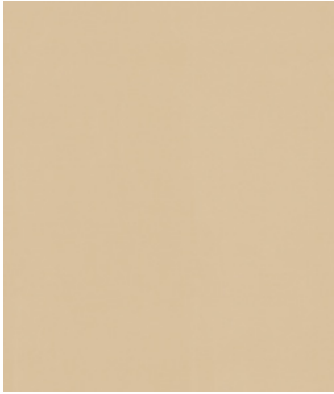
13X606
Grafite
Graphite

Z - Naturale |

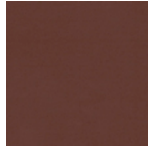


13Z200
Natural
Naturale

Z - Naturale 08 |



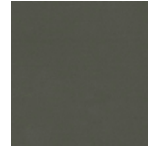
13Z300
Naturale
Natural



13Z302
Brown
Marrone



13Z303
Coffee
Caffé



13Z304
Graphite
Grafite



13Z305
Black
Nero

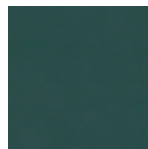
Z - Naturale 15 |



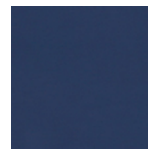
13Z306
Mud
Fango



13Z307
Red
Rosso



13Z308
Green
Verde

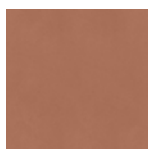


13Z309
Blue
Blu

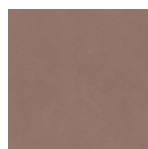
Z - Naturale ZZ |



13Z360
Natural
Naturale



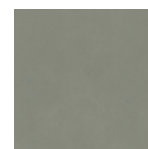
13Z361
Tabacco
Tabacco



13Z362
Mud
Fango



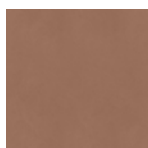
13Z363
Gray
Grigio



13Z364
Moss
Muschio



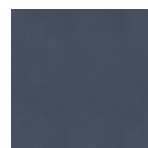
13Z365
Forest
Foresta



13Z366
Walnuts
Noce



13Z367
Moka
Moka



13Z368
Ocean
Oceano