



## Vanity Fair XC

Armchair - Poltrona  
Design - Poltrona Frau Style & Design Centre



Novant'anni e non sentirli. Risale infatti al lontano 1930 la messa in produzione del "modello 904", conosciuto dal 1984 con il nome Vanity Fair. Il progetto originale pare sia stato rielaborato da Poltrona Frau a partire dai disegni lasciati da Renzo Frau alla moglie Savina. Con il passare degli anni, Vanity Fair è diventata una delle icone universalmente riconosciute del design italiano, emblema dell'azienda. Una storia che, arrivati al novantesimo anno, Poltrona Frau ha deciso di festeggiare lanciando la Vanity Fair XC. L'azienda ha chiesto al designer Roberto Lazzeroni di rivisitare Vanity Fair, adattandone le proporzioni agli stili di vita di oggi. Ne è nata una versione rispettosa dell'originale ma ancora più comoda e accogliente.

### CARATTERISTICHE TECNICHE

#### POLTRONA

**Struttura portante.** Massello di faggio stagionato.

**Molleggio.** Molle biconiche in acciaio legate a mano e fissate a cinghie di juta.

**Imbottitura. Schienale.** Crine gommato. **Braccioli.** Crine vegetale modellato a mano. **Cuscino seduta:** in piuma d'oca con inserto in poliuretano espanso.

**Scivoli.** Frassino tinto wenge (32).

**Rivestimento.** In Pelle Frau® o in tessuto:

- ColorSphere® (SC)
- Heritage
- Nest
- Soul
- Cavallino
- Century
- Fabric A
- Fabric B
- C.O.M.

Per verificare i tessuti disponibili si prega di consultare la tabella dedicata "Schema abbinamento prodotti-tessuti".

Ninety years and still going strong. "Modello 904" began production as far back as 1930, known with the name Vanity Fair starting in 1984. The original design seems to have been re-worked by Poltrona Frau starting from the drawings Renzo Frau left his wife Savina. With the passing of the years, Vanity Fair has become one of the universally recognised icons of Italian design, and the emblem of the company. A story that, upon reaching its 90th year, Poltrona Frau has decided to celebrate by launching the Vanity Fair XC. The company asked the designer Roberto Lazzeroni to revisit Vanity Fair, adapting its proportions to the lifestyles of today. The result is a version that is respectful of the original but even more comfortable and welcoming.

### TECHNICAL FEATURES

#### ARMCHAIR

**Supporting structure.** Solid seasoned beech wood.

**Suspension.** Biconical hand-tied steel springs fastened to jute belts.

**Padding. Back.** Rubberised horsehair. **Armrests:** hand-shaped vegetable horsehair. **Seat cushion.** Goose down filled with polyurethane foam insert.

**Supports.** Ash in a wenge stain (32).

**Upholstery.** Pelle Frau® leather or fabric:

- ColorSphere® (SC)
- Heritage
- Nest
- Soul
- Century
- Cavallino
- Fabric A
- Fabric B
- C.O.M.

To verify the available fabrics please consult the dedicated table "Combination models-fabrics pattern".

**Pelle Frau® Cavallino.** La disposizione, il colore e la forma delle “macchie” è assolutamente casuale e, per tale ragione, non è possibile effettuare alcuna selezione su richiesta. Si specifica, inoltre, che il colore delle cosiddette “macchie” non è uniforme e tende a variare dalle tonalità del marrone al nero.

**C.O.M.**

Poltrona: Fabric/Mt. plain 5.50 - Fabric/Mt. repeat 6.10  
Pouf: Fabric/Mt. plain 1.90 - Fabric/Mt. repeat 2.10

**Sfoderabilità.** Non prevista.

**Dettagli estetici.** Una fila di chiodini rivestiti in pelle rifinisce il retro e i fianchi della poltrona.

**Altri dettagli.** Targa in ottone con logo Poltrona Frau disponibile in due finiture:

- dorata
- canna di fucile

**POUF**

**Modelli.**

- pouf
- pouf con vano contenitore

**Struttura.** Multistrato di betulla. Il modello con contenitore presenta una tamponatura interna del vano con fogli di cartone Kraft.

**Imbottitura.** In poliuretano espanso.

**Zoccolo.** In fibra di legno a media densità verniciato nero testurizzato. Lo zoccolo nasconde 4 ruote piroettanti in materiale plastico incassate sul fondo del pouf

**Vano contenitore (ove previsto).** E' rivestito internamente da tessuto tecnico di colore nero. Il meccanismo di apertura è dotato di un sistema che blocca il coperchio in posizione quando aperto e ne ammortizza la chiusura.

**Rivestimento.** In Pelle Frau® o in tessuto:

- ColorSphere® (SC)
- Heritage
- Nest
- Soul
- Century
- Fabric A
- Fabric B
- C.O.M.

Per verificare i tessuti disponibili si prega di consultare la tabella dedicata “Schema abbinamento prodotti-tessuti”.

**Sfoderabilità.** Non prevista.

**Altri dettagli.** Targa in ottone con logo Poltrona Frau disponibile in due finiture:

- dorata
- canna di fucile.

**Pelle Frau® Cavallino.** The arrangement, colour and shape of the “spots” is entirely random and, therefore, no choice can be made. We would also specify that the colour of the above mentioned “spots” is not uniform and tends to vary from brown to black shades.

**C.O.M.**

Armchair: Fabric/Mt. plain 5.50 - Fabric/Mt. repeat 6.10  
Ottoman: Fabric/Mt. plain 1.90 - Fabric/Mt. repeat 2.10

**Removability.** Not possible.

**Aesthetic details.** The external back and sides of the armchair are finished with a row of leather covered tacks.

**Other details.** Brass plate with Poltrona Frau logo available in two finishes:

- gold
- gunmetal grey

**OTTOMAN**

**Models.**

- pouf
- pouf with storage compartment

**Structure.** Birch plywood. In the model with storage space, the internal infill of the compartment consists of sheets of kraftliner.

**Padding.** Polyurethane foam.

**Base.** MDF with texturised black varnish. The base conceals 4 plastic swivel castors which are fitted to the bottom of the pouf

**Storage compartment (where applicable).** Internal lining in black technical fabric. The opening mechanism is equipped with a system that holds the cover in place when it is opened and softens its closure.

**Upholstery.** Pelle Frau® leather or fabric:

- ColorSphere® (SC)
- Heritage
- Nest
- Soul
- Century
- Fabric A
- Fabric B
- C.O.M.

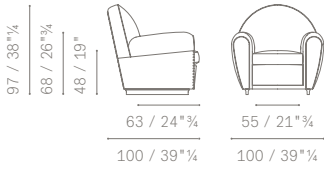
To verify the available fabrics please consult the dedicated table “Combination models-fabrics pattern”.

**Removability.** Not possible.

**Other details.** Brass plate with Poltrona Frau logo available in two finishes:

- gold
- gunmetal grey.

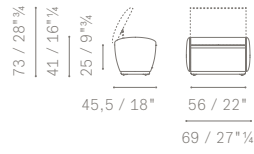
5163115



5163515



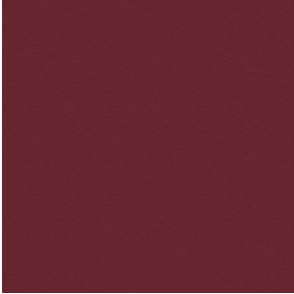
5163515



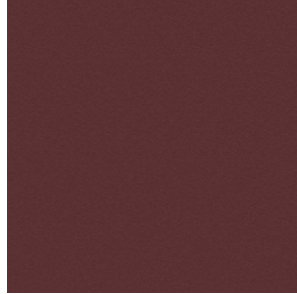
## Upholstery | Pelle Frau® leather:

Rivestimento | In Pelle Frau®:

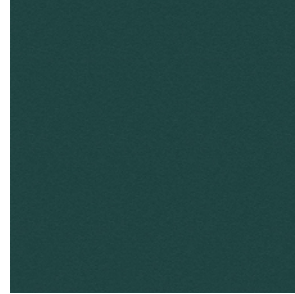
### Pelle Frau® Colorsphere



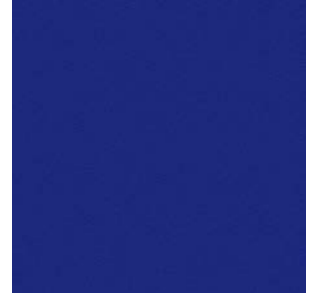
SC 92 Garnet  
SC 92 Granato



SC 93 Paperback  
SC 93 Brossura



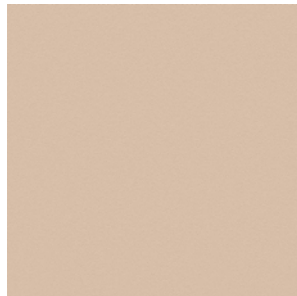
SC 187 Wild  
SC 187 Selva



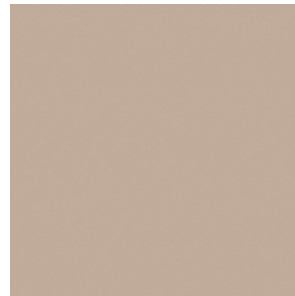
SC 248 Iris  
SC 248 Iris



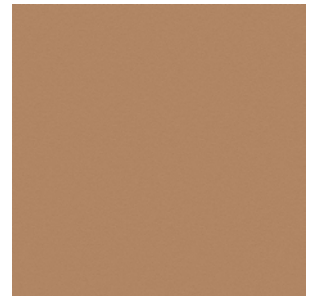
SC 255 Pretty Woman  
SC 255 Belladonna



SC 42 Make-Up  
SC 42 Maquillage



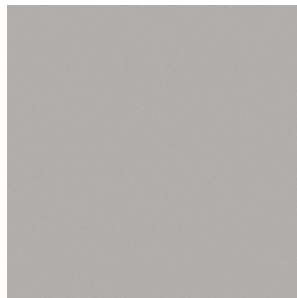
SC 44 Hazelnut  
SC 44 Noisette



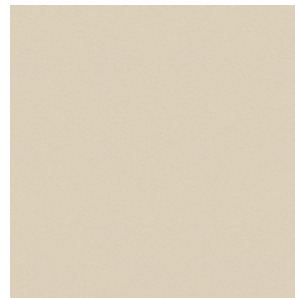
SC 56 Cowhide  
SC 56 Vachette



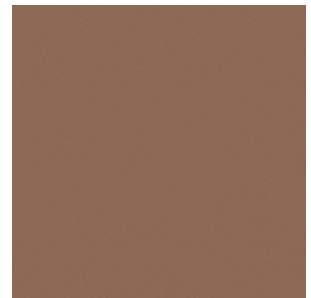
SC 128 Red Carmine  
SC 128 Carminio Rosso



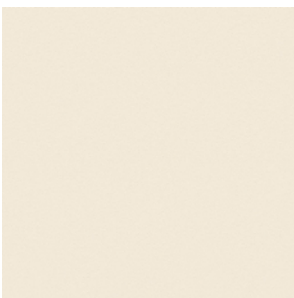
SC 23 Dove  
SC 23 Tortora



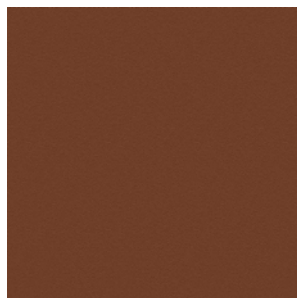
SC 51 Cream  
SC 51 Panna



SC 56 Siena  
SC 56 Siena



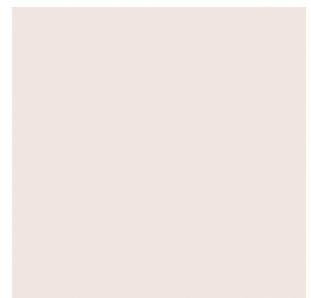
SC 01 Ivory  
SC 01 Avorio



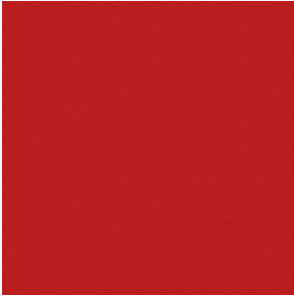
SC 67 Cloves  
SC 67 Chiodi di Garofano



SC 99 Carob  
SC 99 Carrubo



SC 06 Calicot  
SC 06 Calicot



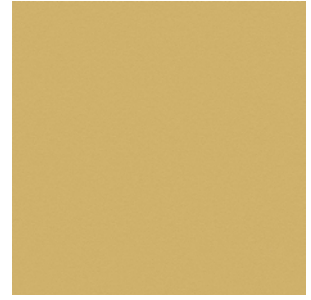
SC 120 Calypso  
SC 120 Calypso



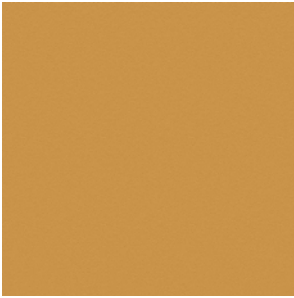
SC 250 Vermillion  
SC 250 Vermillion



SC 274 Fresh Blue  
SC 274 Fresco Blue



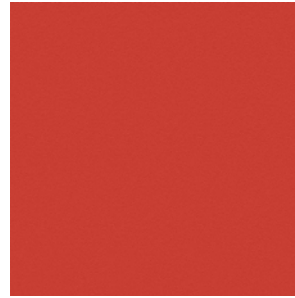
SC 133 Straw  
SC 133 Paglierino



SC 136 Ginger Bread  
SC 133 Pan Di Zenzero



SC 140 Mimosa  
SC 140 Mimosa



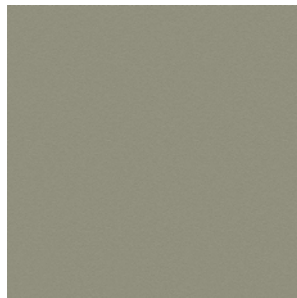
SC 146 Roof Pesto  
SC 146 Coccio Pesto



SC 10 Anthracite  
SC 10 Antracite



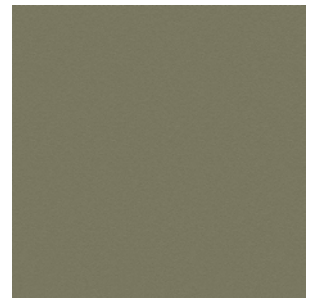
SC 148 Lacquer  
SC 148 Lacca



SC 173 Glaucus  
SC 173 Glauco



SC 175 Bengali Green  
SC 175 Verde Bengali



SC 176 Dock  
SC 176 Darsena



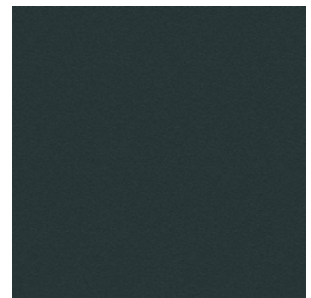
SC 177 Silt  
SC 177 Limo



SC 178 Alps  
SC 178 Alpi



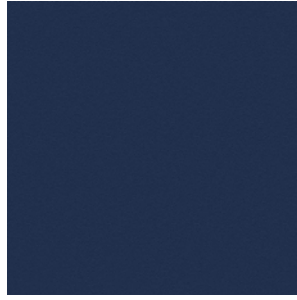
SC 179 Heath  
SC 179 Brughiera



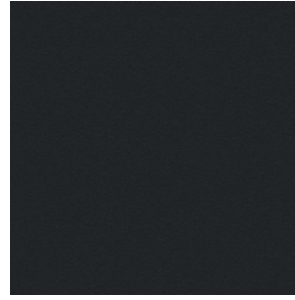
SC 209 Cypress  
SC 209 Cipresso



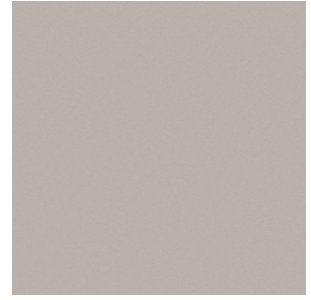
SC 256 Ume  
SC 256 Ume



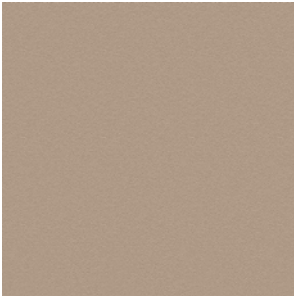
SC 278 Atlantic Blue  
SC 278 Blu Atlantico



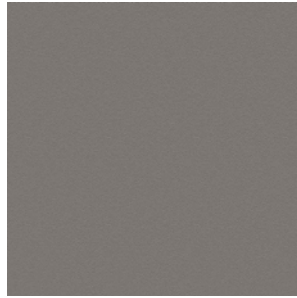
SC 20 Ink  
SC 20 Inchiostro



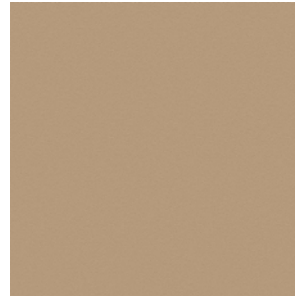
SC 31 Smoky Quartz  
SC 31 Quarzo Fume



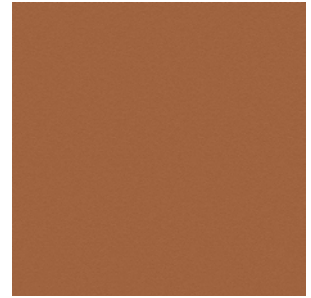
SC 33 Travertine  
SC 33 Travertino



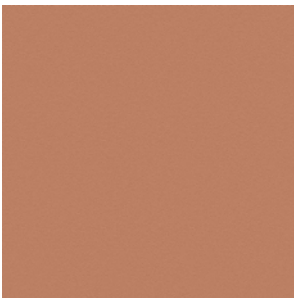
SC 26 Mouse  
SC 26 Topo



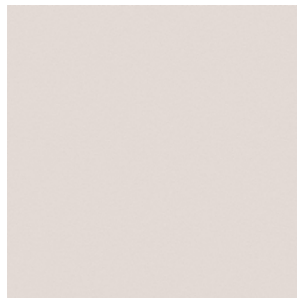
SC 52 Buck  
SC 52 Daino



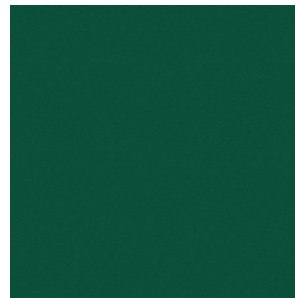
SC 66 India  
SC 66 India



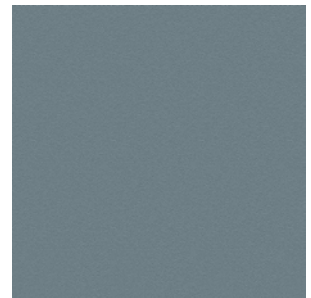
SC 74 Hazelnut  
SC 74 Nocciola



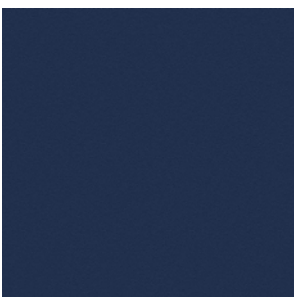
SC 05 Stucco  
SC 05 Stucco



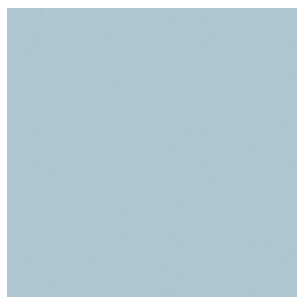
SC 188 Vidrian  
SC 188 Vidriana



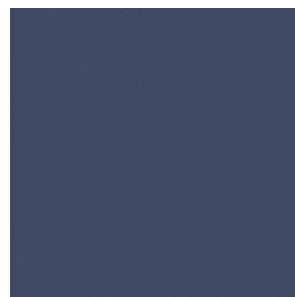
SC 254 Steel Blue  
SC 254 Blu Acciaio



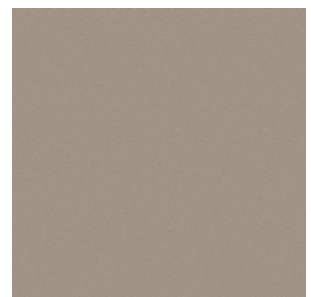
SC 258 Mist  
SC 258 Nebbia



SC 233 Bardiglio  
SC 233 Bardiglio

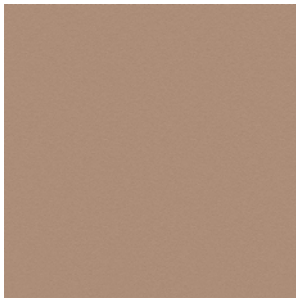


SC 279 Alchemy  
SC 279 Alchimia

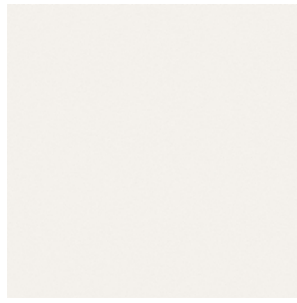


SC 34 Fallow  
SC 34 Maggese





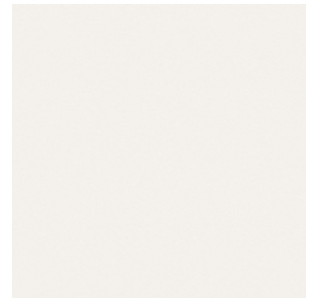
SC 46 Biscuit  
SC 46 Biscotto



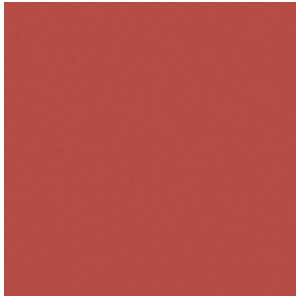
SC 0 Polar  
SC 0 Polare



SC 127 Siam  
SC 127 Siam



SC 28 Seppia  
SC 28 Seppia



SC 96 Brick  
SC 96 Mattone



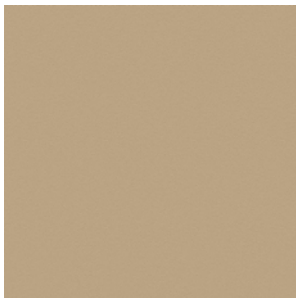
SC 80 Bruno L'avana  
SC 80 Bruno Havana



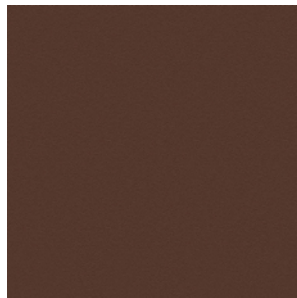
SC 48 Tonka  
SC 48 Tonka



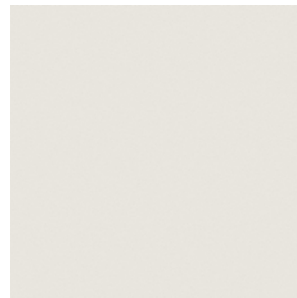
SC 55 Caramel Hair  
SC 55 Capelli Caramello



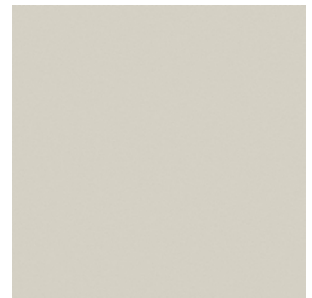
SC 53 Crete  
SC 53 Creta



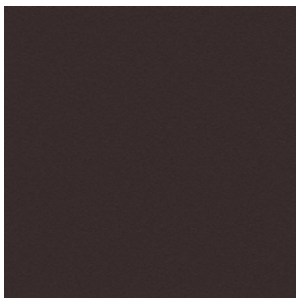
SC 59 Pecan Nut  
SC 59 Noce di Pecan



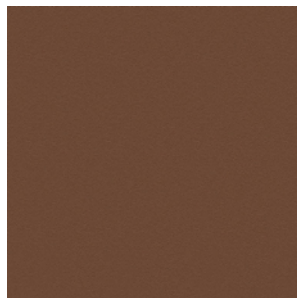
SC 04 White Milk  
SC 04 Latte Bianco



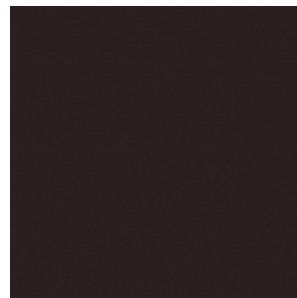
SC 21 Asbestos  
SC 21 Amianto



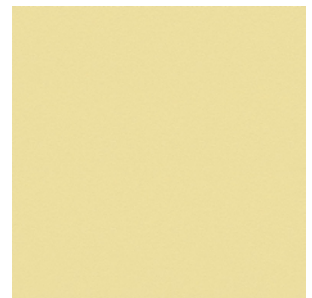
SC 29 Slate  
SC 29 Ardesia



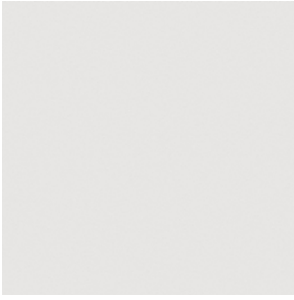
SC 57 Peat  
SC 57 Torba



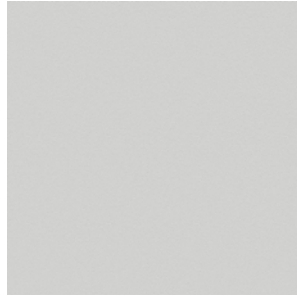
SC 100 Fondant  
SC 100 Fondant



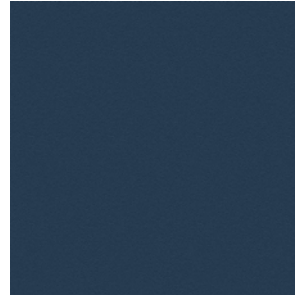
SC 132 Eggshell  
SC 132 Guscio D'uovo



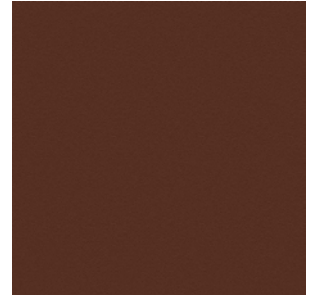
SC 19 Georgette  
SC 19 Georgetta



SC 22 Chiffon  
SC 22 Chiffon



SC 276 Mineral Blue  
SC 276 Blu Minerale



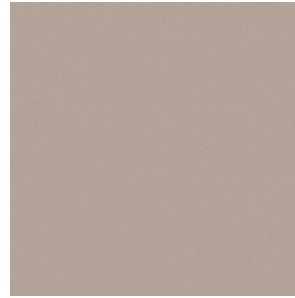
SC 69 Brown Iroko  
SC 69 Iroko Marrone



SC 280 Abyss  
SC 280 Abisso



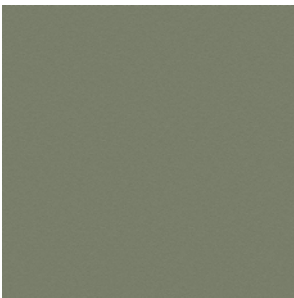
SC 32 Kaolin  
SC 32 Caolino



SC 40 Cachmire  
SC 40 Cachemire



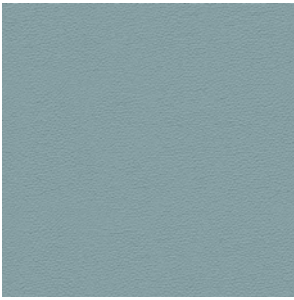
SC 68 Sahara Brown  
SC 68 Sahara Marrone



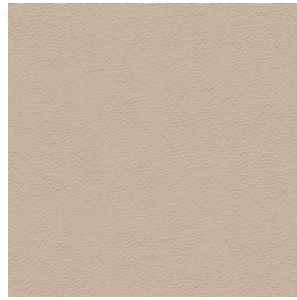
SC 180 Celadon  
SC 180 Celadon



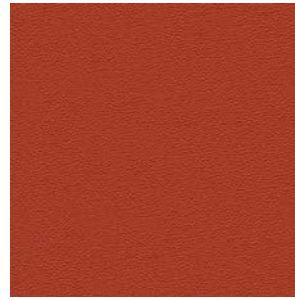
Pelle Frau® Nest



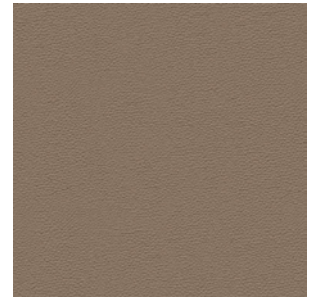
Chalcedony  
Calcedonio



Mother Of Pearl  
Madreperla



Mars  
Marte



Sandstone  
Arenaria



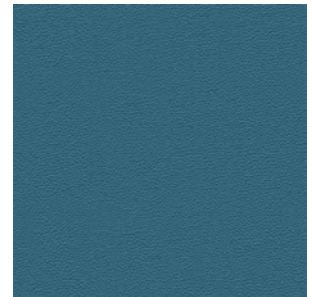
Amber  
Ambra



Concrete  
Cemento



Moon  
Luna



Blue  
Azul



Clay  
Argilla



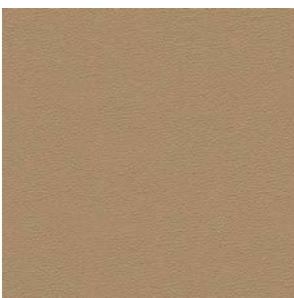
Graphite  
Grafite



Malachite  
Malachite



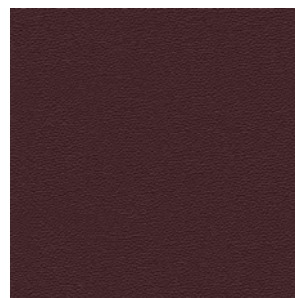
Silica  
Silice



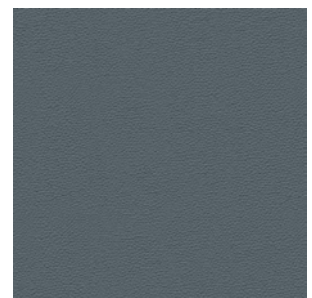
Tuff  
Tufo



Ammonite  
Ammonite

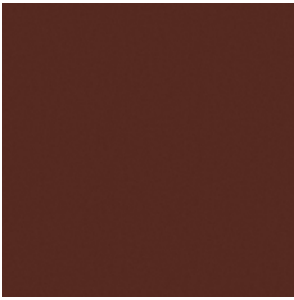


Garnet  
Granato



Larimar  
Larimar

Pelle Frau® Soul



Diana



Joe



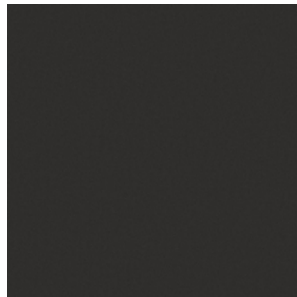
Amy



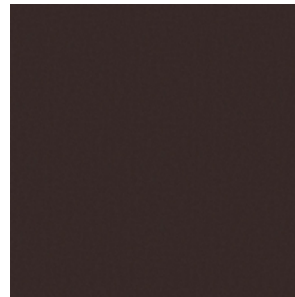
Whitney



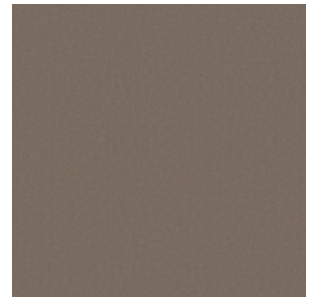
Nina



Otis



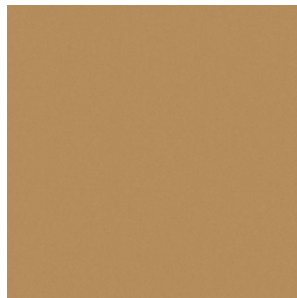
Ray



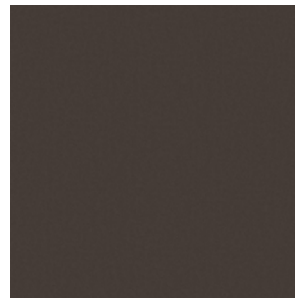
Smokey



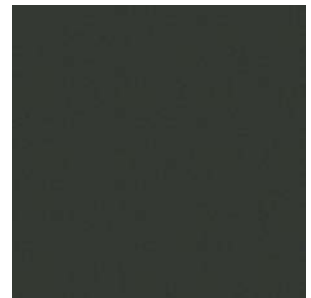
Wilson



Anita

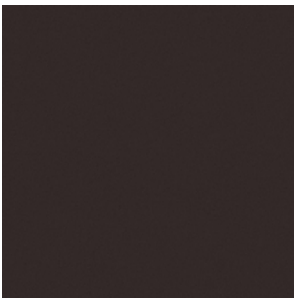
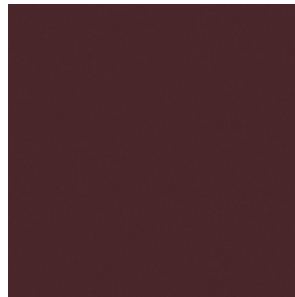
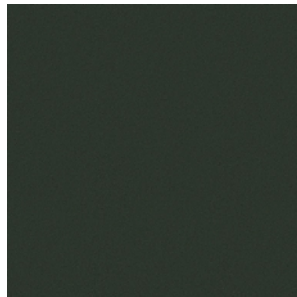
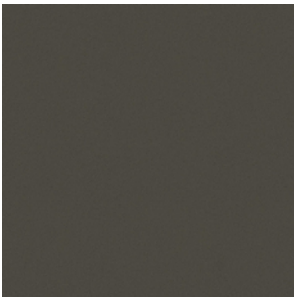
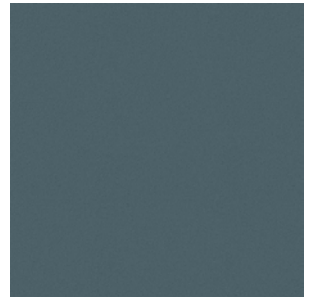
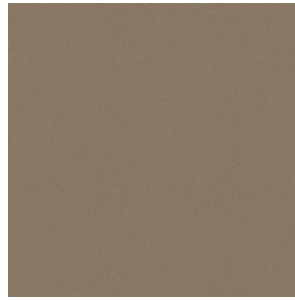
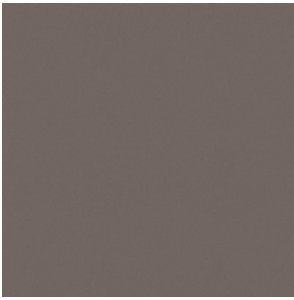


Dusty



Stevie

Pelle Frau® Century



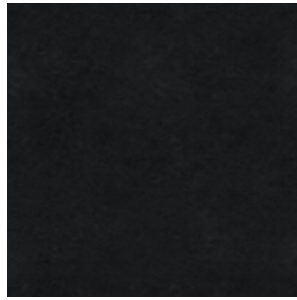
Pelle Frau® Cavallino



Pelle Frau® Heritage



Acorn  
Ghianda



Black  
Nero



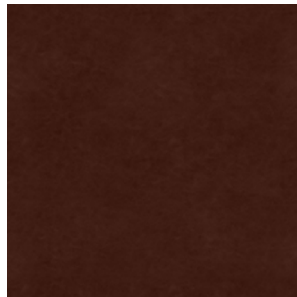
Mahagony  
Mahagoni



Brown  
Testa di Moro



Bordeaux  
Bordeaux



Chestnut  
Castagno

**Upholstery | Fabric:**  
Rivestimento | Tessuto:

Fabric A: Giano



9 Light  
9 Chiaro



7 Dark  
7 Scuro



9 Dark  
9 Scuro



3 Light  
3 Chiaro



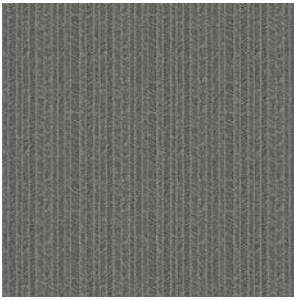
7 Light  
7 Chiaro



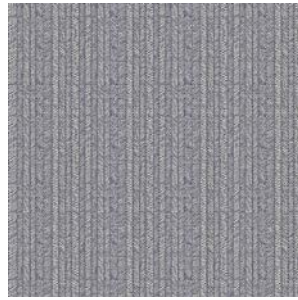
3 Dark  
3 Scuro



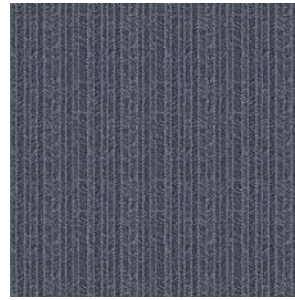
Fabric A: Nouveau



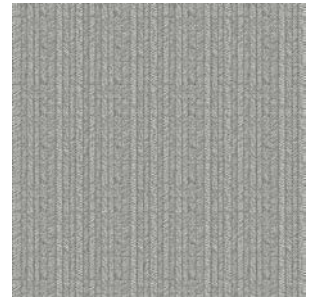
10 Dark  
10 Scuro



13 Light  
13 Chiaro



13 Dark  
13 Scuro



10 Light  
10 Chiaro

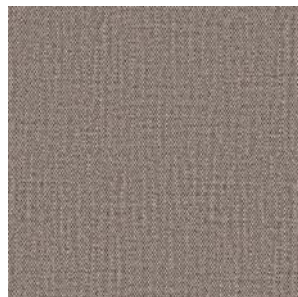


03

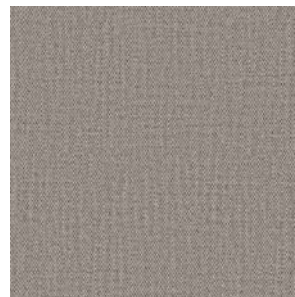
Fabric A: Paltò



White 01  
Bianco 01

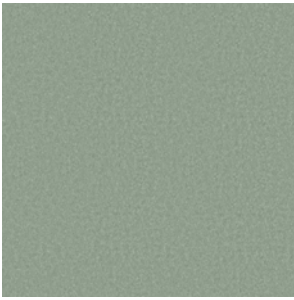


Moor's head 10  
Testa di Moro 10



Mouse 13  
Topo 13

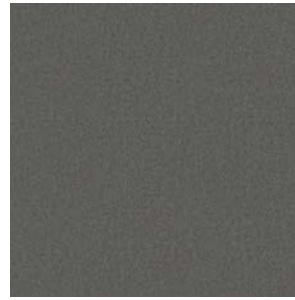
Fabric B: Barkley



Lichen  
Lichene



Moor's Head  
Testa di Moro



Mouse  
Topo



Avio  
Avio

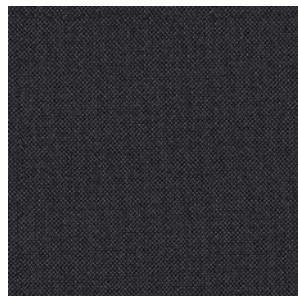


Pearl  
Perla

Fabric B: Bouclè



104



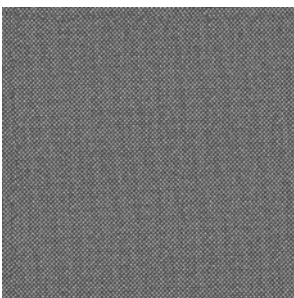
103



105



101



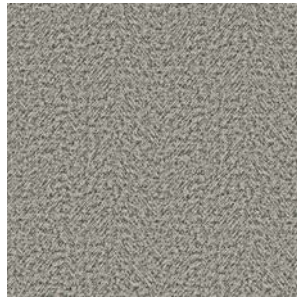
102



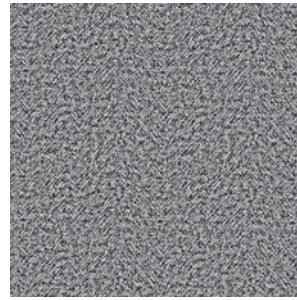
Fabric B: Scottish



20

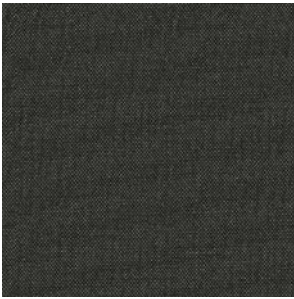


33



31

Fabric B: Shine



Forest  
Foresta



Silver  
Argento



Starry blue  
Blu stellato

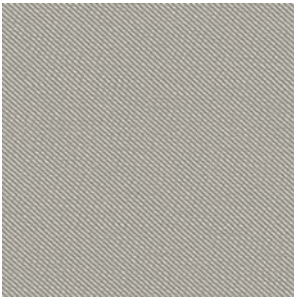


Beige  
Beige



Black iris  
Iris nero

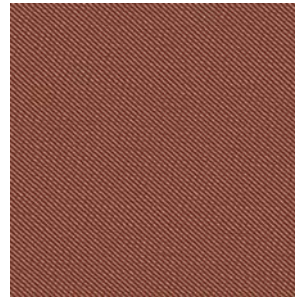
Fabric B: Twill



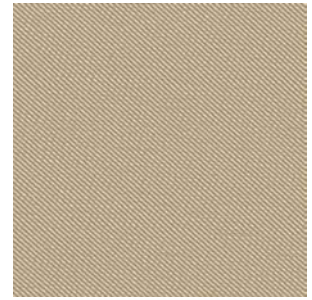
018 Gray  
018 Grigio



109 Ash  
109 Cenere



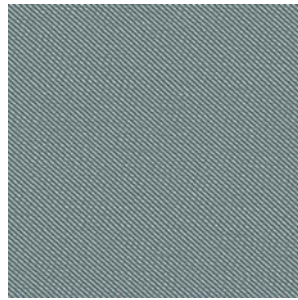
102 Rust  
102 Ruggine



114 Beige  
114 Beige



004 Cotto  
004 Cooked

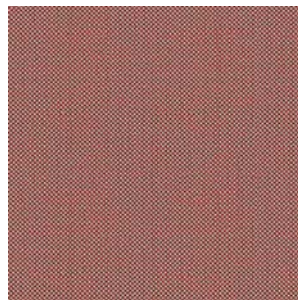


006 Water  
006 Acqua

Fabric B: Damie



429.090



429.058



429.110



429.011



429.031



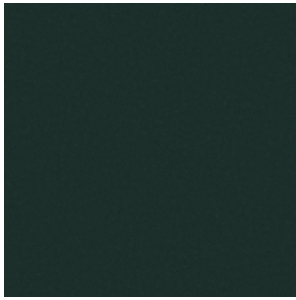
429.032



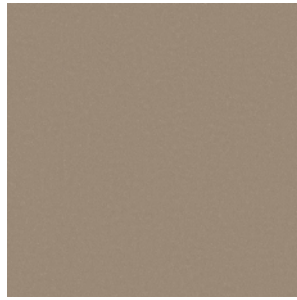
429.052



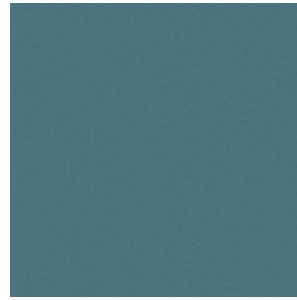
Fabric B: Vega



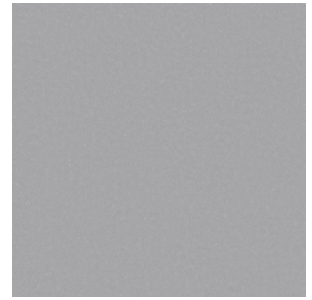
303



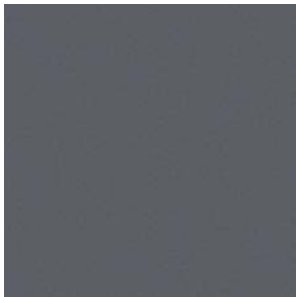
103



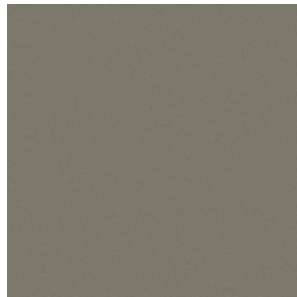
126



129



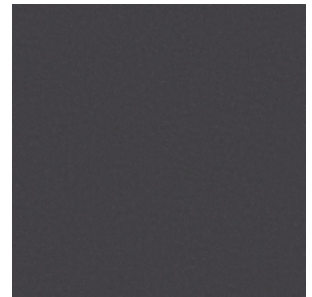
133



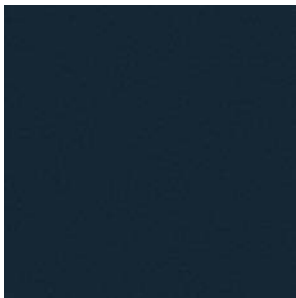
300



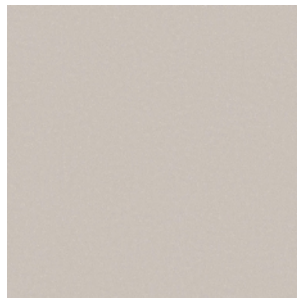
302



135



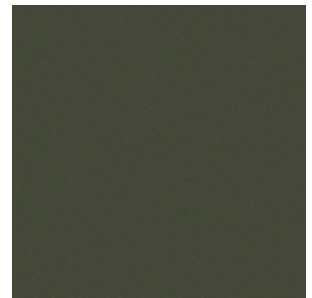
137



144

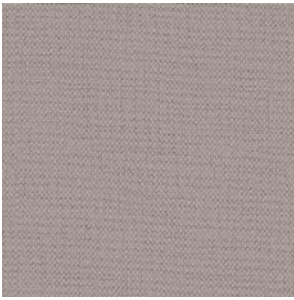


139

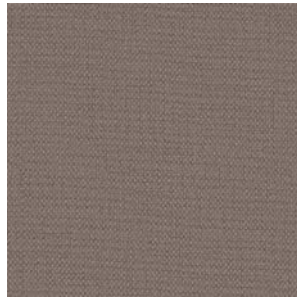


301

Fabric B: Guatemala



Grey  
Grigio



Cork  
Sughero



Beaver  
Castoro



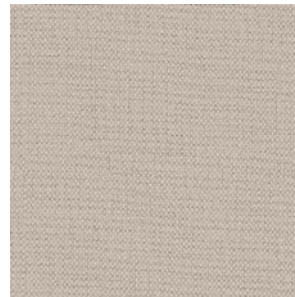
Board  
Lavagna



Lead  
Piombo



White  
Bianco

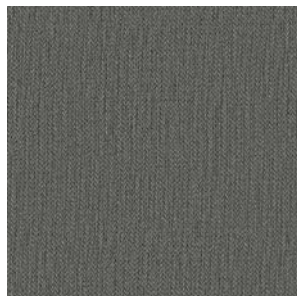


Ecu  
Ecu

Fabric B: Milano



05



10

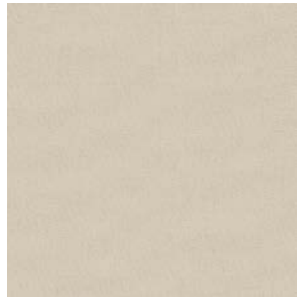


03

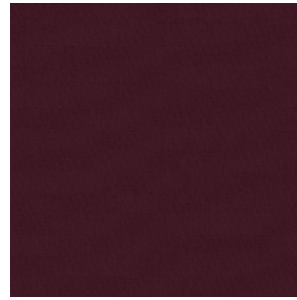
Fabric B: Hermoso



24



01



05



07



08



09



10

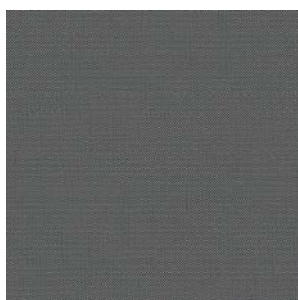


11



17

Fabric B: Penelope



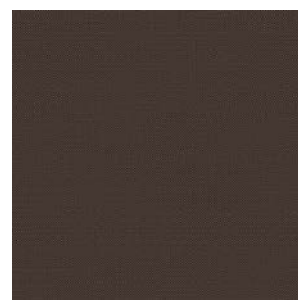
1722



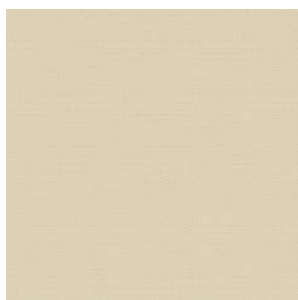
1724



1760



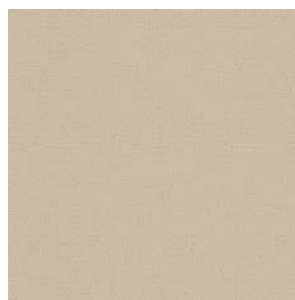
1762



1700



1779



1705



1710

Fabric C.O.M.

Fabric/Mt. plain 0.60 Fabric/Mt. repeat 0.70

Fabric/Mt. plain 0.60 Fabric/Mt. repeat 0.70

To verify the available fabrics please consult the dedicated table "Combination models-fabrics pattern".

Per verificare i tessuti disponibili si prega di consultare la tabella dedicata "Schema abbinamento prodotti-tessuti".