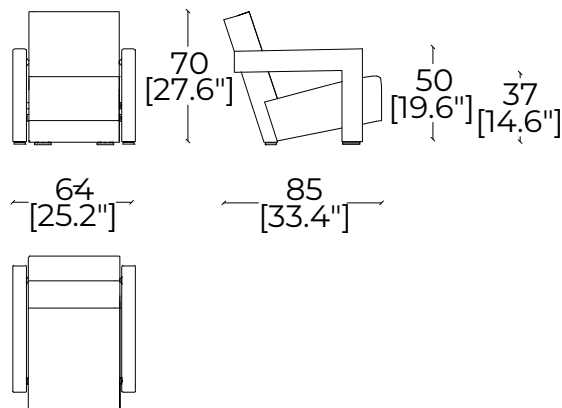


Utrecht Baby

Armchair - Poltrona
Design - Gerrit T. Rietveld
1935



637 01/02



Structure | Struttura

Loadbearing seat and backrest frame in tubular steel with elastic webbing.
Telaio portante sedile e schienale in tubolare di acciaio dotato di cinghie elastiche.

Padding | Imbottitura

Polyurethane foam and polyester batting.
Poliuretano espanso e ovatta di poliestere.

Stitching | Imbottitura

Blanket stitch or zig zag.
Punta di cavallo o a zig zag.

Upholstery* | Rivestimento

**Once you've chosen your fabric, please contact our Customer Care Team so we can verify the availability of your selection.
Una volta scelto il rivestimento, contatta il customer service per verificare che sia disponibile

Fabrics

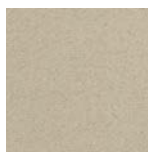
Tessuti

Cat. E:

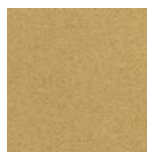
L - Lincoln | Composition: 100% Wool
Composizione: 100% Lana



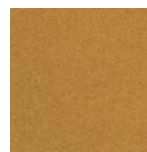
13L570
Ivory
Avorio



13L571
Ash
Cenere



13L572
Sand
Sabbia



13L573
Tobacco
Tobacco



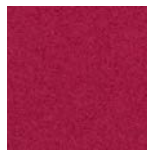
13L574
Saffron
Zafferano



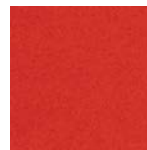
13L575
Rust
Ruggine



13L576
Wine
Vinaccia



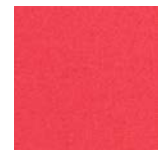
13L577
Geranium
Geraneo



13L578
Raspberry
Lampone



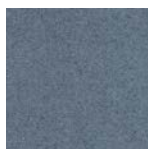
13L579
Tomato
Pomodoro



13L580
Fuxia
Fuxia



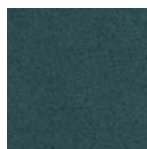
13L581
Cement
Cemento



13L582
Stone
Pietra



13L583
Oil
Petrolio



13L584
Olive
Oliva



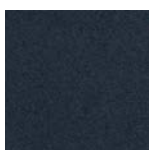
13L585
Cobalt Blue
Blu Cobalto



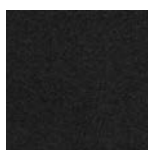
13L586
Violet Blue
Blu Violet



13L587
Night Blue
Blu Notte



13L588
Anthracite
Antracite



13L589
Black
Nero