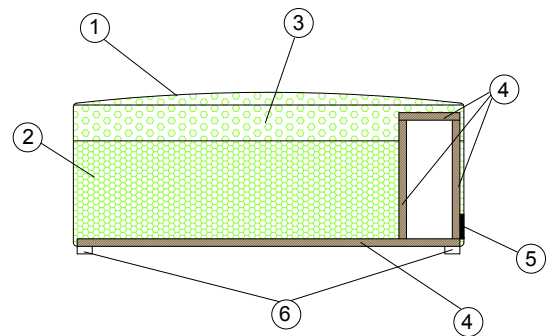


# SIR-PENT

DESIGN ANDREA STRAMIGIOLI

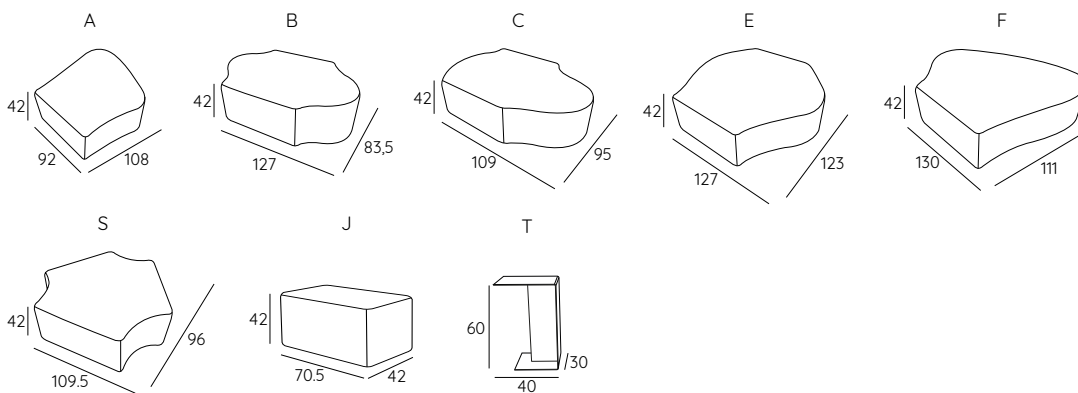


Sir-Pent is a curious being that lives on Planet Earth with the intention of creating islands of relaxation with linear or compound shapes, winding lightly and discreetly in places where its fluidity and its quiet presence unfussingly claim their own essentiality. In the free and sinuous unfolding of its soft and discrete shapes, Sir-Pent surprises and charms with the technological accessories that emerge from the softness of the seating surfaces: USB or Schuko charging outlets, hidden wireless charging devices, magazine racks or tablet holders and a technological plant connected to ItAir, a patented air purification system. Sir-Pent fits into the rotational motions of our planet as a safe landing point, attracting hurried passers-by with a gravitational action similar to that the Sun and the Moon exert on Planet Earth.



- 1 - dacron® fiber 100 gr;
- 2 - high resilience polyurethane foam of different densities;
- 3 - high resilience polyurethane memory foam;
- 4 - structural frame in plywood;
- 5 - high attraction magnets;
- 6 - wooden feet.

## DIMENSIONS:



**adrenajina**  
WE ARE DIFFERENT!

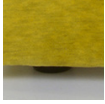
<https://adrenajina.it/sir-pent/>

# SIR-PENT

DESIGN ANDREA STRAMIGIOLI

## FEET:

h 2



## J ELEMENT:



### J SMART

Equipped with smart vase.  
Usb, wireless, schuko sockets not included.



### J RACK

Equipped with magazines rack. Usb, wireless, schuko sockets not included.



### J VIDEO

Equipped with tablet/  
screen holder. Usb, wireless,  
Schuko sockets not included.

## T ELEMENT:



### TABLE T

Painted sheet metal  
side table with fabric  
insert.

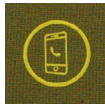
## DEVICES:

### USB



Two USB socket.  
Power supply 230 V.  
Different voltage upon  
request.

### WIRELESS



Wireless smartphone charger.  
Power supply 230 V.  
Different voltage upon  
request.

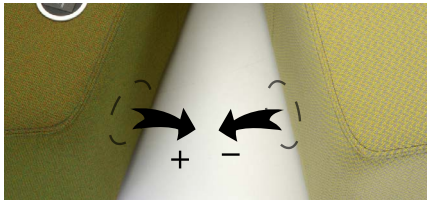
### SCHUKO



Schuko socket.  
Power supply 230 V.  
UK and USA plug on  
demand.

## CLEANING FRIENDLY CONNECTORS:

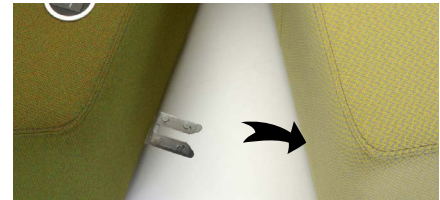
### HIDDEN MAGNETIC CONNECTORS



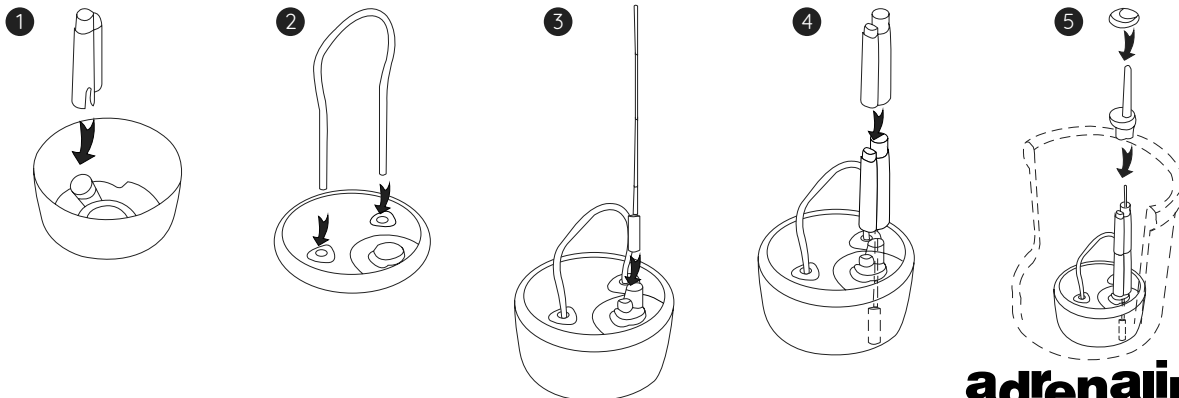
Cleaning friendly magnetic connectors  
with hidden magnets inside of the  
elements, particularly suitable to  
facilitate the movement of the elements  
during the cleaning of the environment.

On demand: traditional steel connectors

### TRADITIONAL CONNECTION



## SMART VASE:

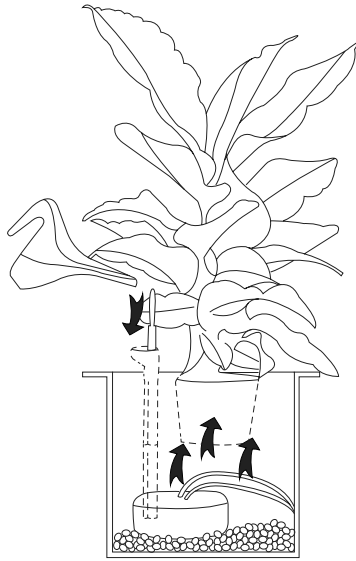


**adrenalina**  
WE ARE DIFFERENT!

<https://adrenalina.it/sir-pent/>

# SIR-PENT

DESIGN ANDREA STRAMIGIOLI



Itair® is an innovative natural air purifier for indoors. In this system, the plant stops being just ornamental and becomes the key figure as its purifying properties get amplified thanks to a technological core. The plant becomes a real filter, thanks to microorganisms in its roots, it can actively metabolize toxic agents that are present in the air, for example the VOC (Volatile Organic Compounds). Thanks to a forced mechanical ventilation, the system increases the air flux in the roots of the plant and it increases its effectiveness exponentially. Itair® connects to Wi-Fi and it can be managed with a proprietary app that works with smartphones and tablets. Thanks to the app, consumers will have a real-time experience:

- Real-time analysis of the pollutants in indoors spaces
- Temperature and Humidity monitor
- Analytics

Itair® has been tested thanks to specific laboratory exams which have proved its effectiveness.

Scientific validation has been given by the combined work of LINV, International Laboratory for Plant Neurobiology ([www.linv.org](http://www.linv.org)) and PNAT, spin-off of the University of Florence ([www.pnat.net](http://www.pnat.net)), these are probably two of the most notable laboratories on plants in the world, which have also collaborated.

## SUGGESTED PLANTS

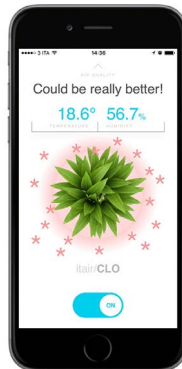
- Sansevieria Trifasciata – Variagated Snake Plant
- Spathiphyllum “Mauna Loa” – Peace Lily
- Anthurium Andraeanum – Flamingo Lily
- Aglaonema Modestum – Chinese Evergreen
- Nephrolepis exaltata – Boston Fern
- Nephrolepis oblitterata – Kimberley Queen Fern
- Aloe Vera
- Ficus benjamina – Weeping Fig
- Dracaena Marginata – Red-Edged Dracaena
- Epipremnum aureum – Devil’s Ivy - Liriope spicata – Lilyturf

- Liriope spicata – Lilyturf
- Hedera helix – English Ivy
- Dracaena fragrans “Massangeana” – Cornstalk Dracaena
- Gerbera Jamesonii – Barberton Daisy
- Rhaps excelsa – Broadleaf Lady Palm
- Chlorophytum comosum – Spider Plant
- Phoenix robelenii – Dwarf Date Palm
- Chamaedorea seifrizii – Bamboo Palm
- Philodendrum Cordatum – Heartleaf Philodendron
- Dieffenbachia – Dumb Cane
- Ficus elastica – Rubber Plant

## ITAIR APP:



1. Download the SMART AIR PURIFIER app for free from Google play or Apple store;
2. Once you have connected the plant to the power supply, connect it to the WiFi of the Smartphone or tablet you want to use. Search ITAIR AP from the Available Networks list, enter Password “0987654321” and confirm;
3. Once the connection has been established, open the SMART AIR PURIFIER app, click on the blue Itair bar and the plant will be connected;
4. At the bottom of the screen you will find the ON-OFF slider to turn the device on and off, while on the upper part you will find the data relating to the values perceived by the air quality, temperature and humidity sensors;
5. Swiping the screen from left to right, you will open



a menu on the left and find the following items:

- HOME
- TIMERS to schedule the automatic activation and shutdown of the plant at set times.
- WIFI where you can rename your plant, and you can connect it to your home or business WiFi network.
- DEVICES where you will find the list of devices connected to the application in case there are several ITAIR units connected;
- BIBLIOGRAPHY where you can find the list of suitable plants for ITAIR and select your own;
- 6. From the WIFI function, connect the plant to your home or business WiFi network.

## TECNICAL DETAILS:

Removable cover: NO	kg	m <sup>3</sup>	mts
SIR-PENT A ELEMENT	23	0.42	3.50
SIR-PENT B ELEMENT	26	0.44	4.00
SIR-PENT C ELEMENT	33	0.43	5.50
SIR-PENT E ELEMENT	40	0.66	6.00
SIR-PENT F ELEMENT	31	0.61	5.50
SIR-PENT S ELEMENT	23	0.44	5.00
SIR-PENT J ELEMENT	17	0.12	2.30
SIR-PENT T ELEMENT	17	0.07	1.50

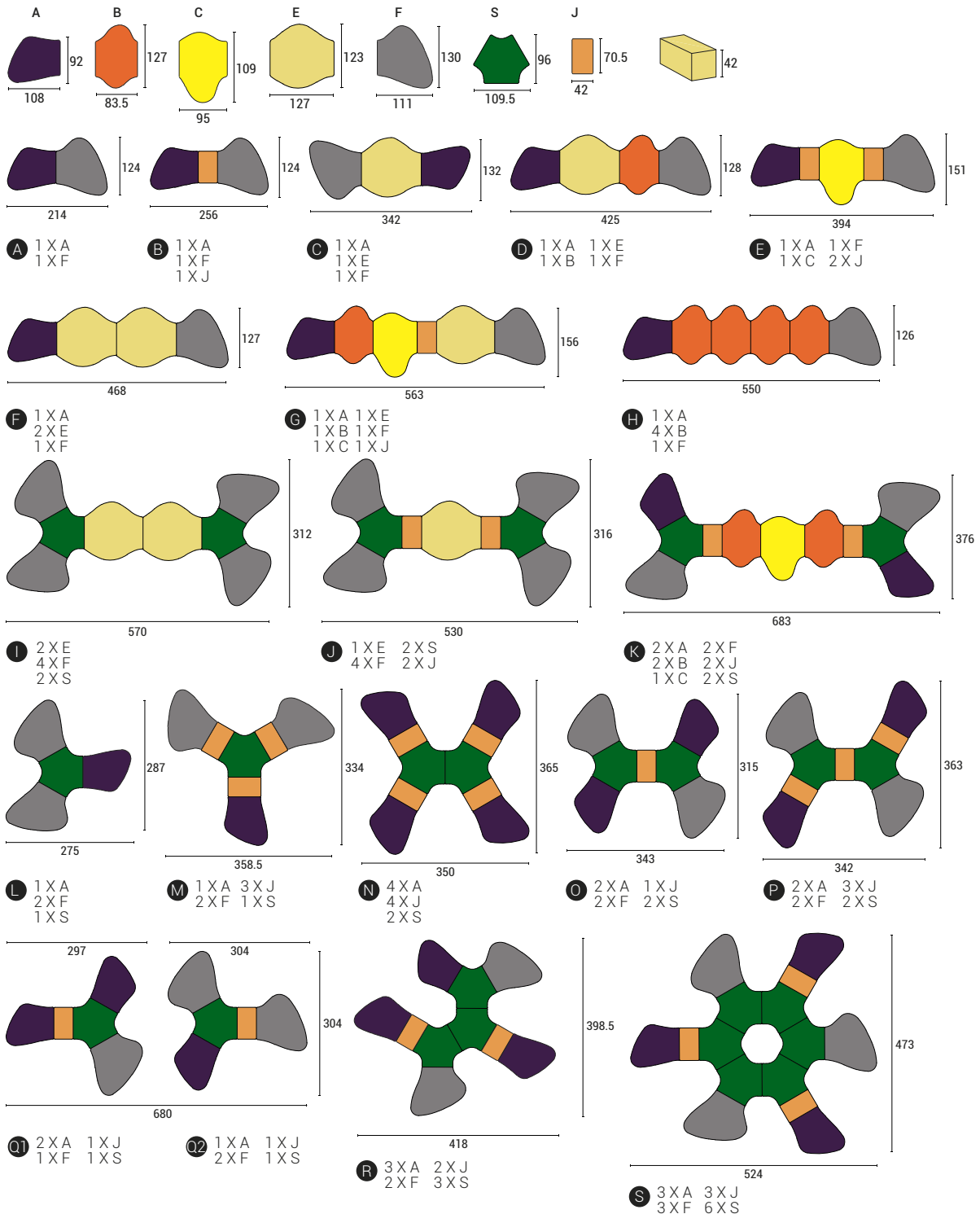
<https://adrenalina.it/sir-pent/>

**adrenalina**  
WE ARE DIFFERENT!

# SIR-PENT

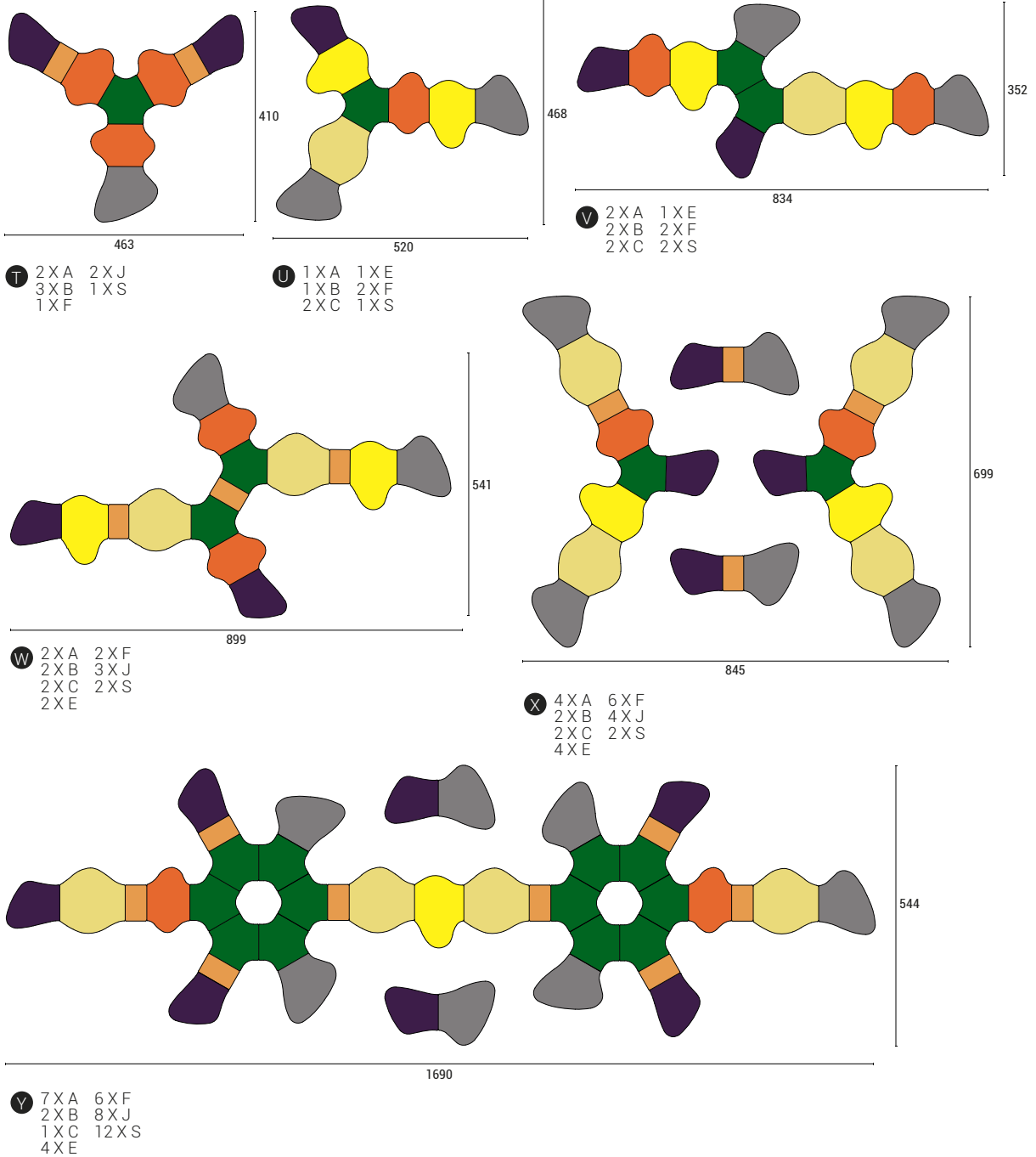
DESIGN ANDREA STRAMIGIOLI

## SUGGESTED CONFIGURATIONS:



# SIR-PENT

DESIGN ANDREA STRAMIGIOLI





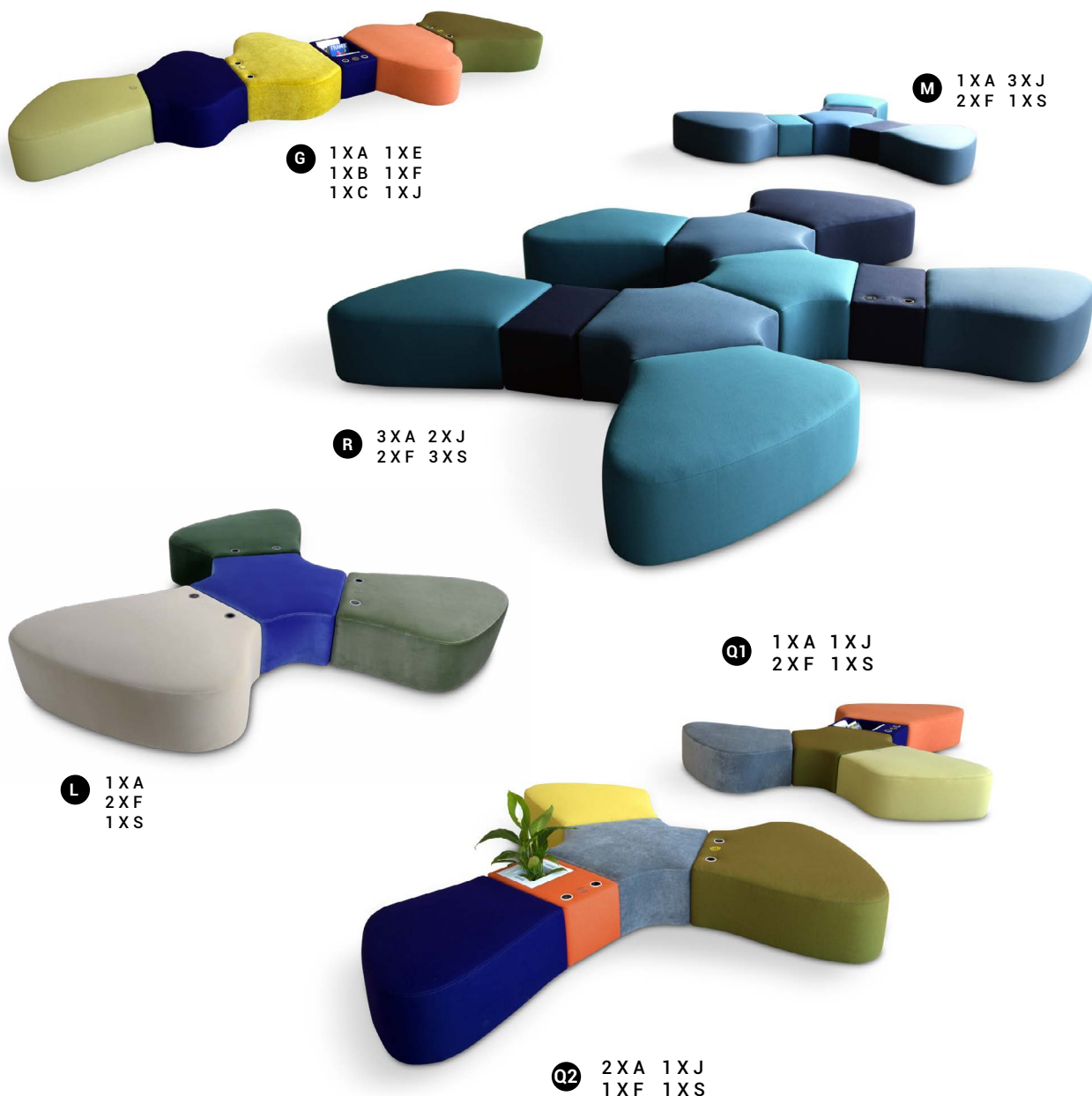
# SIR-PENT

DESIGN ANDREA STRAMIGIOLI

## SUGGESTED FABRICS:



## PHOTO GALLERY:



<https://adrenajina.it/sir-pent/>

**adrenajina**  
WE ARE DIFFERENT!

DESIGN ANDREA STRAMIGIOLI

# SIR-PENT



**P** 2XA 3XJ  
2XF 2XS



**K** 2XA 2XS  
2XB 2XF  
1XC 2XJ

<https://adrenajina.it/sir-pent/>

**adrenajina**  
WE ARE DIFFERENT!

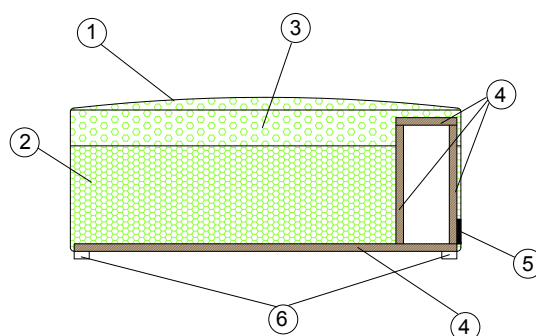
# SIR-PENT

DESIGN ANDREA STRAMIGIOLI

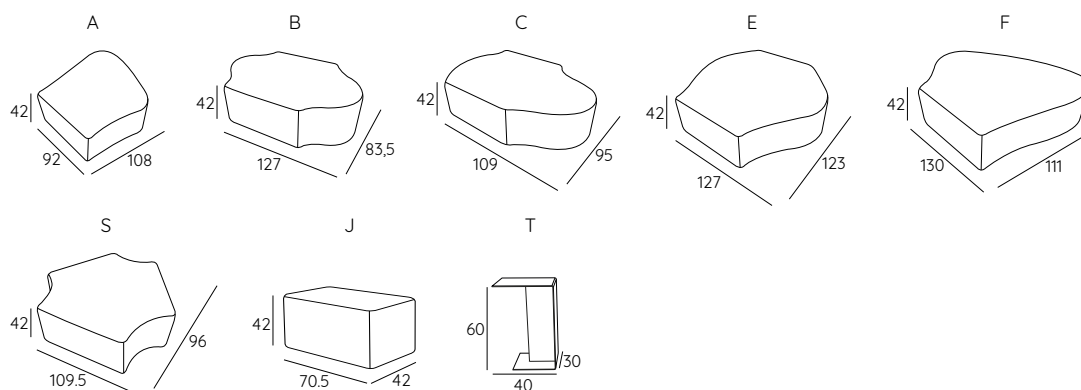


Sinuoso e silenzioso Sir-Pent si allunga e si riduce, si snoda e si dirama: nulla è un ostacolo per Sir-Pent che, partendo da un set base di cinque moduli e un elemento jolly che fluidifica gli snodi, offre infinite possibilità di creare forme lineari, composte o articolate, in un gioco divertente e stimolante; Sir-Pent si adatta agli ambienti con flessibilità e si estende nello spazio silenziosamente, senza invaderlo. Sir-Pent è anche sorpresa e stupore per gli accessori che nasconde tra le sue curve: punti di ricarica cellulare o ricarica wi-fi a scomparsa e una pianta eco-tecnologica con controllo a distanza che purifica l'aria in base alle esigenze dell'ambiente.

- 1 - fibra di dacron® 100 gr;
- 2 - poliuretano espanso indeformabile di diverse densità;
- 3 - poliuretano espanso indeformabile in memory foam;
- 4 - telaio in multistrato di legno;
- 5 - calamite ad alta trazione;
- 6 - piedi in legno.



## DIMENSIONI:



<https://adrenalina.it/sir-pent/>

**adrenalina**  
WE ARE DIFFERENT!



# SIR-PENT

DESIGN ANDREA STRAMIGIOLI

## PIEDI:

h 2



## MODULO J:



### J SMART

Attrezzato con pianta smart.  
Usb, caricatore wireless e schuko sono optional.



### J RACK

Attrezzato con portariviste.  
Usb, caricatore wireless e schuko sono optional.



### J VIDEO

Attrezzato con porta tablet/  
video. Usb, caricatore  
wireless e schuko sono optional.

## MODULO T:



### TAVOLO T

Tavolino in lamiera  
verniciata con inserto  
in tessuto.

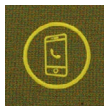
## DEVICES:

### USB



Alimentazione 230 V.  
Due prese USB  
Voltaggio differente  
su richiesta.

### WIRELESS



Caricatore smartphone  
senza fili.  
Trasformatore alimentato  
a 230 V.

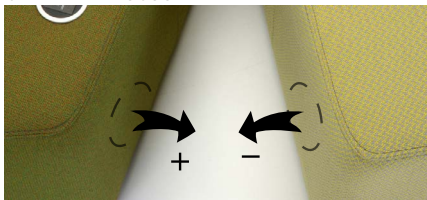
### SCHUKO



Presse elettrica schuko.  
Alimentazione 230 V. Presse  
elettrica UK  
e USA su richiesta.

## SISTEMA DI AGGANCIO RAPIDO:

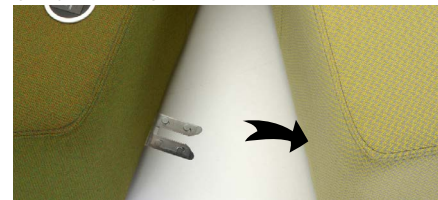
### CALAMITE NASCOSTE



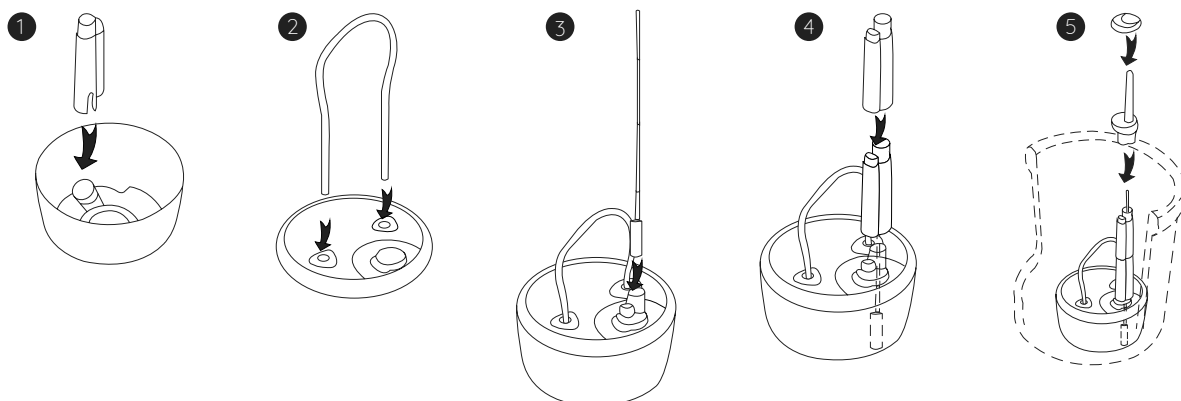
Sistema di aggancio con calamite nascoste nel lato interno degli elementi, particolarmente adatte per favorire lo spostamento degli elementi durante la pulizia dell'ambiente.

Su richiesta: sistema di aggancio tradizionale

### GANCI TRADIZIONALI



## PIANTA SMART:

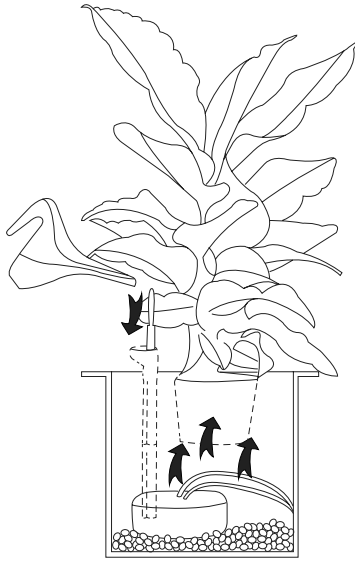


<https://adrenalina.it/sir-pent/>

**adrenalina**  
WE ARE DIFFERENT!

# SIR-PENT

DESIGN ANDREA STRAMIGIOLI



Itair®, un innovativo sistema tecnologico di purificazione naturale dell'aria per ambienti indoor, che agisce attraverso una pianta decorativa, che assume funzione di oggetto di servizio, amplificando le sue naturali proprietà di purificazione grazie alla presenza di un cuore tecnologico. La pianta del sistema itair® diventa un vero filtro, grazie alla presenza di microorganismi nell'apparato radicale è capace di metabolizzare gli agenti nocivi presenti nell'aria. Un vaso smart, capace di connettersi attraverso Wi-Fi ai comuni devices, (smartphone, tablet, etc), e gestibile attraverso un applicativo mobile permette di:

- controllare la presenza di agenti inquinanti nell'aria che si sta respirando;
- gestire l'accensione e lo spegnimento a seconda del livello di inquinanti rilevati;
- monitorare il livello di temperatura e umidità, parametri fondamentali al fine di garantire un buon comfort ambientale.

Il sistema itair®, è stato sottoposto a specifici test che hanno provato il suo effettivo funzionamento. La validazione scientifica è stata condotta dal LINV, International Laboratory for Plant Neurobiology ([www.linv.org](http://www.linv.org)), e PNAT, spin-off dell' Università di Firenze ([www.pnat.net](http://www.pnat.net)), due centri d'eccellenza mondiale nello studio dei sistemi naturali e delle piante, che vantano collaborazioni con L'ESA (European Space Agency).

## PIANTE CONSIGLIATE

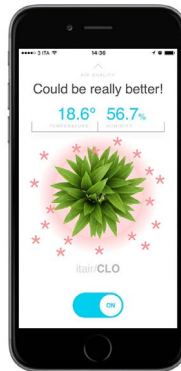
- Sansevieria Trifasciata – Variagated Snake Plant
- Spathiphyllum “Mauna Loa” – Peace Lily
- Anthurium Andraeanum – Flamingo Lily
- Aglaonema Modestum – Chinese Evergreen
- Nephrolepis exaltata – Boston Fern
- Nephrolepis oblitterata – Kimberley Queen Fern
- Aloe Vera
- Ficus benjamina – Weeping Fig
- Dracaena Marginata – Red-Edged Dracaena
- Epipremnum aureum – Devil's Ivy

- Liriope spicata – Lilyturf
- Hedera helix – English Ivy
- Dracaena fragrans “Massangeana” – Cornstalk Dracaena
- Gerbera Jamesonii – Barberton Daisy
- Rhaps excelsa – Broadleaf Lady Palm
- Chlorophytum comosum – Spider Plant
- Phoenix robelenii – Dwarf Date Palm
- Chamaedorea seifrizii – Bamboo Palm
- Philodendrum Cordatum – Heartleaf Philodendron
- Dieffenbachia – Dumb Cane
- Ficus elastica – Rubber Plant

## ITAIR APP:



1. Scaricare l'app “SMART AIR PURIFIER” grato da Google play o Apple store;
2. Collegata la pianta all'alimentazione, collegarla al wifi del dispositivo Smartphone o tablet che si desidera utilizzare. Ricercare dall'elenco Reti disponibili, “ITAIR AP”, inserire Password “0987654321” e confermare;
3. Effettuato il collegamento, aprire la app SMART AIR PURIFIER, cliccare sulla barra blue “Itair” e la pianta sarà collegata;
4. Sulla parte bassa dello schermo troveremo cursore a scorrimento ON – OFF per azionare e spegnere il dispositivo, mentre sulla parte alta troviamo i dati relativi ai valori percepiti dai sensori di qualità dell'aria, temperatura e umidità;



5. Scorrendo con il dito dal lato sinistro a quello destro dello schermo apriremo sulla sinistra un menu troviamo le seguenti voci:
  - HOME
  - TIMERS per impostare l'attivazione e lo spegnimenti automatico della pianta in base agli orari preferiti.
  - WIFI dove è possibile Rinominare la vostra pianta, ed è possibile collegarla alla vostra rete wifi di casa o azienda.
  - DEVICES troverete l'elenco dei dispositivi collegati all'applicazione nel caso vi siano più ITAIR collegati.
  - BIBLIOGRAPHY dove è possibile trovare l'elenco di piante idonee per ITAIR e selezionare la propria;
6. Dalla funzione WIFI collegare la pianta alla rete wifi di casa o dell'azienda.

## INFORMAZIONI TECNICHE:

Sfoderabile: NO	kg	m <sup>3</sup>	mts
SIR-PENT MODULO A	23	0.42	3.50
SIR-PENT MODULO B	26	0.44	4.00
SIR-PENT MODULO C	33	0.43	5.50
SIR-PENT MODULO E	40	0.66	6.00
SIR-PENT MODULO F	31	0.61	5.50
SIR-PENT MODULO S	23	0.44	5.00
SIR-PENT MODULO J	17	0.12	2.30
SIR-PENT MODULO T	/	0.07	1.50

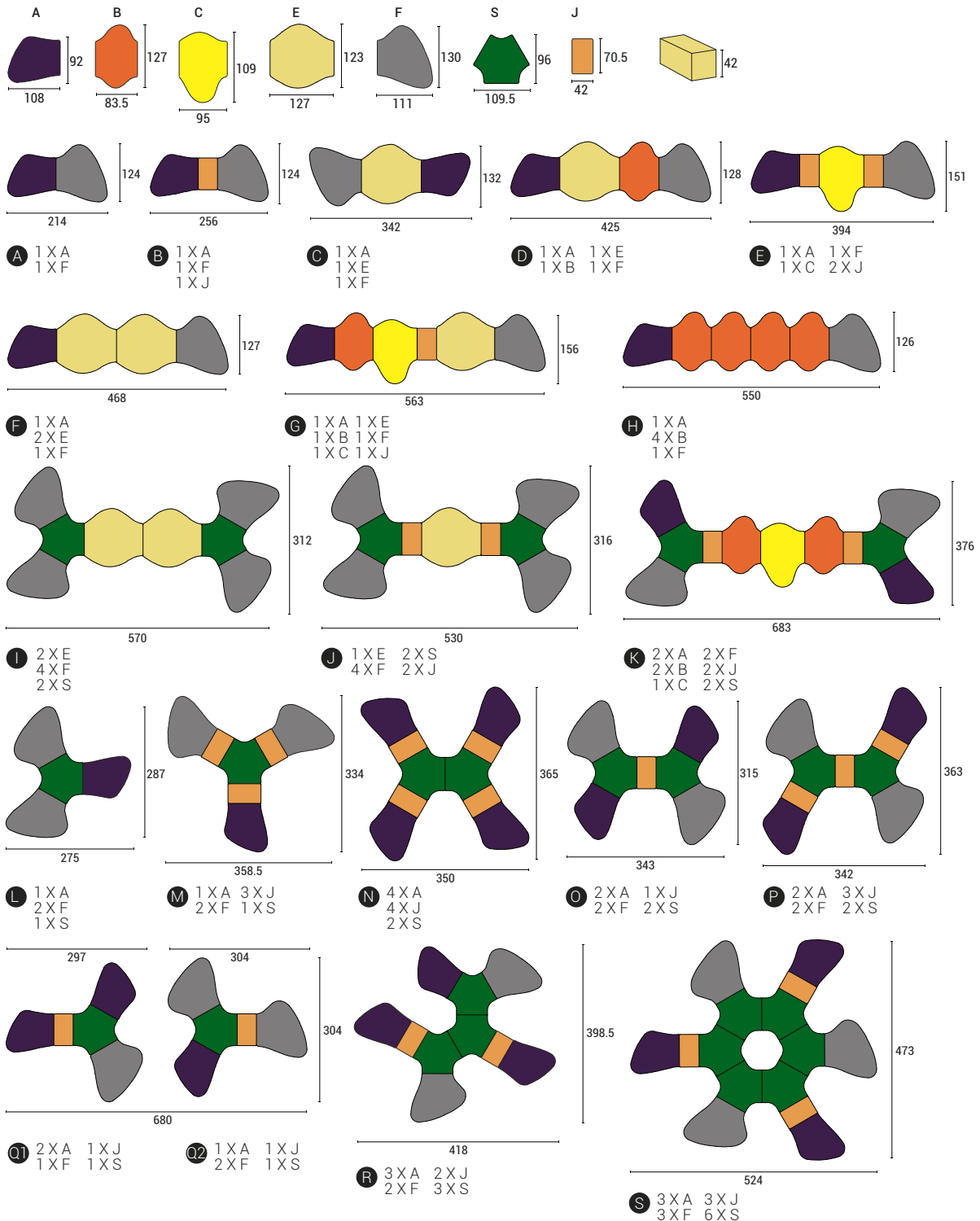
<https://adrenalina.it/sir-pent/>

adrenalina  
WE ARE DIFFERENT!

# SIR-PENT

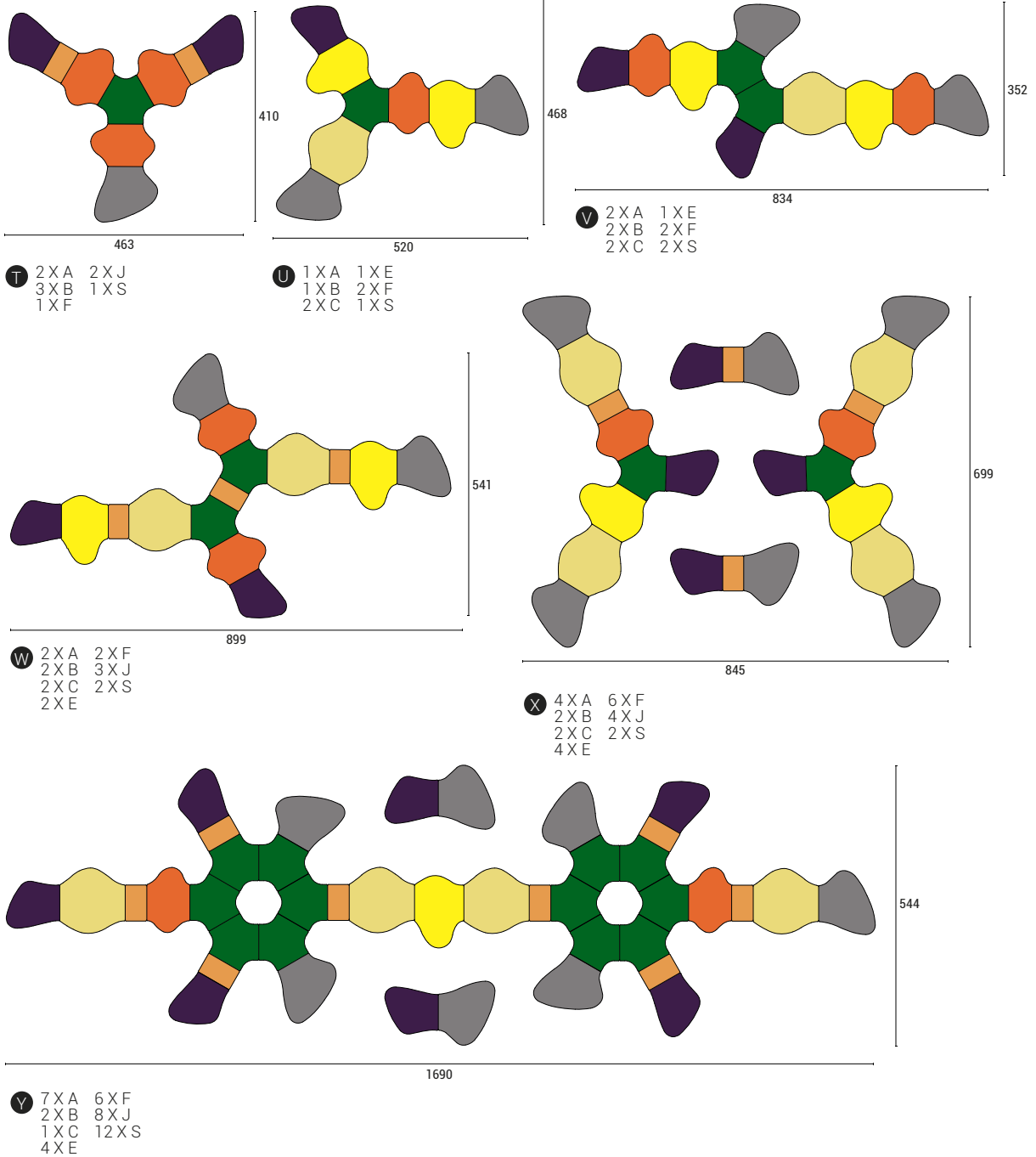
DESIGN ANDREA STRAMIGIOLI

## COMPOSIZIONI SUGGERITE:



# SIR-PENT

DESIGN ANDREA STRAMIGIOLI



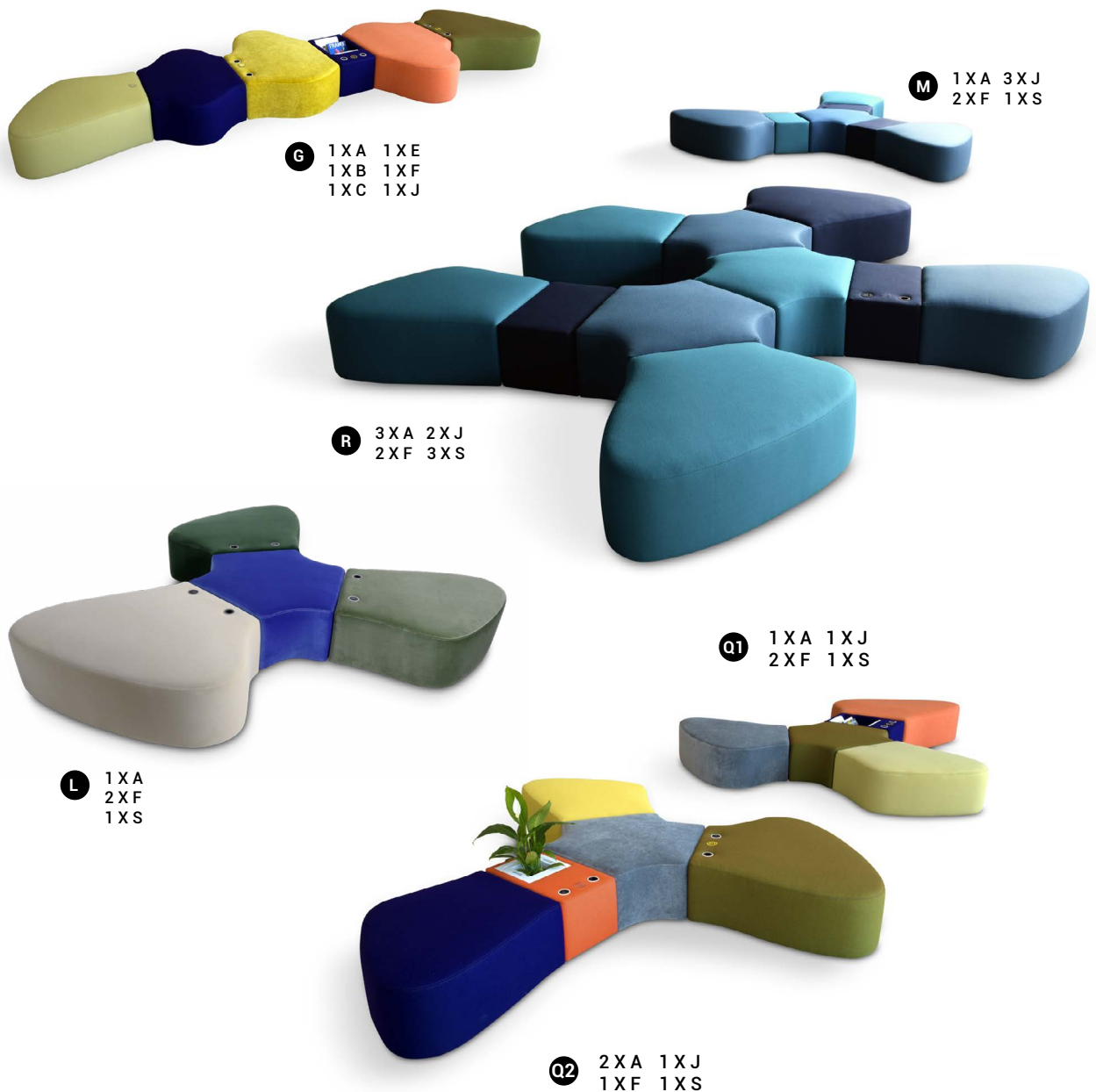
# SIR-PENT

DESIGN ANDREA STRAMIGIOLI

## RIVESTIMENTI CONSIGLIATI:



## PHOTO GALLERY:



<https://adrenajina.it/sir-pent/>

**adrenajina**  
WE ARE DIFFERENT!



DESIGN ANDREA STRAMIGIOLI

# SIR-PENT



**P** 2XA 3XJ  
2XF 2XS



**K** 2XA 2XS  
2XB 2XF  
1XC 2XJ