



MONTERA MAS

Leather Bar Stool - Sgabello da bar

design - Roberto Lazzeroni



Montera Mas interpreta il profilo sinuoso e avvolgente che caratterizza il modello originario all'insegna della generosità delle forme e del comfort. La maggiore imbottitura, il rivestimento sfoderabile in tessuto e lo slanciato basamento in metallo rendono Montera Mas leggera e adatta ai contesti più vari, dal residenziale al contract.

CARATTERISTICHE TECNICHE

Scocca. Poliuretano rigido ottenuto da stampo.

Imbottitura schienale e seduta. In poliuretano espanso.

Rivestimento. In Pelle Frau® o in tessuto:

- ColorSphere® (SC)
- ColorSphere® (SC) bicolore
- Nest
- Nest bicolore
- Fabric A
- Fabric B
- Fabric C
- C.O.M.

N.B. L'opzione bicolore prevede una maggiorazione del 5% rispetto al prezzo della categoria pelle.

Sfoderabilità. Prevista sia per il rivestimento in pelle che in tessuto.

SEDIA E POLTRONCINA

Gambe. Disponibili in:

- legno massello di frassino con distanziali in nylon nero
- in acciaio con puntali di protezione in materiale plastico o puntali orientabili in plastica nera dotati di feltrino (NB: con i puntali orientabili la sedia sarà più alta di 1 cm).

Finitura gambe.

- Frassino tinto wengé (32)
- Frassino tinto moka (61)
- Acciaio verniciato Brunito
- Acciaio verniciato Titanio

Finiture speciali aggiuntive con sovrapprezzo:

- Frassino tinto a campione
- Frassino laccato RAL a campione.

In questi casi è previsto un sovrapprezzo con tempi minimi di consegna a 60 gg dall'ordine e dal ricevimento del campione.

SGABELLI H 66 E H 74

Gambe. Disponibili in:

- legno massello di frassino con distanziali in nylon nero
- in acciaio con puntali di protezione in materiale plastico.

Finitura gambe.

- Frassino tinto wengé (32)

Montera Mas interprets the sinuous and enveloping profile that characterises the original model, with an emphasis on generosity of shapes and comfort. The increased padding, the removable fabric upholstery and the slender metal base make Montera Mas light and suitable for a wide variety of settings, from residential to contract.

TECHNICAL FEATURES

Shell. Moulded rigid polyurethane.

Padding. Polyurethane foam.

Upholstery. Pelle Frau® leather or fabric:

- ColorSphere® (SC)
- ColorSphere® (SC) two-tone
- Nest
- Nest bicolour
- Fabric A
- Fabric B
- Fabric C
- C.O.M.

Please note: The two-tone option includes a 5% surcharge on top of the price of the leather category.

Removability. Available for both the leather and fabric cover.

CHAIR AND ARMCHAIR

Legs. Available in:

- solid ash wood with black nylon spacers
- steel, with plastic protective caps or adjustable tips in black plastic with felt (Please note: with the adjustable tips, the chair will be 1 cm higher).

Legs finishes.

- Ash in a wenge stain (32)
- Ash in a moka stain (61)
- Burnished painted steel
- Titanium painted steel

Special additional finishes at an extra charge:

- Ash stained, as per sample
- RAL lacquered ash, as per sample.

There is an additional cost for these finishes, with a minimum delivery time of 60 days from the order and receipt of the sample.

H 66 AND H 74 STOOLS

Legs. Available in:

- solid ash wood with black nylon spacers
- steel with plastic protective.

Legs finishes.

- Ash in a wenge stain (32)



Montera Mas Sedie, Poltroncine e Sgabelli / Chairs, Small Armchairs, Stools

- Frassino tinto moka (61)
- Acciaio verniciato Brunito
- Acciaio verniciato Titanio

Gambe in legno. Gli sgabelli presentano puntali in plastica e un lamierino metallico con finitura canna di fucile a protezione del poggiatesta sulla parte superiore.

Gambe in acciaio. Gli sgabelli presentano 4 gambe tubolari coniche collegate tra loro da un anello poggiatesta nella stessa finitura della base e dotato di una piastra di protezione anti-graffio in acciaio inox spazzolato.

SGABELLO CON COLONNA

Basamento. In acciaio cromato, è composto da piastra di sostegno a crociera, colonna, poggiatesta e piatto circolare. La piastra a crociera, dotata di distanziali in nylon nero, fissa la scocca al basamento. Il poggiatesta è un tubolare caratterizzato da una lavorazione a zigrinatura con motivo a diamante. La parte superiore della colonna (al di sopra del poggiatesta) è rivestita in pelle in abbinamento al rivestimento della scocca. Dei feltrini sono posti a protezione del pavimento.

Funzioni.

- 1- Rotazione a 360°
- 2- Regolazione in altezza che avviene mediante una molla a gas comandata da una leva in acciaio cromato posta sotto la seduta.

Nella stessa famiglia.

Montera chair
Montera stool

- Ash in a moka stain (61)
- Burnished painted steel
- Titanium painted steel

Legs. The stools feature plastic caps and a metal sheet with a gunmetal grey finish, which protects the upper part of the tubular footrest.

Steel legs. The stools have 4 tapering tubular feet connected with a circular footrest with the same finish as the base equipped with an anti-scratch protective plate in brushed stainless steel.

COLUMN-BASE STOOL

Base. Made of chrome plated steel, the base is composed of a four-bracket joint plate structure, a column, a tubular footrest and a flat round base. The joint plate, which features black nylon spacers, secures the seat shell to the base. The tubular footrest features a diamond-shaped knurled effect. The upper part of the column (above the footrest) is upholstered in leather matching the seat shell upholstery. Felt pads protect the floor.

Functions.

- 1- 360° rotation
- 2- Height-adjusting with gas springs controlled by a chromed steel lever placed under the seat shell.

In the same family.

Montera chair
Montera stool



Montera Mas

Montera Mas Sedie, Poltroncine e Sgabelli / Chairs, Small Armchairs, Stools

5559005



wood legs

83 / 32 3/4
48 / 19"



44 / 17 1/4 47 / 18 1/2
58 / 22 3/4 51 / 20"

5559005



metal legs

83 / 32 3/4
47 / 18 1/2"



44 / 17 1/4 47 / 18 1/2
58 / 22 3/4 51 / 20"

5559095



wood legs

105 / 41 1/4
77 / 30 3/4"



44 / 17 1/4 47 / 18 1/2
58 / 22 3/4 51 / 20"

5559095



metal legs

104 / 41"
76 / 30"



44 / 17 1/4 47 / 18 1/2
58 / 22 3/4 47 / 18 1/2"

5559095



wood legs

103 / 40 1/2
68 / 26 3/4"



44 / 17 1/4 47 / 18 1/2
62 / 24 1/4 47 / 18 1/2"

5559095



metal legs

95 / 37 1/2
67 / 26 1/2"



44 / 17 1/4 47 / 18 1/2
58 / 22 3/4 47 / 18 1/2"

5559095



93-118 / 36 1/2-46 1/2
56-81 / 22"-32"

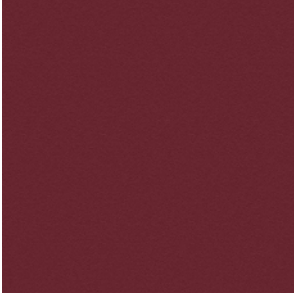


44 / 17 1/4 47 / 18 1/2
54 / 21 1/4 47 / 18 1/2"

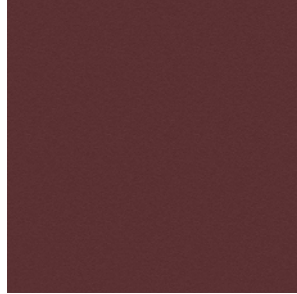
Upholstery | Pelle Frau® leather:

Rivestimento | In Pelle Frau®:

Pelle Frau® Colorsphere



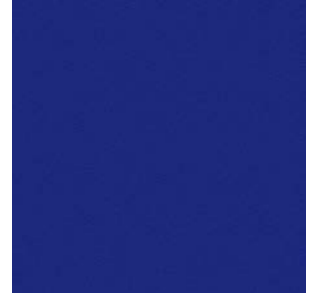
SC 92 Garnet
SC 92 Granato



SC 93 Paperback
SC 93 Brossura



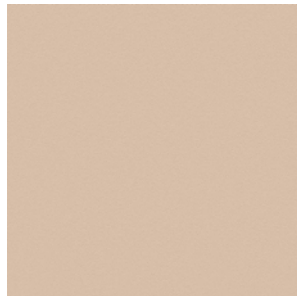
SC 187 Wild
SC 187 Selva



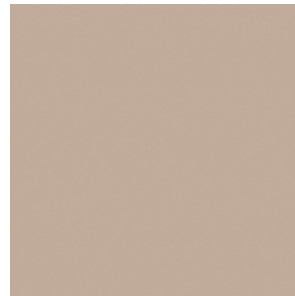
SC 248 Iris
SC 248 Iris



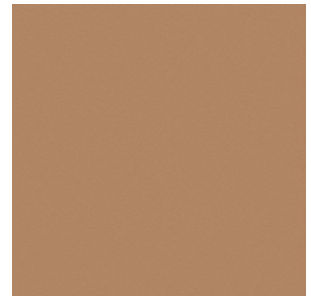
SC 255 Pretty Woman
SC 255 Belladonna



SC 42 Make-Up
SC 42 Maquillage



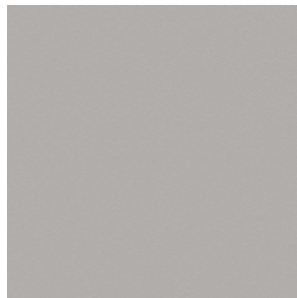
SC 44 Hazelnut
SC 44 Noisette



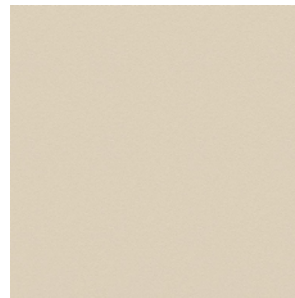
SC 56 Cowhide
SC 56 Vachette



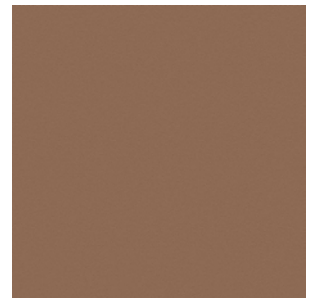
SC 128 Red Carmine
SC 128 Carminio Rosso



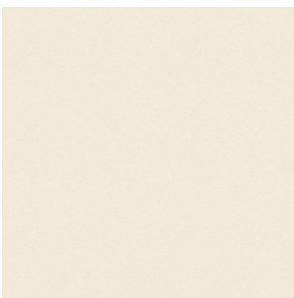
SC 23 Dove
SC 23 Tortora



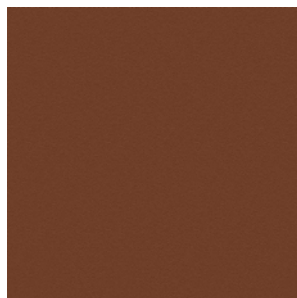
SC 51 Cream
SC 51 Panna



SC 56 Siena
SC 56 Siena



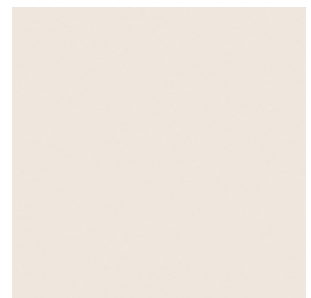
SC 01 Ivory
SC 01 Avorio



SC 67 Cloves
SC 67 Chiodi di Garofano



SC 99 Carob
SC 99 Carrubo



SC 06 Calicot
SC 06 Calicot



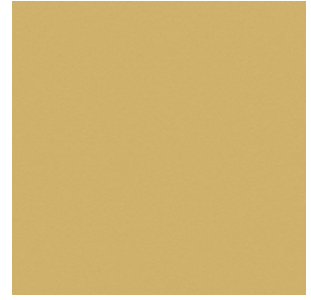
SC 120 Calypso
SC 120 Calypso



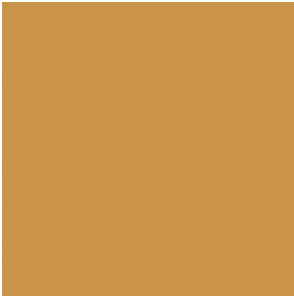
SC 250 Vermillion
SC 250 Vermillion



SC 274 Fresh Blue
SC 274 Fresco Blue



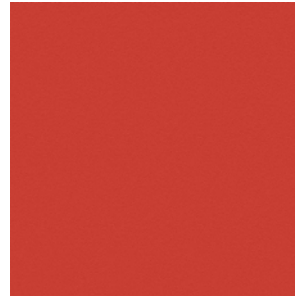
SC 133 Straw
SC 133 Paglierino



SC 136 Ginger Bread
SC 133 Pan Di Zenzero



SC 140 Mimosa
SC 140 Mimosa



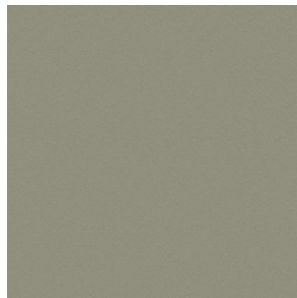
SC 146 Roof Pesto
SC 146 Coccio Pesto



SC 10 Anthracite
SC 10 Antracite



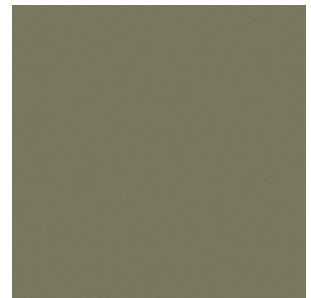
SC 148 Lacquer
SC 148 Lacca



SC 173 Glaucus
SC 173 Glauco



SC 175 Bengali Green
SC 175 Verde Bengali



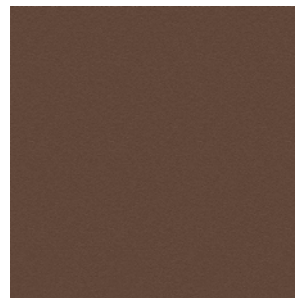
SC 176 Dock
SC 176 Darsena



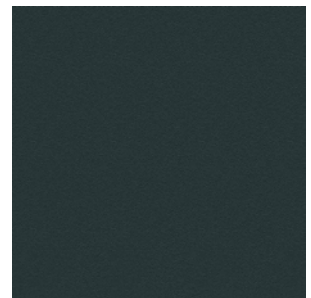
SC 177 Silt
SC 177 Limo



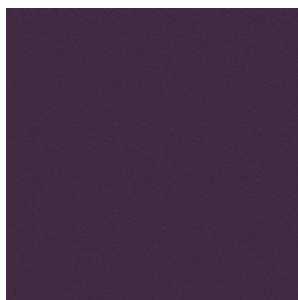
SC 178 Alps
SC 178 Alpi



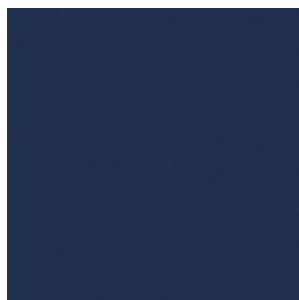
SC 179 Heath
SC 179 Brughiera



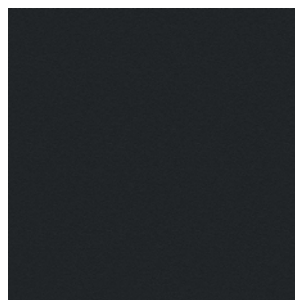
SC 209 Cypress
SC 209 Cipresso



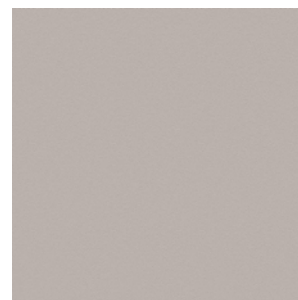
SC 256 Ume
SC 256 Ume



SC 278 Atlantic Blue
SC 278 Blu Atlantico



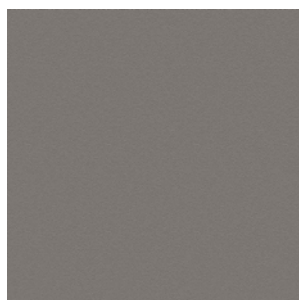
SC 20 Ink
SC 20 Inchiostro



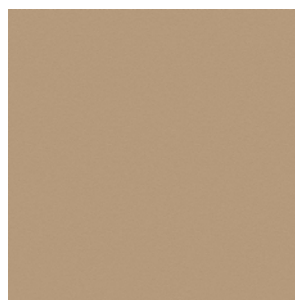
SC 31 Smoky Quartz
SC 31 Quarzo Fume



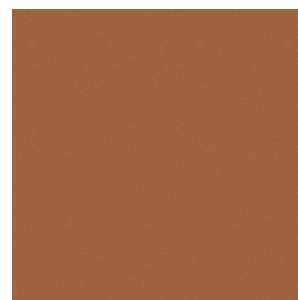
SC 33 Travertine
SC 33 Travertino



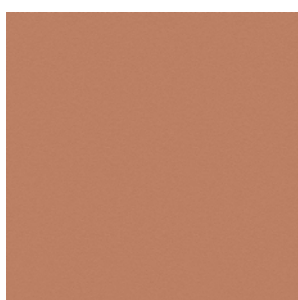
SC 26 Mouse
SC 26 Topo



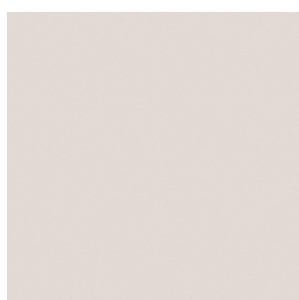
SC 52 Buck
SC 52 Daino



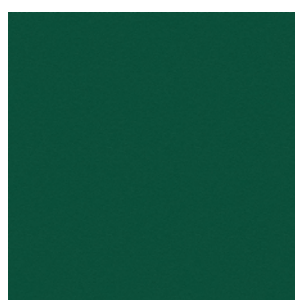
SC 66 India
SC 66 India



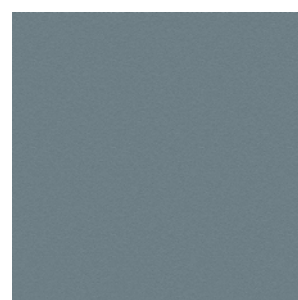
SC 74 Hazelnut
SC 74 Nocciola



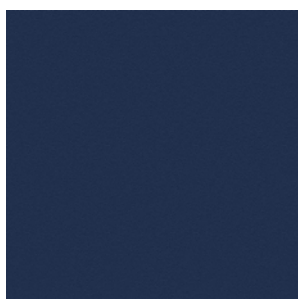
SC 05 Stucco
SC 05 Stucco



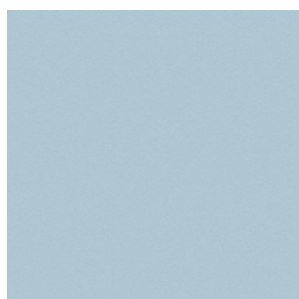
SC 188 Vidrian
SC 188 Vidriana



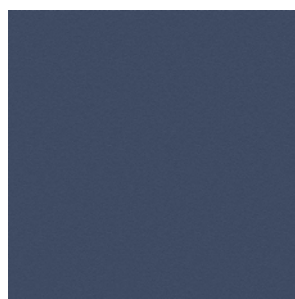
SC 254 Steel Blue
SC 254 Blu Acciaio



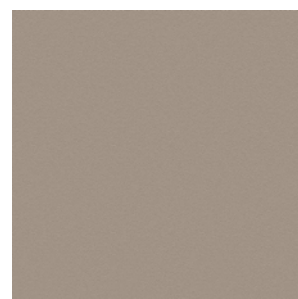
SC 258 Mist
SC 258 Nebbia



SC 233 Bardiglio
SC 233 Bardiglio



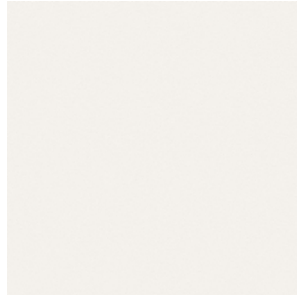
SC 279 Alchemy
SC 279 Alchimia



SC 34 Fallow
SC 34 Maggese



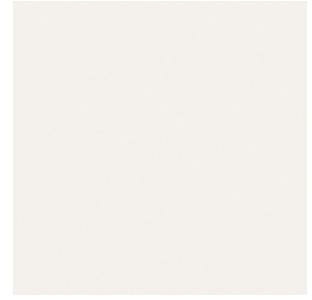
SC 46 Biscuit
SC 46 Biscotto



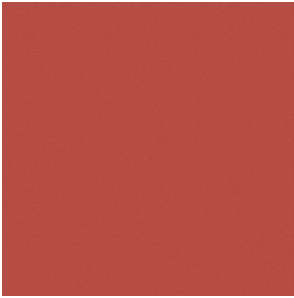
SC 0 Polar
SC 0 Polare



SC 127 Siam
SC 127 Siam



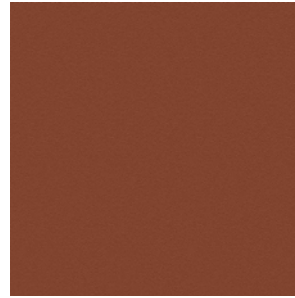
SC 28 Seppia
SC 28 Seppia



SC 96 Brick
SC 96 Mattone



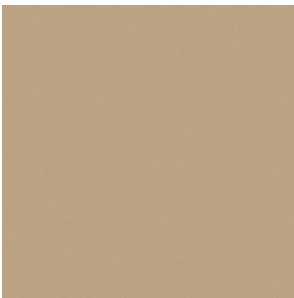
SC 80 Bruno L'avana
SC 80 Bruno Havana



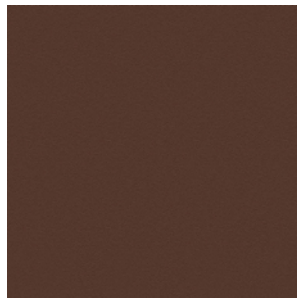
SC 48 Tonka
SC 48 Tonka



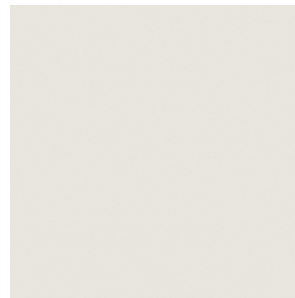
SC 55 Caramel Hair
SC 55 Capelli Caramello



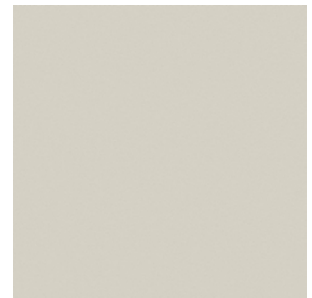
SC 53 Crete
SC 53 Creta



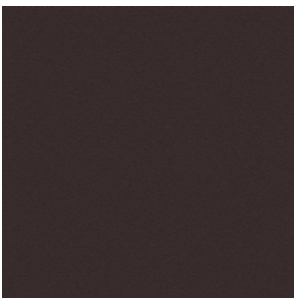
SC 59 Pecan Nut
SC 59 Noce di Pecan



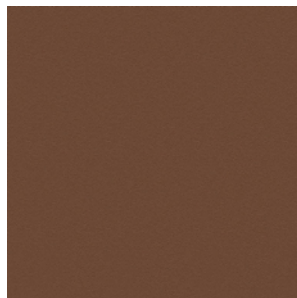
SC 04 White Milk
SC 04 Latte Bianco



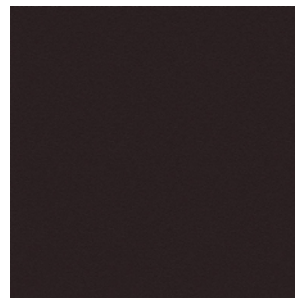
SC 21 Asbestos
SC 21 Amianto



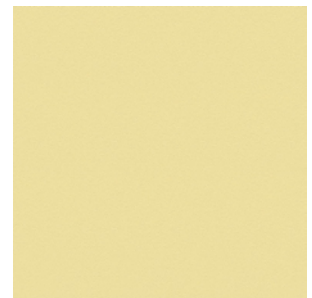
SC 29 Slate
SC 29 Ardesia



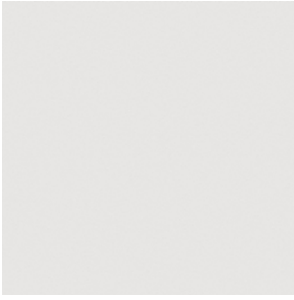
SC 57 Peat
SC 57 Torba



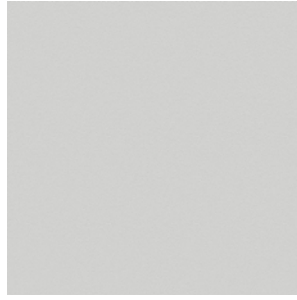
SC 100 Fondant
SC 100 Fondant



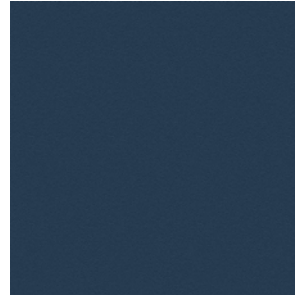
SC 132 Eggshell
SC 132 Guscio D'uovo



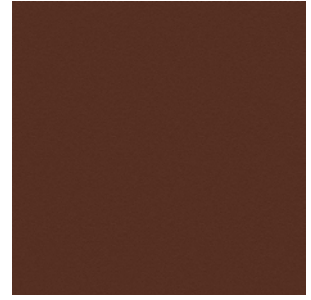
SC 19 Georgette
SC 19 Georgetta



SC 22 Chiffon
SC 22 Chiffon



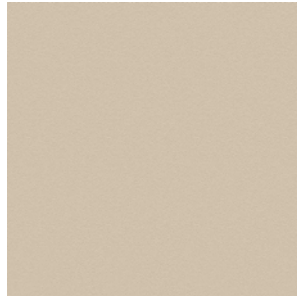
SC 276 Mineral Blue
SC 276 Blu Minerale



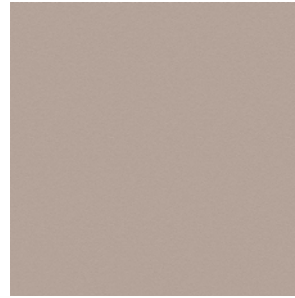
SC 69 Brown Iroko
SC 69 Iroko Marrone



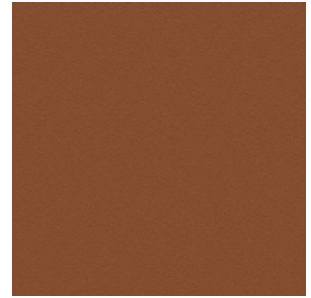
SC 280 Abyss
SC 280 Abisso



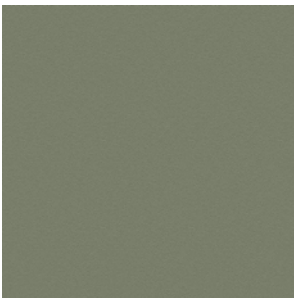
SC 32 Kaolin
SC 32 Caolino



SC 40 Cachmire
SC 40 Cachemire

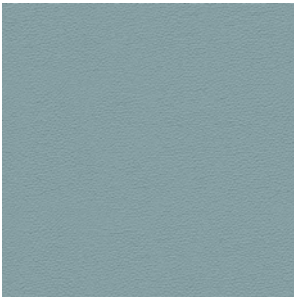


SC 68 Sahara Brown
SC 68 Sahara Marrone

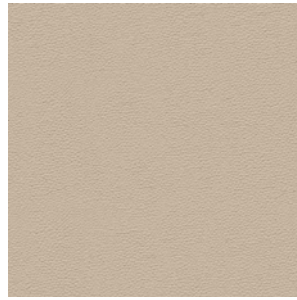


SC 180 Celadon
SC 180 Celadon

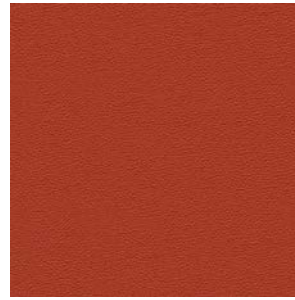
Pelle Frau® Nest



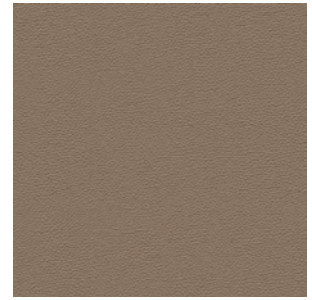
Chalcedony
Calcedonio



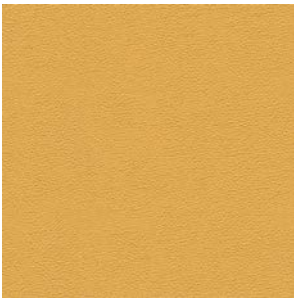
Mother Of Pearl
Madreperla



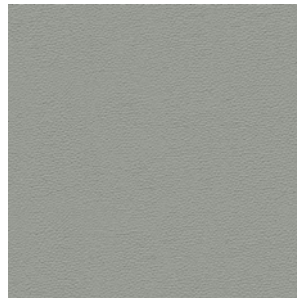
Mars
Marte



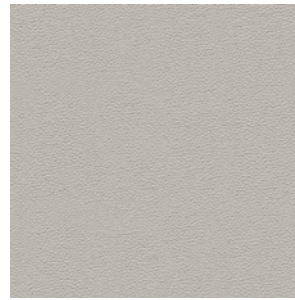
Sandstone
Arenaria



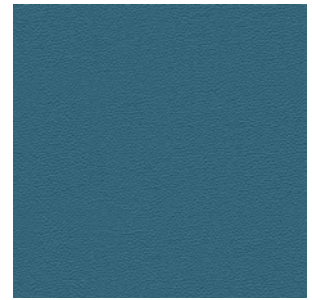
Amber
Ambra



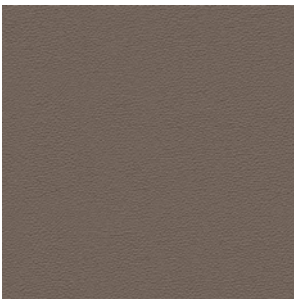
Concrete
Cemento



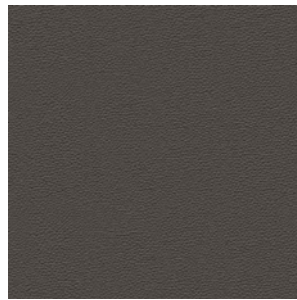
Moon
Luna



Blue
Azul



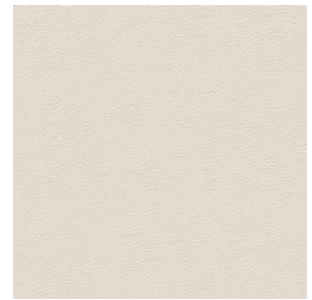
Clay
Argilla



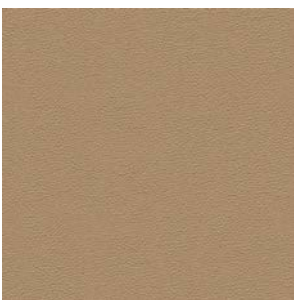
Graphite
Grafite



Malachite
Malachite



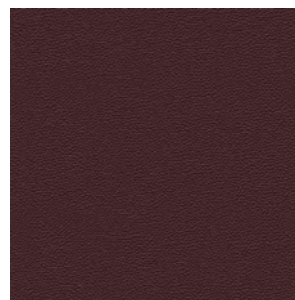
Silica
Silice



Tuff
Tufo



Ammonite
Ammonite



Garnet
Granato



Larimar
Larimar

Upholstery | Fabric:
Rivestimento | Tessuto:

Fabric A: Giano



7 DARK



7 LIGHT



9 DARK



9 LIGHT



3 DARK



3 LIGHT

Nouveau



10 SCURO



13 CHIARO



03



10 CHIARO



13 SCURO

Paltò



BIANCO 01



TESTA DI MORO 10

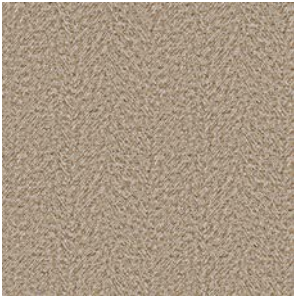


TOPO 13

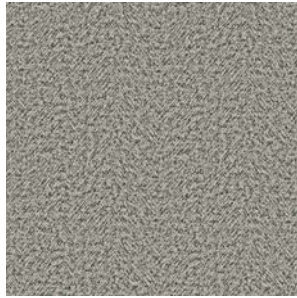
Upholstery | Fabric:

Rivestimento | Tessuto:

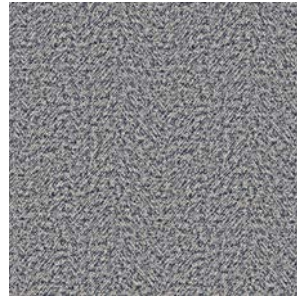
Fabric B: Scottish



20

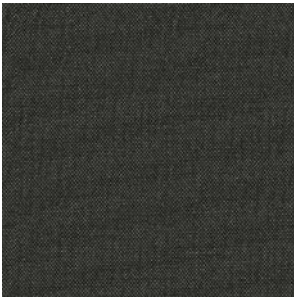


33



31

Fabric B: Shine



Forest
Foresta



Silver
Argento



Starry blue
Blu stellato

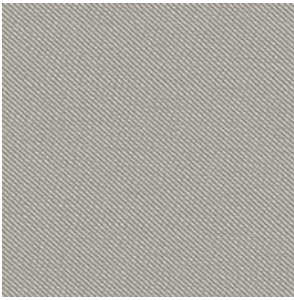


Beige
Beige

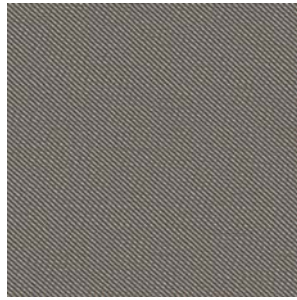


Black iris
Iris nero

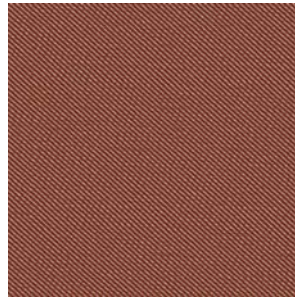
Fabric B: Twill



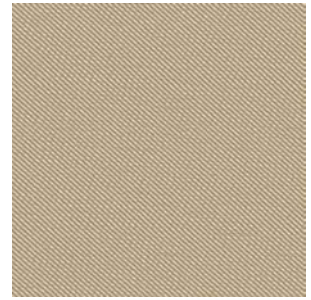
018 Gray
018 Grigio



109 Ash
109 Cenere



102 Rust
102 Ruggine



114 Beige
114 Beige



004 Cotto
004 Cooked

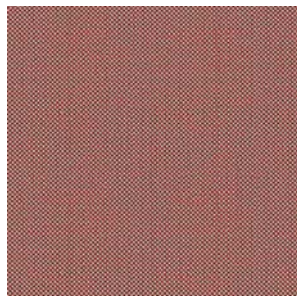


006 Water
006 Acqua

Fabric B: Damie



429.090



429.058



429.110



429.011



429.031

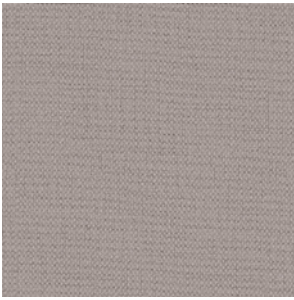


429.032

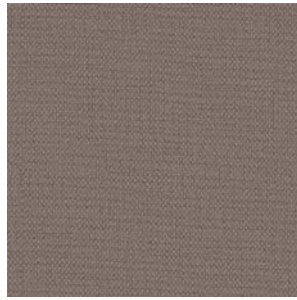


429.052

Fabric B: Guatemala



Grey
Grigio



Cork
Sughero



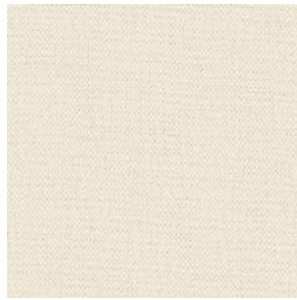
Beaver
Castoro



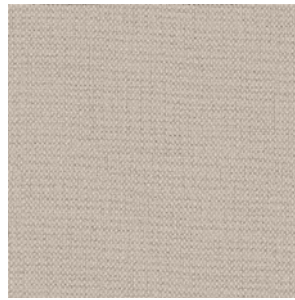
Board
Lavagna



Lead
Piombo

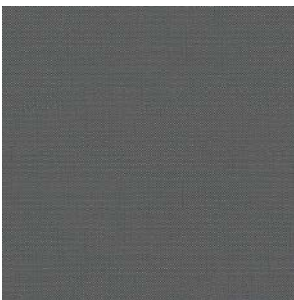


White
Bianco



Ecu
Ecu

Fabric B: Penelope



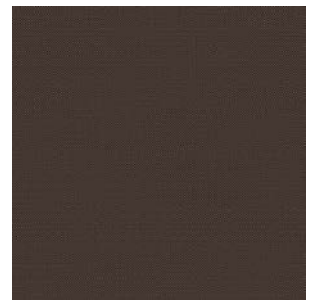
1722



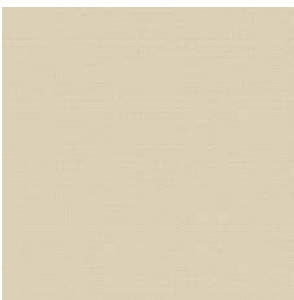
1724



1760



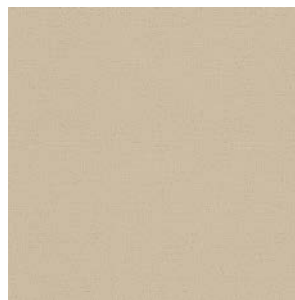
1762



1700



1779



1705

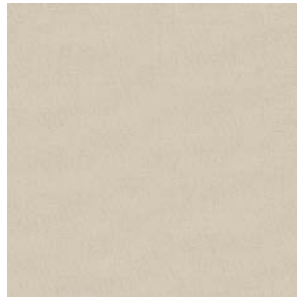


1710

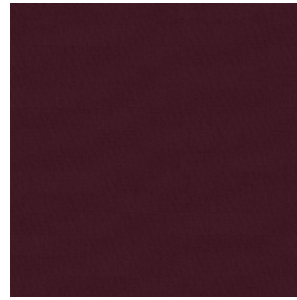
Fabric B: Hermoso



24



01



05



07



08



09



10



11



17

Fabric C.O.M.

Fabric/Mt. plain 0.60 Fabric/Mt. repeat 0.70

To verify the available fabrics please consult the dedicated table "Combination models-fabrics pattern".

Fabric/Mt. plain 0.60 Fabric/Mt. repeat 0.70

Per verificare i tessuti disponibili si prega di consultare la tabella dedicata "Schema abbinamento prodotti-tessuti".