



# Archibald

## Sofa - Armchair

### Design- Jean-Marie Massaud

Technical sheet  
Scheda tecnica



Il design avvolgente viene esaltato dal libero gioco di pieghe che la pelle crea su tutta la parte interna dello schienale, rendendola piacevolmente mossata. Le preziose cuciture a contrasto lungo i bordi e sulle superfici esterne del rivestimento, danno una nota di raffinata eleganza.

The enveloping design is exalted by the free play of folds that the leather creates across the internal part of the backrest, making it pleasantly undulating. The precious contrasting stitching along the seams and on the external surfaces of the upholstery creates a refined elegance.

#### CARATTERISTICHE TECNICHE

##### Modelli.

- Archibald
- Archibald Sofa
- Archibald A
- Archibald King
- Archibald Large
- Pouf

**Struttura schienale e sedile.** Realizzata in acciaio.

**Molleggio.** Cinghie elastiche.

**Imbottitura.** Poliuretano espanso ottenuto da stampo ed espanso sagomato con ovatta poliestere per le zone di maggiore comfort.

**Struttura pouf.** Multistrato di betulla.

**Imbottitura pouf.** Espanso sagomato con ovatta poliestere.

**Basamento.** Composto da quattro piedi in fusione di alluminio e telaio in tubolare di acciaio, disponibile in due finiture:

- canna di fucile
- brunito
- verniciato titanio

**Rivestimento.** In Pelle Frau®:

- ColorSphere® (SC)
- Nest
- Soul
- Velvety
- Fabric A
- Fabric B
- Fabric C
- C.O.M.

**Sfoderabilità.** Prevista solo per la versione in tessuto.

**Dettagli estetici.** La versione in pelle è impreziosita da cuciture a contrasto lungo i bordi e sulle superfici esterne. La versione in tessuto invece presenta cuciture tono su tono.

**Nella stessa collezione.**

- Archibald Dining chair
- Archibald Gran Comfort
- Archibald Stool

#### TECHNICAL FEATURES

##### Items.

- Archibald
- Archibald A
- Archibald Sofa
- Archibald King
- Archibald Large
- Ottoman

**Backrest and seat structure.** Made of steel.

**Suspension.** Elastic belts.

**Padding.** Moulded polyurethane foam and shaped foam with polyester wadding for the greatest comfort zones.

**Ottoman structure.** Birch plywood.

**Ottoman padding.** Shaped polyurethane foam and polyester wadding.

**Base.** Four cast aluminium feet connected to a tubular steel frame, available in two finishes:

- gunmetal grey finish
- burnished finish
- titanium finish

**Upholstery.** Pelle Frau® leather:

- ColorSphere® (SC)
- Nest
- Soul
- Velvety
- Fabric A
- Fabric B
- Fabric C
- C.O.M.

**Removability.** Prevista solo per la versione in tessuto.

**Aesthetic details.** Contrasting stitching along the edges and on the external surfaces of the leather upholstery. Tone-on-tone stitching for the fabric version.

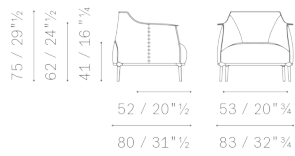
**In the same collection.**

- Archibald Dining chair
- Archibald Gran Comfort
- Archibald Stool

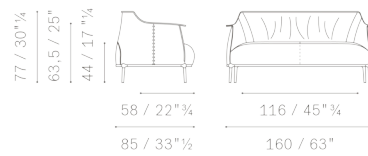
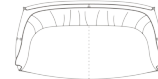


Archibald Poltrone e Divani / Armchairs and Sofas

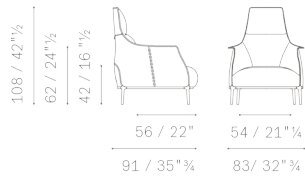
5506111



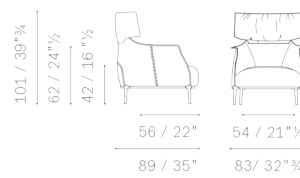
5506211



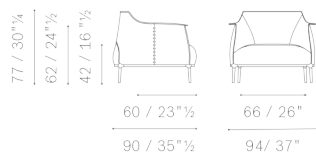
5506112



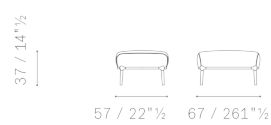
5506114



5506121



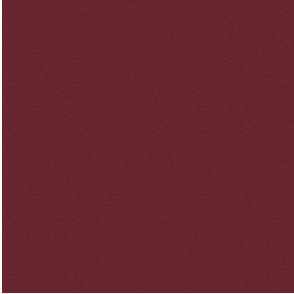
5506511



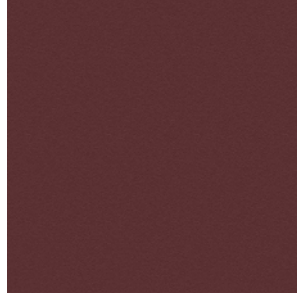
## Upholstery | Pelle Frau® leather:

Rivestimento | In Pelle Frau®:

### Pelle Frau® Colorsphere



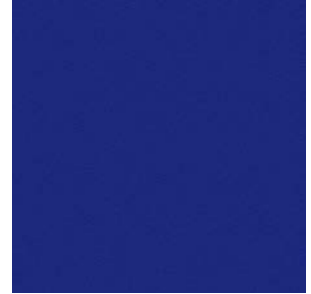
SC 92 Garnet  
SC 92 Granato



SC 93 Paperback  
SC 93 Brossura



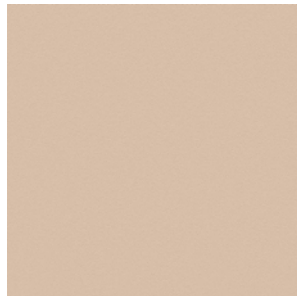
SC 187 Wild  
SC 187 Selva



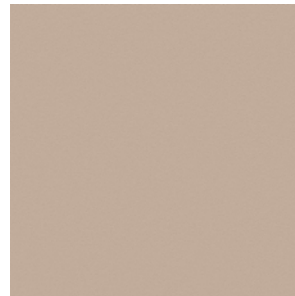
SC 248 Iris  
SC 248 Iris



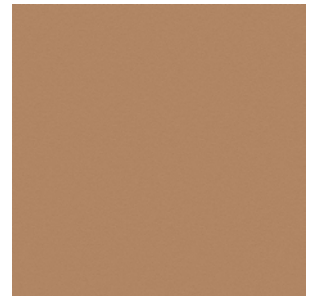
SC 255 Pretty Woman  
SC 255 Belladonna



SC 42 Make-Up  
SC 42 Maquillage



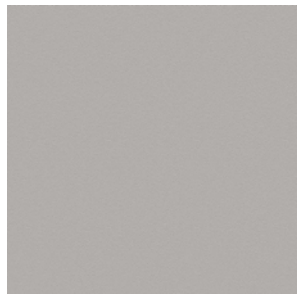
SC 44 Hazelnut  
SC 44 Noisette



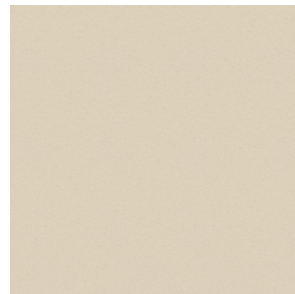
SC 56 Cowhide  
SC 56 Vachette



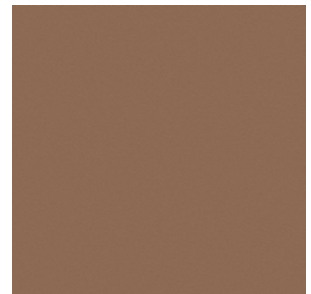
SC 128 Red Carmine  
SC 128 Carminio Rosso



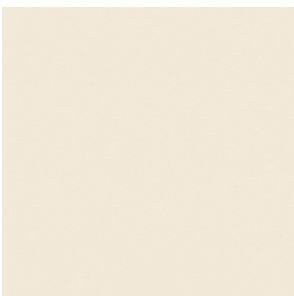
SC 23 Dove  
SC 23 Tortora



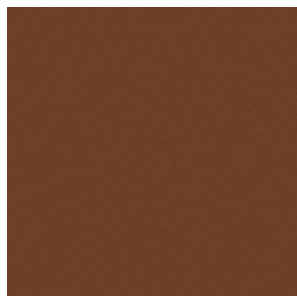
SC 51 Cream  
SC 51 Panna



SC 56 Siena  
SC 56 Siena



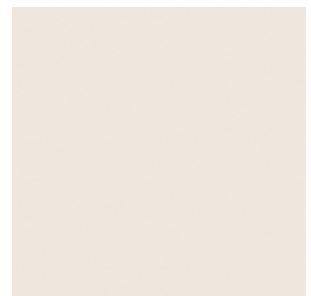
SC 01 Ivory  
SC 01 Avorio



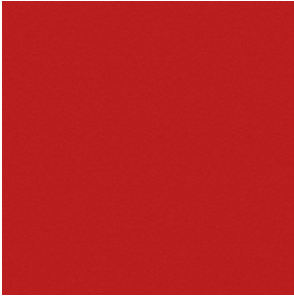
SC 67 Cloves  
SC 67 Chiodi di Garofano



SC 99 Carob  
SC 99 Carrubo



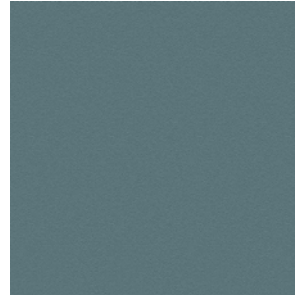
SC 06 Calicot  
SC 06 Calicot



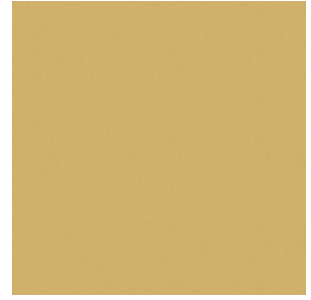
SC 120 Calypso  
SC 120 Calypso



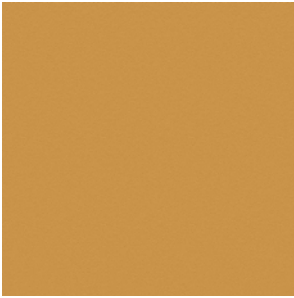
SC 250 Vermillion  
SC 250 Vermillion



SC 274 Fresh Blue  
SC 274 Fresco Blue



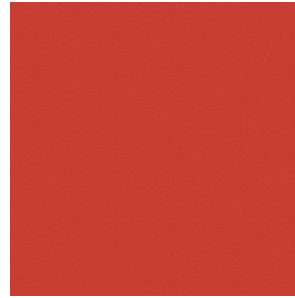
SC 133 Straw  
SC 133 Paglierino



SC 136 Ginger Bread  
SC 133 Pan Di Zenzero



SC 140 Mimosa  
SC 140 Mimosa



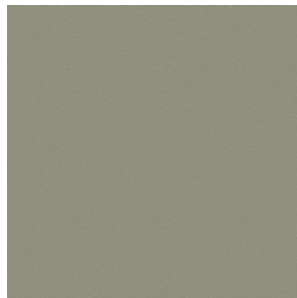
SC 146 Roof Pesto  
SC 146 Coccio Pesto



SC 10 Anthracite  
SC 10 Antracite



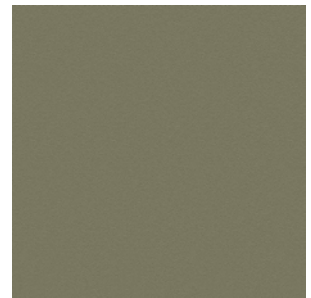
SC 148 Lacquer  
SC 148 Lacca



SC 173 Glaucus  
SC 173 Glauco



SC 175 Bengali Green  
SC 175 Verde Bengali



SC 176 Dock  
SC 176 Darsena



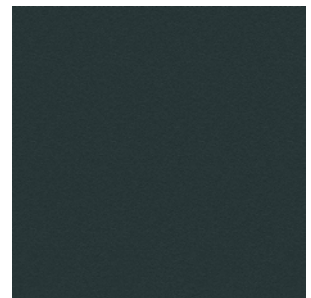
SC 177 Silt  
SC 177 Limo



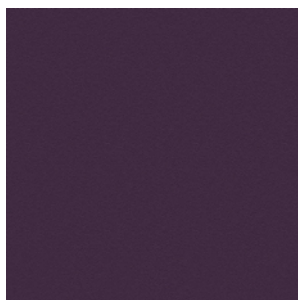
SC 178 Alps  
SC 178 Alpi



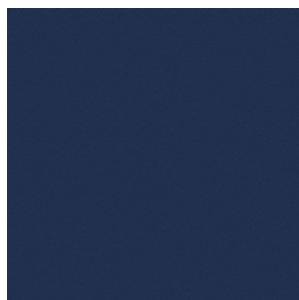
SC 179 Heath  
SC 179 Brughiera



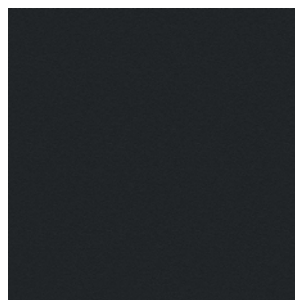
SC 209 Cypress  
SC 209 Cipresso



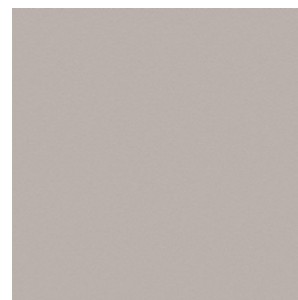
SC 256 Ume  
SC 256 Ume



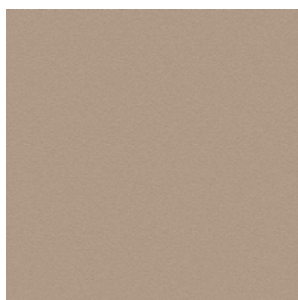
SC 278 Atlantic Blue  
SC 278 Blu Atlantico



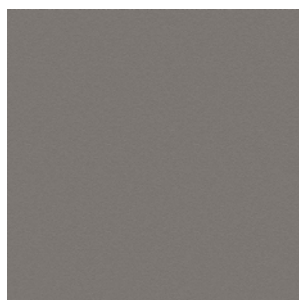
SC 20 Ink  
SC 20 Inchiostro



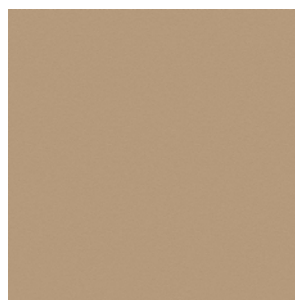
SC 31 Smoky Quartz  
SC 31 Quarzo Fume



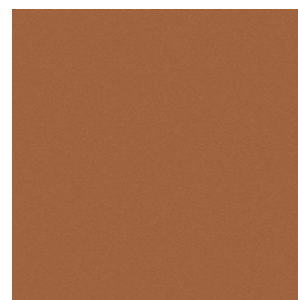
SC 33 Travertine  
SC 33 Travertino



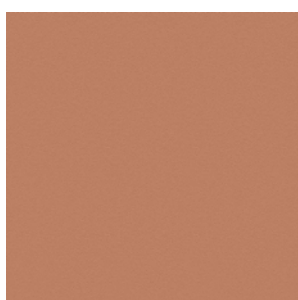
SC 26 Mouse  
SC 26 Topo



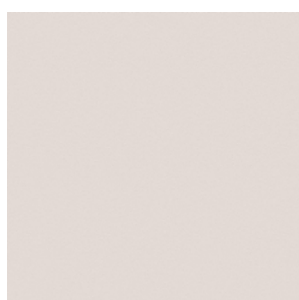
SC 52 Buck  
SC 52 Daino



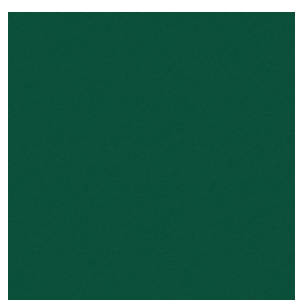
SC 66 India  
SC 66 India



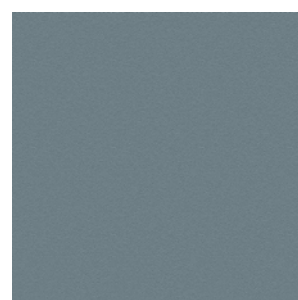
SC 74 Hazelnut  
SC 74 Nocciola



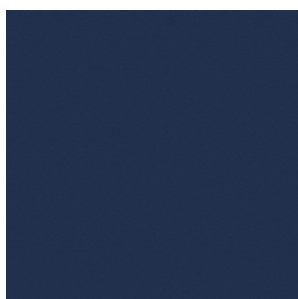
SC 05 Stucco  
SC 05 Stucco



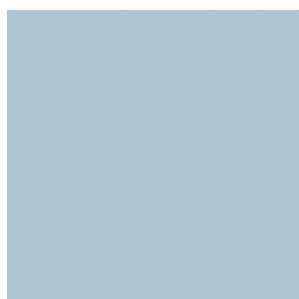
SC 188 Vidrian  
SC 188 Vidriana



SC 254 Steel Blue  
SC 254 Blu Acciaio



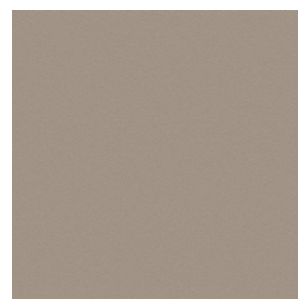
SC 258 Mist  
SC 258 Nebbia



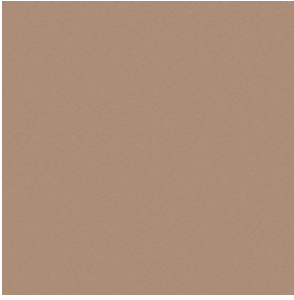
SC 233 Bardiglio  
SC 233 Bardiglio



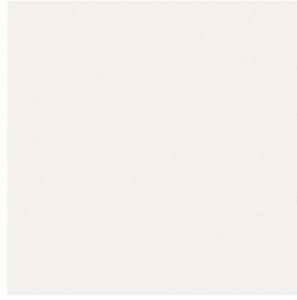
SC 279 Alchemy  
SC 279 Alchimia



SC 34 Fallow  
SC 34 Maggese



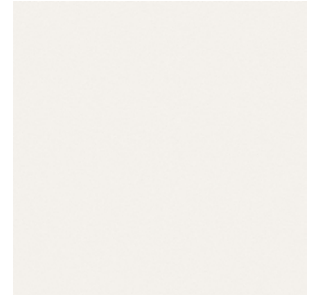
SC 46 Biscuit  
SC 46 Biscotto



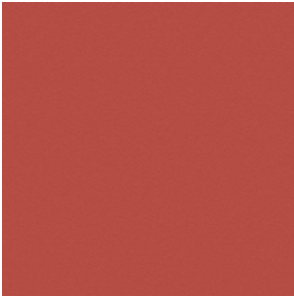
SC 0 Polar  
SC 0 Polare



SC 127 Siam  
SC 127 Siam



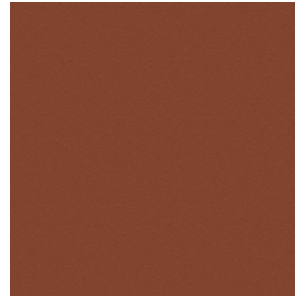
SC 28 Seppia  
SC 28 Seppia



SC 96 Brick  
SC 96 Mattone



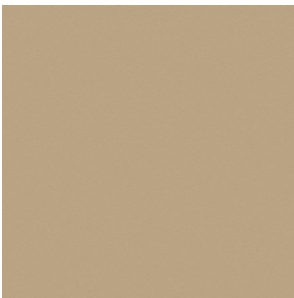
SC 80 Bruno L'avana  
SC 80 Bruno Havana



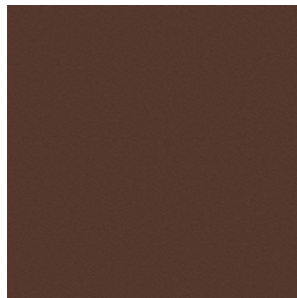
SC 48 Tonka  
SC 48 Tonka



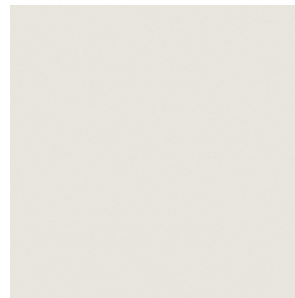
SC 55 Caramel Hair  
SC 55 Capelli Caramello



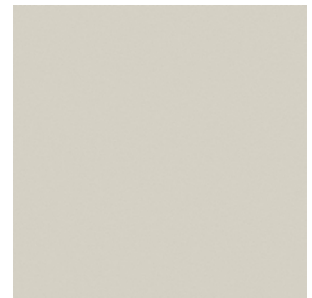
SC 53 Crete  
SC 53 Creta



SC 59 Pecan Nut  
SC 59 Noce di Pecan



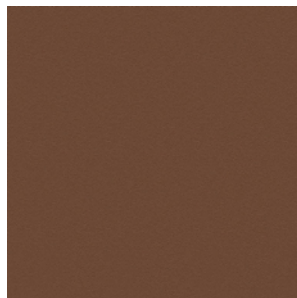
SC 04 White Milk  
SC 04 Latte Bianco



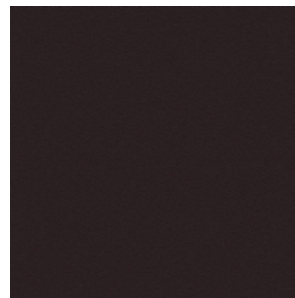
SC 21 Asbestos  
SC 21 Amianto



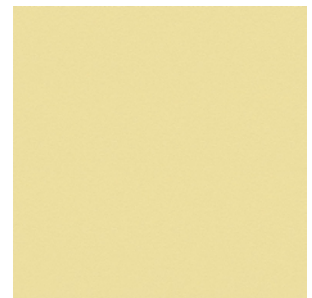
SC 29 Slate  
SC 29 Ardesia



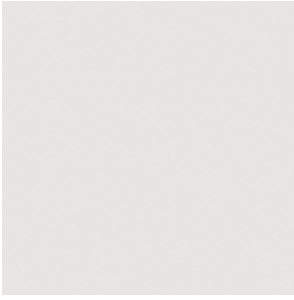
SC 57 Peat  
SC 57 Torba



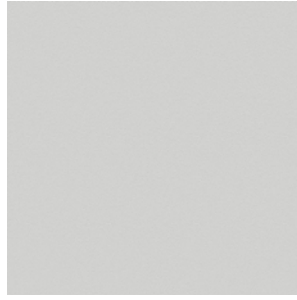
SC 100 Fondant  
SC 100 Fondant



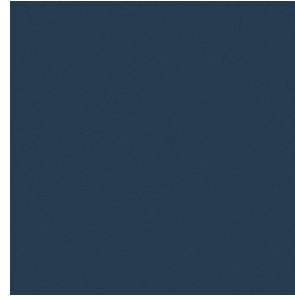
SC 132 Eggshell  
SC 132 Guscio D'uovo



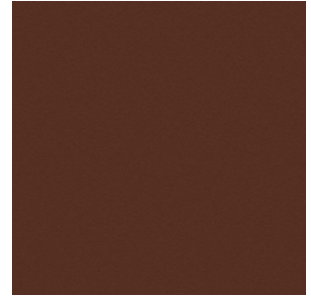
SC 19 Georgette  
SC 19 Georgetta



SC 22 Chiffon  
SC 22 Chiffon



SC 276 Mineral Blue  
SC 276 Blu Minerale



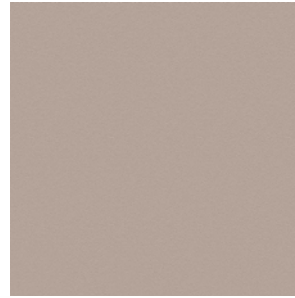
SC 69 Brown Iroko  
SC 69 Iroko Marrone



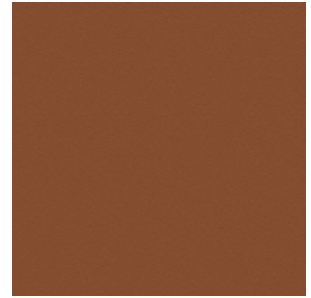
SC 280 Abyss  
SC 280 Abisso



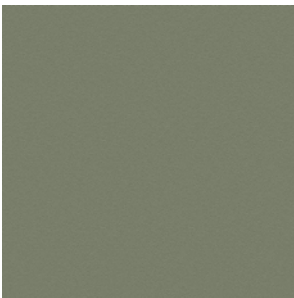
SC 32 Kaolin  
SC 32 Caolino



SC 40 Cachmire  
SC 40 Cachemire

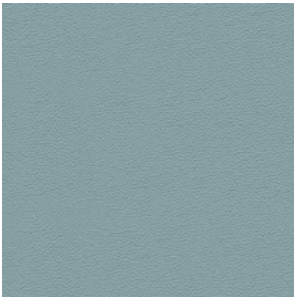


SC 68 Sahara Brown  
SC 68 Sahara Marrone

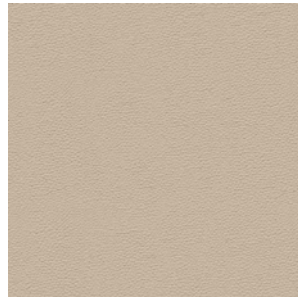


SC 180 Celadon  
SC 180 Celadon

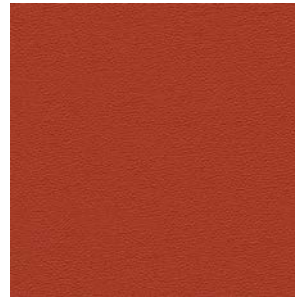
Pelle Frau® Nest



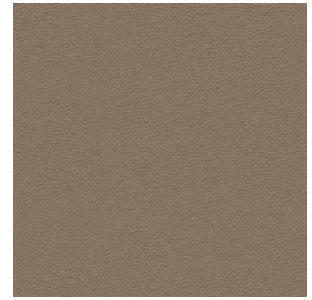
Chalcedony  
Calcedonio



Mother Of Pearl  
Madreperla



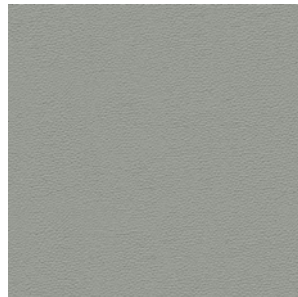
Mars  
Marte



Sandstone  
Arenaria



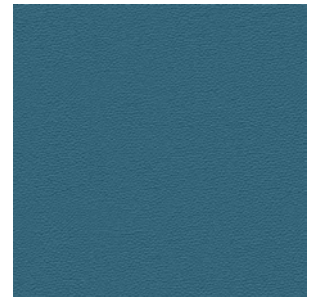
Amber  
Ambra



Concrete  
Cemento



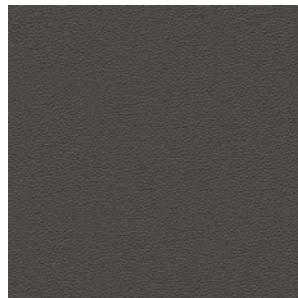
Moon  
Luna



Blue  
Azul



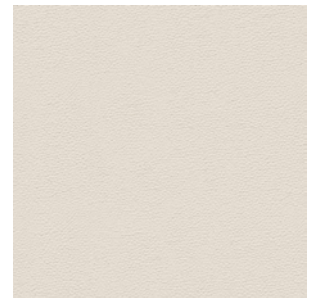
Clay  
Argilla



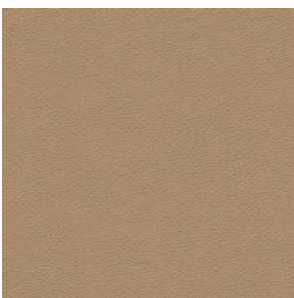
Graphite  
Grafite



Malachite  
Malachite



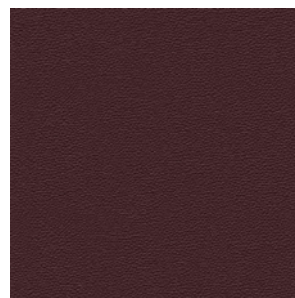
Silica  
Silice



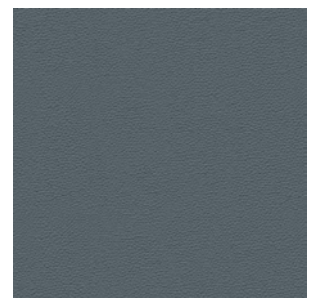
Tuff  
Tufo



Ammonite  
Ammonite



Garnet  
Granato



Larimar  
Larimar



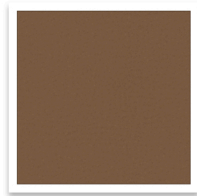


## Upholstery | Pelle Frau® leather: Rivestimento | In Pelle Frau®:

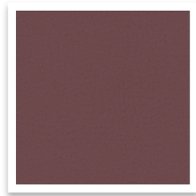
### VELVETY



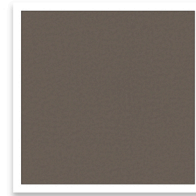
29540



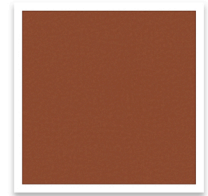
29550



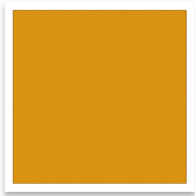
29560



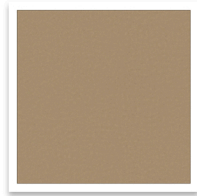
29570



29580



29590



29600

**Upholstery | Pelle Frau® leather:**  
Rivestimento | In Pelle Frau®:

Pelle Frau® Soul



AMY



ANITA



DIANA



DUSTY



JOE



NINA



OTIS



RAY



SMOKEY



STEVIE



WHITNEY



WILSON

Upholstery | Fabric:  
Rivestimento | Tessuto:

## Fabric A: Giano



7 DARK



7 LIGHT



9 DARK



9 LIGHT



3 DARK



3 LIGHT

## Nouveau



10 SCURO



13 CHIARO



03



10 CHIARO



13 SCURO

## Paltò



BIANCO 01



TESTA DI MORO 10

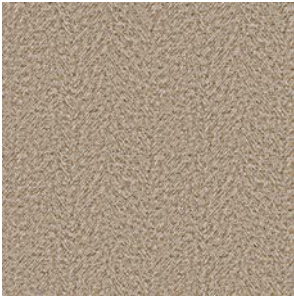


TOPO 13

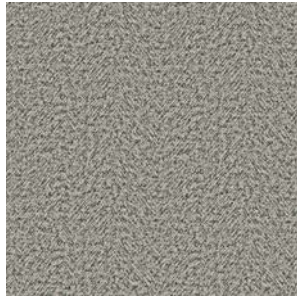
## Upholstery | Fabric:

Rivestimento | Tessuto:

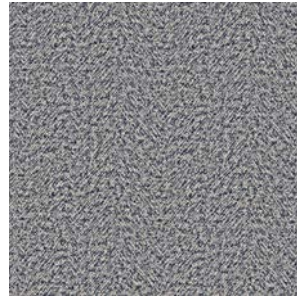
### Fabric B: Scottish



20

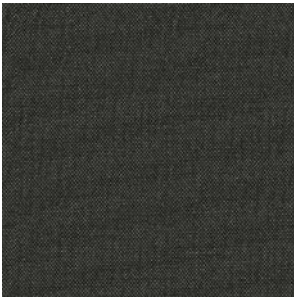


33



31

### Fabric B: Shine



Forest  
Foresta



Silver  
Argento



Starry blue  
Blu stellato

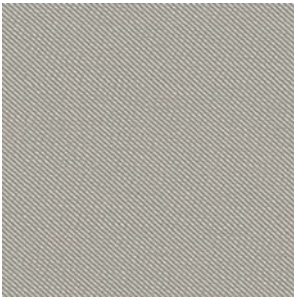


Beige  
Beige

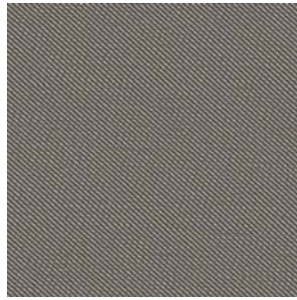


Black iris  
Iris nero

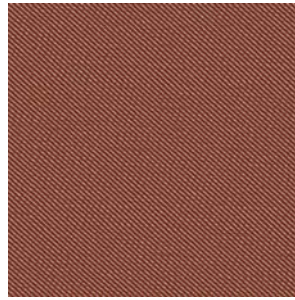
Fabric B: Twill



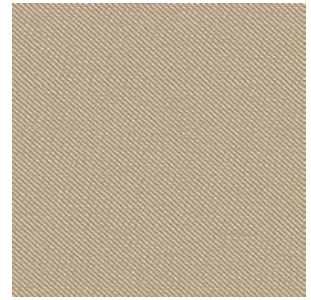
018 Gray  
018 Grigio



109 Ash  
109 Cenere



102 Rust  
102 Ruggine



114 Beige  
114 Beige



004 Cotto  
004 Cooked

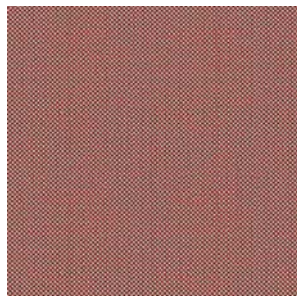


006 Water  
006 Acqua

Fabric B: Damie



429.090



429.058



429.110



429.011



429.031

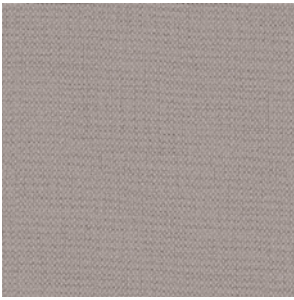


429.032

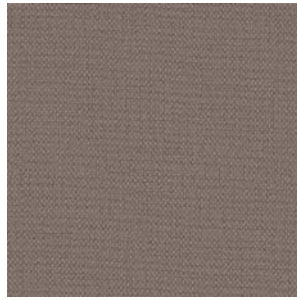


429.052

Fabric B: Guatemala



Grey  
Grigio



Cork  
Sughero



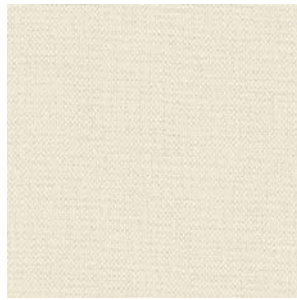
Beaver  
Castoro



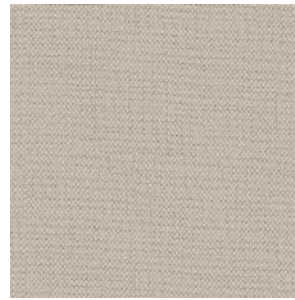
Board  
Lavagna



Lead  
Piombo

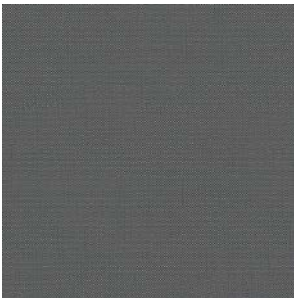


White  
Bianco



Ecrú  
Ecrú

Fabric B: Penelope



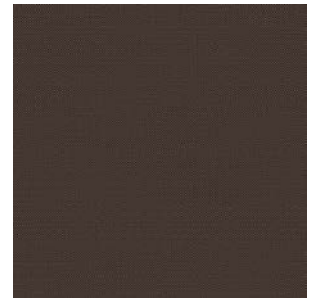
1722



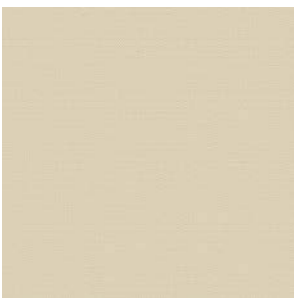
1724



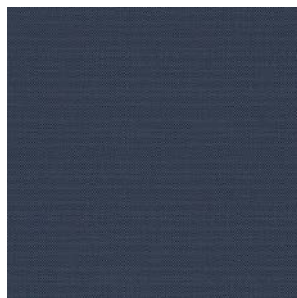
1760



1762



1700



1779



1705

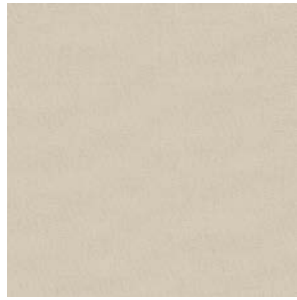


1710

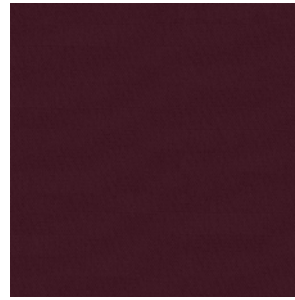
Fabric B: Hermoso



24



01



05



07



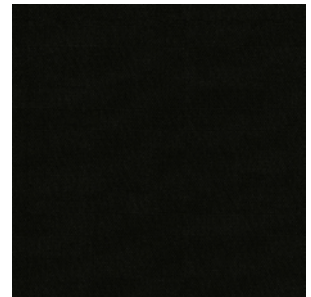
08



09



10



11



17

Fabric C.O.M.

Fabric/Mt. plain 0.60 Fabric/Mt. repeat 0.70

Fabric/Mt. plain 0.60 Fabric/Mt. repeat 0.70

To verify the available fabrics please consult the dedicated table "Combination models-fabrics pattern".

Per verificare i tessuti disponibili si prega di consultare la tabella dedicata "Schema abbinamento prodotti-tessuti".