



Nivola

Armchair/Sofa - Poltrona/Divano
Design - Roberto Lazzeroni



Linee semplici e precise per una seduta compatta e dal design leggero. Un'allure femminile, quasi romantica, valorizzata dai materiali caldi e naturali, lavorati con maestria da Poltrona Frau.

CARATTERISTICHE TECNICHE

Struttura schienale. Poliuretano espanso ottenuto da stampo.

Struttura seduta. In faggio stagionato.

Molleggio seduta. Cinghie elastiche.

Imbottitura. Schienale e braccioli: poliuretano espanso e ovatta poliestere. Seduta: poliuretano espanso e feltro pressato.

Cuscino seduta. Disponibile in due versioni:
- "Standard", con imbottitura in piuma d'oca e ovatta poliestere con inserto stabilizzante in poliuretano espanso.
- "Export", con imbottitura in ovatta poliestere e inserto in poliuretano espanso.

Basamento. Costituito da quattro gambe in legno massello di frassino tinto con profilo a sezione triangolare. Distanziali in nylon nero.
Finiture basamento:
- frassino tinto wengè (32)
- frassino tinto moka (61)

Simple and precise lines for a seat with a compact and light design. A female, almost romantic allure enhanced by warm and natural materials, expertly crafted by Poltrona Frau.

TECHNICAL FEATURES

Backrest structure. Moulded polyurethane foam.

Seat structure. Seasoned beech wood.

Seat suspension. Elastic belts.

Padding. Backrest and armrests: padded with polyurethane foam and polyester wadding. Seat: padded with polyurethane foam and pressed felt.

Seat cushion. Available in two versions:
- "Standard" version, padded with feathers with stabilising insert in polyurethane foam and polyester wadding.
- "Export" version, padded with polyester wadding and a polyurethane foam insert.

Base. Four solid ash wood legs with a triangular cross section. Black nylon spacers.
Base finishes:
- Ash in a wengè stain (32)
- Ash in a moka stain (61)

Rivestimento. Interamente in Pelle Frau® (SC e Nest anche bicolore)** o nelle opzioni che abbinano più materiali. Il primo rivestimento viene applicato alla scocca esterna mentre il secondo alla superficie interna e seduta.

- ColorSphere® (SC) / ColorSphere® (SC)**
- ColorSphere® (SC) / Fabric A
- ColorSphere® (SC) / Fabric B
- ColorSphere® (SC) / C.O.M.
- Nest / Nest**
- Nest / Fabric A
- Nest / Fabric B
- Nest / C.O.M.
- Saddle Extra / ColorSphere® (SC)
- Saddle Extra / Nest
- Saddle Extra / Soul
- Saddle Extra / Century
- Saddle Extra / Fabric A
- Saddle Extra / Fabric B
- Saddle Extra / C.O.M.

Per verificare i tessuti disponibili si prega di consultare la tabella dedicata "Schema abbinamento prodotti-tessuti".

****N.B.** L'opzione bicolore prevede una maggiorazione del 5% rispetto al prezzo della categoria Pelle.

C.O.M. (Fabric/Mt. plain - Fabric/Mt. repeat)

Poltrona: 3.40mt - 4.10mt
Divano 2 posti: 6.30mt - 7.60mt

Sfoderabilità. Non prevista.

Dettagli estetici. L'accostamento dei materiali è esaltato dalle preziose cuciture a vista eseguite con filo tono su tono.

Upholstery. Fully upholstered in Pelle Frau® leather (SC and Nest also in a two-colour version)** or in a combination of two materials. The first upholstery mentioned below is applied to the external shell while the second one is used for the internal surface and the seat.

- ColorSphere® (SC) / ColorSphere® (SC)**
- ColorSphere® (SC) / Fabric A
- ColorSphere® (SC) / Fabric B
- ColorSphere® (SC) / C.O.M.
- Nest / Nest**
- Nest / Fabric A
- Nest / Fabric B
- Nest / C.O.M.
- Saddle Extra / ColorSphere® (SC)
- Saddle Extra / Nest
- Saddle Extra / Soul
- Saddle Extra / Century
- Saddle Extra / Fabric A
- Saddle Extra / Fabric B
- Saddle Extra / C.O.M.

To verify the available fabrics please consult the dedicated table "Combination models-fabrics pattern".

****Please Note:** The two color version provides a surcharge of 5% above the price of Leather category.

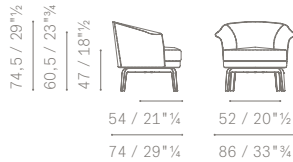
C.O.M. (Fabric/Mt. plain - Fabric/Mt. repeat)

Armchair: 3.40mt - 4.10mt
2 seater sofa: 6.30mt - 7.60mt

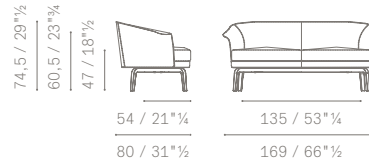
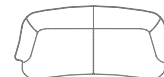
Removability. Not possible.

Aesthetic details. The combination of different materials is enhanced by the precious visible stitching with Tone-on-tone thread.

5576111



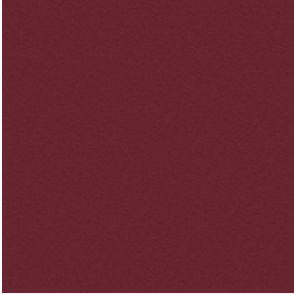
5576211



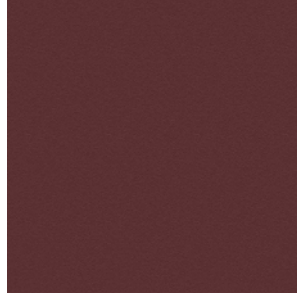
Upholstery | Pelle Frau® leather:

Rivestimento | In Pelle Frau®:

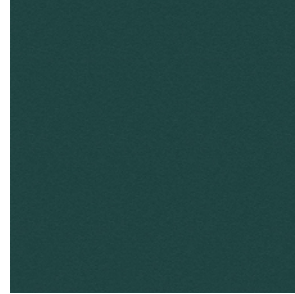
Pelle Frau® Colorsphere



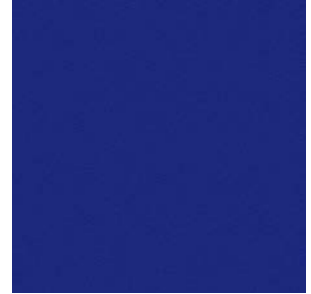
SC 92 Garnet
SC 92 Granato



SC 93 Paperback
SC 93 Brossura



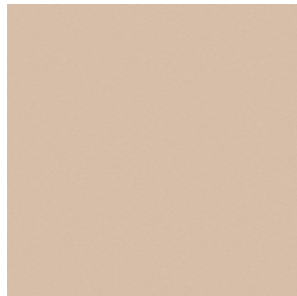
SC 187 Wild
SC 187 Selva



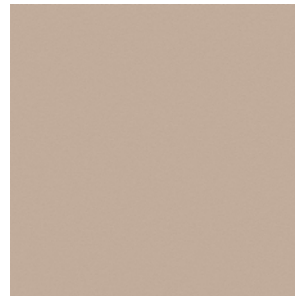
SC 248 Iris
SC 248 Iris



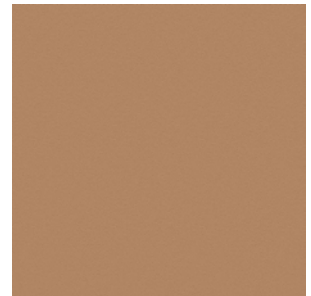
SC 255 Pretty Woman
SC 255 Belladonna



SC 42 Make-Up
SC 42 Maquillage



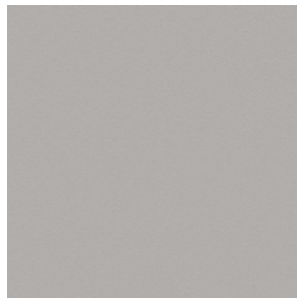
SC 44 Hazelnut
SC 44 Noisette



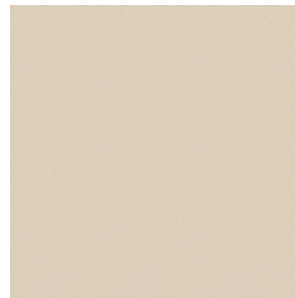
SC 56 Cowhide
SC 56 Vachette



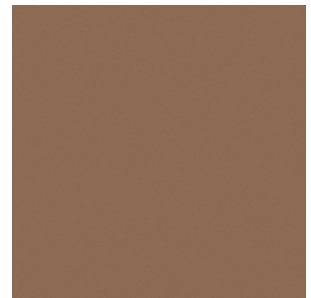
SC 128 Red Carmine
SC 128 Carminio Rosso



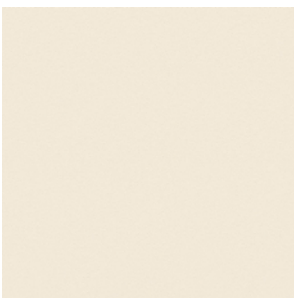
SC 23 Dove
SC 23 Tortora



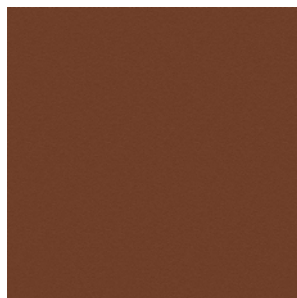
SC 51 Cream
SC 51 Panna



SC 56 Siena
SC 56 Siena



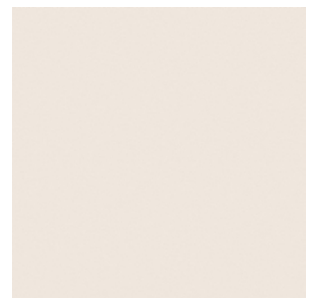
SC 01 Ivory
SC 01 Avorio



SC 67 Cloves
SC 67 Chiodi di Garofano



SC 99 Carob
SC 99 Carrubo



SC 06 Calicot
SC 06 Calicot



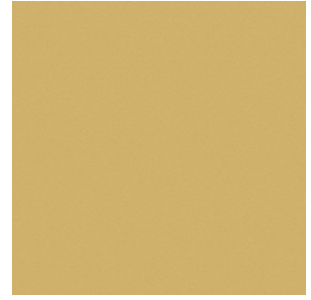
SC 120 Calypso
SC 120 Calypso



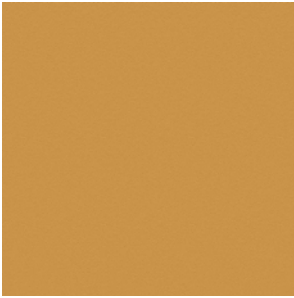
SC 250 Vermillion
SC 250 Vermillion



SC 274 Fresh Blue
SC 274 Fresco Blue



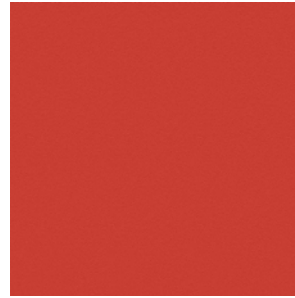
SC 133 Straw
SC 133 Paglierino



SC 136 Ginger Bread
SC 133 Pan Di Zenzero



SC 140 Mimosa
SC 140 Mimosa



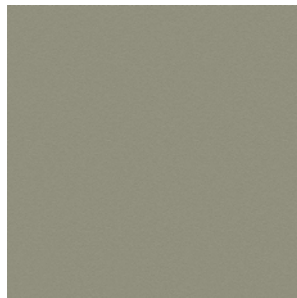
SC 146 Roof Pesto
SC 146 Coccio Pesto



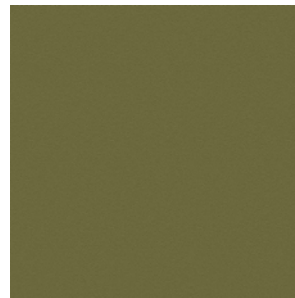
SC 10 Anthracite
SC 10 Antracite



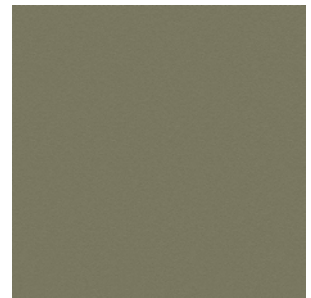
SC 148 Lacquer
SC 148 Lacca



SC 173 Glaucus
SC 173 Glauco



SC 175 Bengali Green
SC 175 Verde Bengali



SC 176 Dock
SC 176 Darsena



SC 177 Silt
SC 177 Limo



SC 178 Alps
SC 178 Alpi



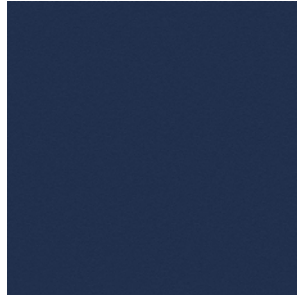
SC 179 Heath
SC 179 Brughiera



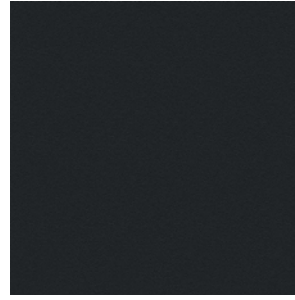
SC 209 Cypress
SC 209 Cipresso



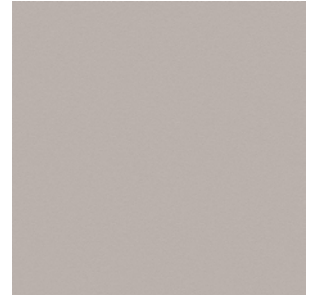
SC 256 Ume
SC 256 Ume



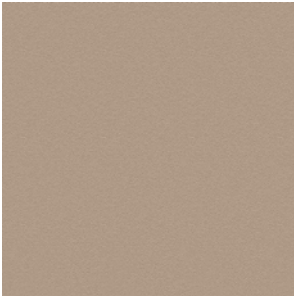
SC 278 Atlantic Blue
SC 278 Blu Atlantico



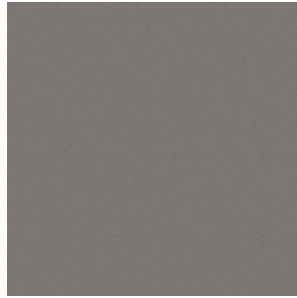
SC 20 Ink
SC 20 Inchiostro



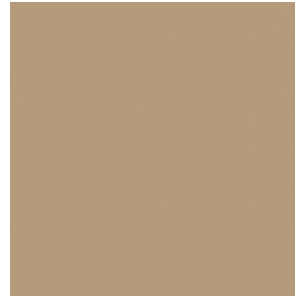
SC 31 Smoky Quartz
SC 31 Quarzo Fume



SC 33 Travertine
SC 33 Travertino



SC 26 Mouse
SC 26 Topo



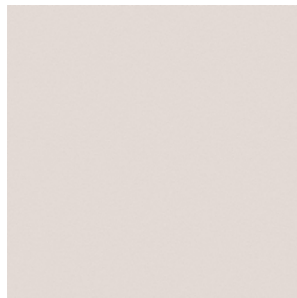
SC 52 Buck
SC 52 Daino



SC 66 India
SC 66 India



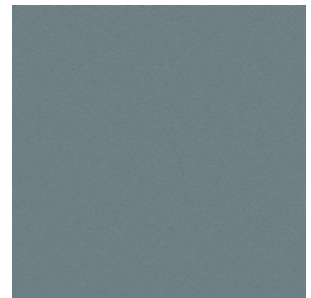
SC 74 Hazelnut
SC 74 Nocciola



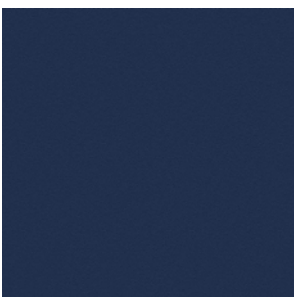
SC 05 Stucco
SC 05 Stucco



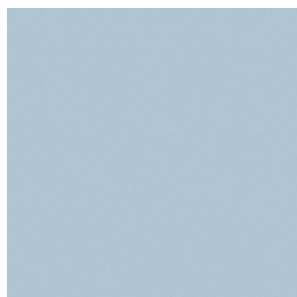
SC 188 Vidrian
SC 188 Vidriana



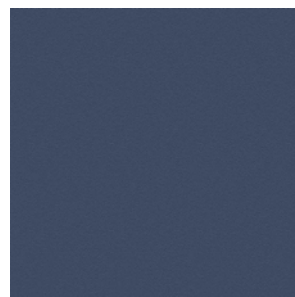
SC 254 Steel Blue
SC 254 Blu Acciaio



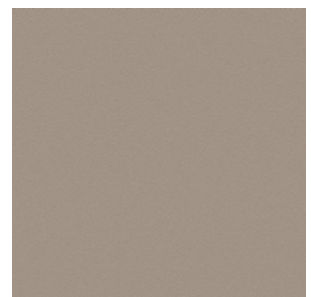
SC 258 Mist
SC 258 Nebbia



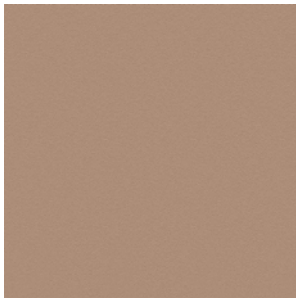
SC 233 Bardiglio
SC 233 Bardiglio



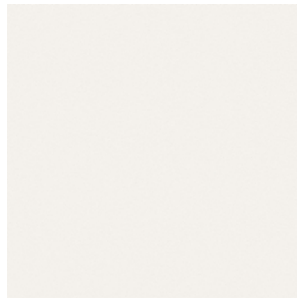
SC 279 Alchemy
SC 279 Alchimia



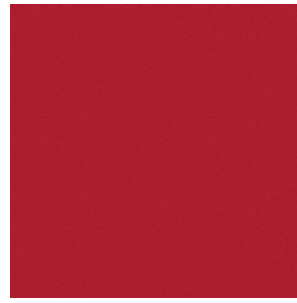
SC 34 Fallow
SC 34 Maggese



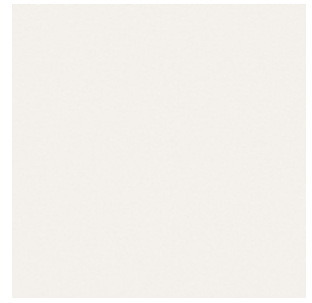
SC 46 Biscuit
SC 46 Biscotto



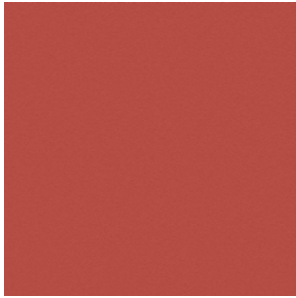
SC 0 Polar
SC 0 Polare



SC 127 Siam
SC 127 Siam



SC 28 Seppia
SC 28 Seppia



SC 96 Brick
SC 96 Mattone



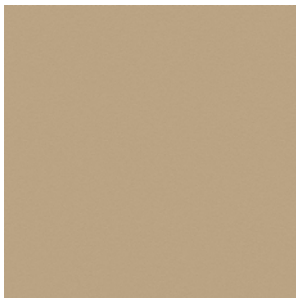
SC 80 Bruno L'avana
SC 80 Bruno Havana



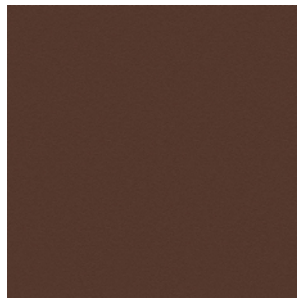
SC 48 Tonka
SC 48 Tonka



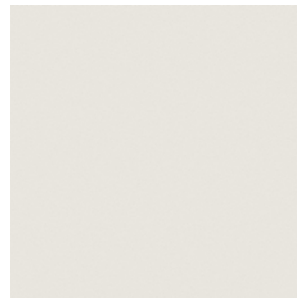
SC 55 Caramel Hair
SC 55 Capelli Caramello



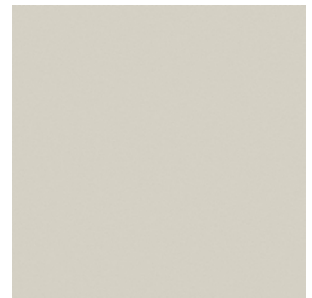
SC 53 Crete
SC 53 Creta



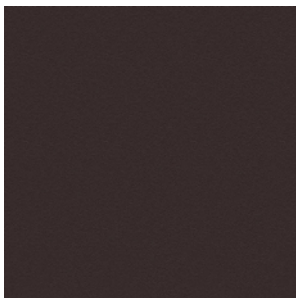
SC 59 Pecan Nut
SC 59 Noce di Pecan



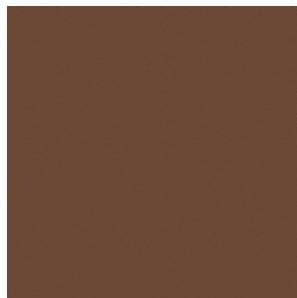
SC 04 White Milk
SC 04 Latte Bianco



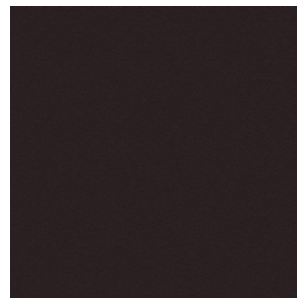
SC 21 Asbestos
SC 21 Amianto



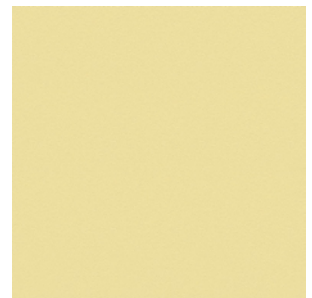
SC 29 Slate
SC 29 Ardesia



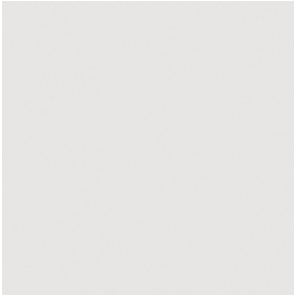
SC 57 Peat
SC 57 Torba



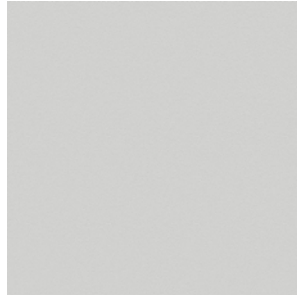
SC 100 Fondant
SC 100 Fondant



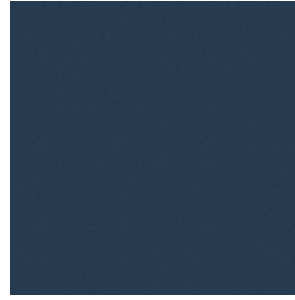
SC 132 Eggshell
SC 132 Guscio D'uovo



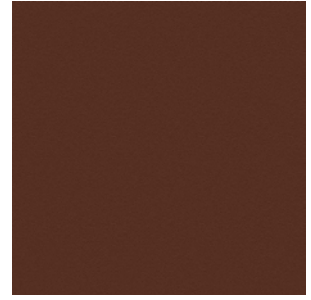
SC 19 Georgette
SC 19 Georgetta



SC 22 Chiffon
SC 22 Chiffon



SC 276 Mineral Blue
SC 276 Blu Minerale



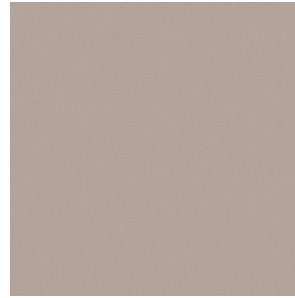
SC 69 Brown Iroko
SC 69 Iroko Marrone



SC 280 Abyss
SC 280 Abisso



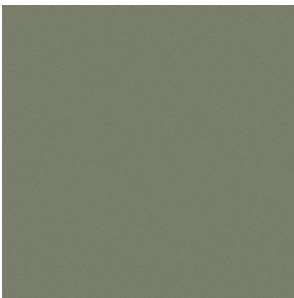
SC 32 Kaolin
SC 32 Caolino



SC 40 Cachmire
SC 40 Cachemire

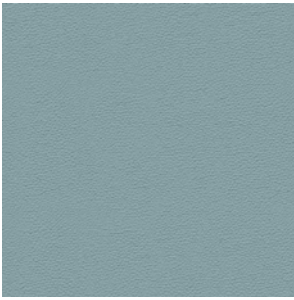


SC 68 Sahara Brown
SC 68 Sahara Marrone

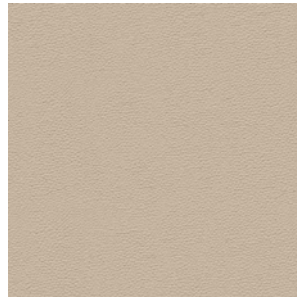


SC 180 Celadon
SC 180 Celadon

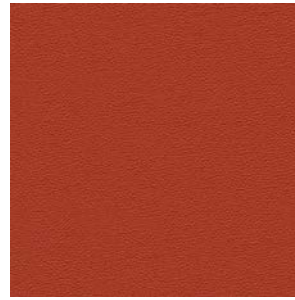
Pelle Frau® Nest



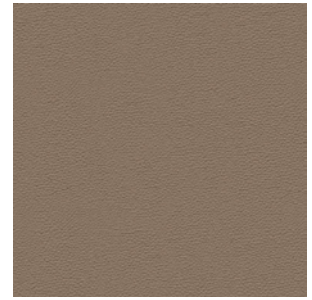
Chalcedony
Calcedonio



Mother Of Pearl
Madreperla



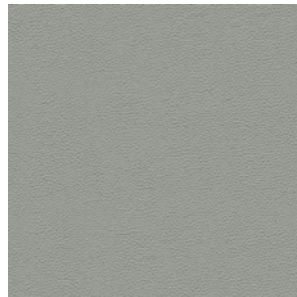
Mars
Marte



Sandstone
Arenaria



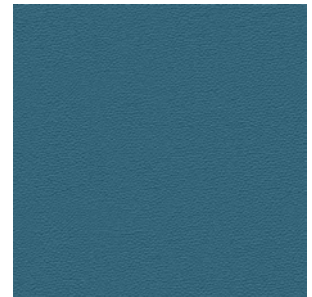
Amber
Ambra



Concrete
Cemento



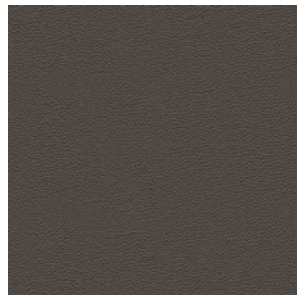
Moon
Luna



Blue
Azul



Clay
Argilla



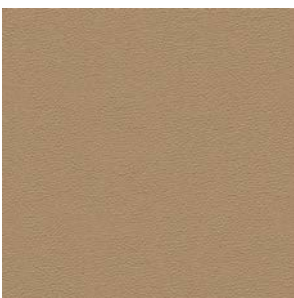
Graphite
Grafite



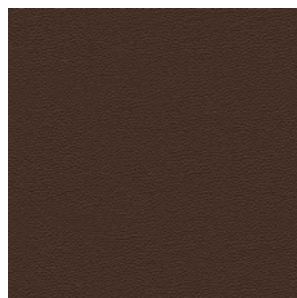
Malachite
Malachite



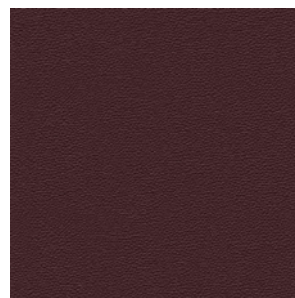
Silica
Silice



Tuff
Tufo



Ammonite
Ammonite

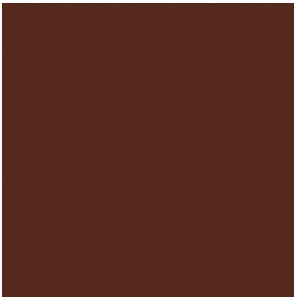


Garnet
Granato



Larimar
Larimar

Pelle Frau® Soul



Diana



Joe



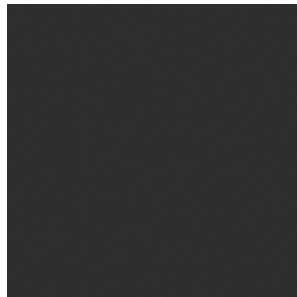
Amy



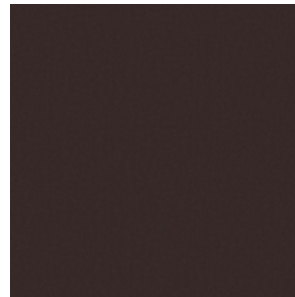
Whitney



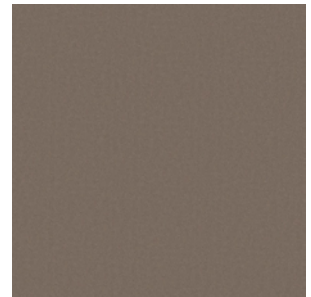
Nina



Otis



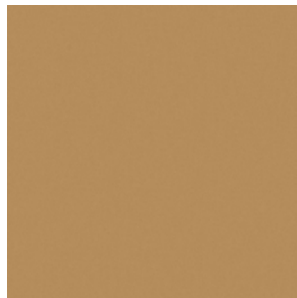
Ray



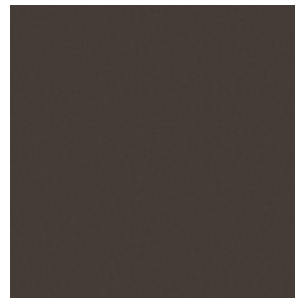
Smokey



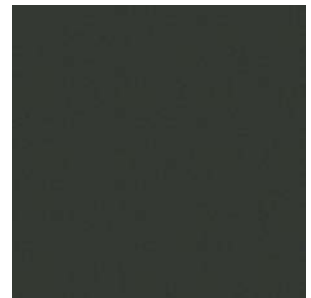
Wilson



Anita

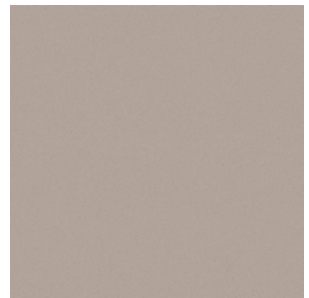
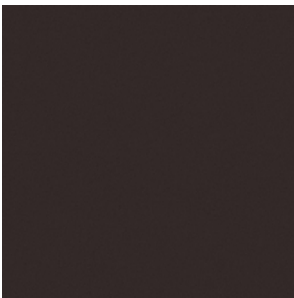
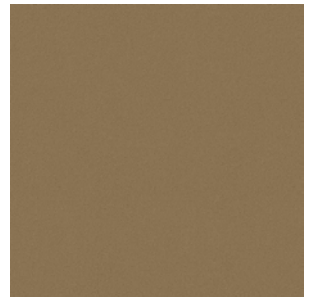
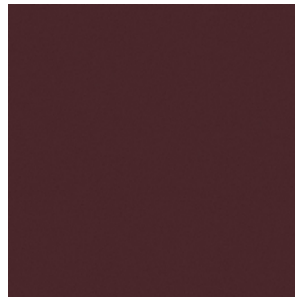
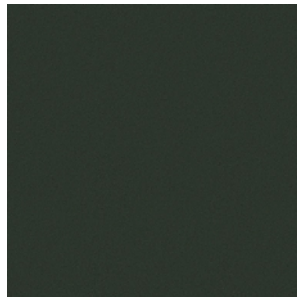
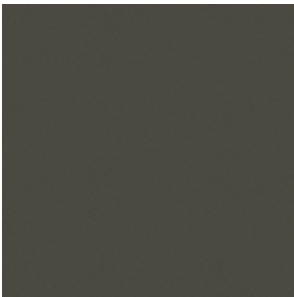
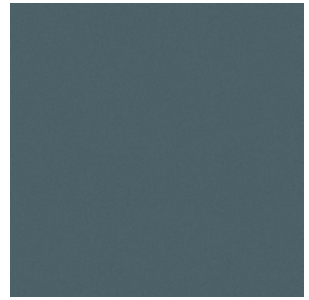
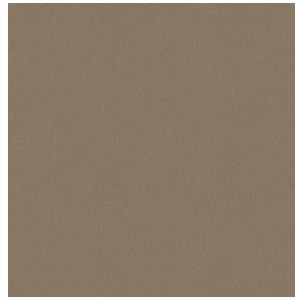
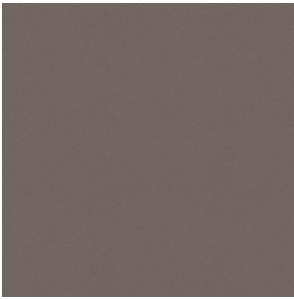


Dusty

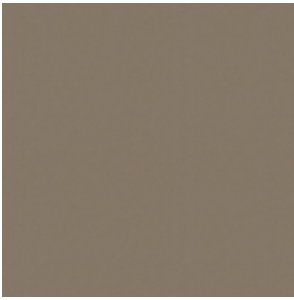


Stevie

Pelle Frau® Century



Saddle Extra



Mole
Talpa



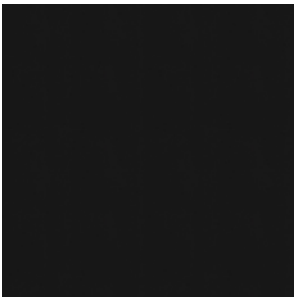
Dark Brown
Testa di Moro



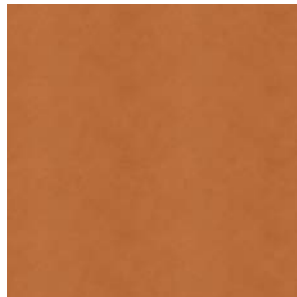
Rope
Corda



Dust
Polvere



Coal
Carbone



Camel
Cammello

Upholstery | Fabric:
Rivestimento | Tessuto:

Fabric A: Giano



9 Light
9 Chiaro



7 Dark
7 Scuro



9 Dark
9 Scuro



3 Light
3 Chiaro

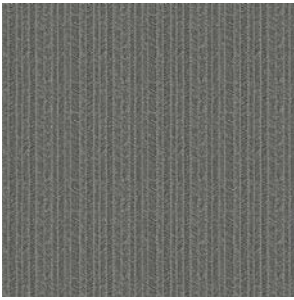


7 Light
7 Chiaro

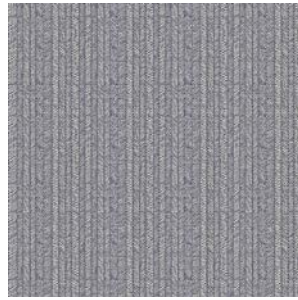


3 Dark
3 Scuro

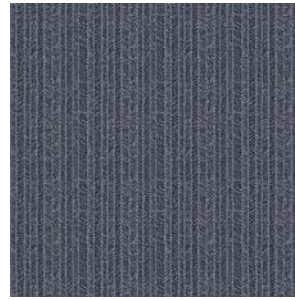
Fabric A: Nouveau



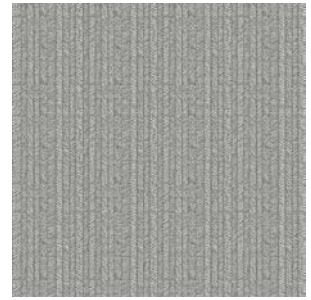
10 Dark
10 Scuro



13 Light
13 Chiaro



13 Dark
13 Scuro



10 Light
10 Chiaro



03

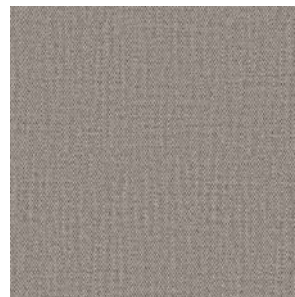
Fabric A: Paltò



White 01
Bianco 01

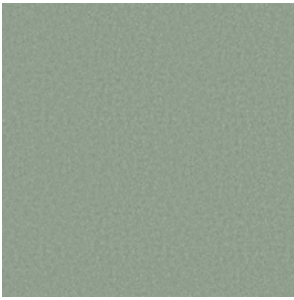


Moor's head 10
Testa di Moro 10



Mouse 13
Topo 13

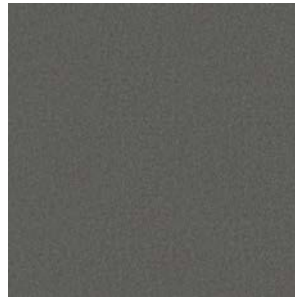
Fabric B: Barkley



Lichen
Lichene



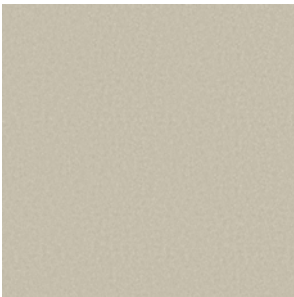
Moor's Head
Testa di Moro



Mouse
Topo



Avio
Avio

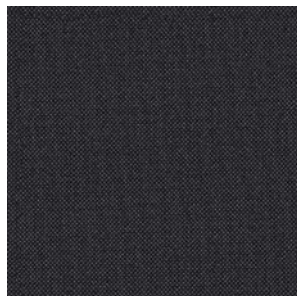


Pearl
Perla

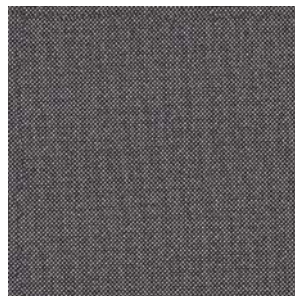
Fabric B: Bouclè



104



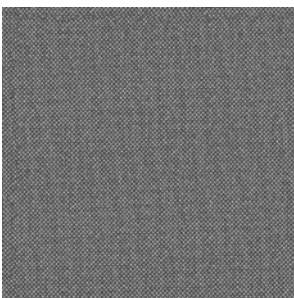
103



105



101

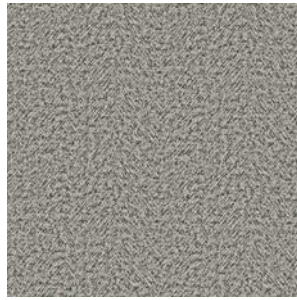


102

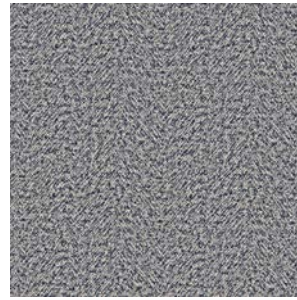
Fabric B: Scottish



20

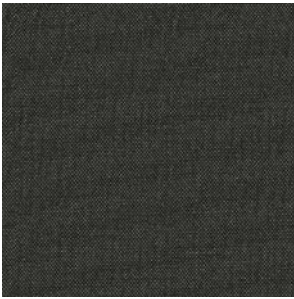


33



31

Fabric B: Shine



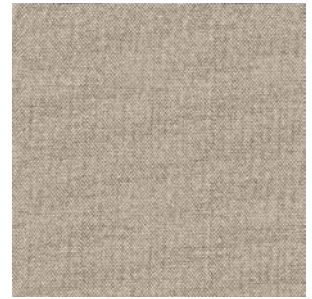
Forest
Foresta



Silver
Argento



Starry blue
Blu stellato

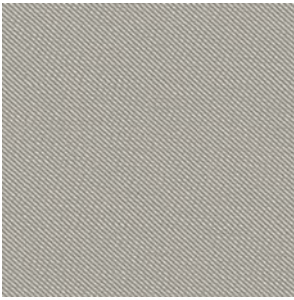


Beige
Beige

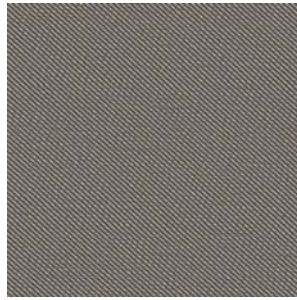


Black iris
Iris nero

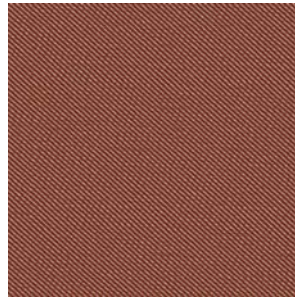
Fabric B: Twill



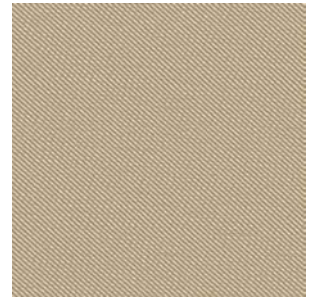
018 Gray
018 Grigio



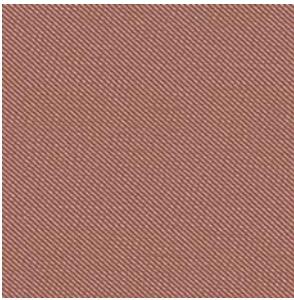
109 Ash
109 Cenere



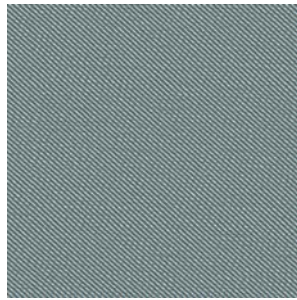
102 Rust
102 Ruggine



114 Beige
114 Beige



004 Cotto
004 Cooked

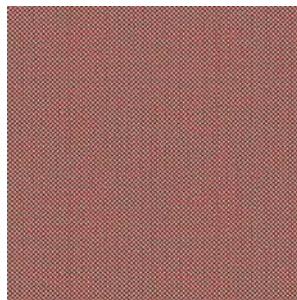


006 Water
006 Acqua

Fabric B: Damie



429.090



429.058



429.110



429.011



429.031

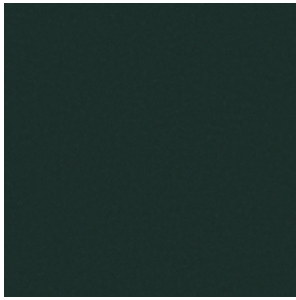


429.032

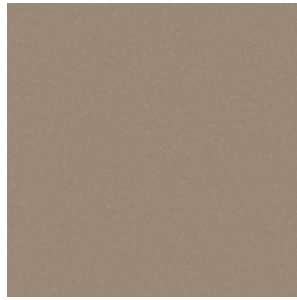


429.052

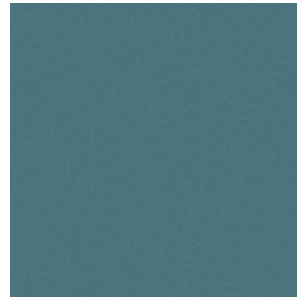
Fabric B: Vega



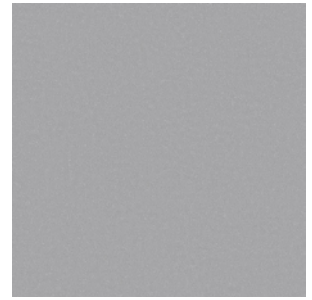
303



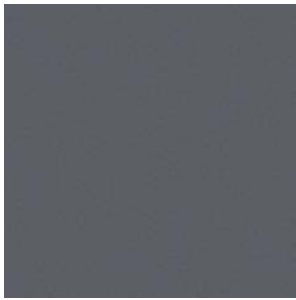
103



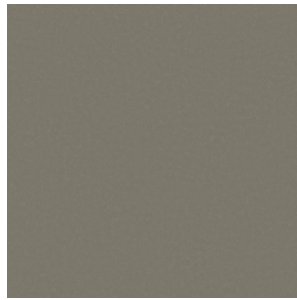
126



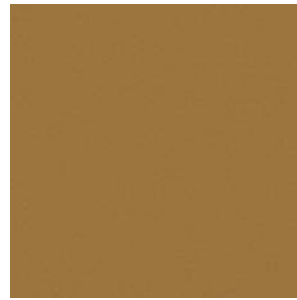
129



133



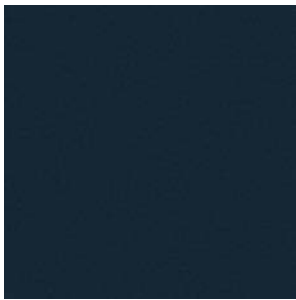
300



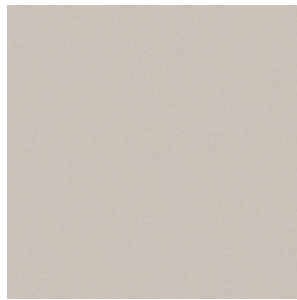
302



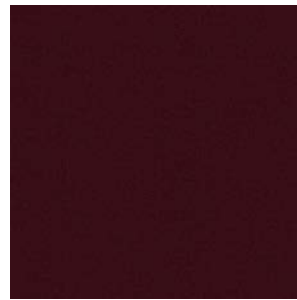
135



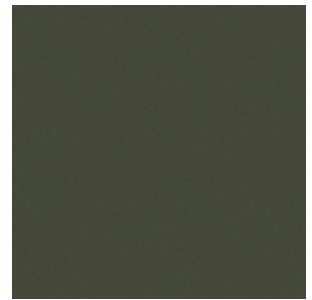
137



144

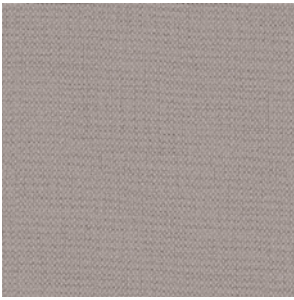


139

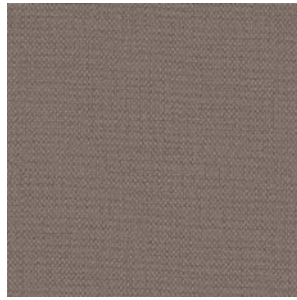


301

Fabric B: Guatemala



Grey
Grigio



Cork
Sughero



Beaver
Castoro



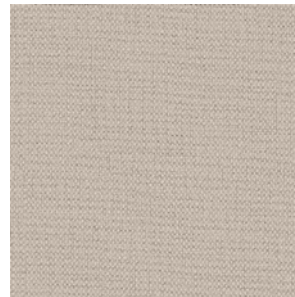
Board
Lavagna



Lead
Piombo



White
Bianco

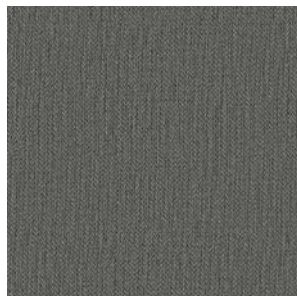


Ecu
Ecu

Fabric B: Milano



05



10

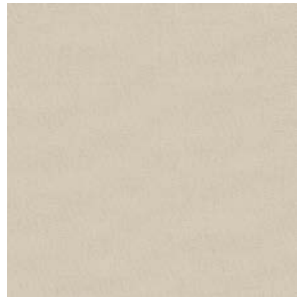


03

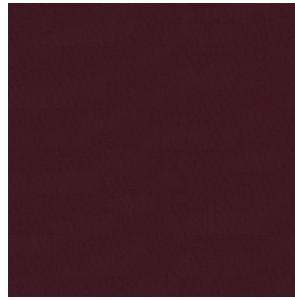
Fabric B: Hermoso



24



01



05



07



08



09



10

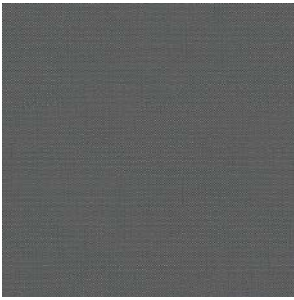


11

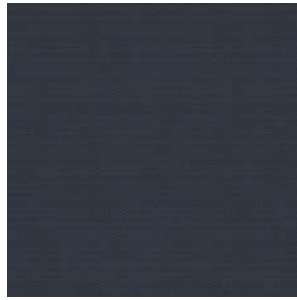


17

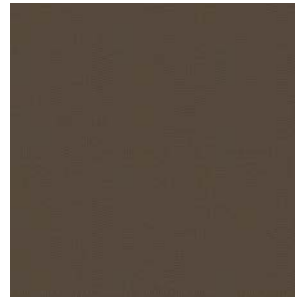
Fabric B: Penelope



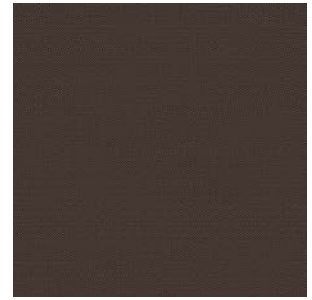
1722



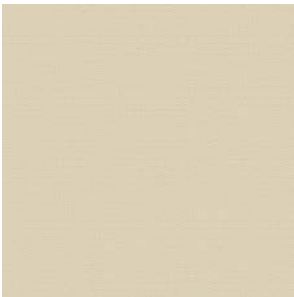
1724



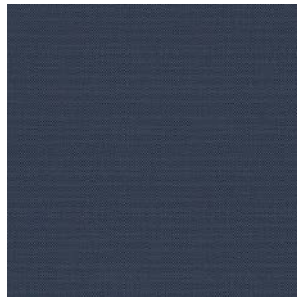
1760



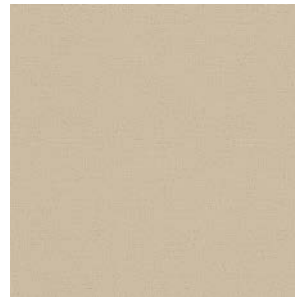
1762



1700



1779



1705



1710

Fabric C.O.M.

Fabric/Mt. plain 0.60 Fabric/Mt. repeat 0.70

Fabric/Mt. plain 0.60 Fabric/Mt. repeat 0.70

To verify the available fabrics please consult the dedicated table "Combination models-fabrics pattern".

Per verificare i tessuti disponibili si prega di consultare la tabella dedicata "Schema abbinamento prodotti-tessuti".