



Nice

Chair - Sedia
Design - GamFratesi



Una poltroncina da tavolo dalla forte presenza nella sala da pranzo. Nice, disegnata da GamFratesi, mostra un volume compatto dalla forma organica e avvolgente. E' costituita dai due gusci dello schienale e della scocca che si flettono e sovrappongono come due fogli piegati, assicurando comfort e sostegno al corpo. Nel sovrapporsi, i due elementi creano un vuoto nella parte posteriore dello schienale che diviene un segno riconoscibile.

CARATTERISTICHE TECNICHE

Scocca. In materiale plastico ottenuta da stampo.

Imbottitura. In poliuretano espanso ottenuto da stampo.

Base. Formata da 4 gambe a cavalletto unico in pressofusione di alluminio, disponibile nelle finiture:

- verniciato Brunito
- verniciato Titanio

La sedia è fornita con puntali dotati di estremità intercambiabili a seconda della durezza del pavimento

Rivestimento. Realizzato interamente in Pelle Frau® o in Tessuto o nelle opzioni che abbinano più materiali, pelle o tessuto per l'interno della seduta (schienale e sedile) e cuoio Saddle Extra per la scocca esterna.

- ColorSphere® (SC) (anche bicolore**)
- Nest (anche bicolore**)
- Soul
- Fabric A
- Fabric B
- Fabric C
- C.O.M.
- Saddle Extra / ColorSphere® (SC)
- Saddle Extra / Nest
- Saddle Extra / Soul
- Saddle Extra / Fabric A
- Saddle Extra / Fabric B
- Saddle Extra / Fabric C
- Saddle Extra / C.O.M.

**N.B. L'opzione bicolore prevede una maggiorazione del 5% rispetto al prezzo della categoria pelle.

Sfoderabilità. Non prevista.

A small table armchair with a strong prominence in the lunchroom. Nice, designed by GamFratesi, exhibits a compact volume, with an organic and enveloping shape. It consists of the two cases of the backrest and the seat shell that flex and overlap like two folded sheets, ensuring comfort and support for the body. As they overlap, the two elements create a void in the rear part of the backrest, which becomes a recognisable sign.

TECHNICAL FEATURES

Seat shell. Moulded plastic.

Padding. Moulded polyurethane foam.

Base. Made up of 4 single trestle legs in die-cast aluminium, available in the finishes:

- burnished painted aluminium
- titanium painted aluminium

The chair is supplied with tips that have interchangeable ends according to the hardness of the floor.

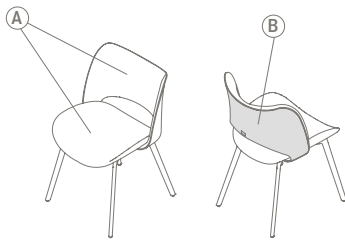
Upholstery. Made entirely in Pelle Frau® leather or in Fabric, or in the options that combine several materials, leather or fabric for the inside of the seat (back and seat) and Saddle Extra saddle-leather for the external seat shell.

- ColorSphere® (SC) (also two-tone**)
- Nest (also two-tone**)
- Soul
- Fabric A
- Fabric B
- Fabric C
- C.O.M.
- Saddle Extra / ColorSphere® (SC)
- Saddle Extra / Nest
- Saddle Extra / Soul
- Saddle Extra / Fabric A
- Saddle Extra / Fabric B
- Saddle Extra / Fabric C
- Saddle Extra / C.O.M.

Please Note: The two-tone option includes a surcharge of 5% above the price of the leather category.

Removability. Not possible.

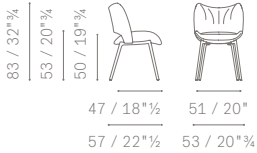
REGOLE APPLICAZIONE RIVESTIMENTI / UPHOLSTERY APPLICATION RULES



Ⓐ PELLE FRAU® - FABRIC - C.O.M.
Superficie interna della seduta (sedile + schienale)
Seat internal surface (seat + backrest)

Ⓑ SADDLE EXTRA - PELLE FRAU® - FABRIC - C.O.M.
Scocca esterna dello schienale
External backrest shell

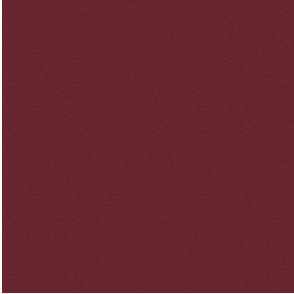
5680001



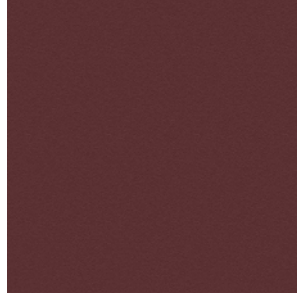
Upholstery | Pelle Frau® leather:

Rivestimento | In Pelle Frau®:

Pelle Frau® Colorsphere**



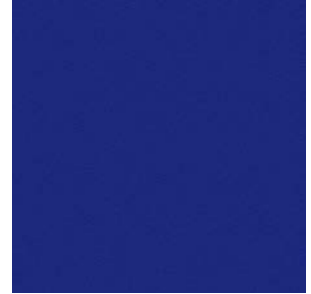
SC 92 Garnet
SC 92 Granato



SC 93 Paperback
SC 93 Brossura



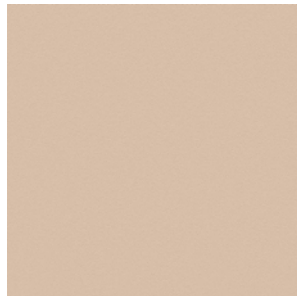
SC 187 Wild
SC 187 Selva



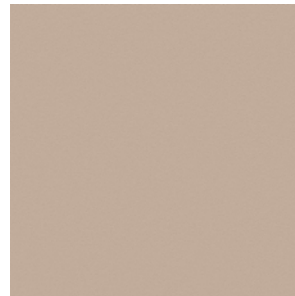
SC 248 Iris
SC 248 Iris



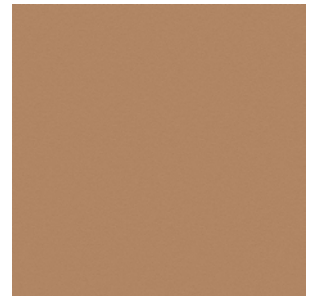
SC 255 Pretty Woman
SC 255 Belladonna



SC 42 Make-Up
SC 42 Maquillage



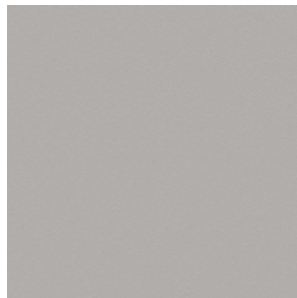
SC 44 Hazelnut
SC 44 Noisette



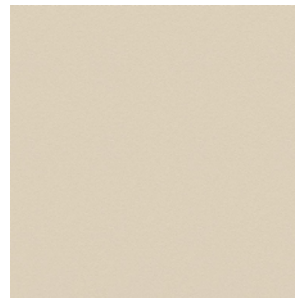
SC 56 Cowhide
SC 56 Vachette



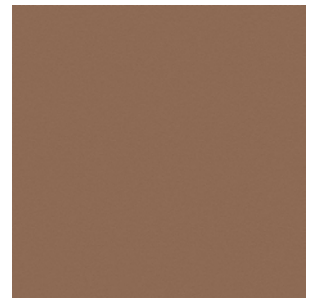
SC 128 Red Carmine
SC 128 Carminio Rosso



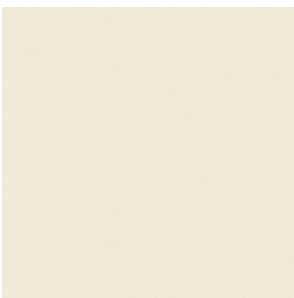
SC 23 Dove
SC 23 Tortora



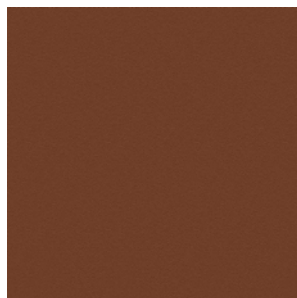
SC 51 Cream
SC 51 Panna



SC 56 Siena
SC 56 Siena



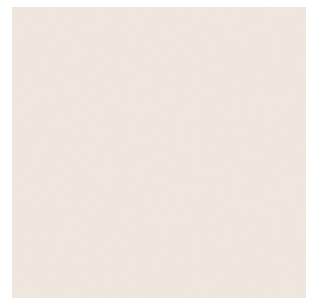
SC 01 Ivory
SC 01 Avorio



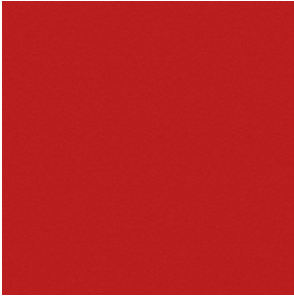
SC 67 Cloves
SC 67 Chiodi di Garofano



SC 99 Carob
SC 99 Carrubo



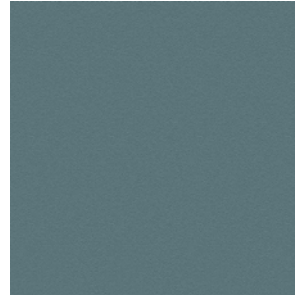
SC 06 Calicot
SC 06 Calicot



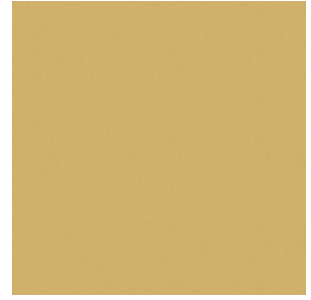
SC 120 Calypso
SC 120 Calypso



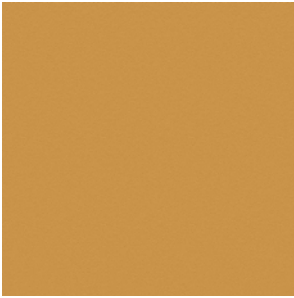
SC 250 Vermillion
SC 250 Vermillion



SC 274 Fresh Blue
SC 274 Fresco Blue



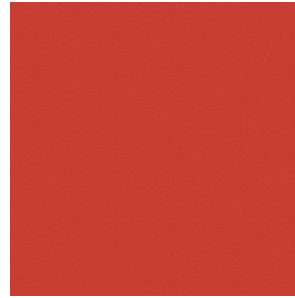
SC 133 Straw
SC 133 Paglierino



SC 136 Ginger Bread
SC 133 Pan Di Zenzero



SC 140 Mimosa
SC 140 Mimosa



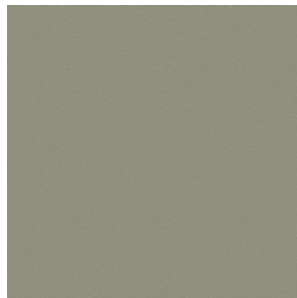
SC 146 Roof Pesto
SC 146 Coccio Pesto



SC 10 Anthracite
SC 10 Antracite



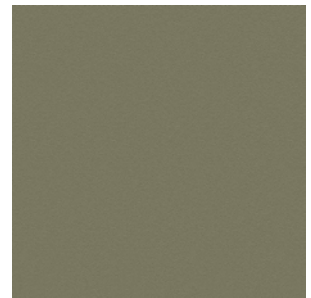
SC 148 Lacquer
SC 148 Lacca



SC 173 Glaucus
SC 173 Glauco



SC 175 Bengali Green
SC 175 Verde Bengali



SC 176 Dock
SC 176 Darsena



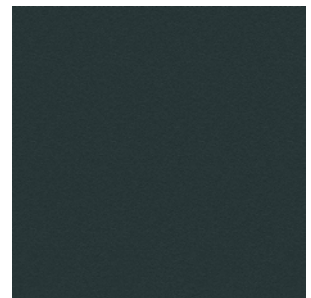
SC 177 Silt
SC 177 Limo



SC 178 Alps
SC 178 Alpi



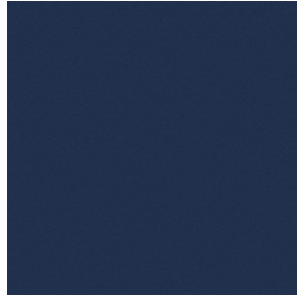
SC 179 Heath
SC 179 Brughiera



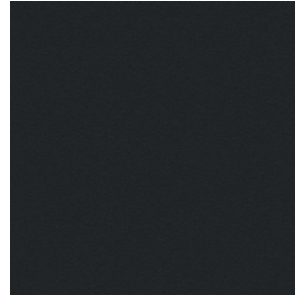
SC 209 Cypress
SC 209 Cipresso



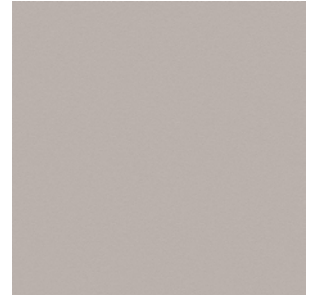
SC 256 Ume
SC 256 Ume



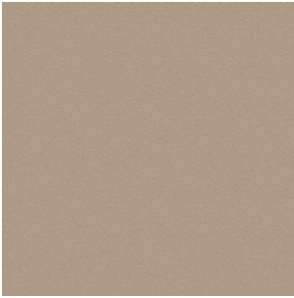
SC 278 Atlantic Blue
SC 278 Blu Atlantico



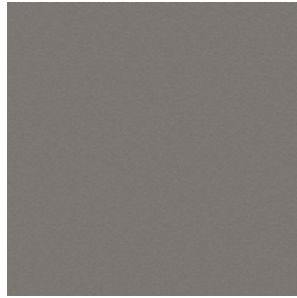
SC 20 Ink
SC 20 Inchiostro



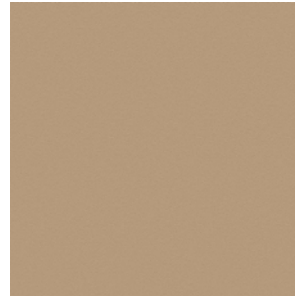
SC 31 Smoky Quartz
SC 31 Quarzo Fume



SC 33 Travertine
SC 33 Travertino



SC 26 Mouse
SC 26 Topo



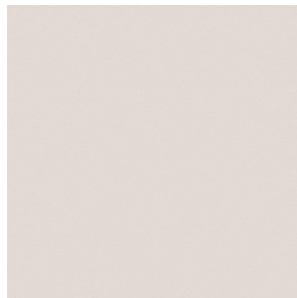
SC 52 Buck
SC 52 Daino



SC 66 India
SC 66 India



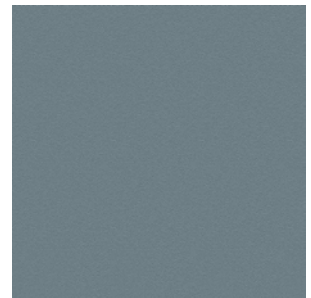
SC 74 Hazelnut
SC 74 Nocciola



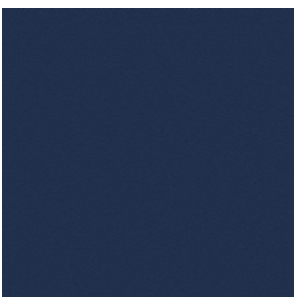
SC 05 Stucco
SC 05 Stucco



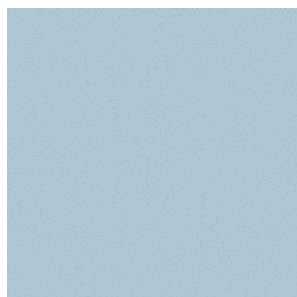
SC 188 Vidrian
SC 188 Vidriana



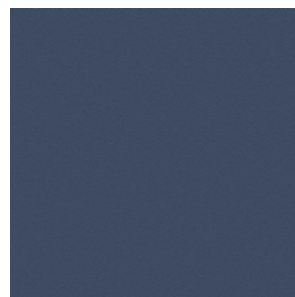
SC 254 Steel Blue
SC 254 Blu Acciaio



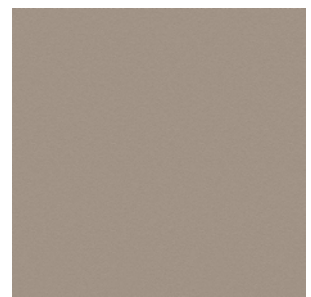
SC 258 Mist
SC 258 Nebbia



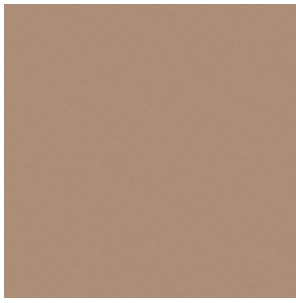
SC 233 Bardiglio
SC 233 Bardiglio



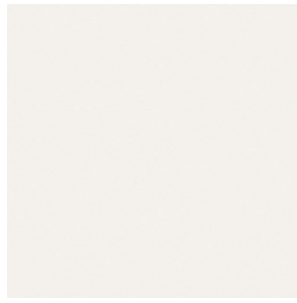
SC 279 Alchemy
SC 279 Alchimia



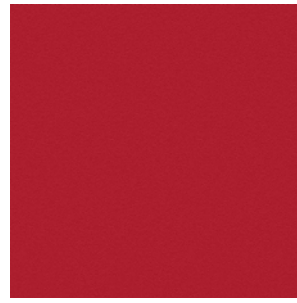
SC 34 Fallow
SC 34 Maggese



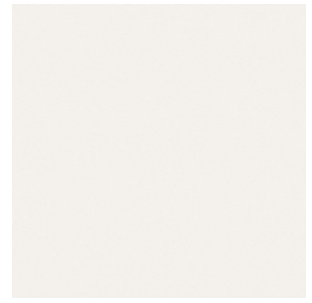
SC 46 Biscuit
SC 46 Biscotto



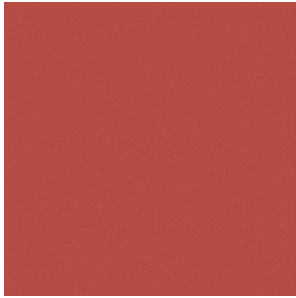
SC 0 Polar
SC 0 Polare



SC 127 Siam
SC 127 Siam



SC 28 Seppia
SC 28 Seppia



SC 96 Brick
SC 96 Mattone



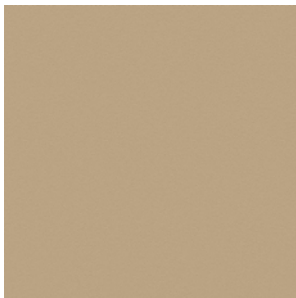
SC 80 Bruno L'avana
SC 80 Bruno Havana



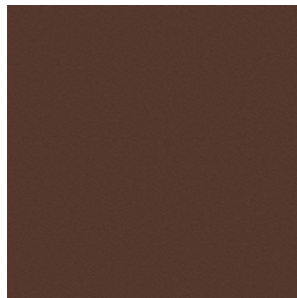
SC 48 Tonka
SC 48 Tonka



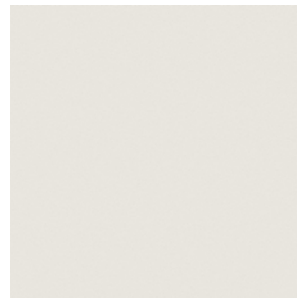
SC 55 Caramel Hair
SC 55 Capelli Caramello



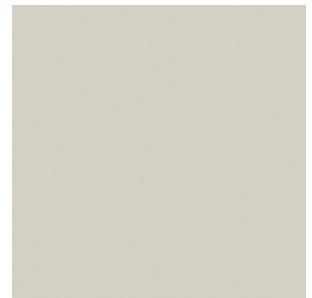
SC 53 Crete
SC 53 Creta



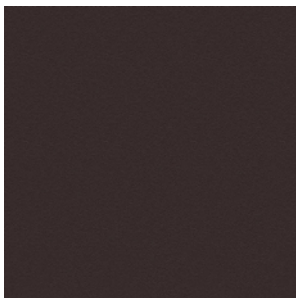
SC 59 Pecan Nut
SC 59 Noce di Pecan



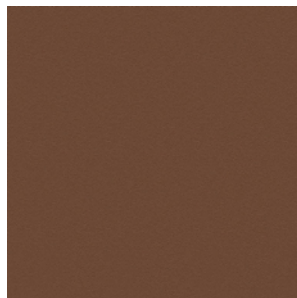
SC 04 White Milk
SC 04 Latte Bianco



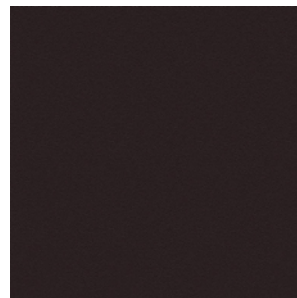
SC 21 Asbestos
SC 21 Amianto



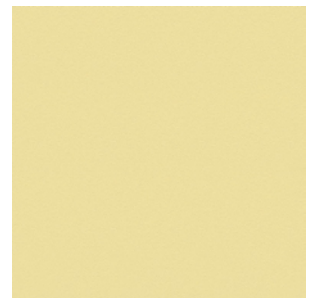
SC 29 Slate
SC 29 Ardesia



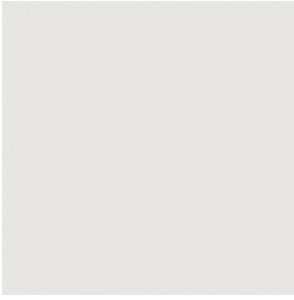
SC 57 Peat
SC 57 Torba



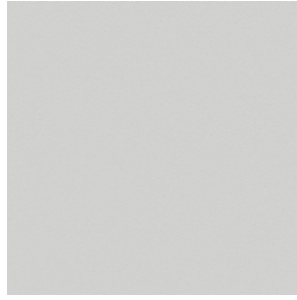
SC 100 Fondant
SC 100 Fondant



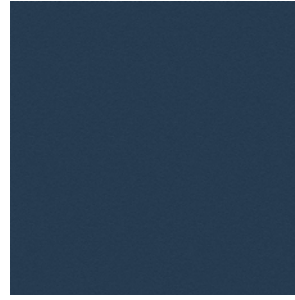
SC 132 Eggshell
SC 132 Guscio D'uovo



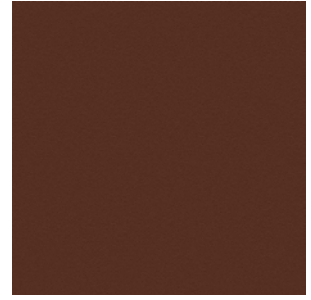
SC 19 Georgette
SC 19 Georgetta



SC 22 Chiffon
SC 22 Chiffon



SC 276 Mineral Blue
SC 276 Blu Minerale



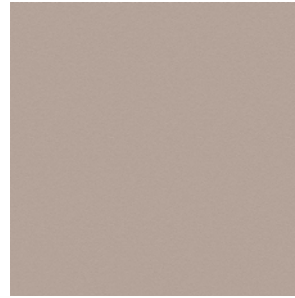
SC 69 Brown Iroko
SC 69 Iroko Marrone



SC 280 Abyss
SC 280 Abisso



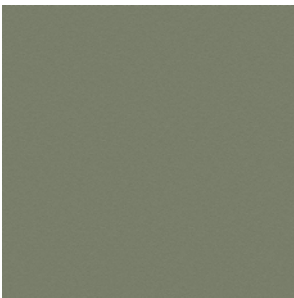
SC 32 Kaolin
SC 32 Caolino



SC 40 Cachmire
SC 40 Cachemire

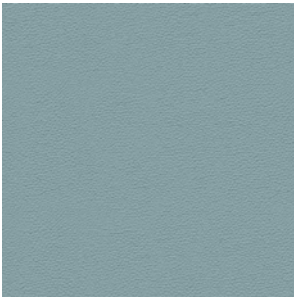


SC 68 Sahara Brown
SC 68 Sahara Marrone

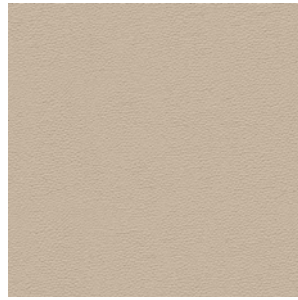


SC 180 Celadon
SC 180 Celadon

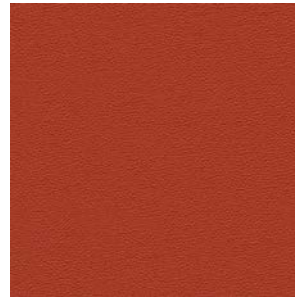
Pelle Frau® Nest**



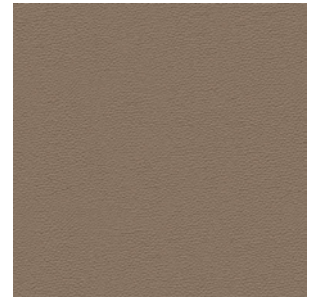
Chalcedony
Calcedonio



Mother Of Pearl
Madreperla



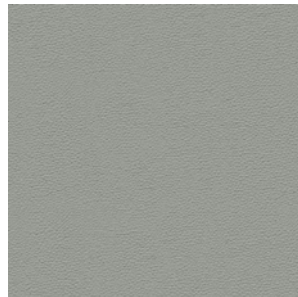
Mars
Marte



Sandstone
Arenaria



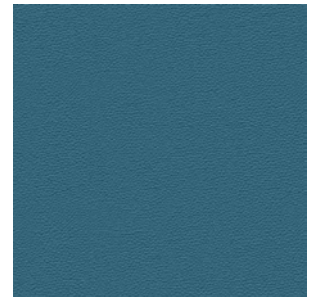
Amber
Ambra



Concrete
Cemento



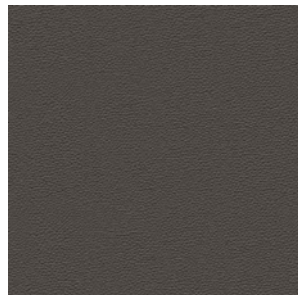
Moon
Luna



Blue
Azul



Clay
Argilla



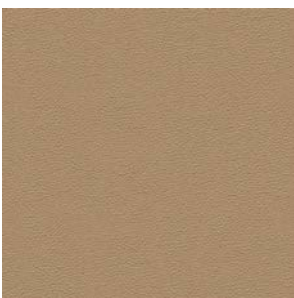
Graphite
Grafite



Malachite
Malachite



Silica
Silice



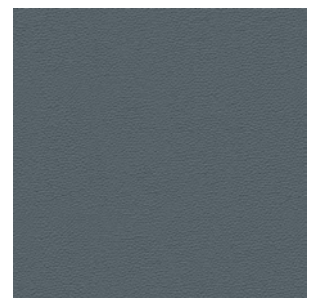
Tuff
Tufo



Ammonite
Ammonite

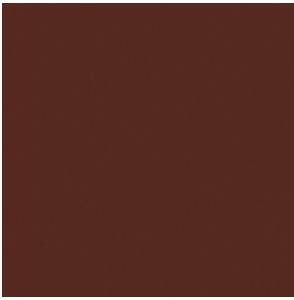


Garnet
Granato



Larimar
Larimar

Pelle Frau® Soul



Diana



Joe



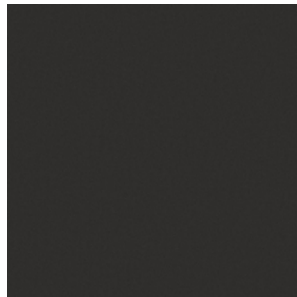
Amy



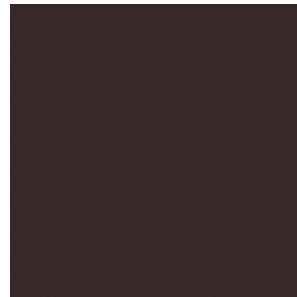
Whitney



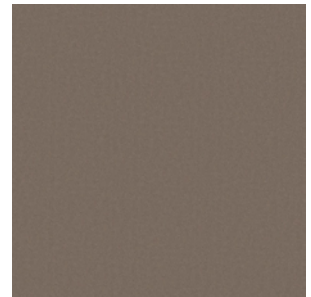
Nina



Otis



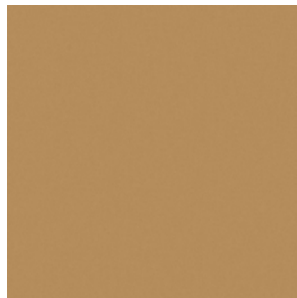
Ray



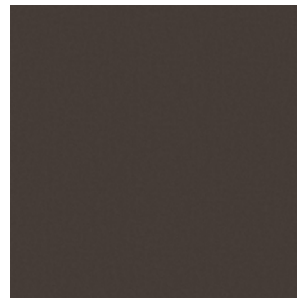
Smokey



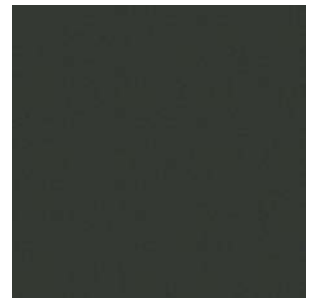
Wilson



Anita

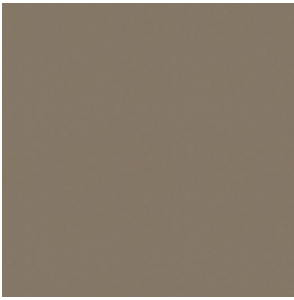


Dusty



Stevie

Saddle Extra



Mole
Talpa



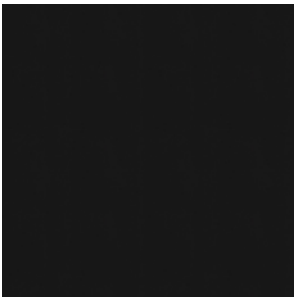
Dark Brown
Testa di Moro



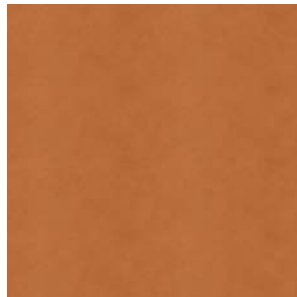
Rope
Corda



Dust
Polvere



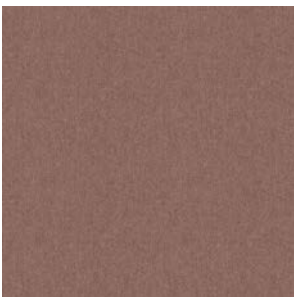
Coal
Carbone



Camel
Cammello

Upholstery | Fabric:
Rivestimento | Tessuto:

Fabric A: Giano



9 Light
9 Chiaro



7 Dark
7 Scuro



9 Dark
9 Scuro



3 Light
3 Chiaro

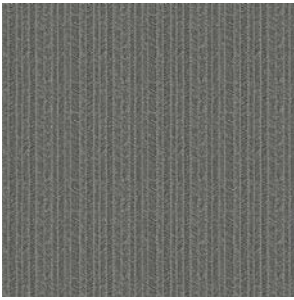


7 Light
7 Chiaro

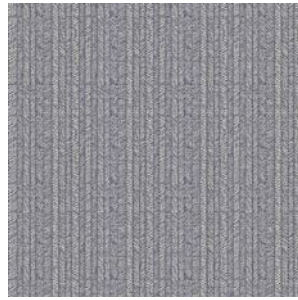


3 Dark
3 Scuro

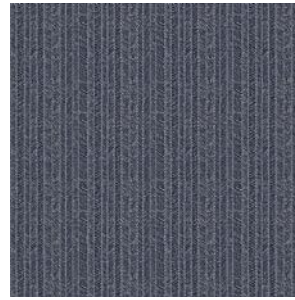
Fabric A: Nouveau



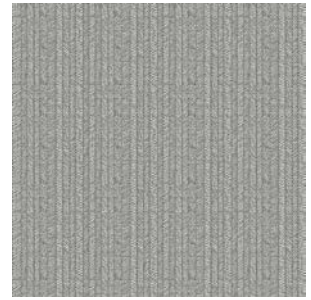
10 Dark
10 Scuro



13 Light
13 Chiaro



13 Dark
13 Scuro



10 Light
10 Chiaro

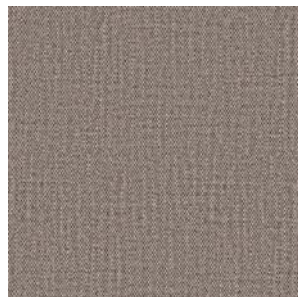


03

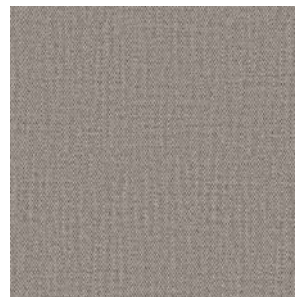
Fabric A: Paltò



White 01
Bianco 01

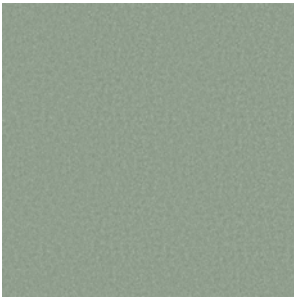


Moor's head 10
Testa di Moro 10



Mouse 13
Topo 13

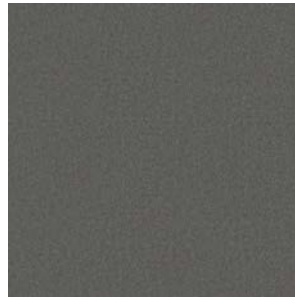
Fabric B: Barkley



Lichen
Lichene



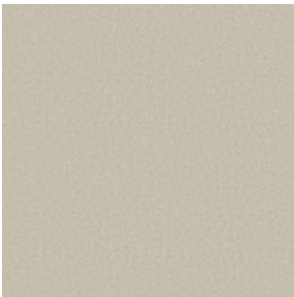
Moor's Head
Testa di Moro



Mouse
Topo



Avio
Avio

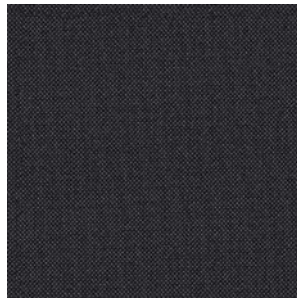


Pearl
Perla

Fabric B: Bouclè



104



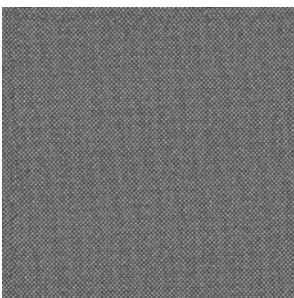
103



105



101

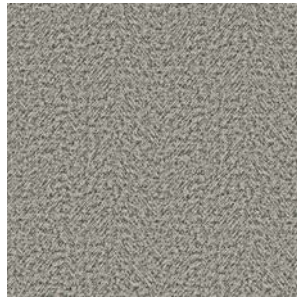


102

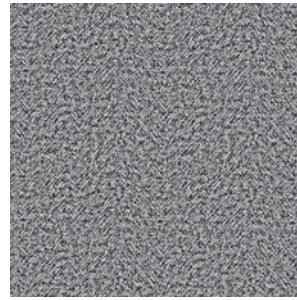
Fabric B: Scottish



20

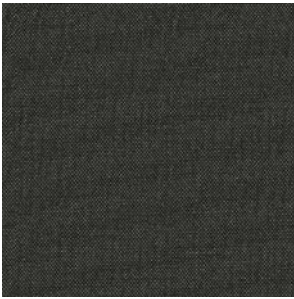


33



31

Fabric B: Shine



Forest
Foresta



Silver
Argento



Starry blue
Blu stellato

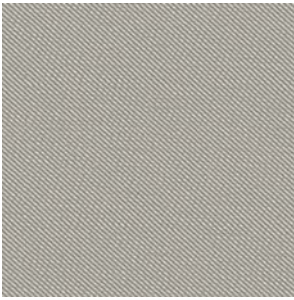


Beige
Beige

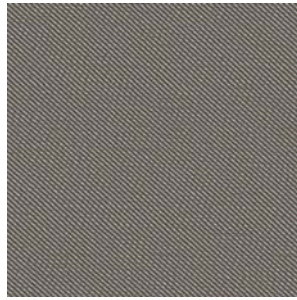


Black iris
Iris nero

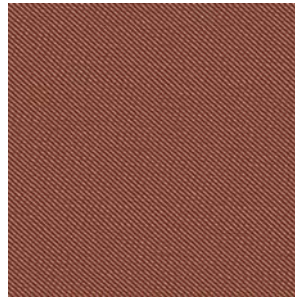
Fabric B: Twill



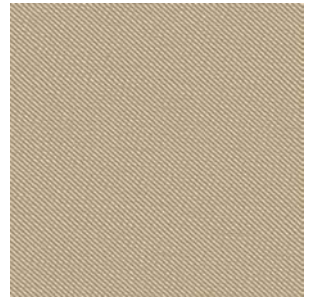
018 Gray
018 Grigio



109 Ash
109 Cenere



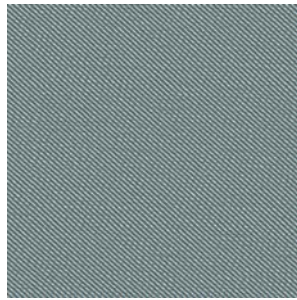
102 Rust
102 Ruggine



114 Beige
114 Beige



004 Cotto
004 Cooked

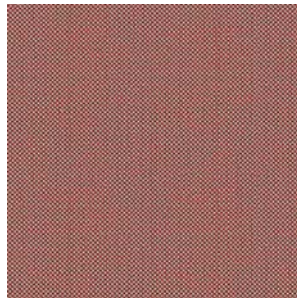


006 Water
006 Acqua

Fabric B: Damie



429.090



429.058



429.110



429.011



429.031

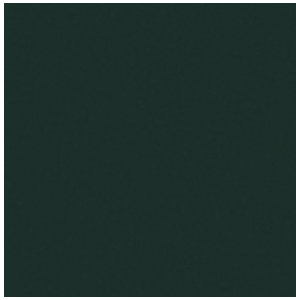


429.032

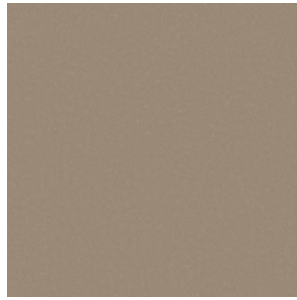


429.052

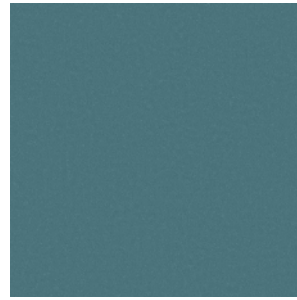
Fabric B: Vega



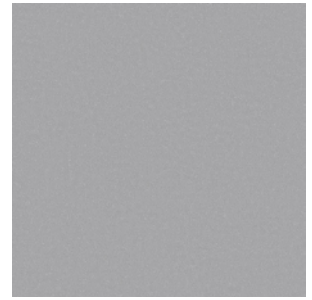
303



103



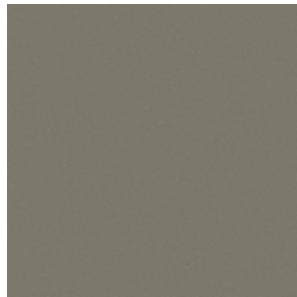
126



129



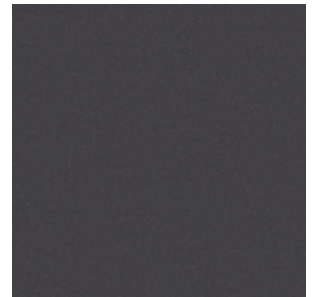
133



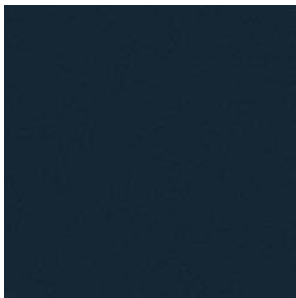
300



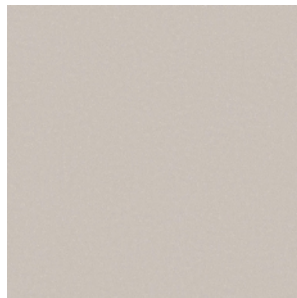
302



135



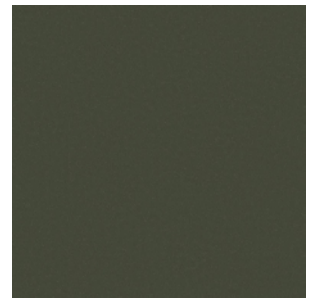
137



144

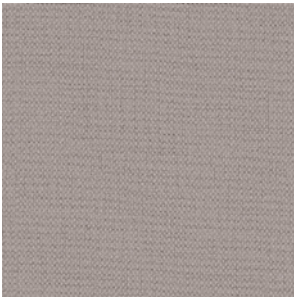


139

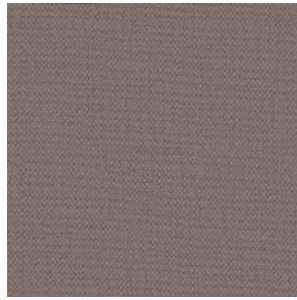


301

Fabric B: Guatemala



Grey
Grigio



Cork
Sughero



Beaver
Castoro



Board
Lavagna



Lead
Piombo



White
Bianco

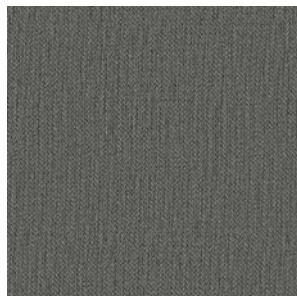


Ecu
Ecu

Fabric B: Milano



05



10

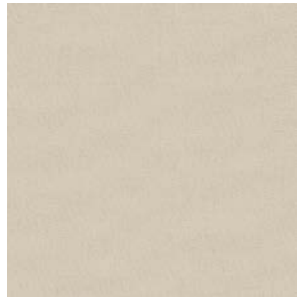


03

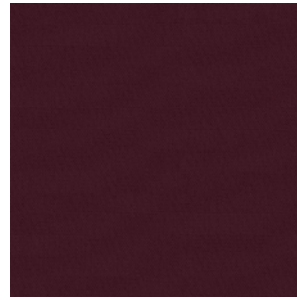
Fabric B: Hermoso



24



01



05



07



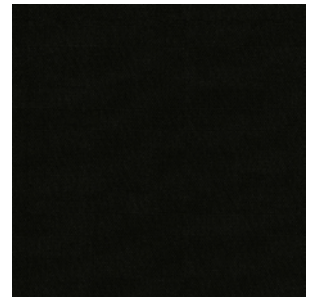
08



09



10

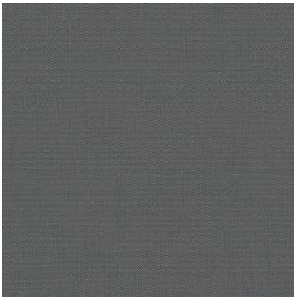


11

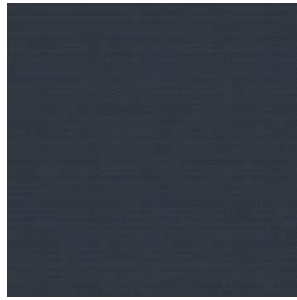


17

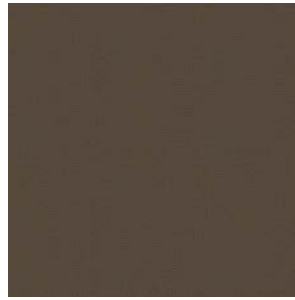
Fabric B: Penelope



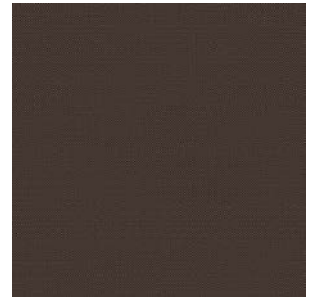
1722



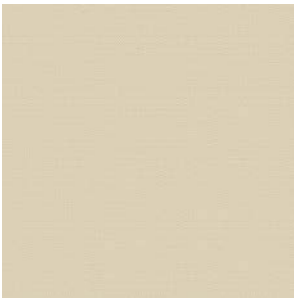
1724



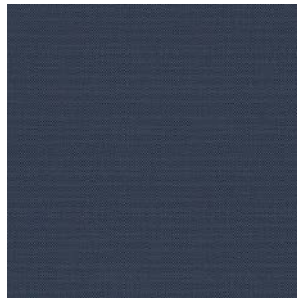
1760



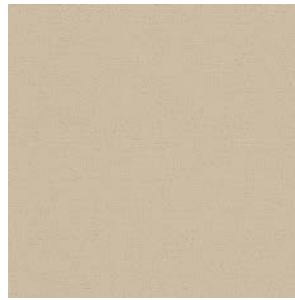
1762



1700



1779

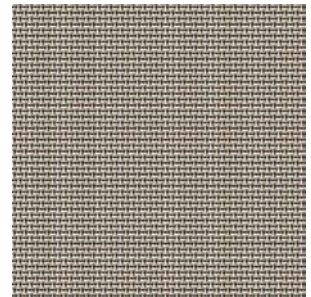
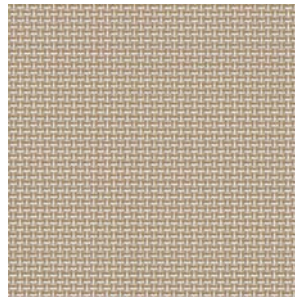
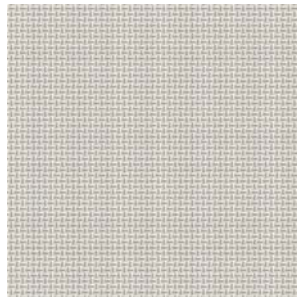
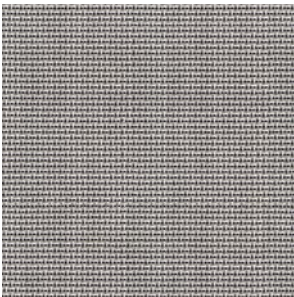


1705



1710

Fabric C: Re-Stijl



Fabric C.O.M.

Fabric/Mt. plain 0.60 Fabric/Mt. repeat 0.70

Fabric/Mt. plain 0.60 Fabric/Mt. repeat 0.70

To verify the available fabrics please consult the dedicated table "Combination models-fabrics pattern".

Per verificare i tessuti disponibili si prega di consultare la tabella dedicata "Schema abbinamento prodotti-tessuti".