



Mamy Blue

Armchair - Poltrona
Design - Roberto Lazzeroni



Mamy Blue, progettata per il relax e la lettura, è una poltrona per sognare e meditare. Le forme rotonde e scattanti evocano un design dinamico e sofisticato che Lazzeroni valorizza grazie a un utilizzo sapiente dei materiali.

CARATTERISTICHE TECNICHE

Scocca schienale. Poliuretano espanso ottenuto da stampo.

Struttura seduta. Faggio stagionato.

Molleggio. Molle biconiche in acciaio legate a mano e fissate a cinghie di juta.

Cuscino seduta. In poliuretano espanso ottenuto da stampo.

Basamento. A quattro piedi, realizzato in legno massello di frassino in due finiture con supporto di aggancio alla scocca in acciaio verniciato nero. Nella versione girevole la base dispone di un meccanismo che ne permette la rotazione di 37° in senso orario e antiorario e il ritorno automatico alla posizione iniziale.

Finiture basamento. Disponibile in:
- frassino tinto wengé (32)
- frassino tinto moka (61)

Struttura pouf. In faggio stagionato e multistrato di betulla.

Imbottitura pouf. In poliuretano espanso ottenuto da stampo.

Basamento pouf. Realizzato in multistrato di betulla verniciato nero testurizzato. Puntali di protezione in materiale plastico.

Designed for relaxation and reading. Its round and agile forms recall dynamic and sophisticated designs that Lazzeroni enhanced with an expert use of materials.

TECHNICAL FEATURES

Backrest shell. Moulded polyurethane foam.

Seat structure. Seasoned beech wood.

Suspension. Biconical hand-tied steel springs fastened to jute belts.

Seat cushion. Moulded polyurethane foam.

Base. Four-feet base, made of solid ash available in two finishes with an anchor plate fixing it to the shell in black varnished steel. The swivel version base features a mechanism that enables the armchair to rotate 37° on each side and to return automatically to the starting position.

Base finishes. Available in:
- Ash in a wengé stain (32)
- Ash in a moka stain (61)

Footrest structure. Seasoned beech wood and birch plywood.

Footrest padding. Moulded polyurethane foam.

Footrest base. Birch plywood in a black-textured coating. Protective plastic caps.

Rivestimento. Interamente in Pelle Frau® (anche bicolore) o nelle opzioni che abbinano più materiali. Il primo rivestimento viene applicato alla scocca esterna della poltrona e per la struttura del pouf mentre il secondo alla superficie interna e della seduta della poltrona e alla parte superiore del pouf.

- ColorSphere® (SC) / ColorSphere® (SC)
- ColorSphere® (SC) / Fabric A
- ColorSphere® (SC) / Fabric B
- ColorSphere® (SC) / C.O.M.
- Nest / Nest
- Nest / Fabric A
- Nest / Fabric B
- Nest / C.O.M.
- Saddle Extra / ColorSphere® (SC)
- Saddle Extra / Nest
- Saddle Extra / Soul
- Saddle Extra / Century
- Saddle Extra / Fabric A
- Saddle Extra / Fabric B
- Saddle Extra / C.O.M.
- **cuoio MyFrau / ColorSphere® (SC)**
- **cuoio MyFrau / Nest**
- **cuoio MyFrau / Soul**
- **cuoio MyFrau / Century**
- **cuoio MyFrau / Fabric A**
- **cuoio MyFrau / Fabric B**
- **cuoio MyFrau / C.O.M.**

Per verificare i tessuti disponibili si prega di consultare la tabella dedicata "Schema abbinamento prodotti-tessuti".

N.B. L'opzione bicolore prevede una maggiorazione del 5% rispetto al prezzo della categoria pelle.

Sfoderabilità. Non prevista.

Dettagli estetici. L'accostamento dei materiali è esaltato dalle preziose cuciture a vista, eseguite con filo a contrasto.

N.B. Nel caso del cuoio MyFrau è possibile scegliere il colore del filo per le cuciture.

Cuoio MyFrau. Il cuoio MyFrau ha origine da pelli selezionate di bovini adulti di provenienza europea ed è il risultato della stessa "ricetta di concia" messa a punto per il Saddle Extra. MyFrau è ottenuto attraverso l'impiego di tannini vegetali e ingredienti totalmente ecologici. Il procedimento di tintura avviene completamente a mano e la tonalità del colore sarà differente in funzione della nuance scelta, delle caratteristiche della materia prima e della sensibilità dell'artigiano. Per le sue caratteristiche di colorazione e ceratura, il cuoio MyFrau è "fotosensibile" e può presentare variazioni cromatiche dovute anche al naturale assorbimento della tintura eseguita con tamponatura a mano. Per la sua peculiarità il cuoio MyFrau non può essere esposto a luce diretta o a fonti di calore ed eventuali macchie sono difficilmente rimovibili. Eventuali piccole cicatrici o rugosità testimoniano l'autenticità del materiale e la sua origine naturale.

MyFrau - colori disponibili.

- My Deep Blue
- My Green
- My Dark Grey
- My Purple
- My Dark Brown
- My Gingery
- My Colour - ON DEMAND

Poggiatesta. Optional. Imbottito in poliuretano espanso e piuma d'oca. Non necessita di fissaggio ma va semplicemente appoggiato allo schienale dove può essere posizionato a piacere grazie al contrappeso inserito internamente alla fodera.

Rivestimento poggiatesta.

- ColorSphere® (SC)
- Nest
- Soul
- Century
- Fabric A
- Fabric B
- C.O.M.

Per verificare i tessuti disponibili si prega di consultare la tabella dedicata "Schema abbinamento prodotti-tessuti".

Nella stessa collezione.

Mamy Blue bed

Upholstery. Fully upholstered in Pelle Frau® leather (also in a two-color version) or in a combination of two materials. The first upholstery mentioned below is applied to the external shell of the armchair and to the structure of the ottoman while the second one is used for the internal surface and seat of the armchair and for the upper part of the ottoman.

- ColorSphere® (SC) / ColorSphere® (SC)
- ColorSphere® (SC) / Fabric A
- ColorSphere® (SC) / Fabric B
- ColorSphere® (SC) / C.O.M.
- Nest / Nest
- Nest / Fabric A
- Nest / Fabric B
- Nest / C.O.M.
- Saddle Extra / ColorSphere® (SC)
- Saddle Extra / Nest
- Saddle Extra / Soul
- Saddle Extra / Century
- Saddle Extra / Fabric A
- Saddle Extra / Fabric B
- Saddle Extra / C.O.M.
- **cuoio MyFrau / ColorSphere® (SC)**
- **cuoio MyFrau / Nest**
- **cuoio MyFrau / Soul**
- **cuoio MyFrau / Century**
- **cuoio MyFrau / Fabric A**
- **cuoio MyFrau / Fabric B**
- **cuoio MyFrau / C.O.M.**

To verify the available fabrics please consult the dedicated table "Combination models-fabrics pattern".

Please Note. The two-color version provides a surcharge of 5% above the price of leather category.

Removability. Not possible.

Aesthetic details. The combination of the materials is exalted by the elegant visible contrast stitching.

N.B. In the case of MyFrau saddle leather it is possible to choose the color of the thread for the seams.

MyFrau saddle leather. MyFrau saddle leather originates from selected hides of adult cattle of European origin and is the result of the same "tanning recipe" developed for the Saddle Extra. MyFrau is tanned obtained through the use of vegetable tannins and totally ecological ingredients. The dyeing process is completely done by hand and the color tone will be different depending on the nuance chosen, on the characteristics of the raw material and on the sensitivity of the craftsman. Due to its coloring and waxing characteristics, MyFrau saddle leather is "photosensitive" and may present color variations due even to the natural absorption of dyeing performed with hand padding. Due to its peculiarity, the MyFrau saddle leather cannot be exposed to direct light or heat sources and any stains are difficult to remove. Any small scars or wrinkles testify the authenticity of the material and its natural origin.

MyFrau - available colours.

- My Deep Blue
- My Green
- My Dark Grey
- My Purple
- My Dark Brown
- My Gingery
- My Colour - ON DEMAND

Headrest. Optional. Padded with polyurethane foam and goose down. No need to be fixed into place, rather it is simply rested on the backrest, where it can be positioned at will thanks to a counterweight inserted into the lining.

Headrest upholstery.

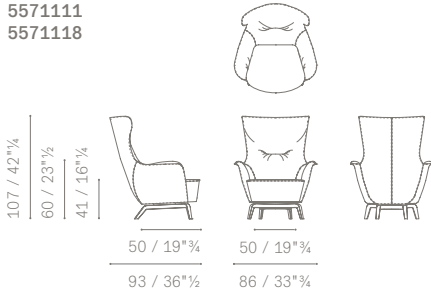
- ColorSphere® (SC)
- Nest
- Soul
- Century
- Fabric A
- Fabric B
- C.O.M.

To verify the available fabrics please consult the dedicated table "Combination models-fabrics pattern".

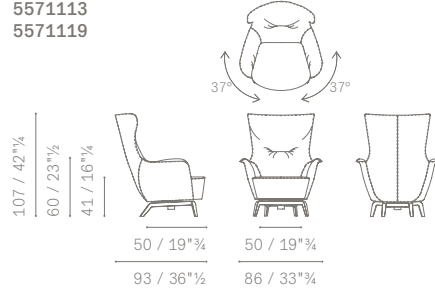
In the same collection.

Mamy Blue bed

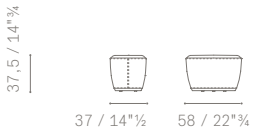
5571111
5571118



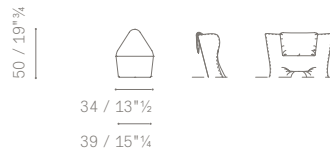
5571113
5571119



5571511
5571518



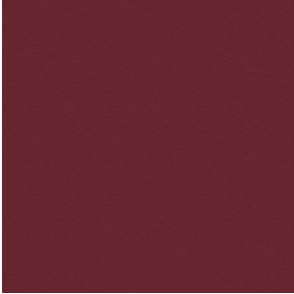
5571596



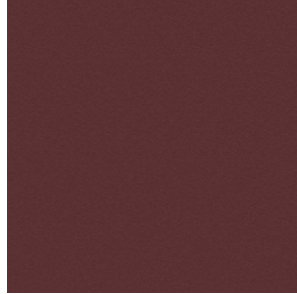
Upholstery | Pelle Frau® leather:

Rivestimento | In Pelle Frau®:

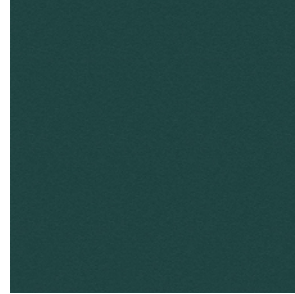
Pelle Frau® Colorsphere



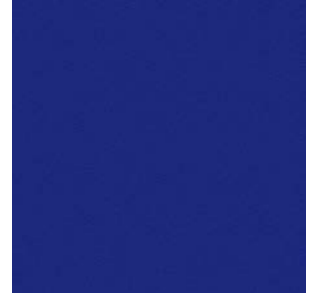
SC 92 Garnet
SC 92 Granato



SC 93 Paperback
SC 93 Brossura



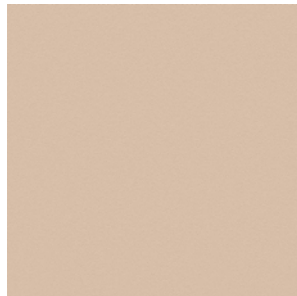
SC 187 Wild
SC 187 Selva



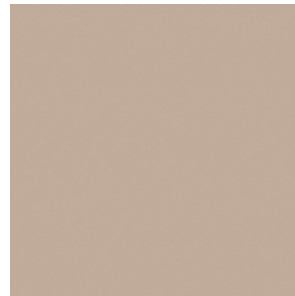
SC 248 Iris
SC 248 Iris



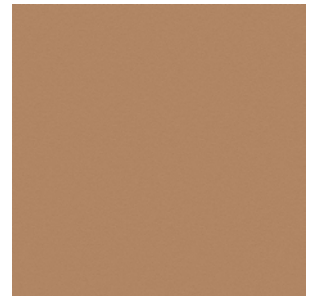
SC 255 Pretty Woman
SC 255 Belladonna



SC 42 Make-Up
SC 42 Maquillage



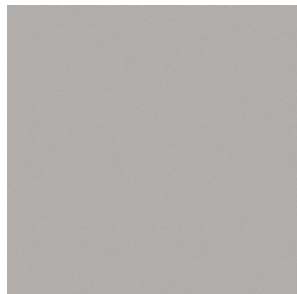
SC 44 Hazelnut
SC 44 Noisette



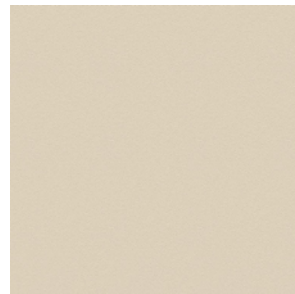
SC 56 Cowhide
SC 56 Vachette



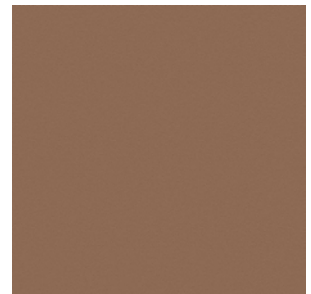
SC 128 Red Carmine
SC 128 Carminio Rosso



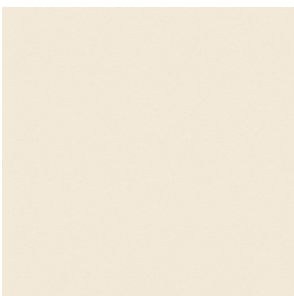
SC 23 Dove
SC 23 Tortora



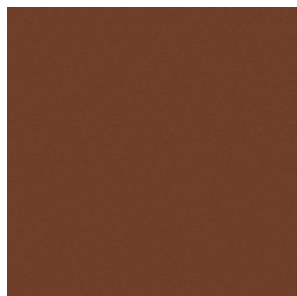
SC 51 Cream
SC 51 Panna



SC 56 Siena
SC 56 Siena



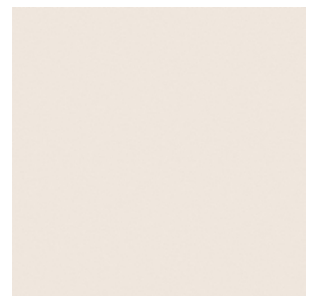
SC 01 Ivory
SC 01 Avorio



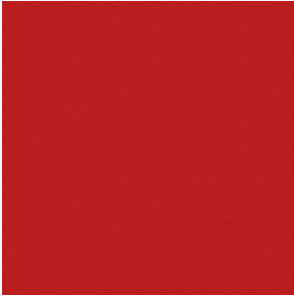
SC 67 Cloves
SC 67 Chiodi di Garofano



SC 99 Carob
SC 99 Carrubo



SC 06 Calicot
SC 06 Calicot



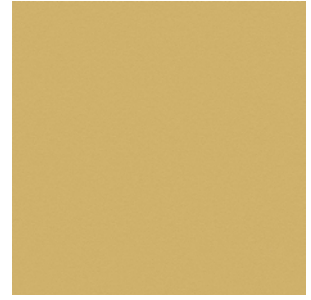
SC 120 Calypso
SC 120 Calypso



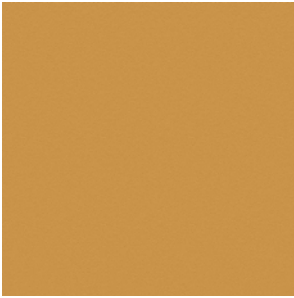
SC 250 Vermillion
SC 250 Vermillion



SC 274 Fresh Blue
SC 274 Fresco Blue



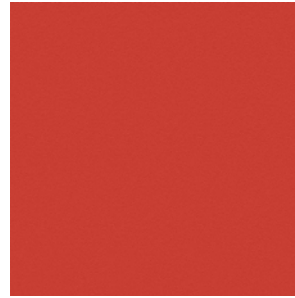
SC 133 Straw
SC 133 Paglierino



SC 136 Ginger Bread
SC 133 Pan Di Zenzero



SC 140 Mimosa
SC 140 Mimosa



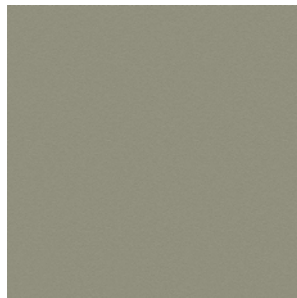
SC 146 Roof Pesto
SC 146 Coccio Pesto



SC 10 Anthracite
SC 10 Antracite



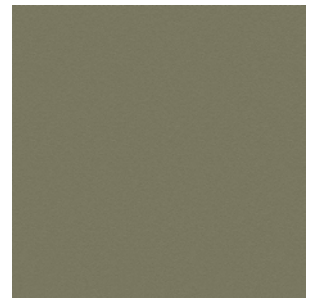
SC 148 Lacquer
SC 148 Lacca



SC 173 Glaucus
SC 173 Glauco



SC 175 Bengali Green
SC 175 Verde Bengali



SC 176 Dock
SC 176 Darsena



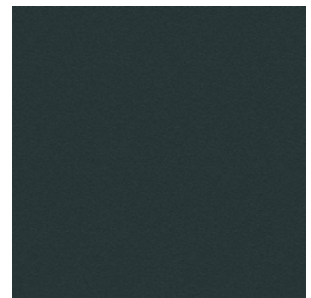
SC 177 Silt
SC 177 Limo



SC 178 Alps
SC 178 Alpi



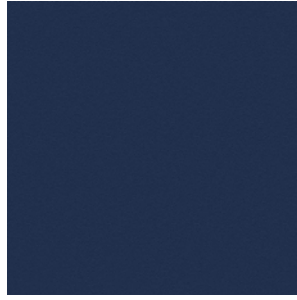
SC 179 Heath
SC 179 Brughiera



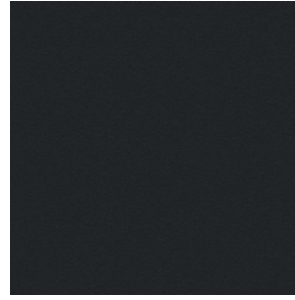
SC 209 Cypress
SC 209 Cipresso



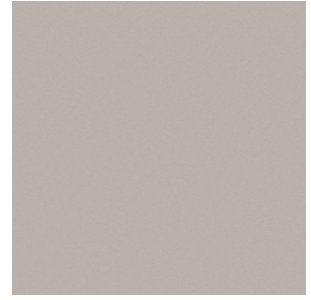
SC 256 Ume
SC 256 Ume



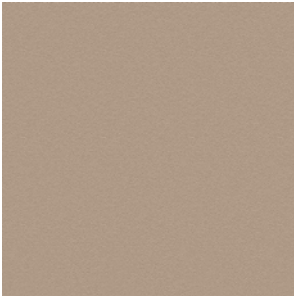
SC 278 Atlantic Blue
SC 278 Blu Atlantico



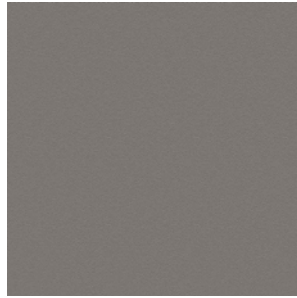
SC 20 Ink
SC 20 Inchiostro



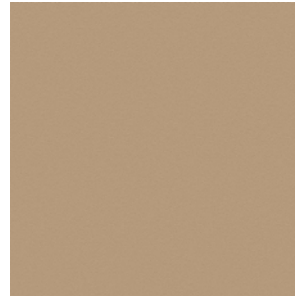
SC 31 Smoky Quartz
SC 31 Quarzo Fume



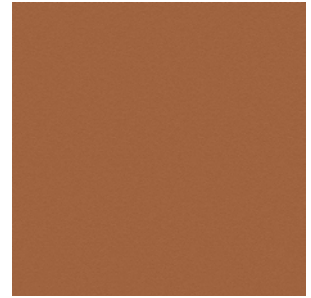
SC 33 Travertine
SC 33 Travertino



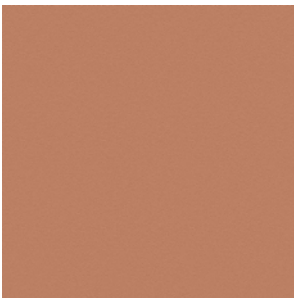
SC 26 Mouse
SC 26 Topo



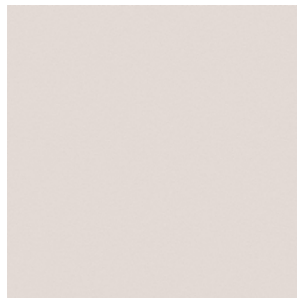
SC 52 Buck
SC 52 Daino



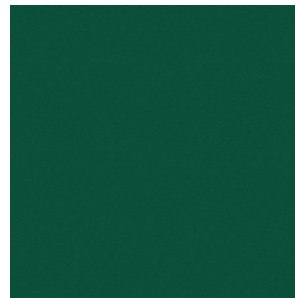
SC 66 India
SC 66 India



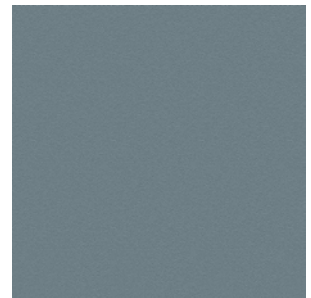
SC 74 Hazelnut
SC 74 Nocciola



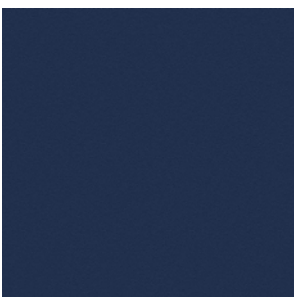
SC 05 Stucco
SC 05 Stucco



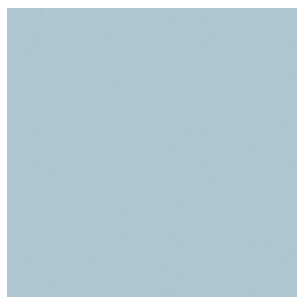
SC 188 Vidrian
SC 188 Vidriana



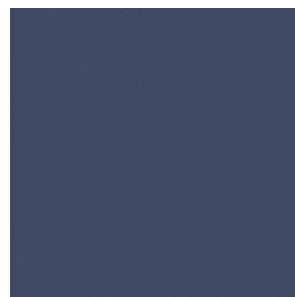
SC 254 Steel Blue
SC 254 Blu Acciaio



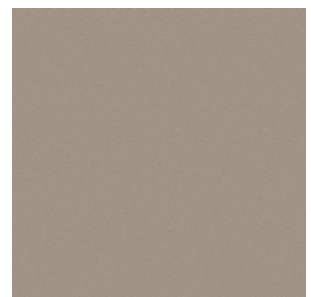
SC 258 Mist
SC 258 Nebbia



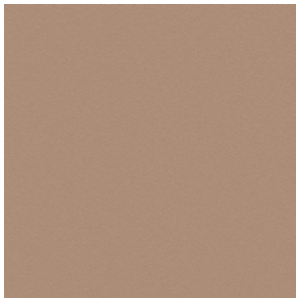
SC 233 Bardiglio
SC 233 Bardiglio



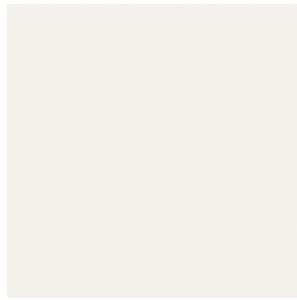
SC 279 Alchemy
SC 279 Alchimia



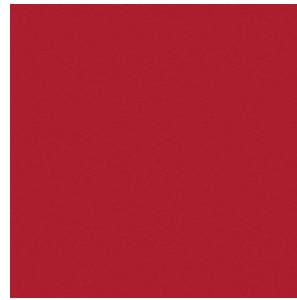
SC 34 Fallow
SC 34 Maggese



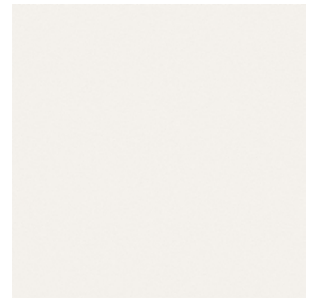
SC 46 Biscuit
SC 46 Biscotto



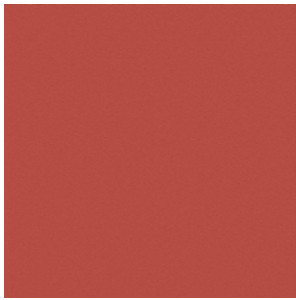
SC 0 Polar
SC 0 Polare



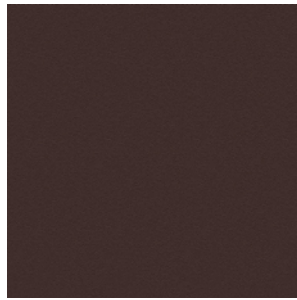
SC 127 Siam
SC 127 Siam



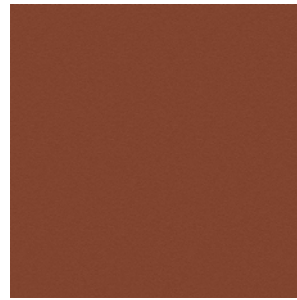
SC 28 Seppia
SC 28 Seppia



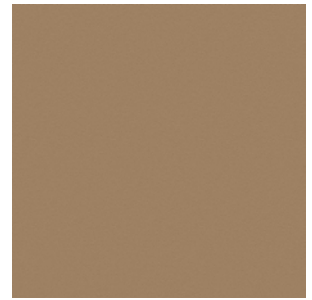
SC 96 Brick
SC 96 Mattone



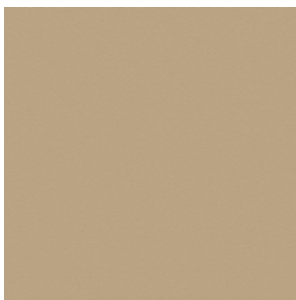
SC 80 Bruno L'avana
SC 80 Bruno Havana



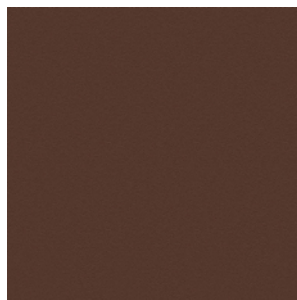
SC 48 Tonka
SC 48 Tonka



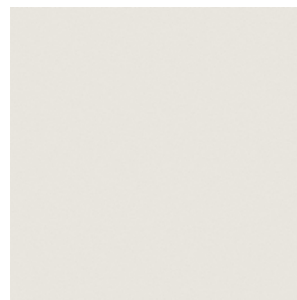
SC 55 Caramel Hair
SC 55 Capelli Caramello



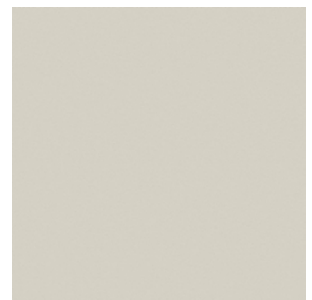
SC 53 Crete
SC 53 Creta



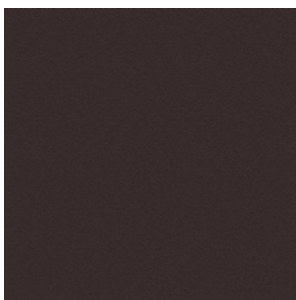
SC 59 Pecan Nut
SC 59 Noce di Pecan



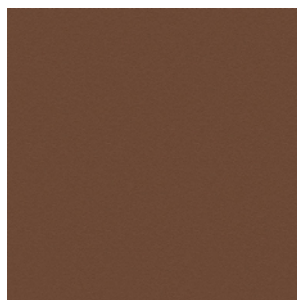
SC 04 White Milk
SC 04 Latte Bianco



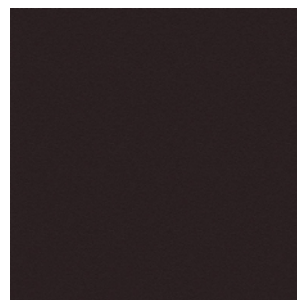
SC 21 Asbestos
SC 21 Amianto



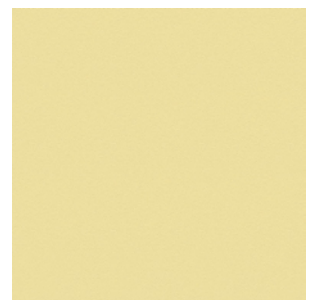
SC 29 Slate
SC 29 Ardesia



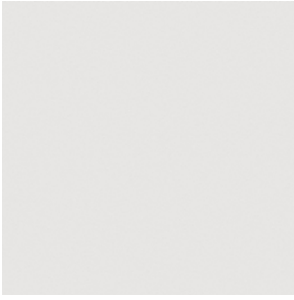
SC 57 Peat
SC 57 Torba



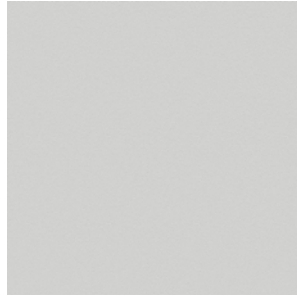
SC 100 Fondant
SC 100 Fondant



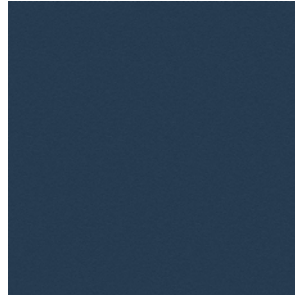
SC 132 Eggshell
SC 132 Guscio D'uovo



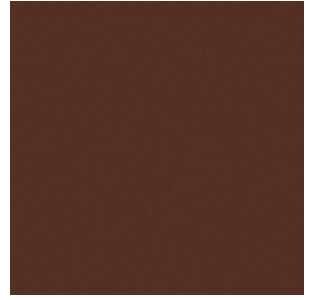
SC 19 Georgette
SC 19 Georgetta



SC 22 Chiffon
SC 22 Chiffon



SC 276 Mineral Blue
SC 276 Blu Minerale



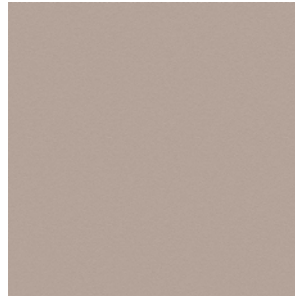
SC 69 Brown Iroko
SC 69 Iroko Marrone



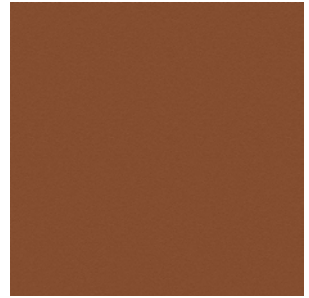
SC 280 Abyss
SC 280 Abisso



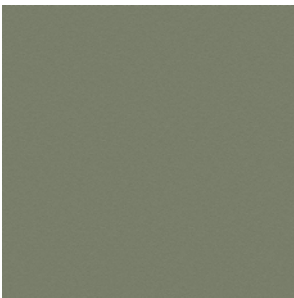
SC 32 Kaolin
SC 32 Caolino



SC 40 Cachmire
SC 40 Cachemire

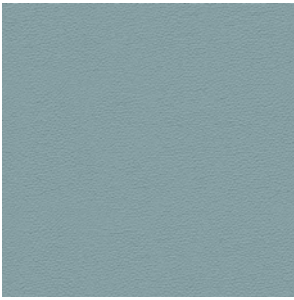


SC 68 Sahara Brown
SC 68 Sahara Marrone

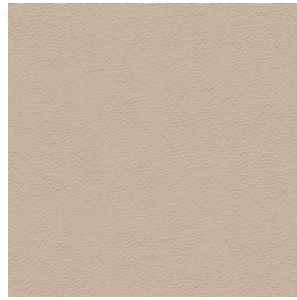


SC 180 Celadon
SC 180 Celadon

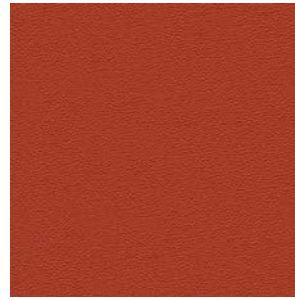
Pelle Frau® Nest



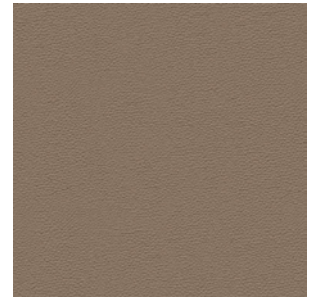
Chalcedony
Calcedonio



Mother Of Pearl
Madreperla



Mars
Marte



Sandstone
Arenaria



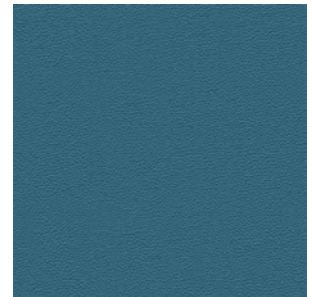
Amber
Ambra



Concrete
Cemento



Moon
Luna



Blue
Azul



Clay
Argilla



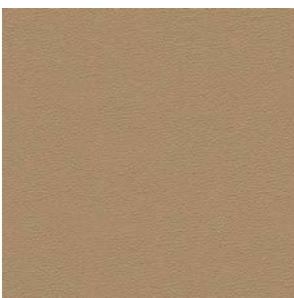
Graphite
Grafite



Malachite
Malachite



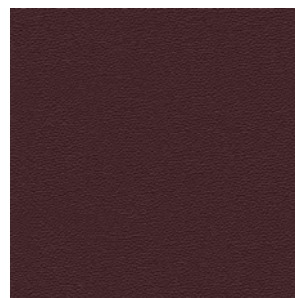
Silica
Silice



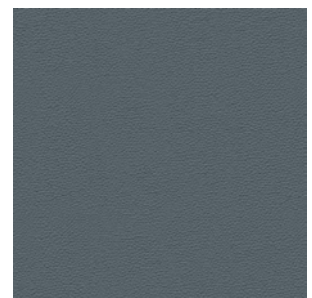
Tuff
Tufo



Ammonite
Ammonite

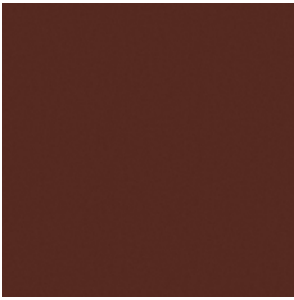


Garnet
Granato



Larimar
Larimar

Pelle Frau® Soul



Diana



Joe



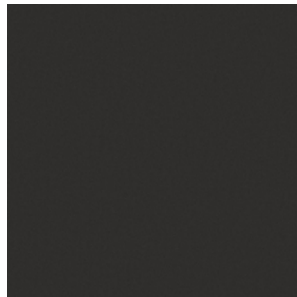
Amy



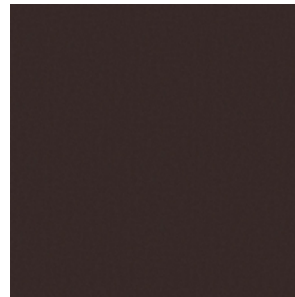
Whitney



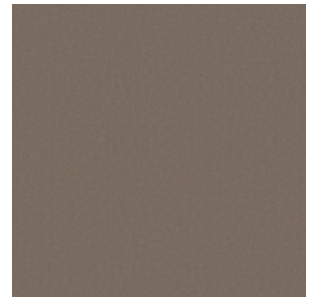
Nina



Otis



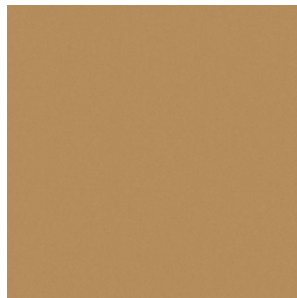
Ray



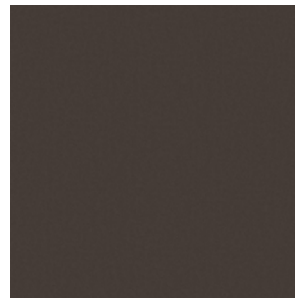
Smokey



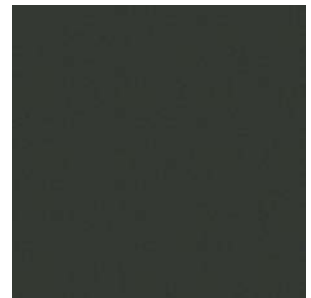
Wilson



Anita

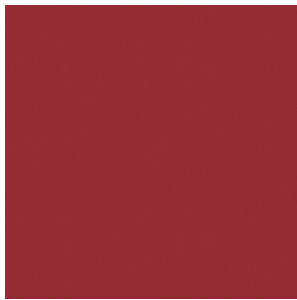
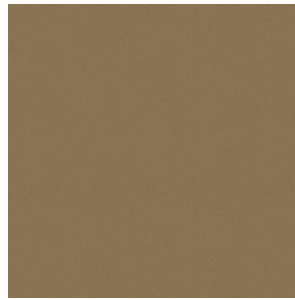
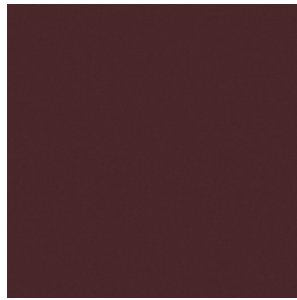
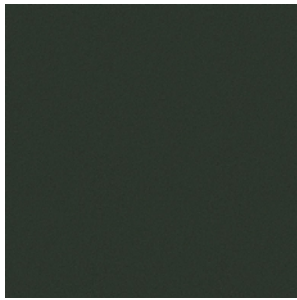
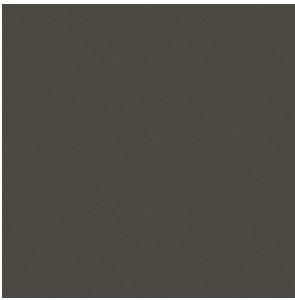
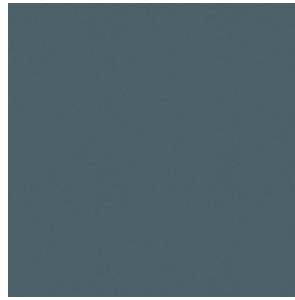
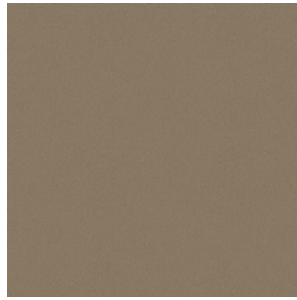
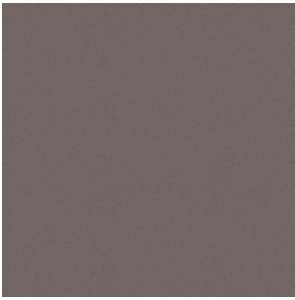


Dusty

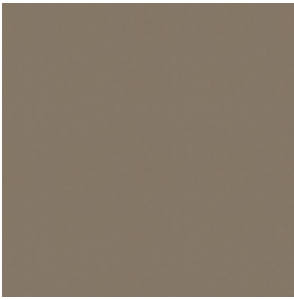


Stevie

Pelle Frau® Century



Saddle Extra



Mole
Talpa



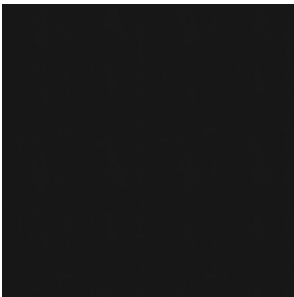
Dark Brown
Testa di Moro



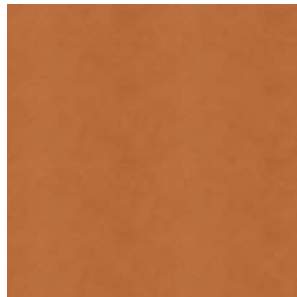
Rope
Corda



Dust
Polvere



Coal
Carbone



Camel
Cammello

Upholstery | Fabric:
Rivestimento | Tessuto:

Fabric A: Giano



9 Light
9 Chiaro



7 Dark
7 Scuro



9 Dark
9 Scuro



3 Light
3 Chiaro

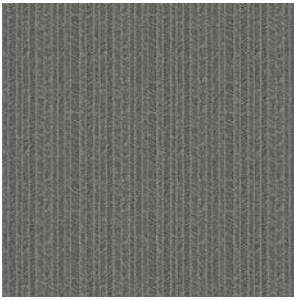


7 Light
7 Chiaro

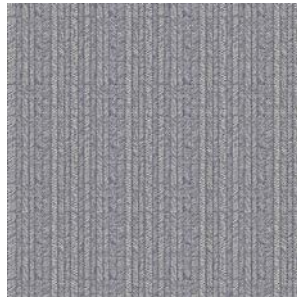


3 Dark
3 Scuro

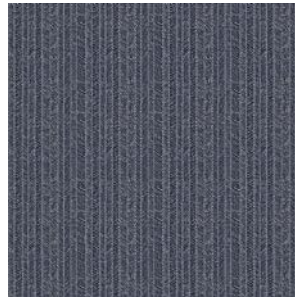
Fabric A: Nouveau



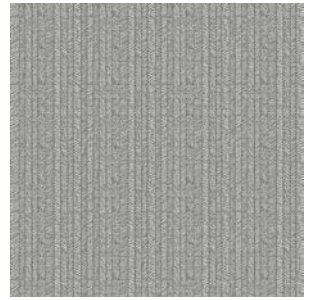
10 Dark
10 Scuro



13 Light
13 Chiaro



13 Dark
13 Scuro



10 Light
10 Chiaro

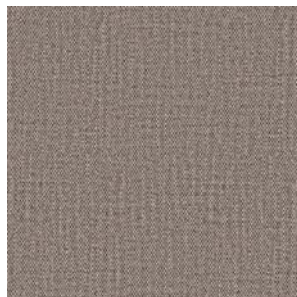


03

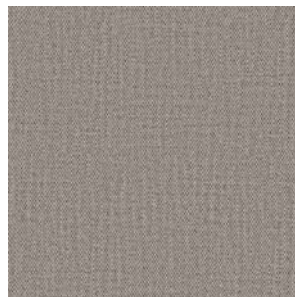
Fabric A: Paltò



White 01
Bianco 01

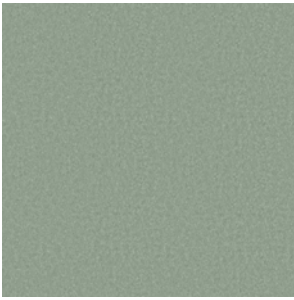


Moor's head 10
Testa di Moro 10

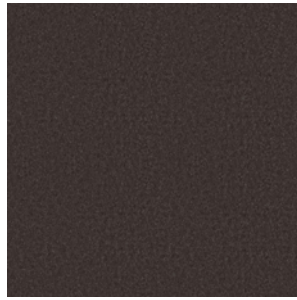


Mouse 13
Topo 13

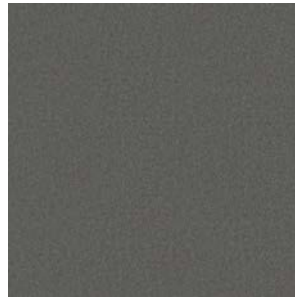
Fabric B: Barkley



Lichen
Lichene



Moor's Head
Testa di Moro



Mouse
Topo



Avio
Avio

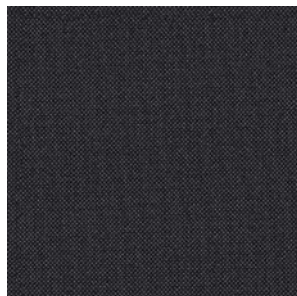


Pearl
Perla

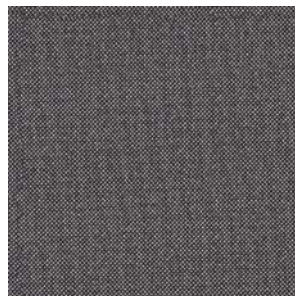
Fabric B: Bouclè



104



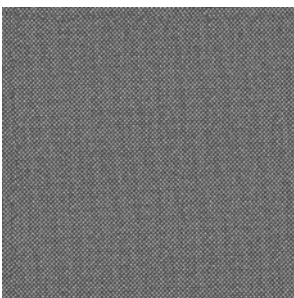
103



105



101

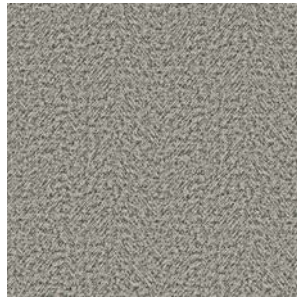


102

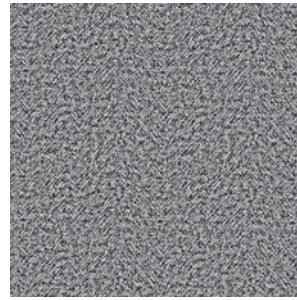
Fabric B: Scottish



20

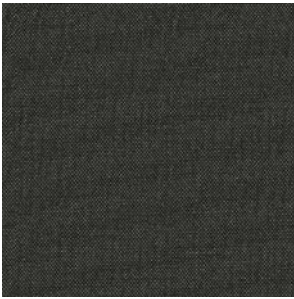


33



31

Fabric B: Shine



Forest
Foresta



Silver
Argento



Starry blue
Blu stellato

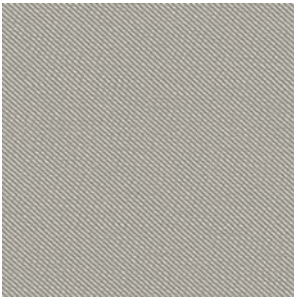


Beige
Beige



Black iris
Iris nero

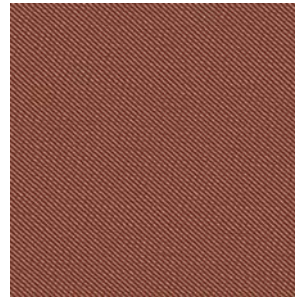
Fabric B: Twill



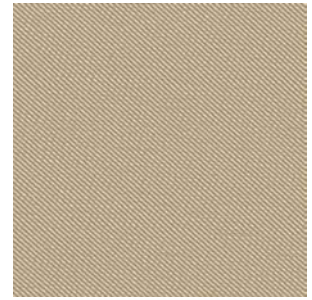
018 Gray
018 Grigio



109 Ash
109 Cenere



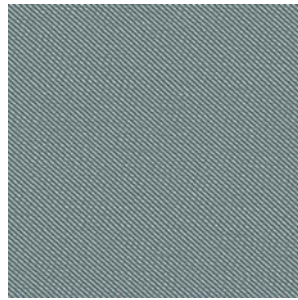
102 Rust
102 Ruggine



114 Beige
114 Beige



004 Cotto
004 Cooked

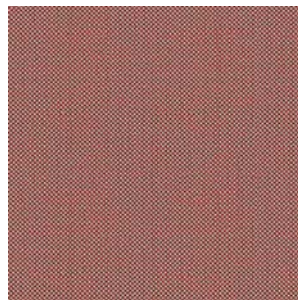


006 Water
006 Acqua

Fabric B: Damie



429.090



429.058



429.110



429.011



429.031

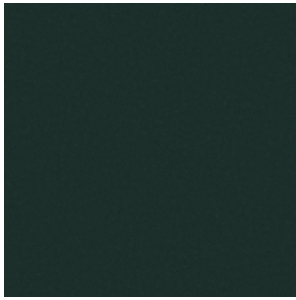


429.032

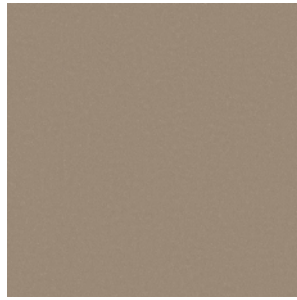


429.052

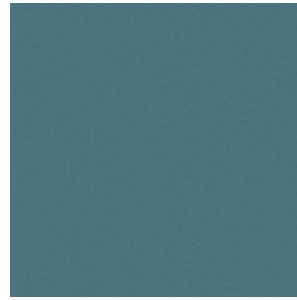
Fabric B: Vega



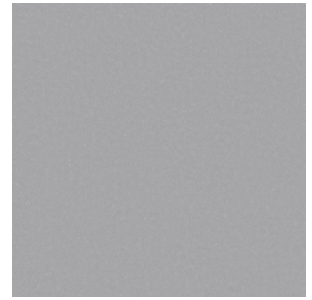
303



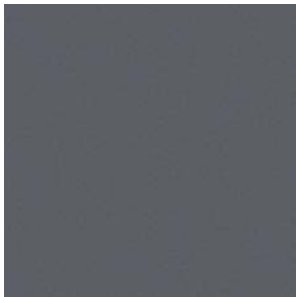
103



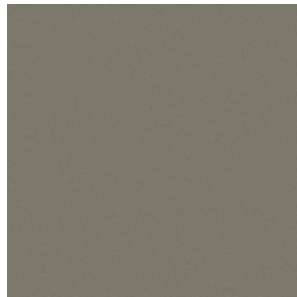
126



129



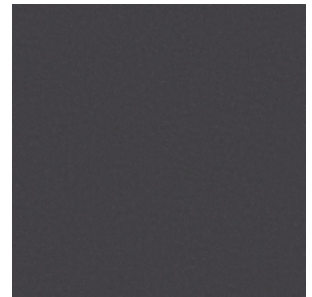
133



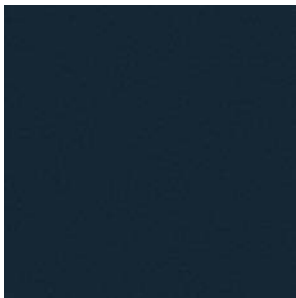
300



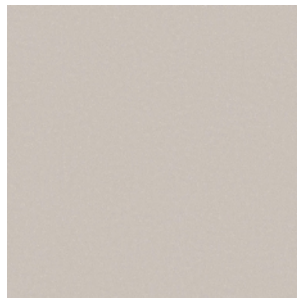
302



135



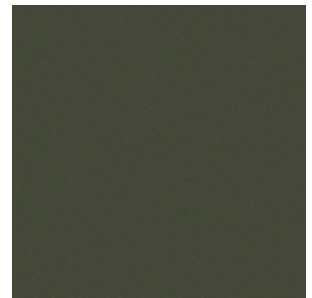
137



144

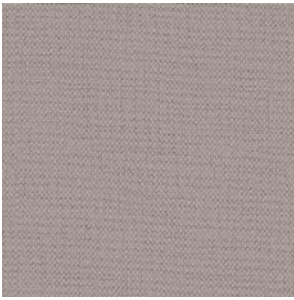


139

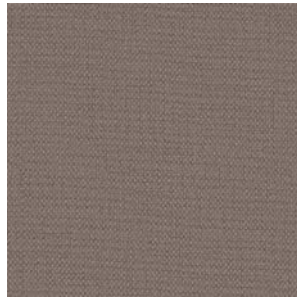


301

Fabric B: Guatemala



Grey
Grigio



Cork
Sughero



Beaver
Castoro



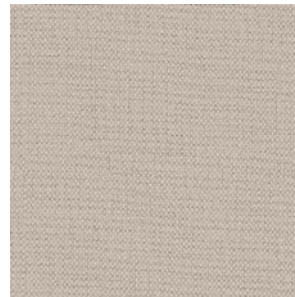
Board
Lavagna



Lead
Piombo



White
Bianco

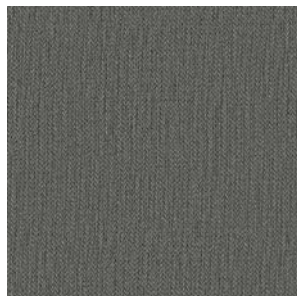


Ecu
Ecu

Fabric B: Milano



05



10

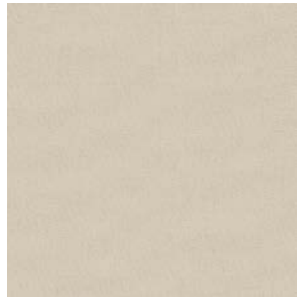


03

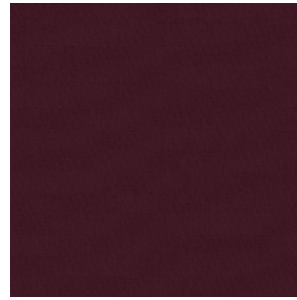
Fabric B: Hermoso



24



01



05



07



08



09



10

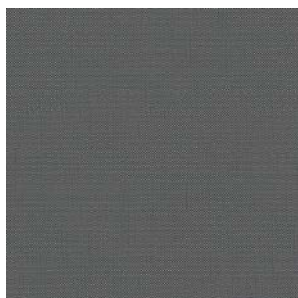


11



17

Fabric B: Penelope



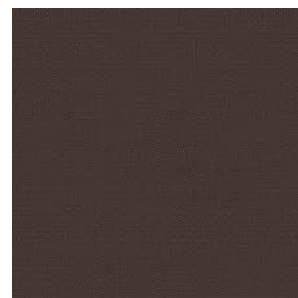
1722



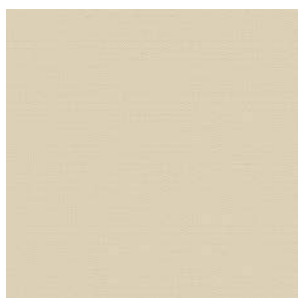
1724



1760



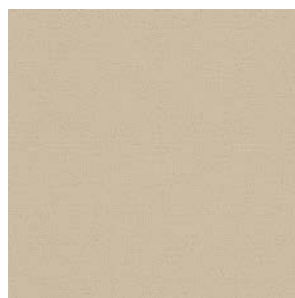
1762



1700



1779



1705



1710

Fabric C.O.M.

Fabric/Mt. plain 0.60 Fabric/Mt. repeat 0.70

Fabric/Mt. plain 0.60 Fabric/Mt. repeat 0.70

To verify the available fabrics please consult the dedicated table "Combination models-fabrics pattern".

Per verificare i tessuti disponibili si prega di consultare la tabella dedicata "Schema abbinamento prodotti-tessuti".