



Hudson

Coffee Table/Ottoman - Tavolino/Pouf
Design - Virginia Harper



Hudson: progetto che unisce spirito ludico, costruzione raffinata e lavorazioni complesse. In un elegante gioco di scatole cinesi, di pieni e vuoti, di leggerezza e materia, un tavolino ne contiene un altro.

Hudson: a project combining refined construction and complex processing with a playful spirit. In this elegant interplay of Chinese boxes, solids and voids, lightness and material, one side table contains the next.

CARATTERISTICHE TECNICHE

TAVOLINO

Struttura. Tubolare metallico con finitura canna di fucile. Il fissaggio del rivestimento alla struttura di acciaio è ottenuto con strisce di velcro collocate nella parte inferiore.

Piano. In lamiera e in multistrato di betulla verniciato nero.

Piedi. La struttura poggia su 3 piedini in poliuretano termoplastico nero opaco.

Rivestimento. Alterna tre pannelli di cuoio pieno a tre in cuoio traforato. Rivestimento in cuoio Saddle Extra con bordo a taglio netto e cuciture a contrasto.

Dettagli estetici. Sulle tre pareti curve è stato realizzato un particolare intaglio con motivo geometrico.

POUF / TAVOLINO

Struttura. In multistrato di betulla con una leggera imbottitura in poliuretano espanso.

Piano. In multistrato di pioppo. Pannelli perimetrali curvati in faesite.

Piedi. In materiale plastico. Dei feltrini sono posti a protezione del pavimento.

TECHNICAL FEATURES

COFFEE TABLE

Structure. Made of metal tubular in a gunmetal finish. Velcro strips attach the upholstery to the lower part of the steel frame.

Top. Made of sheet metal and black painted birch plywood.

Feet. On the base are mounted 3 matt black thermoplastic polyurethane feet.

Covering. 3 panels made of solid leather alternate with 3 made of perforated leather. Upholstery in Saddle Extra leather with clear-cut edges and contrasting stitching.

Aesthetic details. A particular curving with geometrical design enriches the three curved panels.

OTTOMAN / COFFEE TABLE

Structure. Made of birch plywood with a light polyurethane padding.

Top. In poplar plywood. Infill panels along the perimeter made of hardboard.

Feet. Made of plastics. Felt pads protect the floor.

Rivestimento. In Pelle Frau® o in tessuto:

- ColorSphere® (SC)
 - Heritage
 - Nest
 - Soul
 - Century
 - Fabric A
 - Fabric B
 - C.O.M. (Fabric/Mt. plain 1.00mt - Fabric/ Mt. repeat 1.10mt)
- Per verificare i tessuti disponibili si prega di consultare la tabella dedicata "Schema abbinamento prodotti-tessuti".

Sfoderabilità. Non prevista.

Dettagli estetici. Una piccola maniglia permette di spostare facilmente il pouf. Quando il pouf è rivestito in pelle la maniglia è in abbinamento, quando è rivestito in tessuto la maniglia è in cuoio Saddle Extra.

Upholstery. In Pelle Frau® leather or fabric:

- ColorSphere® (SC)
 - Heritage
 - Nest
 - Soul
 - Century
 - Fabric A
 - Fabric B
 - C.O.M. (Fabric/Mt. plain 1.00mt - Fabric/ Mt. repeat 1.10mt)
- To verify the available fabrics please consult the dedicated table "Combination models-fabrics pattern".

Removability. Not possible.

Aesthetic details. A small handle can easily move the ottoman. When the ottoman is covered with leather the handle is matched, when is covered with fabric the handle is in Saddle Extra leather.

5594640



42 / 16"½



48 / 19" 42 / 16"½

5594511



38 / 15"½

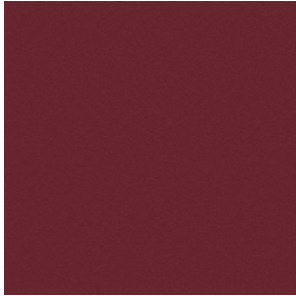


42 / 16"½ 36,5 / 14"½

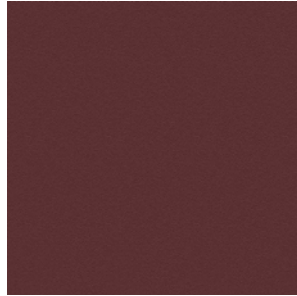
Upholstery | Pelle Frau® leather:

Rivestimento | In Pelle Frau®:

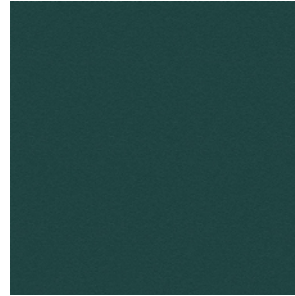
Pelle Frau® Colorsphere



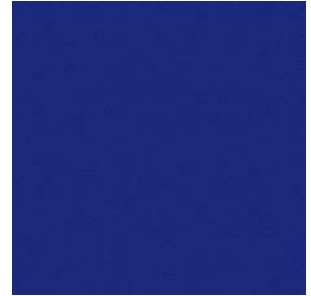
SC 92 Garnet
SC 92 Granato



SC 93 Paperback
SC 93 Brossura



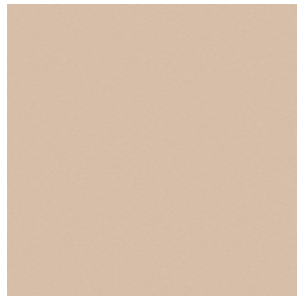
SC 187 Wild
SC 187 Selva



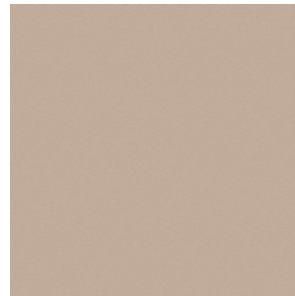
SC 248 Iris
SC 248 Iris



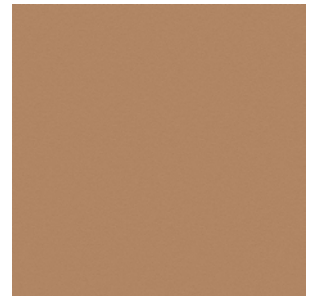
SC 255 Pretty Woman
SC 255 Belladonna



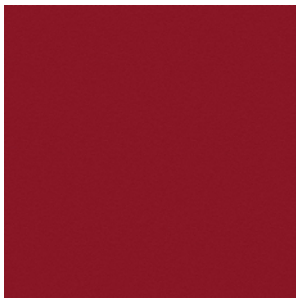
SC 42 Make-Up
SC 42 Maquillage



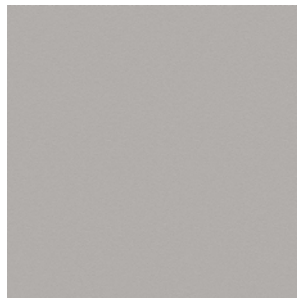
SC 44 Hazelnut
SC 44 Noisette



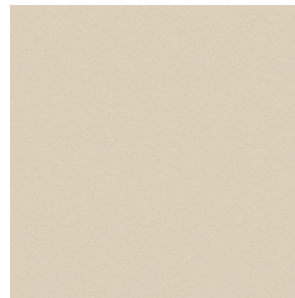
SC 56 Cowhide
SC 56 Vachette



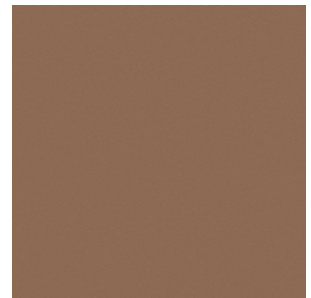
SC 128 Red Carmine
SC 128 Carminio Rosso



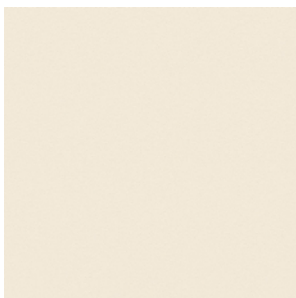
SC 23 Dove
SC 23 Tortora



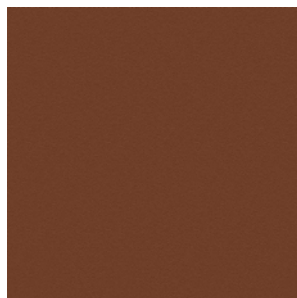
SC 51 Cream
SC 51 Panna



SC 56 Siena
SC 56 Siena



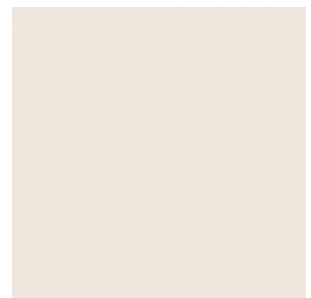
SC 01 Ivory
SC 01 Avorio



SC 67 Cloves
SC 67 Chiodi di Garofano



SC 99 Carob
SC 99 Carrubo



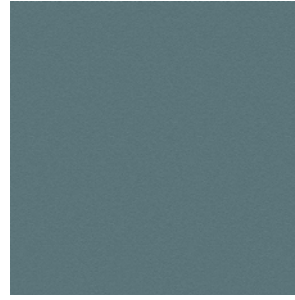
SC 06 Calicot
SC 06 Calicot



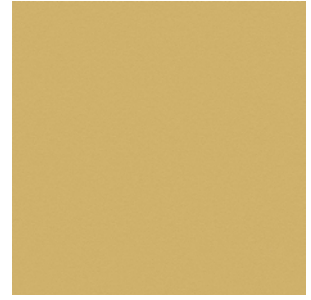
SC 120 Calypso
SC 120 Calypso



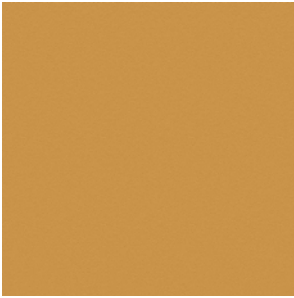
SC 250 Vermillion
SC 250 Vermillion



SC 274 Fresh Blue
SC 274 Fresco Blue



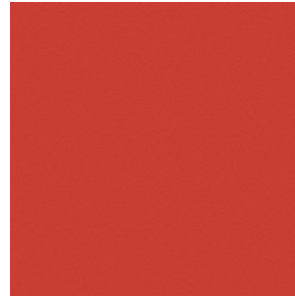
SC 133 Straw
SC 133 Paglierino



SC 136 Ginger Bread
SC 133 Pan Di Zenzero



SC 140 Mimosa
SC 140 Mimosa



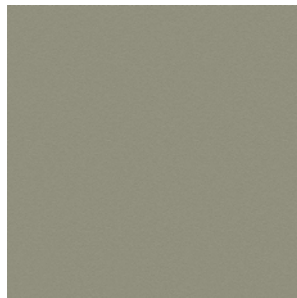
SC 146 Roof Pesto
SC 146 Coccio Pesto



SC 10 Anthracite
SC 10 Antracite



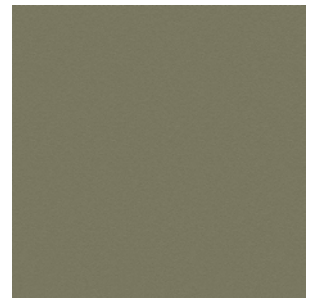
SC 148 Lacquer
SC 148 Lacca



SC 173 Glaucus
SC 173 Glauco



SC 175 Bengali Green
SC 175 Verde Bengali



SC 176 Dock
SC 176 Darsena



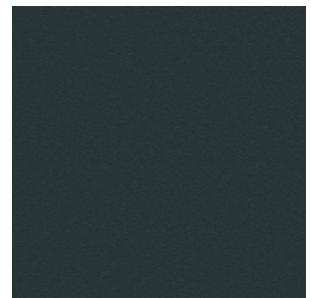
SC 177 Silt
SC 177 Limo



SC 178 Alps
SC 178 Alpi



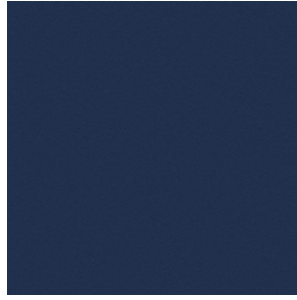
SC 179 Heath
SC 179 Brughiera



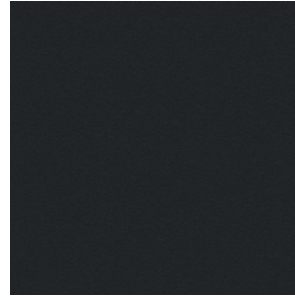
SC 209 Cypress
SC 209 Cipresso



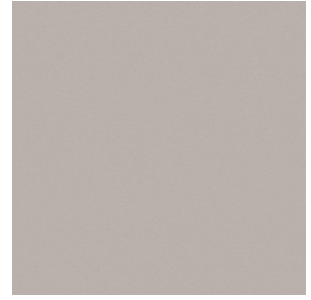
SC 256 Ume
SC 256 Ume



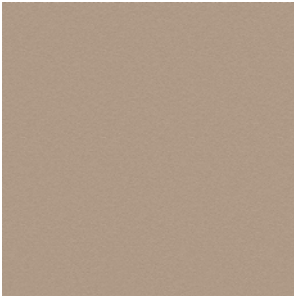
SC 278 Atlantic Blue
SC 278 Blu Atlantico



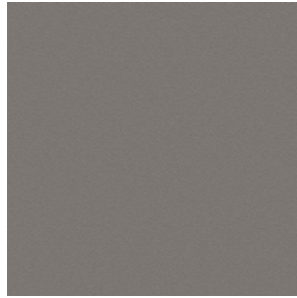
SC 20 Ink
SC 20 Inchiostro



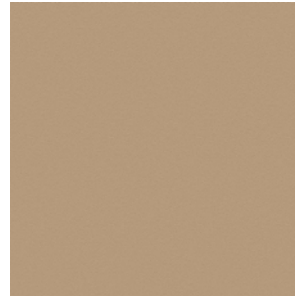
SC 31 Smoky Quartz
SC 31 Quarzo Fume



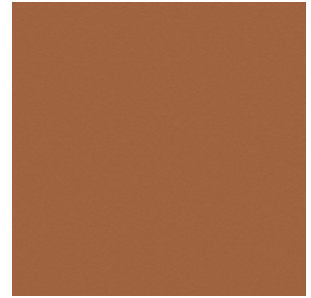
SC 33 Travertine
SC 33 Travertino



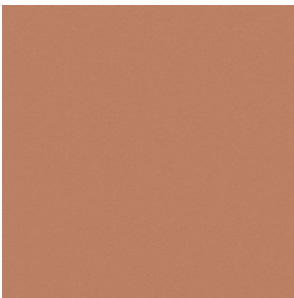
SC 26 Mouse
SC 26 Topo



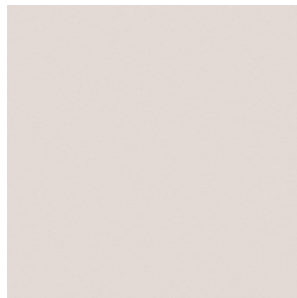
SC 52 Buck
SC 52 Daino



SC 66 India
SC 66 India



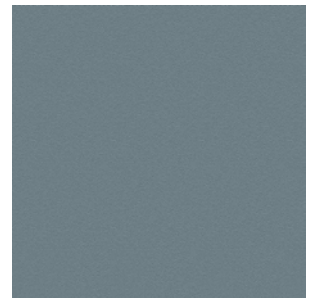
SC 74 Hazelnut
SC 74 Nocciola



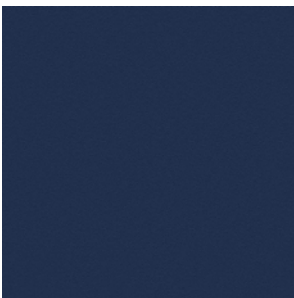
SC 05 Stucco
SC 05 Stucco



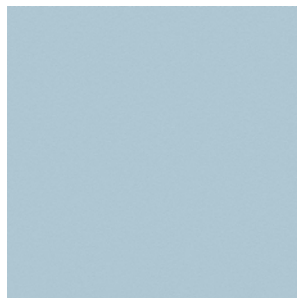
SC 188 Vidrian
SC 188 Vidriana



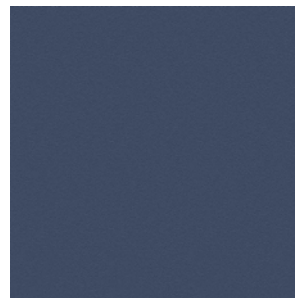
SC 254 Steel Blue
SC 254 Blu Acciaio



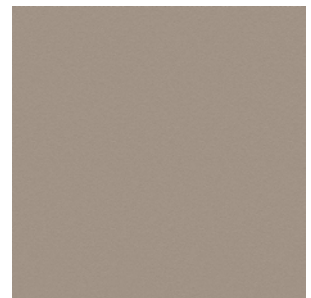
SC 258 Mist
SC 258 Nebbia



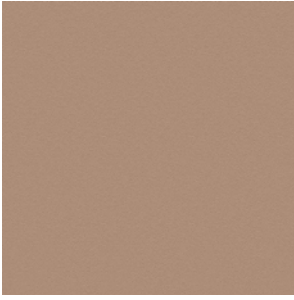
SC 233 Bardiglio
SC 233 Bardiglio



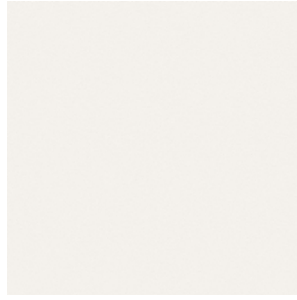
SC 279 Alchemy
SC 279 Alchimia



SC 34 Fallow
SC 34 Maggese



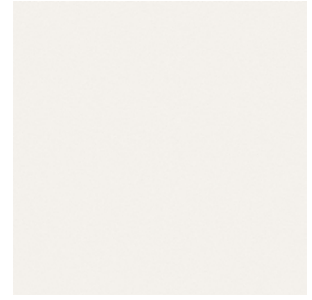
SC 46 Biscuit
SC 46 Biscotto



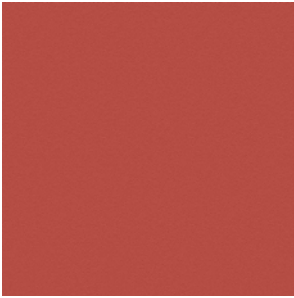
SC 0 Polar
SC 0 Polare



SC 127 Siam
SC 127 Siam



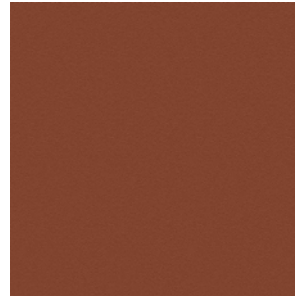
SC 28 Seppia
SC 28 Seppia



SC 96 Brick
SC 96 Mattone



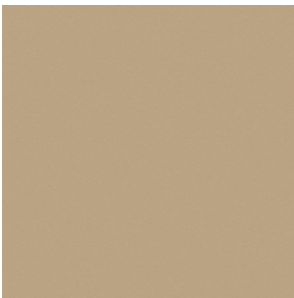
SC 80 Bruno L'avana
SC 80 Bruno Havana



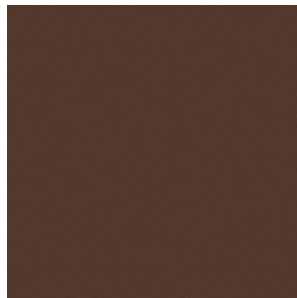
SC 48 Tonka
SC 48 Tonka



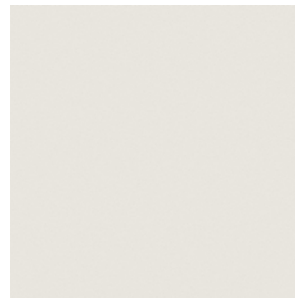
SC 55 Caramel Hair
SC 55 Capelli Caramello



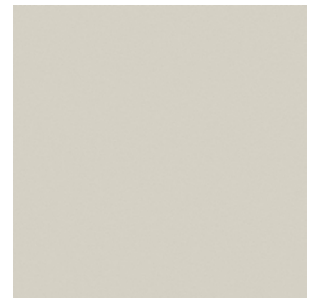
SC 53 Crete
SC 53 Creta



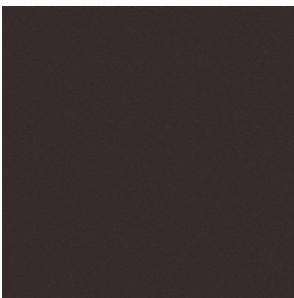
SC 59 Pecan Nut
SC 59 Noce di Pecan



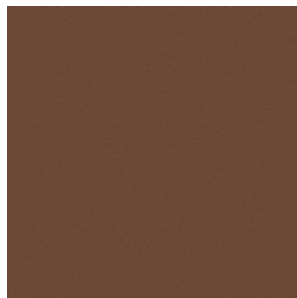
SC 04 White Milk
SC 04 Latte Bianco



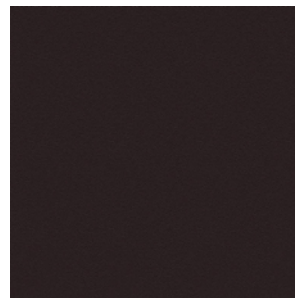
SC 21 Asbestos
SC 21 Amianto



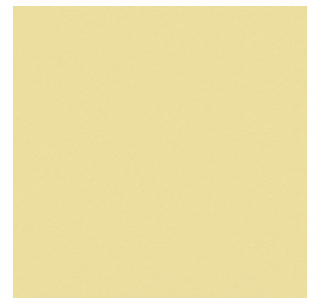
SC 29 Slate
SC 29 Ardesia



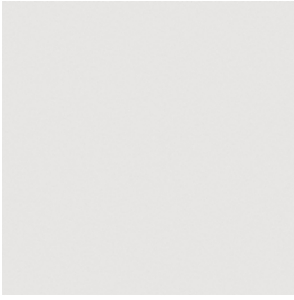
SC 57 Peat
SC 57 Torba



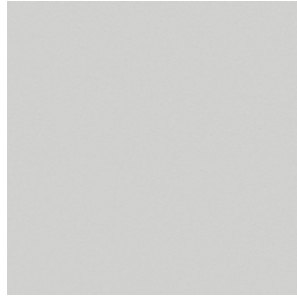
SC 100 Fondant
SC 100 Fondant



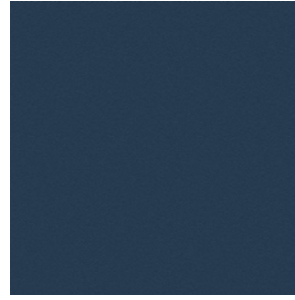
SC 132 Eggshell
SC 132 Guscio D'uovo



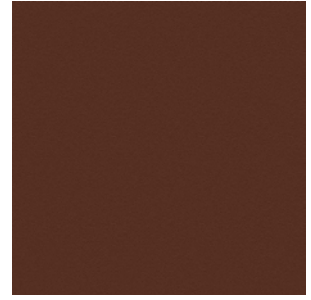
SC 19 Georgette
SC 19 Georgetta



SC 22 Chiffon
SC 22 Chiffon



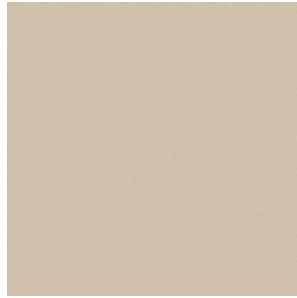
SC 276 Mineral Blue
SC 276 Blu Minerale



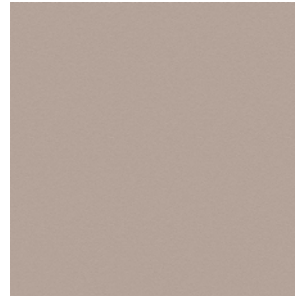
SC 69 Brown Iroko
SC 69 Iroko Marrone



SC 280 Abyss
SC 280 Abisso



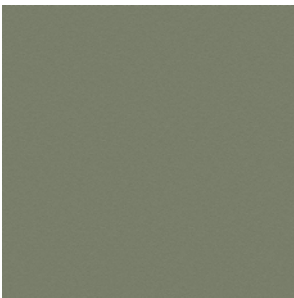
SC 32 Kaolin
SC 32 Caolino



SC 40 Cachmire
SC 40 Cachemire

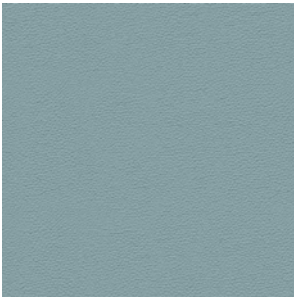


SC 68 Sahara Brown
SC 68 Sahara Marrone

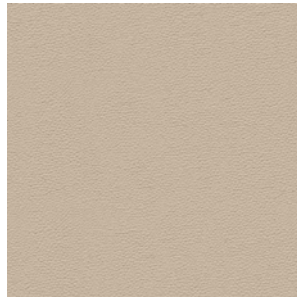


SC 180 Celadon
SC 180 Celadon

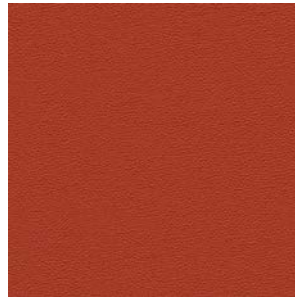
Pelle Frau® Nest



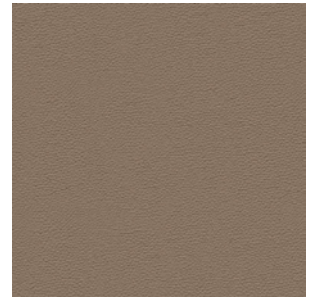
Chalcedony
Calcedonio



Mother Of Pearl
Madreperla



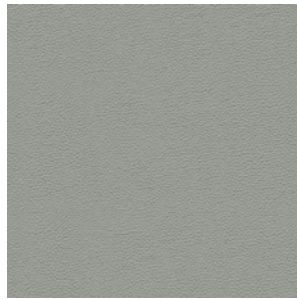
Mars
Marte



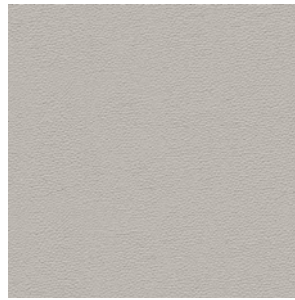
Sandstone
Arenaria



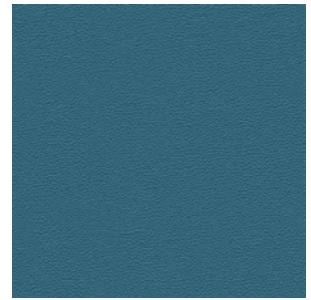
Amber
Ambra



Concrete
Cemento



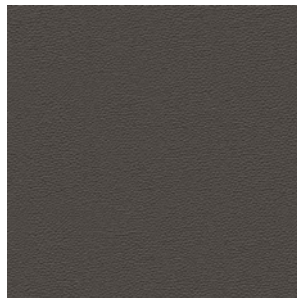
Moon
Luna



Blue
Azul



Clay
Argilla



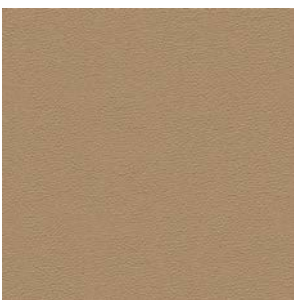
Graphite
Grafite



Malachite
Malachite



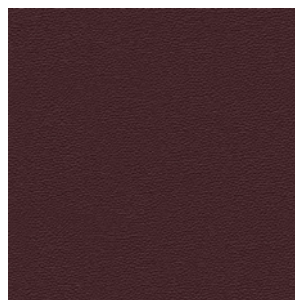
Silica
Silice



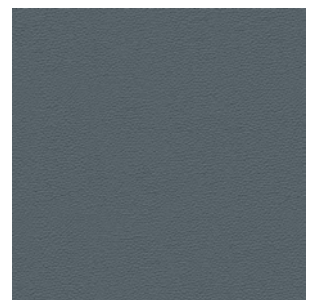
Tuff
Tufo



Ammonite
Ammonite

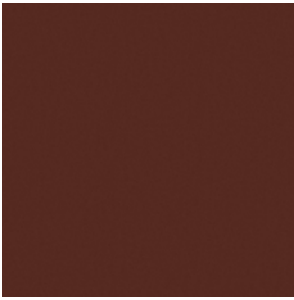


Garnet
Granato



Larimar
Larimar

Pelle Frau® Soul



Diana



Joe



Amy



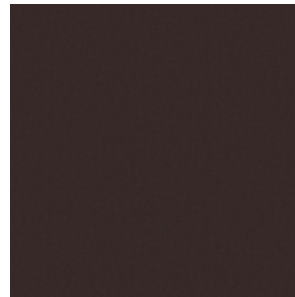
Whitney



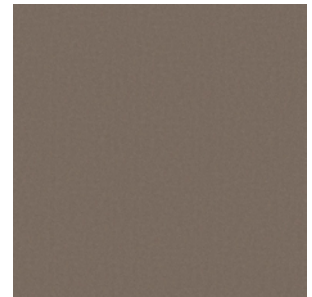
Nina



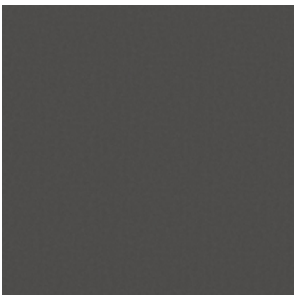
Otis



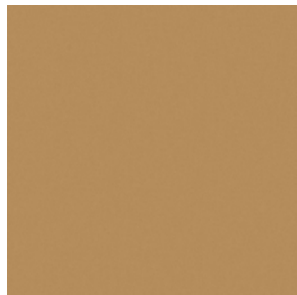
Ray



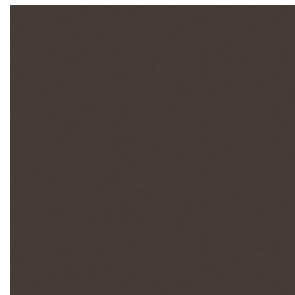
Smokey



Wilson



Anita

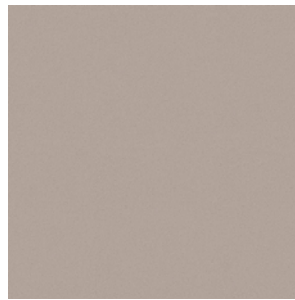
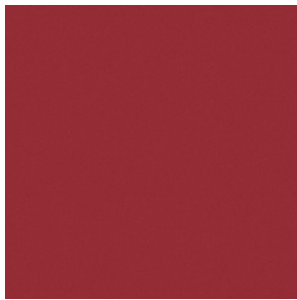
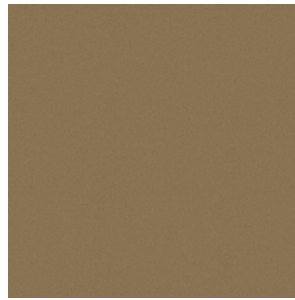
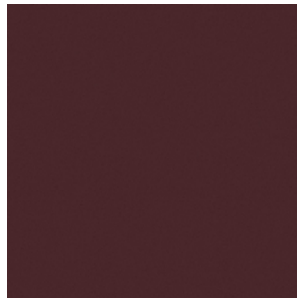
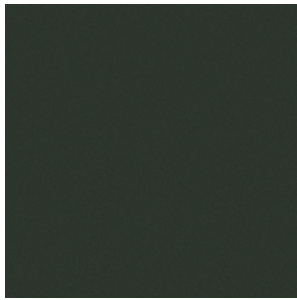
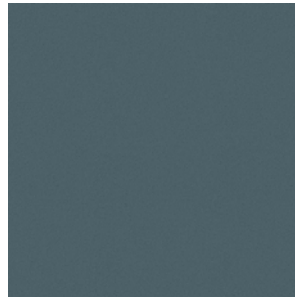
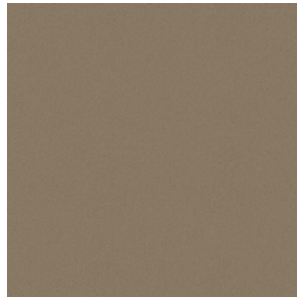
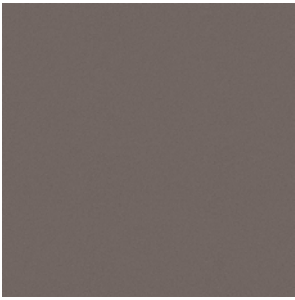


Dusty



Stevie

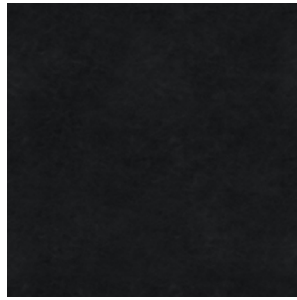
Pelle Frau® Century



Pelle Frau® Heritage



Acorn
Ghianda



Black
Nero



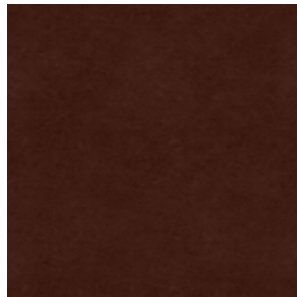
Mahagony
Mahagoni



Brown
Testa di Moro



Bordeaux
Bordeaux



Chestnut
Castagno

Upholstery | Fabric:
Rivestimento | Tessuto:

Fabric A: Giano



9 Light
9 Chiaro



7 Dark
7 Scuro



9 Dark
9 Scuro



3 Light
3 Chiaro

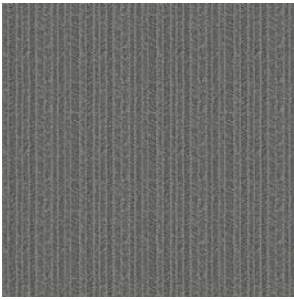


7 Light
7 Chiaro

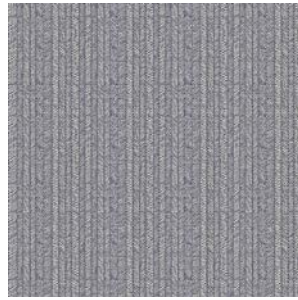


3 Dark
3 Scuro

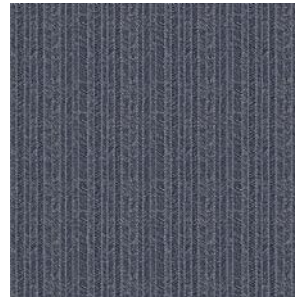
Fabric A: Nouveau



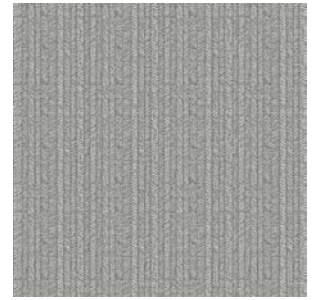
10 Dark
10 Scuro



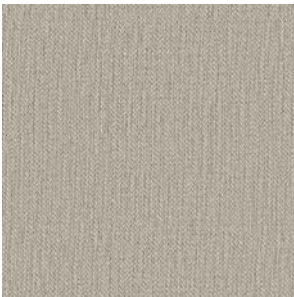
13 Light
13 Chiaro



13 Dark
13 Scuro

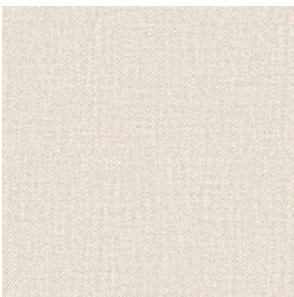


10 Light
10 Chiaro

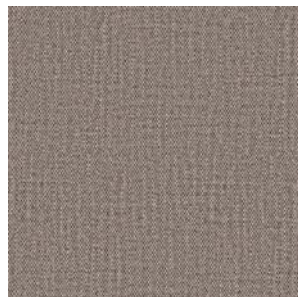


03

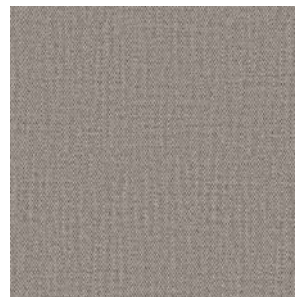
Fabric A: Paltò



White 01
Bianco 01

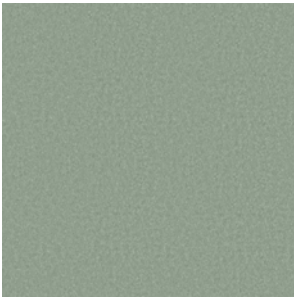


Moor's head 10
Testa di Moro 10

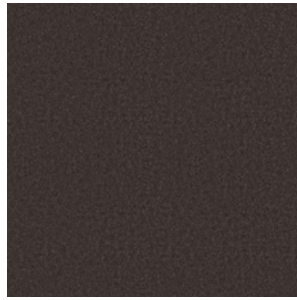


Mouse 13
Topo 13

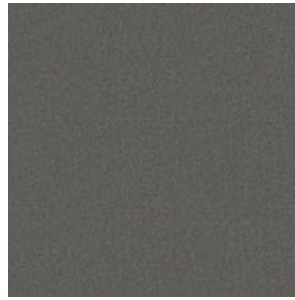
Fabric B: Barkley



Lichen
Lichene



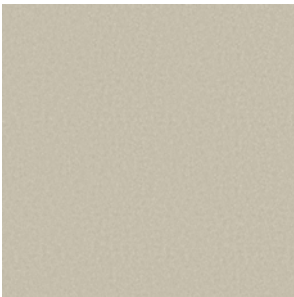
Moor's Head
Testa di Moro



Mouse
Topo



Avio
Avio

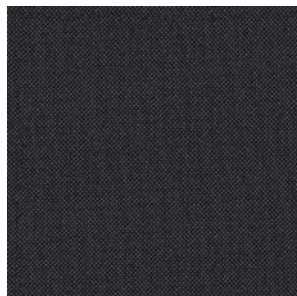


Pearl
Perla

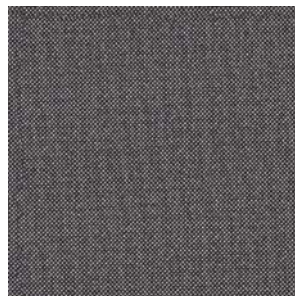
Fabric B: Bouclè



104



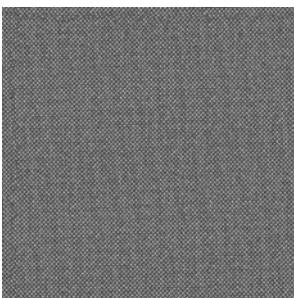
103



105



101

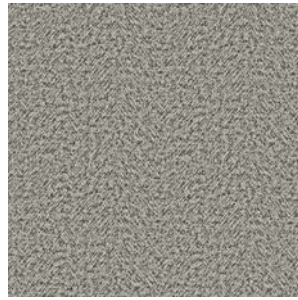


102

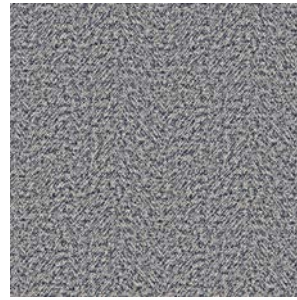
Fabric B: Scottish



20

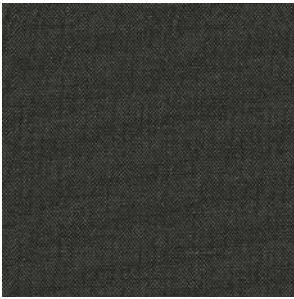


33



31

Fabric B: Shine



Forest
Foresta



Silver
Argento



Starry blue
Blu stellato

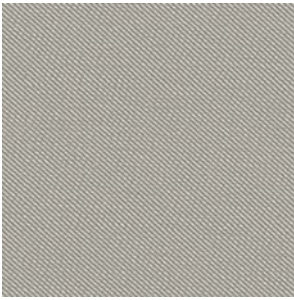


Beige
Beige



Black iris
Iris nero

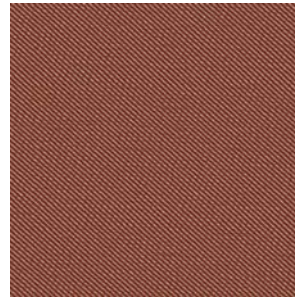
Fabric B: Twill



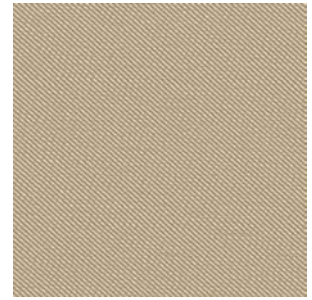
018 Gray
018 Grigio



109 Ash
109 Cenere



102 Rust
102 Ruggine



114 Beige
114 Beige



004 Cotto
004 Cooked

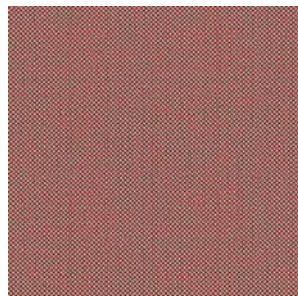


006 Water
006 Acqua

Fabric B: Damie



429.090



429.058



429.110



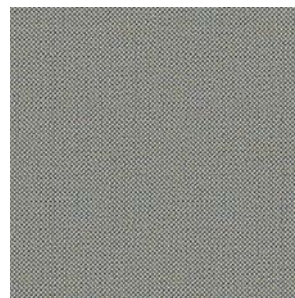
429.011



429.031

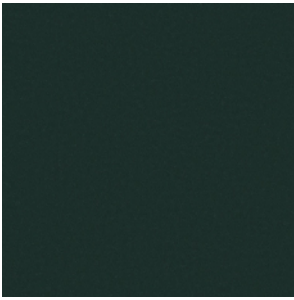


429.032



429.052

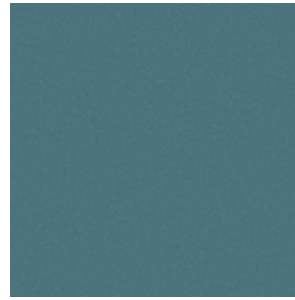
Fabric B: Vega



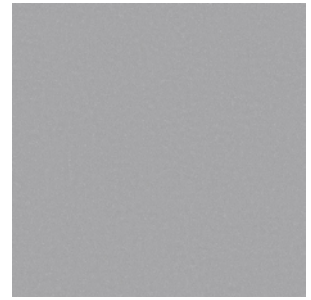
303



103



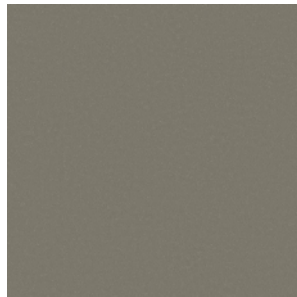
126



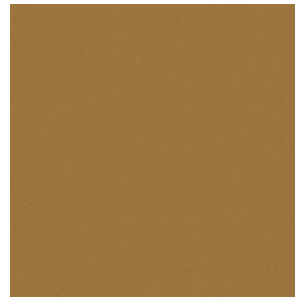
129



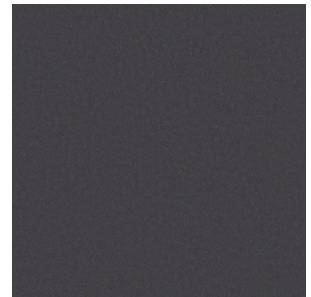
133



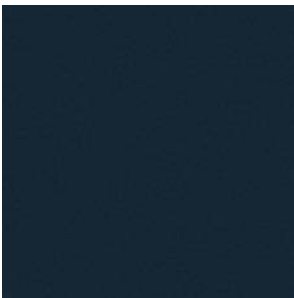
300



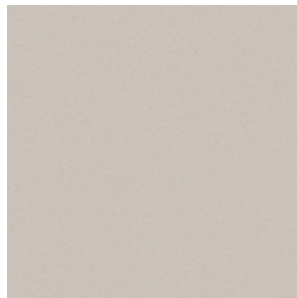
302



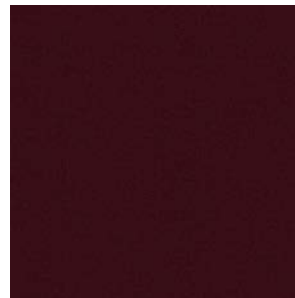
135



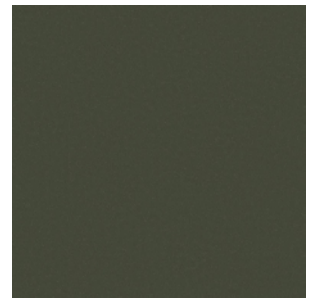
137



144

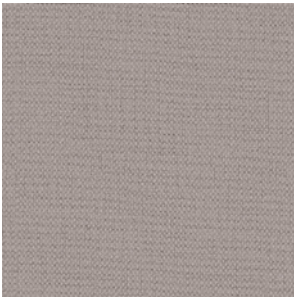


139

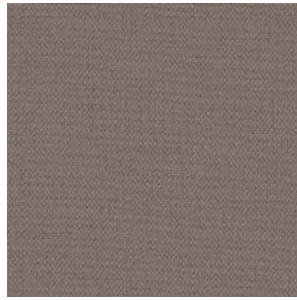


301

Fabric B: Guatemala



Grey
Grigio



Cork
Sughero



Beaver
Castoro



Board
Lavagna



Lead
Piombo



White
Bianco

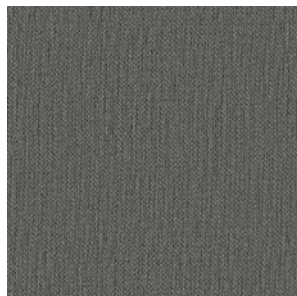


Ecu
Ecu

Fabric B: Milano



05



10

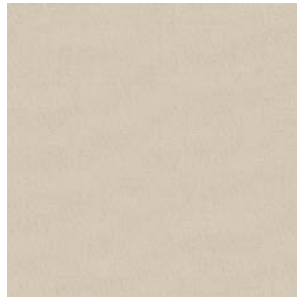


03

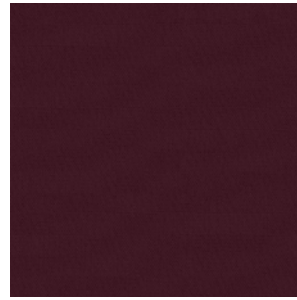
Fabric B: Hermoso



24



01



05



07



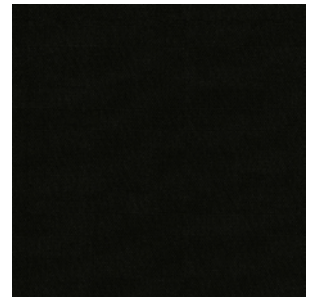
08



09



10

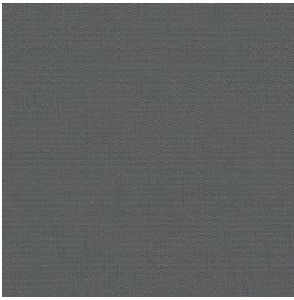


11

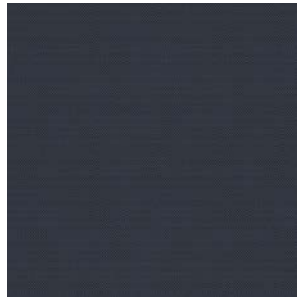


17

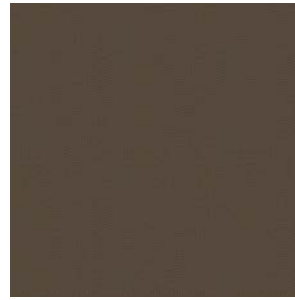
Fabric B: Penelope



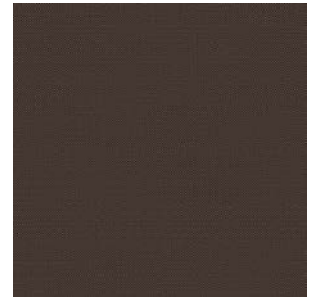
1722



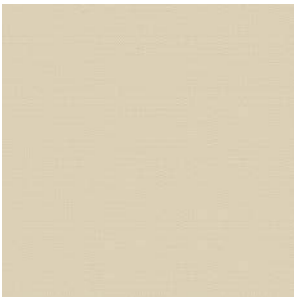
1724



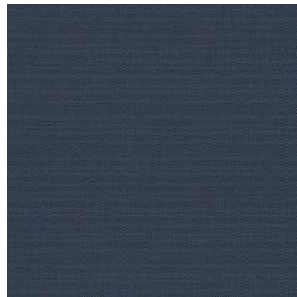
1760



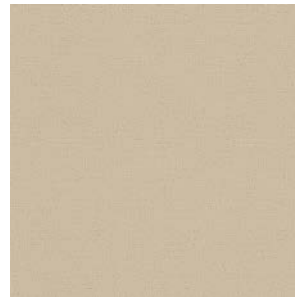
1762



1700



1779



1705



1710

Fabric C.O.M.

Fabric/Mt. plain 0.60 Fabric/Mt. repeat 0.70

Fabric/Mt. plain 0.60 Fabric/Mt. repeat 0.70

To verify the available fabrics please consult the dedicated table "Combination models-fabrics pattern".

Per verificare i tessuti disponibili si prega di consultare la tabella dedicata "Schema abbinamento prodotti-tessuti".