



Dezza 24

Sofa - Divano
Design - Gio Ponti



Disegnata nel 1965, la poltrona Dezza riassume alcuni dei più importanti principi progettuali di Ponti sia dal punto di vista formale, vedi la gamba dalla caratteristica sezione triangolare rastremata, che dal punto di vista metodologico per la rivoluzionaria componibilità "a sistema" mediante un numero limitato di pezzi da assemblare. Da notare infine che, quando progetta la poltrona Dezza e le sue varianti, Ponti ha già 74 anni. Dal 1957 vive, all'ultimo piano, della casa da lui progettata in via Dezza a Milano.

CARATTERISTICHE TECNICHE

Struttura portante. Faggio stagionato.

Molleggio. Poltrona 12: cinghie elastiche. Poltrona e Divano 24, Poltrona 48: tela elastica.

Imbottitura. Poliuretano espanso.

Cuscino seduta e schienale. Imbottiti in poliuretano espanso e ovatta poliestere. La Poltrona 48 è dotata di un poggiatesta in piumino d'oca, integrato allo schienale.

Piedi. Finiture:

- Frassino laccato nero a poro aperto (12)
- Frassino laccato bianco a poro aperto (21)

Finiture aggiuntive per Poltrona e Divano 24 e per Poltrona 48:

- Noce Canaletto (29)

Rivestimento. In Pelle Frau® o nella combinazione che prevede Pelle Frau® per la scocca e Cavallino per i cuscini seduta e schienale. Nella poltrona 12 solo il cuscino seduta può essere rivestito in Cavallino.

- ColorSphere® (SC)
- Heritage
- Nest
- Soul
- Century
- ColorSphere® / Cavallino
- Nest / Cavallino

Sfoderabilità. Non prevista.

Designed in 1965, the Dezza armchair sums up some of the most important design canons of Ponti, both formal (see the leg with its characteristic tapered triangular section) and methodological, thanks to its revolutionary "system modularity" by means of a limited number of pieces to be assembled. Note that when he designed the Dezza armchair and its variants, Ponti was already 74 years old. Since 1957, he has been living on the top floor of the house he designed in Via Dezza, Milan.

TECHNICAL FEATURES

Supporting structure. Seasoned beech wood.

Suspension. Armchair 12: elastic belts. Armchair and Sofa 24, Armchair 48: elastic fabric.

Padding. Polyurethane foam.

Seat and backrest cushion. Padded with polyurethane foam and polyester wadding. The Armchair 48 is fitted with a goose down headrest integrated into the backrest.

Feet. Finishes:

- Black lacquered ash with visible wood grain (12)
- White lacquered ash with visible wood grain (21)

Additional finishes for Armchair and Sofa 24 and Armchair 48:

- Canaletto walnut veneer (29)

Upholstery. In Pelle Frau® leather or in a combination of Pelle Frau® leather for the shell and Cavallino leather for the seat and backrest cushions. Only the seat cushion of the Armchair 12 can be upholstered in Cavallino leather.

- ColorSphere® (SC)
- Heritage
- Nest
- Soul
- Century
- ColorSphere® / Cavallino
- Nest / Cavallino

Removability. Not possible.

Pelle Frau® Cavallino. La disposizione, il colore e la forma delle “macchie” è assolutamente casuale e, per tale ragione, non è possibile effettuare alcuna selezione su richiesta. Si specifica, inoltre, che il colore delle cosiddette “macchie” non è uniforme e tende a variare dalle tonalità del marrone al nero.

Poltrona 12. Presenta dei braccioli molto sottili che rendono possibile l'accostamento di due o più poltrone.

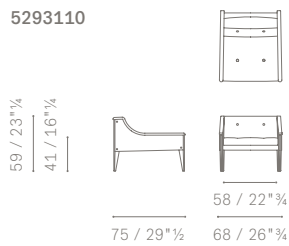
Dettagli estetici. La lavorazione del cuscino schienale e del cuscino seduta è arricchita da una coppia di bottoni rivestiti sempre in pelle. Le estremità degli elementi di montaggio presenti sui fianchi sono in ottone cromato.

Pelle Frau® Cavallino. The arrangement, colour and shape of the “spots” is entirely random and, therefore, no choice can be made. We would also specify that the colour of the above mentioned “spots” is not uniform, and tends to vary from brown to black shades.

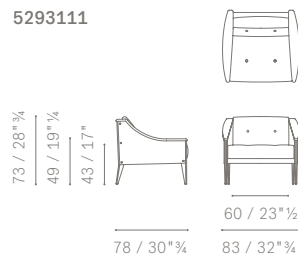
Armchair 12. It has got very thin armrests which make it possible to place two or more armchairs close together.

Aesthetic details. A pair of leather-upholstered buttons embellishes the backrest and seat cushions. The ending parts of the assembly elements are in chrome-plated brass.

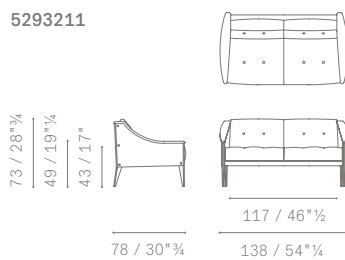
5293110



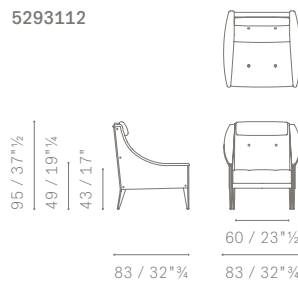
5293111



5293211



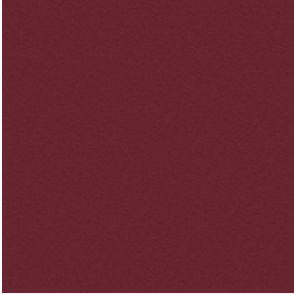
5293112



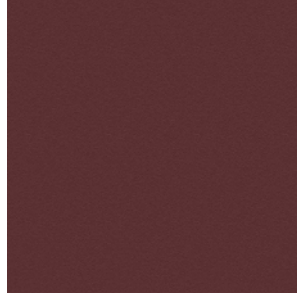
Upholstery | Pelle Frau® leather:

Rivestimento | In Pelle Frau®:

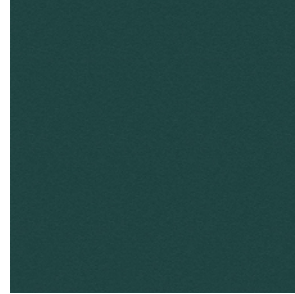
Pelle Frau® Colorsphere



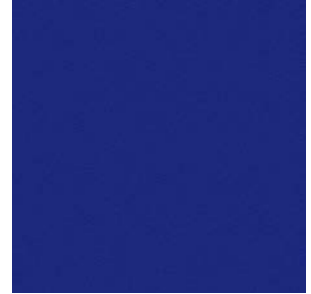
SC 92 Garnet
SC 92 Granato



SC 93 Paperback
SC 93 Brossura



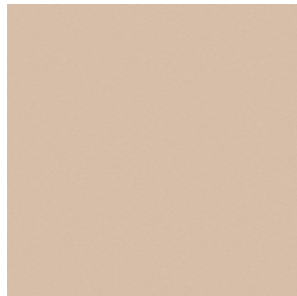
SC 187 Wild
SC 187 Selva



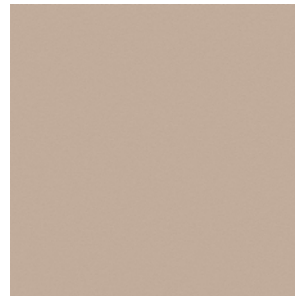
SC 248 Iris
SC 248 Iris



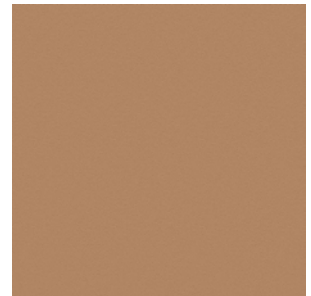
SC 255 Pretty Woman
SC 255 Belladonna



SC 42 Make-Up
SC 42 Maquillage



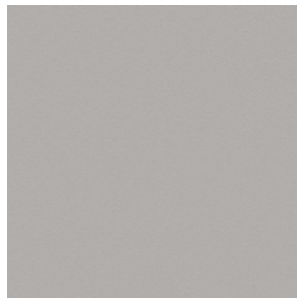
SC 44 Hazelnut
SC 44 Noisette



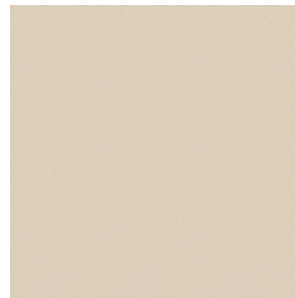
SC 56 Cowhide
SC 56 Vachette



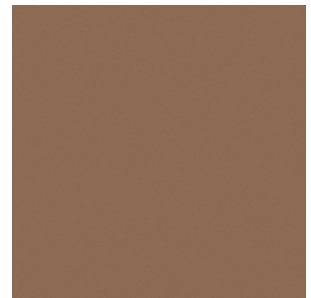
SC 128 Red Carmine
SC 128 Carminio Rosso



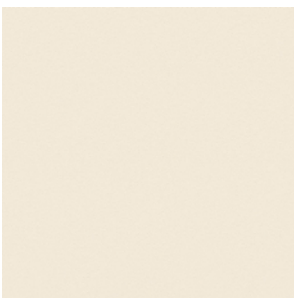
SC 23 Dove
SC 23 Tortora



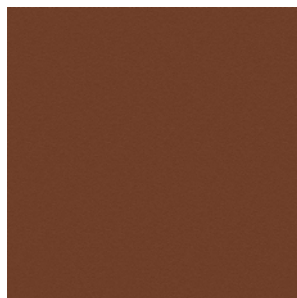
SC 51 Cream
SC 51 Panna



SC 56 Siena
SC 56 Siena



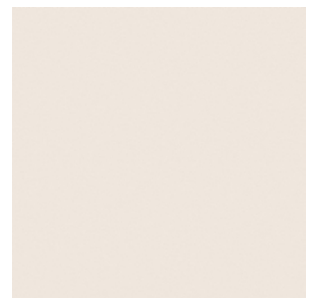
SC 01 Ivory
SC 01 Avorio



SC 67 Cloves
SC 67 Chiodi di Garofano



SC 99 Carob
SC 99 Carrubo



SC 06 Calicot
SC 06 Calicot



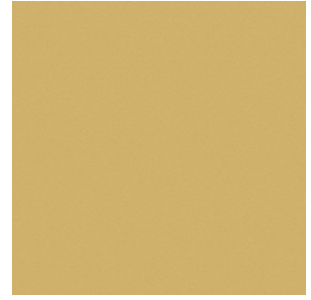
SC 120 Calypso
SC 120 Calypso



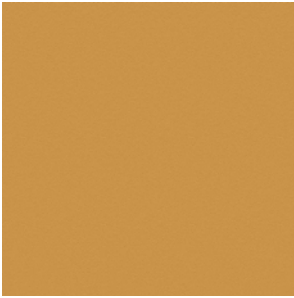
SC 250 Vermillion
SC 250 Vermillion



SC 274 Fresh Blue
SC 274 Fresco Blue



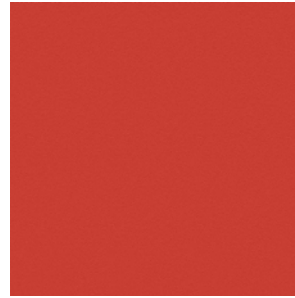
SC 133 Straw
SC 133 Paglierino



SC 136 Ginger Bread
SC 133 Pan Di Zenzero



SC 140 Mimosa
SC 140 Mimosa



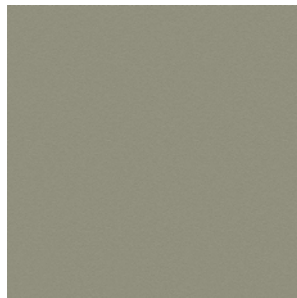
SC 146 Roof Pesto
SC 146 Coccio Pesto



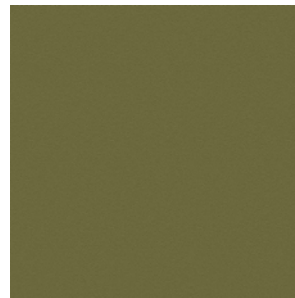
SC 10 Anthracite
SC 10 Antracite



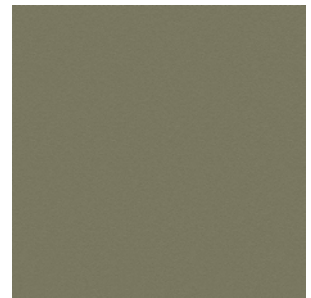
SC 148 Lacquer
SC 148 Lacca



SC 173 Glaucus
SC 173 Glauco



SC 175 Bengali Green
SC 175 Verde Bengali



SC 176 Dock
SC 176 Darsena



SC 177 Silt
SC 177 Limo



SC 178 Alps
SC 178 Alpi



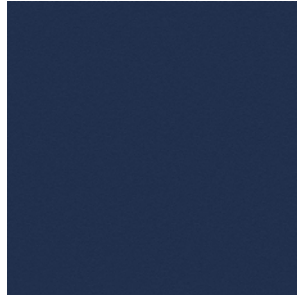
SC 179 Heath
SC 179 Brughiera



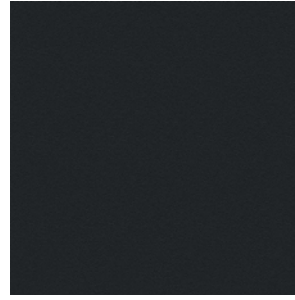
SC 209 Cypress
SC 209 Cipresso



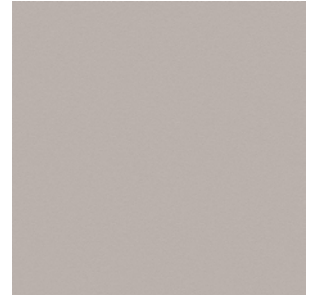
SC 256 Ume
SC 256 Ume



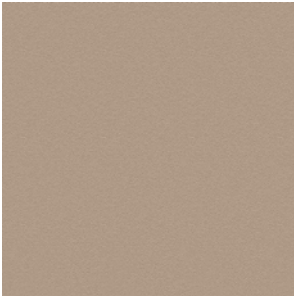
SC 278 Atlantic Blue
SC 278 Blu Atlantico



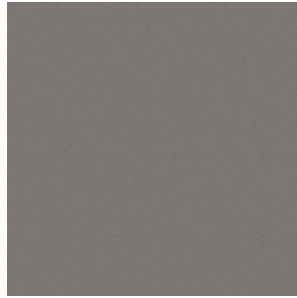
SC 20 Ink
SC 20 Inchiostro



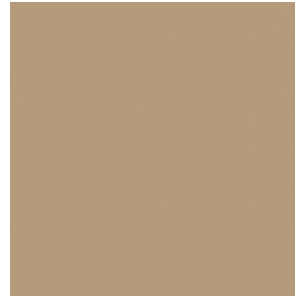
SC 31 Smoky Quartz
SC 31 Quarzo Fume



SC 33 Travertine
SC 33 Travertino



SC 26 Mouse
SC 26 Topo



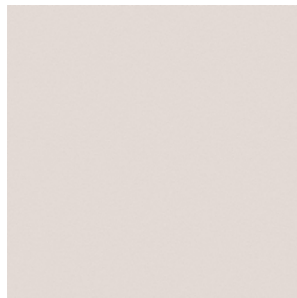
SC 52 Buck
SC 52 Daino



SC 66 India
SC 66 India



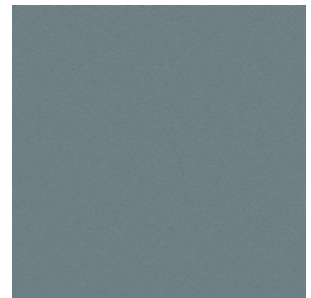
SC 74 Hazelnut
SC 74 Nocciola



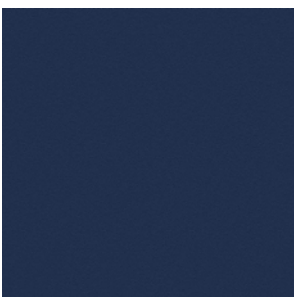
SC 05 Stucco
SC 05 Stucco



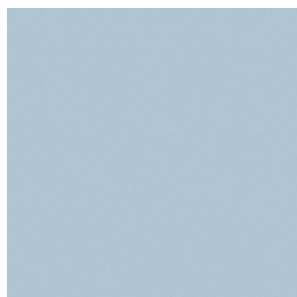
SC 188 Vidrian
SC 188 Vidriana



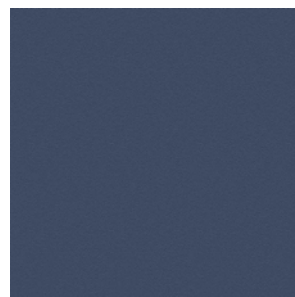
SC 254 Steel Blue
SC 254 Blu Acciaio



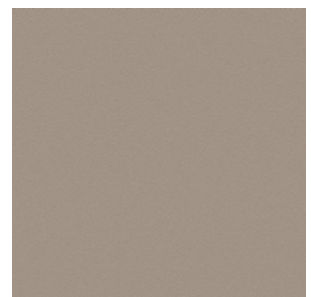
SC 258 Mist
SC 258 Nebbia



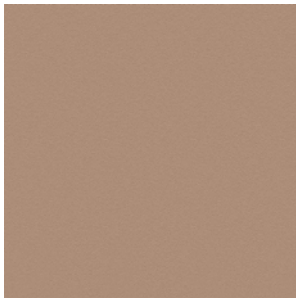
SC 233 Bardiglio
SC 233 Bardiglio



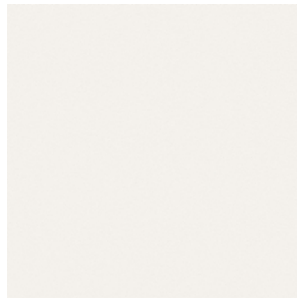
SC 279 Alchemy
SC 279 Alchimia



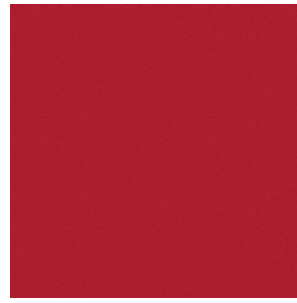
SC 34 Fallow
SC 34 Maggese



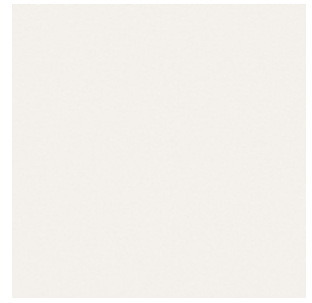
SC 46 Biscuit
SC 46 Biscotto



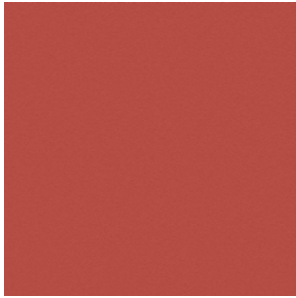
SC 0 Polar
SC 0 Polare



SC 127 Siam
SC 127 Siam



SC 28 Seppia
SC 28 Seppia



SC 96 Brick
SC 96 Mattone



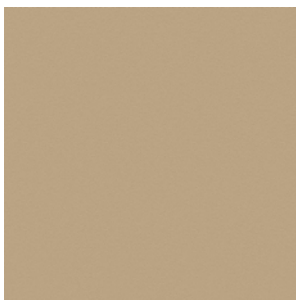
SC 80 Bruno L'avana
SC 80 Bruno Havana



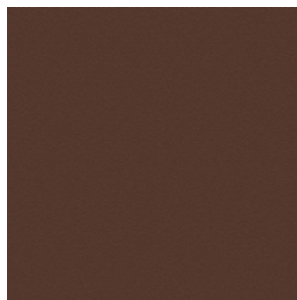
SC 48 Tonka
SC 48 Tonka



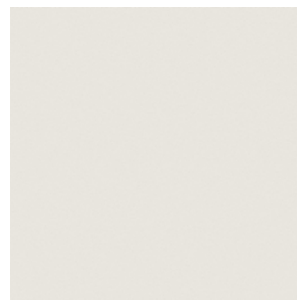
SC 55 Caramel Hair
SC 55 Capelli Caramello



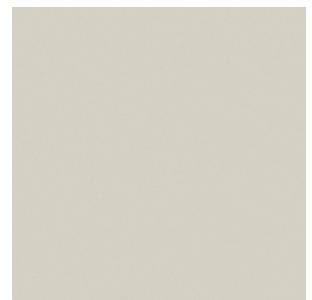
SC 53 Crete
SC 53 Creta



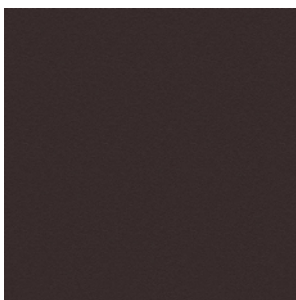
SC 59 Pecan Nut
SC 59 Noce di Pecan



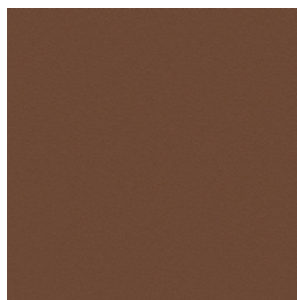
SC 04 White Milk
SC 04 Latte Bianco



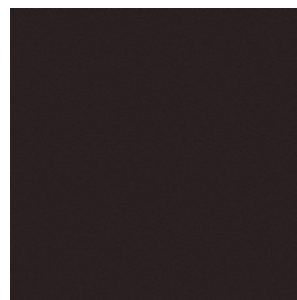
SC 21 Asbestos
SC 21 Amianto



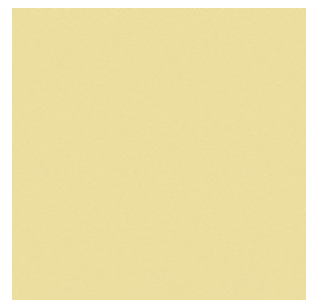
SC 29 Slate
SC 29 Ardesia



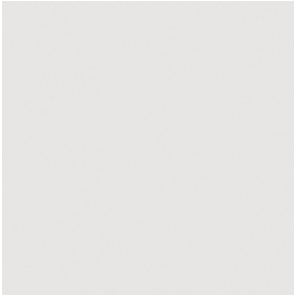
SC 57 Peat
SC 57 Torba



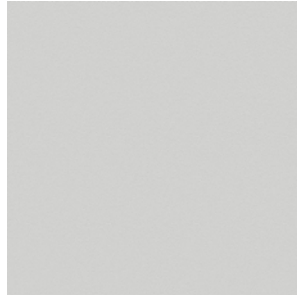
SC 100 Fondant
SC 100 Fondant



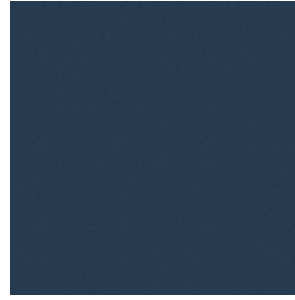
SC 132 Eggshell
SC 132 Guscio D'uovo



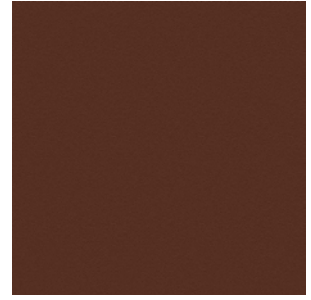
SC 19 Georgette
SC 19 Georgetta



SC 22 Chiffon
SC 22 Chiffon



SC 276 Mineral Blue
SC 276 Blu Minerale



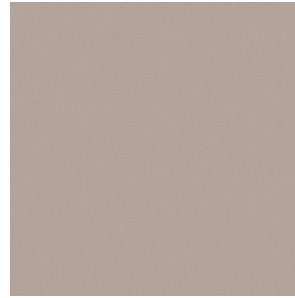
SC 69 Brown Iroko
SC 69 Iroko Marrone



SC 280 Abyss
SC 280 Abisso



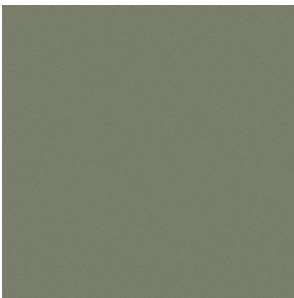
SC 32 Kaolin
SC 32 Caolino



SC 40 Cachmire
SC 40 Cachemire

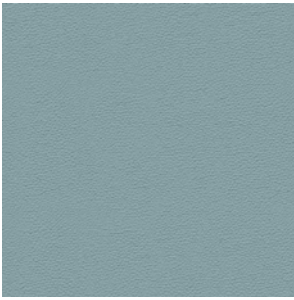


SC 68 Sahara Brown
SC 68 Sahara Marrone

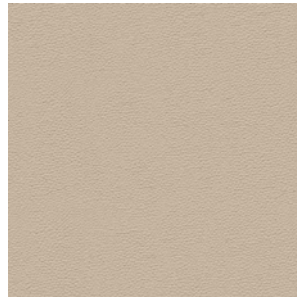


SC 180 Celadon
SC 180 Celadon

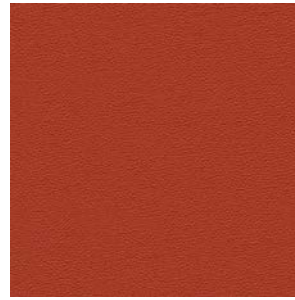
Pelle Frau® Nest



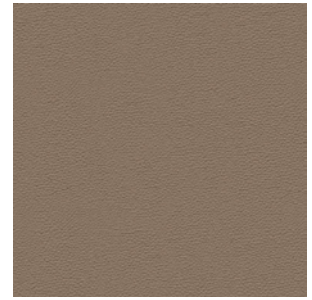
Chalcedony
Calcedonio



Mother Of Pearl
Madreperla



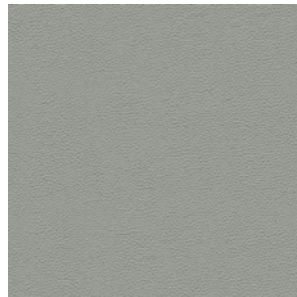
Mars
Marte



Sandstone
Arenaria



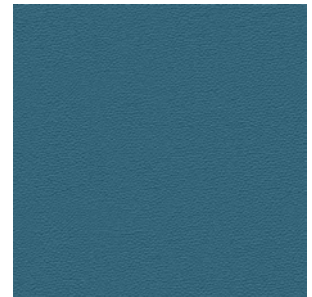
Amber
Ambra



Concrete
Cemento



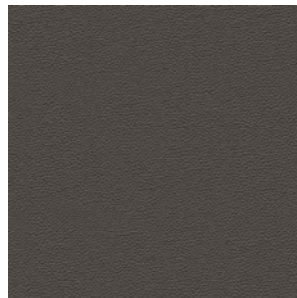
Moon
Luna



Blue
Azul



Clay
Argilla



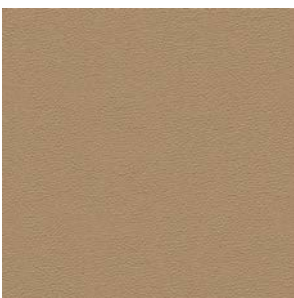
Graphite
Grafite



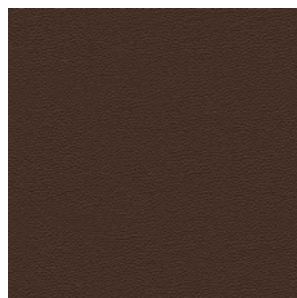
Malachite
Malachite



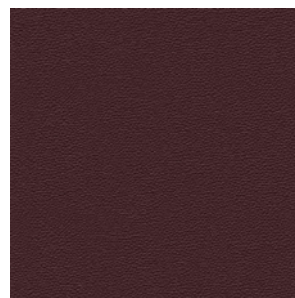
Silica
Silice



Tuff
Tufo



Ammonite
Ammonite

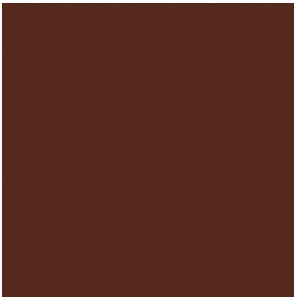


Garnet
Granato



Larimar
Larimar

Pelle Frau® Soul



Diana



Joe



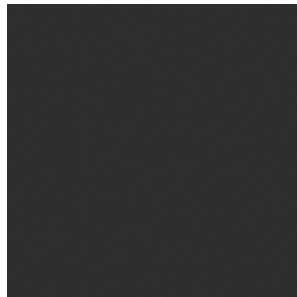
Amy



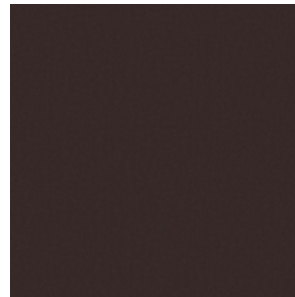
Whitney



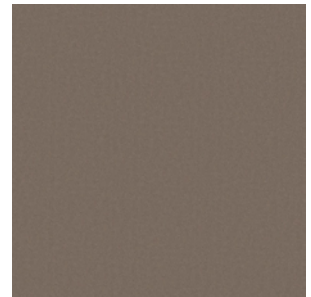
Nina



Otis



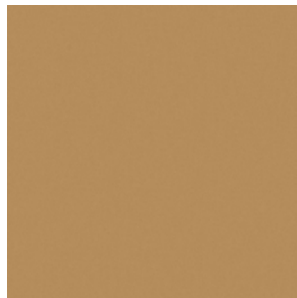
Ray



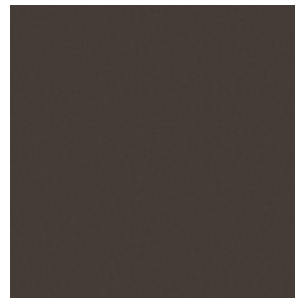
Smokey



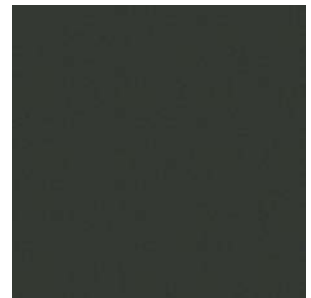
Wilson



Anita



Dusty



Stevie

Pelle Frau® Heritage



Acorn
Chianda



Black
Nero



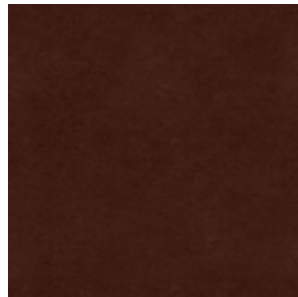
Mahagony
Mahagoni



Brown
Testa di Moro

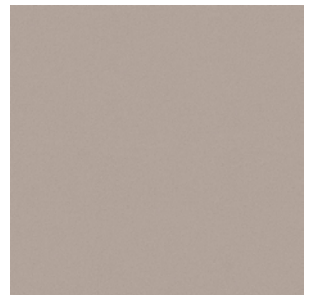
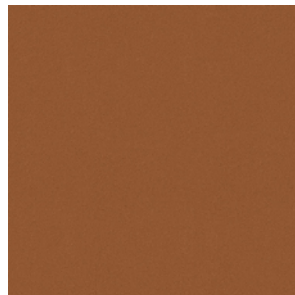
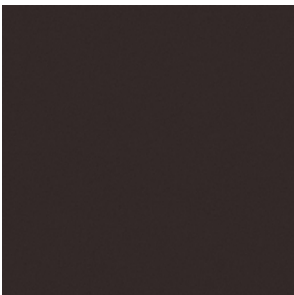
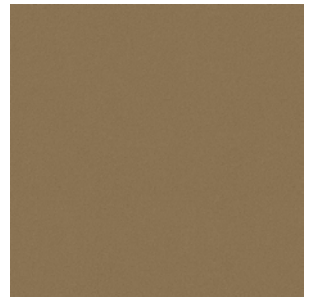
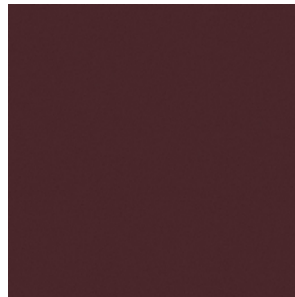
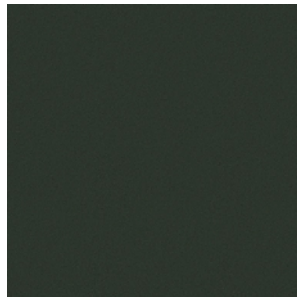
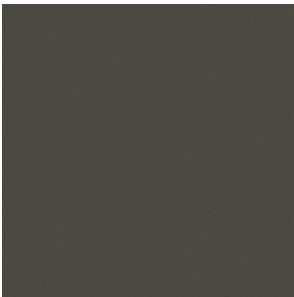
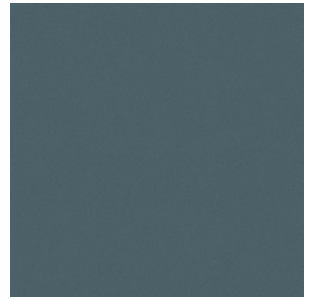
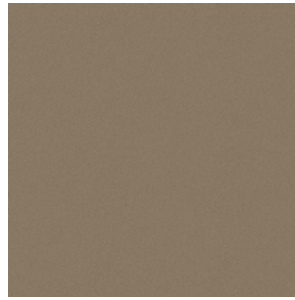
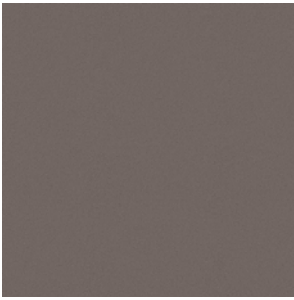


Bordeaux
Bordeaux



Chestnut
Castagno

Pelle Frau® Century



Pelle Frau® Cavallino

