

adrenalina



Technical sheet
Scheda tecnica

NATUR WOOL CAT. SUPER

IGNIFUGO
FIRE RETARDANT 



012

Composizione	Lana 80% Nylon 20%	Composition	Wool 80% Nylon 20%
Peso	600 gr/mtl	Weight	600 gr/lmt
Altezza	150 cm	Width	150 cm
Resistenza all'abrasione Martindale ISO 12947-2	>100.000 cicli	Abrasion test Martindale ISO 12947-2	>100.000 cycles
Solidità alla luce xeno - ISO 105 B12	chiaro 4/5 scuro 4	Lightfastness xeno - ISO 105 B02	light 4/5 dark 4
Certificati di resistenza al fuoco	EN 1021-1+2:2006 BS 5852 IS 0+1 California TB 117:2013 FTP Code 307(88):10 Annex 1 Part. 8 IMO RES.A. 652 (16)	Fiammability certificates	EN 1021-1+2:2006 BS 5852 IS 0+1 California TB 117:2013 FTP Code 307(88):10 Annex 1 Part. 8 IMO RES.A. 652 (16)
Su richiesta, metraggio minimo 200 mtl	NF-P 503 Classe M1 DIN 4102-1 Classe B1 BS 5852 IS CRIB 5	On demand, minimum quantity 200 lmt	NF-P 503 Class M1 DIN 4102-1 Class B1 BS 5852 IS CRIB 5
Manutenzione	 Solo lavaggio a secco. Non spazzolare. Usare con regolarità l'aspirapolvere a beccuccio liscio.	Maintenance	 Dry clean only. Do not brush. Use vacuum-cleaner with smooth spout regularly.
Particolarità	Materiale naturale che per le sue caratteristiche tecniche può formare pilling asportabile utilizzando una comune macchinetta mangiapelucchi.	Features	Natural material. For its technical features it could pill; in case use any fabric pilling shaver/remover.
Indicato per uso contract	Grado di resistenza all'uso: medio ●○○	Fabric for commercial and Horeca use	Wear and tear resistance: medium ●○○

adrenalina

NATUR WOOL CAT. SUPER

IGNIFUGO
FIRE RETARDANT 



101



400



100



002



406



004



800



006



005



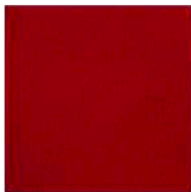
007



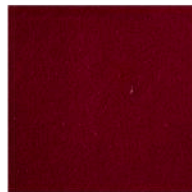
503



008



009



010



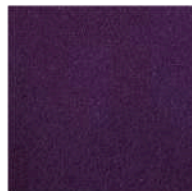
900



012



011



013



700



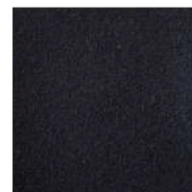
707



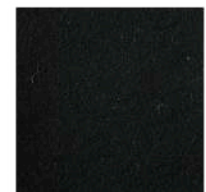
807



015



016



017

adrenalina

Technical sheet
Scheda tecnica

FLOWER CAT. ELEGANT

 BS 5852:1979
EN 1021-1+2:2006



547 MUSK

ALTRI COLORI DISPONIBILI SU RICHIESTA
OTHER COLORS AVAILABLE ON DEMAND

Solidità di resistenza alla luce artificiale

Energia di esposizione 16.000 kJ/m²

UNI EN ISO 105 B02 (MET.5)

> = 5 scala dei blu

Resistenza allo sfregamento

UNI EN ISO 11640

ISO 11641 pH8 (sudore alcalino)

secco 500 cicli > = 4 scala dei grigi

umido 250 cicli > = 4 scala dei grigi

sudore alcalino 80 cicli > = 4 scala dei grigi

Resistenza alle flessioni secco 50.000 cicli - UNI EN ISO 5402

Nessun danno

Resistenza alla strappo pantalone UNI EN ISO 3377-1

> = 20 N

Certificazioni di resistenza

al fuoco

BS 5852:1979

EN 1021-1+2:2006

Colour fastness to artificial light

Exposure energy 16.000 kJ/m²

UNI EN ISO 105 B02 (MET.5)

> = 5 blue scale

Colour fastness to rubbing

UNI EN ISO 11640

ISO 11641 pH8 (alkaline sweat)

dry 500 cycles > = 4 grey scale

wet 250 cycles > = 4 grey scale

alkaline sweat 80 cycles > = 4 grey scale

Dry flex endurance 50.000 cycles - UNI EN ISO 5402

No damage

Tear strength - single edge tear UNI EN ISO 3377-1

> = 20 N

Fire resistance

certifications

BS 5852:1979

EN 1021-1+2:2006



501 BIANCO
OTTICO



524 MAGNOLIA



535 CORNFLAKE



507 TERRA



529 FANGO



540 SLATE GREY



532 ECRU



519 ANTRACITE



516 NERO

Pelle bovina mezzo fiore stampata di provenienza europea. Spessore 0,8 - 1,0 mm. Superficie media 4,8 - 5,0 m².

Tintura passante. Rifinitura all'acqua con resine e pigmenti.

Pulizia: usare un panno morbido inumidito con acqua e sapone, poi asciugare subito con un panno morbido asciutto.

European cowhide, corrected and embossed for enhanced grain consistency, 0,8 - 1,0 mm thick. Average size of each hide is around 4,8 - 5,0 m². Through-dyed. Water-based finish with water and pigments.

Clean with a soft cloth dampened with water and soap, then dry with a soft cloth.

adrenalina

Technical sheet
Scheda tecnica

MOON CAT. EXTREME

 BS 5852:1979
EN 1021-1+2:2006



662 FONDOTINTA

ALTRI COLORI DISPONIBILI SU RICHIESTA
OTHER COLORS AVAILABLE ON DEMAND

Solidità del colore alla luce artificiale

Energia di esposizione 16.000 kJ/m²

UNI EN ISO 105 B02 (MET.5)

> = 5 scala dei blu

Resistenza allo sfregamento

UNI EN ISO 11640

ISO 11641 pH8 (sudore alcalino)

secco 500 cicli > = 4 scala dei grigi

umido 250 cicli > = 4 scala dei grigi

sudore alcalino 80 cicli > = 4 scala dei grigi

Resistenza alle flessioni secco 50.000 cicli - UNI EN ISO 5402

Nessun danno

Resistenza alla strappo pantalone UNI EN ISO 3377-1

> = 20 N

Certificazioni di resistenza

al fuoco

BS 5852:1979
EN 1021-1+2:2006

Colour fastness to artificial light

Exposure energy 16.000 kJ/m²

UNI EN ISO 105 B02 (MET.5)

> = 5 blue scale

Colour fastness to rubbing

UNI EN ISO 11640

ISO 11641 pH8 (alkaline sweat)

dry 500 cycles > = 4 grey scale

wet 250 cycles > = 4 grey scale

alkaline sweat 80 cycles > = 4 grey scale

Dry flex endurance 50.000 cycles - UNI EN ISO 5402

No damage

Tear strength - single edge tear UNI EN ISO 3377-1

> = 20 N

Fire resistance

certifications

BS 5852:1979
EN 1021-1+2:2006



601 BIANCO
OTTICO



637 CAFFELATTE



619 GIALLINO



660 ASFALTO




622 NERO

Pelle bovina mezzo fiore a grana naturale di provenienza europea. Spessore 0,9 - 1,1 mm. Superficie media 4,8 - 5,0 m². Tintura passante. Conciata al cromo, rifinitura è con resine e pigmenti. **Pulizia:** usare un panno morbido inumidito con acqua e sapone, poi asciugare subito con un panno morbido asciutto.

European lightly buffed natural grain cowhide, 0,9 - 1,1 mm thick. Average size of each hide is around 4,8 - 5,0 m². Through-dyed. Chrome-tanned, finished with resins and pigments.

Clean with a soft cloth dampened with water and soap, then dry right away with a soft cloth.

BASIC CAT. ELEGANT

 BS 5852:1979
EN 1021-1+2:2006



408 FUMO

ALTRI COLORI DISPONIBILI SU RICHIESTA
OTHER COLORS AVAILABLE ON DEMAND

Solidità di resistenza alla luce artificiale Energia di esposizione 16.000 kJ/m ² UNI EN ISO 105 B02 (MET.5)	> = 5 scala dei blu
Resistenza allo sfregamento UNI EN ISO 11640 ISO 11641 pH8 (sudore alcalino)	secco 500 cicli > = 4 scala dei grigi umido 250 cicli > = 4 scala dei grigi sudore alcalino 80 cicli > = 4 scala dei grigi
Resistenza alle flessioni secco 50.000 cicli - UNI EN ISO 5402	Nessun danno
Resistenza alla strappo pantalone UNI EN ISO 3377-1	> = 20 N
Certificazioni di resistenza al fuoco	BS 5852:1979 EN 1021-1+2:2006
Colour fastness to artificial light Exposure energy 16.000 kJ/m ² UNI EN ISO 105 B02 (MET.5)	> = 5 blue scale
Colour fastness to rubbing UNI EN ISO 11640 ISO 11641 pH8 (alkaline sweat)	dry 500 cycles > = 4 grey scale wet 250 cycles > = 4 grey scale alkaline sweat 80 cycles > = 4 grey scale
Dry flex endurance 50.000 cycles - UNI EN ISO 5402	No damage
Tear strength - single edge tear UNI EN ISO 3377-1	> = 20 N
Fire resistance certifications	BS 5852:1979 EN 1021-1+2:2006



401 BIANCO



417 RED



419 BURGUNDY



420 TESTA
DI MORO



422 ACQUA



440 DENIM



423 NERO

Pelle bovina mezzo fiore stampata di provenienza europea. Spessore 0,8 - 1,0 mm. Superficie media 4,8 - 5,0 m². Tintura passante. Rifinitura all'acqua con resine e pigmenti.

Pulizia usare un panno morbido inumidito con acqua e sapone, poi asciugare subito con un panno morbido asciutto.


European cowhide, corrected and embossed for enhanced grain consistency, 0,8 - 1,0 mm thick. Average size of each hide is around 4,8 - 5,0 m². Through-dyed. Water-based finish with water and pigments.

Clean with a soft cloth dampened with water and soap, then dry with a soft cloth.

adrenalina



Technical sheet
Scheda tecnica

AMARA CAT. ELEGANT

NON IGNIFUGO ●
NOT FIRE RETARDANT
IGNIFUGO ○
FIRE RETARDANT 



● 7575 GROSEILLE

Composizione	Poliestere FR 100%	Composition	Polyester FR 100%
Peso	Amara NON FEU 739 gr/mlt Amara 660 gr/mlt	Weight	Amara NON FEU 739 gr/lmt Amara 660 gr/lmt
Altezza	140 cm	Width	140 cm
Resistenza all'abrasione Martindale ISO 12947-2	Amara NON FEU 55.000 cicli Amara 100.000 cicli	Abrasion test Martindale ISO 12947-2	Amara NON FEU 55.000 cycles Amara 100.000 cycles
Solidità alla luce xeno - ISO 105 B02	Amara NON FEU 7 Amara 4/5	Lightfastness xeno - ISO 105 B02	Amara NON FEU 7 Amara 4/5
Certificati di resistenza al fuoco esclusi per i colori 7575-9191-111-103	UNI 9175 Classe 1IM UNI 9174 Classe 1 EN 1021-1+2:2006 NF-P 503 Classe M1	Fiammability certificates except colors 7575-9191-111-103	UNI 9175 Class 1IM UNI 9174 Class 1 EN 1021-1+2:2006 NF-P 503 Class M1
			
	1 Rimuovere l'eccesso di prodotto caduto sul divano; 2 Applicare l'acqua sulla macchia, direttamente o su carta inumidita o un panno assorbente; 3 Premere sulla macchia e sfregare delicatamente il tessuto con movimenti circolari; Ripetere se necessario.		1 Blot the fabric to remove any excess substance; 2 Apply water on the stain, directly or on moistened paper or an absorbent cloth; 3 Press on the stain and rub the fabric gently with circular movements. Repeat if necessary.
Manutenzione	Ripetere se necessario.	Maintenance	Ripetere se necessario.
Particolarità	Tecnologia AquaClean®: facilmente pulibile senza detersivo	Features	AquaClean® technology: easy to clean without detergent
Indicato per uso contract	Grado di resistenza all'uso: elevato ●●○ Particolarmente indicato per ristoranti, gelaterie e prodotti non sfoderabili	Fabric for commercial and Horeca use	Wear and tear resistance: high ●●○ Particularly suitable for restaurants, icecream parlours and for all items with nonremovable covers

adrenalina

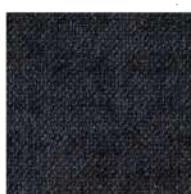
Technical sheet
Scheda tecnica

AMARA CAT. ELEGANT

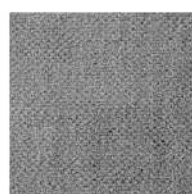
NON IGNIFUGO ●
NOT FIRE RETARDANT
IGNIFUGO ◉
FIRE RETARDANT



◉ 000 NF EBENE



◉ 064 NF ANTHRACITE



◉ 600 NF ARGENT



◉ 013 NF NEIGE



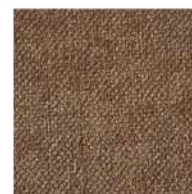
◉ 720 NF IVORIE



◉ 072 NF SABLE



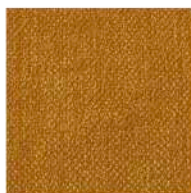
◉ 074 NF BEIGE



◉ 050 NF NOISETTE



◉ 770 NF TAUPE



◉ 420 NF SAFRAN



◉ 045 NF ORANGÉ



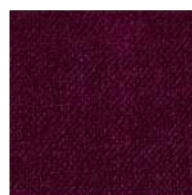
● 7575 GROSEILLE



◉ 070 NF RUBIS



● 9191 FUCHSIA



◉ 080 NF POURPRE



◉ 088 NF LILAS



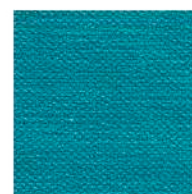
◉ 160 NF INDIGO



◉ 140 NF PÉTROLE



● 111 EAU VIVE



● 103 MER DU SUD



◉ 012 NF BLEU CANARD



◉ 330 NF VERT D'EAU



◉ 030 NF PISTACHE



◉ 320 NF AMANDE

adrenalina


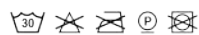
Technical sheet
Scheda tecnica

ANGEL CHEVY CAT. A

IGNIFUGO
FIRE RETARDANT 



703

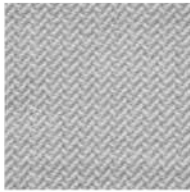
Composizione	Polipropilene FR 100%	Composition	Polypropylene FR 100%
Peso	490 gr/ml	Weight	490 gr/lmt
Altezza	140 cm	Width	140 cm
Resistenza all'abrasione Martindale ISO 12947-2	≥ 40.000 cicli	Abrasion test Martindale ISO 12947-2	≥ 40.000 cycles
Solidità alla luce xeno - ISO 105 B12	4-5	Lightfastness xeno - ISO 105 B12	4-5
	UNI 9175 Classe 11M UNI 9176 Classe 11M EN 1021-1+2:2006 BS 5852 IS CRIB 5 BS 7176:2007 NF D 60-013:2006 California TB 117:2013		UNI 9175 Class 11M UNI 9176 Class 11M EN 1021-1+2:2006 BS 5852 IS CRIB 5 BS 7176:2007 NF D 60-013:2006 California TB 117:2013
Certificati di resistenza al fuoco	FTP Code 307(88):10 Annex 1 Part. 8 IMO RES.A. 652 (16)	Fiammability certificates	FTP Code 307(88):10 Annex 1 Part. 8 IMO RES.A. 652 (16)
Manutenzione	 Consigliato lavaggio a secco	Maintenance	 Dry clean (suggested)
	Idrorepellente, antistatico, anallergico, antibatterico, irrestringibile.		Water repellent, antistatic, hypoallergenic, antibacterial, no-shrink.
Particolarità	Coordinabile con ANGEL COMBO e ANGEL JUMBO.	Features	Can be matched with ANGEL COMBO and ANGEL JUMBO.
Indicato per uso contract	Grado di resistenza all'uso: elevato ●●○	Fabric for commercial and Horeca use	Wear and tear resistance: high ●●○

adrenalina

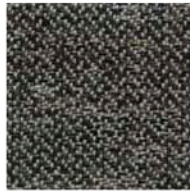
Technical sheet
Scheda tecnica

ANGEL CHEVY CAT. A

IGNIFUGO
FIRE RETARDANT 



100



600



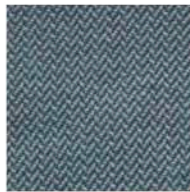
201



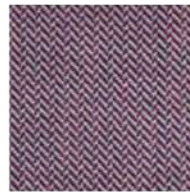
702



703



701



001



300



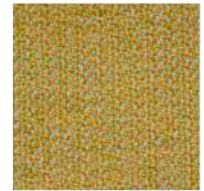
309



307



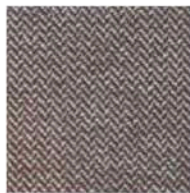
306



508



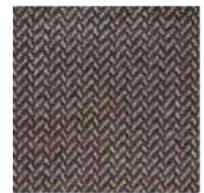
801



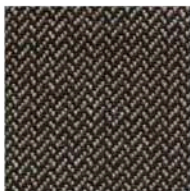
102



401



400



404



405

adrenalina



Technical sheet
Scheda tecnica

ANGEL COMBO CAT. A

IGNIFUGO
FIRE RETARDANT 



706

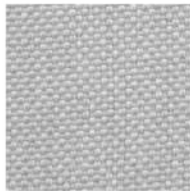
Composizione	Polipropilene FR 100%	Composition	Polypropylene FR 100%
Peso	490 gr/mtl	Weight	490 gr/mt
Altezza	140 cm	Width	140 cm
Resistenza all'abrasione Martindale ISO 12947-2	≥ 50.000 cicli	Abrasion test Martindale ISO 12947-2	≥ 50.000 cycles
Solidità alla luce xeno - ISO 105 B12	4-5	Lightfastness xeno - ISO 105 B12	4-5
Certificati di resistenza al fuoco	UNI 9175 Classe 1IM UNI 9176 Classe 1IM EN 1021-1+2:2006 BS 5852 IS CRIB 5 BS 7176:2007 NF D 60-013:2006 California TB 117:2013 FTP Code 307(88):10 Annex 1 Part. 8 IMO RES.A. 652 (16)	Fiammability certificates	UNI 9175 Class 1IM UNI 9176 Class 1IM EN 1021-1+2:2006 BS 5852 IS CRIB 5 BS 7176:2007 NF D 60-013:2006 California TB 117:2013 FTP Code 307(88):10 Annex 1 Part. 8 IMO RES.A. 652 (16)
Manutenzione	 Consigliato lavaggio a secco	Maintenance	 Dry clean (suggested)
Particolarità	Idrorepellente, antistatico, anallergico, antibatterico, irrestringibile.	Features	Water repellent, antistatic, hypoallergenic, antibacterial, no-shrink.
Indicato per uso contract	Coordinabile con ANGEL JUMBO e ANGEL CHEVY. Grado di resistenza all'uso: elevato ●●○	Fabric for commercial and Horeca use	Can be matched with ANGEL JUMBO and ANGEL CHEVY. Wear and tear resistance: high ●●○

adrenalina

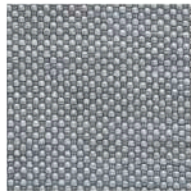
Technical sheet
Scheda tecnica

ANGEL COMBO CAT. A

IGNIFUGO
FIRE RETARDANT 



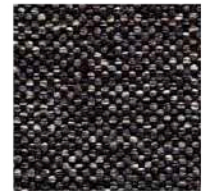
111



600



601



408



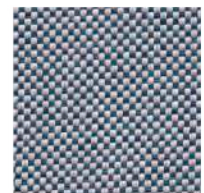
200



705



706



701



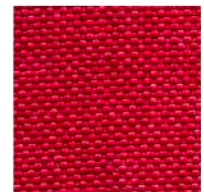
001



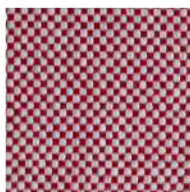
900



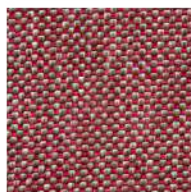
306



300



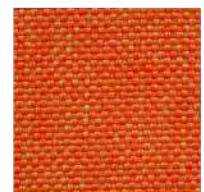
301



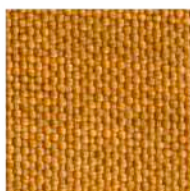
302



308



307



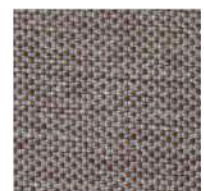
500



802



803



401



102



402



407



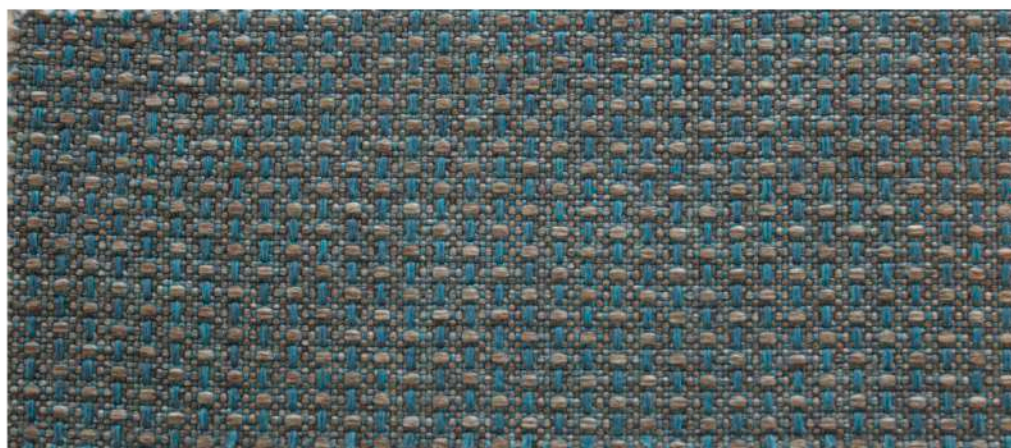
406

adrenalina



Technical sheet
Scheda tecnica

ANGEL JUMBO CAT. A

IGNIFUGO
FIRE RETARDANT 



706

Composizione	Polipropilene FR 100%	Composition	Polypropylene FR 100%
Peso	490 gr/mlt	Weight	490 gr/lmt
Altezza	140 cm	Width	140 cm
Resistenza all'abrasione Martindale ISO 12947-2	≥ 33.000 cicli	Abrasion test Martindale ISO 12947-2	≥ 33.000 cycles
Solidità alla luce xeno - ISO 105 B12	4-5	Lightfastness xeno - ISO 105 B12	4-5
Certificati di resistenza al fuoco	UNI 9175 Classe 1IM UNI 9176 Classe 1IM EN 1021-1+2:2006 BS 5852 IS CRIB 5 BS 7176:2007 NF D 60-013:2006 California TB 117:2013 FTP Code 307(88):10 Annex 1 Part. 8 IMO RES.A. 652 (16)	Fiammability certificates	UNI 9175 Class 1IM UNI 9176 Class 1IM EN 1021-1+2:2006 BS 5852 IS CRIB 5 BS 7176:2007 NF D 60-013:2006 California TB 117:2013 FTP Code 307(88):10 Annex 1 Part. 8 IMO RES.A. 652 (16)
Manutenzione	 Consigliato lavaggio a secco	Maintenance	 Dry clean (suggested)
Particolarità	Idrorepellente, antistatico, anallergico, antibatterico, irrestringibile.	Features	Water repellent, antistatic, hypoallergenic, antibacterial, no-shrink.
Indicato per uso contract	Coordinabile con ANGEL COMBO e ANGEL CHEVY. Grado di resistenza all'uso: elevato ●●○	Fabric for commercial and Horeca use	Can be matched with ANGEL COMBO and ANGEL CHEVY. Wear and tear resistance: high ●●○

adrenalina

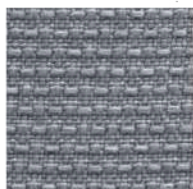
Technical sheet
Scheda tecnica

ANGEL JUMBO CAT. A

IGNIFUGO
FIRE RETARDANT 



111



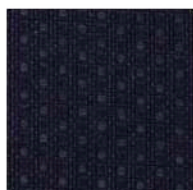
600



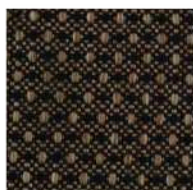
601



200



701



702



700



706



904



301



303



302



300



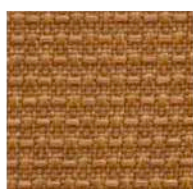
308



307



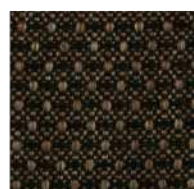
504



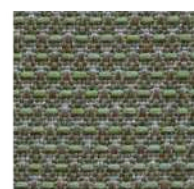
500



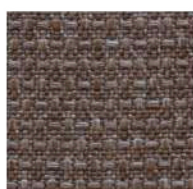
801



802



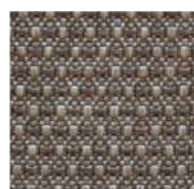
803



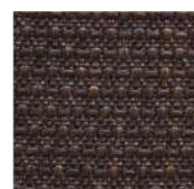
400



401



402



404

adrenalina

Technical sheet
Scheda tecnica



EUROPOST 2 CAT. ELEGANT

IGNIFUGO
FIRE RETARDANT 



67066



Composizione	Lana della Nuova Zelanda 100%	Composition	Wool of New Zealand 100%
Peso	800 gr/mtl	Weight	800 gr/lmt
Altezza	140 cm	Width	140 cm
Resistenza all'abrasione Martindale ISO 12947-2/ISO 14465	50.000 cicli	Abrasion test Martindale ISO 12947-2/ISO 14465	50.000 cycles
Solidità alla luce xeno - ISO 105 B02	5-7	Lightfastness xeno - ISO 105 B02	5-7
Certificati di acustica e fonoassorbenza	ISO 354 EN 29053	Acoustic test sound absorption and air flow resistance	ISO 354 EN 29053
	UNI 9175 Classe 11M EN 1021-1+2:2006 DIN 4102 Classe B2 BS 5852 IS 0+1 BS 476 Part. 7 Classe 1 California TB 117:2013 NFPA 286 B1-B2 Önorm B 3825 - Q1 Önorm A 3800 FTP Code 307(88):10 Annex 1 Part. 8 IMO RES.A. 652 (16) MED certificate IMO ASTM E 84		UNI 9175 Class 11M EN 1021-1+2:2006 DIN 4102 Class B2 BS 5852 IS 0+1 BS 476 Part. 7 Class 1 California TB 117:2013 NFPA 286 B1-B2 Önorm B 3825 - Q1 Önorm A 3800 FTP Code 307(88):10 Annex 1 Part. 8 IMO RES.A. 652 (16) MED certificate IMO ASTM E 84
Certificati di resistenza al fuoco		Fiammability certificates	
			
Manutenzione	Non spazzolare. Usare con regolarità l'aspirapolvere a beccuccio liscio.	Maintenance	Do not brush. Use vacuum-cleaner with smooth spout regularly.
Particolarità	Fonoassorbente. Materiale naturale che per le sue caratteristiche tecniche può formare pilling asportabile utilizzando una comune macchinetta mangiapelucchi.	Features	Sound absorbing. Natural material. For its technical features it could pill; in case use any fabric pilling shaver/remover.
Indicato per uso contract	Grado di resistenza all'uso: intenso ●●●	Fabric for commercial and Horeca use	Wear and tear resistance: extreme ●●●

adrenalina

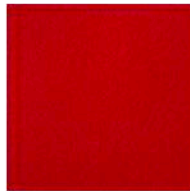
Technical sheet
Scheda tecnica

EUROPOST 2 CAT. ELEGANT

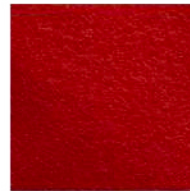
IGNIFUGO
FIRE RETARDANT 



62061



64070



63004



63072



64150



64068



64045



65071



65069



65070



66119



66117



66039



65072



67066



68003



68030



68035



62060



61107



61004



60999



60016



60003

FENICE CAT. EXTRA

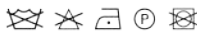
IGNIFUGO
FIRE RETARDANT 



454



tessuto riciclabile
recyclable fabric

Composizione	Lana 75% Poliammide 25%	Composition	Wool 75% Polyammide 25%
Peso	500 gr/mtl ± 7%	Weight	500 gr/lmt ± 7%
Altezza	150 cm ± 5%	Width	150 cm ± 5%
Resistenza all'abrasione Martindale ISO 12947-2	100.000 cicli ± 20%	Abrasion test Martindale ISO 12947-2	100.000 cycles ± 20%
Solidità alla luce xeno - ISO 105 B02	4 ± 1	Lightfastness xeno - ISO 105 B02	4 ± 1
Certificati di resistenza al fuoco	UNI 9175 Classe 11M EN 1021-1+2:2006 California TB 117:2013	Fiammability certificates	UNI 9175 Class 11M EN 1021-1+2:2006 California TB 117:2013
Manutenzione	 Non spazzolare. Usare con regolarità l'aspirapolvere a beccuccio liscio.	Maintenance	 Do not brush. Use vacuum-cleaner with smooth spout regularly.
Particolarità	Materiale naturale che per le sue caratteristiche tecniche può formare pilling asportabile utilizzando una comune macchinetta mangiapelucchi.	Features	Natural material. For its technical features it could pill; in case use any fabric pilling shaver/remover.
Indicato per uso contract	Grado di resistenza all'uso: intenso ●●●	Fabric for commercial and Horeca use	Wear and tear resistance: extreme ●●●

adrenalina

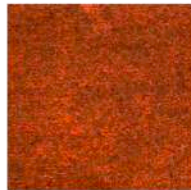
Technical sheet
Scheda tecnica

FENICE CAT. EXTRA

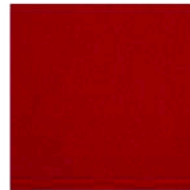
IGNIFUGO
FIRE RETARDANT 



102



103



203



202



252



251



301



351



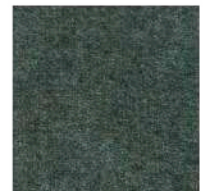
303



454



455



453



452



052



551



503



505



601



602



603



651

adrenalina

Technical sheet
Scheda tecnica

HAPPY CAT. B / CAT. A

IGNIFUGO
FIRE RETARDANT 



667 CAT. B

Composizione	PVC plastificato 88% Poliestere 12%	Composition	Plastified PVC 88% Polyester 12%
Peso	770 gr/mlt ± 50%	Weight	770 gr/mlt ± 50%
Altezza	138-140 cm	Width	138-140 cm
Resistenza all'abrasione Martindale ISO 12947-2	50.000 cicli	Abrasion test Martindale ISO 12947-2	50.000 cycles
Solidità alla luce xeno - ISO 105 B02	7	Lightfastness xeno - ISO 105 B02	7
Certificati di resistenza al fuoco	UNI 9175 Classe 1IM UNI 9175/FA 1 Classe 1IM EN 1021-1+2:2006 FTP Code 307(88):10 Annex 1 Part. 8 IMO RES.A. 652 (16)	Fiammability certificates	UNI 9175 Class 1IM UNI 9175/FA 1 Class 1IM EN 1021-1+2:2006 FTP Code 307(88):10 Annex 1 Part. 8 IMO RES.A. 652 (16)
Manutenzione	   Pulire con panno inumidito ed insaponato, poi sciacquare bene con acqua. Non usare solventi, candeggine e detergenti chimici o spray per lucidare.	Maintenance	   Clean with damp soapy cloth, then rinse well with water. Do not use solvents, bleaches, synthetic detergents, polishes or spray.
Particolarità	Antimicotico, antibatterico.	Particularity	Antimycotic, antibacterial.
Indicato per uso contract	I colori perlati non sono indicati per applicazioni che prevedono intensi sfregamenti.	Fabric for commercial and Horeca use	Pearl colours are not suitable if used under intense rubbing.
Attenzione	Grado di resistenza all'uso: elevato ●●○ La pelle sintetica ha caratteristiche di assorbenza ed è soggetta a trasferimenti di colore. Si potrebbe macchiare indelebilmente in caso di: contatto con finta pelle scura, contatto con jeans blu/neri o capi di abbigliamento non trattati e inchiostro di penna. La garanzia sul prodotto non copre questo tipo di danni.	Warning	Wear and tear resistance: high ●●○ Artificial leather absorbs easily and is subject to color transfers. It may be indelibly stained if it comes into contact with: dark imitation leather, blue/black jeans or untreated clothes and pen ink. The product warranty does not cover this type of damages.

adrenalina

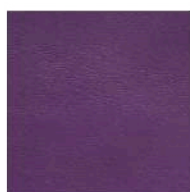
Technical sheet
Scheda tecnica

HAPPY CAT. B / CAT. A

IGNIFUGO
FIRE RETARDANT 



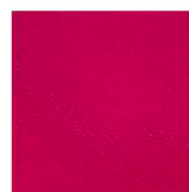
5947 CAT. B



5948 CAT. B



569 CAT. B



667 CAT. B



680 CAT. B



508 CAT. B



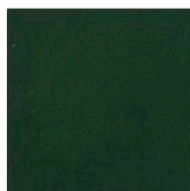
041 CAT. B



1816 CAT. B



833 CAT. B



1831 CAT. B



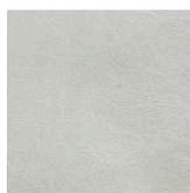
4947 CAT. B



5946 CAT. B



1944 CAT. B



4008 CAT. B



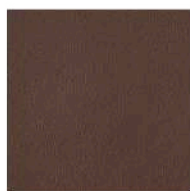
4933 CAT. B



991 CAT. B



477 CAT. B



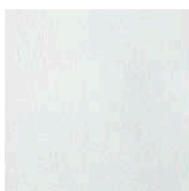
430 CAT. B



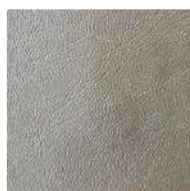
1120 CAT. B



151 CAT. B



006 CAT. B



1166 CAT. A



010 CAT. A



1925 CAT. A

adrenalina




Technical sheet
Scheda tecnica

LEMMING 29500 CAT. ELEGANT

IGNIFUGO
FIRE RETARDANT 



92 ROSA ANTICO

Composizione	Poliestere FR 100%	Composition	Polyester FR 100%
Peso	560 gr/mtl	Weight	560 gr/lmt
Altezza	140 cm	Width	140 cm
Resistenza all'abrasione Martindale ISO 12947-2	50.000 cicli	Abrasion test Martindale ISO 12947-2	50.000 cycles
Solidità alla luce xeno - ISO 105 B02	≥ 5	Lightfastness xeno - ISO 105 B02	≥ 5
Certificati di resistenza al fuoco	UNI 9175 Classe 1IM UNI 9174 Classe 1 EN 1021-1+2:2006 NF-P 503 Classe M1 BS 5852 IS 0+1	Fiammability certificates	UNI 9175 Class 1IM UNI 9174 Class 1 EN 1021-1+2:2006 NF-P 503 Class M1 BS 5852 IS 0+1
Manutenzione	    	Maintenance	    
Indicato per uso contract	Grado di resistenza all'uso: intenso ●●●	Fabric for commercial and Horeca use	Wear and tear resistance: extreme ●●●

adrenalina

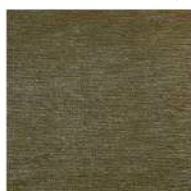
Technical sheet
Scheda tecnica

LEMMING 29500 CAT. ELEGANT

IGNIFUGO
FIRE RETARDANT 



73 ECRU



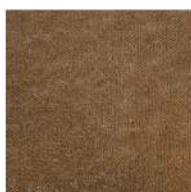
76 SABBIA



43 SENAPE



46 VOLPE ROSSA



50 CAPPUCCINO



52 BRONZO



55 MOKA



97 VIOLA PORPORA



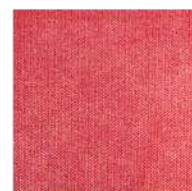
95 PEONIA



75 CILIEGIA



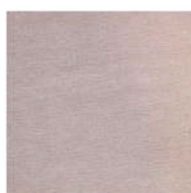
94 FUCSIA



93 FRAGOLA



92 ROSA ANTICO



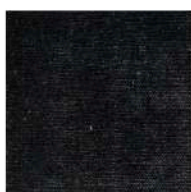
74 ROSA DEL DESERTO



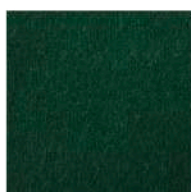
62 FUMO



77 TALPA



00 NERO



37 VERDE BOTTIGLIA



34 MUSCHIO



35 ERBA



10 MINERALE



12 LAVANDA



14 TURCHESE



16 BLU COBALTO

adrenalina

Technical sheet
Scheda tecnica

LUNA/Z CS CAT. ELEGANT

IGNIFUGO
FIRE RETARDANT 



307

Composizione	Poliestere FR 100% 	Composition	Polyester FR 100% 
Peso	605 gr/mtl	Weight	605 gr/mt
Altezza	138-140 cm	Width	138-140 cm
Resistenza all'abrasione Martindale ISO 12947-2	100.000 cicli	Abrasion test Martindale ISO 12947-2	100.000 cycles
Solidità alla luce xeno - ISO 105 B02	4/5	Lightfastness xeno - ISO 105 B02	4/5
Certificati di resistenza al fuoco	UNI 9175 Classe 1IM EN 1021-1+2:2006 EN 13733 Classe 1 NF-P 503 Classe M1 DIN 4102 Classe B1 BS 5852 IS CRIB 5 BS 5852 IS 0+1 BS 7155 California TB 117:2013 NFPA 701:2010 IMO 7-8 SNV 198898	Fiammability certificates	UNI 9175 Class 1IM EN 1021-1+2:2006 EN 13733 Class 1 NF-P 503 Class M1 DIN 4102 Class B1 BS 5852 IS CRIB 5 BS 5852 IS 0+1 BS 7155 California TB 117:2013 NFPA 701:2010 IMO 7-8 SNV 198898
Manutenzione	 Pulire con trielina o con detergenti a secco	Maintenance	 Clean with trichlorethylene or dry cleaners
Particolarità	Coordinabile con Sole CS	Features	Can be matched with Sole CS
Indicato per uso contract	Grado di resistenza all'uso: intenso ●●●	Fabric for commercial and Horeca use	Wear and tear resistance: extreme ●●●

adrenalina

Technical sheet
Scheda tecnica

LUNA/Z CS CAT. ELEGANT

IGNIFUGO
FIRE RETARDANT 



1712



1713



707



1714



001



317



1717



1716



028



1706



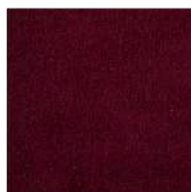
1704



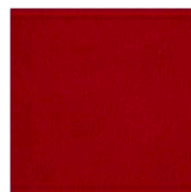
1702



025



1708



307



1703



1705



1710

adrenalina

Technical sheet
Scheda tecnica

LUNA/Z CS CAT. ELEGANT

IGNIFUGO
FIRE RETARDANT 



307

Composizione	Poliestere FR 100% 	Composition	Polyester FR 100% 
Peso	605 gr/mtl	Weight	605 gr/mt
Altezza	138-140 cm	Width	138-140 cm
Resistenza all'abrasione Martindale ISO 12947-2	100.000 cicli	Abrasion test Martindale ISO 12947-2	100.000 cycles
Solidità alla luce xeno - ISO 105 B02	4/5	Lightfastness xeno - ISO 105 B02	4/5
Certificati di resistenza al fuoco	UNI 9175 Classe 1IM EN 1021-1+2:2006 EN 13733 Classe 1 NF-P 503 Classe M1 DIN 4102 Classe B1 BS 5852 IS CRIB 5 BS 5852 IS 0+1 BS 7155 California TB 117:2013 NFPA 701:2010 IMO 7-8 SNV 198898	Fiammability certificates	UNI 9175 Class 1IM EN 1021-1+2:2006 EN 13733 Class 1 NF-P 503 Class M1 DIN 4102 Class B1 BS 5852 IS CRIB 5 BS 5852 IS 0+1 BS 7155 California TB 117:2013 NFPA 701:2010 IMO 7-8 SNV 198898
Manutenzione	 Pulire con trielina o con detergenti a secco	Maintenance	 Clean with trichlorethylene or dry cleaners
Particolarità	Coordinabile con Sole CS	Features	Can be matched with Sole CS
Indicato per uso contract	Grado di resistenza all'uso: intenso ●●●	Fabric for commercial and Horeca use	Wear and tear resistance: extreme ●●●

adrenalina

Technical sheet
Scheda tecnica

LUNA/Z CS CAT. ELEGANT

IGNIFUGO
FIRE RETARDANT 



1712



1713



707



1714



001



317



1717



1716



028



1706



1704



1702



025



1708



307



1703



1705



1710

adrenalina

Technical sheet
Scheda tecnica

MIRAGE CAT. A

IGNIFUGO
FIRE RETARDANT 



175



Composizione	Poliestere FR 100% 	Composition	Polyester FR 100% 
Peso	460 gr/mlt ± 10%	Weight	460 gr/mlt ± 10%
Altezza	140 cm ± 2%	Width	140 cm ± 2%
Resistenza all'abrasione Martindale ISO 12947-2	100.000 cicli ± 20%	Abrasion test Martindale ISO 12947-2	100.000 cycles ± 20%
Solidità alla luce xeno - ISO 105 B02	5/6 ± 1/2	Lightfastness xeno - ISO 105 B02	5/6 ± 1/2
	UNI 9175 Classe 1IM EN 1021-1+2:2006 EN 13773 Classe 1 EN 13501-1 ^{1,2} : B-s1, d0 EN ISO 6940/6941 NF-P 503 Classe M1 DIN 4102 Classe B1 B1 Önorm B 3825 Q1 Önorm A 3800 BS 5852 IS CRIB 5 California TB 117:2013 IMO A.688 (17) IMO A.563 (14) FTP Code 307(88):10 Annex 1 Part. 8 IMO RES.A. 652 (16) FAR 25.853		UNI 9175 Class 1IM EN 1021-1+2:2006 EN 13773 Class 1 EN 13501-1 ^{1,2} : B-s1, d0 EN ISO 6940/6941 NF-P 503 Class M1 DIN 4102 Class B1 B1 Önorm B 3825 Q1 Önorm A 3800 BS 5852 IS CRIB 5 California TB 117:2013 IMO A.688 (17) IMO A.563 (14) FTP Code 307(88):10 Annex 1 Part. 8 IMO RES.A. 652 (16) FAR 25.853
Certificati di resistenza al fuoco	Fire Protection Classification: 5.3	Fiammability certificates	Fire Protection Classification: 5.3
			
Manutenzione	Non spazzolare. Usare con regolarità l'aspirapolvere a beccuccio liscio.	Maintenance	Do not brush. Use vacuum-cleaner with smooth spout regularly.
Particolarità	Elastico, adatto per rivestire forme stondate	Features	Elastic, suitable for rounded shapes
Indicato per uso contract	Grado di resistenza all'uso: medio ●○○	Fabric for commercial and Horeca use	Wear and tear resistance: medium ●○○

adrenalina

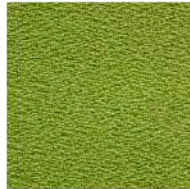
Technical sheet
Scheda tecnica

MIRAGE CAT. A

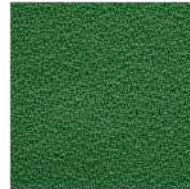
IGNIFUGO
FIRE RETARDANT 



462



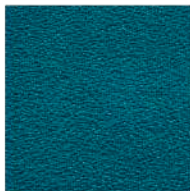
464



443



496



411



367



386



263



333



173



234



231



180



133



053



532



533



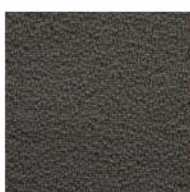
534



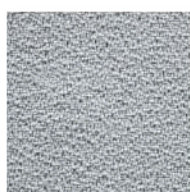
569



571



625



643



999



651

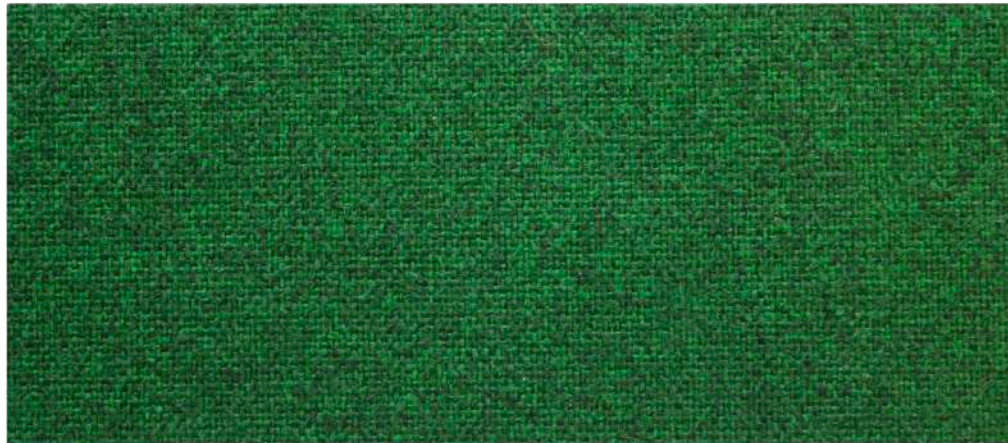
adrenalina

Technical sheet
Scheda tecnica

NEMI MELANGE

CAT. LUSO

IGNIFUGO
FIRE RETARDANT 



1494



Composizione	Poliestere FR 100% 	Composition	Polyester FR 100% 
Peso	405 gr/mtl ± 5%	Weight	405 gr/mt ± 5%
Altezza	140 cm ± 2%	Width	140 cm ± 2%
Resistenza all'abrasione Martindale ISO 12947-2	60.000 cicli ± 20%	Abrasion test Martindale ISO 12947-2	60.000 cycles ± 20%
Solidità alla luce xeno - ISO 105 B02	5 ± 1	Lightfastness xeno - ISO 105 B02	5 ± 1
	UNI 9175 Classe 1IM EN 1021-1+2:2006 EN 13773 Classe 1 EN 13501-1 ^{1,2} :B-s1, d0 NF-P 503 Classe M1 DIN 4102 Classe B1 BS 5852 IS CRIB 5 California TB 117:2013 IMO A.688 (17) IMO A.563 (14) FTP Code 307(88):10 Annex 1 Part. 8 IMO RES.A. 652 (16) FAR 25.853		UNI 9175 Class 1IM EN 1021-1+2:2006 EN 13773 Class 1 EN 13501-1 ^{1,2} :B-s1, d0 NF-P 503 Class M1 DIN 4102 Class B1 BS 5852 IS CRIB 5 California TB 117:2013 IMO A.688 (17) IMO A.563 (14) FTP Code 307(88):10 Annex 1 Part. 8 IMO RES.A. 652 (16) FAR 25.853
Certificati di resistenza al fuoco		Fiammability certificates	
	    		    
Manutenzione	Non spazzolare. Usare con regolarità l'aspirapolvere a beccuccio liscio.	Maintenance	Do not brush. Use vacuum-cleaner with smooth spout regularly.
Indicato per uso contract	Grado di resistenza all'uso: elevato ●●○	Fabric for commercial and Horeca use	Wear and tear resistance: high ●●○

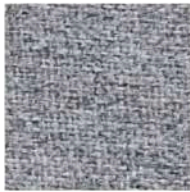
adrenalina

Technical sheet
Scheda tecnica

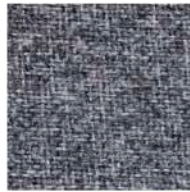
NEMI MELANGE

CAT. LUSSO

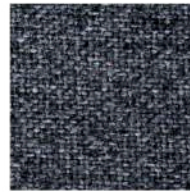
IGNIFUGO
FIRE RETARDANT 



2999



1999



1620



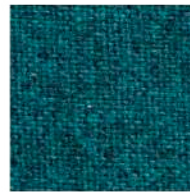
1433



1316



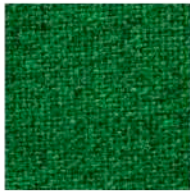
1317



1418



1495



1494



1053



2505



1556



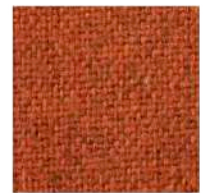
1569



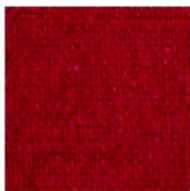
1558



1118



2113



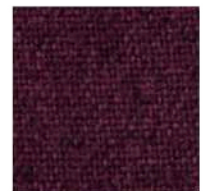
2216



1216



1156



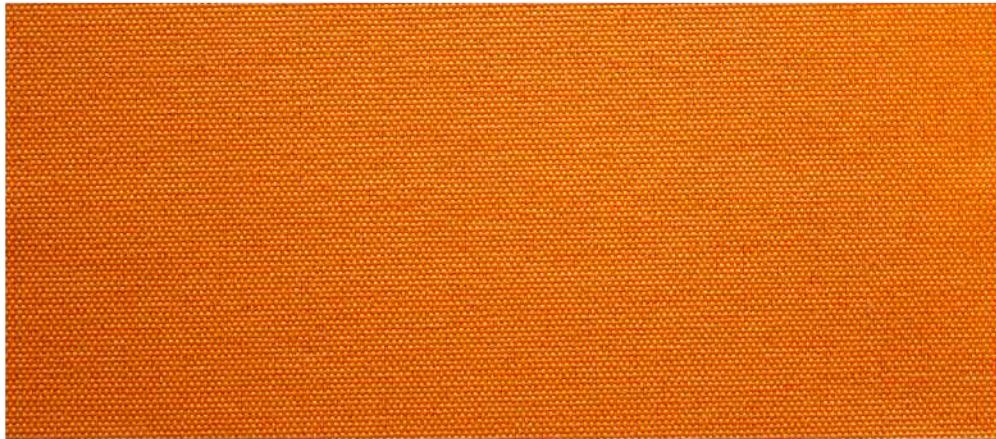
1260

adrenalina

Technical sheet
Scheda tecnica

PARASOL 100 CAT. A

OUTDOOR



SENAPE



Composizione	Polipropilene FR 100%	Composition	Polypropylene FR 100%
Peso	208 gr/mtl	Weight	208 gr/lmt
Altezza	160 cm	Width	160 cm
Resistenza all'abrasione Martindale ISO 12947-2	>50.000 cicli	Abrasion test Martindale ISO 12947-2	>50.000 cycles
Solidità alla luce xeno - ISO 105 B02	8/8	Lightfastness xeno - ISO 105 B02	8/8
Manutenzione	 Lavare con sapone neutro e risciacquare con acqua	Maintenance	 Clean with mild soap and rinse with lukewarm water
Certificati di resistenza al fuoco	UNI 9175 Classe 1IM UNI 9174 Classe 2 UNI 8456 Classe 2 FTP Code 307(88):10 Annex 1 Part. 8	Fiammability certificates	UNI 9175 Class 1IM UNI 9174 Class 2 UNI 8456 Class 2 FTP Code 307(88):10 Annex 1 Part. 8
Particolarità	Idrofobico, idrorepellente, antimuffa, antimicotico, antibatterico. Resistente ad agenti chimici, sudore ed alle piogge acide. Asciuga in tempi rapidi, adatto per uso esterno. Su richiesta: versione impermeabile con applicazione di membrana sul lato interno (prezzo su richiesta).	Features	Hydrophobic, water repellent, mildew resistant, anti-fungal, anti-bacterial. Resistant to chemicals, sweat and acid rain. Dries quickly, suitable for outdoor use. On demand: waterproof version with membrane on the inner side (price on demand).
Indicato per uso contract	Grado di resistenza all'uso: elevato ●●○	Fabric for commercial and Horeca use	Wear and tear resistance: high ●●○

adrenalina

Technical sheet
Scheda tecnica

PARASOL 100 CAT. A

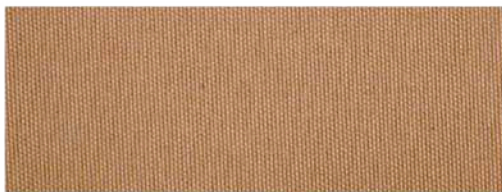
OUTDOOR



WHITE CANVAS



CHAMPAGNE



DUNE



BEIGE



TAUPE



SENAPE



SKY BLUE



NAVY BLUE



CADET GREY

adrenalina

Technical sheet
Scheda tecnica

POLARIS PRO





CAT. A / CAT.LUSSO

IGNIFUGO
FIRE RETARDANT 



4738 CAT. A



Composizione	PVC plastificato 90,5% Poliammide testurizzato 9,5%	Composition	Plastified PVC 90,5% Texturized polyamide 9,5%
Peso	966 gr/mtl ± 10%	Weight	966 gr/lmt ± 10%
Altezza	138 cm	Width	138 cm
Resistenza all'abrasione Martindale ISO 5470-2	>=100.000 cicli	Abrasion test Martindale ISO 5470-2	>=100.000 cycles
Solidità alla luce xeno - ISO 105 B02	>=6	Lightfastness xeno - ISO 105 B02	>=6
Certificati di resistenza al fuoco	UNI 9175 Classe 1IM UNI 9176 Classe 1IM EN 1021-1+2:2006 NF-P 503 Classe M2 BS 5852 IS CRIB 5 BS 7176:2007 California TB 117:2013 FAR 25.853	Fiammability certificates	UNI 9175 Class 1IM UNI 9176 Class 1IM EN 1021-1+2:2006 NF-P 503 Class M2 BS 5852 IS CRIB 5 BS 7176:2007 California TB 117:2013 FAR 25.853
Manutenzione	  Lavare con acqua tiepida e sapone neutro. Per sporco difficile usare candeggina diluita o alcol.	Maintenance	  Clean with lukewarm water and mild soap. Use diluted bleach or alcohol with stubborn stains.
Particolarità	Antimuffa, antimicotico, antibatterico. Resistente all'usura, alla rottura a basse temperature ed agli agenti atmosferici. Esente da formaldeide, mercurio ed altre sostanze nocive.	Features	Mildew resistant, antimycotic, antibacterial. Resistant to wear and tear, low temperatures. Weatherproof. Free from formaldehyde, mercury and other harmful substance.
Indicato per uso contract	Grado di resistenza all'uso: POLARIS PRO intenso ●●● POLARIS PRO METAL elevato ●●○	Fabric for commercial and Horeca use	Wear and tear resistance: POLARIS PRO extreme ●●● POLARIS PRO METAL high ●●○

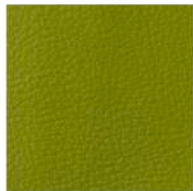
adrenalina

Technical sheet
Scheda tecnica

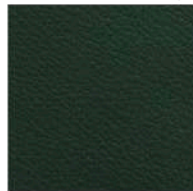
POLARIS PRO

CAT. A / CAT. LUSO

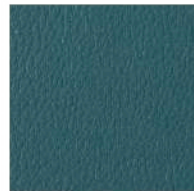
IGNIFUGO
FIRE RETARDANT 



4142 CAT. A



3663 CAT. A



4747 CAT. A



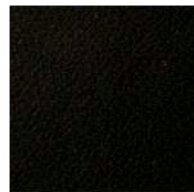
4734 CAT. A



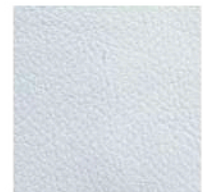
4738 CAT. A



2766 CAT. A



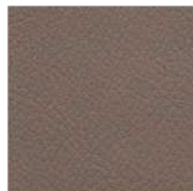
565 CAT. A



2769 CAT. A



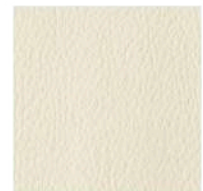
2862 CAT. A



4717 CAT. A



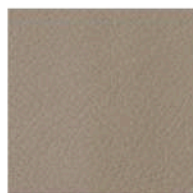
3471 CAT. A



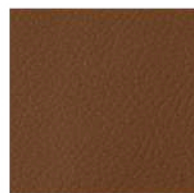
3251 CAT. A



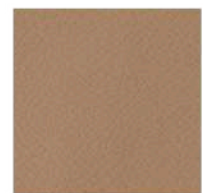
2834 CAT. A



4714 CAT. A



3664 CAT. A



3587 CAT. A



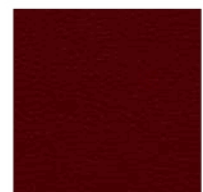
4741 CAT. A



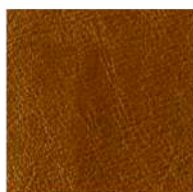
4740 CAT. A



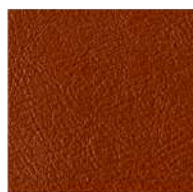
2772 CAT. A



3685 CAT. A



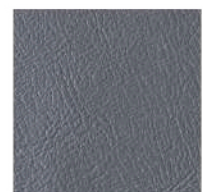
G705 CAT. LUSO



G700 CAT. LUSO



GZ57 CAT. LUSO



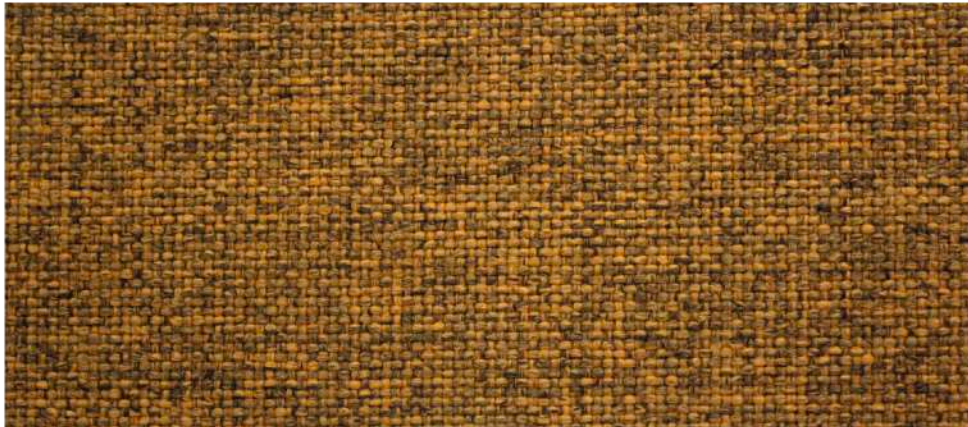
GZ06 CAT. LUSO

adrenalina

Technical sheet
Scheda tecnica

SOLE CS CAT. ELEGANT

IGNIFUGO
FIRE RETARDANT 



404

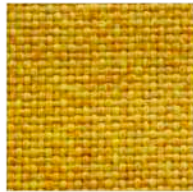
Composizione	Poliestere FR 100% 	Composition	Polyester FR 100% 
Peso	735 gr/mtl	Weight	735 gr/lmt
Altezza	138-140 cm	Width	138-140 cm
Resistenza all'abrasione Martindale ISO 12947-2	80.000 cicli	Abrasion test Martindale ISO 12947-2	80.000 cycles
Solidità alla luce xeno - ISO 105 B02	4/5	Lightfastness xeno - ISO 105 B02	4/5
Certificati di resistenza al fuoco	UNI 9175 Classe 1IM NF-P 503 Classe M1 BS 5852 IS 0+1	Fiammability certificates	UNI 9175 Class 1IM NF-P 503 Class M1 BS 5852 IS 0+1
Manutenzione	 Pulire con trielina o con detergenti a secco	Maintenance	 Clean with trichlorethylene or dry cleaners
Particolarità	Coordinabile con Luna/z CS	Features	Can be matched with Luna/z CS
Indicato per uso contract	Grado di resistenza all'uso: intenso ●●●	Fabric for commercial and Horeca use	Wear and tear resistance: extreme ●●●

adrenalina

Technical sheet
Scheda tecnica

SOLE CS CAT. ELEGANT

IGNIFUGO
FIRE RETARDANT 



007



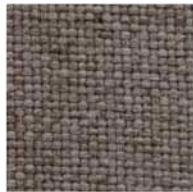
404



416



437



441



444



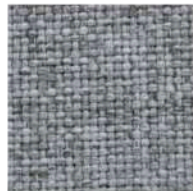
420



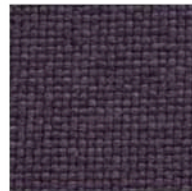
418



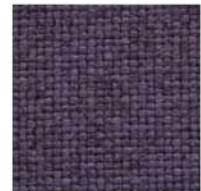
417



442



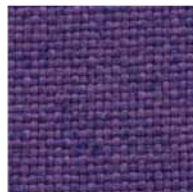
436



435



434



415



422



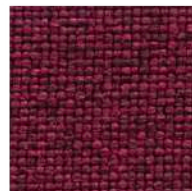
419



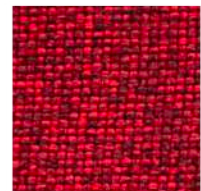
022



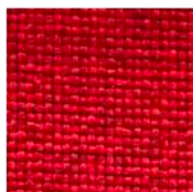
019



016



409



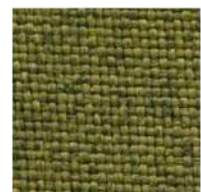
014



408



010



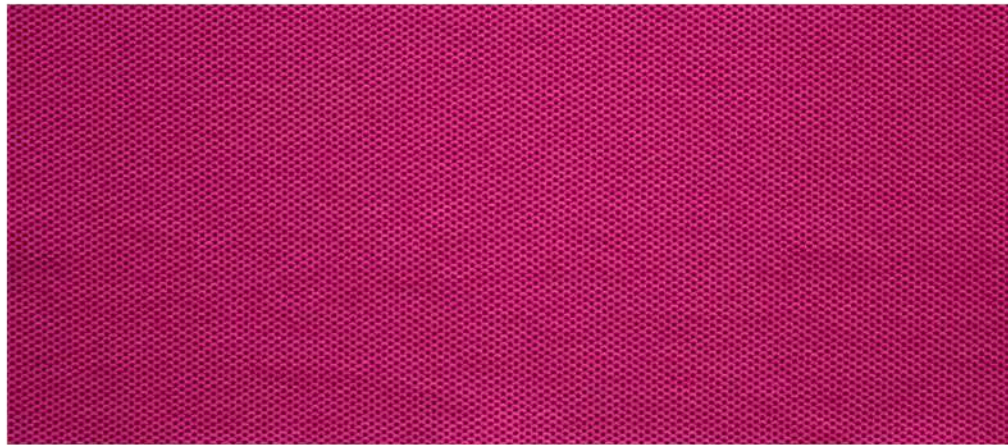
011

adrenalina


Technical sheet
Scheda tecnica

SPRINT CAT. LUSO

IGNIFUGO
FIRE RETARDANT 



HPS018 READY

Composizione	Poliestere FR 100%	Composition	Polyester FR 100%
Peso	492 gr/mtl ± 5%	Weight	492 gr/mt ± 5%
Altezza	150 cm minimo	Width	150 cm minimum
Resistenza all'abrasione Martindale ISO 12947-2	> 100.000 cicli	Abrasion test Martindale ISO 12947-2	> 100.000 cycles
Solidità alla luce xeno - ISO 105 B02	5	Lightfastness xeno - ISO 105 - B02	5
Certificati di resistenza al fuoco	UNI 9175 Classe 11M UNI 9176 Classe 11M EN 1021-1+2:2006 BS 7176:2007	Fiammability certificates	UNI 9175 Class 11M UNI 9176 Class 11M EN 1021-1+2:2006 BS 7176:2007
Manutenzione	 Pulire con panno inumidito	Maintenance	 Clean with damp cloth
Particolarità	Bielastico, adatto per rivestire forme particolarmente stondate	Features	Two-way stretch fabric, suitable for rounded shapes
Indicato per uso contract	Grado di resistenza all'uso: elevato ●●○	Fabric for commercial and Horeca use	Wear and tear resistance: high ●●○
Attenzione	Adatto solo per modelli monoscocca senza cuscini staccati	Warning	Suitable only for monocoque sofas without loose cushions

adrenalina

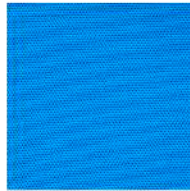
Technical sheet
Scheda tecnica

SPRINT CAT. LUSSO

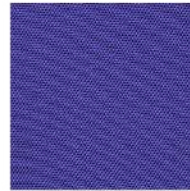
IGNIFUGO
FIRE RETARDANT 



HPS031 STRETCH



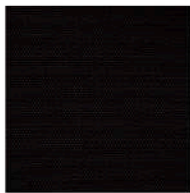
HPS032 VICTORY



HPS037 FOCUS



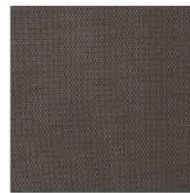
HPS034 OPPONENT



HPS004 CHASE



HPS030 SPEED



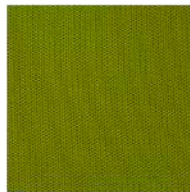
HPS029 BLOCK



HPS028 SILVER



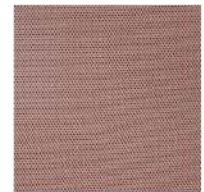
HPS001 HURDLE



HPS027 TRAIN



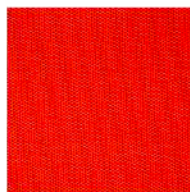
HPS026 ENERGY



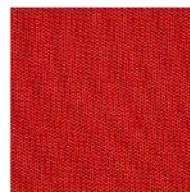
HPS002 RELAY



HPS015 GOLD



HPS016 PLUNGE



HPS010 START



HPS017 RUNNER



HPS018 READY

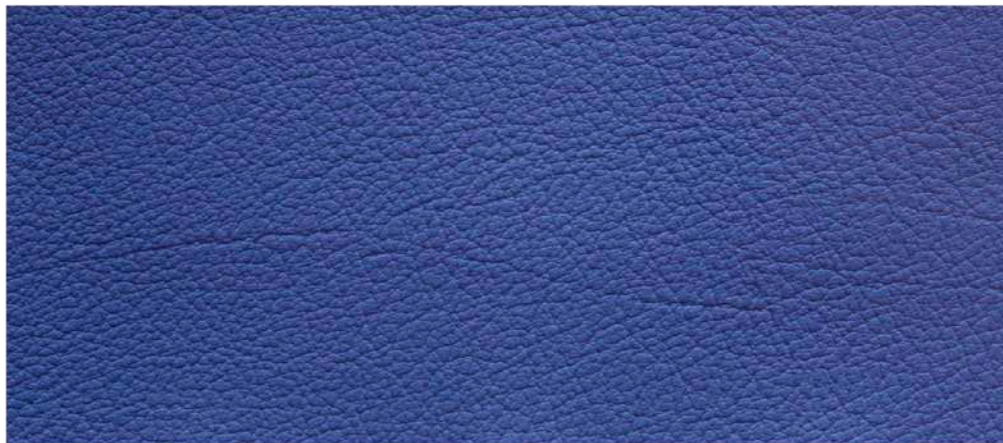
adrenalina

Technical sheet
Scheda tecnica


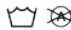
TIFFANY CONTRACT

CAT. A / CAT.SUPER

IGNIFUGO
FIRE RETARDANT 



3335 CAT. A

Composizione	PVC 83% Rayon/Poliestere 17%	Composition	PVC 83% Rayon/Polyester 17%
Peso	822 gr/mlt ± 50%	Weight	822 gr/mlt ± 50%
Altezza	137 cm	Width	137 cm
Resistenza all'abrasione Martindale DIN EN ISO 13934-1 BS 5690	> 50.000 cicli	Abrasion test Martindale ISO 12947-2	> 50.000 cycles
Solidità alla luce DIN 75202	>=6	Lightfastness xeno - ISO 105 B02	>=6
Certificati di resistenza al fuoco	UNI 9175 Classe 1IM EN 1021-1+2:2006 DIN 75200 BS 5852 IS 1 FMVSS 302	Fiammability certificates	UNI 9175 Class 1IM EN 1021-1+2:2006 DIN 75200 BS 5852 IS 1 FMVSS 302
Manutenzione	 Non usare prodotti corrosivi o alcol. Usare acqua e sapone neutro.	Maintenance	 Do not use corrosive detergents or alcohol. Use water and mild soap.
Particolarità	Impermeabile, inalterabile, anallergico. Resistente al sudore, allo strappo, alla saliva, all'urina, all'acqua salata e clorodata. Esente da CD, AZO, FCKW, PCP, PCB, PCT, formaldeide ed altre sostanze nocive.	Features	Waterproof, unalterable, hypoallergenic. Resistant to sweat, tear, saliva, urine, saltwater and chlorinated water. Free from CD, AZO, CFCs, PCP, PCB and PCT, formaldehyde and other harmful substances.
Indicato per uso contract	Grado di resistenza all'uso: intenso ●●●	Fabric for commercial and Horeca use	Wear and tear resistance: extreme ●●●
Attenzione	La pelle sintetica ha caratteristiche di assorbenza ed è soggetta a trasferimenti di colore. Si potrebbe macchiare indelebilmente in caso di: contatto con finta pelle scura, contatto con jeans blu/neri o capi di abbigliamento non trattati e inchiostro di penna. La garanzia sul prodotto non copre questo tipo di danni.	Warning	Artificial leather absorbs easily and is subject to color transfers. It may be indelibly stained if it comes into contact with: dark imitation leather, blue/black jeans or untreated clothes and pen ink. The product warranty does not cover this type of damages.

adrenalina

Technical sheet
Scheda tecnica

TIFFANY CONTRACT

CAT. A / CAT. SUPER

IGNIFUGO
FIRE RETARDANT 



371 CAT. A



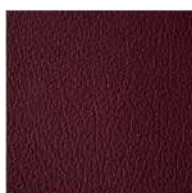
2610 CAT. A



333 CAT. A



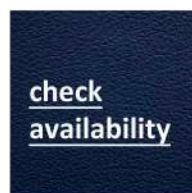
311 CAT. A



336 CAT. A



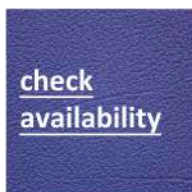
3334 CAT. A



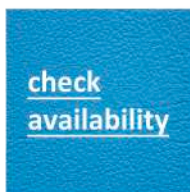
349 CAT. A



381 CAT. A



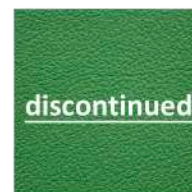
3335 CAT. A



2612 CAT. A



2611 CAT. A



378 CAT. A



373 CAT. A



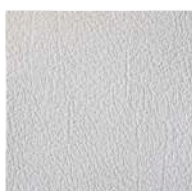
308 CAT. A



327 CAT. A



305 CAT. A



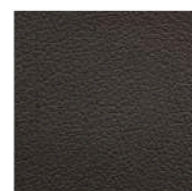
321 CAT. A



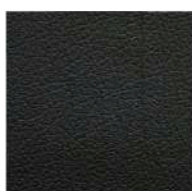
322 CAT. A



323 CAT. A



325 CAT. A



320 CAT. A



ARGENTO CAT. SUPER



ORO CAT. SUPER



BRONZO CAT. SUPER

adrenalina

Technical sheet
Scheda tecnica

VINTAGE CAT. EXTRA

IGNIFUGO
FIRE RETARDANT 



02 BEIGE

Composizione	PVC 66% Poliestere 17% Cotone 17%	Composition	PVC 66% Polyester 17% Cotton 17%
Peso	1008 gr/mtl ± 5%	Weight	1008 gr/mt ± 5%
Altezza	138-140 cm	Width	138-140 cm
Resistenza all'abrasione Martindale ISO 5470-2	50.000 cicli	Abrasion test Martindale ISO 5470-2	50.000 cycles
Solidità alla luce ISO 4582/4892	> 4 minimo	Lightfastness ISO 4582/4892	> 4 minimum
Certificati di resistenza al fuoco	UNI 9175 Classe 1IM	Fiammability certificates	UNI 9175 Class 1IM
Manutenzione	 Pulire con panno inumidito ed insaponato con sapone neutro. Non usare candeggine. Non sfregare energicamente e risciacquare con acqua tiepida.	Maintenance	 Clean it with a soft cloth soaked with mild soap. Do not use bleach. Do not rub vigorously and rinse with lukewarm water.
Particolarità	Pelle sintetica effetto invecchiato. Le sfumature sono volutamente non uniformi e posso essere differenti nelle varie partite.	Features	Aged-looking artificial leather. The shades are deliberately uneven and every batch can be slightly different from the others.
Indicato per uso contract	Esente da COL, AZO, FCKW, PCB, formaldeide ed altre sostanze nocive.	Fabric for commercial and Horeca use	Free from COL, AZO, CFCs, PCBs, formaldehyde and other harmful substances.
Attenzione	Grado di resistenza all'uso: intenso ●●● La pelle sintetica ha caratteristiche di assorbenza ed è soggetta a trasferimenti di colore. Si potrebbe macchiare indelebilmente in caso di contatto con tinta pelle scura, contatto con jeans blu/neri o capi di abbigliamento non trattati e inchiostro di penna. La garanzia sul prodotto non copre questo tipo di danni.	Warning	Wear and tear resistance: extreme ●●● Artificial leather absorbs easily and is subject to color transfers. It may be indelibly stained if it comes into contact with: dark imitation leather, blue/black jeans or untreated clothes and pen ink. The product warranty does not cover this type of damages.

adrenalina

Technical sheet
Scheda tecnica

VINTAGE CAT. EXTRA

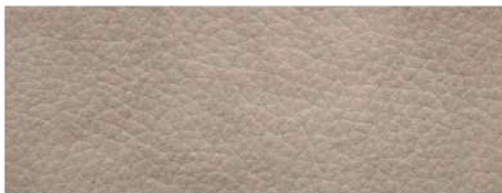
IGNIFUGO
FIRE RETARDANT 



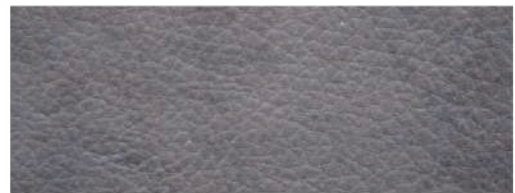
06 PANNA



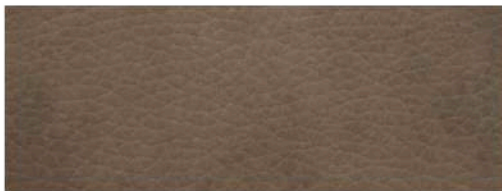
01 SABBIA



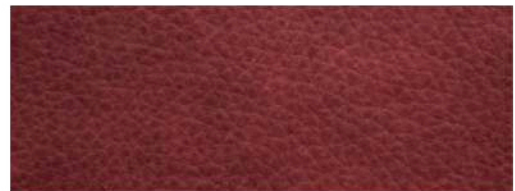
02 BEIGE



07 GRIGIO



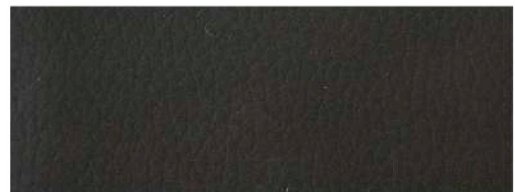
03 NOCCIOLA



04 TERRA



08 FANGO



09 TESTA DI MORO



12 ROSSO



05 OLIVA