

Cassina

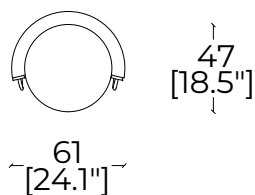
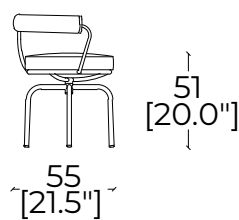
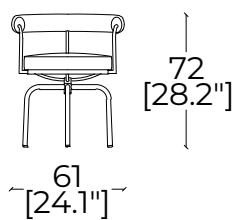
Technical sheet
Scheda tecnica

7 Fauteuil Tournant

Armchair - Poltrona

Design - Charlotte Perriand

Intégré à La Collection Le Corbusier®, Pierre Jeanneret®, Charlotte Perriand®
1927

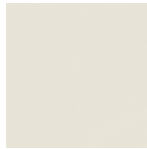


Structure | Struttura

Frame with 5 legs in tubular steel, polished chrome or painted finish.
Frame with 5 legs in tubular steel, polished chrome or painted finish



Chrome plated
Cromata



Ivory Enamel
Verniciato
Avorio



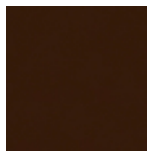
Light Blue Enamel
Verniciato Azzurro



Mud Enamel
Verniciato Fango



Gray Enamel
Verniciato Grigio



Brown Enamel
Verniciato Marrone



Black Enamel
Verniciato Nero



Green Enamel
Verniciato Verde

Padding | Imbottitura

Foam fill. Resin treated polyester fibre batting laminated to fabric lining.
Schiumato. Ovatta in fibra di poliestere resinata accoppiata con vellutino.

Upholstery* | Rivestimento

**Once you've chosen your fabric, please contact our Customer Care Team so we can verify the availability of your selection.*

**Una volta scelto il rivestimento, contatta il customer service per verificare che sia disponibile.*

Fabrics

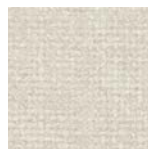
Tessuti

Cat. E:

E - Eremo | Composition: 45% Acrylic - 33% Polyester - 22% Wool
Composizione: 45% Acrilico - 33% Poliestere - 22% Lana



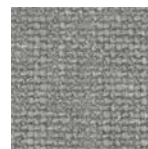
13E500
White
Bianco



13E501
Ivory
Avorio



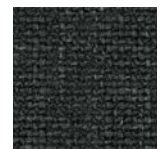
13E502
Beige
Beige



13E503
Pearl
Perla



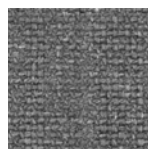
13E504
Mole
Talpa



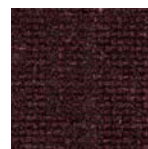
13E505
Anthracite
Antracite



13E506
Carbon
Carbone



13E507
Aluminum
Alluminio



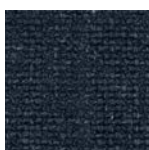
13E508
Wine
Vinaccia



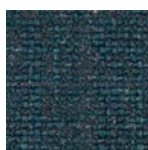
13E509
Rust
Ruggine



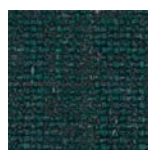
13E510
Sky
Cielo



13E511
Night
Notte



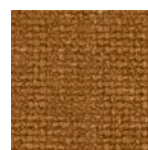
13E512
Oil
Petrolio



13E513
Teal
Ottanio



13E514
Olive
Oliva



13E515
Ochre
Ocra

E - Perbacco |

Composition: 6% Cott. - 59% Linen - 25% Acryl. - 4% Poly. - 6% Polyamm.
Composizione: 6% Cot. - 59% Lino - 25% Acril. - 4% Poliest. - 6% Poliamm.



13E436



13E437



13E438



13E439



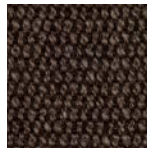
13E440



13E441



13E442



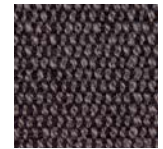
13E443



13E444



13E445



13E446



13E447

Cat. F:

F - Francoforte |

Composition: 63% Cotton - 37% Linen
Composizione: 63% Cotone - 37% Lino



13F000
White
Bianco



13F091
Ivory
Avorio



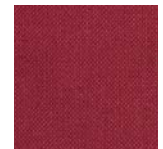
13F092
Ash
Cenere



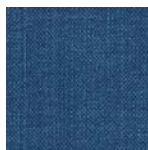
13F093
Beige
Beige



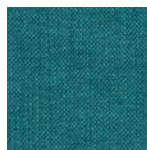
13F095
Hazelnut
Nocciola



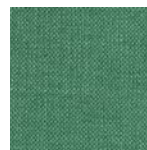
13F096
Raspberry
Lampone



13F097
Blue Navy
Blu Navy



13F098
Emerald
Smeraldo



13F099
Pistachio
Pistacchio



13F101
Acid Green
Verde Acido



13F102
Clay
Argilla



13F103
Light Blue
Azzurro



13F104
Sky
Cielo



13F105
Gray
Grigio



13F106
Smoke
Fumo



13F107
Anthracite
Antracite

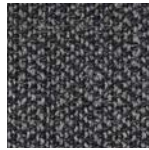
F - Marocco | Composition: 27% Cot. - 10% Lino - 43% Acril. - 10% Poliest. - 10% Visc.
Composizione: 27% Cott. - 10% Linen - 43% Acryl. - 10% Poly. - 10% Visc.



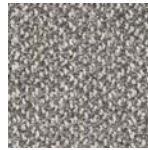
13F783



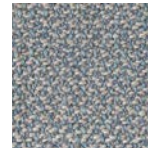
13F784



13F755



13F780



13F781



13F782



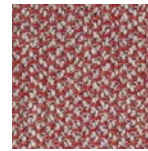
13F783



13F784



13F785



13F786

Cat. L:

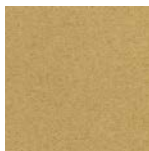
L - Lincoln | Composition: 100% Wool
Composizione: 100% Lana



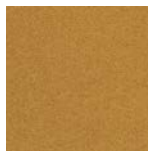
13L570
Ivory
Avorio



13L571
Ash
Cenere



13L572
Sand
Sabbia



13L573
Tabacco
Tobacco



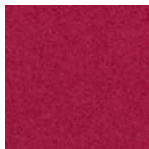
13L574
Saffron
Zafferano



13L575
Rust
Ruggine



13L576
Wine
Vinaccia



13L577
Geranium
Geraneo



13L578
Raspberry
Lampone



13L579
Tomato
Pomodoro



13L580
Fuxia
Fuxia



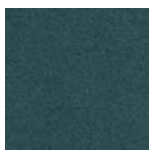
13L581
Cement
Cemento



13L582
Stone
Pietra



13L583
Oil
Petrolio



13L584
Olive
Oliva



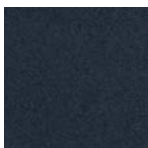
13L585
Cobalt Blue
Blu Cobalto



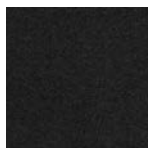
13L586
Violet Blue
Blu Violett



13L587
Night Blue
Blu Notte



13L588
Anthracite
Antracite



13L589
Black
Nero

L - Lipari | Composition: 90% Linen - 10% Polyamide
Composizione: 90% Lino - 10% Poliammidica



13L630
Cream
Panna



13L631
Ash
Cenere



13L632
Cream
Crema



13L633
Canvas
Canapa



13L634
Truffle
Tartufo



13L635
Gray
Grigio



13L636
Titanium
Titanio



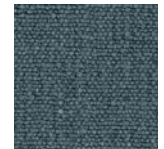
13L637
Anthracite
Antracite



13L638
Emerald
Smeraldo



13L639
Blue
Blu



13L640
Jeans
Jeans



13L641
Wine
Vinaccia

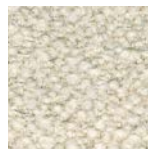


13L642
Rust
Ruggine

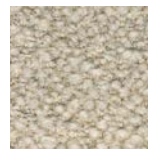
L - Look | Composition: 34% Visc. - 33% Acryl. - 17% Wool - 8% Poly. - 4% Linen - 4% Cott.
Composizione: 34% Visc. - 33% Acril. - 17% Lana - 8% Poliest. - 4% Lino - 4% Cot.



13L010
White
Bianco



13L011
Rope
Corda



13L012
Cement
Cemento



13L013
Stone
Pietra



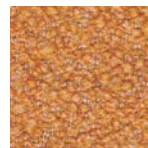
13L014
Anthracite
Antracite



13L015
Sky
Cielo



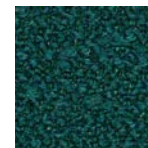
13L016
Mint
Menta



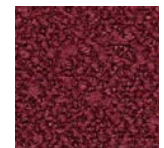
13L017
Mustard
Senape



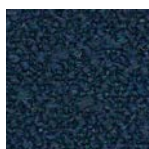
13L018
Cameo
Cameo



13L019
Octavius
Ottavio



13L020
Wine
Vinaccia



13L021
Night
Notte

L - Ortigia | Composition: 100% Cotton
Composizione: 100% Cotone



13L650
Stone
Roccia



13L651
Ash
Cenere



13L652
Cayenne
Cayenne



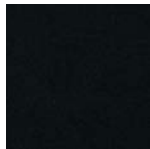
13L653
Wine
Vino



13L654
Prune
Prugna



13L655
Silver
Argento



13L656
Cactus
Cactus



13L657
Anthracite
Antracite



13L658
Night Blue
Blu Notte



13L659
Indigo
Indaco



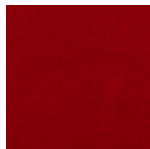
13L660
Ocean
Oceano



13L661
Lake
Lago



13L662
Amande
Amande



13L663
Opera
Opera



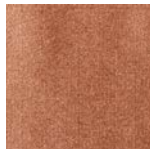
13L664
Prussian
Prussia

Cat. O:

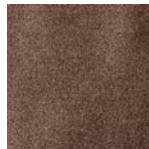
O - Osaka* | Composition: 100% Polyacrylic
Composizione: 100% Poliaccrilico



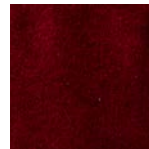
13O030
Powder Pink
Cipria



13O031
Old Rose
Rosa Antico



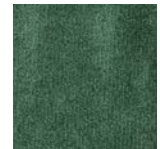
13O032
Mole
Talpa



13O033
Cardinal
Cardinale



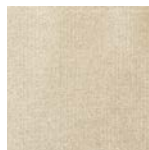
13O034
Eggplant
Melanzana



13O035
Sage
Salvia



13O036
Cinnamon
Cannella



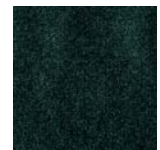
13O040
Mother of Pearl
Madreperla



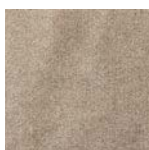
13O041
Sky
Cielo



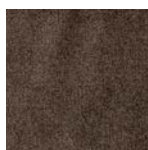
13O042
Sugar Paper
Carta da Zucchero



13O043
Emerald
Smeraldo



13O044
Silver
Argento



13O045
Anthracite
Antracite



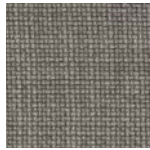
13O046
Coal
Carbone

*not available for UK market

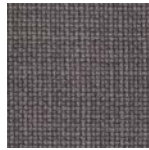
O - Pamir* | Composition: 100% Poliammidica
Composizione: 100% Polyamide



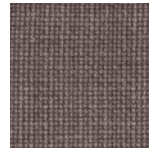
130079



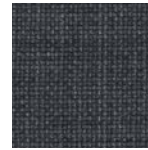
130086



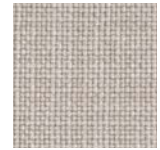
130087



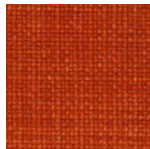
130088



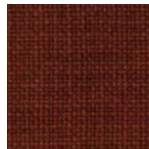
130089



130090



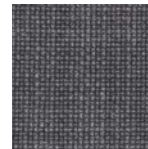
130091



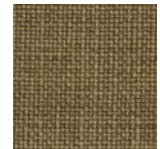
130092



130093



130094



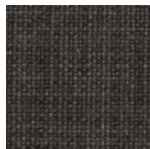
130095



130096



130097



130098



130099

*not available for UK market

Leather |
Pelle

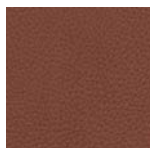
Imperfections and unevenness are characteristics of this type of leather which is not treated; this to guarantee the maximum degree of transpiration and its genuineness.

Imperfezioni e irregolarità sono caratteristiche di questo tipo di pelle, che non è trattato con alcun prodotto coprente per garantire massima traspirabilità e naturalezza.

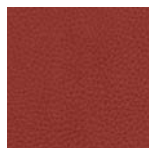
Y - Extra |



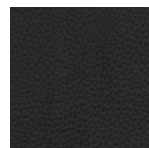
13Y244
Sand
Sabbia



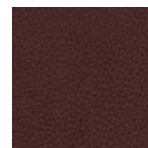
13Y246
Earth
Terra



13Y251
Bulgarian Red
Rosso Bulgaro



13Y253
Black
Nero



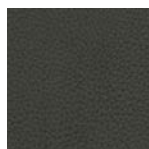
13Y255
Prune
Prugna



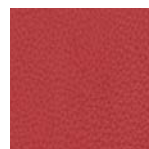
13Y257
Titanium
Titanio



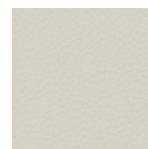
13Y258
Smoke
Fumo



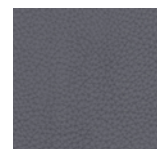
13Y260
Moss
Muschio



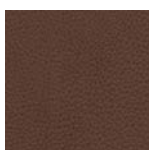
13Y274
Rust
Ruggine



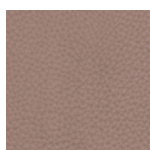
13Y276
Ivory
Avorio



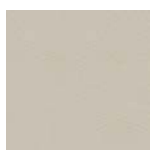
13Y280
Warm Gray
Grigio Caldo



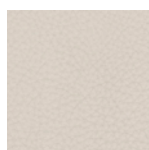
13Y281
Brown
Marrone



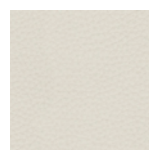
13Y282
Coffe with Milk
Caffelatte



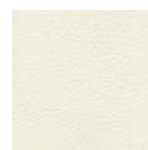
13Y283
Barley
Orzo



13Y284
Desert
Deserto



13Y285
Ash
Cenere



13Y286
Dirty White
Bianco Sporco

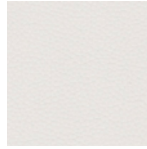
X - Scozia |



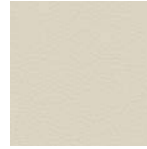
13X201
Ambra
Amber



13X202
Tasta di Moro
Brown



13X247
Bianco
White



13X269
Panna
Cream



13X276
Metallo
Metal



13X290
Carminio
Carmine



13X295
Corrida
Bullfight



13X326
Deserto
Desert



13X328
Cenere
Ash



13X330
Grigio
Gray



13X331
Cipria
Face Powder



13X332
Castagna
Chestnut



13X333
Moka
Moka



13X334
Fango
Mud



13X335
Verde Menta
Mint Green



13X336
Cielo
Sky



13X337
Verde Bosco
Forest Green



13X338
Verde Oliva
Olive Green



13X339
Cedro
Cedar



13X340
Bulgaro
Bulgarian



13X341
Petrolio
Petroleum



13X342
Oceano
Ocean



13X606
Grafite
Graphite

Z - Naturale |



13Z200
Natural
Naturale

Z - Naturale ZZ |



13Z360
Natural
Naturale



13Z361
Tabacco
Tabacco



13Z362
Mud
Fango



13Z363
Gray
Grigio



13Z364
Moss
Muschio



13Z365
Forest
Foresta



13Z366
Walnuts
Noce



13Z367
Moka
Moka



13Z368
Ocean
Oceano