

LIVING IN COLORS

Colors Card  
Cartella Colori



2021

## QUALITY

**MyHome** is a furniture trademark created in 2015, based on the experience of the Alivar “family”. It is located in the Tuscan production district between Florence and Siena, renowned for skilled craftsmanship in the fields of metalwork, tailoring and leatherworking.

The **MyHome** collection of furnishings for residential and contract applications is aimed to a young audience interested in new contemporary design trends and the exceptional quality of Italian craftsmanship. Every product tells a story made of skills, know-how, attention to detail and constant research on solutions that adapt to technological evolution of production methods.

All the products made by **MyHome** epitomize the concept of Made and Manufactured in Italy. In fact, the entire process of their creation and production takes place in Italy, carried out by professionals and qualified staff with extensive experience in the furniture sector. The workmanship of **Made in Italy** goes beyond the logic of the standardized product, and thus ensures high levels of personalization for every item. The quality of the products is guaranteed by the sartorial skills of master craftsmen, based on painstaking attention to detail and careful selection of materials and finishes, excellent design, a wide variety of options for personalization, adapting to small production runs in close collaboration with suppliers. **MyHome Collection** is certified as **100% Made in Italy** and listed in the National Registry of Italian Manufacturers. The 100% Made in Italy certification guarantees that products are entirely manufactured in Italy, using semi-finished products exclusively of Italian origin, as well as the finest Italian raw materials and components.

The workmanship is based on the best aspects of the Italian tradition. The entire in-house production process is covered by the 100% Made in Italy Certificate issued by Italian Producers Corporation Certificate N° IT01.IT\_532.091.M.

**MyHome** è il marchio di arredamento che nasce nel 2015 dall'esperienza della “famiglia” Alivar, nel distretto produttivo toscano tra Firenze e Siena, dove l'arte del saper fare artigiano nei settori della carpenteria, della sartoria e della lavorazione della pelle affondano le proprie radici.

La collezione di arredi **MyHome** è dedicata ad ambienti residenziali e contract ed è rivolta a un pubblico giovane e attento alle nuove tendenze del design contemporaneo e alla qualità tutta italiana della manifattura. Ogni prodotto racconta perciò una storia, fatta di artigianato, saper fare, amore per il dettaglio e ricerca continua di soluzioni che si adattino all'evoluzione tecnologica nel campo produttivo.

Tutti i prodotti realizzati da **MyHome** restituiscono il concetto di Made and Manufactured in Italy, infatti tutto il processo creativo e produttivo è interamente realizzato in Italia da professionisti e da personale qualificato e dotato di competenza nel settore del mobile. La produzione artigiana del **Made in Italy** supera la logica del prodotto standardizzato e per questo garantisce un elevato livello di personalizzazione del prodotto. La qualità dei prodotti è garantita dall'attenzione sartoriale dei maestri artigiani, nella cura del dettaglio, nella scelta dei materiali e delle finiture; qualità progettuale, nella disponibilità alla personalizzazione, nella gestione dei piccoli lotti e nella stretta relazione con i fornitori. **MyHome Collection** è azienda certificata **100% Made In Italy** ed è stata iscritta nel registro Nazionale dei Produttori Italiani. Il marchio 100% Made In Italy certifica che la fabbricazione del prodotto è interamente italiana, i semilavorati sono prodotti esclusivamente in Italia, sono utilizzate solo materie prime e componenti italiani di pregio e qualità selezionata di prima scelta.

La lavorazione è tipica della tradizione italiana. L'intero processo di lavorazione aziendale è garantito con certificazione 100% Made in Italy rilasciata dall'Ente Produttori Italiani Certificato N° IT01.IT\_532.091.M.

## Fabrics

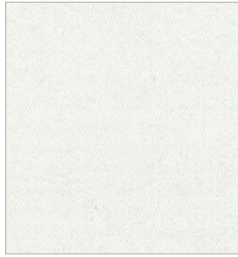
Tessuti

We have selected an innumerable quantity of fabrics, with multiple compositions and the most disparate colors and shades.

Abbiamo selezionato una innumerevole quantità di tessuti, dalle molteplici composizioni e dalle varianti colore e tonalità più disparate.



# MY HOME



**Cat. X 14046**  
100%CO



**Cat. X 14047**  
100%CO



**Cat. Y 22385**  
85%PES-15%CO



**Cat. Y 23277**  
100%PL



**Cat. Y 23313 VELVET**  
100%PL



**Cat. Y 23308**  
68%PC-28%PL-4%VI



**Cat. Y 23291**  
100%PL



**Cat. Y 23209**  
100%PL



**Cat. M 35099**  
52%LI-48%VI



**Cat. S 45405**  
57%CO-38%VI-5%PA



**Cat. X 14111**  
75%CO-25%PL



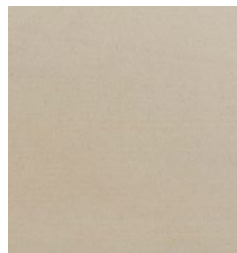
**Cat. M 35100**  
52%LI-48%VI



**Cat. Y 22386**  
85%PES-15%CO



**Cat. X 14096**  
100%PL



**Cat. Y 23219 VELVET**  
100%PL



**Cat. S 45403**  
57%CO-38%VI-5%PA



**Cat. Y 23276**  
100%PL



**Cat. Y 23210**  
100%PL



**Cat. M 35101**  
52%LI-48%VI



**Cat. Y 23314**  
63%CO-29%PL-8%AF



**Cat. Y 23290**  
100%PL

# MY HOME



**Cat. M 32509**  
40%VI-20%PL-20%CO-20%LI



**Cat. X 14098 VELVET**  
100%PL



**Cat. X 14110**  
75%CO-25%PL



**Cat. X 14099 VELVET**  
100%PL



**Cat. M 35117**  
52%LI-48%VI



**Cat. Y 23306**  
68%PC-28%PL-4%VI



**Cat. Y 23289**  
100%PL



**Cat. Y 23211**  
100%PL



**Cat. X 14100 VELVET**  
100%PL



**Cat. S 45402**  
100%PL



**Cat. Y 23307**  
68%PC-28%PL-4%VI



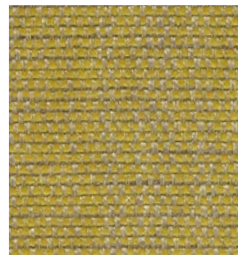
**Cat. Y 23275**  
100%PL



**Cat. X 14109**  
75%CO-25%PL



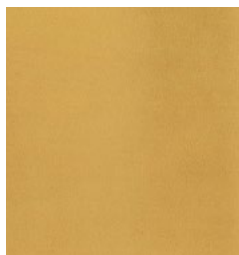
**Cat. Y 23288**  
100%PL



**Cat. Y 23297**  
100%PL



**Cat. Y 23311 VELVET**  
100%PL



**Cat. X 14097 VELVET**  
100%PL



**Cat. Y 23261**  
63%CO-29%PL-8%AF



**Cat. Y 23304**  
68%PC-28%PL-4%VI



**Cat. S 45396**  
FIRE RETARDANT BS 5852-BS 476 PART7-US



**Cat. S 45397**  
FIRE RETARDANT BS 5852-BS 476 PART7-US



**Cat. Y 23283 VELVET**  
100%PL



**Cat. Y 23305**  
100%PL

# MY HOME



**Cat. X 14108**  
75%CO-25PL%



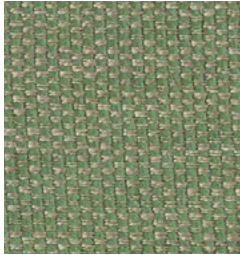
**Cat. Y 23273**  
100%PL



**Cat. X 14095**  
100%PL



**Cat. Y 23287**  
100%PL



**Cat. Y 23296**  
100%PL



**Cat. Y 23221 VELVET**  
100%PL



**Cat. Y 23274**  
100%PL



**Cat. S 45401**  
57%CO-38%VI-5%PA



**Cat. M 32508**  
40%VI-20%PL-20%LI-20%CO



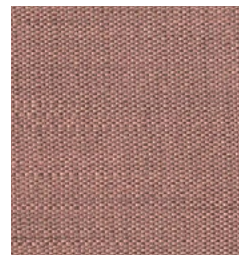
**Cat. Y 23303**  
68%PC-28%PL-4%VI



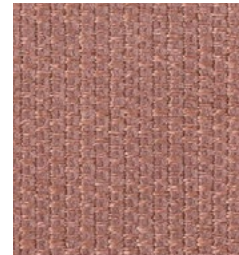
**Cat. X 14029**  
100%CO



**Cat. S 45399**  
57%CO-38%VI-5%PA



**Cat. Y 23286**  
100%PL



**Cat. Y 23295**  
100%PL



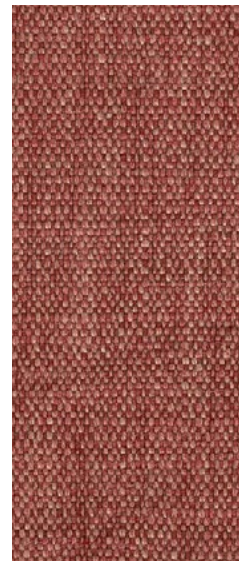
**Cat. Y 23282 VELVET**  
100%PL



**Cat. S 45411**  
39%VI-35%CO-16%PL-10%LI



**Cat. Y 23271**  
100%PL



**Cat. Y 23284**  
47%PL-23%VI-18%LI-12%PC



**Cat. Y 23272**  
100%PL



**Cat. S 45400**  
57%CO-38%VI-5%PA

# MY HOME



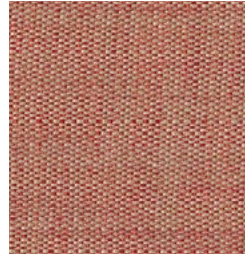
**Cat. X 14105**  
75%CO-25%PL



**Cat. Y 23270**  
100%PL



**Cat. Y 23260**  
63%CO-29%PL-8%AF



**Cat. Y 23285**  
100%PL



**Cat. Y 23208**  
100%PL



**Cat. X 14106**  
75%CO-25%PL



**Cat. Y 23302**  
68%PC-28%PL-4%VI



**Cat. S 45410**  
39%VI-35%CO-16%PL-10%LI



**Cat. S 45394**  
FIRE RETARDANT BS 5852-BS 476 PART7-US



**Cat. S 45395**  
FIRE RETARDANT BS 5852-BS 476 PART7-US



**Cat. Y 23281 VELVET**  
100%PL



**Cat. X 14104**  
75%CO-25%PL



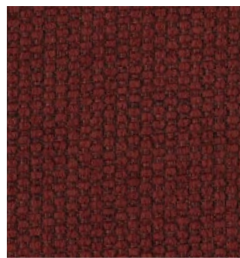
**Cat. Y 23268**  
100%PL



**Cat. Y 23280 VELVET**  
100%PL



**Cat. S 45408**  
39%VI-35%CO-16%PL-10%LI



**Cat. S 45393**  
FIRE RETARDANT BS 5852-BS 476 PART7-US



**Cat. Y 23301**  
68%PC-28%PL-4%VI



**Cat. S 45409**  
39%VI-35%CO-16%PL-10%LI



**Cat. S 14102 VELVET**  
100%PL



**Cat. X 14107**  
75%CO-25%PL



**Cat. Y 23269**  
100%PL

# MY HOME



**Cat. X 14034**  
100%CO



**Cat. Y 23266**  
75%CO-25%PL



**Cat. Y 23259**  
63%CO-29%PL-8%AF



**Cat. S 45392**  
FIRE RETARDANT BS 5852-BS 476 PART7-US



**Cat. S 45406**  
68%PC-28%PL-4%VI



**Cat. Y 23206**  
100%PL



**Cat. Y 23278 VELVET**  
100%PL



**Cat. S 45398**  
57%CO-38%VI-5%PA



**Cat. Y 23300**  
68%PC-28%PL-4%VI



**Cat. S 45407**  
39%VI-35%CO-16%PL-10%LI



**Cat. Y 23267**  
75%CO-25%PL



**Cat. Y 23279 VELVET**  
100%PL



**Cat. Y 23264**  
75%CO-25%PL



**Cat. X 14101 VELVET**  
100%PL



**Cat. Y 23294**  
100%PL



**Cat. S 45389**  
FIRE RETARDANT BS 5852-BS 476 PART7-US



**Cat. S 45390**  
FIRE RETARDANT BS 5852-BS 476 PART7-US



**Cat. S 45391**  
FIRE RETARDANT BS 5852-BS 476 PART7-US



**Cat. M 35142**  
52%LI-48%VI



**Cat. X 14035**  
100%CO



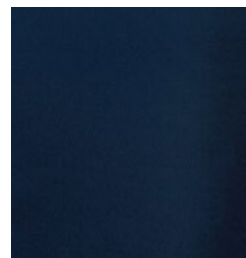
**Cat. S 45390**  
100%CO



**Cat. Y 23265**  
75%CO-25%PL



**Cat. M 35104**  
52%LI-48%VI



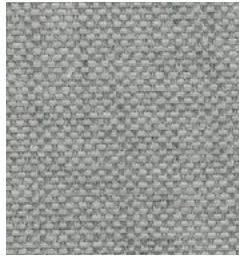
**Cat. Y 23224 VELVET**  
100%PL



# MY HOME



**Cat. Y 22388**  
85%PES-15%CO



**Cat. Y 23292**  
100%PL



**Cat. M 35103**  
52%LI-48%VI



**Cat. S 45426**  
43%VI-36%CO-2%PV-3%LI



**Cat. Y 23262**  
75%CO-25%PL



**Cat. Y 22423**  
85%PES-15%CO



**Cat. Y 23263**  
75%CO-25%PL



**Cat. Y 23258**  
63%CO-29%PL-8%AF



**Cat. S 45373**  
43%VI-36%CO-2%PV-3%LI



**Cat. Y 22424**  
85%PES-15%CO



**Cat. Y 23293**  
100%PL



**Cat. X 14103**  
75%CO-25%PL



**Cat. Y 23299**  
68%PC-28%PL-4%VI

# MY HOME



**Cat. S 45412**  
80%WO-20%PA FIRE RETARDANT



**Cat. S 45413**  
80%WO-20%PA FIRE RETARDANT



**Cat. S 45414**  
80%WO-20%PA FIRE RETARDANT



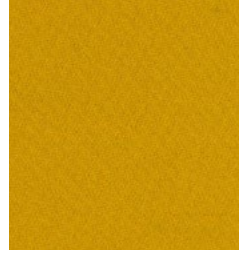
**Cat. S 45415**  
80%WO-20%PA FIRE RETARDANT



**Cat. S 45416**  
80%WO-20%PA FIRE RETARDANT



**Cat. S 45417**  
80%WO-20%PA FIRE RETARDANT



**Cat. S 45418**  
80%WO-20%PA FIRE RETARDANT



**Cat. S 45419**  
80%WO-20%PA FIRE RETARDANT



**Cat. S 45420**  
80%WO-20%PA FIRE RETARDANT



**Cat. S 45421**  
80%WO-20%PA FIRE RETARDANT



**Cat. S 45422**  
80%WO-20%PA FIRE RETARDANT



**Cat. S 45423**  
80%WO-20%PA FIRE RETARDANT



**Cat. S 45424**  
80%WO-20%PA FIRE RETARDANT



**Cat. S 45425**  
80%WO-20%PA FIRE RETARDANT



**Cat. S 45422**  
80%WO-20%PA FIRE RETARDANT

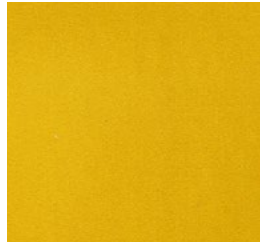


**Cat. S 45423**  
80%WO-20%PA FIRE RETARDANT

# MY HOME



**Cat. Y 23313 VELVET**  
100%PL



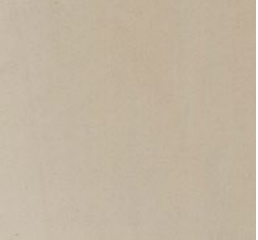
**Cat. Y 23311 VELVET**  
100%PL



**Cat. Y 23281 VELVET**  
100%PL



**Cat. X 14101 VELVET**  
100%PL



**Cat. Y 23219 VELVET**  
100%PL



**Cat. X 14097 VELVET**  
100%PL



**aaa**  
aaa



**aaa**  
aaa



**Cat. X 14098 VELVET**  
100%PL



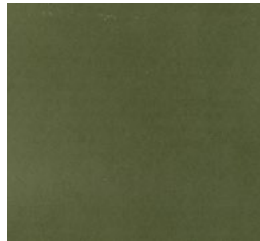
**Cat. Y 23288 VELVET**



**Cat. X 14102 VELVET**  
100%PL



**Cat. X 14099 VELVET**  
100%PL



**Cat. Y 23221 VELVET**  
100%PL



**Cat. Y 23278 VELVET**  
100%PL



**Cat. X 14100 VELVET**  
100%PL



**Cat. Y 23282 VELVET**  
100%PL



**Cat. Y 23279 VELVET**  
100%PL

## Leathers

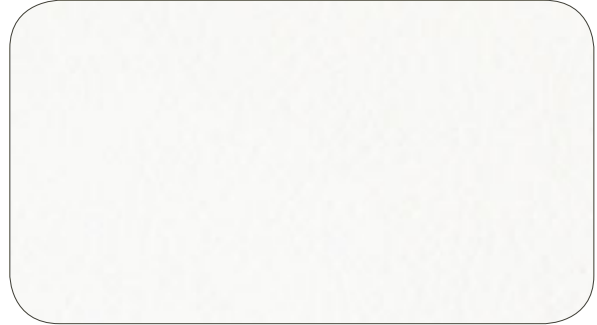
Pelli

Natural leather offers an unbeatable feel, a perfect close fit and extraordinary comfort.

La pelle naturale regala un'inimitabile sensazione tattile, una perfetta aderenza alle forme e un comfort straordinario.



**Cat. K**  
Leathers | Pelli



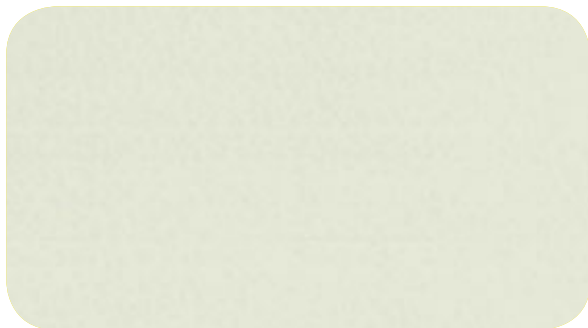
Cat. K 02 White



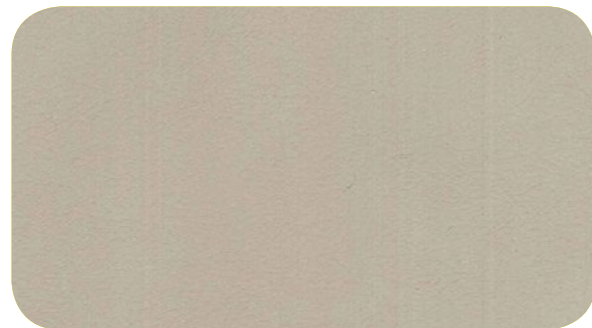
Cat. K 80 Cream



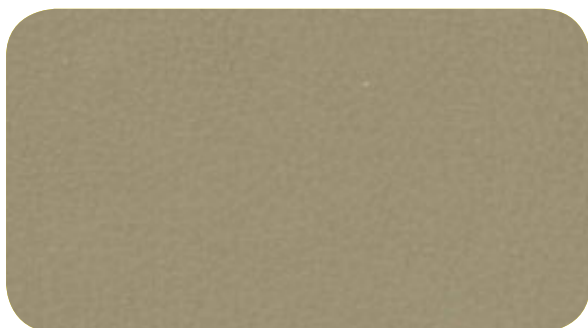
Cat. 81 Sand



Cat. K 830 Warm Grey



Cat. K 16 Dove Brown



Cat. K 022 Cappuccino



Cat. K 05 Mud

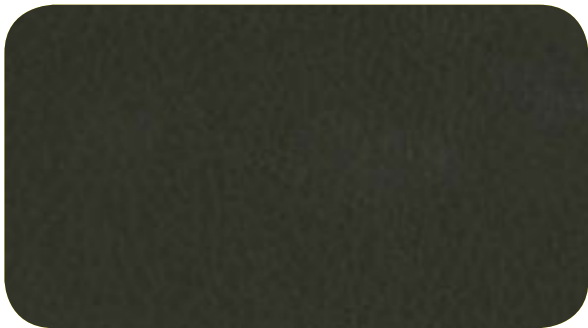
# MY HOME



Cat. K 12 Tan



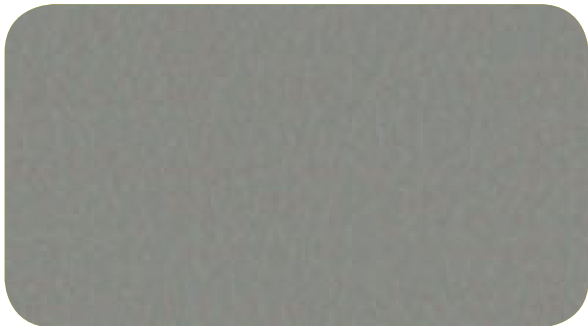
Cat. K 988 Brown



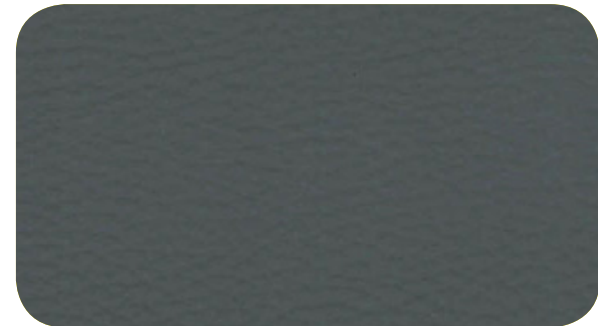
Cat. K 23 Moka



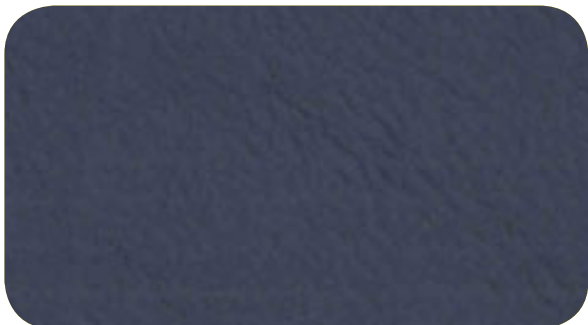
Cat. K 24 Bordeaux



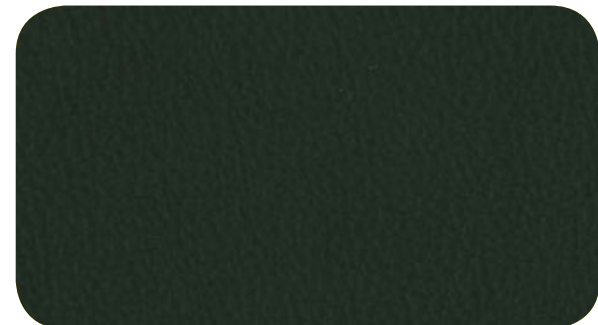
Cat. K 840 Grey



Cat. K 04 Dark Grey



Cat. K 21 Blue



Cat. K 01 Black

## Cat. VIP

Leathers | Pelli

Chrome-tanned leathers, dry vacuum leather finished with aniline and manually buffed obtaining a worn-look. A special combination between an old-fashioned vintage look and a superbly soft touch.

Pelli conciate al cromo, asciugate sottovuoto, rifinite con aniline e carteggiate manualmente ottenendo un effetto invecchiato. Particolarità di questo articolo è il connubio tra l'effetto "vintage" e un tatto vellutato.



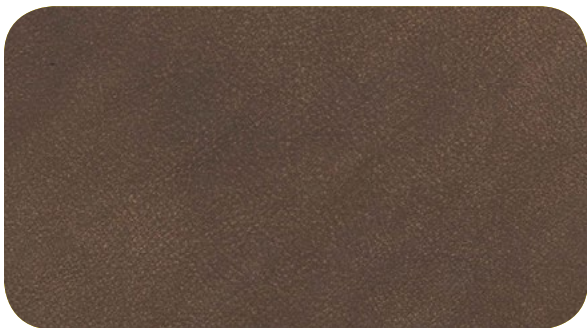
Cat. VIP 72147 Grey



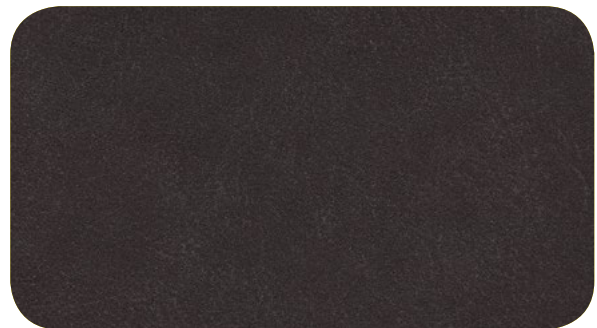
Cat. VIP 72148 Sand



Cat. VIP 72153 Rubin



Cat. VIP 72150 Moka



Cat. VIP 72151 Coffee

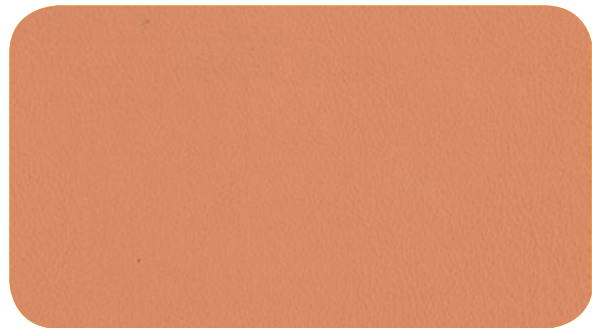
# MY HOME



Cat. VIP 72162 Red Corral



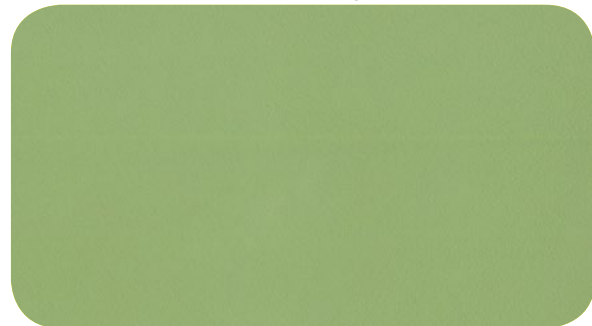
Cat. VIP 72163 Dusty Rose



Cat. VIP 72164 Apricot



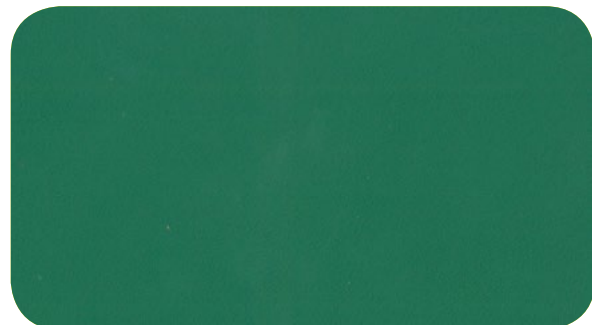
Cat. VIP 72165 Aquamarine



Cat. VIP 72166 Sage



Cat. VIP 72157 Pistachio



Cat. VIP 72161 Green



## Cat. TOP

Leathers | Pelli

Chrome-tanned leathers, dry vacuum leather finished with aniline and manually buffed obtaining a worn-look. A special combination between an old-fashioned vintage look and a superbly soft touch.

Pelli conciate al cromo, asciugate sottovuoto, rifinite con aniline e carteggiate manualmente ottenendo un effetto invecchiato. Particolarità di questo articolo è il connubio tra l'effetto "vintage" e un tatto vellutato.



Cat. TOP 82144 Yellow



Cat. TOP 80713 Blue



Cat. TOP 82142 Brown

## Finishes

Finiture

The purity of the raw material, the harmony of the essence and identity of the product.

La purezza della materia prima, l'armonia dell'essenza e dell'identità del prodotto.





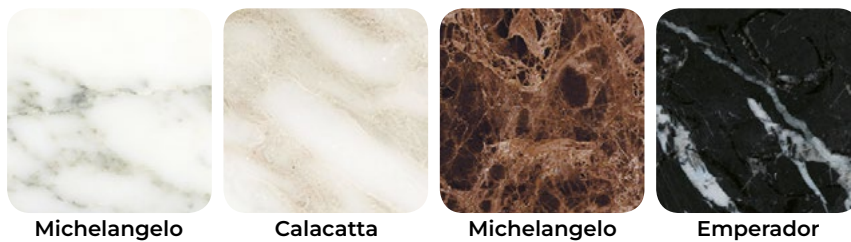
## Epoxy steel lacquers and wood lacquers

Laccature epossidiche per metallo e laccature legno



## Marbles

Marmi



## Wood

Essenze

