

LIVING IN COLORS

Colors Card
Cartella Colori



2023

QUALITY

MyHome is a furniture trademark created in 2015, based on the experience of the Alivar “family”. It is located in the Tuscan production district between Florence and Siena, renowned for skilled craftsmanship in the fields of metalwork, tailoring and leatherworking.

The **MyHome** collection of furnishings for residential and contract applications is aimed to a young audience interested in new contemporary design trends and the exceptional quality of Italian craftsmanship. Every product tells a story made of skills, know-how, attention to detail and constant research on solutions that adapt to technological evolution of production methods.

All the products made by **MyHome** epitomize the concept of Made and Manufactured in Italy. In fact, the entire process of their creation and production takes place in Italy, carried out by professionals and qualified staff with extensive experience in the furniture sector. The workmanship of **Made in Italy** goes beyond the logic of the standardized product, and thus ensures high levels of personalization for every item. The quality of the products is guaranteed by the sartorial skills of master craftsmen, based on painstaking attention to detail and careful selection of materials and finishes, excellent design, a wide variety of options for personalization, adapting to small production runs in close collaboration with suppliers. **MyHome Collection** is certified as **100% Made in Italy** and listed in the National Registry of Italian Manufacturers. The 100% Made in Italy certification guarantees that products are entirely manufactured in Italy, using semi-finished products exclusively of Italian origin, as well as the finest Italian raw materials and components.

The workmanship is based on the best aspects of the Italian tradition. The entire in-house production process is covered by the 100% Made in Italy Certificate issued by Italian Producers Corporation Certificate N° IT01.IT_532.091.M.

MyHome è il marchio di arredamento che nasce nel 2015 dall'esperienza della “famiglia” Alivar, nel distretto produttivo toscano tra Firenze e Siena, dove l'arte del saper fare artigiano nei settori della carpenteria, della sartoria e della lavorazione della pelle affondano le proprie radici.

La collezione di arredi **MyHome** è dedicata ad ambienti residenziali e contract ed è rivolta a un pubblico giovane e attento alle nuove tendenze del design contemporaneo e alla qualità tutta italiana della manifattura. Ogni prodotto racconta perciò una storia, fatta di artigianato, saper fare, amore per il dettaglio e ricerca continua di soluzioni che si adattino all'evoluzione tecnologica nel campo produttivo.

Tutti i prodotti realizzati da **MyHome** restituiscono il concetto di Made and Manufactured in Italy, infatti tutto il processo creativo e produttivo è interamente realizzato in Italia da professionisti e da personale qualificato e dotato di competenza nel settore del mobile. La produzione artigiana del **Made in Italy** supera la logica del prodotto standardizzato e per questo garantisce un elevato livello di personalizzazione del prodotto. La qualità dei prodotti è garantita dall'attenzione sartoriale dei maestri artigiani, nella cura del dettaglio, nella scelta dei materiali e delle finiture; qualità progettuale, nella disponibilità alla personalizzazione, nella gestione dei piccoli lotti e nella stretta relazione con i fornitori. **MyHome Collection** è azienda certificata **100% Made In Italy** ed è stata iscritta nel registro Nazionale dei Produttori Italiani. Il marchio 100% Made In Italy certifica che la fabbricazione del prodotto è interamente italiana, i semilavorati sono prodotti esclusivamente in Italia, sono utilizzate solo materie prime e componenti italiani di pregio e qualità selezionata di prima scelta.

La lavorazione è tipica della tradizione italiana. L'intero processo di lavorazione aziendale è garantito con certificazione 100% Made in Italy rilasciata dall'Ente Produttori Italiani Certificato N° IT01.IT_532.091.M.

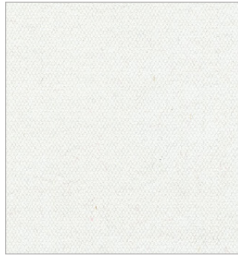
Fabrics

Tessuti

We have selected an innumerable quantity of fabrics, with multiple compositions and the most disparate colors and shades.

Abbiamo selezionato una innumerevole quantità di tessuti, dalle molteplici composizioni e dalle varianti colore e tonalità più disparate.





Cat. X 14046
100%CO



Cat. X 14047
100%CO



Cat. Y 22385
85%PES-15%CO



Cat. Y 23277
100%PL



Cat. Y 23313 VELVET
100%PL



Cat. Y 23308
68%PC-28%PL-4%VI



Cat. Y 23291
100%PL



Cat. Y 23209
100%PL



Cat. M 35099
52%LI-48%VI



Cat. S 45405
57%CO-38%VI-5%PA



Cat. X 14111
75%CO-25%PL



Cat. M 35100
52%LI-48%VI



Cat. Y 22386
85%PES-15%CO



Cat. X 14096
100%PL



Cat. Y 23219 VELVET
100%PL



Cat. S 45403
57%CO-38%VI-5%PA



Cat. Y 23276
100%PL



Cat. Y 23210
100%PL



Cat. M 35101
52%LI-48%VI



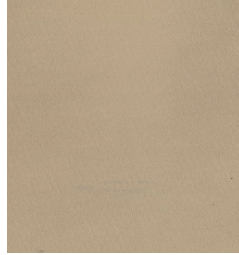
Cat. Y 23314
63%CO-29%PL-8%AF



Cat. Y 23290
100%PL



Cat. M 32509
40%VI-20%PL-20%CO-20%LI



Cat. X 14098 VELVET
100%PL



Cat. X 14110
75%CO-25%PL



Cat. X 14099 VELVET
100%PL



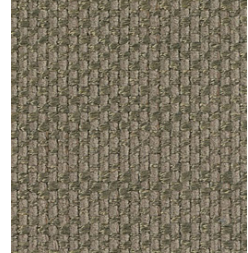
Cat. M 35117
52%LI-48%VI



Cat. Y 23306
68%PC-28%PL-4%VI



Cat. Y 23289
100%PL



Cat. Y 23211
100%PL



Cat. X 14100 VELVET
100%PL



Cat. S 45402
100%PL



Cat. Y 23307
68%PC-28%PL-4%VI



Cat. X 14109
75%CO-25%PL



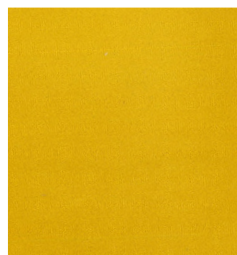
Cat. Y 23288
100%PL



Cat. Y 23297
100%PL



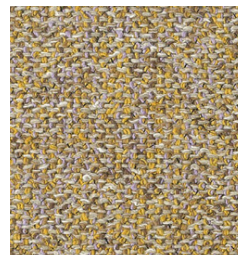
Cat. Y 23275
100%PL



Cat. Y 23311 VELVET
100%PL



Cat. X 14097 VELVET
100%PL



Cat. Y 23261
63%CO-29%PL-8%AF



Cat. Y 23304
68%PC-28%PL-4%VI



Cat. S 45396
FIRE RETARDANT BS 5852-BS 476 PART7-US



Cat. S 45397
FIRE RETARDANT BS 5852-BS 476 PART7-US



Cat. Y 23283 VELVET
100%PL



Cat. Y 23305
100%PL



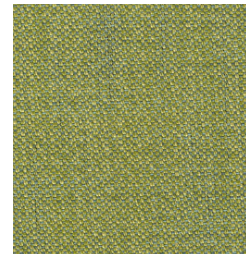
Cat. X 14108
75%CO-25PL%



Cat. Y 23273
100%PL



Cat. X 14095
100%PL



Cat. Y 23287
100%PL



Cat. Y 23296
100%PL



Cat. Y 23221 VELVET
100%PL



Cat. Y 23274
100%PL



Cat. S 45401
57%CO-38%VI-5%PA



Cat. M 32508
40%VI-20%PL-20%LI-20%CO



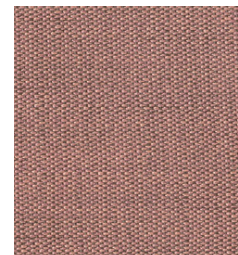
Cat. Y 23303
68%PC-28%PL-4%VI



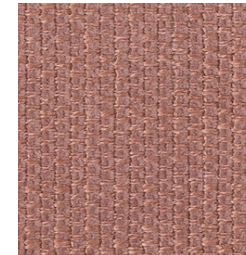
Cat. X 14029
100%CO



Cat. S 45399
57%CO-38%VI-5%PA



Cat. Y 23286
100%PL



Cat. Y 23295
100%PL



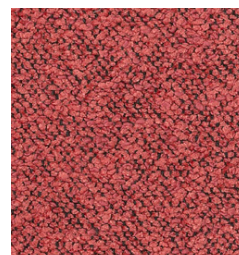
Cat. Y 23282 VELVET
100%PL



Cat. S 45411
39%VI-35%CO-16%PL-10%LI



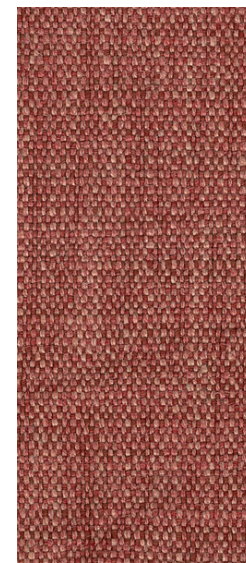
Cat. Y 23272
100%PL



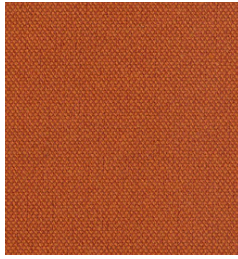
Cat. S 45400
57%CO-38%VI-5%PA



Cat. Y 23271
100%PL



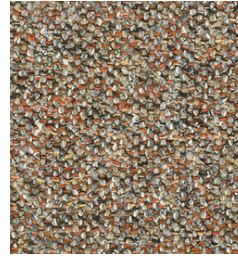
Cat. Y 23284
47%PL-23%VI-18%LI-12%PC



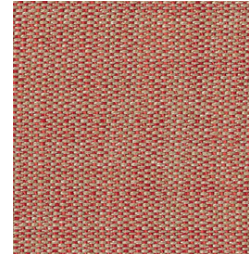
Cat. X 14105
75%CO-25%PL



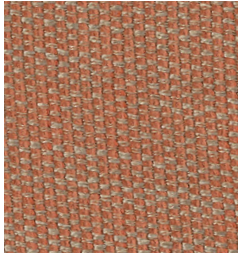
Cat. Y 23270
100%PL



Cat. Y 23260
63%CO-29%PL-8%AF



Cat. Y 23285
100%PL



Cat. Y 23208
100%PL



Cat. X 14106
75%CO-25%PL



Cat. Y 23302
68%PC-28%PL-4%VI



Cat. S 45410
39%VI-35%CO-16%PL-10%LI



Cat. S 45394
FIRE RETARDANT BS 5852-BS 476 PART7-US



Cat. S 45395
FIRE RETARDANT BS 5852-BS 476 PART7-US



Cat. Y 23281 VELVET
100%PL



Cat. X 14104
75%CO-25%PL



Cat. Y 23268
100%PL



Cat. Y 23280 VELVET
100%PL



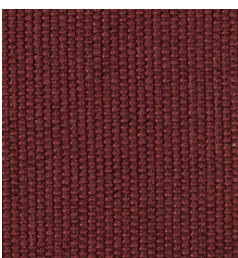
Cat. S 45408
39%VI-35%CO-16%PL-10%LI



Cat. S 45393
FIRE RETARDANT BS 5852-BS 476 PART7-US



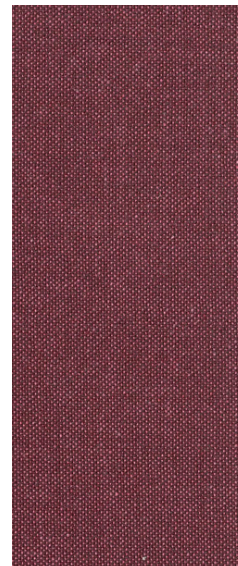
Cat. Y 23301
68%PC-28%PL-4%VI



Cat. S 45409
39%VI-35%CO-16%PL-10%LI



Cat. S 14102 VELVET
100%PL



Cat. X 14107
75%CO-25%PL



Cat. Y 23269
100%PL



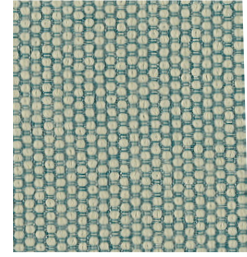
Cat. X 14034
100%CO



Cat. Y 23266
75%CO-25%PL



Cat. Y 23259
63%CO-29%PL-8%AF



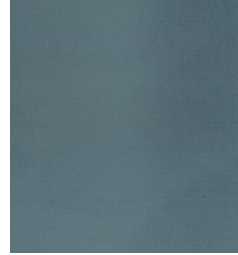
Cat. S 45392
FIRE RETARDANT BS 5852-BS 476 PART7-US



Cat. S 45406
68%PC-28%PL-4%VI



Cat. Y 23206
100%PL



Cat. Y 23278 VELVET
100%PL



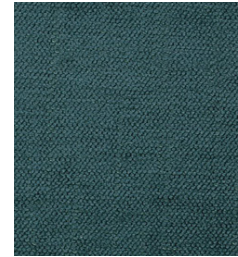
Cat. S 45398
57%CO-38%VI-5%PA



Cat. Y 23300
68%PC-28%PL-4%VI



Cat. S 45407
39%VI-35%CO-16%PL-10%LI



Cat. Y 23267
75%CO-25%PL



Cat. Y 23279 VELVET
100%PL



Cat. Y 23264
75%CO-25%PL



Cat. X 14101 VELVET
100%PL



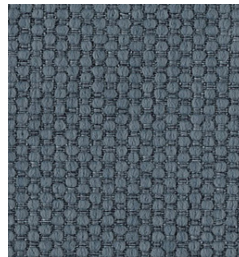
Cat. Y 23294
100%PL



Cat. S 45389
FIRE RETARDANT BS 5852-BS 476 PART7-US



Cat. S 45390
FIRE RETARDANT BS 5852-BS 476 PART7-US



Cat. S 45391
FIRE RETARDANT BS 5852-BS 476 PART7-US



Cat. M 35142
52%LI-48%VI



Cat. X 14035
100%CO



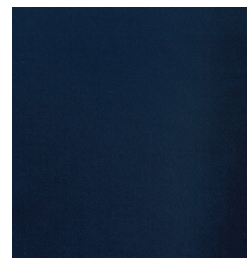
Cat. S 45390
100%CO



Cat. Y 23265
75%CO-25%PL



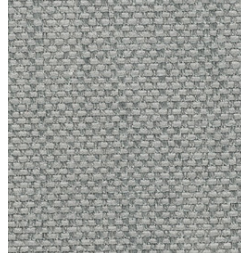
Cat. M 35104
52%LI-48%VI



Cat. Y 23224 VELVET
100%PL



Cat. Y 22388
85%PES-15%CO



Cat. Y 23292
100%PL



Cat. M 35103
52%LI-48%VI



Cat. S 45426
43%VI-36%CO-2%PV-3%LI



Cat. Y 23262
75%CO-25%PL



Cat. Y 22423
85%PES-15%CO



Cat. Y 23263
75%CO-25%PL



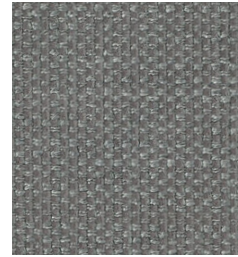
Cat. Y 23258
63%CO-29%PL-8%AF



Cat. S 45373
43%VI-36%CO-2%PV-3%LI



Cat. Y 22424
85%PES-15%CO



Cat. Y 23293
100%PL



Cat. X 14103
75%CO-25%PL



Cat. Y 23299
68%PC-28%PL-4%VI



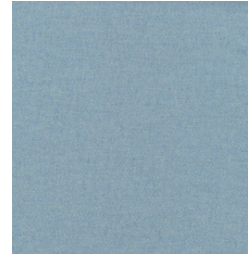
Cat. S 45412
80%WO-20%PA FIRE RETARDANT



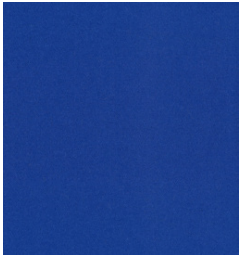
Cat. S 45413
80%WO-20%PA FIRE RETARDANT



Cat. S 45414
80%WO-20%PA FIRE RETARDANT



Cat. S 45415
80%WO-20%PA FIRE RETARDANT



Cat. S 45416
80%WO-20%PA FIRE RETARDANT



Cat. S 45417
80%WO-20%PA FIRE RETARDANT



Cat. S 45418
80%WO-20%PA FIRE RETARDANT



Cat. S 45419
80%WO-20%PA FIRE RETARDANT



Cat. S 45420
80%WO-20%PA FIRE RETARDANT



Cat. S 45421
80%WO-20%PA FIRE RETARDANT



Cat. S 45422
80%WO-20%PA FIRE RETARDANT



Cat. S 45423
80%WO-20%PA FIRE RETARDANT



Cat. S 45424
80%WO-20%PA FIRE RETARDANT



Cat. S 45425
80%WO-20%PA FIRE RETARDANT



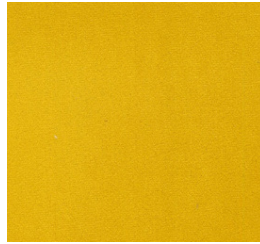
Cat. S 45422
80%WO-20%PA FIRE RETARDANT



Cat. S 45423
80%WO-20%PA FIRE RETARDANT



Cat. Y 23313 VELVET
100%PL



Cat. Y 23311 VELVET
100%PL



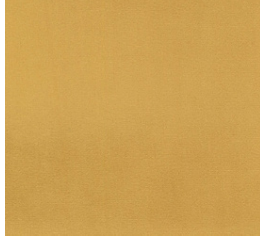
Cat. Y 23281 VELVET
100%PL



Cat. X 14101 VELVET
100%PL



Cat. Y 23219 VELVET
100%PL



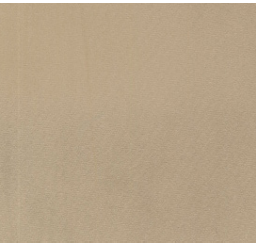
Cat. X 14097 VELVET
100%PL



aaa
aaa



aaa
aaa



Cat. X 14098 VELVET
100%PL



Cat. Y 23288 VELVET



Cat. X 14102 VELVET
100%PL



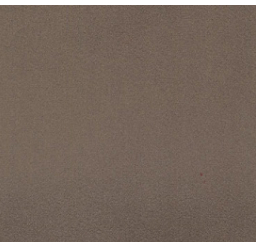
Cat. X 14099 VELVET
100%PL



Cat. Y 23221 VELVET
100%PL



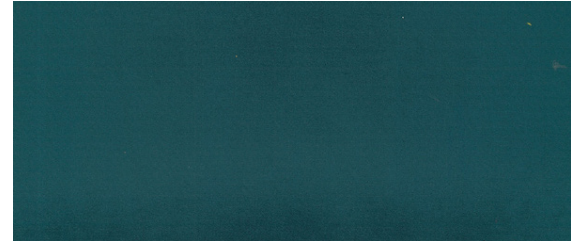
Cat. Y 23278 VELVET
100%PL



Cat. X 14100 VELVET
100%PL



Cat. Y 23282 VELVET
100%PL



Cat. Y 23279 VELVET
100%PL

Leathers

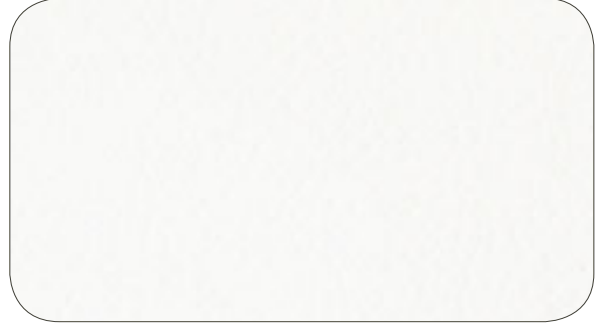
Pelli

Natural leather offers an unbeatable feel, a perfect close fit and extraordinary comfort.

La pelle naturale regala un'inimitabile sensazione tattile, una perfetta aderenza alle forme e un comfort straordinario.



Cat. K
Leathers | Pelli



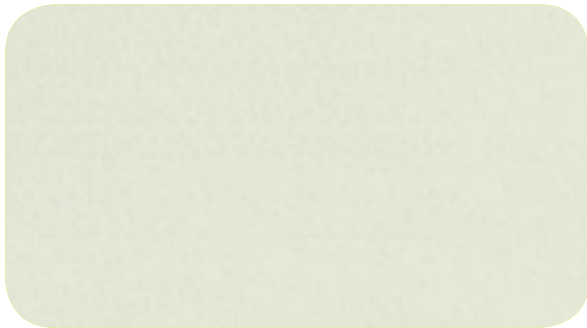
Cat. K 02 White



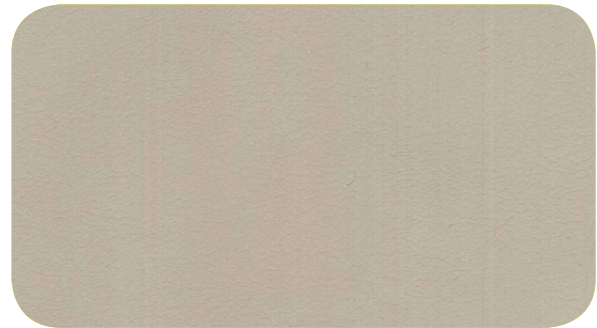
Cat. K 80 Cream



Cat. 81 Sand



Cat. K 830 Warm Grey



Cat. K 16 Dove Brown



Cat. K 022 Cappuccino



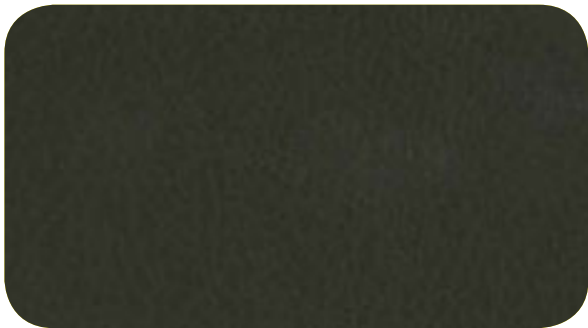
Cat. K 05 Mud



Cat. K 12 Tan



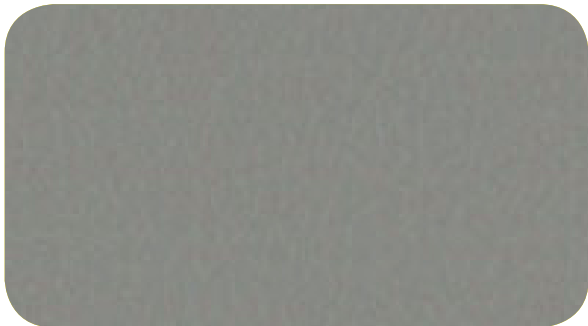
Cat. K 988 Brown



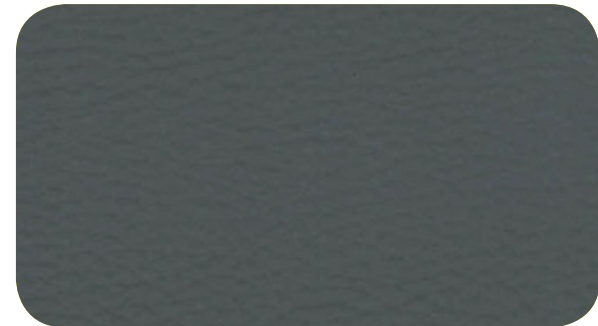
Cat. K 23 Moka



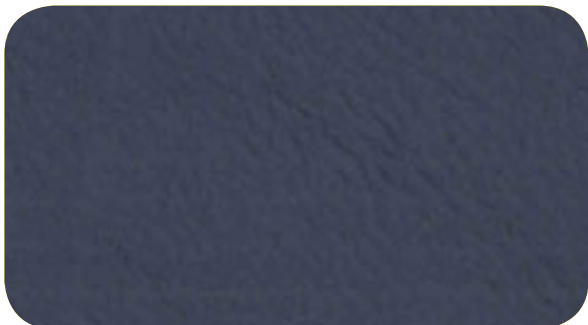
Cat. K 24 Bordeaux



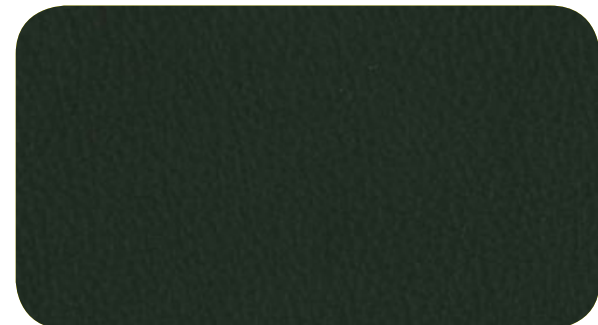
Cat. K 840 Grey



Cat. K 04 Dark Grey



Cat. K 21 Blue



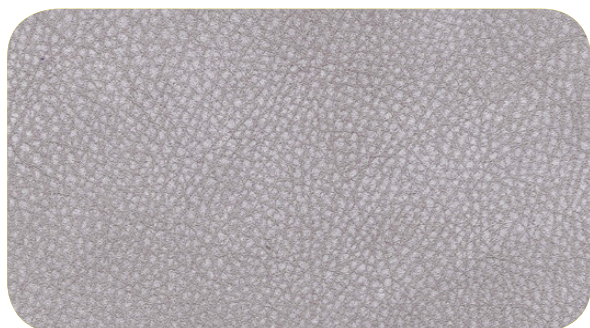
Cat. K 01 Black

Cat. VIP

Leathers | Pelli

Chrome-tanned leathers, dry vacuum leather finished with aniline and manually buffed obtaining a worn-look. A special combination between an old-fashioned vintage look and a superbly soft touch.

Pelli conciate al cromo, asciugate sottovuoto, rifinite con aniline e carteggiate manualmente ottenendo un effetto invecchiato. Particolarità di questo articolo è il connubio tra l'effetto "vintage" e un tatto vellutato.



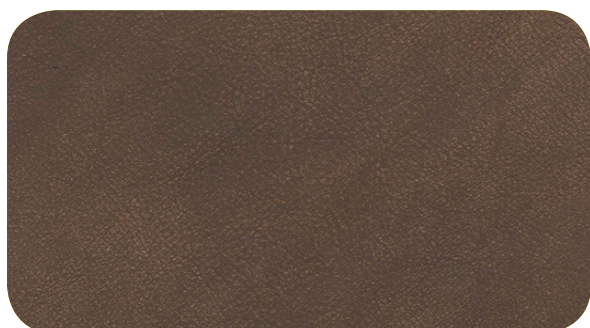
Cat. VIP 72147 Grey



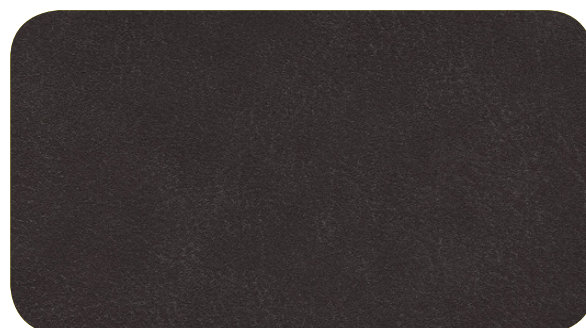
Cat. VIP 72148 Sand



Cat. VIP 72153 Rubin



Cat. VIP 72150 Moka



Cat. VIP 72151 Coffee



Cat. VIP 72162 Red Corral



Cat. VIP 72163 Dusty Rose



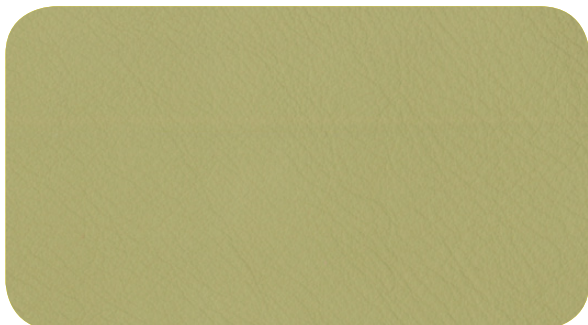
Cat. VIP 72164 Apricot



Cat. VIP 72165 Aquamarine



Cat. VIP 72166 Sage



Cat. VIP 72157 Pistachio



Cat. VIP 72161 Green

Cat. TOP

Leathers | Pelli

Chrome-tanned leathers, dry vacuum leather finished with aniline and manually buffed obtaining a worn-look. A special combination between an old-fashioned vintage look and a superbly soft touch.

Pelli conciate al cromo, asciugate sottovuoto, rifinite con aniline e carteggiate manualmente ottenendo un effetto invecchiato. Particolarità di questo articolo è il connubio tra l'effetto "vinta-ge" e un tatto vellutato.



Cat. TOP 80713 Blue



Cat. TOP 82144 Yellow



Cat. TOP 82142 Brown

Finishes

Finiture

The purity of the raw material, the harmony of the essence and identity of the product.

La purezza della materia prima, l'armonia dell'essenza e dell'identità del prodotto.



Wood lacquers Laccature legno



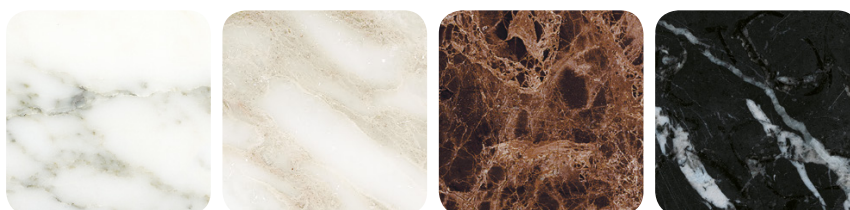
Epoxy steel lacquers and wood lacquers

Laccature epossidiche per metallo e laccature legno



Marbles

Marmi



Michelangelo

Calacatta

Michelangelo

Emperador

Wood

Essenze



Heat-treated oak
Rovere termotrattato

Black oak
Rovere nero

Oak-stained ash
Frassino tinto rovere

Mahogany stained ash
Frassino tinto mogano