

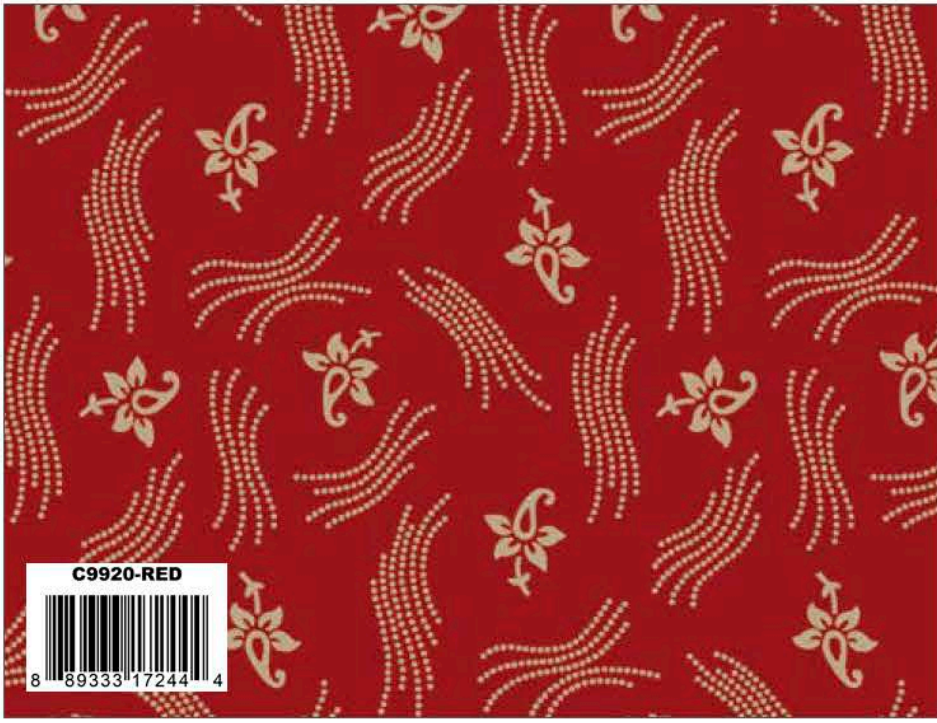

Riley Blake
DESIGNS


BLESSED
Beyond
MEASURE

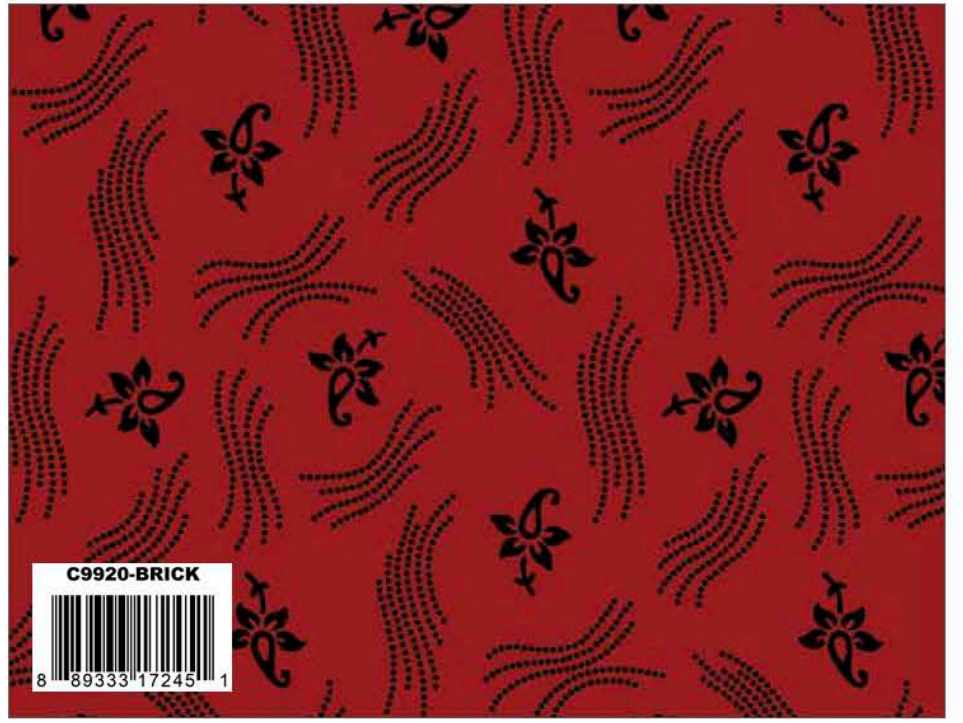
BUTTERMILK
BASIN
DESIGN CO.



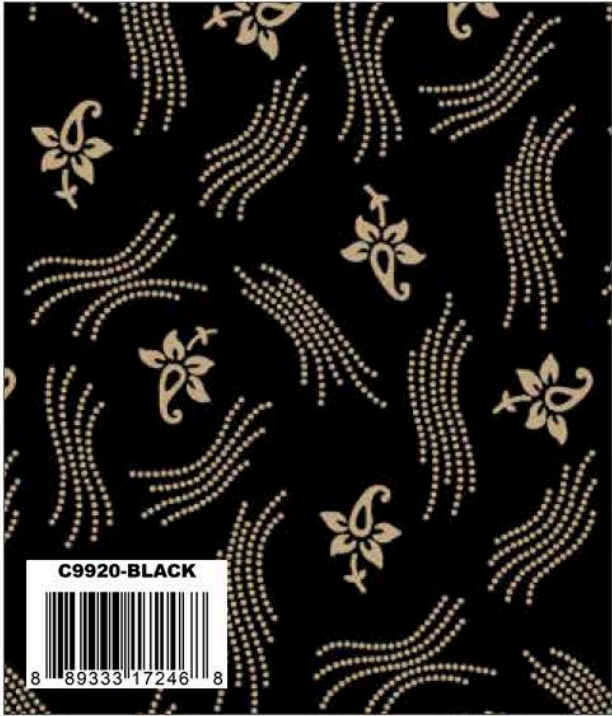
AVAILABLE
AUGUST 2020
R-1



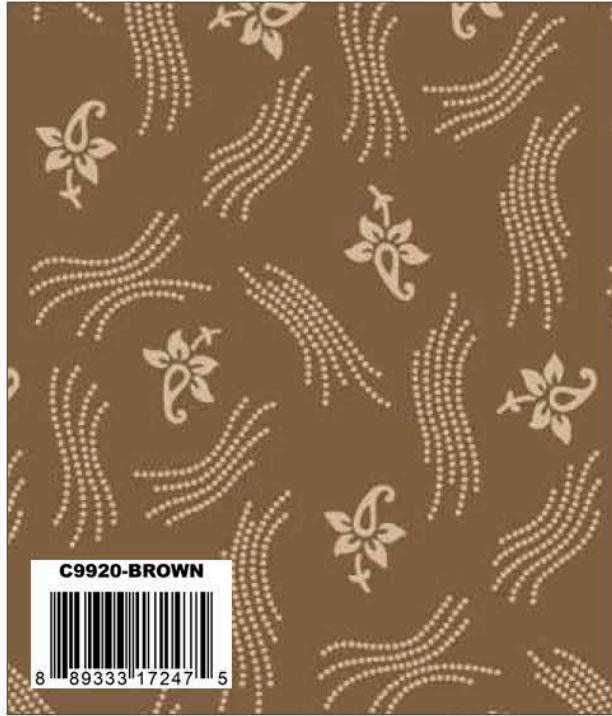
Red Flourish



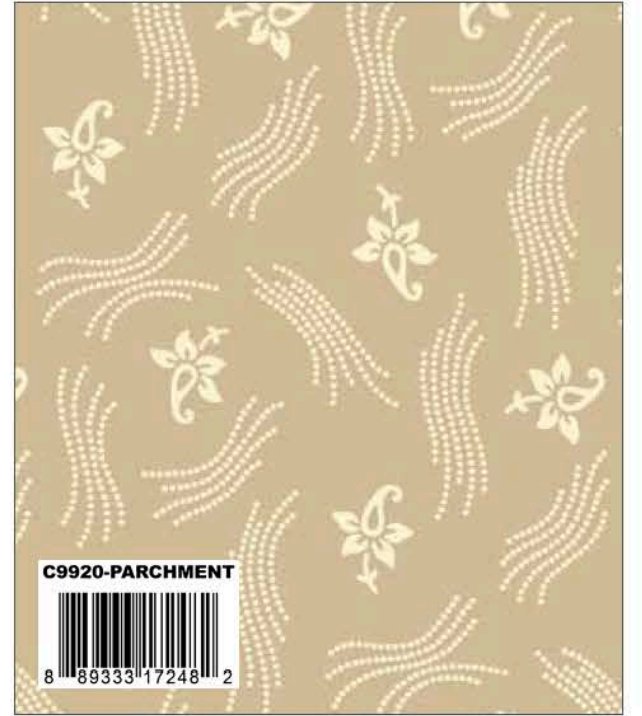
Brick Flourish



Black Flourish



Brown Flourish



Parchment Flourish



Red Serpentine



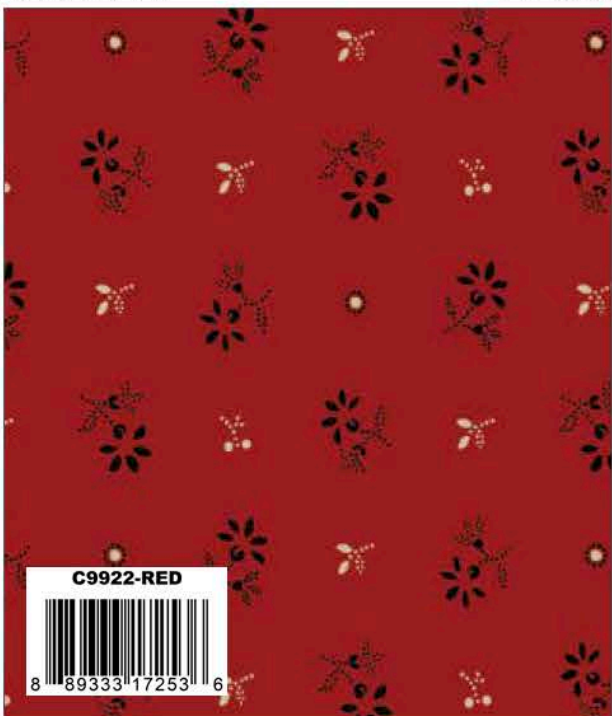
Black Serpentine



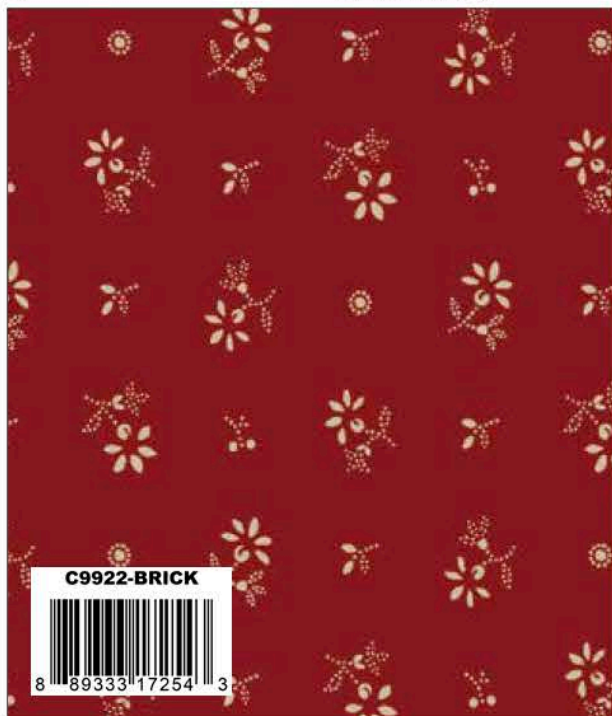
Tan Serpentine



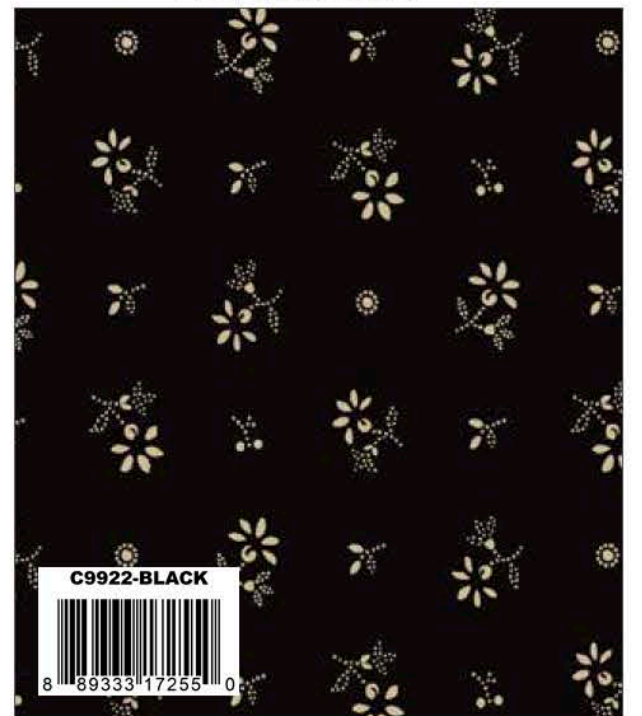
Parchment Serpentine



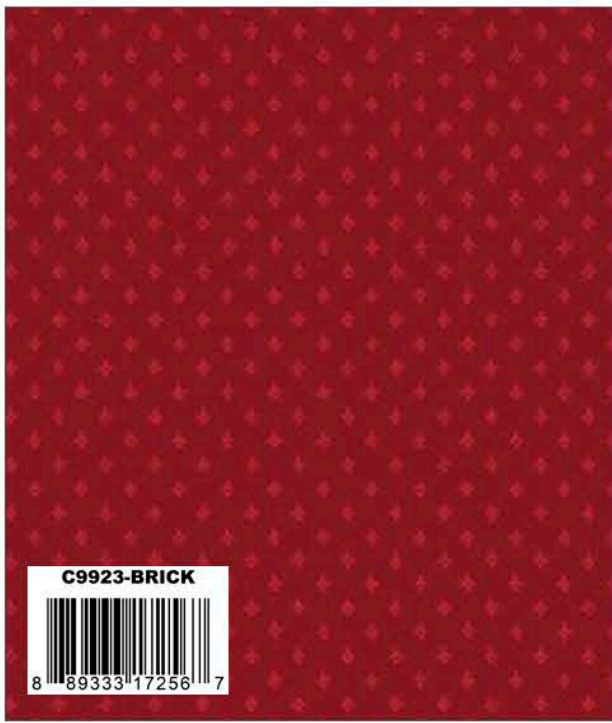
Red Ditsy



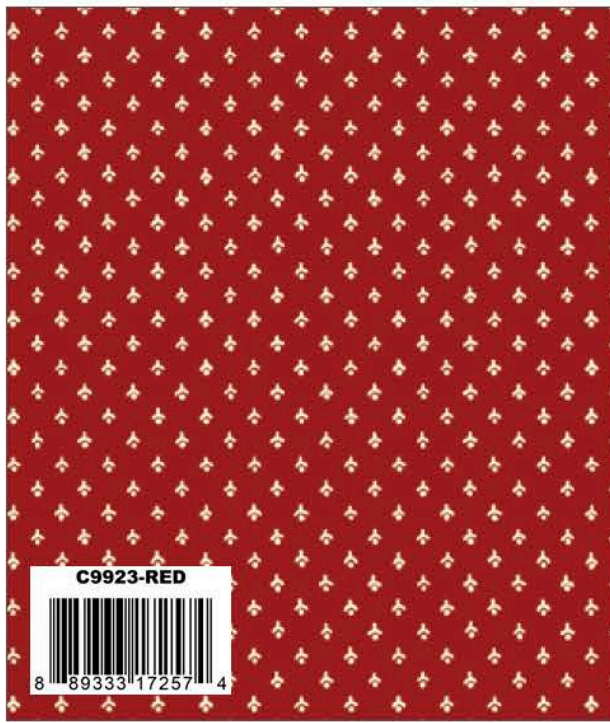
Brick Ditsy



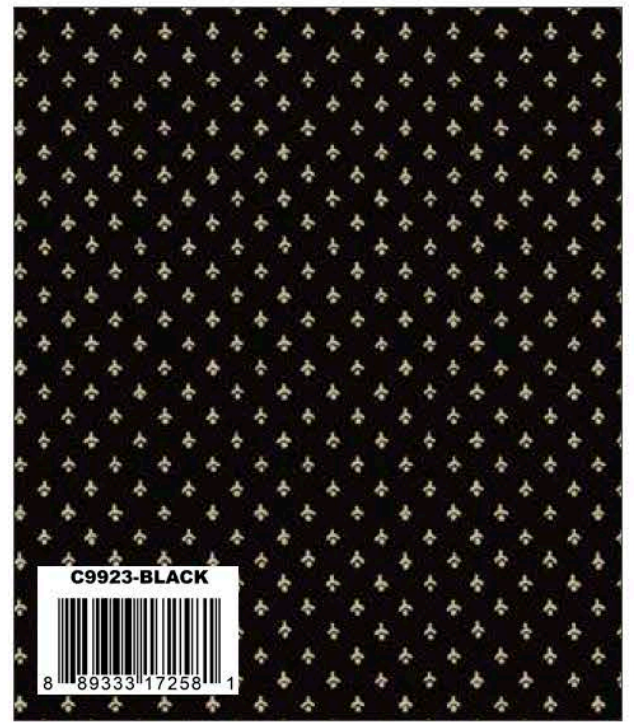
Black Ditsy



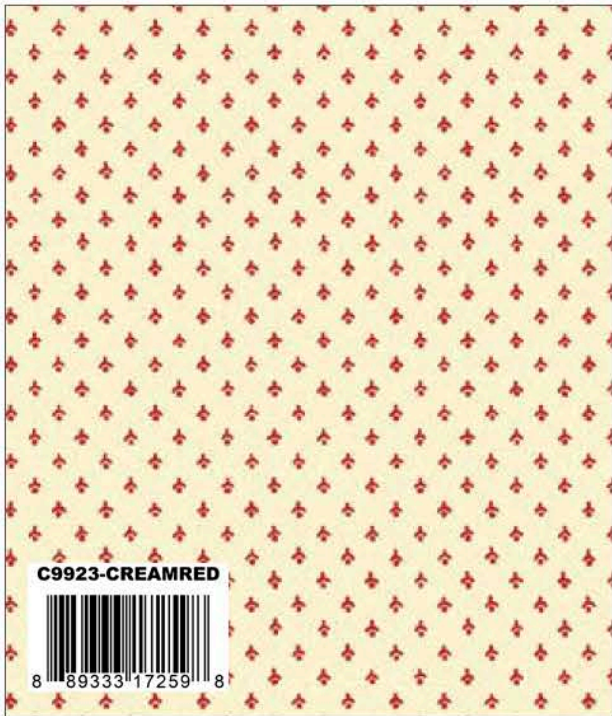
Brick Pointe



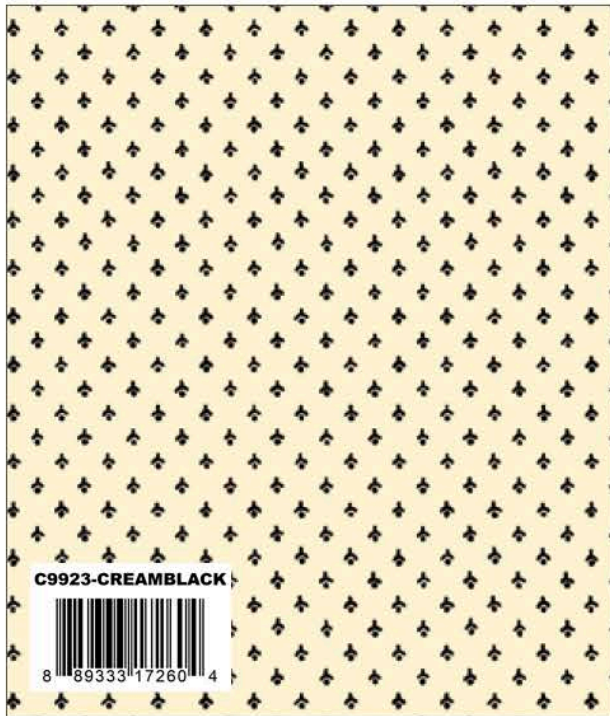
Red Pointe



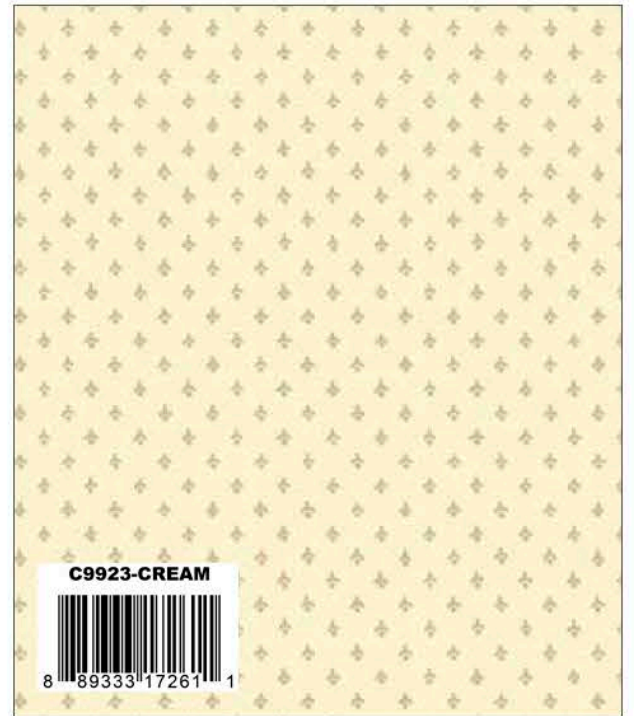
Black Pointe



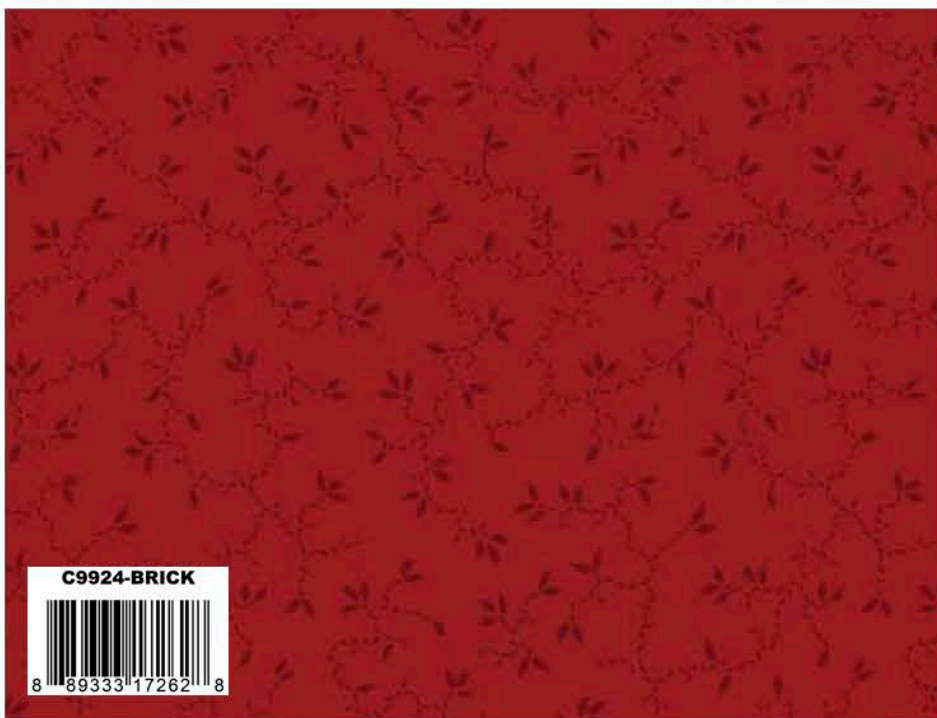
Cream/Red Pointe



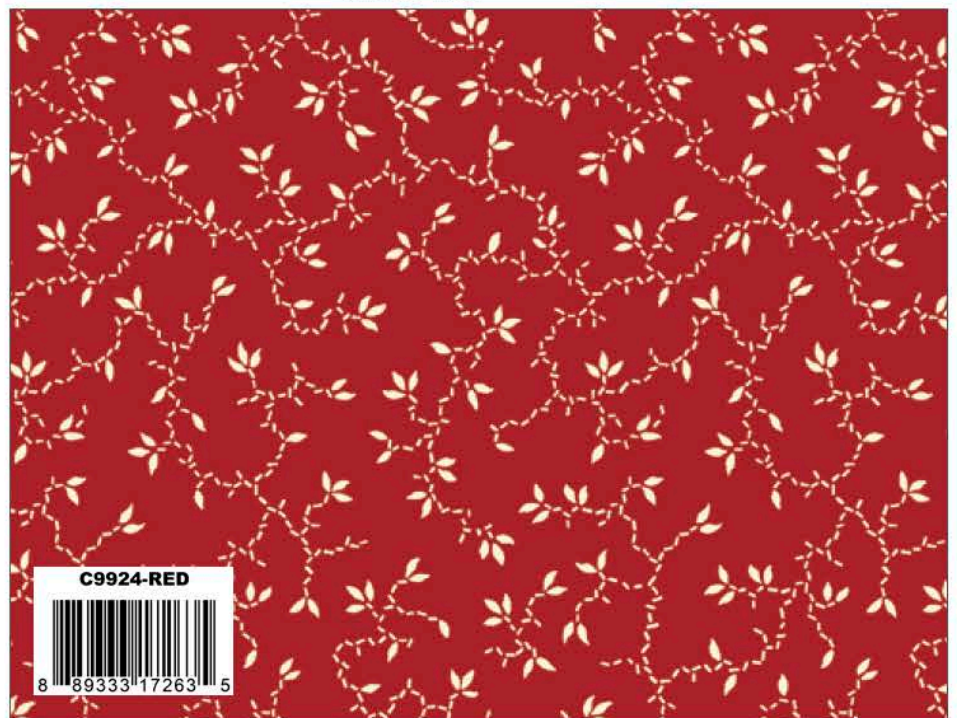
Cream/Black Pointe



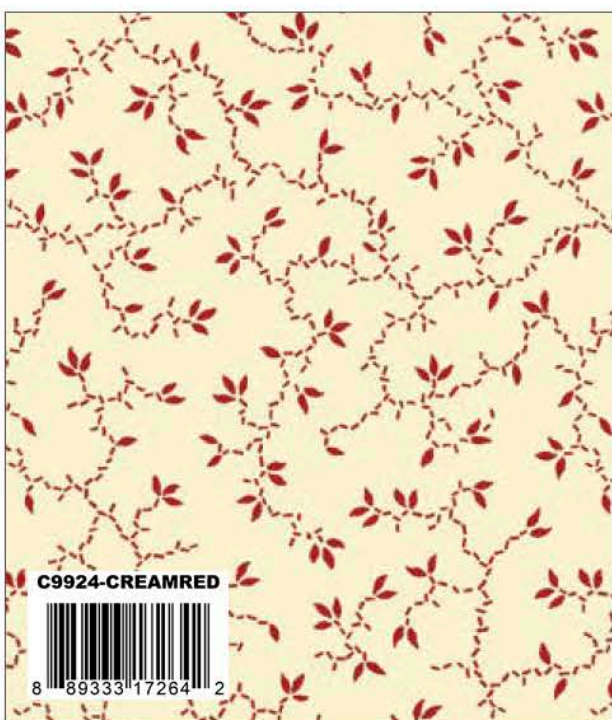
Cream Pointe



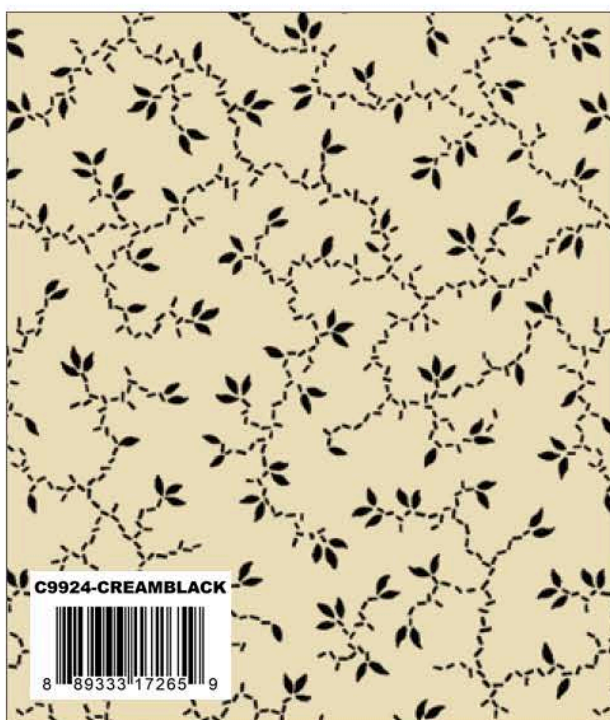
Brick Vines



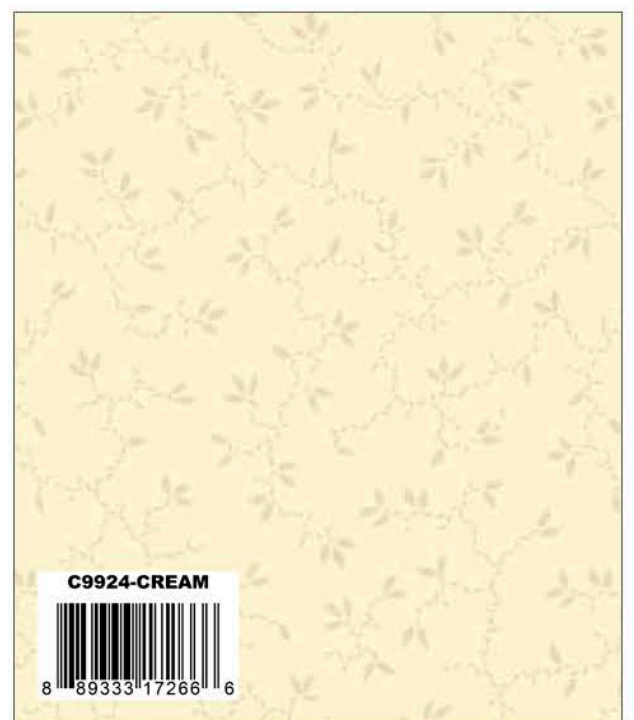
Red Vines



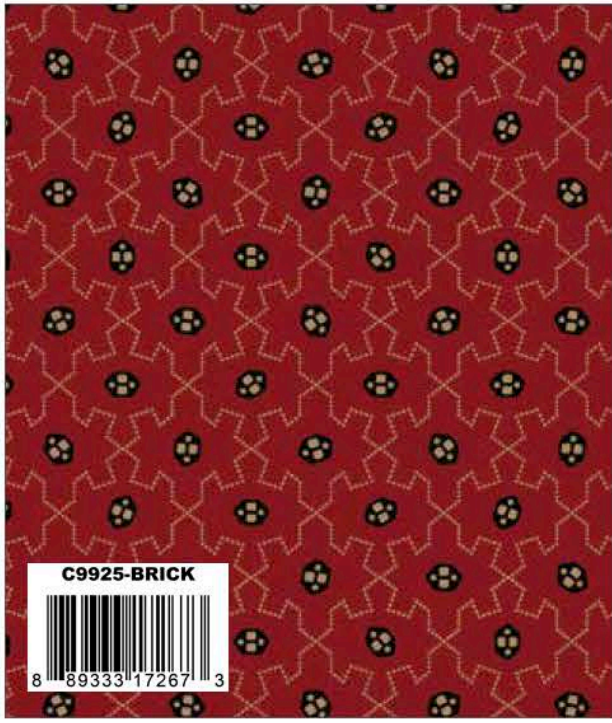
Cream/Red Vines



Cream/Black Vines

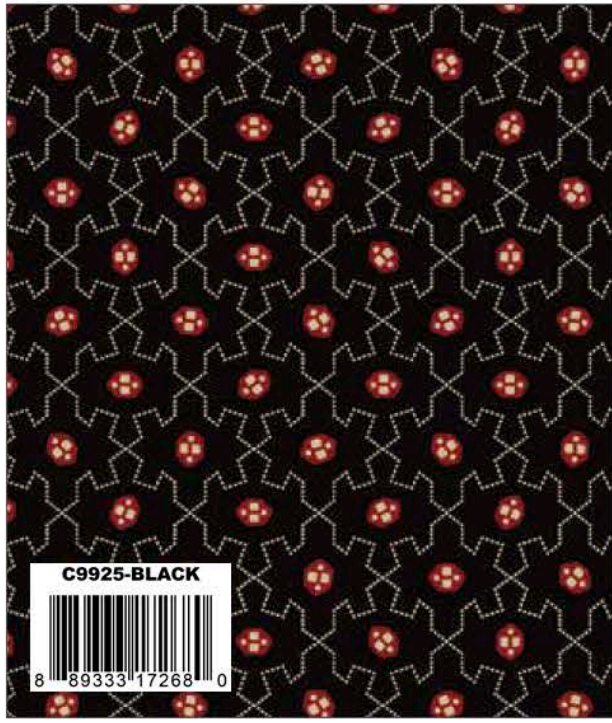


Cream Vines



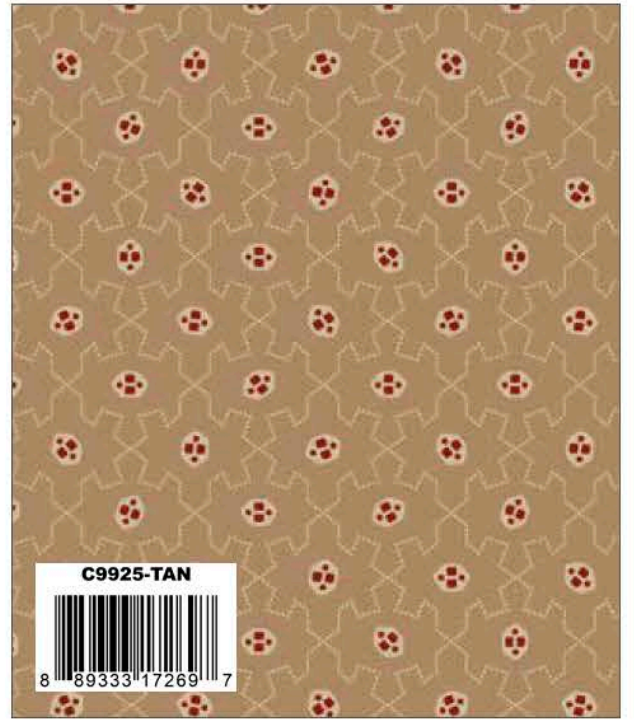
C9925-BRICK
8 89333 17267 3

Brick Puzzles



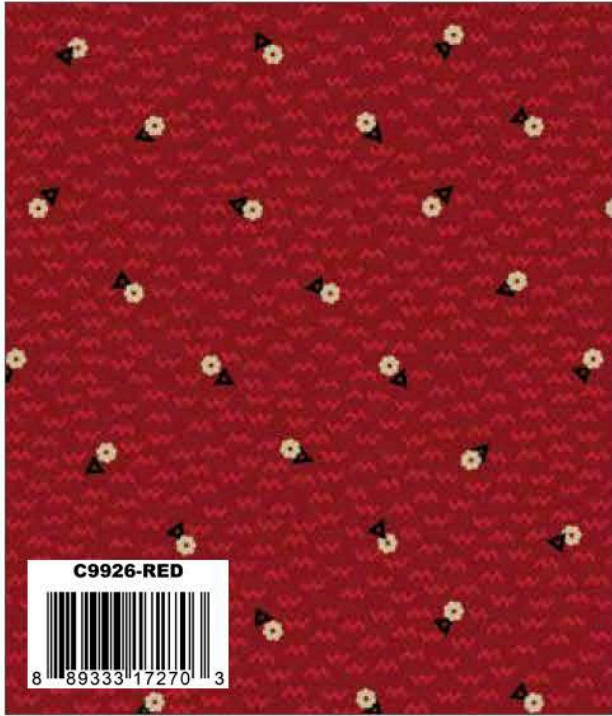
C9925-BLACK
8 89333 17268 0

Black Puzzles



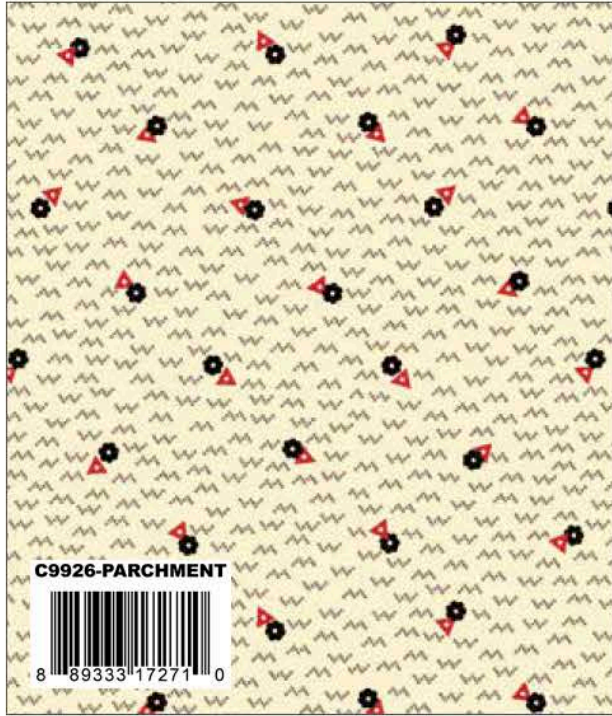
C9925-TAN
8 89333 17269 7

Tan Puzzles



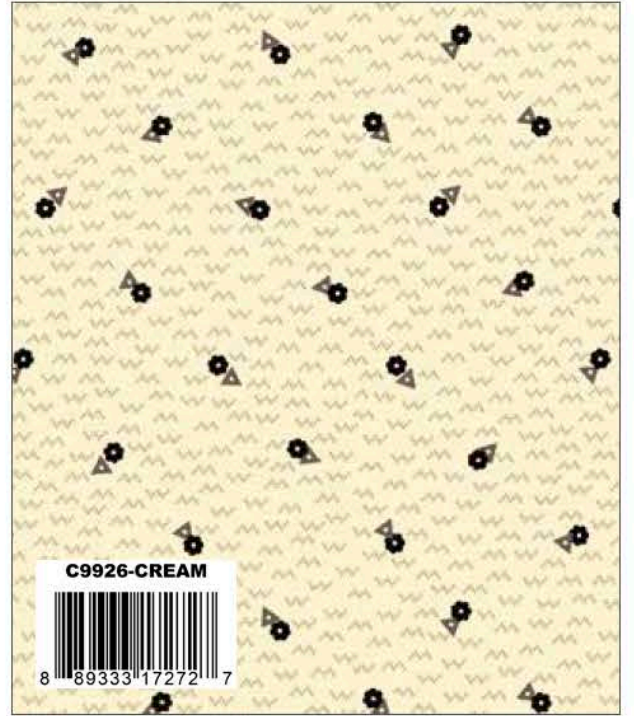
C9926-RED
8 89333 17270 3

Red Geo



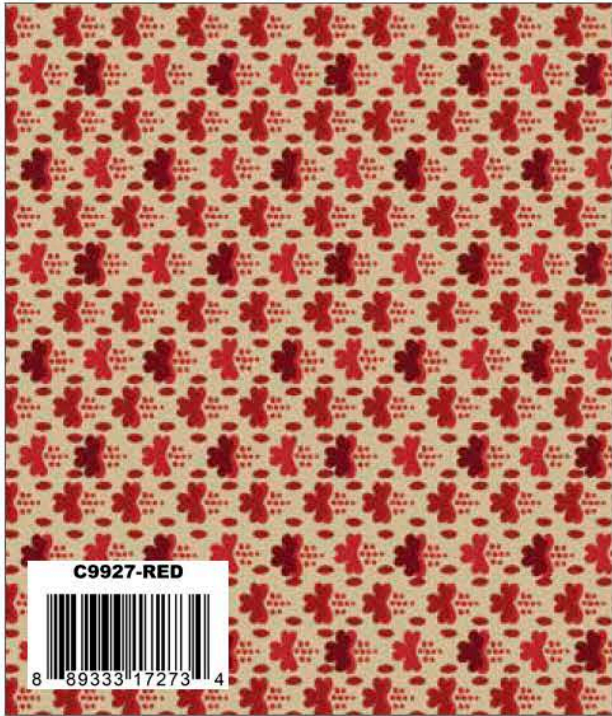
C9926-PARCHMENT
8 89333 17271 0

Parchment Geo



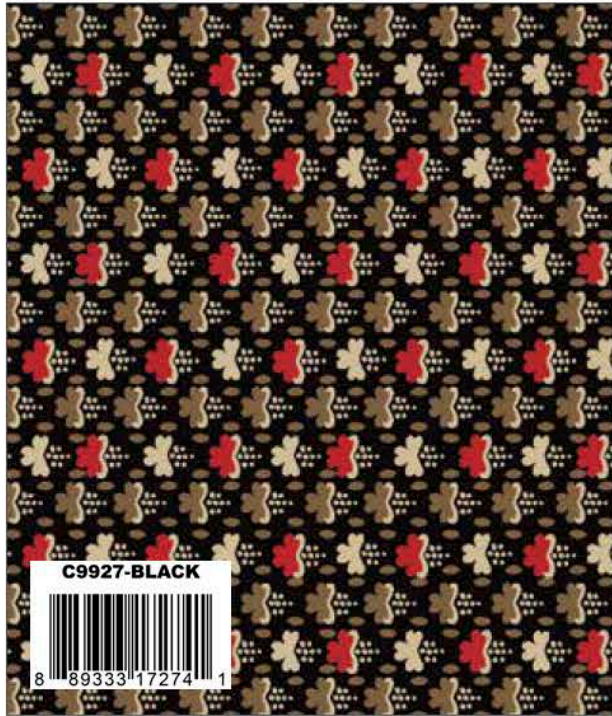
C9926-CREAM
8 89333 17272 7

Cream Geo



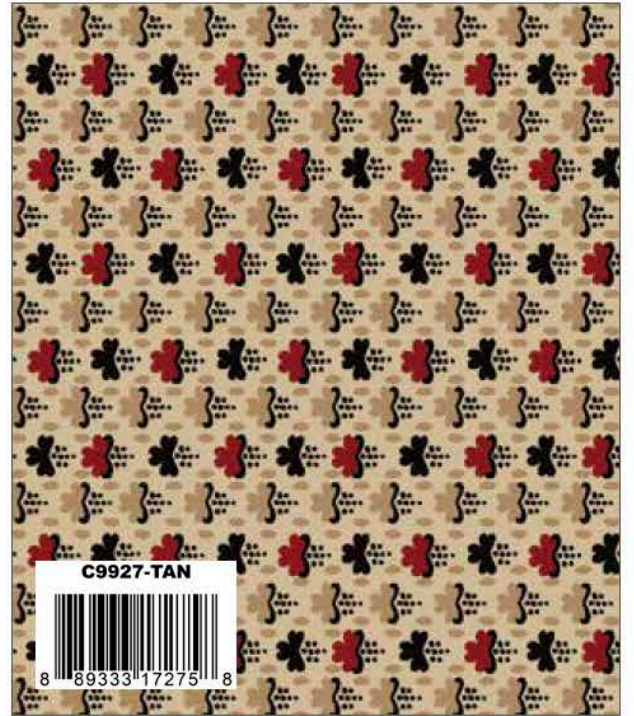
C9927-RED
8 89333 17273 4

Red Clover



C9927-BLACK
8 89333 17274 1

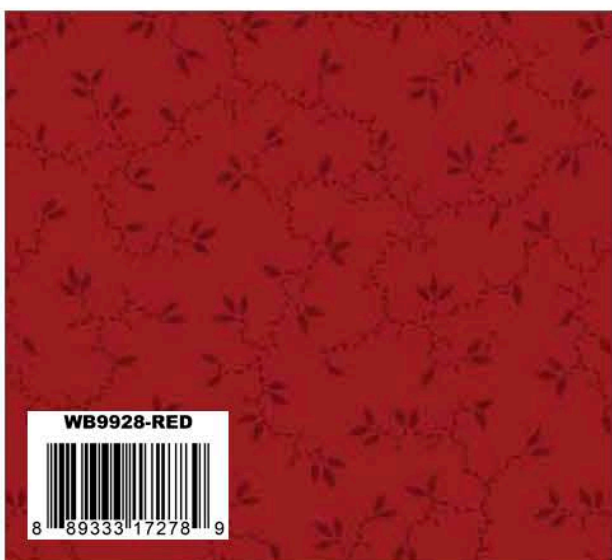
Black Clover



C9927-TAN
8 89333 17275 8

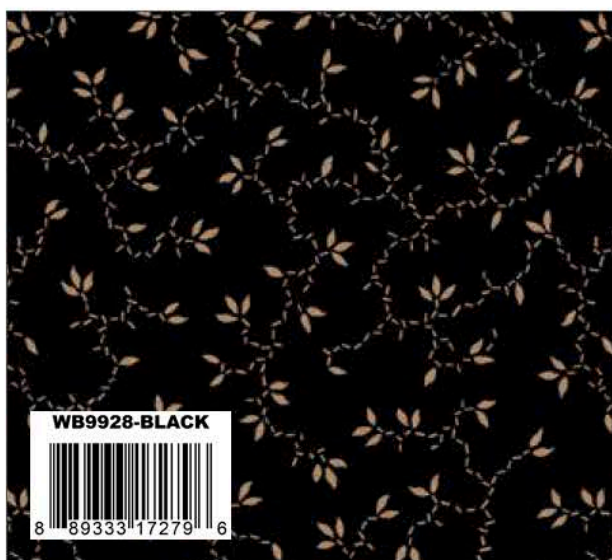
Tan Clover

Wide Back 107/108"



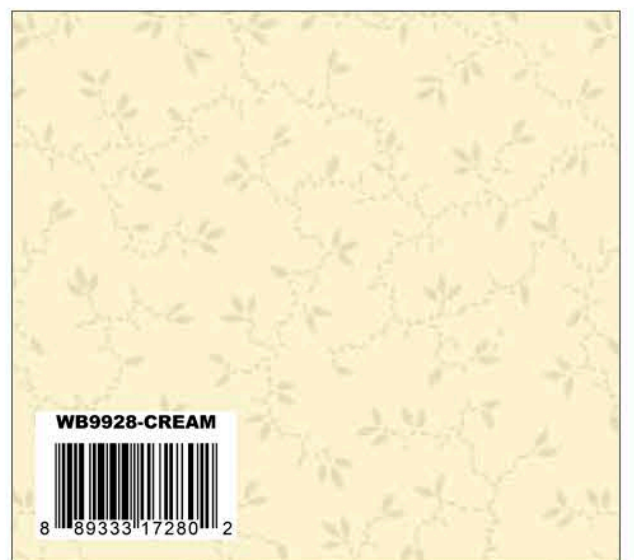
WB9928-RED
8 89333 17278 9

Red Vines Wide Back



WB9928-BLACK
8 89333 17279 6

Black Vines Wide Back



WB9928-CREAM
8 89333 17280 2

Cream Vines Wide Back

Thimble Blossoms Panel by Buttermilk Basin Design Co.



Thimble Blossoms Panel

Scaled to 19% | Actual Size is 36"x 43 1/2"

Sew Creative Panel by Buttermilk Basin Design Co.



Sew Creative Panel

Scaled to 15% | Actual Size is 36"x 43 1/2"

Thimble Blossoms Panel Quilt by Stacy West



Quilt Size 57" x 65"

Fabric Requirements

- 1 P9929 Thimble Blossoms Panel
- 1/8 Yard of each Blessed Beyond Measure Prints
- 3/4 Yard C9923 Black Pointe
- 1/2 Yard C9924 Cream Vines
- 1/4 Yard C9924 Brick Vines
- 1/2 Yard Binding
- Black and Red Wool – Corner Buttons



Pre-order the P152-Thimble Blossoms Quilt Pattern

Thimble Blossoms Mini Panel Quilt by Stacy West



Quilt Size 28" x 28"

Fabric Requirements

- 1 P9929 Thimble Blossoms Panel
- 1/2 Yard C9923 Black Pointe (Includes Binding)
- 1/8 Yard C9924 Red Vines
- 1/2 Yard C9925 Tan Puzzle

Free Quilt Pattern will be available at www.rileyblakedesigns.com

Blessed Beyond Measure Sampler Quilt by The RBD Designers



Quilt Size 53" x 66"

Retailers may purchase the Blessed Beyond Measure Sampler Quilt pattern Booklet from Riley Blake Designs

You're Invited!

Blessed Beyond Measure Sampler Quilt Sew Along with Stacy West of Buttermilk Basin and Riley Blake Designs.

Every week we'll post an image of a finished block and helpful information.

When
Starting October 2020

Where
Buy the pattern at www.buttermilkbasin.com and create with us!

Follow along on the Riley Blake Designs blog – blog.rileyblakedesigns.com

Any Day Spent Sewing Is a Good Day!

Fabric Requirements

- 1 FQ-9920-32 Fat Quarter Bundle
- 1 Yard C9923 Black Pointe
- 5/8 Yard C9923 Cream Pointe
- 3/8 Yard C9924 Cream Vines
- 5/8 Yard C9926 Cream Geo
- Binding 1/2 Yard

P152-BLESSEDBEYOND



Pre-order the P152-Blessed Beyond Measure Pattern Booklet

Sew Creative Pillows by Stacy West

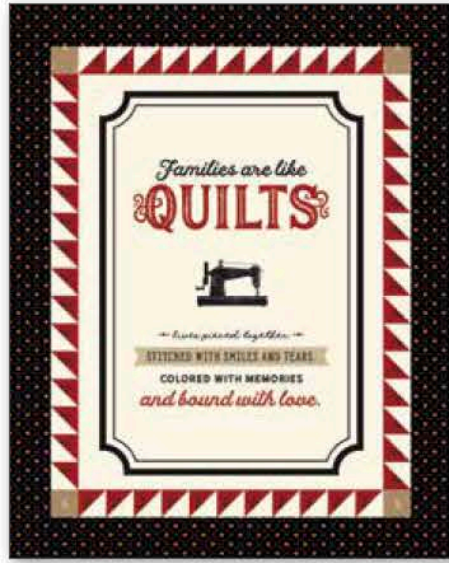
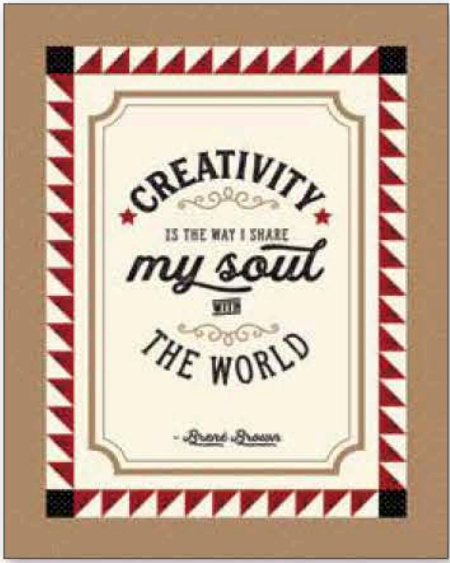


Pillow Size 16" x 16"



Pre-order the P152-Sew Creative Pillow Pattern

Sew Creative Panels by Stacy West



Panel Size 16" x 20"



Pre-order the P152-Sew Creative Panel Pattern

Handwork Mends My Soul by Stacy West



Design Size 16" x 20"



Pre-order the P152-Handwork Mends My Soul Pattern

Welcome by Stacy West



Runner Size 10 1/2" x 27 1/2"



Pre-order the P152-Welcome Runner Pattern

Sewing Icons Wool Mat by Stacy West



Pre-order the
P152-Sewing Icons
Wool Mat Pattern



Mat Size 17" x 17"

Sew Creative Table Runners by Stacy West



Runner Size 12" x 34"



Fabric Requirements

1 P9930 Sew Creative Panel

1 5-9920-42 Blessed Beyond Measure 5-Inch Stacker (Per Runner)

1/4 Yard C9925 Brick Puzzle (Runner 1), C9923 Black Pointe (Runner 2)

1/4 Yard C9923 Black Pointe (Runner 1), C9925 Tan Puzzles (Runner 2) Binding



Pre-order the
P152-Sew Creative
Runner Pattern

About the Line



Blessed Beyond Measure is a curated collection inspired by growing up with three generations of handwork and sewing enthusiast women. It features a vintage sewing machine that my great grandmother, Lily, taught me to sew on and one that I inherited once my mother, Linda, passed away.

I built the collection around memories of playing in Lily's button box, working on 4-H projects, gardening with my talented mother, and watching over my grandma Avis' shoulder as she embroidered. Even though these women have passed, I will continue to share their passion for working with their hands in my daily life and be forever grateful for the memories shared over needle and thread.

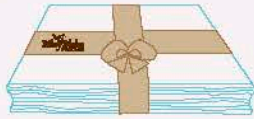
"The bloom may be brief, but the memory of its beauty will last a lifetime!"

BUTTERMILK BASIN DESIGN CO.

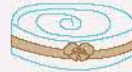
5-Inch Stacker
42 Pieces



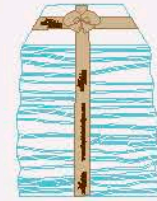
10-Inch Stacker
42 Pieces



Rolie Polie
40 Pieces



Fat Quarter



PRE-ORDER ONLY

ADD ANY LAMINATE WITH 100 YARDS MINIMUM

10-Yard Case Pack



15-Yard Case Pack



AVAILABLE AUGUST 2020

100% FINE COTTON 43/44" WIDE • MACHINE WASH COLD • NO CHLORINE BLEACH • TUMBLE DRY LOW • REMOVE PROMPTLY

Riley Blake Designs • 9646 South 500 West, Sandy, Utah 84070

Toll Free 1.888.768.8454 • Tel 801.816.0540 • Fax 801.816.0542

www.rileyblakedesigns.com

Not intended for children's sleepwear

©2020 Riley Blake Designs and Stacy West

MADE IN KOREA