

SOLTAIRE TELESCOPIC

HENDERSON

120kg Wood Interior

For sliding telescopic wooden doors weighing up to 120kg

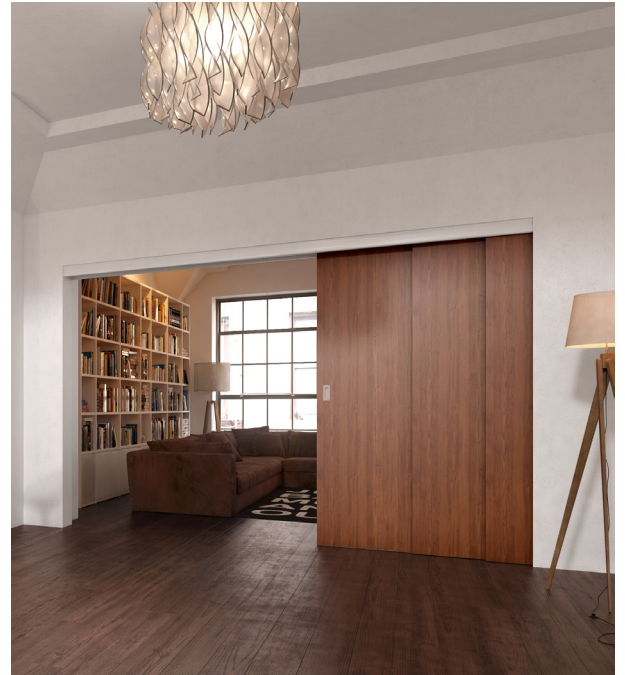
Overview

Soltaire Telescopic caters for top hung, telescopic, wooden doors weighing up to 120kg. Designed using a toothed belt and pulley system, the doors are linked together so that as the user opens or closes one door, the others will follow. The system also incorporates a coveted ghost guide which keeps the walkway clear and free from trip hazards.

Available in 2, 3 or 4 door variants, the doors can be neatly stacked to the side in front of one another or also incorporated into a cavity wall.

Features and Benefits

- Doors are linked together via a toothed belt and pulley, allowing them to travel simultaneously
- Our 2 and 3 door system allows doors to be concealed on the same side of the opening, maximising the opening and reducing the wall space required for a standard sliding system
- Our 4 door system allows 2 doors to open to both sides of the opening, allowing for open plan living
- System is non handed, the follower door is anchored via a datum block



Product and Door Specification

Kit Short Code	No. of Doors	Min. Door Width	Max. Door Width	Door Thickness Range	Max. Door Weight
TEL120/2	2	500mm	1200mm	35 - 47mm	120kg
TEL120/3	3	500mm	1200mm	35 - 47mm	120kg
TEL120/4SIM	4 (2+2)	500mm	1200mm	35 - 47mm	120kg

Track Specification - Must be purchased in addition to telescopic kit

Component	Description	Short Code
Track	Anodised aluminium track in 2000, 2500, 3000, 4000, 5000 & 6000mm lengths	120/****

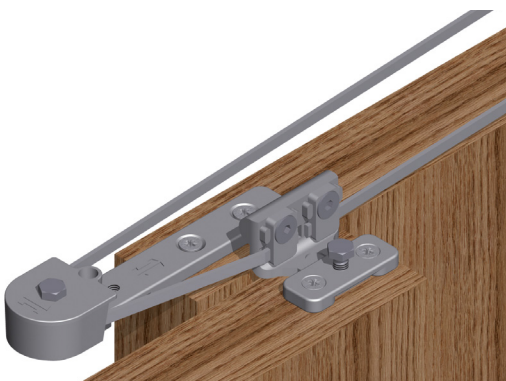
****Replace by length of track for full short code

Kit Contents

Component	TEL120/2 Quantity	TEL120/3 Quantity	TEL120/4 Quantity
Hanger (51/120/SS)	4	6	8
Track Stop (HH4/SS)	2	2	2
Short Bearing Wheel Assembly	1	2	2
Door Mounted Belt Fixing Bracket	1	2	4
Length of Toothed Belt	1	1	1
Following Door Guide	1	2	2
Fixed Base Floor Guide	1	2	2
Long Bearing Wheel Assembly	1	2	2
Wall Mounted Belt Fixing	1	1	2

Accessories

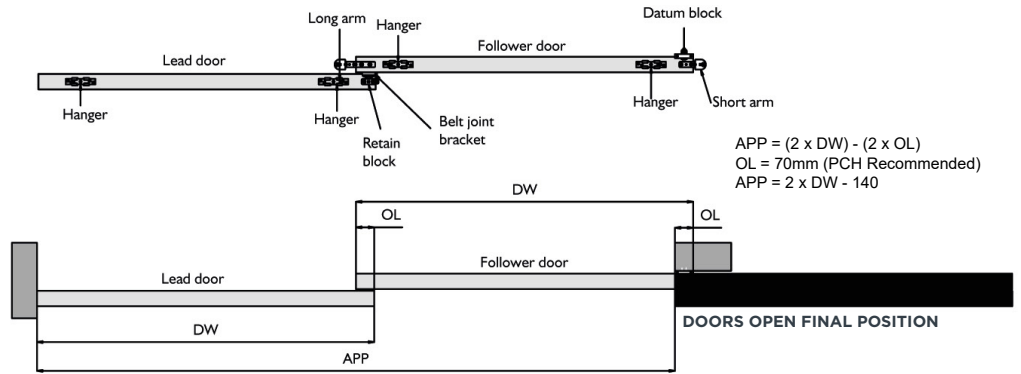
144B	Black Oval Flushpull	144mm (h) x 44mm (w)	
144S	Satin Oval Flushpull	144mm (h) x 44mm (w)	
385SA	Satin Round Flush Pull Set	Outer diameter - 59.5mm Inner diameter - 48mm	
385PB	Polished Brass Round Flush Pull Set	Outer diameter - 59.5mm Inner diameter - 48mm	



2 Door System

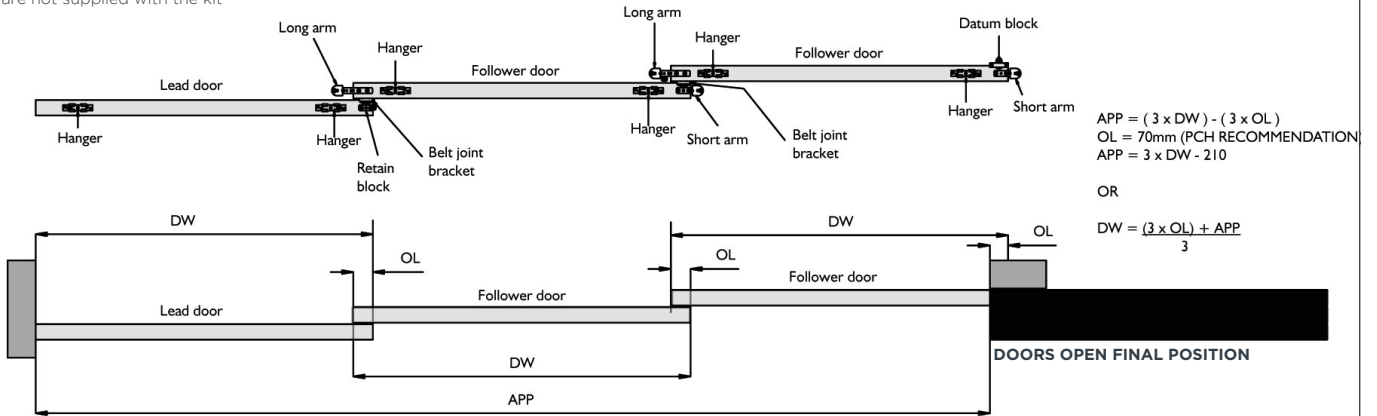
Hangers are not supplied with the kit

Key	
DT	Thickness
TSH	Track set height
DH	Door height
S	Gap required between tracks
OL	Overlap of doors (recommended 70mm)
APP	Max. clear opening width
X	PCH recommended top clearance (63.5mm)



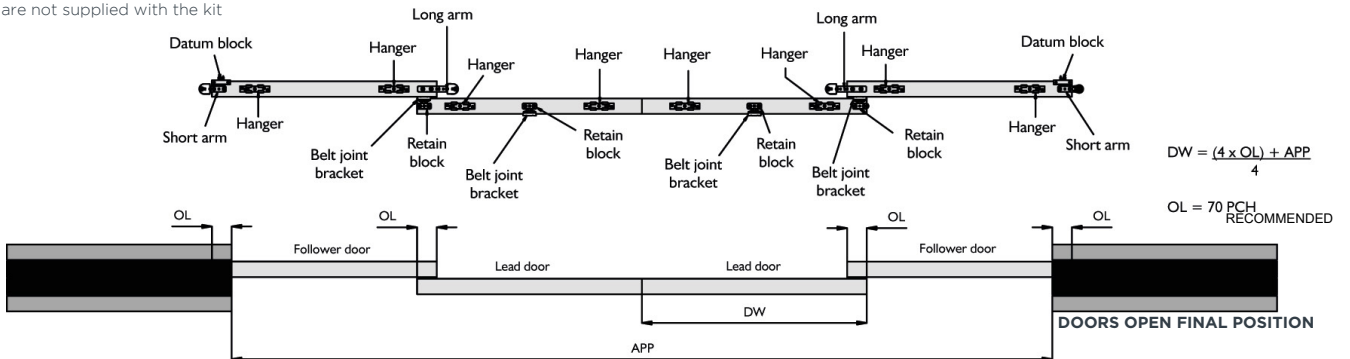
3 Door System

Hangers are not supplied with the kit

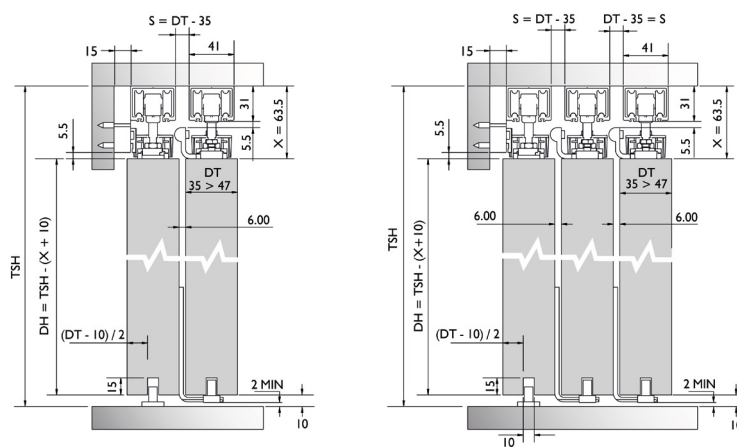


4 Door System

Hangers are not supplied with the kit



End Elevation



For further information, please contact us on:

UK Sales

T: +44 (0) 191 377 7345

E: sales@pchenderson.com

W: www.pchenderson.com

Export Sales

T: +44 (0) 191 377 7346

E: international@pchenderson.com

W: export.pchenderson.com