

# SECUREFOLD ULTRA HENDERSON

100kg Wood Interior Exterior Aluminium

The ultimate folding door hardware solution for doors weighing up to 100kg

## Overview

Securefold Ultra possesses all of the features and benefits of our standard Securefold system but has been expertly designed to provide an additional level of security.

The system has been designed with a number of elements to make it one of the most secure bifolding door hardware systems on the market - including a multipoint lock with anti-snap and anti-bump cylinder and a unique interlocking anti-tamper hinge.

Tested to both PAS 24 (UK) and BS EN 1627 (European) security standards, the system boasts uncompromised security.

The system also includes the addition of R Loc - a clever ratchet system that enables installers to easily raise and lower a door, eliminating the need to lock the hanger in place with a grub screw.

Available in a range of stunning finishes - satin, gold, chrome and black - this system can complement virtually any colour scheme.

## Features and Benefits

- Extremely weather and corrosion resistant with all components being made from 316 stainless steel
- Designed with a unique interlocking hinge which boosts anti-tamper properties making it difficult to dismantle
- Three points of locking on every external door seam to enhance security
- Tested to PAS24 and BS EN 1627 RC2 security standards



## Product Information

Product	Max. Door Height	Max. Door Width	Door Thickness Range*	Max. Door Weight
Securefold Ultra	3300mm	1000mm	48 - 68mm	100kg

\* For thick and/or narrow width doors please consult our fitting instructions regarding 'camming'. For doors between 35 - 47mm use an alternative flushbolt.

## Product Specification

Component	Description	Ultra
Track	Anodised aluminium track - 2000, 2500, 3000, 3500, 4000, 5000 and 6000mm lengths	250/****
Pivot	Pivot assembly	SFU1#
Hangers	End hanger set, left hand	SFU2L#
	End hanger set, right hand	SFU2R#
	Intermediate hanger set kit	SFU4#
	End hanger rebated meeting kit	SF8#
Hinges	Hinge handle set inward opening	SF3#
	Hinge handle offset outward opening	SF7#
	Intermediate pivot hinge	SFU9#
Channel	Polypropylene channel in black - 2000, 2500, 3000, 3500, 4000, 5000 and 6000mm lengths	94P/****
	Anodised aluminium support channel - 2000, 2500, 3000, 3500, 4000, 5000 and 6000mm lengths	94SC/****
Seals	Door perimeter seal in brown or white	AQ63B or AQ63W
	Frame perimeter seal in brown or white	AQ21B or AQ21W
	Track seal in black	BS15B
Flush Bolts - Locking	For outward opening - 190, 450 or 600mm lengths	SF190L# / SF450L# / SF600L#*
Handle	Handle for Securefold	SF10#

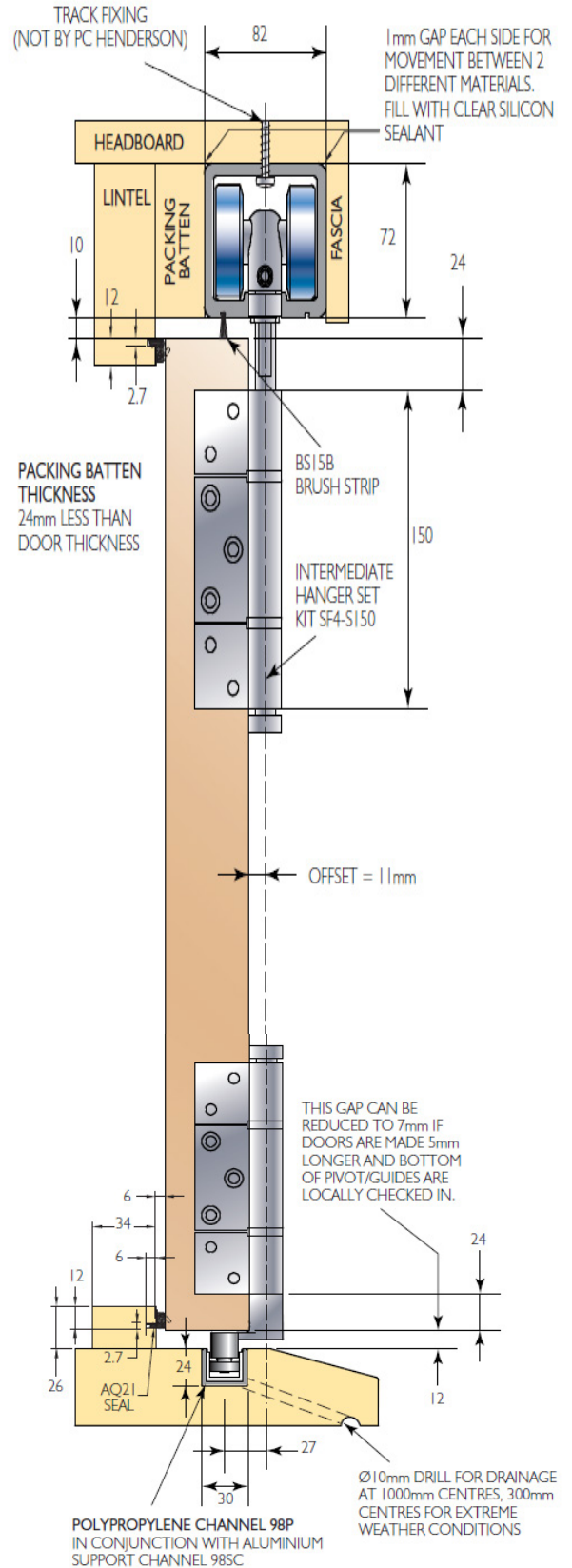
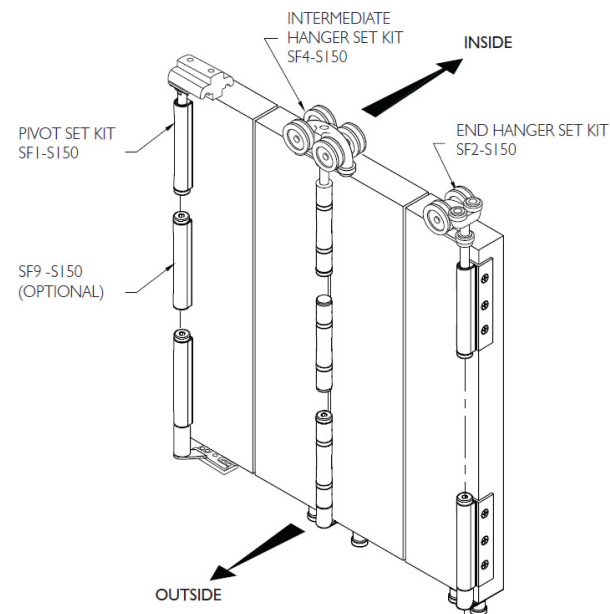
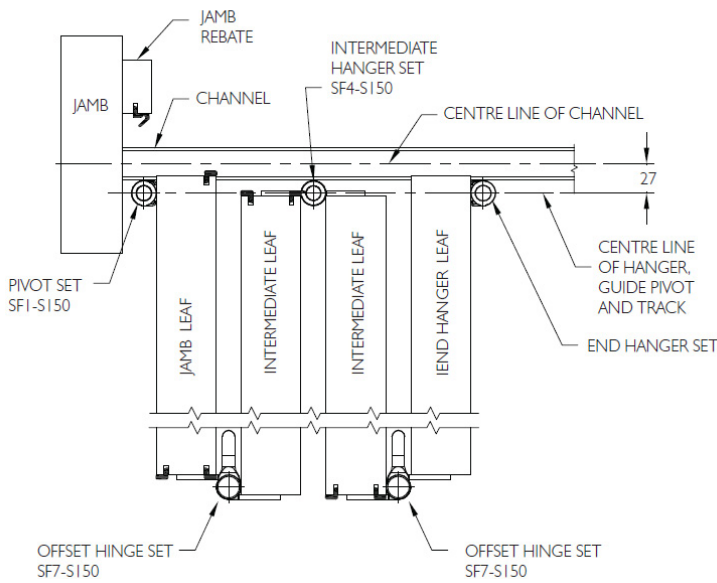
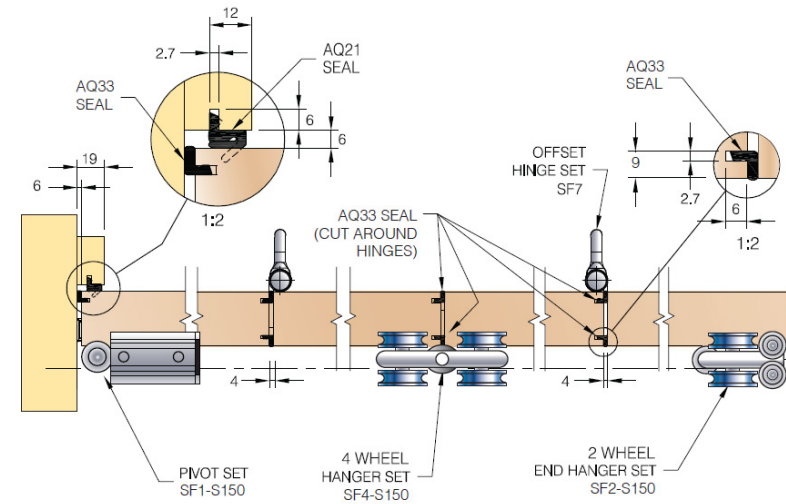
\*\*\*\* Replace with length of track for full short code

# Replace with first letter of colour - satin, gold, chrome or black

\* SF600L is only available in satin and black

# Securefold Specifier

Use our online specifier tool to quickly build a bill of materials or get a quotation at [www.pchenderson.com/securefold-specifier](http://www.pchenderson.com/securefold-specifier)



For further information, please contact us on:

**UK Sales**

T: +44 (0) 191 377 7345

E: [sales@pchenderson.com](mailto:sales@pchenderson.com)

W: [www.pchenderson.com](http://www.pchenderson.com)

**Export Sales**

T: +44 (0) 191 377 7346

E: [international@pchenderson.com](mailto:international@pchenderson.com)

W: [export.pchenderson.com](http://export.pchenderson.com)