

SOLTAIRE TELESCOPIC

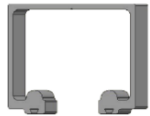
HENDERSON

4 DOOR

Fitting Instructions

KIT AND DOOR SPECIFICATION				
Kit Short Code	No of Doors	Door Width Range	Door Thickness Range	Max. Door Weight
TEL120/4SIM	4 (2+2)	500 - 1200mm	35 - 47mm	120kg

KIT CONTENTS



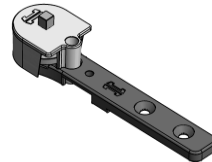
120 Track x 2



51/120/SS
Hanger x 8



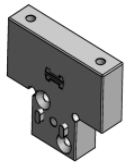
Short Arm x 2



Long Arm x 2



HH4/AN Track
Stop x 2



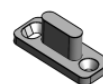
Datum Block x 2



Belt Joint
Bracket x 4



Belt Retain
Block x 4



Fixed Floor
Guide x 2



Adjustable Floor
Guide x 2



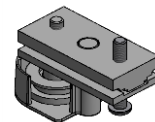
Adjustable Floor
Guide Bracket x 2



Belt Clamp x 10



Toothed Belt x 16



Pulley x 2

Screws	4 Door
M6 x 12 CSK HD	10
10G x 30 Wood Screw	26
M4 x 6 Grubscrew	2
M6 x 10 Hex HD Bolt	8

Note: Track must be specified in addition to kit

TOOLS REQUIRED



Tape Measure



2, 4 & 5mm Allen
Keys



Posi Head
Screwdriver

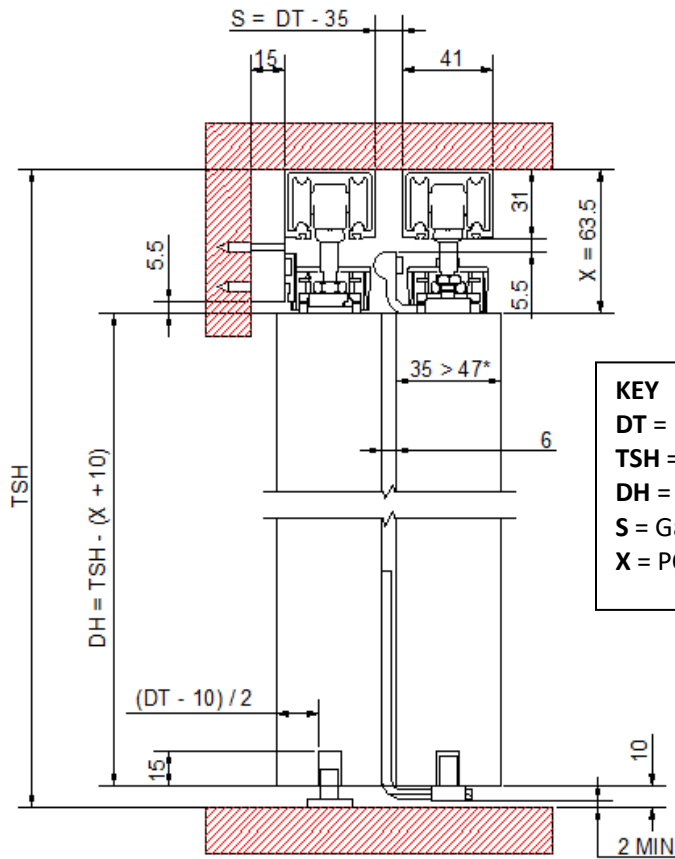


Spirit Level



Scissors

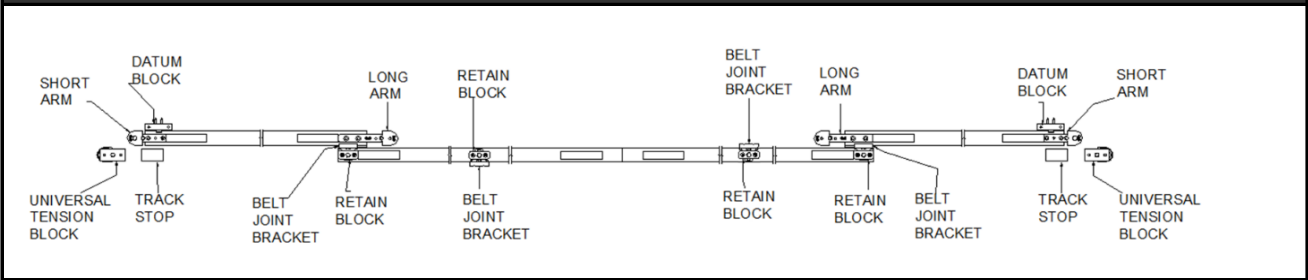
SYSTEM OVERVIEW AND TRACK INSTALLATION



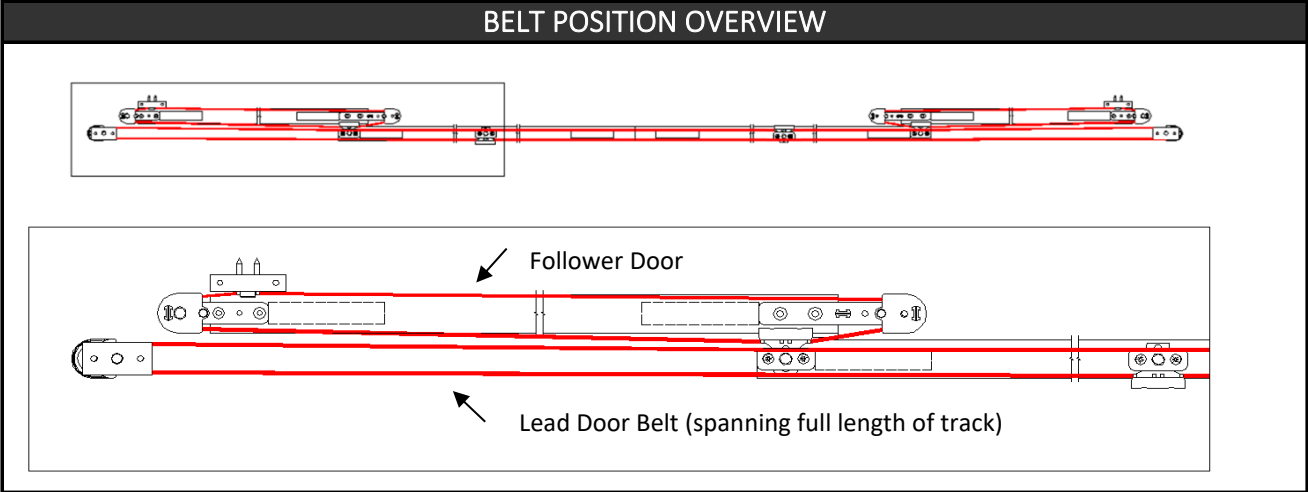
KEY

- DT** = Door Thickness
- TSH** = Track Set Height
- DH** = Door Height
- S** = Gap Required Between Tracks
- X** = PCH Recommended Top Clearance (63.5mm)

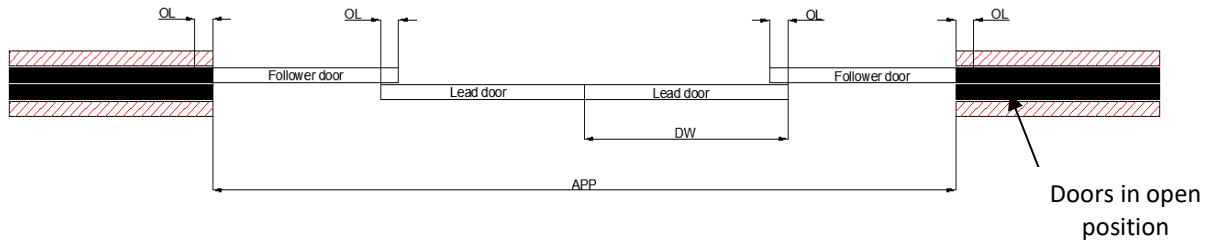
COMPONENT OVERVIEW



BELT POSITION OVERVIEW



DOOR COMPONENT LAYOUT



KEY

DW = Door Width

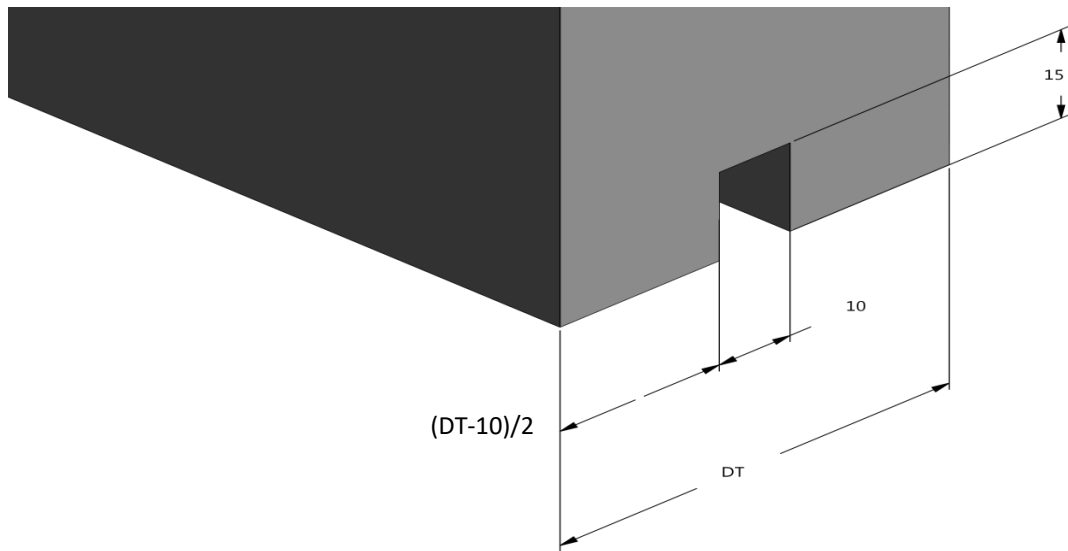
OL = Overlap of Doors (Recommended 70mm)

APP = Maximum Clear Opening Width

$$DW = \frac{(4 \times OL) + APP}{4}$$

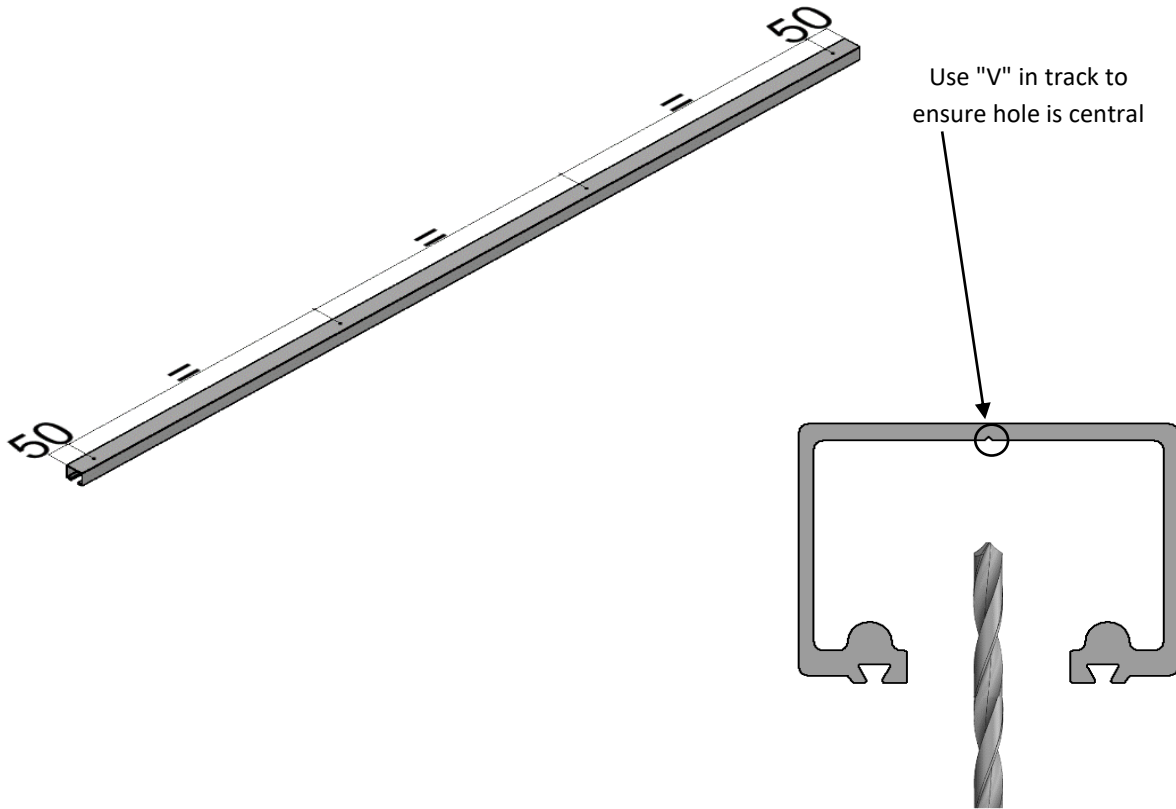
PCH Recommended OL= 70mm

DOOR FLOOR GUIDE ROUTING DETAIL

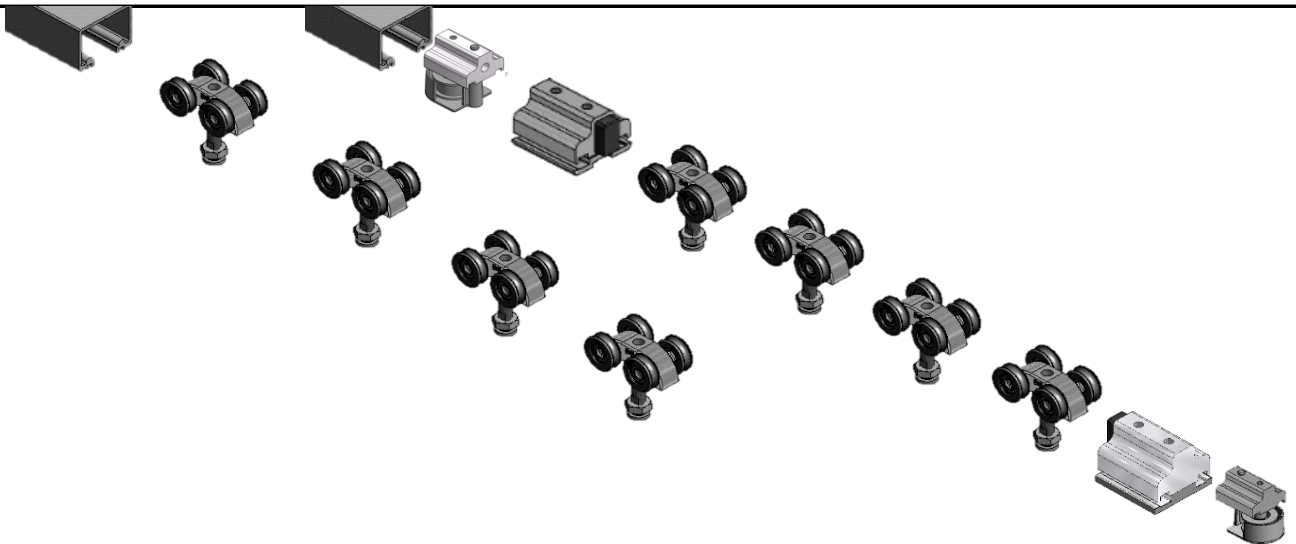


STEP BY STEP INSTRUCTIONS

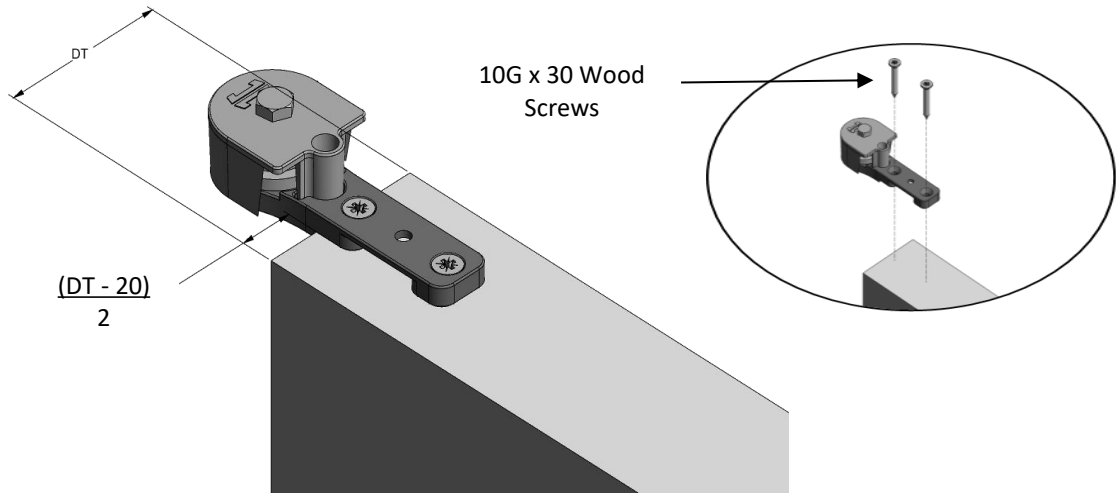
STEP 1: Cut tracks to the required length. Drill holes into each track (hole size depends on fixing method) and use "V" to ensure holes are central. Fix the tracks to the underside of the lintel, see page 2 for recommended track height and clearance.



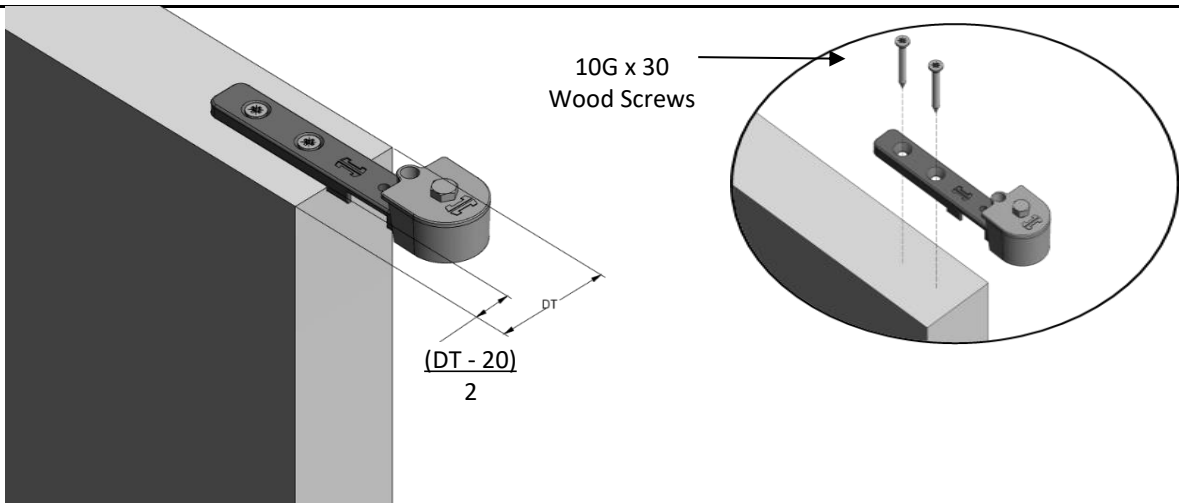
STEP 2: Insert hangers and stops into each track in order shown



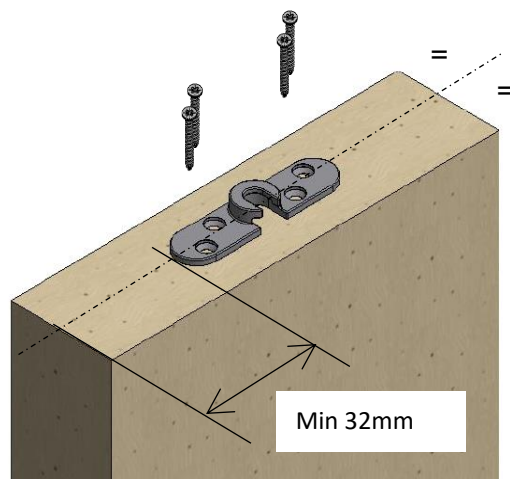
STEP 3: Attach short arm to follower doors.



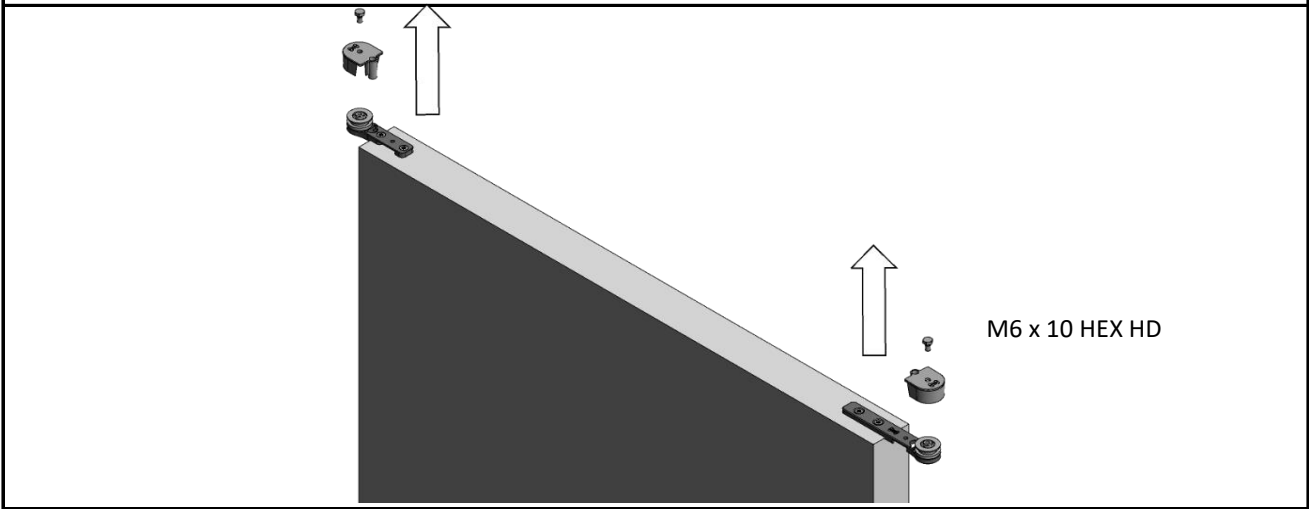
STEP 4: Attach long arm on following doors.



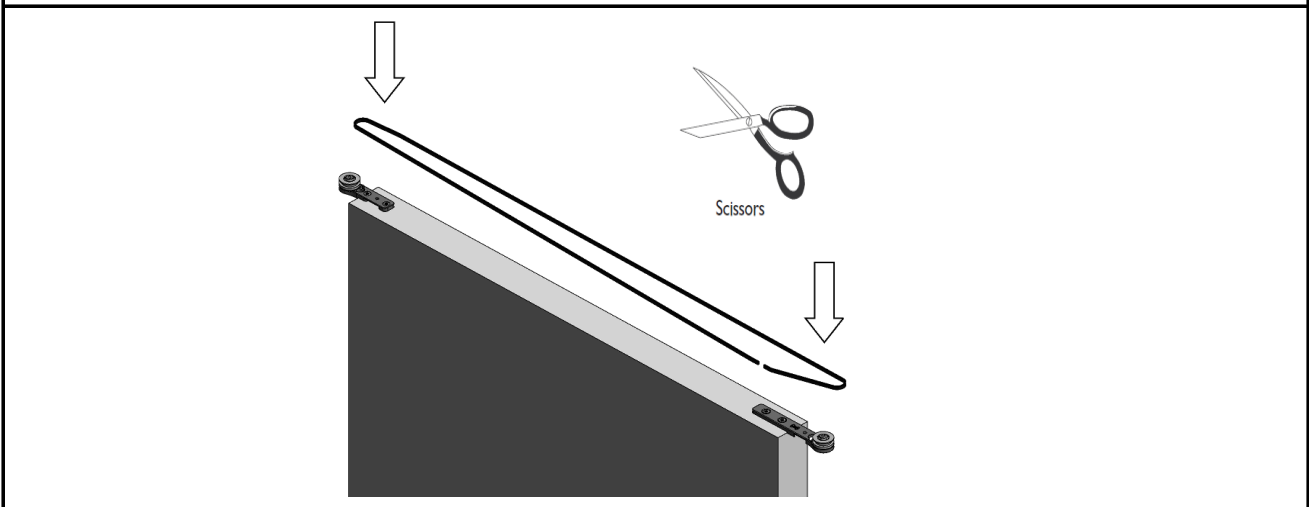
STEP 5: Fit apron plates - 2 per door.



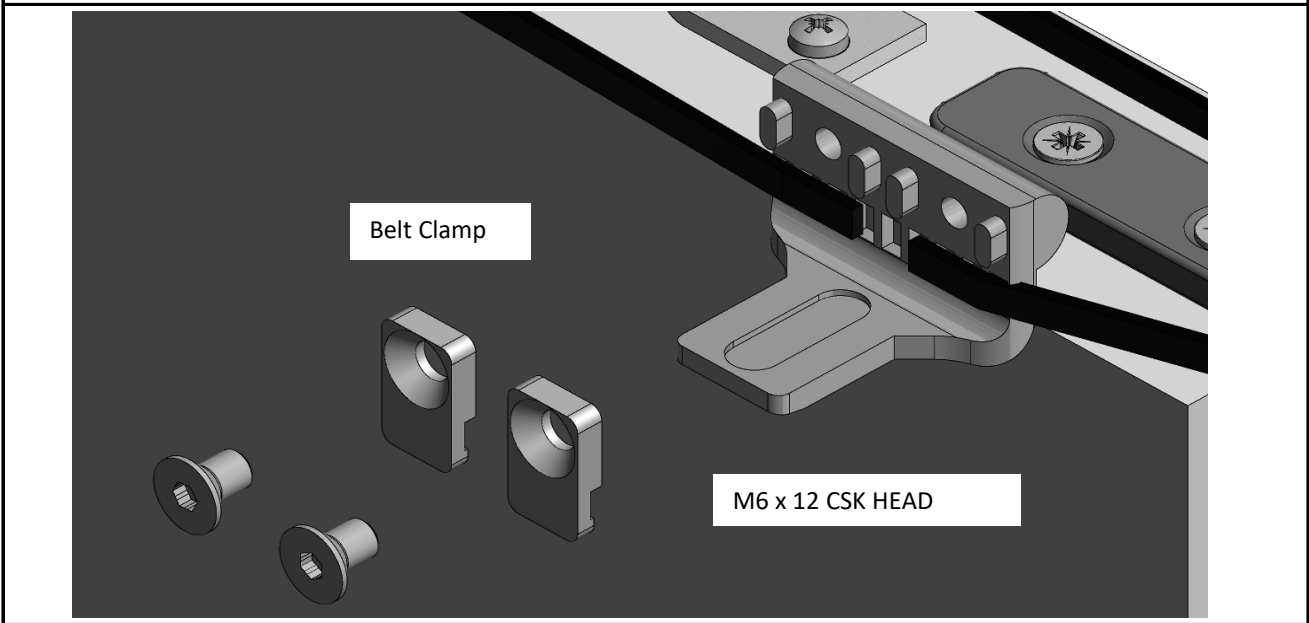
STEP 6: Remove bearing caps on follower doors.



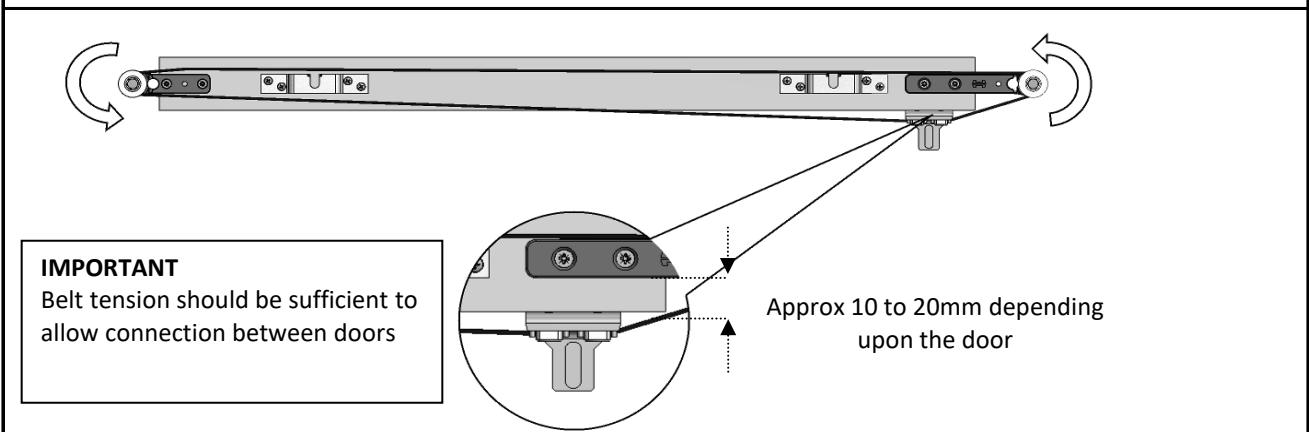
STEP 7: Loop belt around bearing wheels and cut belt to length on follower doors.



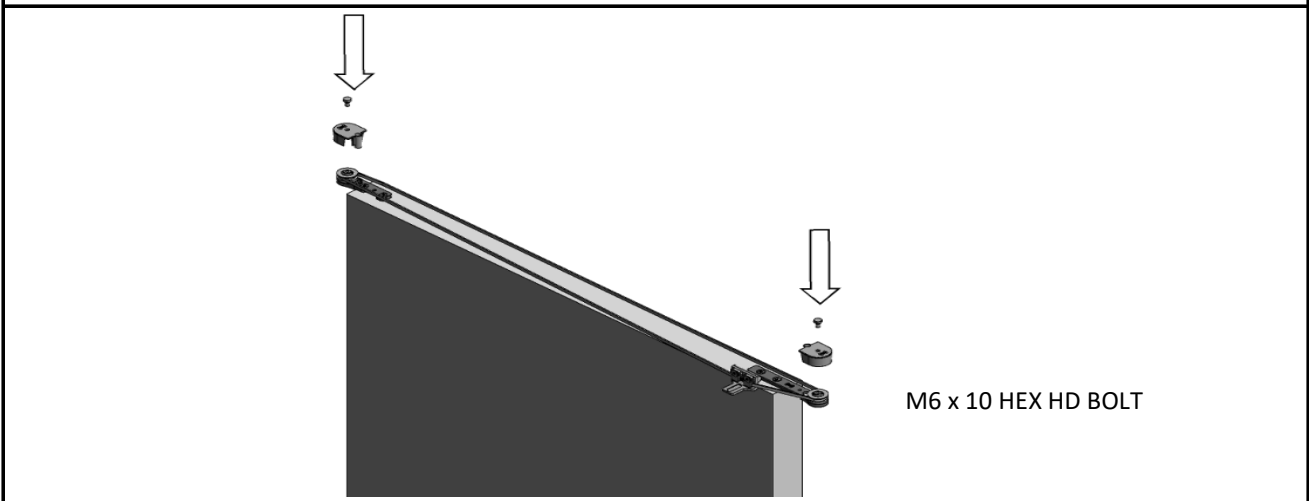
STEP 8: Attach both ends to belt joint bracket on follower doors.



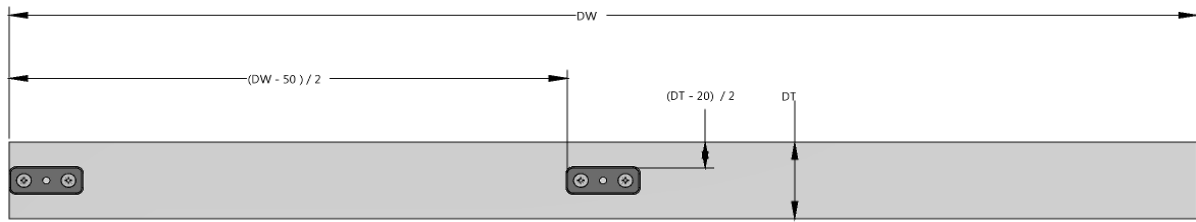
STEP 9: Clamp bracket should be free to traverse between bearings on follower doors.



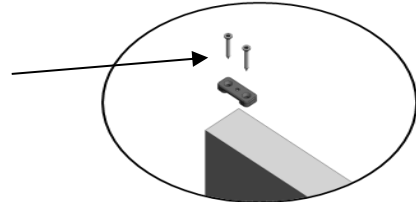
STEP 10: Reattach bearing caps.



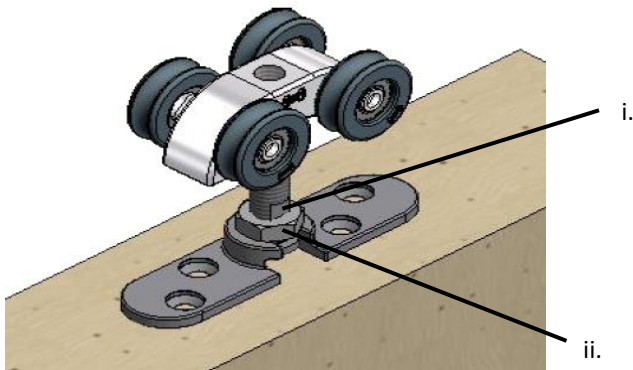
STEP 11: Position retain block on lead doors (LH lead door shown, RH door mirror).



10 x 30 Wood
Screws

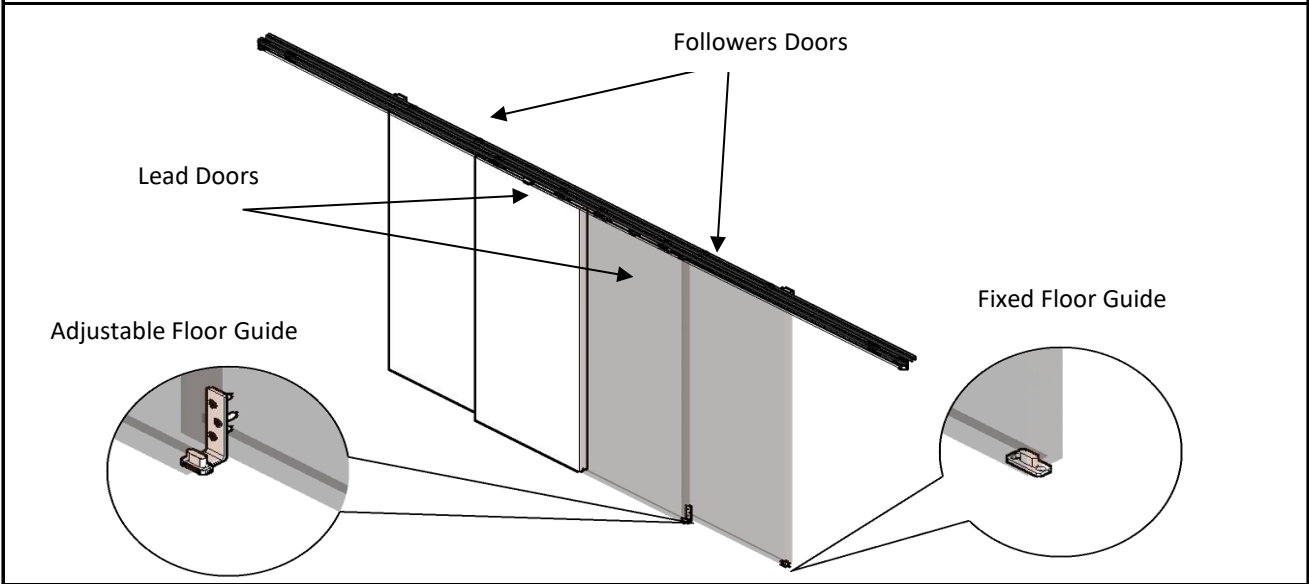


STEP 12: Hang the doors onto the track, set the height and tighten into position.

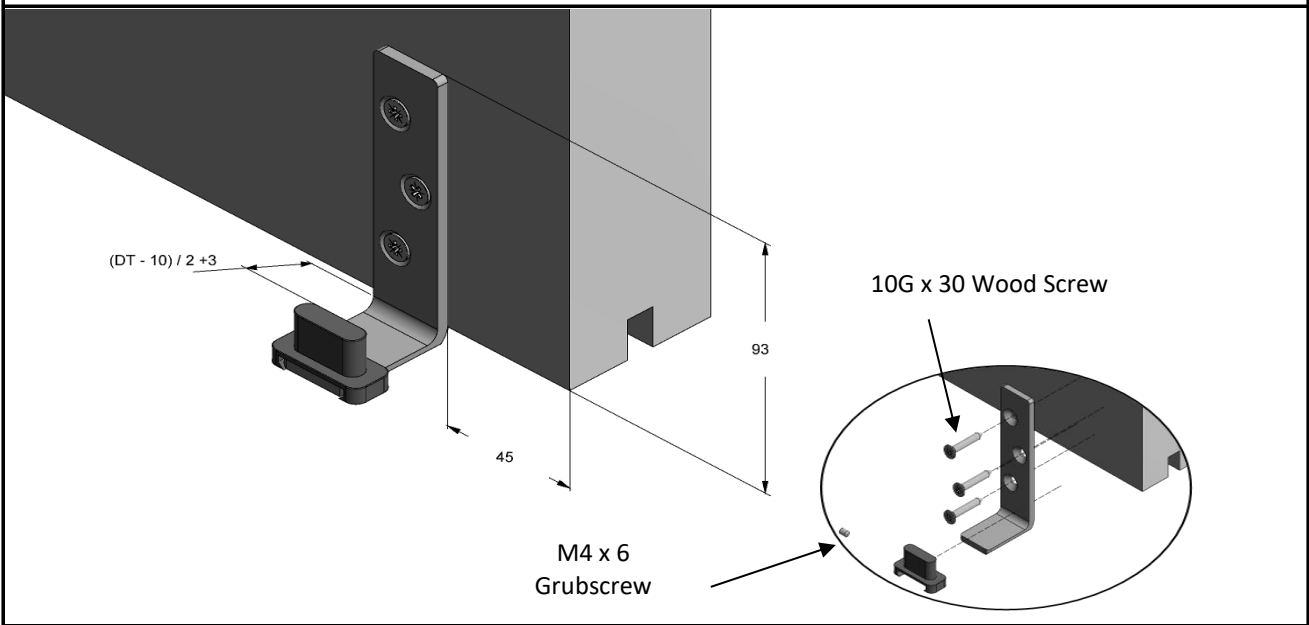


- i. Set door height by rotating strap bolt on flats
- ii. Once position set – tighten thin nut against apron plate

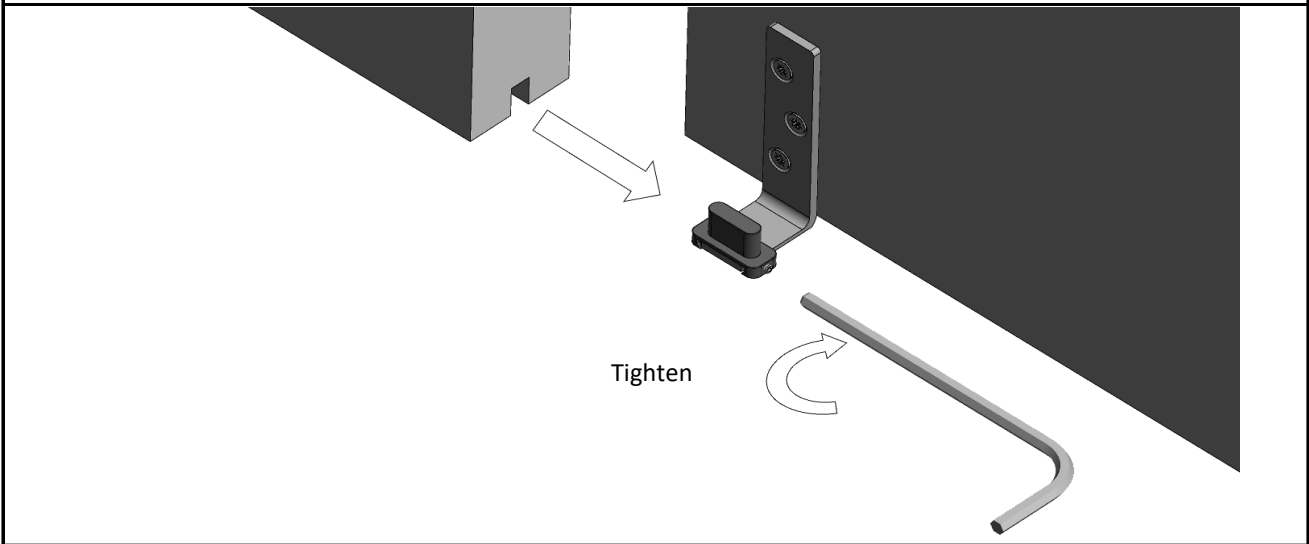
STEP 13: Floor guide overview.



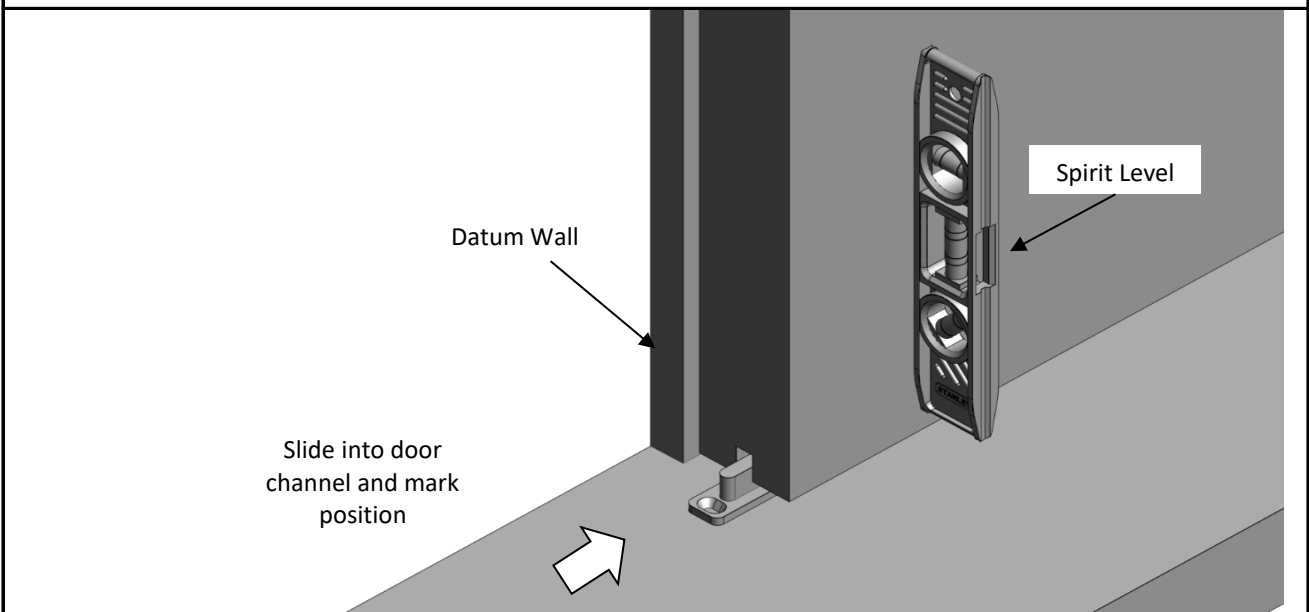
STEP 14: Position adjustable floor guide on face of follower door (LH door shown only).



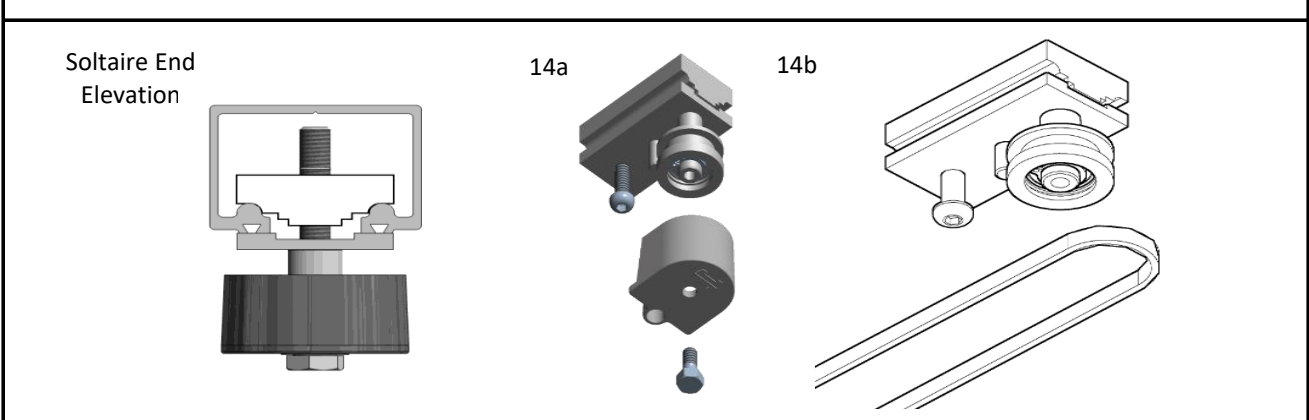
STEP 16: Ensure floor guide is correctly aligned.



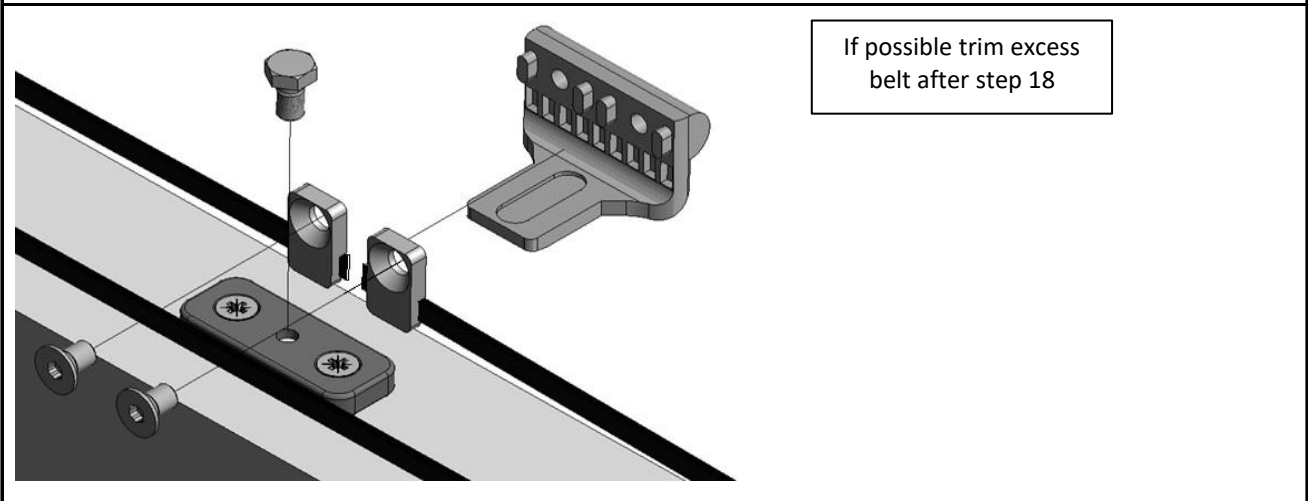
STEP 17: Align doors with spirit level and position fixed floor guides.



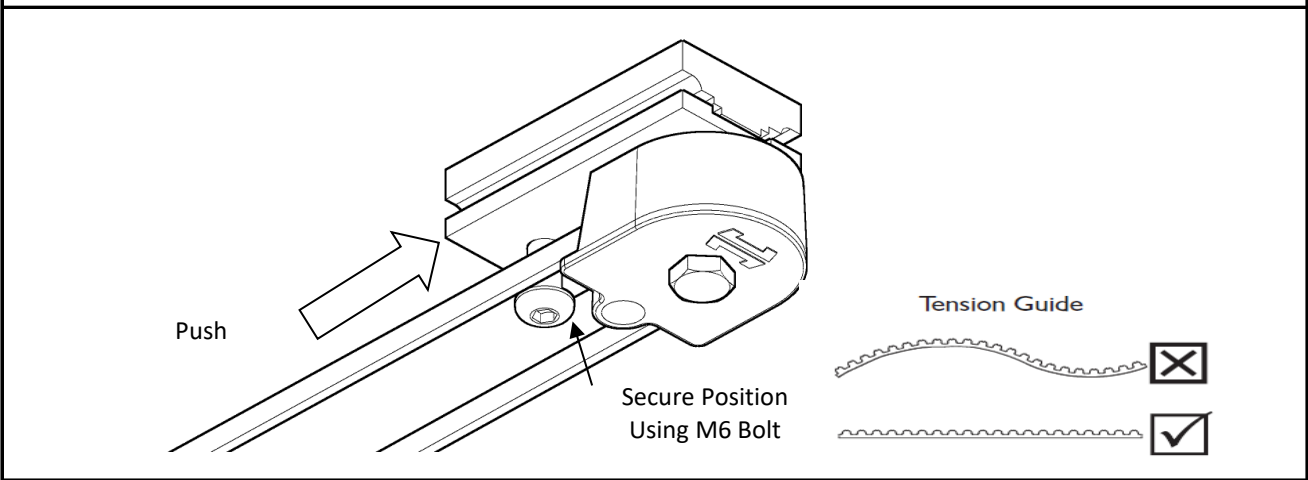
STEP 18: Remove bearing cap from tension wheel assembly and loop belt around bearing wheels



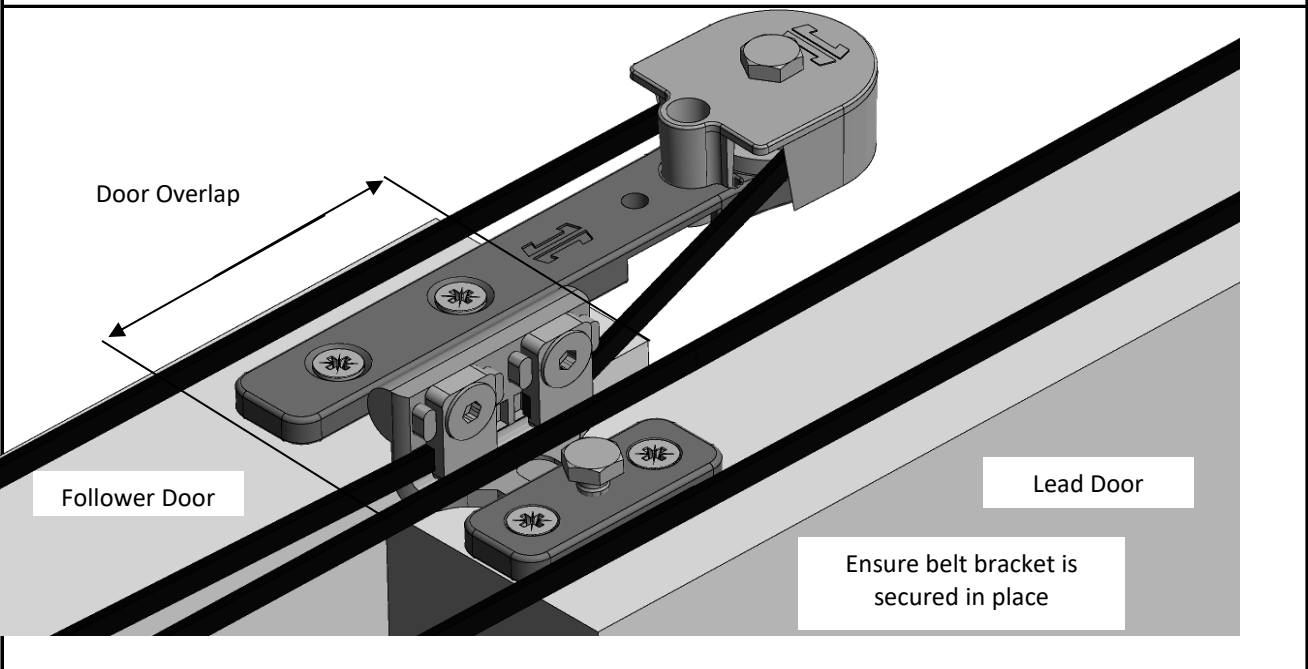
STEP 19: Fit ends of belt to the belt joining plate, and fit to first lead door.



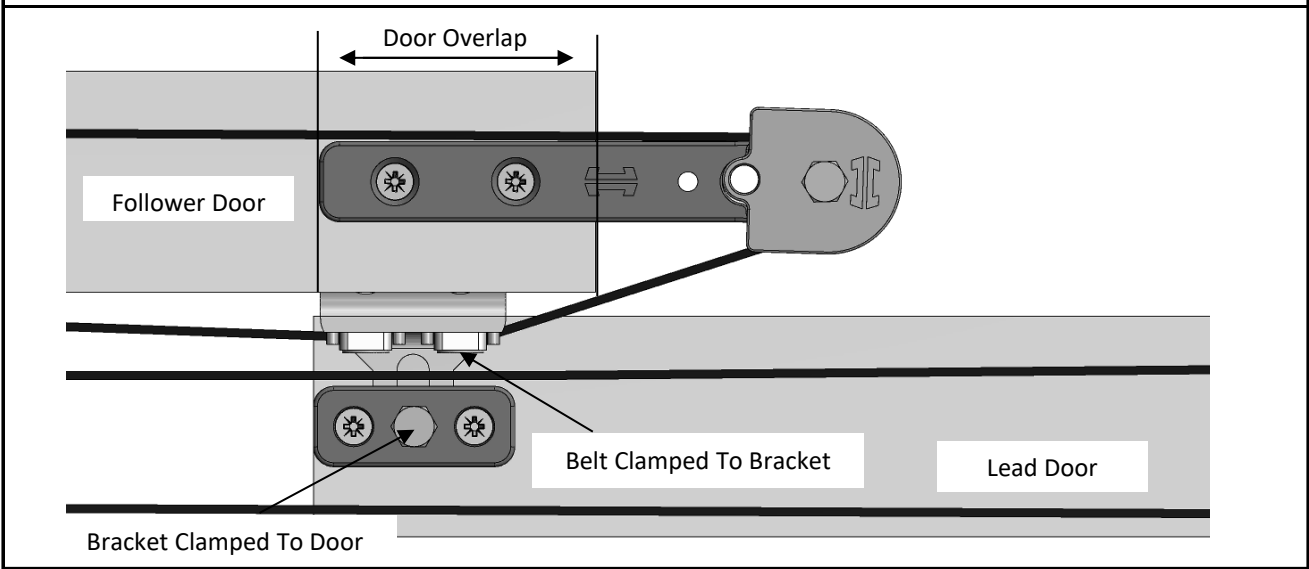
STEP 20: Reattach the bearing cover and apply tension to belt.



STEP 21: With doors in the closed position, connect follower door to lead door.

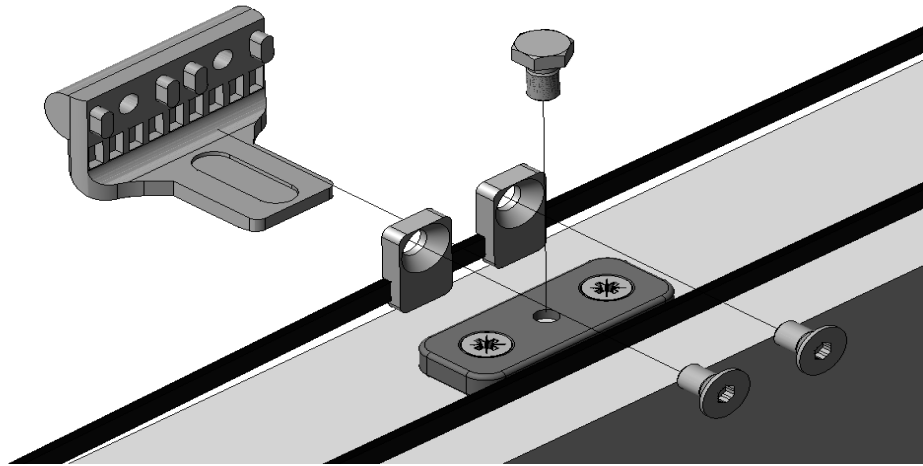


STEP 22: Door belt overview.

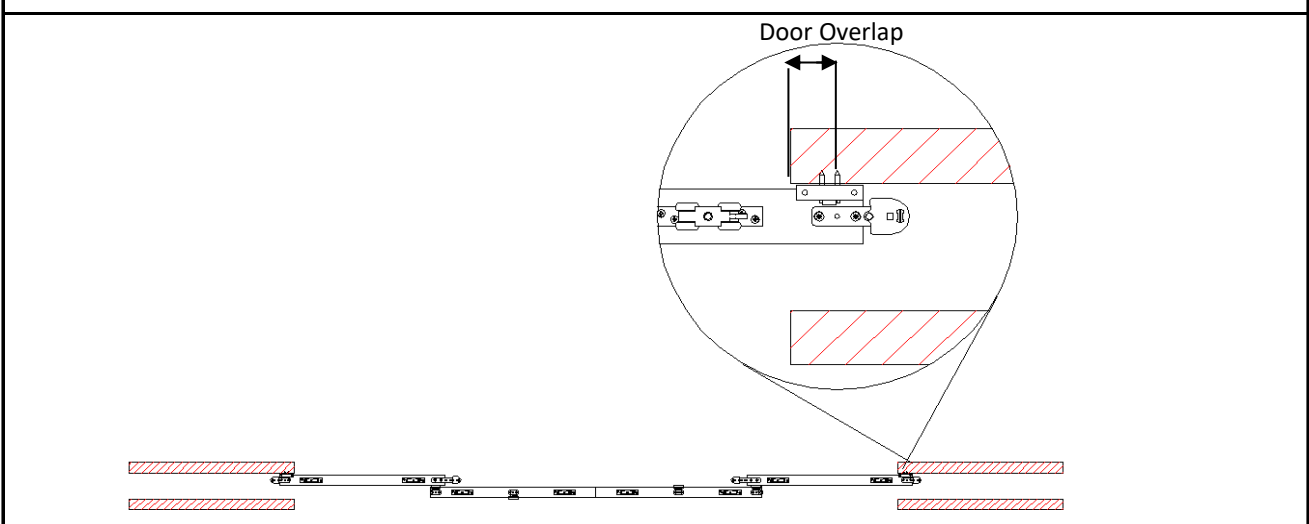


STEP 23: Connect other lead door to the belt (opposite belt to joint).

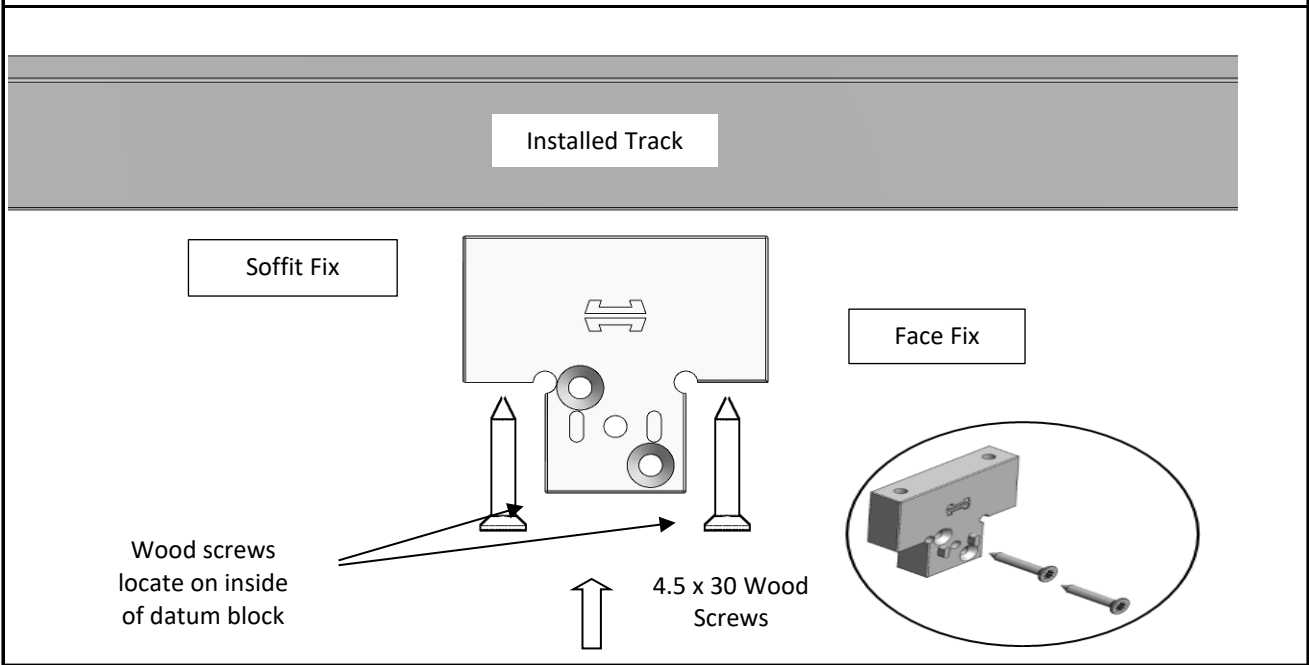
Please ensure doors are in the fully closed position. Do **not** cut the belt



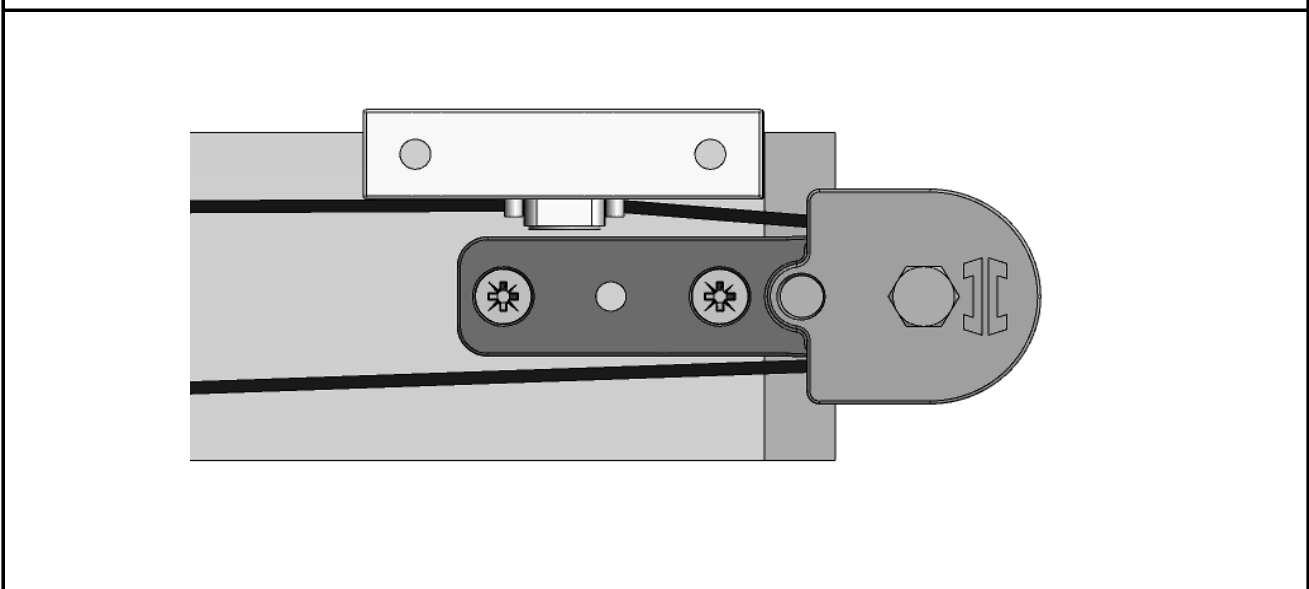
STEP 24: With doors fully closed, mark position for datum block by aligning with edge of follower door.



STEP 25: Affix datum block - ensuring doors are able to fully traverse the track.



STEP 26: Connect belt to datum block.



STEP 27: Position track stops to ensure all panels are aligned in the fully open position.

P C Henderson Ltd, Durham Road, Bowburn, Co. Durham, DH6 5NG, UK

UK Sales

t: +44 (0) 191 377 7345
e: sales@pchenderson.com
w: www.pchenderson.com

Export Sales

t: +44 (0) 191 377 7346
e: international@pchenderson.com
w: export.pchenderson.com

668668
LVL02
Oct-19