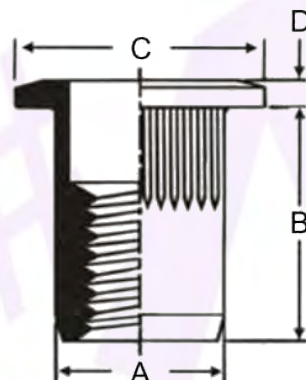


RIVNUT RNLFSDL SERIES

Description	Large Flange, Splined Body
Material	Steel
Finish	Zinc



Dimensions in millimetres.

Part Number	Thread Size	Hole Size +0.1	A +0.05 / -0.15	B ±0.4	C ±0.3 *+0.64	D ±0.1	Grip Range
RNLFSDL04	M4	6.75	6.70	11.45	9.90	0.75	0.5 ~ 2.0
RNLFSDL04L				12.70			2.0 ~ 3.3
RNLFSDL05	M5	7.60	7.50	12.85	10.55	0.75	0.5 ~ 3.3
RNLFSDL05L				15.50			3.3 ~ 5.7
RNLFSDL06	M6	10.00	9.90	15.50	12.70	0.75	0.7 ~ 4.2
RNLFSDL06L				18.00			4.2 ~ 6.6
RNLFSDL08	M8	13.50	13.45	18.40	*17.40	0.90	0.7 ~ 3.8
RNLFSDL08L				21.35			3.8 ~ 7.9
RNLFSDL10	M10	13.50	13.45	18.40	*17.40	0.90	0.7 ~ 3.8
RNLFSDL10L				21.35			3.8 ~ 7.9

PLEASE NOTE – NOT ALL STYLES & SIZES ARE HELD IN STOCK AT ALL TIMES. PLEASE CONTACT US TO CHECK AVAILABILITY. MINIMUM ORDER QUANTITIES APPLY.