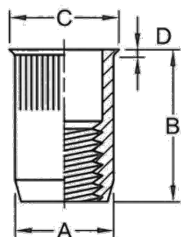


## RIVNUT RNFFSTA4 SERIES



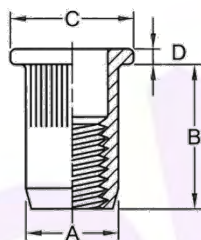
<b>Description</b>	Flush Flange, Splined Body
<b>Material</b>	Stainless Steel – A4
<b>Finish</b>	Plain

Dimensions in millimetres.

Part Number	Thread Size	Hole Size +0.1 / -0	A Max.	B +0.5 / -0	C ±0.3	D +0.3 / -0	Grip Range
RNFFSTA40325	M3	5.0	5.0	9.0	6.0	0.50	0.5 ~ 2.0
RNFFSTA40425	M4	6.0	6.0	11.0	7.0	0.50	0.5 ~ 2.5
RNFFSTA40525	M5	7.0	7.0	12.0	8.0	0.50	0.5 ~ 3.0
RNFFSTA40625	M6	9.0	9.0	14.0	10.0	0.50	0.5 ~ 3.0
RNFFSTA40825	M8	11.0	11.0	16.0	12.0	0.50	0.5 ~ 3.0
RNFFSTA401025	M10	13.0	13.0	19.0	14.2	0.80	1.0 ~ 3.5

**RNFFSTA4 SERIES RIVNUTS ARE AVAILABLE BY SPECIAL ORDER ONLY & MINIMUM ORDER QUANTITIES APPLY**

## RIVNUT RNLFSTA4 SERIES



<b>Description</b>	Large Flange, Splined Body
<b>Material</b>	Stainless Steel – A4
<b>Finish</b>	Plain

Dimensions in millimetres.

Part Number	Thread Size	Hole Size +0.1 / -0	A Max.	B ±0.3	C +0 / -0.5	D ±0.1	Grip Range
RNLFSTA40325	M3	5.0	5.0	9.0	8.0	0.80	0.3 ~ 2.0
RNLFSTA40425	M4	6.0	6.0	11.0	9.0	1.00	0.3 ~ 2.5
RNLFSTA40525	M5	7.0	7.0	12.0	10.0	1.00	0.3 ~ 3.0
RNLFSTA40625	M6	9.0	9.0	14.0	12.0	1.50	0.5 ~ 3.0
RNLFSTA40825	M8	11.0	11.0	16.0	15.0	1.50	0.5 ~ 3.0
RNLFSTA401025	M10	13.0	13.0	19.0	17.0	2.00	1.0 ~ 3.5

**RNLFSTA4 SERIES RIVNUTS ARE AVAILABLE BY SPECIAL ORDER ONLY & MINIMUM ORDER QUANTITIES APPLY**