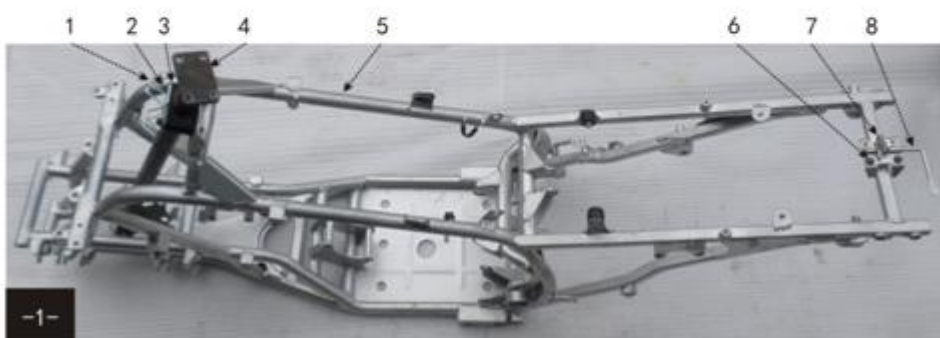


Tornado 250 Sports ATV Vehicle Parts Catalogue

车架、方向柱

- | | |
|------------------|-------------------|
| 1. 线夹 | 5. 车架 |
| 2. 方向柱与车架紧固螺栓2件 | 6. 座垫锁挂钩与车架紧固螺栓2件 |
| 3. 方向柱与车架固定卡子、卡座 | 7. 座垫锁挂钩压簧 |
| 4. 方向柱 | 8. 座垫锁挂钩 |

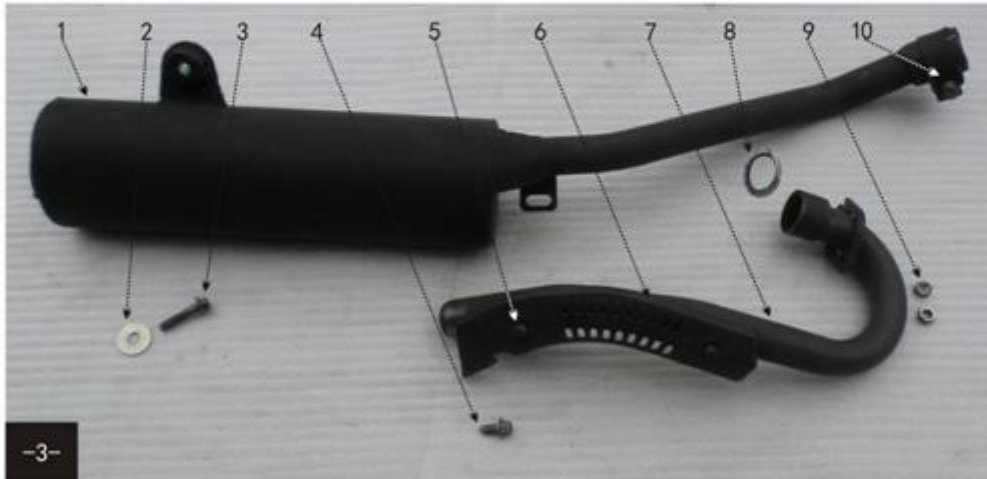


Frame, steering stem

1. Wire clamp
2. Bolt (connects steering stem and frame) x2pcs
3. Clip and clip holder(fixes steering and frame)
4. Steering stem
5. Frame
6. Bolt (seat lock hook and frame) x2pcs
7. Spring, seat lock hook
8. Seat lock hook

消声器总成

- | | | | |
|---------------------|---------------------|--------------------|-----------------------|
| 1. 消声器后段 | 4. 消声器与车架
连接紧固螺栓 | 与消声器前段连接
紧固螺钉2件 | 7. 消声器前段 |
| 2. 平垫圈 | 5. 消声器
防烫护板 | 6. 消声器防烫护板 | 8. 消声器垫圈 |
| 3. 消声器与车架
连接紧固螺栓 | | | 9. 消声器与发动连
接紧固螺母2件 |
| | | | 10. 前后段连接抱箍 |



Muffler

1. Rear part, muffler
2. Plate washer
3. Bolt, connects muffler and frame
4. Bolt, connects muffler and frame
5. Screws (connects muffler cover and front part of muffler) x2pcs
6. Muffler cover
7. Front part, muffler
8. Washer, muffler
9. Nut (connects muffler and engine) x2pcs
10. Connecting clamp(muffler front and rear part)

右前轮 组件

1. 右前轮毂
2. 右前轮胎
3. 右前轮与制动器
连接紧固螺母4件



-5-

Right front wheel assy

1. Right front wheel hub
2. Right front wheel tire
3. Nut (connects right front wheel and brake) x4pcs



Left front wheel assy

1. Left front wheel hub
2. Left front wheel tire
3. Nut (connects left front wheel and brake) x4pcs



左后轮 组件

1. 左后轮毂
2. 左后轮胎
3. 左后轮与后桥连接
紧固螺母4件

-6-

Left rear wheel assy

1. Left rear wheel hub
2. Left rear tire
3. Nut (connects left rear wheel and rear axle) x4pcs

右后轮 组件

1. 右后轮毂
2. 右后轮胎
3. 右后轮与后桥连接
紧固螺母4件



-7-

Right rear wheel assy

1. Right rear wheel hub
2. Right rear wheel tire
3. Nut (connects right rear wheel and rear axle) x4pcs



前左右减震器 后减震器

1. 前左、右减震器
2. 后减震器
3. 紧固螺母6件
4. 前左右减震器与制动器连接紧固螺栓2件
5. 前左右减震器与车架连接紧固螺栓2件
6. 后减震器与后桥平叉连接紧固螺栓
7. 后减震器与车架连接紧固螺栓

-8-

Shock

1. Front shocks
2. Rear shock
3. Nut x6pcs
4. Bolt (connects front shocks and front brake) x2pcs
5. Bolt (connects front shocks and frame) x2pcs
6. Bolt (connects rear shock and rear axle fork)
7. Bolt (connects rear shock and frame)

链条，左右脚蹬，变档臂

1. 链条

2. 左右脚蹬与车架连接紧固螺栓4件

3. 左右脚蹬

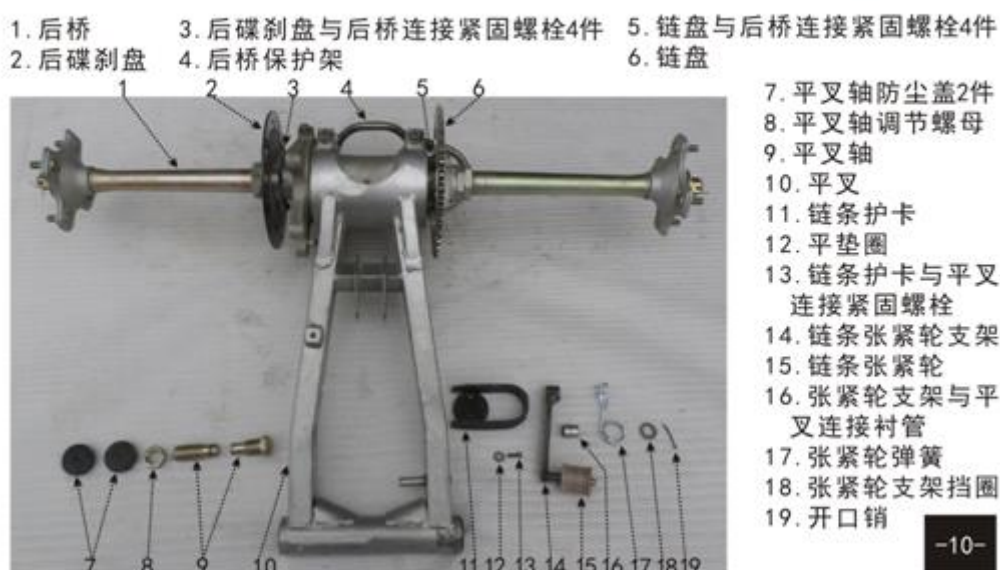
4. 变档臂



Chain, footrests, gearshift lever

1. Chain
2. Bolt(connects footrests and frame) x4pcs
3. Footrests
4. Gearshift lever

后桥，平叉，链盘，后碟刹盘



Rear axle, Fork, Sprocket, Rear brake disc

1. Rear axle
2. Rear brake disc
3. Bolt (connects rear brake disc and rear axle) x4pcs
4. Protective bracket, rear axle
5. Bolt (connects sprocket and rear axle) x4pcs
6. Sprocket
7. Dustproof cap, fork axle (x2pcs)
8. Adjust nut, fork axle
9. Fork axle
10. Fork
11. Guard, chain
12. Plate washer
13. Bolt (connects chain guard and fork)
14. Bracket, chain tension roller
15. Chain tension roller
16. Tubem tension roller bracket and fork
17. Spring, tension roller
18. Lock ring, tension roller bracket
19. Cotter pin

油箱

1. 油箱盖
2. 油箱与车架连接
紧固螺栓4件
3. “工”字胶4件
4. 油开关
5. 油箱

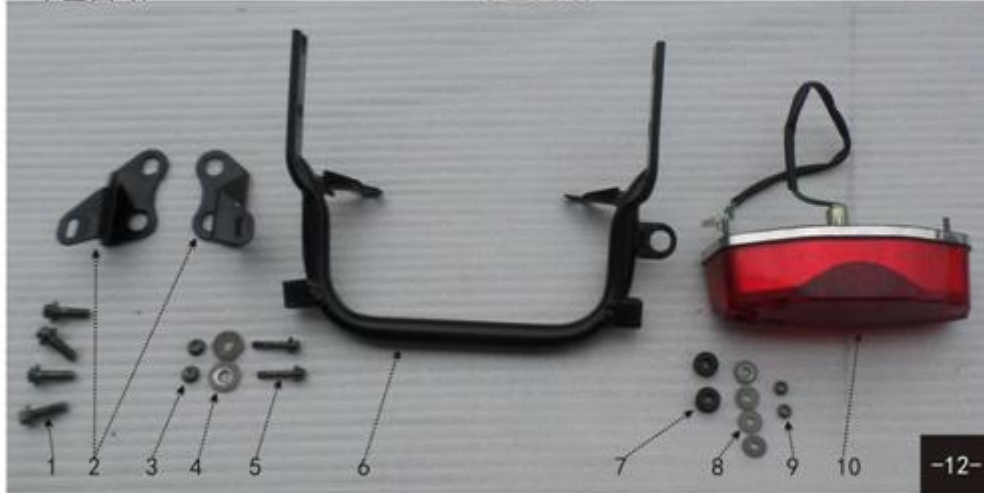


Gas tank

1. Gas tank cap
2. Bolt (connects gas tank and frame) x4pcs
3. Rubber x4pcs
4. Fuel cock
5. Gas tank

车架后段、尾灯

- | | | |
|--------------------|-------------------|----------------|
| 1. 车架后段与车架连接紧固螺栓4件 | 5. 支架与覆盖件支架连接螺栓2件 | 9. 尾灯与车架连接螺母2件 |
| 2. 车架覆盖件与车架连接支架2件 | 6. 车架后段 | 10. 尾灯 |
| 3. 紧固螺母2件 | 7. 尾灯与车架连接“工”字胶2件 | |
| 4. 平垫圈2件 | 8. 平垫圈4件 | |



Frame rear part, taillight

1. Bolt (connects frame rear part and frame) x4pcs
2. Bracket(connects body plastic cover and frame) x2pcs
3. Nut x2pcs
4. Plate washer x2pcs
5. Bolt (connects bracket and body plastic cover bracket) x2pcs
6. Frame rear part
7. Rubber parts (connects taillight and frame)x2pcs
8. Plate washer x4pcs
9. Nut (connects taillight and frame)x2pcs
10. Tail light

后车体覆盖件

1. 后车体覆盖件
2. 后车体与后车体连接块
3. 连接块与后车体连接紧固螺钉2件，螺母2件

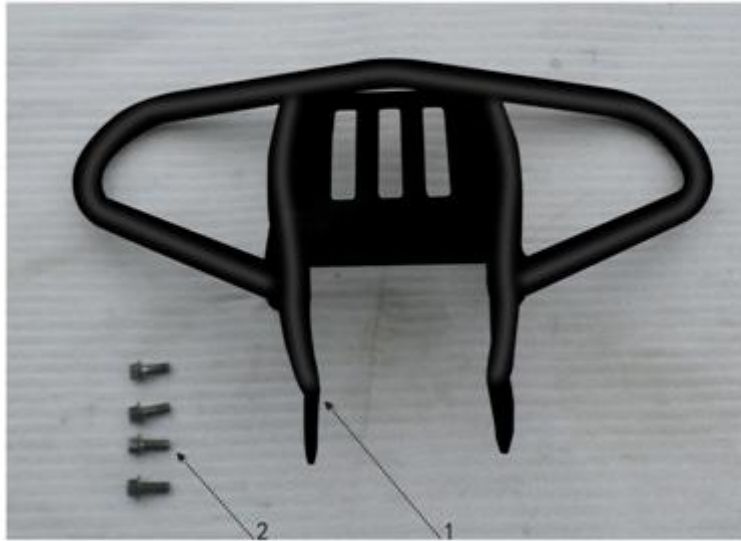


-13-

Rear body plastic cover

1. Rear body plastic cover
2. Connecting block(rear body plastic cover)
3. Screw and nuts (connecting block and rear body plastic cover) x2pcs

前保险杠



1. 前保险杠
2. 前保险杠与车架
连接紧固螺栓4件

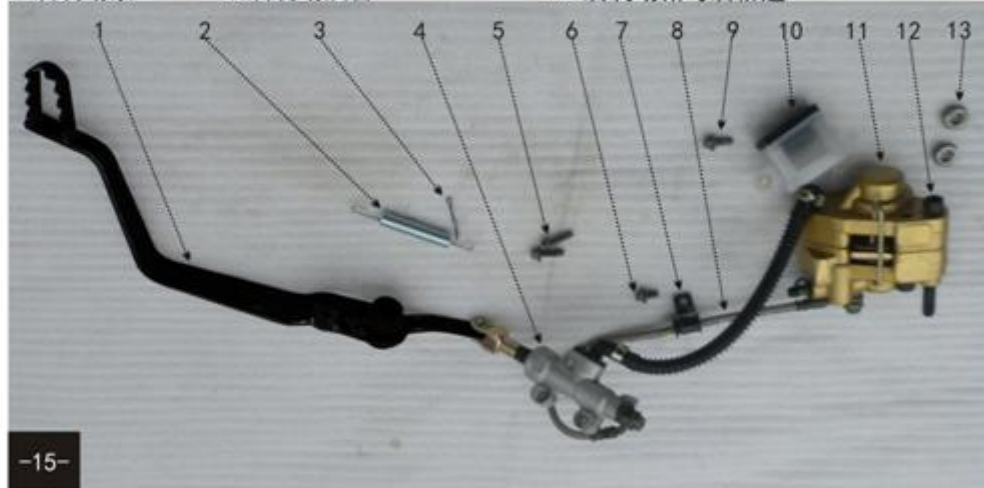
-14-

Front bumper

1. Front bumper
2. Bolt (connects front bumper and frame) x4pcs

后制动总成组件

- | | | | |
|------------|-----------------|--------------|------------|
| 1. 后制动踏板 | 5. 制动泵与车架连接螺栓2件 | 9. 油杯与车架连接螺栓 | 接螺栓2件 |
| 2. 后制动回位弹簧 | 6. 油管与平叉连接螺栓 | 10. 后制动油杯 | 13. 紧固螺母2件 |
| 3. 开口销 | 7. 油管与平叉连接支架 | 11. 后制动钳 | |
| 4. 后制动泵 | 8. 后制动油管 | 12. 后制动钳与后桥连 | |



Rear brake assy

1. Rear brake pedal
2. Rear brake spring
3. Cotter pin
4. Rear brake pump
5. Bolt (connects brake pump and frame) x2pcs
6. Bolt (connects brake oil pipe and fork)
7. Bracket (connects brake oil pipe and fork)
8. Rear brake oil pipe
9. Connecting bolt (oil cup and frame)
10. Oil cup, rear brake
11. Rear brake caliper
12. Bolt (rear brake caliper and rear axle) x2pcs
13. Nut x2pcs

化油器、空滤器、进气管

1. 空滤器 2. 空滤器与化油器连接抱箍 3. 化油器 4. 化油器与进气管连接螺母2件
5. 进气管 6. 进气管与发动连接螺栓2件



Carburetor, Air cleaner, Air intake

1. Air cleaner
2. Clamp, air cleaner and carburetor
3. Carburetor
4. Nut (x2), carburetor and air intake
5. Air intake
6. Bolt (x2), air intake and engine

前大灯、前面罩

1. 前面罩与油箱护板
连接螺钉2件
2. 平垫圈2件
3. 胶平垫2件
4. 紧固螺母2件
5. 前面罩
6. 前大灯
7. 螺母夹2件
8. 前面罩与支架连接
螺钉2件
9. 前面罩与车架连接
支架2件
10. 支架与车架连接紧
固螺栓2件



-17-

Headlight and cover

1. Screw(x2), headlight cover and gas tank protective plate
2. Plate washer x2
3. Rubber plate washer x2
4. Nut x2
5. Headlight cover
6. Headlight
7. Nut clamp x2
8. Screw(x2), headlight cover and bracket
9. Screw(x2), headlight cover and frame bracket
10. Bolt(x2), bracket and frame

前制动总成

1. 前碟刹泵与车架连接紧固螺栓2件
2. 前碟刹泵
3. 前左右碟刹钳与摇架连接紧固螺栓4件



4. 前左右碟刹钳
5. 碟刹油管
6. 碟刹油杯
7. 碟刹手柄与手把管连接卡子
8. 碟刹手柄与手把管连接紧固螺栓2件
9. 前碟刹手柄

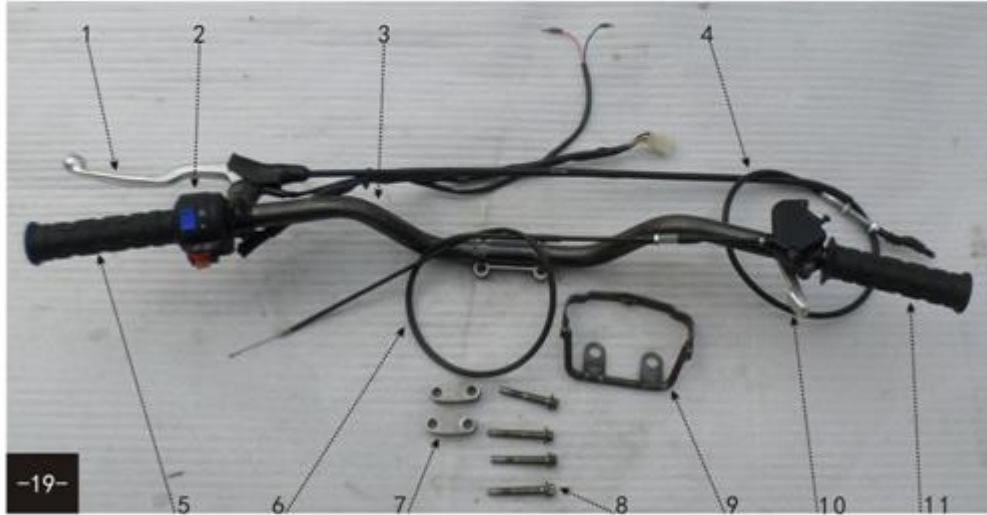
-18-

Front brake comp

1. Bolt(x2), front disc brake pump and frame
2. Front disc pump
3. Bolt(x4), front disc brake calipers and swing arm
4. Front disc brake calipers
5. Front disc brake oil pipe
6. Front disc brake oil cup
7. Clip, connects brake handle lever and handle bar
8. Bolt (x2), brake handle lever and handle bar
9. Front disc brake handle lever

手把管总成

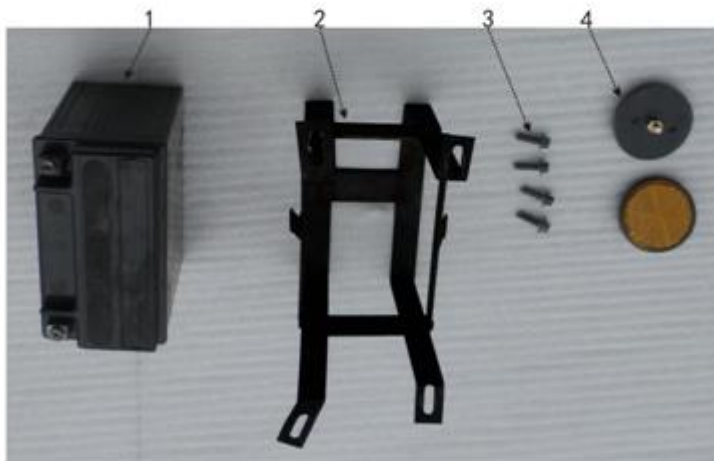
1. 离合手柄 3. 手把管 5. 左手把胶 7. 手把管与方向柱连接卡子2件 9. 档显罩支架
2. 闸把 4. 离合拉索 6. 油门拉索 8. 手把管与方向柱连接紧固螺栓4件 10. 加油器
11. 右手把胶



Handle bar

1. Clutch handle lever
2. Handle bar switch
3. Handle bar
4. Clutch cable
5. Left handle bar grip
6. Throttle cable
7. Clip (x2), handle bar and steering stem
8. Bolt (x4), handle bar and steering stem
9. N +R indicator cover bracket
10. Accelerator
11. Right handle bar grip

蓄电池、电瓶支架、侧光片

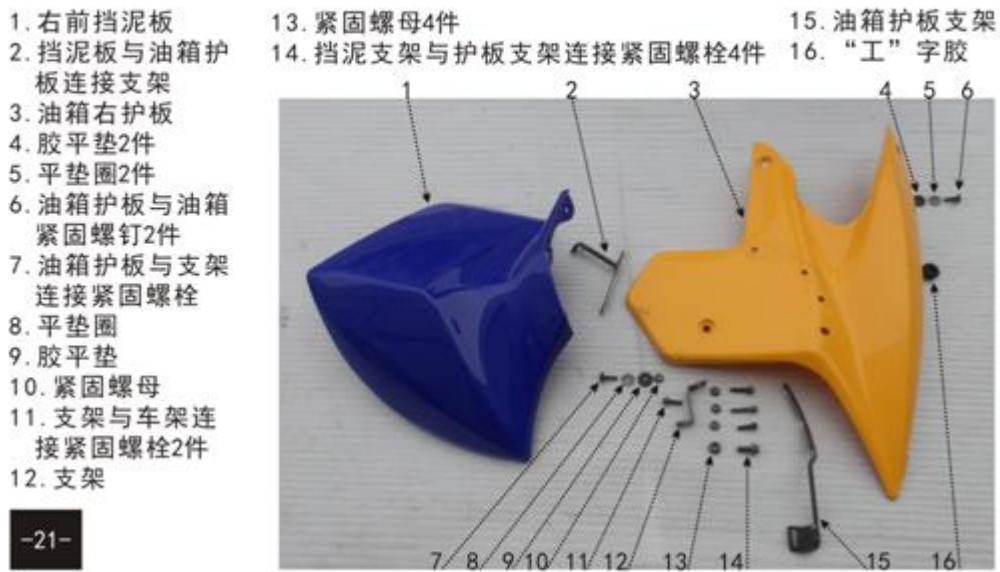


1. 蓄电池
2. 电瓶支架
3. 电瓶支架与车架
连接紧固螺栓4件
4. 侧光片2件

-20-

1. Battery
2. Battery bracket
3. Bolt (x4), battery bracket and frame
4. Reflector x2

油箱右护板、右前挡泥板



Gas tank right cover, Right front fender

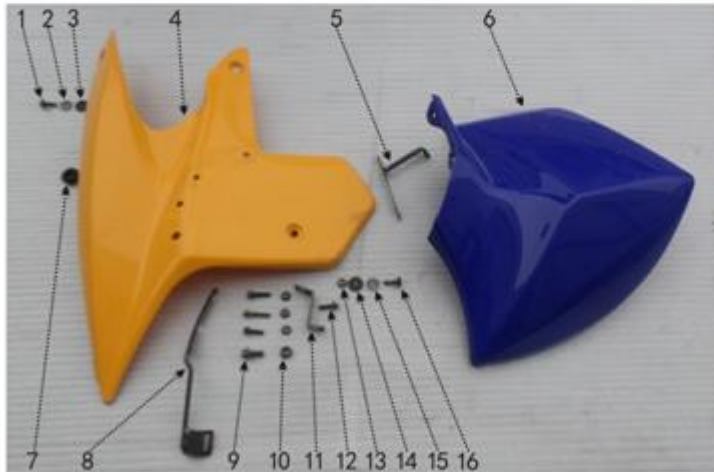
1. Right front fender
2. Bracket, front fender and gas tank cover
3. Gas tank right cover
4. Rubber plate washer x2pcs
5. Plate washer x2pcs
6. Screw (x2) , gas tank cover and gas tank
7. Bolt, gas tank cover and bracket
8. Plate washer
9. Rubber plate washer
10. Nut
11. Bolt (x2), bracket and frame
12. Bracket
13. Nut x4pcs
14. Bolt(x4), fender bracket and protective plate bracket
15. Gas tank cover bracket
16. Rubber

油箱左护板、左前挡泥板

1. 油箱护板与油箱
连接螺钉2件
2. 平垫圈2件

3. 胶平垫2件
4. 油箱左护板
5. 护板与挡泥板连接支架

6. 左前挡泥板
7. “工”字胶
8. 护板与车架连接支架
9. 护板与挡泥板连接紧
固螺栓4件
10. 紧固螺母4件
11. 护板与车架连接支
架
12. 支架与车架连接紧
固螺栓2件
13. 紧固螺母
14. 胶平垫
15. 平垫圈
16. 护板与支架连接紧
固螺栓



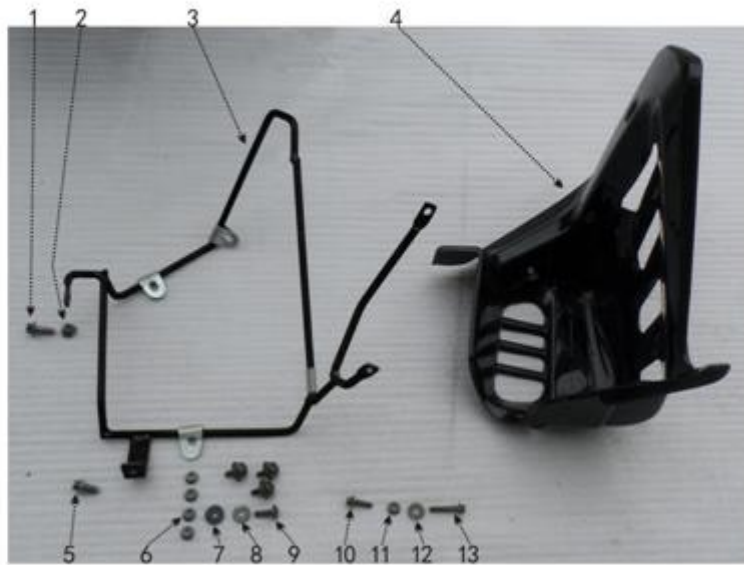
-22-

Gas tank left cover, Left front fender

1. Screw(x2), gas tank cover and gas tank
2. Plate washer x2 pcs
3. Rubber plate washer x2pcs
4. Left protective cover, gas tank
5. Bracket, protective plate and front left fender
6. Left front fender
7. Rubber
8. Bracket, protective plate and frame
9. Bolt(x4), protective plate and front left fender
10. Nut x4pcs
11. Bracket, protective plate and frame
12. Bolt(x2), frame and bracket
13. Nut
14. rubber washer
15. Plate rubber ring
16. Bolt, protective plate and bracket

右搁脚、搁脚支架

1. 搁脚支架与搁脚
紧固螺栓
2. 紧固螺母
3. 搁脚支架
4. 右搁脚
5. 支架与车架连接
紧固螺栓
6. 紧固螺母4件
7. 胶平垫4件
8. 平垫圈4件
9. 搁脚与支架连接
紧固螺栓4件
10. 支架与车架连接
螺栓
11. 紧固螺母
12. 平垫圈
13. 支架与车架连
接螺栓

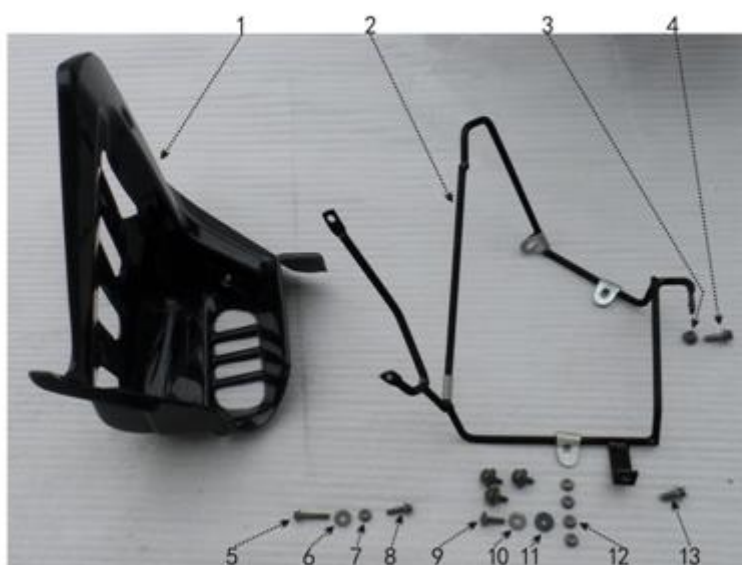


-23-

Right footrest and bracket

1. Bolt, footrest bracket and footrest
2. Nut
3. Footrest bracket
4. Right footrest
5. Bolt, bracket and frame
6. Nut x4pcs
7. Rubber plate washer x4pcs
8. Plate washer x4pcs
9. Bolt(x4), footrest and bracket
10. Bolt, bracket and frame
11. Nut
12. Plate washer
13. Bolt, bracket and frame

左搁脚、搁脚支架



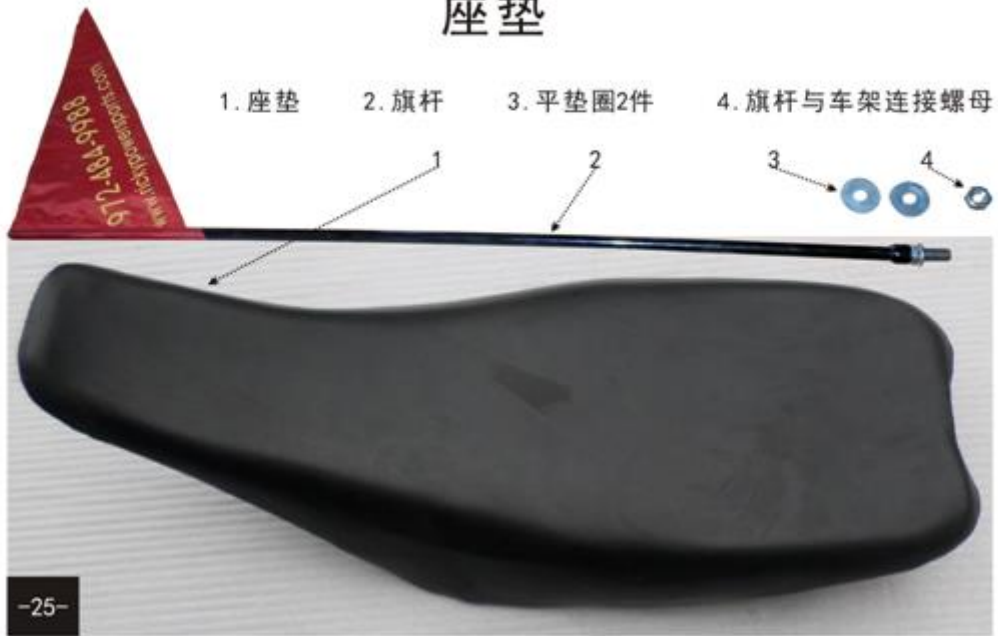
1. 左搁脚
2. 搁脚支架
3. 紧固螺母
4. 搁脚支架与搁脚
紧固螺栓
5. 支架与车架连
接螺栓
6. 平垫圈
7. 紧固螺母
8. 支架与车架连接
螺栓
9. 搁脚与支架连接
紧固螺栓4件
10. 平垫圈4件
11. 胶平垫4件
12. 紧固螺母4件
13. 支架与车架连接
紧固螺栓

-24-

Left footrest and bracket

1. Left footrest
2. Footrest bracket
3. Nut
4. Bolt, footrest bracket and footrest
5. Bolt, footrest bracket and frame
6. Plate washer
7. Nut
8. Bolt, footrest bracket and frame
9. Bolt x4, footrest and bracket
10. Plate washer x4pcs
11. Rubber washer x4pcs
12. Nut x4pcs
13. Bolt, bracket and frame

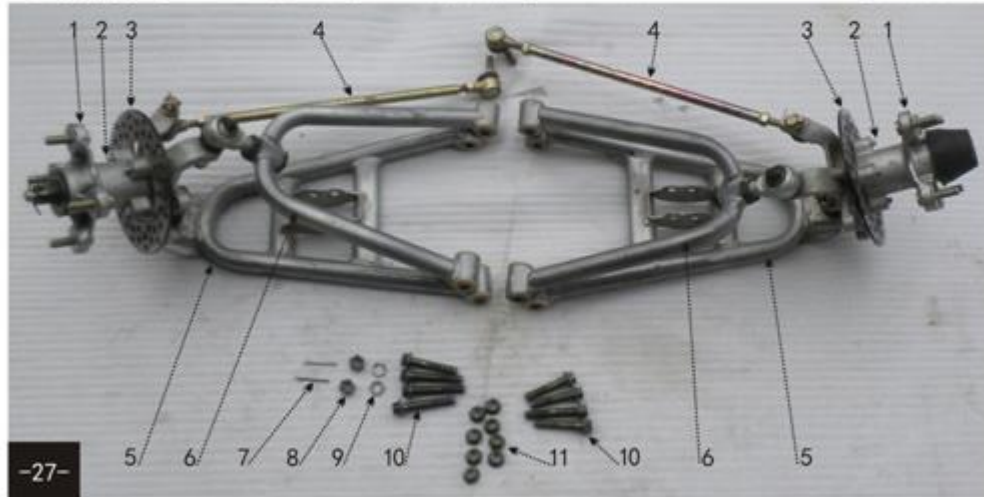
座垫



Seat
Seat

左右摇架总成

- | | | | |
|----------------------|-----------|----------|-----------------------|
| 1. 左右旋转体 | | | 9. 弹簧垫圈2件 |
| 2. 碟刹盘与旋转体
连接螺栓8件 | 4. 左右转向拉杆 | 6. 左右上摇臂 | 8. 转向拉杆与方向柱
连接螺母2件 |
| 3. 左右碟刹盘 | 5. 左右下摇臂 | 7. 开口销2件 | 11. 紧固螺母8件 |

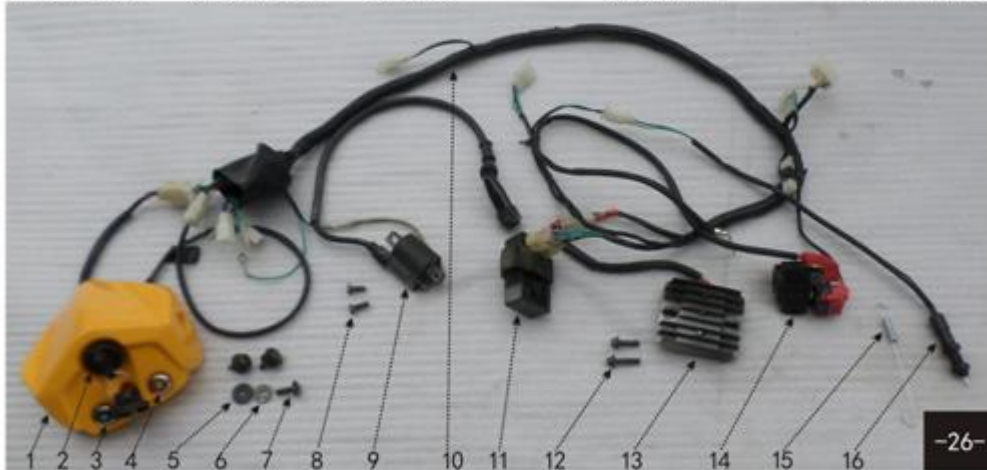


Left and right swing arm comp

1. Left and right wheel hub
2. Bolt(x8), disc brake and wheel hub
3. Left and right brake discs
4. Left and right steering rods
5. Left and right lower swing arm
6. Left and right upper swing arm
7. Cotter pin x2
8. Nut(x2), steering rods and steering stem
9. Spring washer x2
10. Bolt(x8), swing arms and frame
11. Nut x8pcs

主线、电器件

- | | | | | |
|---------|-----------|------------|------------|-----------|
| 1. 档显罩 | 5. 胶平垫3件 | 8. 点火线圈与车架 | 11. 点火器 | 14. 继电器 |
| 2. 点火开关 | 6. 平垫圈3件 | 连接螺栓2件 | 12. 调压器与车架 | 15. 后制动开关 |
| 3. 空档显示 | 7. 档显罩与支架 | 9. 点火线圈 | 连接螺栓2件 | 回位弹簧 |
| 4. 倒档显示 | 连接螺栓3件 | 10. 主线 | 13. 调压器 | 16. 后制动开关 |



Wire harness and electric parts

1. N/R indicator cover
2. Engine starting switch
3. N indicator
4. R indicator
5. Rubber plate washer x3
6. plate washer x3
7. Bolt x3, N/R indicator and bracket
8. Bolt x2, ignition coil and frame
9. Ignition coil
10. Wire harness
11. CDI
12. Bolt x2, regulator and frame
13. Regulator
14. Starting relay
15. Spring, rear brake switch
16. Rear brake switch