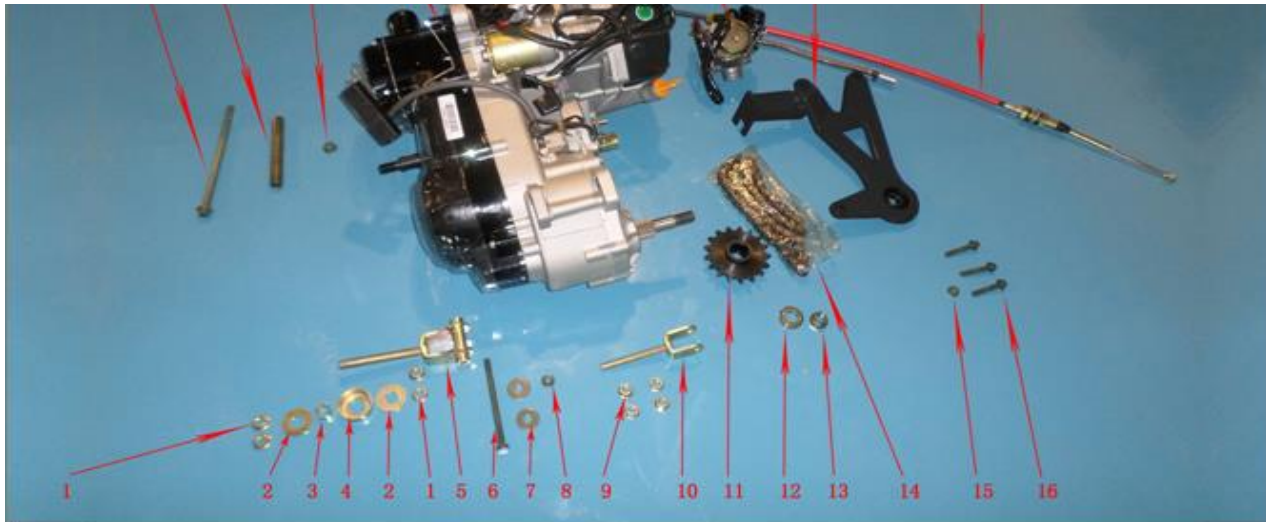


# Transformer 200 Go-Kart Parts Catalogue



车架 Frame





No	Chinese	Description	Standard	Specification	Qty
1	螺母	Nut	GB/T6187	M12x1.25	4pcs
2	垫圈	Washer		Φ12.5xΦ34.5x5	2pcs
3	衬管	Tube		Φ18xΦ12x12	1pcs
4	减震垫挡座	Retaining washer, shock		Φ41xΦ20x11x1.5	1pcs
5	发动机调节器	Adjustor, engine			1pcs
6	螺栓	Bolt	GB/T5787	M8x95	1pcs
7	垫圈	Washer	GB/T96	8	2pcs
8	螺母	Nut	GB/T6187	M8	1pcs
9	螺母	Nut	GB/T6187	M10x1.25	4pcs
10	发动机输出轴调节器	Output shaft adjustor, engine			1pcs
11	主动链轮	Driving sprocket		530/17 teeth, spline 24teeth	1pcs
12	平垫圈	Flat washer	GB/T96	16	1pcs
13	螺母	Nut	GB/T6187	M16x1.5	1pcs
14	链条	Chain		530, 48 knots	1pcs
15	螺母	Nut	GB/T6187	M8	3pcs
16	螺栓	Bolt	GB/T5787	M8x40, 45, 50	3pcs
17	螺栓	Bolt	GB/T5787	M10x1.25x190	1pcs
18	衬管	Tube		φ12×φ16×123	1pcs
19	螺母	Nut	GB/T6187	M10	1pcs
20	发动机	Engine comp		180CC, GY6	1pcs
21	化油器	Carburetor		PD24J	1pcs
22	输出轴支架	Bracket, output shaft			1pcs
23	倒档拉索	Reverse gear cable			1pcs

后桥上摇架 Upper swing arm, rear axle







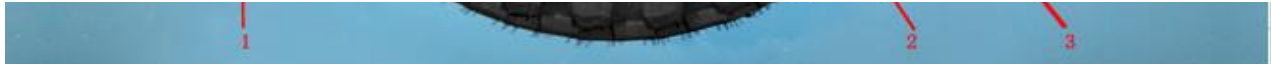




No	Chinese	Description	Standard	Specification	Qty
1	螺栓	Bolt	GB/T1667.4	M8×40	6pcs
2	螺母	Nut	GB/T6187.1	M8	6pcs
3	螺栓	Bolt	GB/T1667.4	M8×25	4pcs
4	螺母	Nut	GB/T6187.1	M8	4pcs
5	螺母	Nut	GB/T6187.1	M8	4pcs
6	螺栓	Bolt	GB/T1667.4	M8×20	4pcs
7	防护帽衬圈	Washer		M16	2pcs
8	大平垫圈	Big flat washer	GB/T97.1	Φ16×Φ50	2pcs
9	开槽螺母	Slotted nut	GB/T6178	M16×1.5	2pcs
10	开口销	Cotter pin	GB/T91	3×36	2pcs
11	轮毂连接座	Rear wheel hub			2pcs
12	轴承座	Bearing base			2pcs
13	后桥轴	Rear axle			1pcs
14	链盘	Sprocket		Φ58×Φ163×8×31 teeth	1pcs
15	后碟刹盘	Rear brake disc		Φ58×Φ220×4	1pcs

左前轮 Front wheel, left





No	Chinese	Description	Standard	Specification	Qty
1	螺母	Nut	GB/T6177	M10	4pcs
2	左前轮毂	Front wheel rim,left		MT5.5-10	1pcs
3	左前轮胎	Front tire,left		21×7-10	1pcs

右前轮 Front wheel,right



No	Chinese	Description	Standard	Specification	Qty
----	---------	-------------	----------	---------------	-----

1	右前轮胎	Front tire,right		21×7-10	1pcs
2	右前轮毂	Front rim,right		MT5.5-10	1pcs
3	螺母	Nut	GB/T6177	M10	4pcs

左后轮 Rear wheel. left



No	Chinese	Description	Standard	Specification	Qty
1	左后轮胎	Rear tire,left		22×11-10	1pcs
2	左后轮毂	Rear rim,left		MT8-10	1pcs
3	螺母	Nut	GB/T6177	M10	4pcs




右后轮 Rear wheel,right



No	Chinese	Description	Standard	Specification	Qty
1	螺母	Nut	GB/T6177	M10	4 pcs
2	右后轮毂	Rear wheel rim,right		MT8-10	1pcs
3	右后轮胎	Rear tire,right		22×11-10	1pcs


消声器总成 Muffler



No	Chinese	Description	Standard	Specification	Qty
1	螺母	Nut	GB/T6177	M8	2pcs
2	消声器	Muffler			1pcs
3	螺栓	Bolt	GB/T1667.4	M14x1.5	1pcs
4	二次补气装置	EPA emission control valve			1pcs
5	纸垫	Paper washer			1pcs
6	螺栓	Bolt	GB/T1667.4	M6x12	2 pcs
7	防烫板	Protect plate			1pcs
8	螺钉	Screw	GB/T818	M6x8	2 pcs







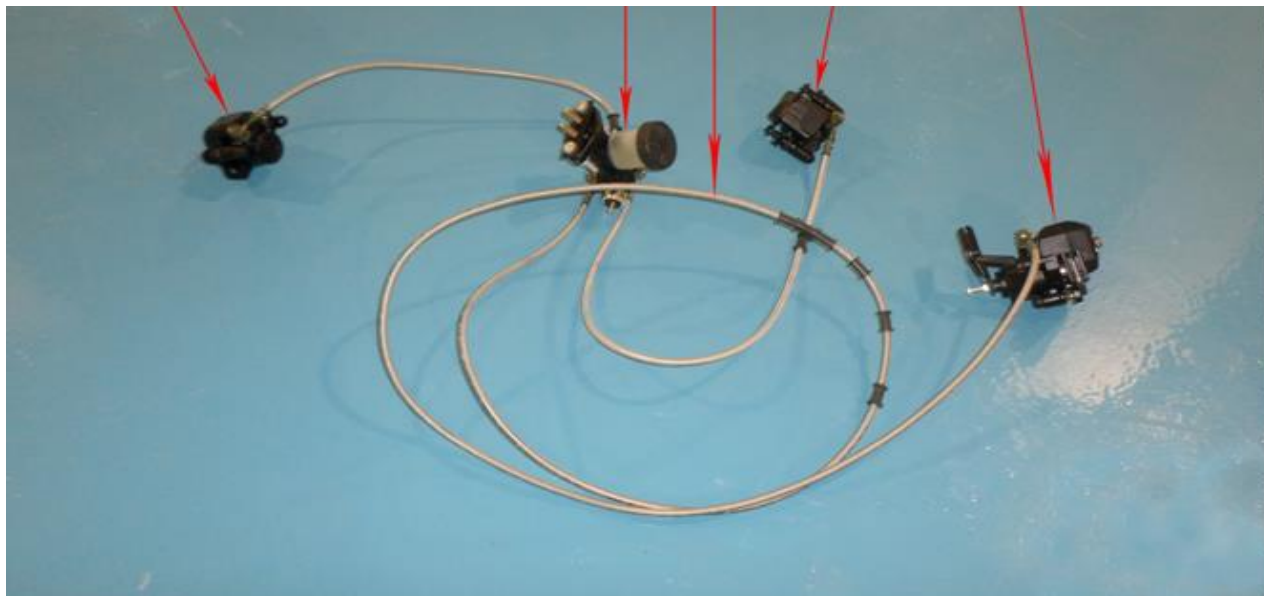










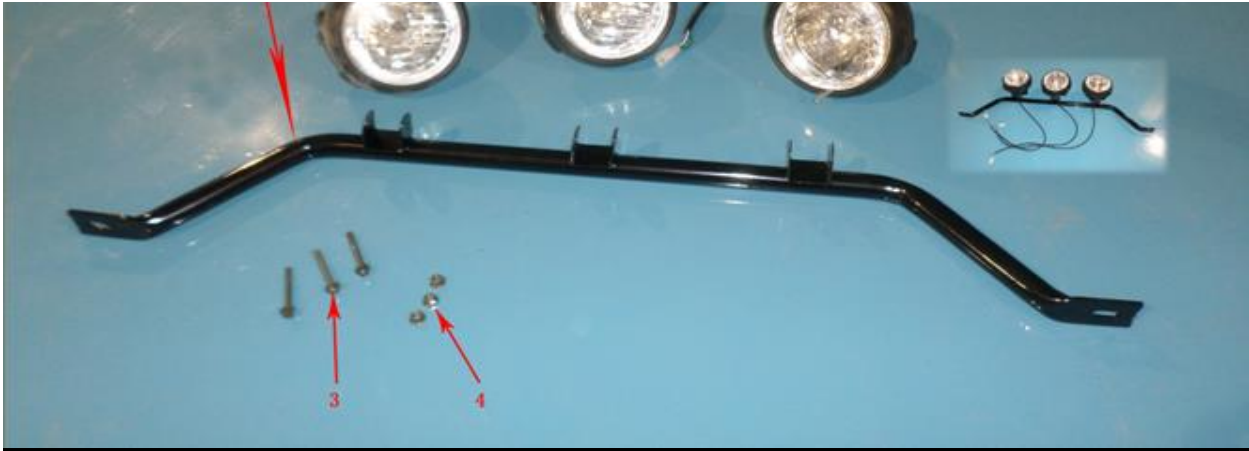


No	Chinese	Description	Standard	Specification	Qty
1	前左碟刹钳	Left disc brake caliper, front			1pcs
2	碟刹总泵组合	Main pump assy			1pcs
3	碟刹油管	Disc brake oil pipe			3pcs
4	前右碟刹钳	Right disc brake caliper, front			1pcs
5	后碟刹钳组合	disc brake caliper, rear			1pcs

顶大灯、支架 Top head light and bracket







No	Chinese	Description	Standard	Specification	Qty
1	顶大灯支架	Bracket,top headlight			1pcs
2	顶大灯	Top headlight			3pcs
3	螺栓	Bolt	GB/T1667.4	M6x50	3pcs
4	螺母	Nut	GB/T6177	M6	3pcs

二次补气倾倒阀 Dumping valve,EPA emission control









No	Chinese	Description	Standard	Specification	Qty
1	螺栓	Bolt	GB/T1667.4	M8x60	5pcs
2	棚杆安装卡垫	Washer,bar installation		$\phi 22 \times \phi 8 \times 6$	5pcs
3	棚杆安装套	Rubber,bar		Inner diameter $\Phi 32$	5pcs
4	后棚杆	Rear bar		$\Phi 32$	1pcs
5	前棚杆	Front bar		$\Phi 32$	2pcs
6	中棚杆	Middle bar		$\Phi 32$	1pcs
7	螺栓	Bolt	GB/T1667.4	M8x60	6pcs
8	棚杆安装卡垫	Washer,bar installation		$\phi 22 \times \phi 8 \times 6$	12pcs
9	螺母	Nut	GB/T6177	M8	6pcs

副驾驶扶手 Hand rest,passenger



No	Chinese	Description	Standard	Specification	Qty
1	副驾驶扶手右胶套	Right rubber sleeve,hand rest			1pcs
2	副驾驶扶手	Hand rest			1pcs



3	副驾驶扶手左胶套	Left rubber sleeve,hand rest			1pcs
4	扶手安装卡座	Circlip,hand rest installation			1pcs
5	螺栓	Bolt	GB/T16674.1	M8x50	2pcs
6	扶手安装卡子	Circlip,hand rest installation			1pcs
7	扶手下胶套	Rubber sleeve,hand rest			1pcs

仪表总成 Dash



No	Chinese	Description	Standard	Specification	Qty
1	档显指示	Gear indicator			1pcs
2	喇叭按钮	Horn button			1pcs
3	转向按钮	Turn light button			1pcs
4	点火开关	Ignition switch			1pcs
5	灯光按钮	Light button			1pcs

6	远近变光按钮	High/low beam button			1pcs
7	应急开关按钮	Emergency light button			1pcs
8	十字盘头螺钉	Cross pan head screw	GB/T818	M6x80	2pcs
9	仪表盘衬管	Tube,dash		$\phi 8 \times \phi 12 \times 70$	2pcs
10	仪表盘	Dash			1pcs
11	十字盘头螺钉	Cross pan head screw	GB/T818	M6x16	2pcs

手刹手柄、转向连杆 Hand brake handle,steering rod



No	Chinese	Description	Standard	Specification	Qty
1	手刹手柄	Hand brake handle			1pcs
2	螺栓	Bolt	GB/T16674.1	M8x25	2pcs
3	转向连杆	Steering rod			2pcs
4	弹簧垫圈	Spring washer	GB/T93	$\Phi 12$	2pcs
5	开槽螺母	Slotted nut	GB/T6178	M12	2pcs
6	开口销	Cotter pin	GB/T91	2x25	2pcs







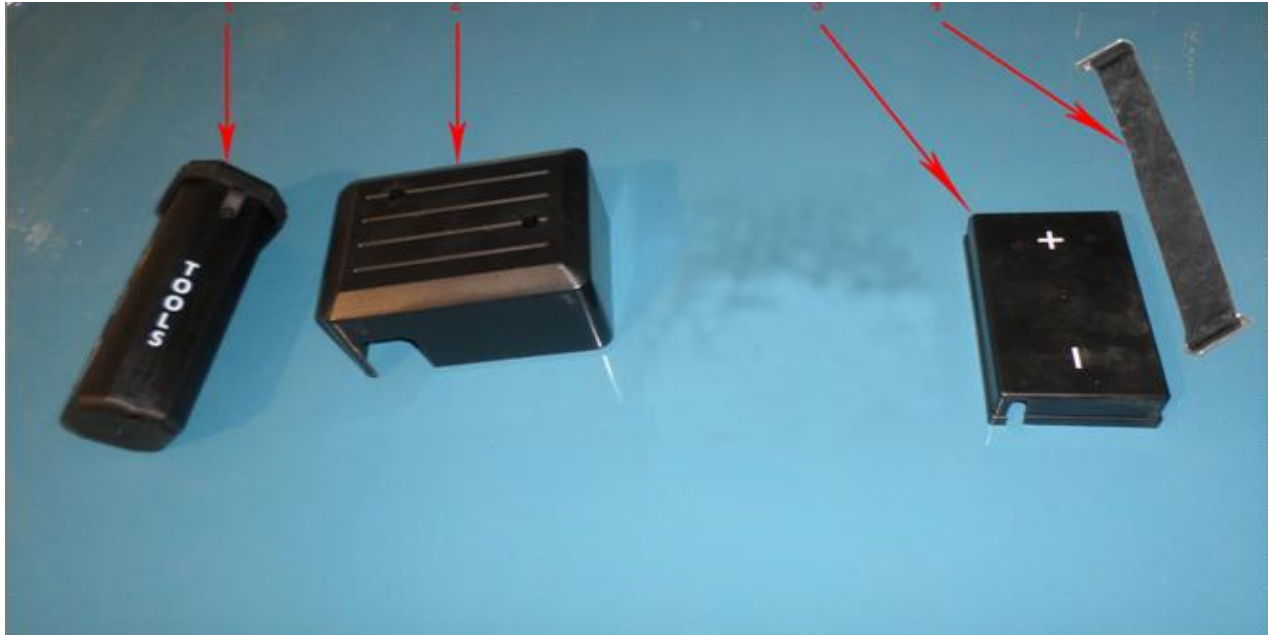












No	Chinese	Description	Standard	Specification	Qty
1	工具箱	Tool box			1pcs
2	电器盒盖	Box cap,all electric parts			1pcs
3	电瓶盒盖	Battery box cap			1pcs
4	电瓶扎带	Battery tie		L=220	1pcs

后视镜 Mirror





No	Chinese	Description	Standard	Specification	Qty
1	右后视镜	Right mirror			1pcs
2	左后视镜	Left mirror			1pcs

座墊 Seat





