

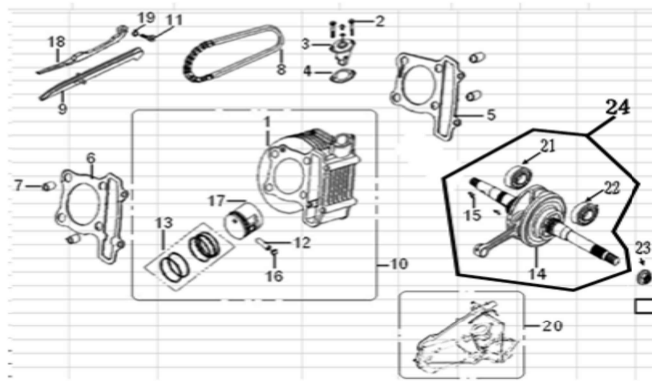
50CC SHORT CASE ENGINE F01



50CC SHORT CASE ENGINE F01

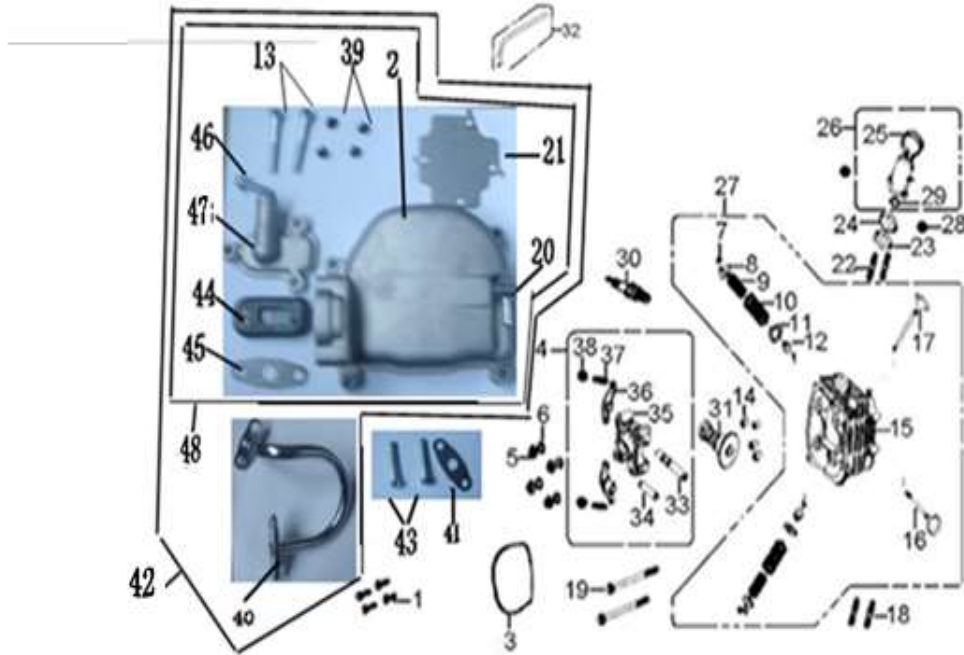
PART #	DESCRIPTION	QTY
SC-50-F01-1	<b>Four-stroke engine 50CC short box</b>	1
SC-50-F01-2	Valve assembly	1

## 50CC SHORT CASE ENGINE F02



PART #	DESCRIPTION	QTY
SC-50-F02-1	Cylinder comp	1
SC-50-F02-2	Bolt M6x18	2
SC-50-F02-3	Chain adjuster assy	1
SC-50-F02-4	Gasket chain adjuster	1
SC-50-F02-5	Cylinder pad of paper	1
SC-50-F02-6	Gasket cylinder head	1
SC-50-F02-7	Bowel pin 8x14	4
SC-50-F02-8	Timing chain	1
SC-50-F02-9	Guide comp chain	1
SC-50-F02-10	Cylinder, piston, piston rings, circlip, piston pin group	1
SC-50-F02-11	Cam chain screw	1
SC-50-F02-12	Piston pin	1
SC-50-F02-13	Piston ring .comp	1
SC-50-F02-14	Crank and connecting rod assembly	1
SC-50-F02-15	Woodruff key	1
SC-50-F02-16	Piston pin clip	2
SC-50-F02-17	Piston	1
SC-50-F02-18	Tension rod chain	1
SC-50-F02-19	O-rling 15.2×1.5	1
SC-50-F02-20	A full set of paper washer	1
SC-50-F02-21	Right crank bearing	1
SC-50-F02-22	Left crank bearing 6204	1
SC-50-F02-23	Nut M12 * 1.25	1
SC-50-F02-24	Crankshaft connecting-rod assy	1

## 50CC SHORT CASE ENGINE F03

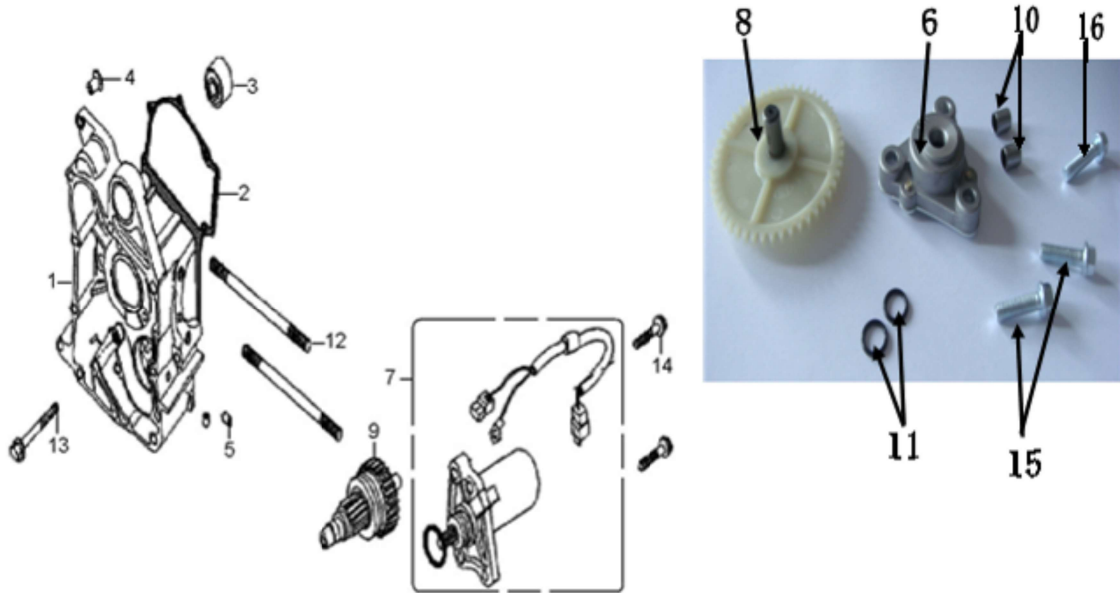


## 50CC SHORT CASE ENGINE F03

PART #	DESCRIPTION	QTY
SC-50-F03-1	Bolt M6×25	4
SC-50-F03-2	Cylinder head cover	1
SC-50-F03-3	O-ring cylinder head	1
SC-50-F03-4	Rocker bracket assembly	1
SC-50-F03-5	Nut flange M7	4
SC-50-F03-6	Washer $\phi 7 \times \phi 14 \times 2$	4
SC-50-F03-7	Valve cone half	4
SC-50-F03-8	Retainer valve spring	2
SC-50-F03-9	Spring valve inner	2
SC-50-F03-10	Spring valve outer	2
SC-50-F03-11	Valve spring washer	2
SC-50-F03-12	Valve seals	2
SC-50-F03-13	Bolt M6x35	2
SC-50-F03-14	Bowel pin 8x14	2
SC-50-F03-15	Cylinder head (50cc)	1
SC-50-F03-16	Valve intake	1
SC-50-F03-17	Exhaust valve	1
SC-50-F03-18	Double end studs M6×32	2
SC-50-F03-19	Bolt M6x85	2
SC-50-F03-20	Tube breather	1
SC-50-F03-21	Pressure plate breather	1
SC-50-F03-22	Double end studs M6×63	2

SC-50-F03-23	O ring insulator carburetor	1	
SC-50-F03-24	Insulator carburetor	1	
SC-50-F03-25	Clip tube assy	1	
SC-50-F03-26	Inlet pipe	1	
SC-50-F03-27	Cylinder head assy	1	
SC-50-F03-28	Unt flange M6	2	
SC-50-F03-29	O ring inlet pipe	1	
SC-50-F03-30	"NGK"Spark plug (withR)	1	
SC-50-F03-31	Camshaft group	1	
SC-50-F03-32	Air tube	1	
SC-50-F03-33	Intake valve rocker shaft	1	
SC-50-F03-34	Exhaust valve rocker shaft	1	
SC-50-F03-35	Holder camshaft	1	
SC-50-F03-36	Rocker arm inner	2	
SC-50-F03-37	Screw tappet adjusting	2	
SC-50-F03-38	Nut tappet adjusting	2	
SC-50-F03-39	Screw st4×8-c-h	4	
SC-50-F03-40	Aerate syphon	1	
SC-50-F03-41	Qi port cylinder head gasket graphite	1	
SC-50-F03-42	Cylinder head cover assembly	1	
SC-50-F03-43	Bolt M6x18	2	
SC-50-F03-44	One-way reed valve	1	
SC-50-F03-45	Qi port cylinder head gasket graphite	1	
SC-50-F03-46	Bolt M6x18	1	
SC-50-F03-47	One-way reed valve cover	1	
SC-50-F03-48	Whole pieces of the cylinder head cover	1	

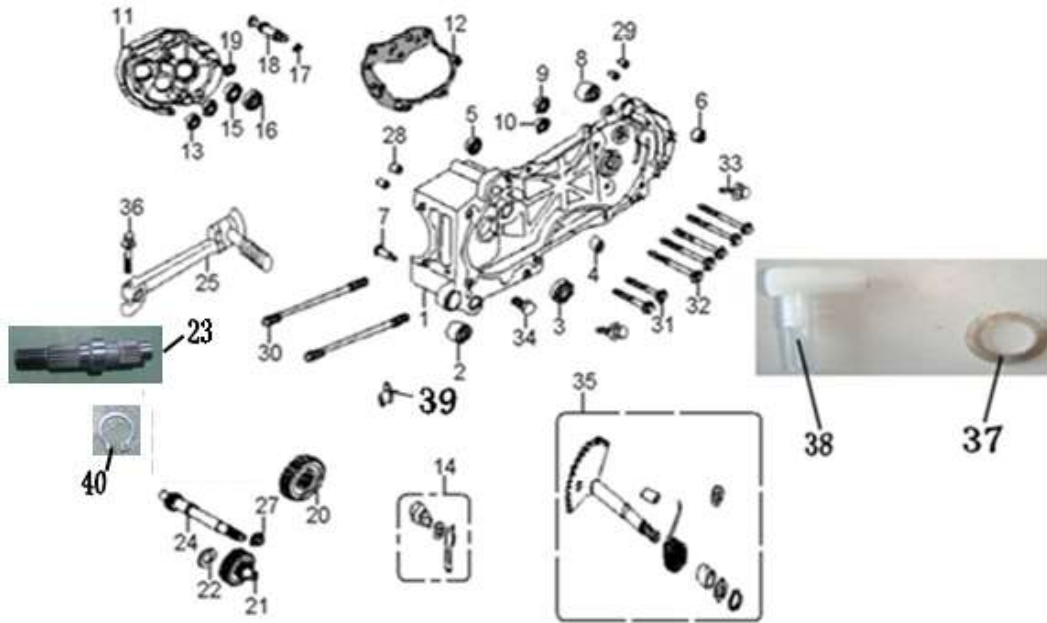
## 50CC SHORT CASE ENGINE F04



## 50CC SHORT CASE ENGINE F04

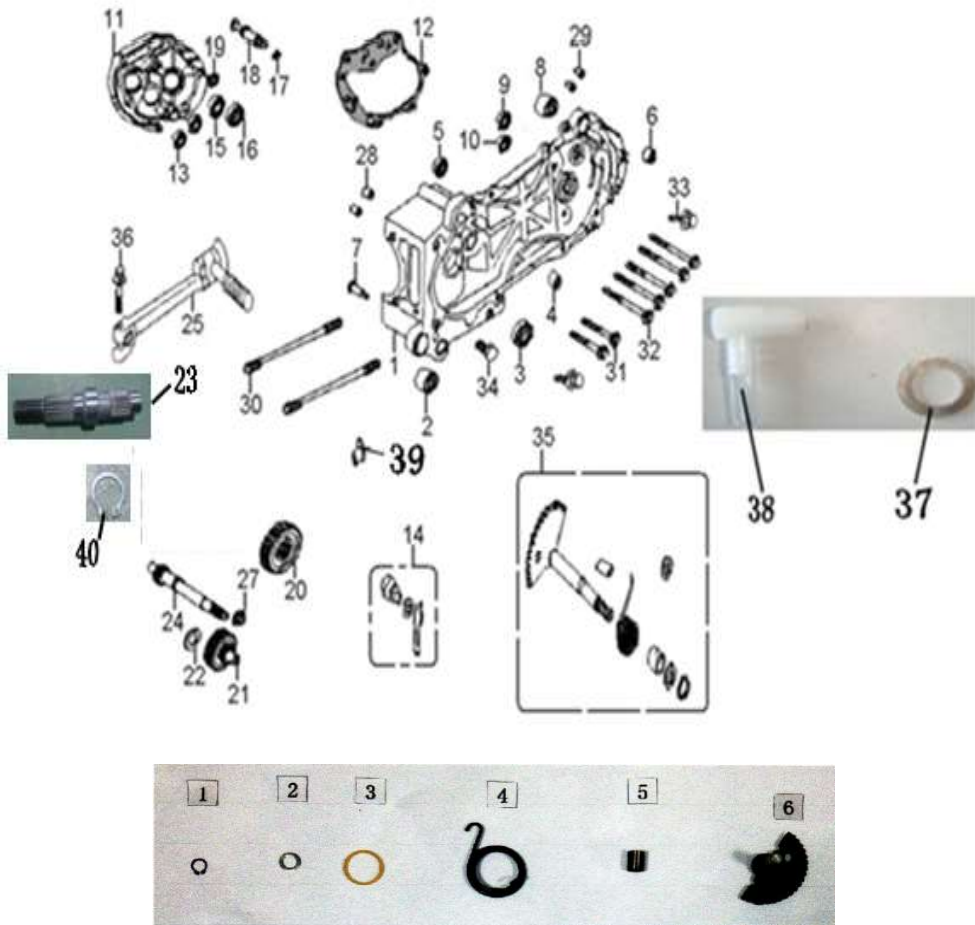
PART #	DESCRIPTION	QTY
SC-50-F04-1	Crank case comp right	1
SC-50-F04-2	Gasket crank case	1
SC-50-F04-3	Bush enging hanger	1
SC-50-F04-4	Bush mainstand	1
SC-50-F04-5	Bowel pin 8x14	2
SC-50-F04-6	Pump assy oil	1
SC-50-F04-7	Starting motor assy	1
SC-50-F04-8	Sprocket drive	1
SC-50-F04-9	Clutch	1
SC-50-F04-10	Bowel pin 8x10	2
SC-50-F04-11	O-ring 9x1.6	2
SC-50-F04-12	Double end studs M7x168	2
SC-50-F04-13	Bolt M6x45	1
SC-50-F04-14	Bolt M6x25	3
SC-50-F04-15	Bolt M6x22	2
SC-50-F04-16	Bolt M6x25	1

## 50CC SHORT CASE ENGINE F05



PART #	DESCRIPTION	QTY
SC-50-F05-1	Crank case comp left	1
SC-50-F05-2	Bush enging hanger	1
SC-50-F05-3	Left oil seal 19.8 * 30 * 5	1
SC-50-F05-4	Bush $\varnothing 8 \times 12 \times 9.5$	1
SC-50-F05-5	Bearing radial ball6203	1
SC-50-F05-6	Oil seal 17*30*6	1
SC-50-F05-7	Sping hook mainstand	1
SC-50-F05-8	Shock absorber tube	1
SC-50-F05-9	Bearing radial ball6201	1
SC-50-F05-10	Bearing radial ball6303	1
SC-50-F05-11	Gear box case	1
SC-50-F05-12	Paper cushion gear	1
SC-50-F05-13	Bearing radial ball6201	2
SC-50-F05-14	Starting claw	1
SC-50-F05-15	Bearing radial ball6004	1
SC-50-F05-16	Oil seal 27 $\times$ 42 $\times$ 7	1
SC-50-F05-17	O-ring 7.5x1.5	1
SC-50-F05-18	Pin brake shoe anchor	1

## 50CC SHORT CASE ENGINE F05



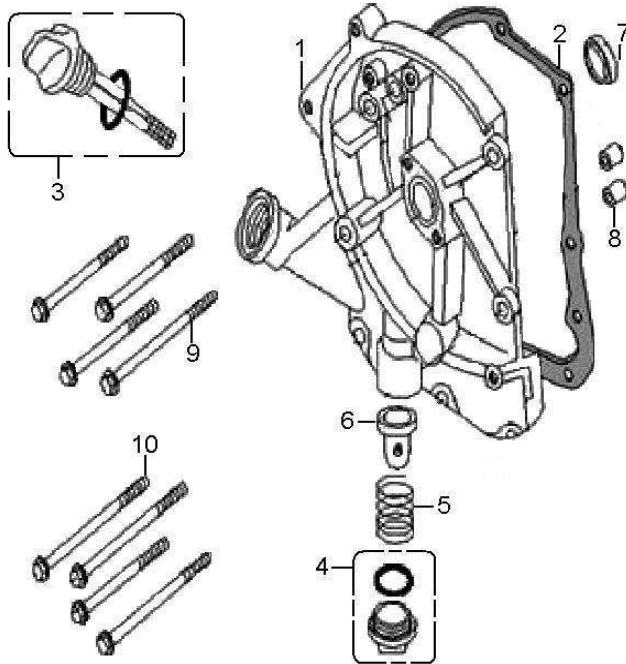
## 50CC SHORT CASE ENGINE F05

PART #	DESCRIPTION	QTY
SC-50-F05-19	Nut M8	1
SC-50-F05-20	Final gear	1
SC-50-F05-21	Mid gear	1
SC-50-F05-22	Washer side	1
SC-50-F05-23	Output shaft (short axis )	1
SC-50-F05-24	Input shaft	1
SC-50-F05-25	Kick start pedal	1
SC-50-F05-26	Nut M10	1
SC-50-F05-27	Bowel pin 8x14	2
SC-50-F05-28	Bowel pin <b>10*20</b>	2
SC-50-F05-29	Bolt b stud M7x176	2
SC-50-F05-30	Bolt flange M8x35	5
SC-50-F05-31	Bolt flange M8x40	2
SC-50-F05-32	Bolt M8×12	2
SC-50-F05-33	Oil plug	1
SC-50-F05-34	Starter shaft assembly (length 55)	1
SC-50-F05-A1	Retaining ring Ø 14	1

SC-50-F05-A2	Gasket 14 * 21 * (1.5 2.5)	1	
SC-50-F05-A3	ring	1	
SC-50-F05-A4	Feet start return spring	1	
SC-50-F05-A5	Starting shaft bushing	1	
SC-50-F05-A6	Starting shaft	1	
SC-50-F05-41	Bolt M6x20	1	
SC-50-F05-42	Oil drain plug gasket (ø12 * 20 * 1.5)	1	
SC-50-F05-43	Room ventilation pin plastic gear	1	
SC-50-F05-44	Bush mainstand	1	
SC-50-F05-45	Output shaft snap ring	1	



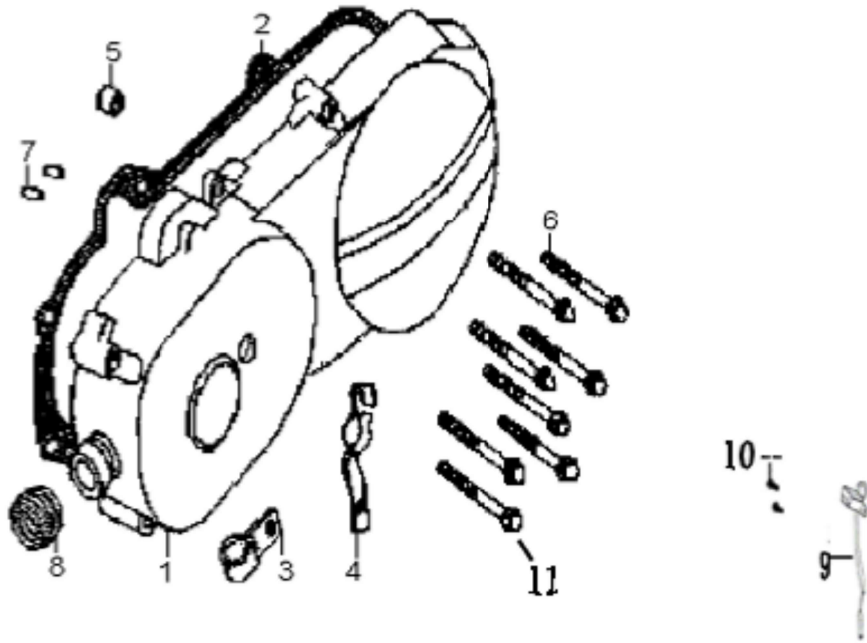
## 50CC SHORT CASE ENGINE F06



## 50CC SHORT CASE ENGINE F06

PART #	DESCRIPTION	QTY
SC-50-F06-1	Right crankcase cover	1
SC-50-F06-2	Right crankcase cover paper pad	1
SC-50-F06-3	Fuel guage assy,	1
SC-50-F06-4	O-ring and oil network cover	1
SC-50-F06-5	Oil filter spring	1
SC-50-F06-6	Oil network	1
SC-50-F06-7	Oil seal 16.4 * 30 * 5	1
SC-50-F06-8	Bowel pin 8x14	2
SC-50-F06-9	Bolt m6x85	4
SC-50-F06-10	Bolt m6×100	4

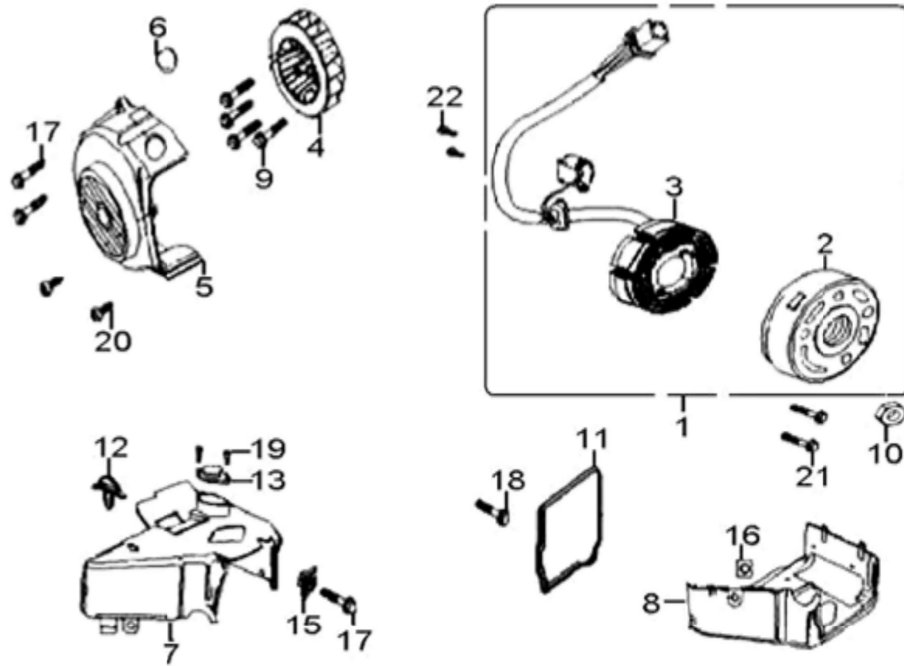
50CC SHORT CASE ENGINE F07



50CC SHORT CASE ENGINE F07

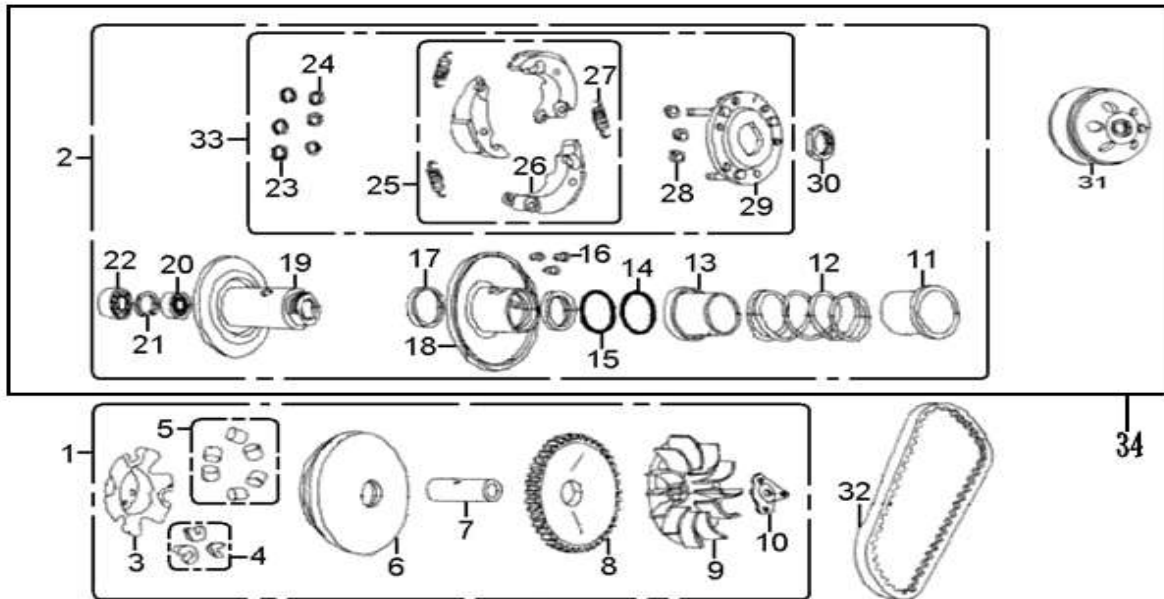
PART #	DESCRIPTION	QTY
SC-50-F07-1	Wuyang jet black short box side cover	1
SC-50-F07-2	Gaskett lcover	1
SC-50-F07-3	Clamper brake cable	1
SC-50-F07-4	Throttle cable clip	1
SC-50-F07-5	Bush $\varnothing 8 \times 12 \times 9.5$	1
SC-50-F07-6	Bolt M6 $\times$ 35	7
SC-50-F07-7	Bowel pin 8x14	2
SC-50-F07-8	Duct l cover	1
SC-50-F07-9	Speed line	1
SC-50-F07-10	Bolt M5 $\times$ 8	2
SC-50-F07-11	Bolt M6 $\times$ 40	1

## 50CC SHORT CASE ENGINE F08

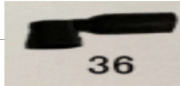
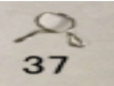


PART #	DESCRIPTION	QTY
SC-50-F08-1	Magnetic motor assembly	1
SC-50-F08-2	Magneto flywheel	1
SC-50-F08-3	Magneto Coil	1
SC-50-F08-4	Wind wheel	1
SC-50-F08-5	Wind impeller cover	1
SC-50-F08-6	Peephole cover	1
SC-50-F08-7	Shroud comp b	1
SC-50-F08-8	Shroud assy a	1
SC-50-F08-9	Bolt M6x16	4
SC-50-F08-10	Nut flange M10	1
SC-50-F08-11	Oil seal cover assy fan	1
SC-50-F08-12	Clip vacuum tube	1
SC-50-F08-13	Box tensioner lifter	1
SC-50-F08-15	Nut clip M6	1
SC-50-F08-16	Nut clip M6	1
SC-50-F08-17	Bolt M6x25	2
SC-50-F08-18	Bolt M6x16	2
SC-50-F08-19	Screw tapping st4.2x12	2
SC-50-F08-20	Screw tappingst5x16-c-h	2
SC-50-F08-21	Bolt M6x22	2
SC-50-F08-22	Bolt hex M5X12	2

50CC SHORT CASE ENGINE F09



PART #	DESCRIPTION	QTY
SC-50-F08- 01	Driving wheel assembly	1
SC-50-F08- 02	Plate sub assy driven	1
SC-50-F08- 03	Ramp plate	1
SC-50-F08- 04	Ramp Edge Piece Set	1
SC-50-F08- 05	Ball assembly	1
SC-50-F08- 06	FACE COMP MOVABLE DRIVE	1
SC-50-F08- 07	Village sets of driving wheel	1
SC-50-F08- 08	Drive belt drive gear	1
SC-50-F08- 09	Face drive	1
SC-50-F08- 10	Starting spine Gear	1
SC-50-F08- 11	Upper holder, spring	1
SC-50-F08- 12	Spring, driven face	1
SC-50-F08- 13	Lower holder, spring	1
SC-50-F08- 14	O-ring 36x1.5	1
SC-50-F08- 15	O-ring 39.8x2.2	1
SC-50-F08- 16	Pin, roller guide	3
SC-50-F08- 16	Oil seal 34x39x3	2
SC-50-F08- 17	Face comp movable driven	1
SC-50-F08- 18	Driven pulley	1
SC-50-F08- 19	Brg rakeal ball	1
SC-50-F08- 20	Circlip in 24	1
SC-50-F08- 21	Brg needle 17x25x18	1
SC-50-F08- 22	Circlip 6	3
SC-50-F08- 23	Thrust washer 6	3
SC-50-F08- 24	Clutch brake shoe set	1
SC-50-F08- 25	Weight set clutch	3
SC-50-F08- 26	Spring clutch	3

SC-50-F08- 27	Rubber clutch dumper	3	
SC-50-F08- 28	Fixing holder assy, brake shoe	1	
SC-50-F08- 29	Nut special m28	1	
SC-50-F08- 30	Outer clutch	1	
SC-50-F08- 31	Belt drive (669)	1	
SC-50-F08- 32	Plate assy drive	1	
SC-50-F08- 33	Pulley assy driven	1	
SC-50-F08- 34		1	
SC-50-F08- 35		1	