

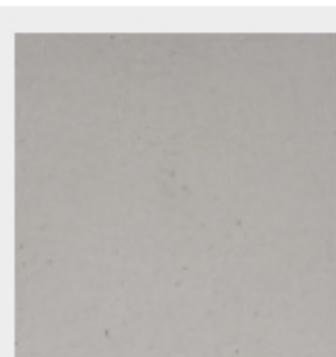
Natural Concrete Finishes

A Smooth organic concrete finish with a commercial grade sealer.

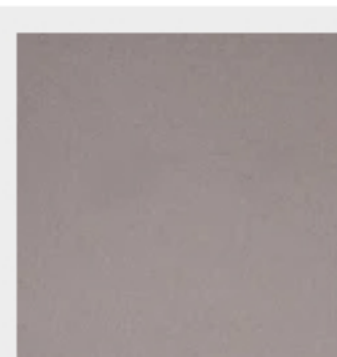
- Medium to heavy variation
- Natural Concrete Sealing Process
- Modern Look and Appeal



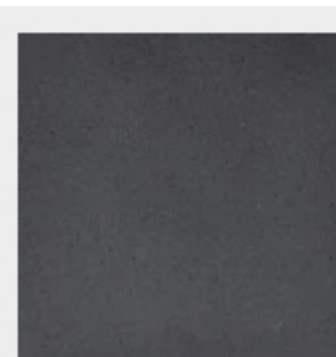
Geo Round Vase
Finish: Morning Fog



Morning Fog



Rain Cloud



Evening Storm

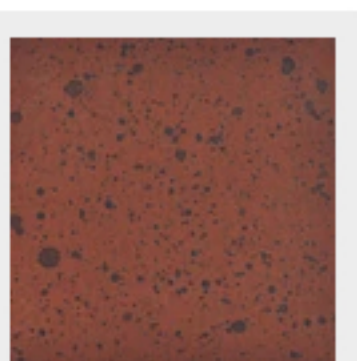
Premium Finishes

These premium finish options are set in deep cloudy tones of color that present an extra layer of depth similar to polished concrete.

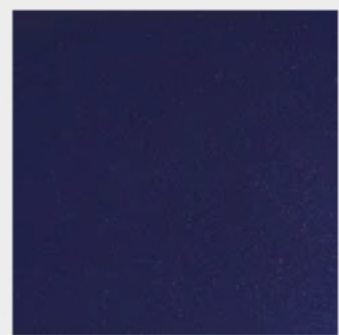
- Medium Variation
- Stained Concrete Finish
- Commercial Grade Sealer



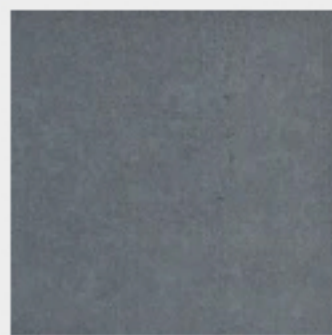
Legacy Round
Finish: Burnt Terra Cotta



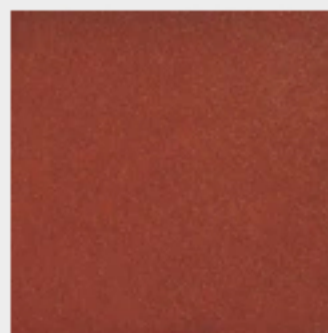
Burnt Terra



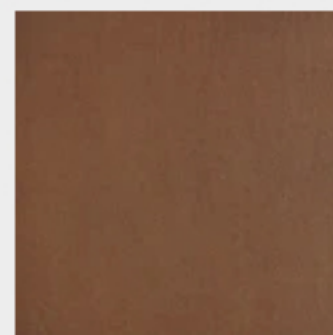
Cobalt Blue



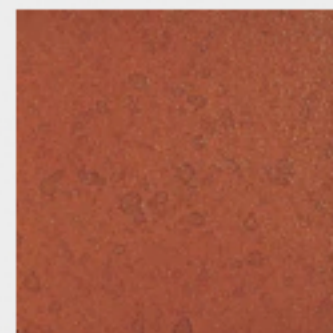
English Lead



Sequoia



Khaki



Deep Amber



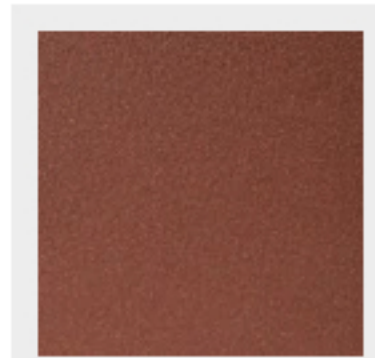
Metallic Finishes

Our two toned hand applied process brings an extra layer of dimension to the stunning reflective surface.

- Light Variation
- Painted Metallic Finish
- Commercial Grade Sealer



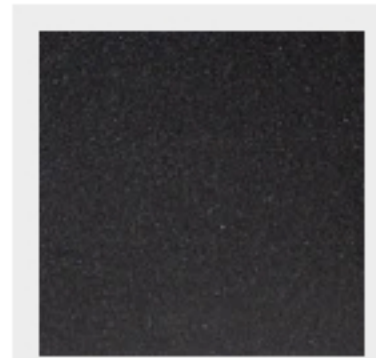
Manhattan Rectangle
Finish: Copper



Copper



Bronze



Gunmetal



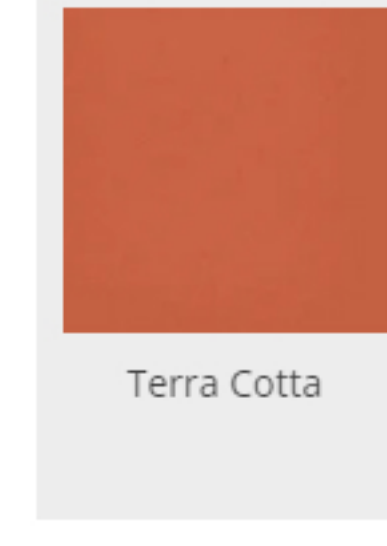
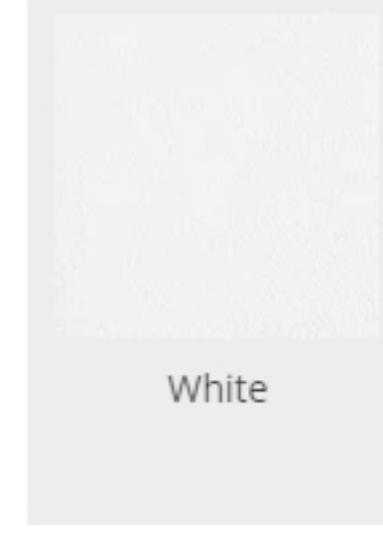
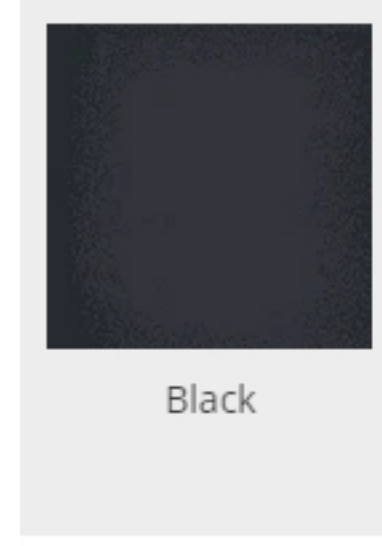
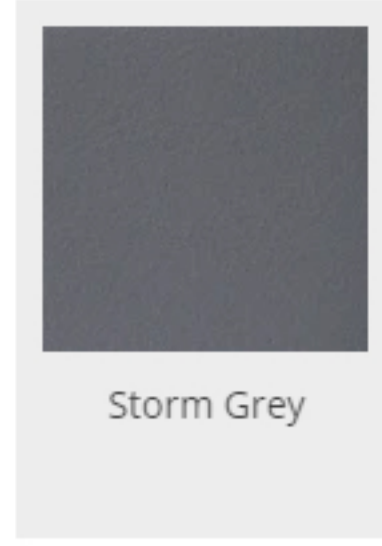
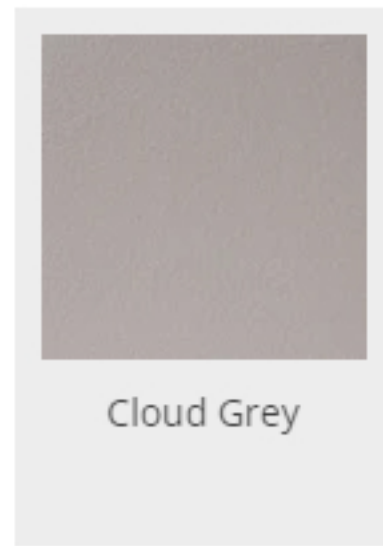
Solid Finishes

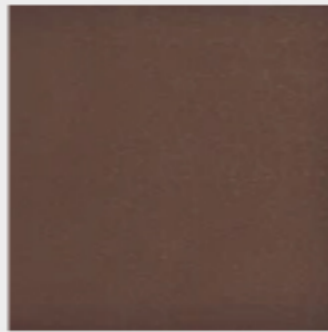
ARCHPOT solid painted finishes are just as strong as they are beautiful keeping your product looking sharp and vibrant for years to come.

- Consistant Color
- Painted Solid Finish
- Commercial Grade Sealer

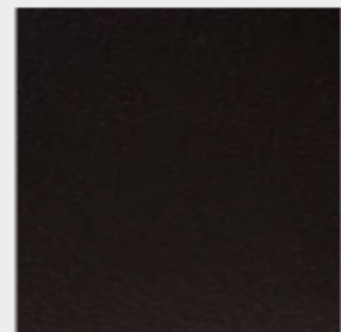


Executive Low Bowl
Finish: Black

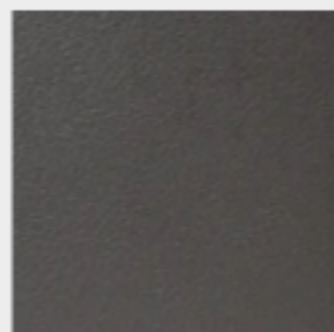




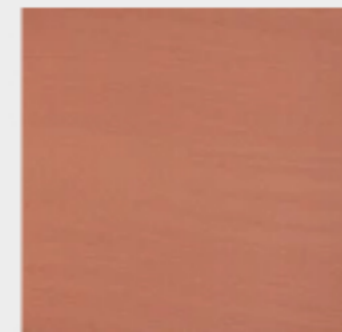
Beechwood



Dark Walnut



Urban Slate



Tuscan Wash

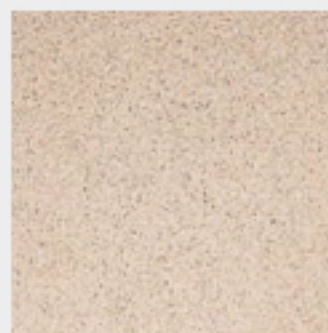
Cast sand Stone Finishes

Our Cast Sandstone is a highly refined precast concrete intended to simulate natural-cut stone.

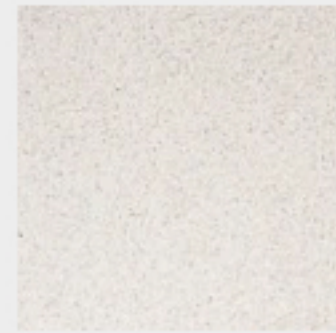
- Light Variation
- Acid Etched Precast Finish
- Commercial Grade Sealer



Legacy Square -
Limestone Finish



Lime Stone



Natural Stone