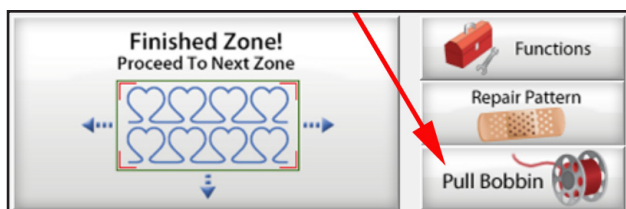


Quick Guide for Center Placement Between Zones

Rolling Rail Frame using Beginnings and Pro Versions

When your machine has finished sewing your zone:

Tap on "Pull Bobbin."

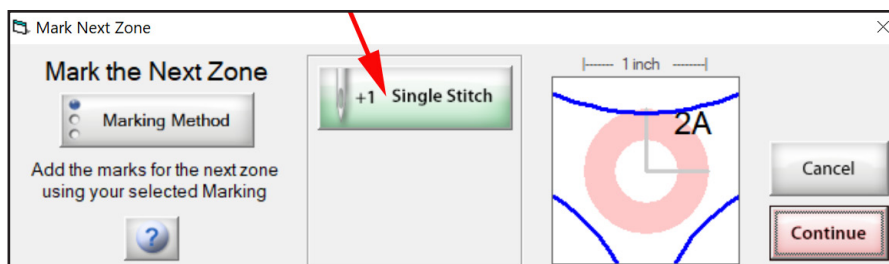


Tap on "Finished Zone! Proceed To Next Zone." The machine will now move to the center of zone.

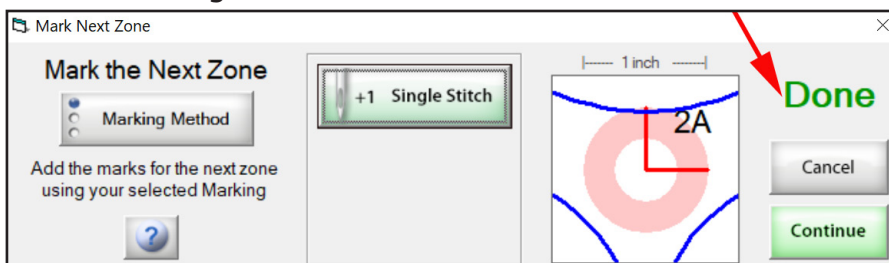


Put a piece of painter's tape under the hopping foot or whatever marking method you prefer.

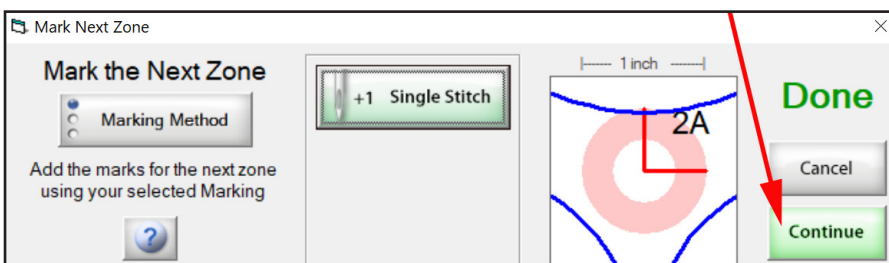
Tap on "Single Stitch."



You will now see "Done" on the right side of the window.

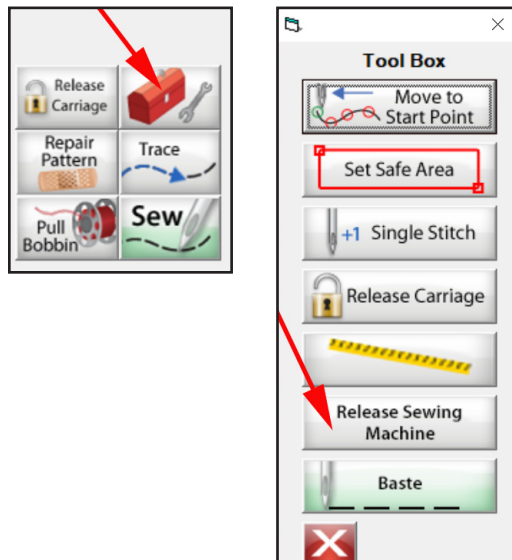


Tap on "Continue." The machine will move towards the back rail.

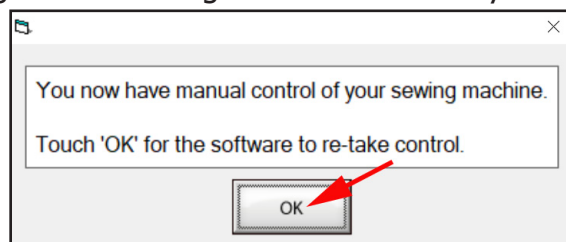


Advance your quilt.

Baste your sides (this is optional). Tap on the red tool box. Tap on "Release Sewing Machine" or use the Baste function for Q'nique machines. Some brands of sewing machines will not have "Release Sewing Machine" but you will have manual control.

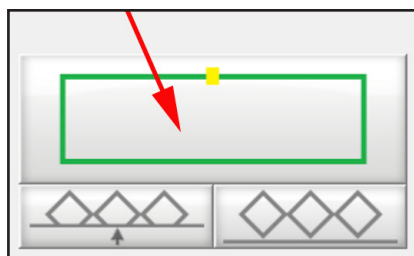


Tap on "OK" below the message about having manual control of your machine.



Move your machine over your tape or mark.

Tap on the placement button. Your pattern is now placed. Diamonds below button will change from gray to blue.



Tap on "Pull Bobbin," then "Sew."

