

# OWLS NEST



# QUILTERS

The WISE choice for all your  
Quilting & Embroidery needs

527 Bogart Lane | Grand Junction, CO 81505 | 970.241.5700  
[info@owlsnestquilters.com](mailto:info@owlsnestquilters.com) | [www.owlsnestquilters.com](http://www.owlsnestquilters.com)

## Quarterly Class Schedule & Newsletter

**2nd Quarter 2020**  
**April - June**



Beginner



Intermediate



Advanced

# Clubs & Open Sews

## Quarterly Quilty Pleasures Show & Share

### Meeting Once A Quarter

Sneak Peaks and specials. Bring a dish or treat to share. Bring a finished project to show off to all your friends and receive a drawing ticket for that evening's "Pick Your Own Prize" basket. Stay, mingle with friends, and learn about upcoming classes and events.

**(Potluck 5 p.m. - 6 p.m.)**

**Fri, June 5, 6 p.m. - 7 p.m.**



## Open Classroom

Need more room to stretch out? Use our classroom from 10 a.m. - 5 p.m. Due to popularity, we cannot accommodate the use of more than one spot per person.

**Tue, April 7, 14, 21 & 28**

**Wed, April 1, 8, 15 & 29**

**Tue, May 5, 12, 19 & 26**

**Wed, May 6, 13, 20 & 27**

**Tue, June 2, 9, 16, 23 & 30**

**Wed, June 3, 17 & 24**

## Bags of Love Charity Project



This charity project, featured in the *Daily Sentinel*, has grown in popularity and scope. Once a month, we meet to make handmade items for children who are taken from their homes and put into the foster system. We have concentrated on making items for infants and toddlers last quarter. This quarter, we will concentrate on making items for preschoolers-lower elementary age. Items can be made at home and brought to the shop or join us monthly for community and socializing as we work on our bags of love.

**Thur, April 16, 10 a.m. - 4 p.m.**

**Thur, May 21, 10 a.m. - 4 p.m.**

**Thur, June 18, 10 a.m. - 4 p.m.**



## Friday Night Sew - Girl Scouts



### Third Friday each month

We will be hosting Girl Scout Troop #13497 for an evening of sewing! If you are interested in volunteering please let us know.

**Fri, April 17, 5:30 p.m. - 8:30 p.m.**

**Fri, May 15, 5:30 p.m. - 8:30 p.m.**

**Fri, June 19, 5:30 p.m. - 8:30 p.m.**



# Clubs & Open Sews

## LUMINAIRE CLUB



We have them, now we want to know more about them. Using the Luminaire Playbook, we will go through a variety of machine features and operations as we create unique projects each month. If you are interested in the Luminaire, please join us. We will have a machine for you to test drive and see all the amazing features that this top-of-the-line machine offers.

**10:30 a.m. - 2 p.m.**

**Fri, April 3,** - Decorative Stitching, Buttonholes, Zipper techniques, etc.

**Fri, May 1,** - Stitch 'n Feet

**Sat, May 2,** - Luminaire Cover (10 a.m. - 4 p.m.)

**Fri, June 12,** - Echo Quilting

**Instructor:** Carol Schneider

**Cost:** \$30 per class



## SEWCIAL

## I Have A Dream Machine What's Next?

**Fourth Thursday each month**



We have our Dream Machines, now we need to know what all they can do. And, boy, can they do a whole lot!! Learn more techniques and uses for your awesome power tool. We will be learning specific techniques, operations, or accessories while we do a fun, easy project.

**Morning Session: 10 a.m. - 2 p.m.**

**Evening Session: 5 p.m. - 8 p.m.**

**Thur, April 23,** - Decorative Stitching, Buttonholes, Zipper techniques, etc.

**Sat, May 23,** - Dream Machine Cover (10 a.m. - 4 p.m.)

**Thur, May 28,** - Stitch 'n Feet

**Thur, June 25,** - Echo Quilting

**Instructor:** Carol Schneider

**Cost:** \$30 per class

**Second Tuesday each month**



Join us for early morning coffee from a different local coffee house, socializing, and a wee bit of sewing! We are enjoying sampling coffees from local coffee houses while easing into our day and into our projects. We are working on completing a coffee-themed applique wall hanging. We are taking our time and enjoying the creative process, learning new techniques, and enjoying each other's company.

Kits will be available for purchase at varying prices, depending upon the project.

**Tue, April 14, 8:30 a.m. - 10 a.m. (Kiln)**

**Tue, May 12, 8:30 a.m. - 10 a.m. (Roasted)**

**Tue, June 9, 8:30 a.m. - 10 a.m. (Enstrom)**



# Clubs & Open Sews

## Featherweight Open Sew

**First Thursday each month**

Join us every month on the first Thursday for a Featherweight (and Vintage Machine) community! Each month you can work on a project we have or bring your own! It's a time for fun and stories about your Featherweight and how you found it. We also go over basic maintenance and the inner working of these sweet sewers. Owl's Nest Quilters is the only place in the valley to find Featherweight supplies and if we do not have it, we can order it!

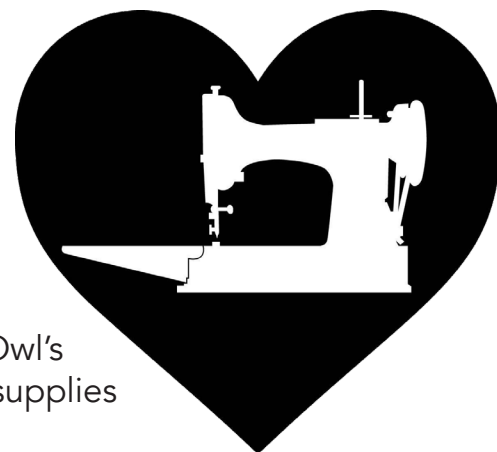
**Thur, April 2, 10 a.m. - 5 p.m.**

**Thur, May 7, 10 a.m. - 5 p.m.**

**Thur, June 4, 10 a.m. - 5 p.m.**

**Instructor:** Karen Murray Boston

**Cost:** FREE!!!



## THE *Embroidery* CLUB

Sweet Pea Club is going to be called Embroidery Club from now on. We have had a great ride with Sweet Pea but there are so many wonderful, independent embroidery designers out in the world that we can no longer contain ourselves and must share what we are discovering. From now on, we are going to introduce you to new designers and designs, while cycling back from time to time to our comfy favorites in Sweet Pea, Kimberbell, OESD, and Anita Good. Each month, Jen will take you through exciting new projects that use different techniques and materials.

*Note: If you paid for the year-long Sweet Pea club, it ends in June. Beginning in July, we will be changing to a \$30 + optional kit fee per class.*

**Fri, April 17 OR Sat, April 18**

**10 a.m. - 4 p.m.**

**Fri, May 15 OR Sat, May 16**

**10 a.m. - 4 p.m.**

**Fri, June 19 OR Sat, June 20**

**10 a.m. - 4 p.m.**





# Classes

## Bias Strip Table Runner

Do sewing bias strips and curves get you stumped? Join Nicki for a quick and easy but oh-so-beautiful bias strip table runner. Learn how to work with bias tape along elegant curves. This three-fabric table runner will dress up any dinner party. If you have a Luminaire or Dream Machine, you will also learn how to quilt this beauty in the embroidery mode. There's no need to send this one out for quilting.

**Tue, April 7, 5 - 8 p.m.**

**Instructor:** Nicki Johnson

**Cost:** \$25

## Serape

This is a continuation of our basic sewing classes. Fine tune your sewing skills while making a versatile serapé to wear during cool spring nights. You will be introduced to different sewing techniques to add to your repertoire of skills. This is sure to be a wardrobe favorite!

**Thur, April 30, 5 - 8 p.m.**

**Thur, May 21, 5 - 8 p.m.**

**Instructor:** Heather Waggoner

**Cost:** \$35 (includes both sessions)

## Faux Binding

Join Michele as she goes through the process of her perfected technique of sewing a faux binding. This will be the first of several binding technique classes that Owls Nest will offer throughout the year.

**Fri, May 29, 10 a.m. - 1 p.m.**

**Instructor:** Michele Wells

**Cost:** \$20

## P2 Carnival - Mini Mystery Quilt

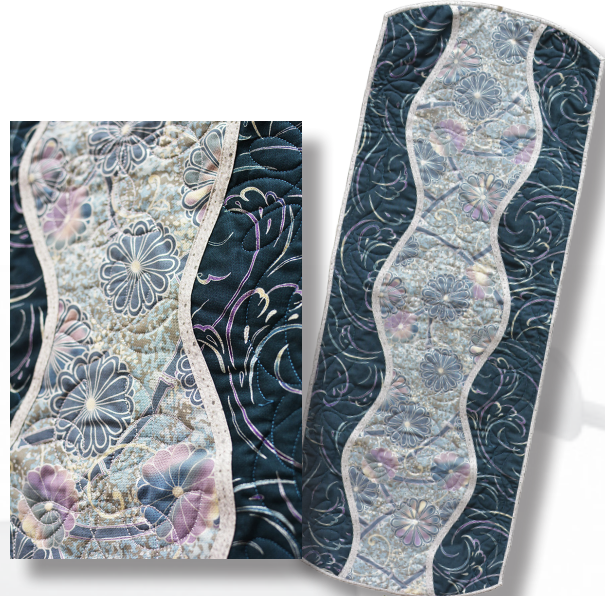
**Once Per Quarter**

You can see the fabrics, but if you want to see the pattern, you have to come play with us! You must register by *Tuesday, June 16th*.

**Tue, June 23, 6 - 9 p.m.**

**Instructor:** Ellen Petersen

**Cost:** \$10 + kit price



# Classes



## Sonja's Snuggables



Sonja Kent is a pattern designer of the cutest, most snuggable animals. She had a long career of creating patterns for Simplicity and is now going to be here to share her skills with us. Currently Sonja owns and sells her snuggables at Homespun in the Peach Tree Plaza in Clifton. We will have the pleasure of learning how to create two of her adorable animals—a triceratops and horse. Both animals will be completed at the end of the day. These would be great stuffed animals to donate for the Bags of Love project if you don't have any wee ones to gift them to.

**Fri, May 8, 10 a.m. - 4 p.m.**

**Instructor:** Sonja Kent

**Cost:** \$30

## Log Cabin



This is a continuation of our basic piecing series. The log cabin quilt is a great way to continue to further improve your cutting, pressing, and piecing skills with this long-standing quilt block. April will take you step-by-step through the process.

Three session class:

**Wed, April 8, 5 - 8 p.m.**

**Wed, April 29, 5 - 8 p.m.**

**Wed, May 13, 5 - 8 p.m.**

**Instructor:** April Kaiser

**Cost:** \$45 (includes all three sessions)

## Panel Play



Back by popular demand! We all have them—the beautiful or adorable panel that we couldn't live without. Then once we got home, we looked at it and thought, "Now what I am going to do with this?" Join Carol as she guides the creative process for brainstorming ways to use those panels that you have in your stash. This is not your usual class. It is a free-flowing exchange of ideas and sharing of ways that others have creatively used panels. Join us for this fun and interactive class!

**Wed, May 27, 5 - 8 p.m.**

**Instructor:** Carol Schneider

**Cost:** \$10





# Classes

## Earth Day Projects



Use your talents to create earth-friendly projects that are reusable and lessen our footprint on the environment. April will help you create a foldable sack that can easily be slipped into your purse or tote to hold your daily purchases rather than using plastic bags that are thrown away and added to the landfill. (These plastic bags can be recycled. There are receptacles at Walmart and City Market for plastic bag recycling.) Carol will be on hand to show you how to make waxed fabric covers to replace single use plastic wraps. Take your skills to a whole new level of environmental consciousness!

**Wed, April 22, 10 a.m. - 4 p.m.**

**Instructor:** Carol Schneider & April Kaiser

**Cost:** \$20



## Star Spangled Celebration



We see the Stars and Stripes and instinctively put a hand over our heart as if to hold all the emotion. Chances are you have a connection to someone who stood in defense of freedom or sacrificed to improve the lot of another. Kimberbell's Star Spangled Celebration embroidery event honors hometown heroes and expresses gratitude to military veterans, while we celebrate the USA.

**Sat, June 6, 10 a.m. - 5 p.m.**

**Instructor:** Jennifer Behen

**Cost:** \$99



## Kid's Camp



Are there children in your life who have always wanted to learn how to sew? This summer Owls Nest will have it's first summer sewing camp for children ages 8-12 years old. Parent or guardian must stay with child as they learn new techniques to create a fun Monster bag and cute reading pillow. Bring a sack lunch, waterbottle, and we will provide a few snacks for our fun 2-day camp:

**Wed, June 10, 10 a.m. - 3 p.m.**

**Thur, June 11, 10 a.m. - 3 p.m.**

**Instructor:** Carol Schneider & April Kaiser

**Cost:** \$25 per day + kit price





# Classes



## Clothing Construction 101: Basic T-Shirt



You really can make it better yourself and learn to sew clothes that fit your unique body shape! This class will take you through reading a clothing pattern, taking measurements, adjusting the pattern for your personal measurements, and sewing a basic t-shirt. The pattern we will be using is size inclusive 0-36.

Two session class:

**Tue, April 14, 5 - 9 p.m.**

**Thur, April 16, 5 - 9 p.m.**

**Instructor:** Allison Rehor

**Cost:** \$45 (includes both sessions)

## HST Around The World



So you say you don't like half square triangles? By the time you finish with this quilt, you will be a pro! Join Sharon Palmer on her trip around half square triangles with her tips and tricks. This pattern by Missouri Star is a fun and easy one to create. You only need one layer cake and a coordinating fabric for the border.

**Sat, April 25, 10 a.m. - 4 p.m.**

**Instructor:** Sharon Palmer

**Cost:** \$30

## OESD Free Standing Lace Easter Eggs



Join us for a fun-filled day of Easter egg coloring! These FSL Easter eggs are so beautiful, you will want to make several for family and friends in a wide range of colors. They are a great way to decorate your home for the Easter season.

**Sat, April 4, 10 a.m. - 4 p.m.**

**Instructor:** Jennifer Behen

**Cost:** \$30

## Straight A Quilt



Many of you have the Squedge ruler already! Use your Squedge to make this colorful and vibrant quilt designed by Cheryl Phillips.

**Wed, June 17, 5 - 8 p.m.**

**Instructor:** Carol Schneider

**Cost:** \$25



# Classes

## April's Owlettes - Trim The Tree



Get a jump start on your adorable Christmas tree! Another easy foundation paper-pieced project with larger, manageable pieces that is perfect to decorate any door or wall in your house. A finishing class will be scheduled for July completion!

**Thur, May 14, 10 a.m. - 4 p.m.**

**Instructor:** April Kaiser

**Cost:** \$34 (Confident Beginner)

## Drafting a Personal Body Sloper AKA Making Your Own Clothing Patterns



Don't settle for what you can find in stores; learn how to make your own clothing patterns. In this class, Heather will cover the entire process of making a body sloper for your personal body shape. The sloper becomes the basis upon which all your clothes can be constructed—ones that will actually fit your figure.

Three session class:

**Sat, April 11, 10 a.m. - 4 p.m.**

**Tue, April 21, 5 - 8 p.m.**

**Wed, May 6, 5 - 8 p.m.**

**Instructor:** Heather Waggoner

**Cost:** \$55 (includes all three sessions)

## Tumbling Triangles



Ellen Petersen will be teaching this Oh-So-Cute quilt and new ruler technique. Come see the sample on the wall - it only takes two fabrics! The pattern includes six different sizes from wall to queen.

**Sat, June 27, 10 a.m. - 4 p.m.**

**Instructor:** Ellen Petersen

**Cost:** \$30

## The Beatle Bag & Edison Bag

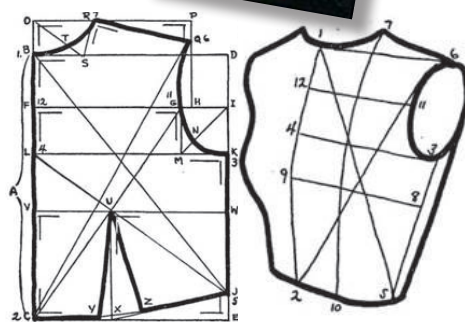


Funny name, awesome bags! These are your personalized traveling bag. They can be used as a sewing kit, but you could also store beads, flosses, make-up or jewelry. Great for all kinds of uses. Want to make more than one? Extra inserts are available for purchase.

**Sat, May 9, 10 a.m. - 5 p.m.**

**Instructor:** Nicki Johnson

**Cost:** \$34





# Continuing Block-of-the-Month



## Scan'N Cut Techniques



Join Jen and Carol for Scan 'N Cut exclusive projects. Learn how to use your Scan 'N Cut in a variety of ways, using a variety of materials, such as foil and heat transfer vinyl to decorate and glam up your wardrobe. Your Scan'N Cut can be used for so much more than just applique!

**Fri, April 24, 1 - 4 p.m. - Glass Etching**

**Fri, May 22, 1 - 4 p.m. - Heat Vinyl Transfer**

**Fri, June 26, 1 - 4 p.m. - Machine-to-Machine Contact**

**Instructor:** Carol Schneider & Jennifer Behen

**Cost:** \$25 per class (Scan'N Cut required for class)

## Stars and Stripes



Join Kris Holderness for the unveiling and creation of her newest quilt design. This quilt will be a stunning addition to any 4th of July décor and a great way to remember those who have sacrificed their lives so that we might live free.

**Sat, May 30, 10 a.m. - 4 p.m.**

**Sat, June 13, 10 a.m. - 4 p.m.**

**Instructor:** Kris Holderness

**Cost:** \$30 per class



## Game Night

Yes! Game Night is back and better than ever. No purchase required to participate; just come and have fun. Ante up with 10 quilting quality fat quarters. We have exciting plans surrounding our passion and obsession for all things fabric. To begin Game Night again, we have paired it with Cinco de Mayo. We are planning a Mexican Potluck. Bring a delicious Mexican dish and enjoy the food and community.

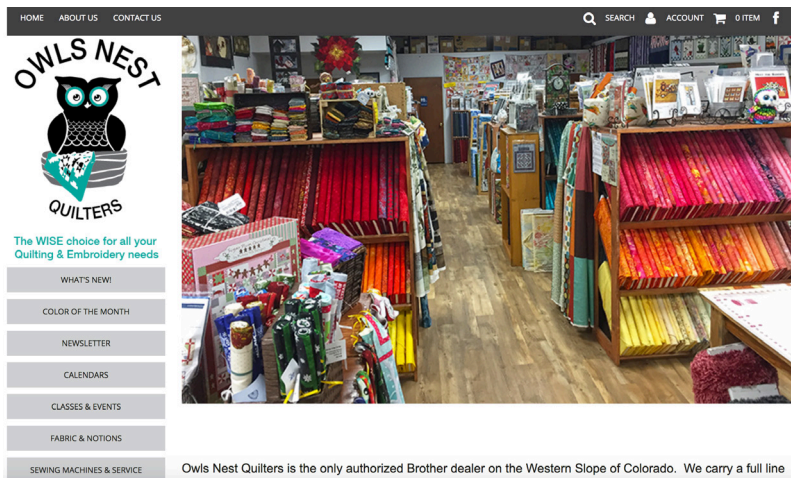
**Tue, May 5, 5 p.m. Dinner, Games afterwards**

Check out our website!  
[www.owlsnestquilters.com](http://www.owlsnestquilters.com)



**Like us on Facebook and Instagram!**

Join our Facebook and Instagram pages to receive class and event reminders and to make more quilting friends and connections. Keep up-to-date on what's happening at The Nest!



**Class Cancellation Policy:** With at least 72 hours notice, full class credit will be applied to your store account. With less than 72 hours notice, half the class fee will be credited to your store account. No shows will forfeit total class fee if notice is not given prior to the **start time** of the class.

**Two week cancellation required for guest teachers and special events for 100% store credit. No credit given for cancellations with less than one week notice. Early-bird sign-ups are non-refundable.**

# APRIL 2020

SUNDAY	MONDAY	TUESDAY	WEDNESDAY	THURSDAY	FRIDAY	SATURDAY
			1 Open Classroom 10 a.m. - 5 p.m.	2 Featherweight Open Sew 10 a.m. - 5 p.m.	3 Luminaire Club 10:30 a.m. - 2 p.m.	4 OESD Easter Egg 10 a.m. - 4 p.m.
5	6	7 Open Classroom 10 a.m. - 5 p.m. Bias Strip Table Runner 5 p.m. - 8 p.m.	8 Open Classroom 10 a.m. - 5 p.m. Log Cabin 5 p.m. - 8 p.m. (1 of 3)	9 April's Owlettes Scrap Happy Spools - Finishing 10 a.m. - 4 p.m.	10	11 Body Sloper AKA Clothing Pattern 10 a.m. - 4 p.m.
12	13	14 Breakfast Sewcial 8:30 a.m. - 10 a.m. Open Classroom 10 a.m. - 5 p.m. Clothing Construction 101 5 p.m. - 9 p.m. (1 of 2)	15 Open Classroom 10 a.m. - 5 p.m.	16 Bags of Love 10 a.m. - 4 p.m. Clothing Construction 101 5 p.m. - 9 p.m. (2 of 2)	17 Embroidery Club 10 a.m. - 4 p.m. Girl Scouts Friday Night Sew 5:30 p.m. - 8:30 p.m.	18 Embroidery Club 10 a.m. - 4 p.m.
19	20	21 Open Classroom 10 a.m. - 5 p.m. Body Sloper AKA Clothing Pattern 5 p.m. - 8 p.m.	22 Earth Day Projects 10 a.m. - 4 p.m.	23 I Have A Dream Machine: What's Next? 10 a.m. - 2 p.m. OR 5 p.m. - 8 p.m.	24 Scan'N Cut Glass Etching 1 p.m. - 4 p.m.	25 Half Square Triangle Around the World 10 a.m. - 4 p.m.
26	27	28 Open Classroom 10 a.m. - 5 p.m.	29 Open Classroom 10 a.m. - 5 p.m. Log Cabin 5 p.m. - 8 p.m. (2 of 3)	30 Serape 5 p.m. - 8 p.m. (1 of 2)		



The WISE Choice For Your Quilting & Embroidery Needs! | Spring 2020 11



# MAY 2020

SUNDAY	MONDAY	TUESDAY	WEDNESDAY	THURSDAY	FRIDAY	SATURDAY
					1 Luminaire Club 10:30 a.m. - 2 p.m.	2 Luminaire Club 10:30 a.m. - 4 p.m.
3	4	5 Open Classroom 10 a.m. - 5 p.m.  5 p.m. - ???	6 Open Classroom 10 a.m. - 5 p.m. Body Sloper AKA Clothing Pattern 5 p.m. - 8 p.m.	7 Featherweight Open Sew 10 a.m. - 5 p.m.	8 Sonja's Snuggables 10 a.m. - 4 p.m.	9 Beatle & Edison Bags 10 a.m. - 5 p.m.
10	11	12 Breakfast Sewcial 8:30 a.m. - 10 a.m. Open Classroom 10 a.m. - 5 p.m.	13 Open Classroom 10 a.m. - 5 p.m. Log Cabin 5 p.m. - 8 p.m. (3 of 3)	14 April's Owlettes Trim The Tree 10 a.m. - 4 p.m.	15 Embroidery Club 10 a.m. - 4 p.m. Girl Scouts Friday Night Sew 5:30 p.m. - 8:30 p.m.	16 Embroidery Club 10 a.m. - 4 p.m.
17	18	19 Open Classroom 10 a.m. - 5 p.m.	20 Open Classroom 10 a.m. - 5 p.m.	21 Bags of Love 10 a.m. - 4 p.m. Serape 5 p.m. - 8 p.m. (2 of 2)	22 Scan'N Cut Heat Vinyl Transfer 1 p.m. - 4 p.m.	23 I Have A Dream Machine: What's Next? 10:30 a.m. - 2 p.m.
24	25	26 Open Classroom 10 a.m. - 5 p.m.	27 Open Classroom 10 a.m. - 5 p.m. Panel Play 5 p.m. - 8 p.m.	28 I Have A Dream Machine: What's Next? 10 a.m. - 2 p.m. OR 5 p.m. - 8 p.m.	29 Faux Binding 10 a.m. - 1 p.m.	30 Stars and Stripes 10 a.m. - 4 p.m.
31						

# JUNE 2020

SUNDAY	MONDAY	TUESDAY	WEDNESDAY	THURSDAY	FRIDAY	SATURDAY
	1	2 Open Classroom 10 a.m. - 5 p.m.	3 Open Classroom 10 a.m. - 5 p.m.	4 Featherweight Open Sew 10 a.m. - 5 p.m.	5 Potluck 5 - 6 p.m. QP Show & Share 6 - 7 p.m.	6 Star Spangled Celebration 10 a.m. - 5 p.m.
7	8	9 Breakfast Sewcial 8:30 a.m. - 10 a.m. Open Classroom 10 a.m. - 5 p.m.	10 <b>KID'S CAMP</b> 10 a.m. - 3 p.m.	11	12 Luminaire Club 10:30 a.m. - 2 p.m.	13 Stars and Stripes 10 a.m. - 4 p.m.
14	15	16 Open Classroom 10 a.m. - 5 p.m.	17 Open Classroom 10 a.m. - 5 p.m. Straight A Quilt 5 p.m. - 8 p.m.	18 Bags of Love 10 a.m. - 4 p.m.	19 Embroidery Club 10 a.m. - 4 p.m. Girl Scouts Friday Night Sew 5:30 p.m. - 8:30 p.m.	20 Embroidery Club 10 a.m. - 4 p.m.
21	22	23 Open Classroom 10 a.m. - 5 p.m. P2 Carnival 6 p.m. - 9 p.m.	24 Open Classroom 10 a.m. - 5 p.m.	25 I Have A Dream Machine: What's Next? 10 a.m. - 2 p.m. OR 5 p.m. - 8 p.m.	26 Scan'N Cut Machine Contact 1 p.m. - 4 p.m.	27 Tumbling Triangles 10 a.m. - 4 p.m.
28	29	30 Open Classroom 10 a.m. - 5 p.m.				