

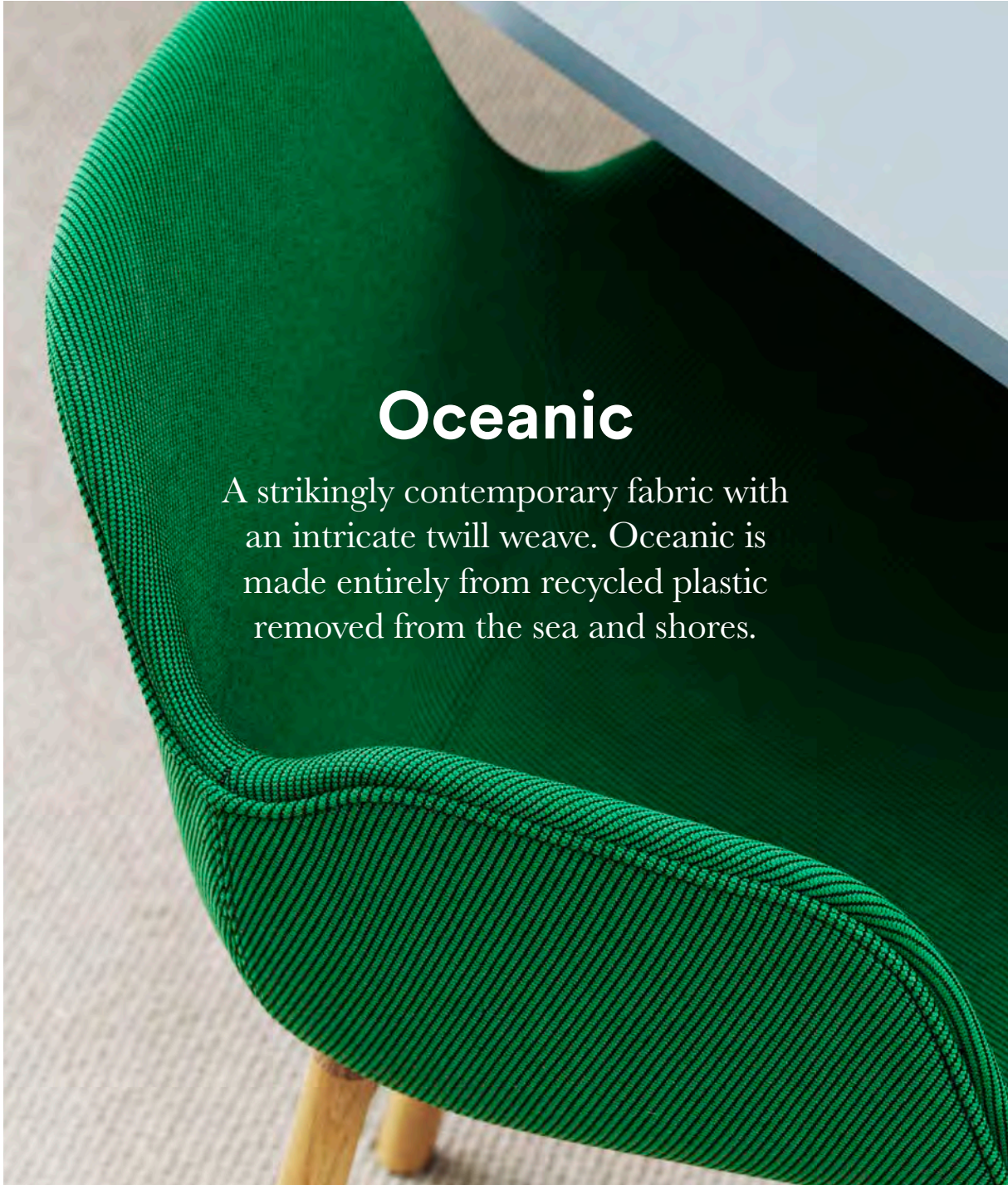
# Textiles

We have carefully curated our selection of textiles from some of the best suppliers on the market who operate to the highest environmental standards.



**normann**

C O P E N H A G E N

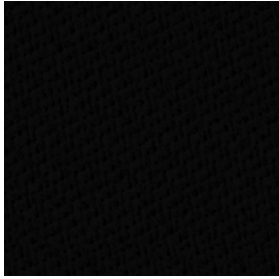


# Oceanic

A strikingly contemporary fabric with an intricate twill weave. Oceanic is made entirely from recycled plastic removed from the sea and shores.

<b>Manufacturer</b>	Camira	<b>Fastness to rubbing</b>	Wet: 4, Dry: 4 (ISO 105 - X12)
<b>Price Group</b>	1	<b>Light Fastness</b>	5 (ISO 105 - B02) OOC16: 4/5 (ISO 105 - B02)
<b>Composition</b>	100% post-consumer recycled polyester, including 50% SEAQUAL yarn.	<b>Flammability</b>	EN 1021 - 1 (cigarette) EN 1021 - 2 (match) BS 7176 Low Hazard Note: Flammability performance is dependent on components used. Our certificates show what substrates have been used in our tests. For composite tests customers must ensure their complete furniture meets the necessary standards.
<b>Environment</b>	Certified to OEKO-TEX® Standard 100 Certified to Indoor Advantage™ Gold Made from 100% post-consumer recycled polyester Nonmetallic dyestuffs		
<b>Abrasion resistance</b>	Heavy duty / 10 year guarantee Independently certified to ≥100.000 Martindale cycles		
<b>Weight</b>	497g/m2 ±5% (696g/lin.m ±5%)		

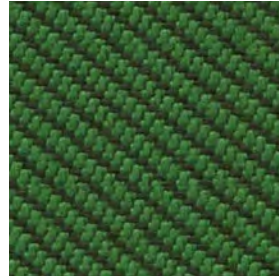
## Textiles Oceanic



**Flotsam**  
OOC01



**Jetsam**  
OOC02



**Coast**  
OOC03



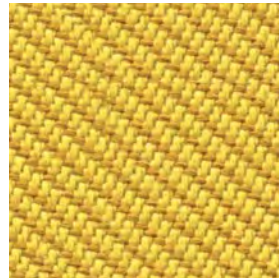
**Sea**  
OOC04



**Coral**  
OOC05



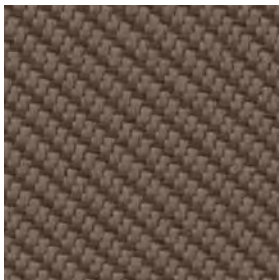
**Atoll**  
OOC06



**Barrier**  
OOC07



**Bay**  
OOC08



**Shore**  
OOC09



**Abyss**  
OOC10



**Neptune**  
OOC11



**Aquatic**  
OOC12



**Paddle**  
OOC13



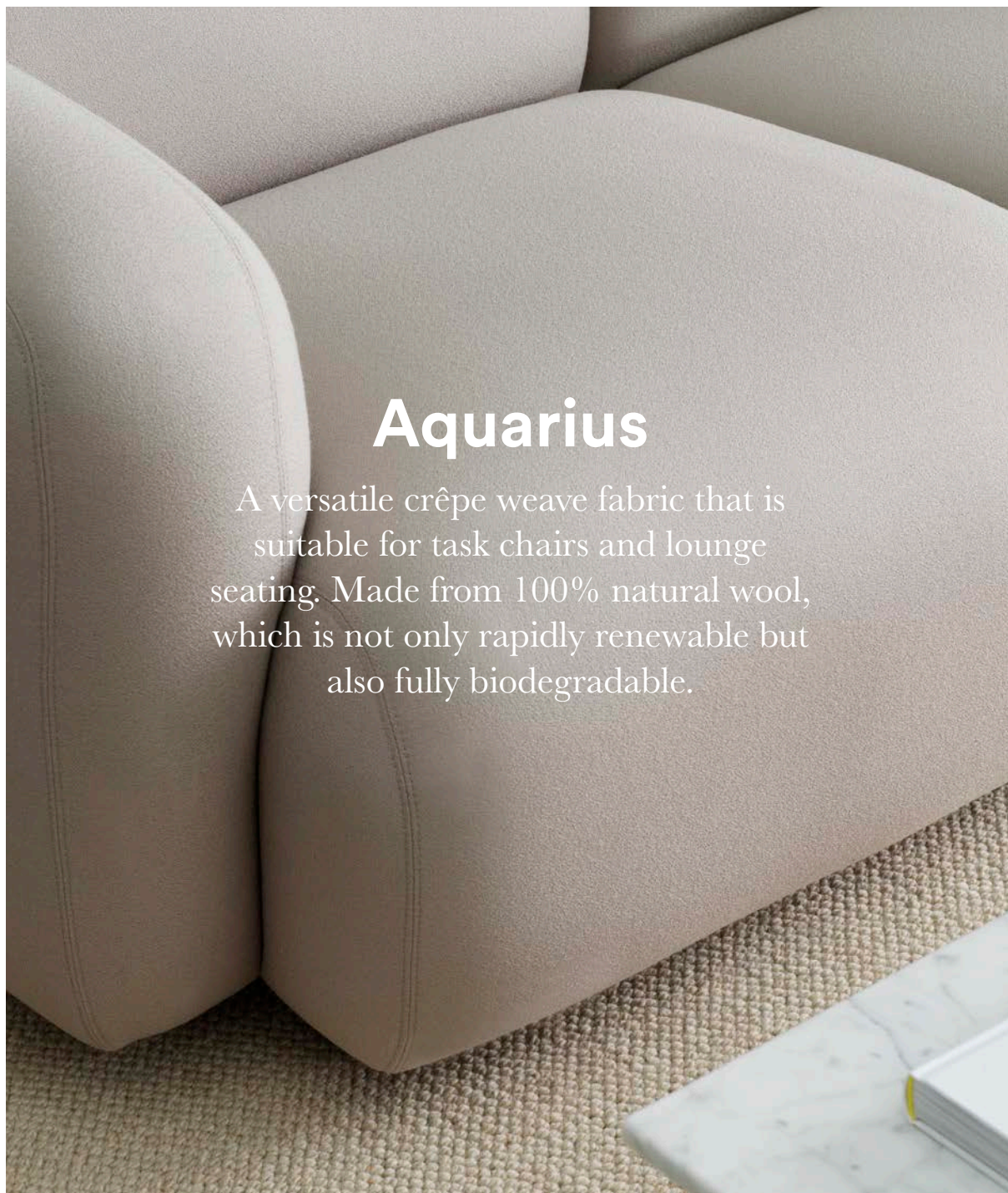
**Riptide**  
OOC14



**Gulf**  
OOC15



**Seafarer**  
OOC16



# Aquarius

A versatile crêpe weave fabric that is suitable for task chairs and lounge seating. Made from 100% natural wool, which is not only rapidly renewable but also fully biodegradable.

<b>Manufacturer</b>	Camira	<b>Fastness to rubbing</b>	Wet: 4, Dry: 4 (ISO 105 - X12)
<b>Price Group</b>	1	<b>Light Fastness</b>	5 (ISO 105 - B02)
<b>Composition</b>	100% virgin wool	<b>Flammability</b>	EN 1021-1&2 Cigarette & Match BS 7176 Low Hazard UNI 9175 Classe 1 IM BS 5852 Ignition Source 5 when FR treated BS 7176 Medium Hazard when FR treated BS 5867-2 Type B Curtains & Drapes when FR treated
<b>Environment</b>	Certified to Indoor Advantage™ "Gold" Rapidly renewable and compostable Nonmetallic dyestuffs		
<b>Abrasion resistance</b>	Heavy duty / 10 year guarantee. Independently certified to ≥50.000 Martindale cycles		
<b>Weight</b>	370 g/m2 ±5%		

Textiles Aquarius



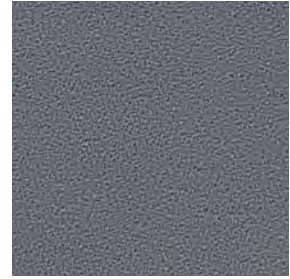
Heron  
JA001



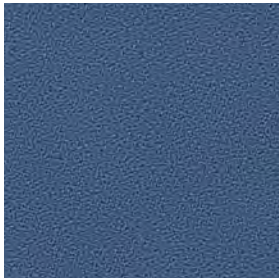
Pitch  
JA002



Mariner  
JA016



Rhino  
JA022



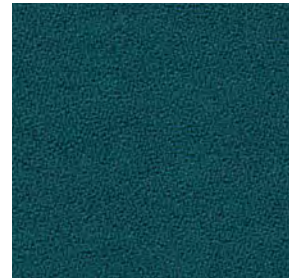
Porcelain  
JA024



Jezebel  
JA027



Paderborn  
JA047



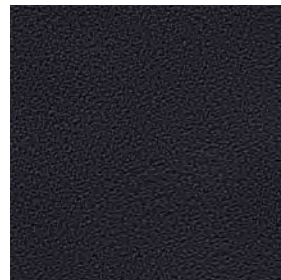
Biscay  
JA059



Vermillion  
JA062



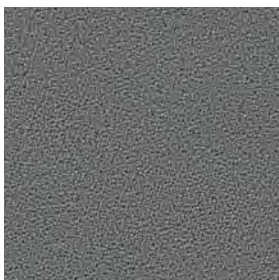
Amber  
JA068



Swart  
JA069



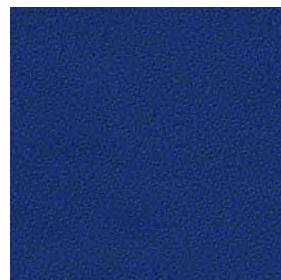
Poison  
JA084



Mushroom  
JA125



Purple  
JA157



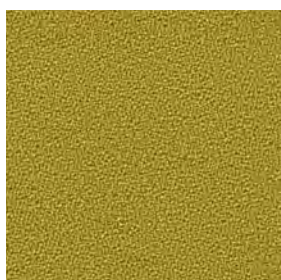
Smurf  
JA159



Tambourine  
JA183



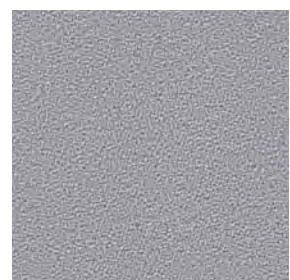
Manta  
JA194



Courgette  
JA201



Ceres  
JA409

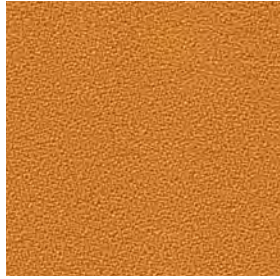


Aristotle  
JA416

Textiles Aquarius



Cherry  
JA419



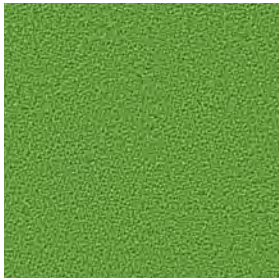
Zippy  
JA426



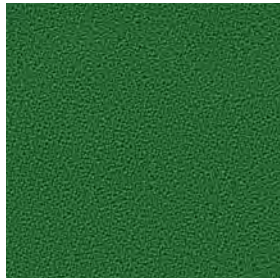
Circus  
JA428



Vico  
JA435



Tombola  
JA442



Chomsky  
JA443



Spinoza  
JA448

# Remix 3

Remix 3 is an elegant upholstery textile distinguished by exceptional depth of colour, designed by Giulio Ridolfo.

Remix 3 looks unicoloured from a distance but reveals subtle details and colour contrasts when viewed close-up. The textile features a tight, minimalistic weave, and derives its lively colour play from a combination of two different *mélange* yarns, which each combine up to three hues.



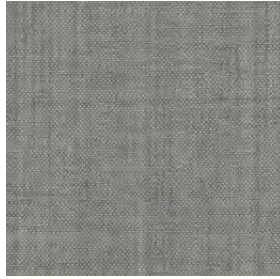
<b>Category</b>	Kvadrat upholstery
<b>Price Group</b>	2
<b>Pattern</b>	Solid
<b>Composition</b>	90% new wool worsted 10% nylon
<b>Width</b>	Approx. 140 cm (Approx. 55")
<b>Weight</b>	420 g/lin. m (13.55 oz/ly)
<b>Repeat</b>	Approx. 0/0 cm (Approx. 0"/0")
<b>Durability</b>	100,000 Martindale
<b>Pilling</b>	4 (ISO 1-5)
<b>Lightfastness</b>	6

<b>Fire Tests</b>	AS/NZS 1530.3 • BS 5852 crib 5 with treatment • BS 5852 part 1 • IMO FTP Code 2010 Part 7 with treatment • IMO FTP Code 2010 Part 8 • NF D 60 013 • NFPA 260 • SN 198 898 5.3 with treatment • UNI 9175 1IM • US Cal. Bull. 117-2013 • EN 1021-1/2 • AS/NZS 3837 class 2 • ÖNORM B1/Q1 • ASTM E84 Class A Unadhered • ASTM E84 Class A Adhered • GB 50222 B1 with treatment (Chinese)
<b>Fastness to rubbing</b>	4 (Dry) 4 (Wet)
<b>Airflow</b>	465 Pa s/m
<b>Absorption</b>	0.55/Class D (Absorption flat) 0.80/Class B (Absorption folded)
<b>Seam Slippage</b>	5 mm (warp), 3 mm (weft)

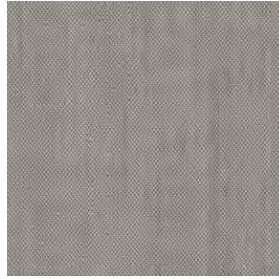
Textiles Remix 3



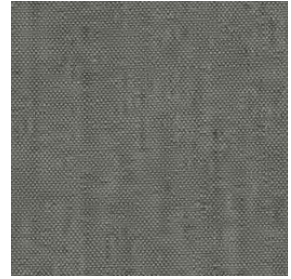
Remix 3  
0113



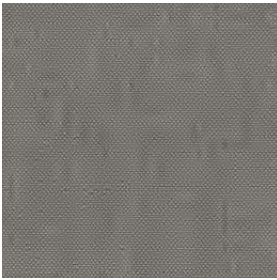
Remix 3  
0123



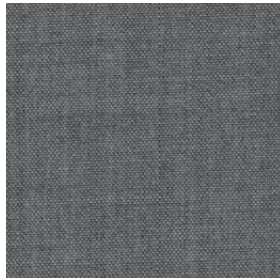
Remix 3  
0126



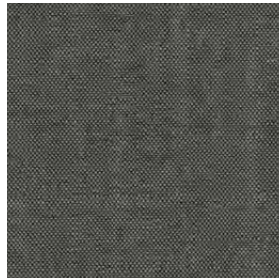
Remix 3  
0133



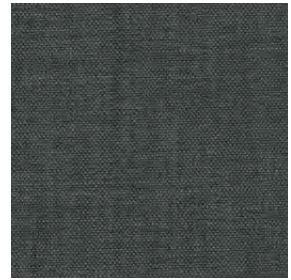
Remix 3  
0136



Remix 3  
0143



Remix 3  
0152



Remix 3  
0163



Remix 3  
0173



Remix 3  
0183



Remix 3  
0196



Remix 3  
0223



Remix 3  
0233



Remix 3  
0242



Remix 3  
0252



Remix 3  
0266



Remix 3  
0276



Remix 3  
0286



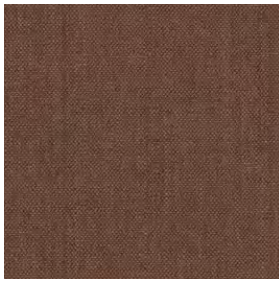
Remix 3  
0296



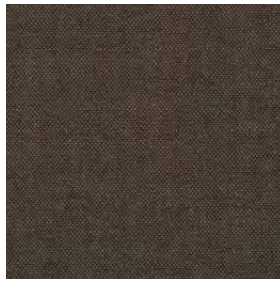
Remix 3  
0326



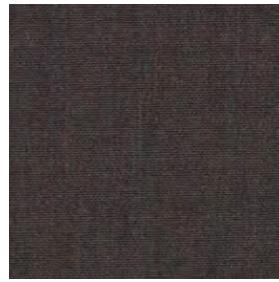
Textiles Remix 3



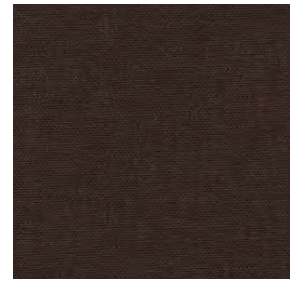
Remix 3  
0346



Remix 3  
0356



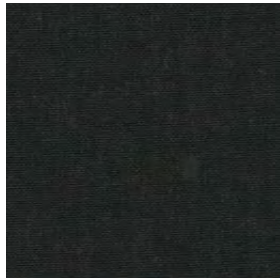
Remix 3  
0362



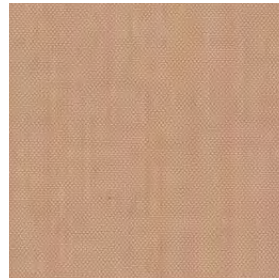
Remix 3  
0373



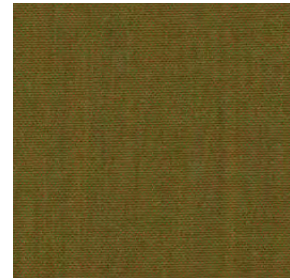
Remix 3  
0383



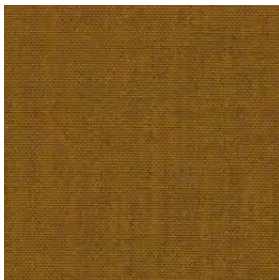
Remix 3  
0393



Remix 3  
0406



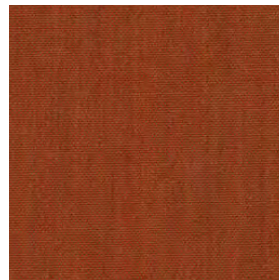
Remix 3  
0412



Remix 3  
0422



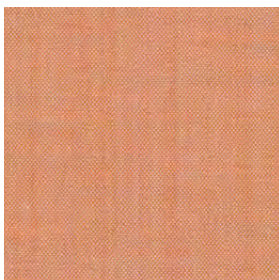
Remix 3  
0433



Remix 3  
0443



Remix 3  
0452



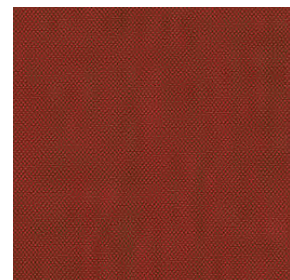
Remix 3  
0516



Remix 3  
0536



Remix 3  
0543



Remix 3  
0566



Remix 3  
0606



Remix 3  
0612

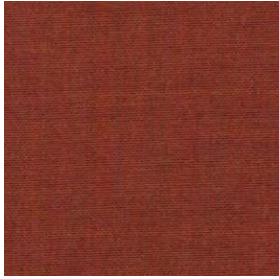


Remix 3  
0632

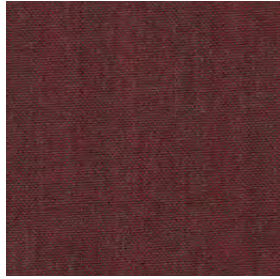


Remix 3  
0643

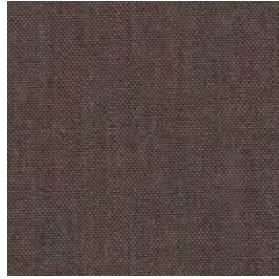
Textiles Remix 3



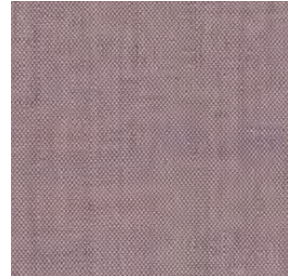
Remix 3  
0653



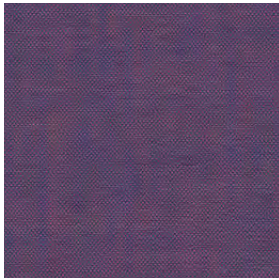
Remix 3  
0662



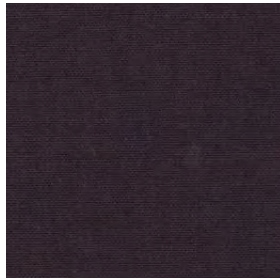
Remix 3  
0672



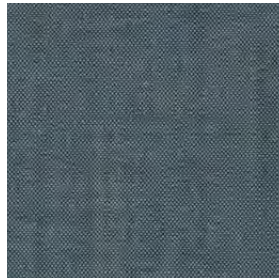
Remix 3  
0682



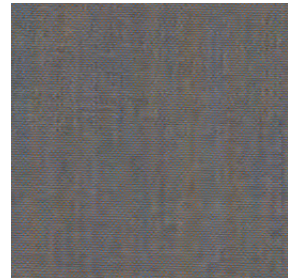
Remix 3  
0686



Remix 3  
0692



Remix 3  
0716



Remix 3  
0722



Remix 3  
0733



Remix 3  
0743



Remix 3  
0753



Remix 3  
0762



Remix 3  
0773



Remix 3  
0783



Remix 3  
0796



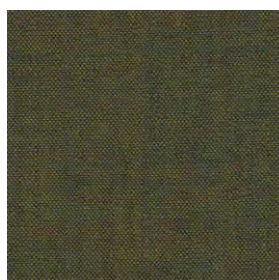
Remix 3  
0816



Remix 3  
0823



Remix 3  
0836



Remix 3  
0842



Remix 3  
0852

Textiles Remix 3



Remix 3  
0866



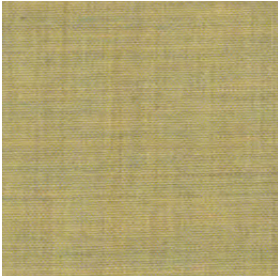
Remix 3  
0873



Remix 3  
0906



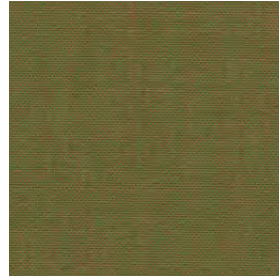
Remix 3  
0912



Remix 3  
0923



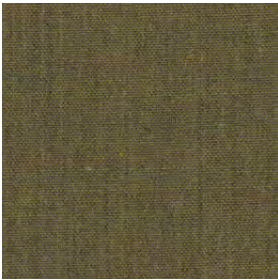
Remix 3  
0933



Remix 3  
0942



Remix 3  
0954



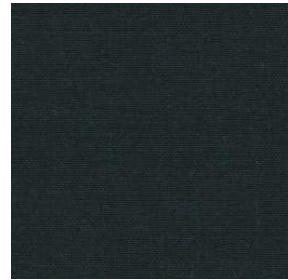
Remix 3  
0962



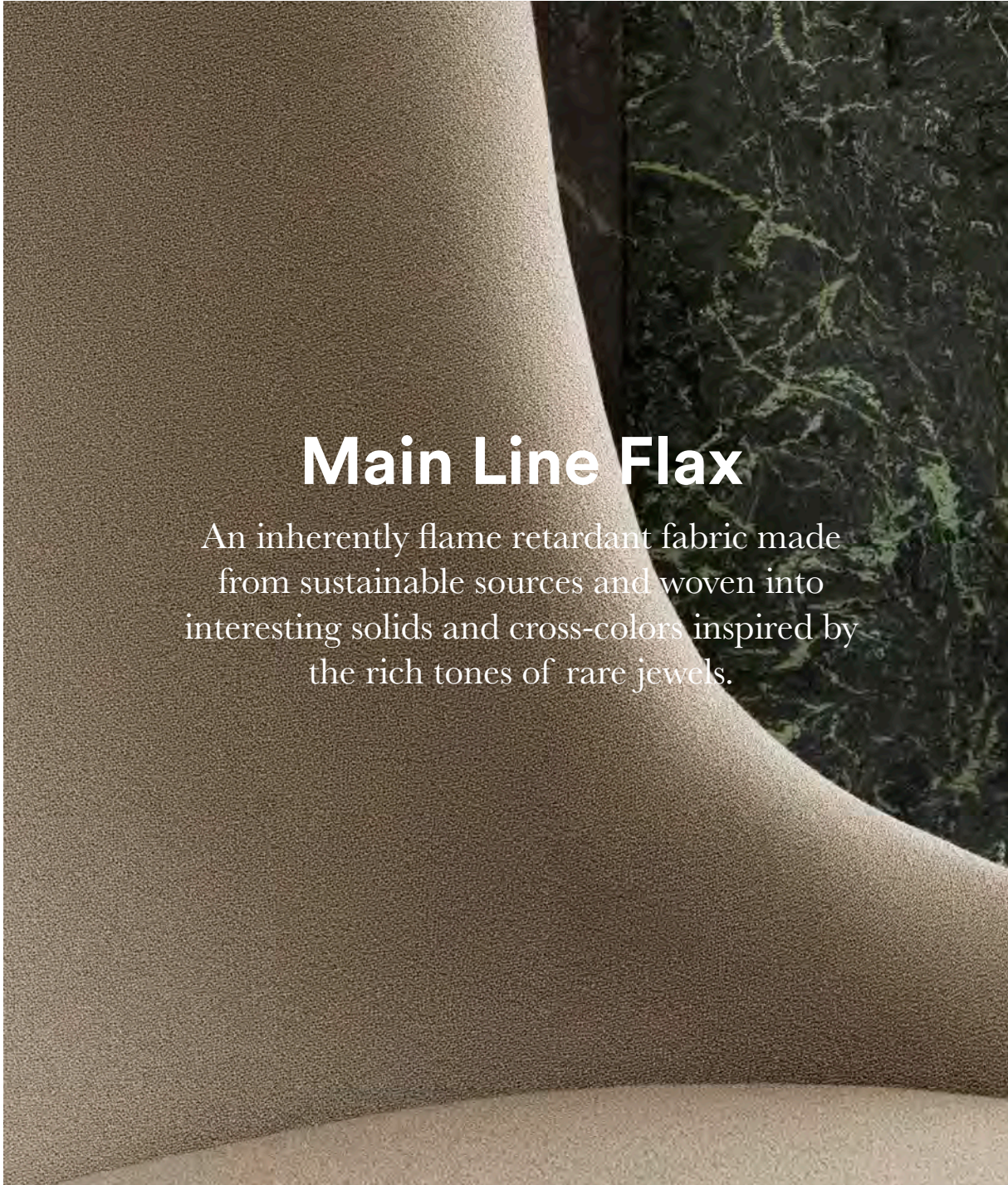
Remix 3  
0973



Remix 3  
0982



Remix 3  
0996

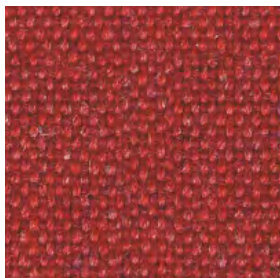


# Main Line Flax

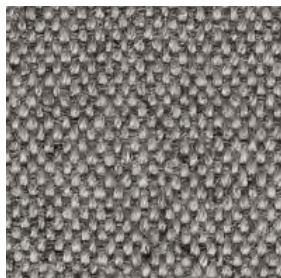
An inherently flame retardant fabric made from sustainable sources and woven into interesting solids and cross-colors inspired by the rich tones of rare jewels.

<b>Manufacturer</b>	Camira	<b>Fastness to rubbing</b>	Wet: 3, Dry: 4 (ISO 105 - X12)
<b>Price Group</b>	2	<b>Light Fastness</b>	5 (ISO 105 - B02)
<b>Composition</b>	70% virgin wool, 30% flax	<b>Flammability</b>	EN 1021-1&2 Cigarette & Match BS 7176 Low Hazard BS 5852 Ignition Source 5 BS 7176 Medium Hazard NF D 60-013 ÖNORM B 3825 & A 3800-1 (58kg/m <sup>3</sup> CMHR Foam) UNI 9175 Classe 1 IM BS 5867-2: Type B Curtains & Drapes
<b>Environment</b>	Certified to the EU Ecolabel Certified to Indoor Advantage™ "Gold" Rapidly renewable and compostable Made from wool and bast fiber		
<b>Martindale</b>	Heavy duty / 10 year guarantee. Independently certified to ≥50.000 Martindale cycles		
<b>Weight</b>	437 g/m <sup>2</sup> ±5%		

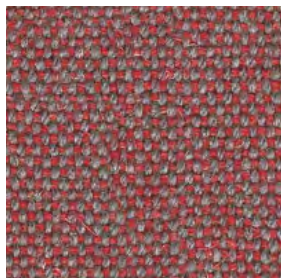
Textiles Main Line Flax



**Aldgate**  
MLF01



**Archway**  
MLF02



**Barbican**  
MLF03



**Holborn**  
MLF05



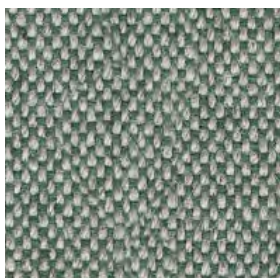
**Kilburn**  
MLF06



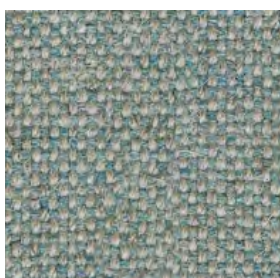
**Kensington**  
MLF07



**Lambeth**  
MLF08



**Monument**  
MLF09



**Newbury**  
MLF10



**Morden**  
MLF12



**Leyton**  
MLF13



**Parsons**  
MLF14



**Stockwell**  
MLF15



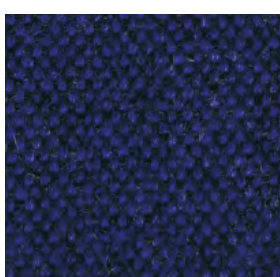
**Temple**  
MLF16



**Tooting**  
MLF17



**Tufnell**  
MLF18



**Victoria**  
MLF19



**Upminster**  
MLF20

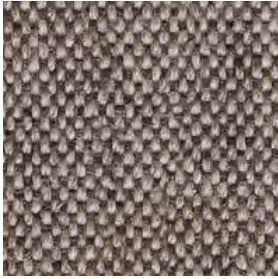


**Waterloo**  
MLF21



**Westminster**  
MLF22

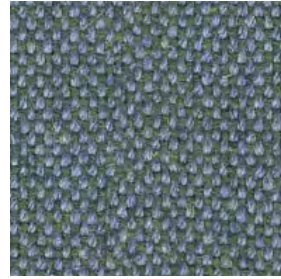
Textiles Main Line Flax



**Bank**  
MLF23



**Bayswater**  
MLF24



**Bethnal**  
MLF25



**Camden**  
MLF26



**Edgware**  
MLF28



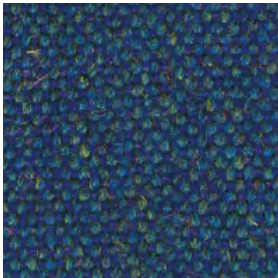
**Farringdon**  
MLF29



**Goldhawk**  
MLF31



**Greenford**  
MLF32



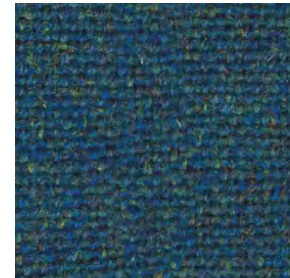
**Pimlico**  
MLF34



**Brompton**  
MLF35



**Tower**  
MLF36



**Stanmore**  
MLF37



**Northfields**  
MLF40



**Alperton**  
MLF43



**Balham**  
MLF44



**Barking**  
MLF45



**Blackwall**  
MLF46



**Brixton**  
MLF47



**Chigwell**  
MLF48



**Clapham**  
MLF49

Textiles Main Line Flax



**Embarkment**  
MLF50



**Epping**  
MLF51



**Greenwich**  
MLF52



**Hampstead**  
MLF53



**Harrow**  
MLF54



**Hornchurch**  
MLF55



**Kentish**  
MLF56



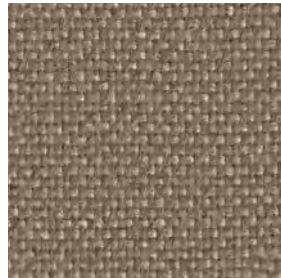
**Moorgate**  
MLF57



**Perivale**  
MLF59



**Pinner**  
MLF60



**Redbridge**  
MLF61



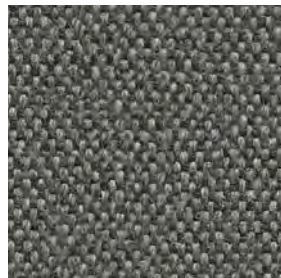
**Richmond**  
MLF62



**Shadwell**  
MLF63



**Stratford**  
MLF64



**Watford**  
MLF65



**Whitechapel**  
MLF66



**Woodford**  
MLF67



# Synergy

A soft handle wool blend fabric featuring exquisite fiber dyed shades and sumptuous piece dyed solids.

<b>Manufacturer</b>	Camira	<b>Fastness to rubbing</b>	Wet: 3, Dry: 4 (ISO 105 - X12)
<b>Price Group</b>	2	<b>Light Fastness</b>	5 (ISO 105 - B02)
<b>Composition</b>	95% virgin wool, 5% polyamide	<b>Flammability</b>	EN 1021 - 1&2 Cigarette & Match BS 7176 Low Hazard NF D 60-013 ÖNORM B 3825 & A 3800-1 (58 kg/m <sup>3</sup> CMHR Foam) UNI 9175 Classe 1 IM EN 13501-1 Adhered Class D, s1, d0 EN 13501-1 Un-adhered Class E, s2, d0 BS 5852 Ignition Source 5 when FR treated BS 7176 Medium Hazard when FR treated EN 13501-1 Adhered Class B, s1, d0 when FR treated EN 13501-1 Un-adhered Class D, s2, d0 when FR treated BS 5867-2: Type B Curtains & Drapes when FR treated
<b>Environment</b>	Certified to the EU Ecolabel Certified to Indoor Advantage™ "Gold"		
<b>Abrasion resistance</b>	Heavy duty / 10 year guarantee. Independently certified to ≥100.000 Martindale cycles		
<b>Weight</b>	400 g/m <sup>2</sup> ±5%		



Textiles Synergy



**Venture**  
LDS05



**Fate**  
LDS07



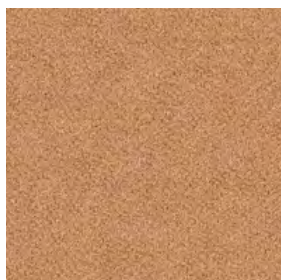
**Serendipity**  
LDS08



**Partner**  
LDS16



**Mix**  
LDS17



**Loop**  
LDS18



**Chain**  
LDS19



**Level**  
LDS20



**Team**  
LDS21



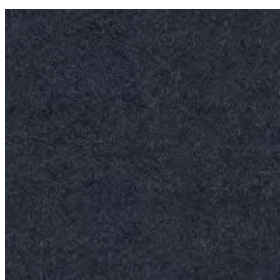
**Frame**  
LDS22



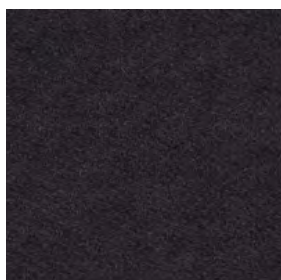
**Bracket**  
LDS23



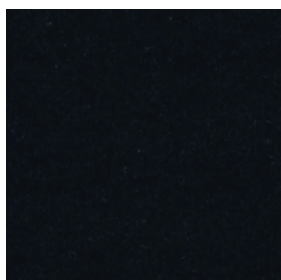
**Bond**  
LDS24



**Compound**  
LDS25



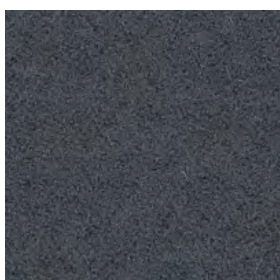
**Bridge**  
LDS26



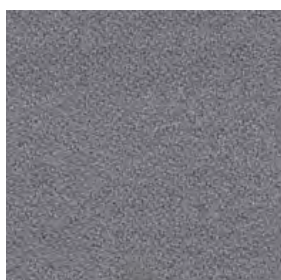
**Seek**  
LDS27



**Lateral**  
LDS28



**Hook**  
LDS29



**Pair**  
LDS31



**Affix**  
LDS32

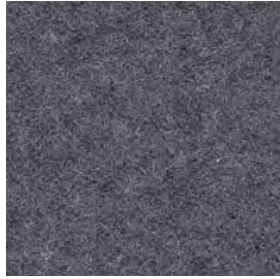


**Tag**  
LDS33

Textiles Synergy



**Wed**  
LDS34



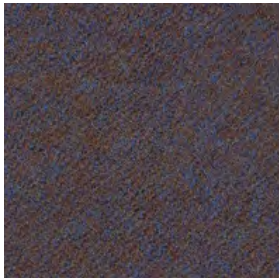
**Chemistry**  
LDS35



**Medley**  
LDS36



**Linea**  
LDS37



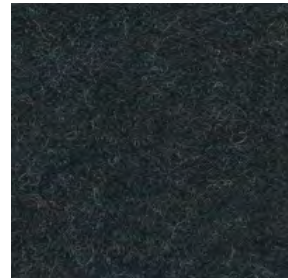
**Unity**  
LDS38



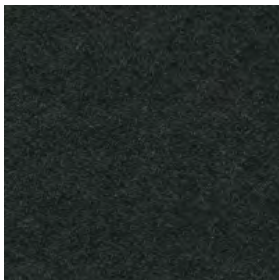
**Collective**  
LDS39



**Co-operate**  
LDS40



**Couple**  
LDS41



**Intertwine**  
LDS42



**Marry**  
LDS43



**Relate**  
LDS44



**Summon**  
LDS45



**Gather**  
LDS46



**Integrate**  
LDS47



**Interfuse**  
LDS48



**Append**  
LDS49



**League**  
LDS50



**Kindness**  
LDS51

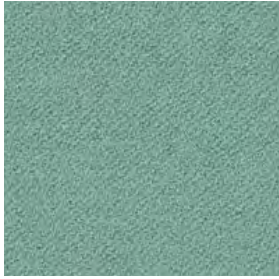


**Comply**  
LDS52

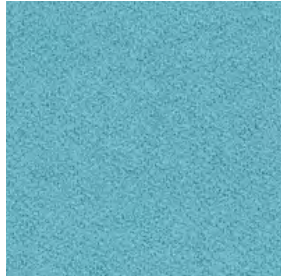


**Pact**  
LDS53

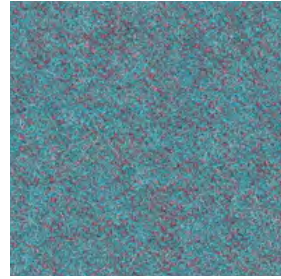
# Textiles Synergy



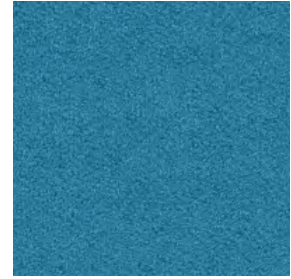
**Regard**  
LDS54



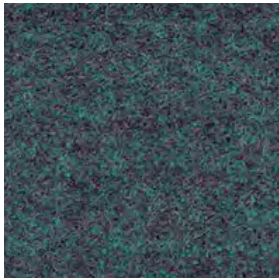
**Support**  
LDS55



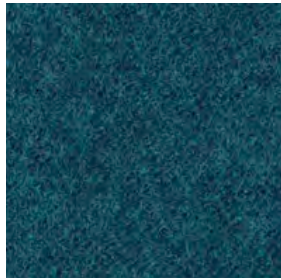
**Kinship**  
LDS56



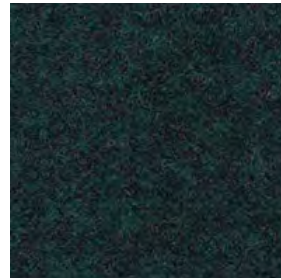
**Engage**  
LDS57



**Family**  
LDS58



**Group**  
LDS59



**Accord**  
LDS60



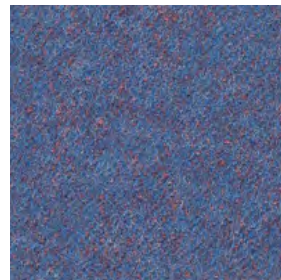
**Assemble**  
LDS61



**Alike**  
LDS62



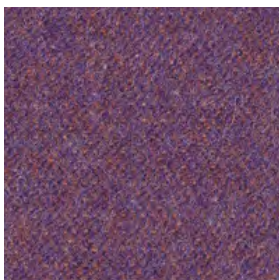
**Guild**  
LDS63



**Order**  
LDS64



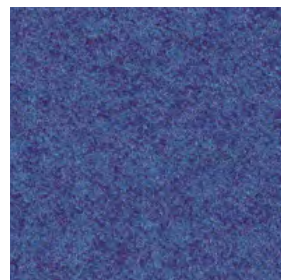
**Huddle**  
LDS65



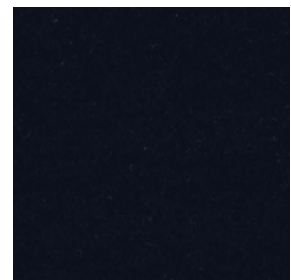
**Fellowship**  
LDS66



**Warmth**  
LDS67



**Collaborate**  
LDS68



**Sync**  
LDS69



**Together**  
LDS70



**Open**  
LDS71



**Compose**  
LDS72

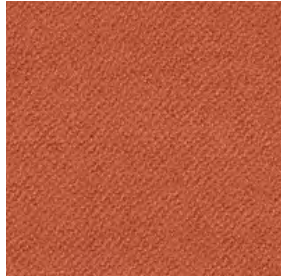


**Work**  
LDS73

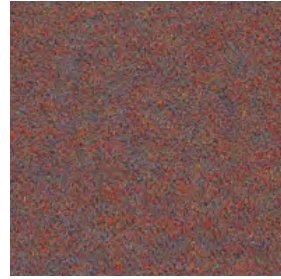
Textiles Synergy



**Affinity**  
LDS74



**Contribution**  
LDS75



**Success**  
LDS76



**Combo**  
LDS77



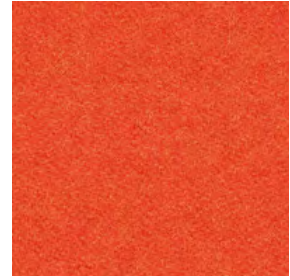
**Cordial**  
LDS78



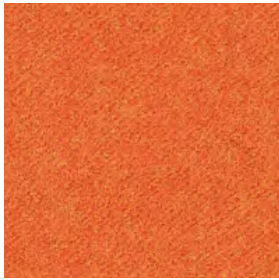
**Amiable**  
LDS79



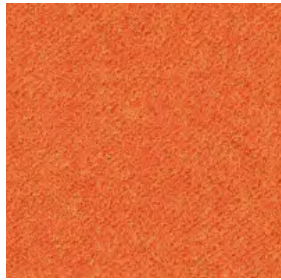
**Apt**  
LDS80



**Similar**  
LDS81



**Likeness**  
LDS82



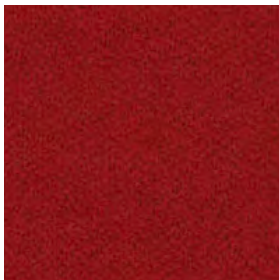
**Congregate**  
LDS83



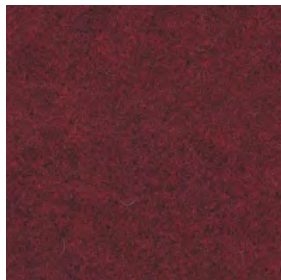
**Mutual**  
LDS84



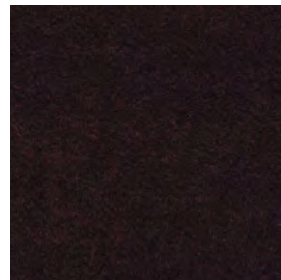
**Share**  
LDS85



**Global**  
LDS86



**Values**  
LDS87



**Process**  
LDS88



Hyg lounge chair low in Camira Synergy/Bracket  
with oak lacquered legs

# Canvas 2

Canvas is a vibrant woollen upholstery textile created by Giulio Ridolfo.



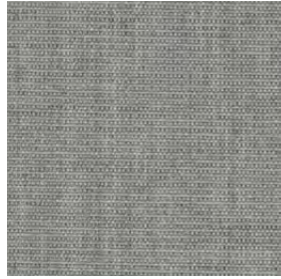
<b>Category</b>	Kvadrat upholstery
<b>Price Group</b>	3
<b>Pattern</b>	Solid
<b>Composition</b>	90% new wool worsted 10% nylon
<b>Width</b>	Approx. 140 cm (Approx. 55")
<b>Weight</b>	480 g/lin. m (15.48 oz/ly)
<b>Repeat</b>	Approx. 0/0 cm (Approx. 0"/0")
<b>Durability</b>	100,000 Martindale
<b>Pilling</b>	4 (ISO 1-5)
<b>Lightfastness</b>	5-6

<b>Fire Tests</b>	AS/NZS 1530.3 • BS 5852 crib 5 with treatment • BS 5852 part 1 • IMO FTP Code 2010 Part 8 • NF D 60 013 • NFPA 260 • SN 198 898 5.3 with treatment • UNI 9175 1IM • US Cal. Bull. 117-2013 • EN 1021-1/2 • ÖNORM B1/Q1 • ASTM E84 Class A Adhered • ASTM E84 Class A Unadhered
<b>Fastness to rubbing</b>	4-5 (Dry) 4-5 (Wet)
<b>Airflow</b>	849 Pa s/m
<b>Absorption</b>	0.60/Class C (Absorption flat) 0.80/Class B (Absorption folded)
<b>Seam Slippage</b>	3.5 mm (warp), 2 mm (weft)

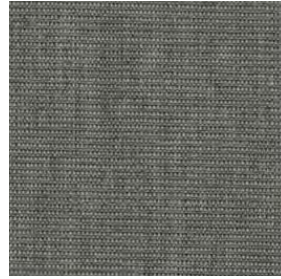
Textiles Canvas 2



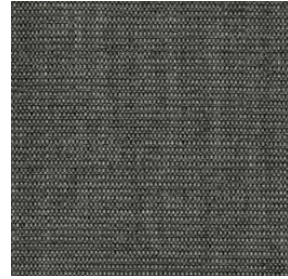
Canvas 2  
0114



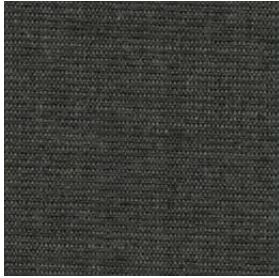
Canvas 2  
0124



Canvas 2  
0134



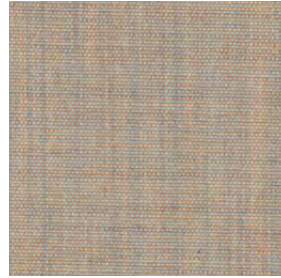
Canvas 2  
0154



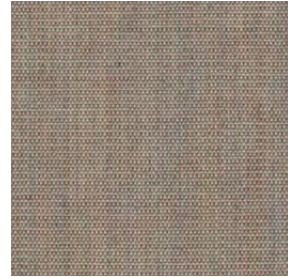
Canvas 2  
0174



Canvas 2  
0216



Canvas 2  
0224



Canvas 2  
0244



Canvas 2  
0254



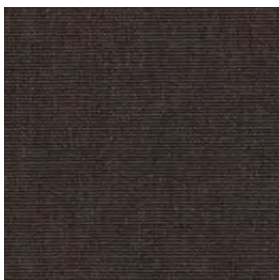
Canvas 2  
0264



Canvas 2  
0356



Canvas 2  
0364



Canvas 2  
0374



Canvas 2  
0414



Canvas 2  
0424



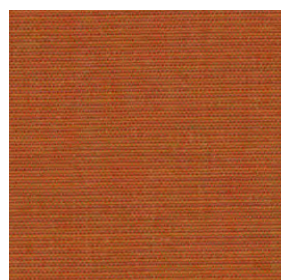
Canvas 2  
0446



Canvas 2  
0454



Canvas 2  
0546

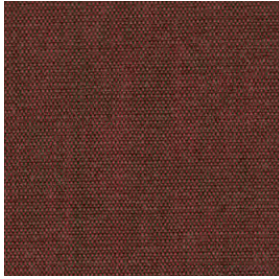


Canvas 2  
0556

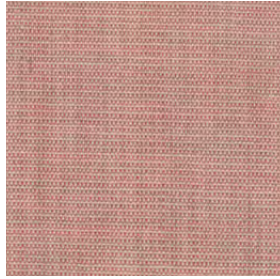


Canvas 2  
0566

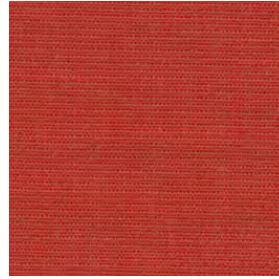
Textiles Canvas 2



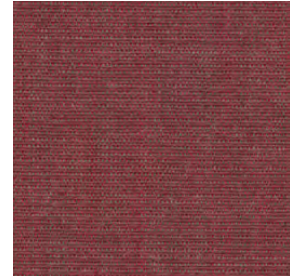
Canvas 2  
0576



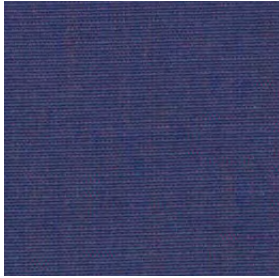
Canvas 2  
0614



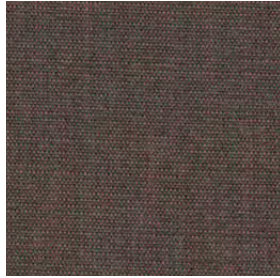
Canvas 2  
0644



Canvas 2  
0654



Canvas 2  
0666



Canvas 2  
0674



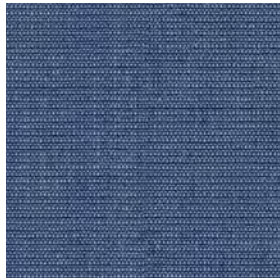
Canvas 2  
0684



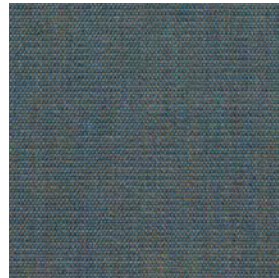
Canvas 2  
0694



Canvas 2  
0716



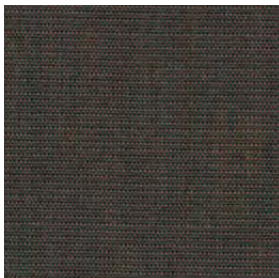
Canvas 2  
0726



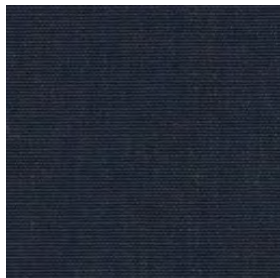
Canvas 2  
0734



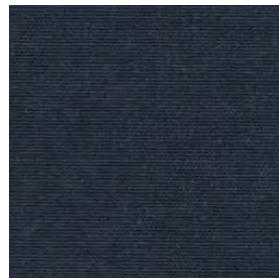
Canvas 2  
0746



Canvas 2  
0764



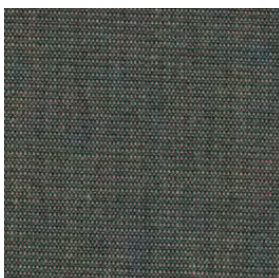
Canvas 2  
0786



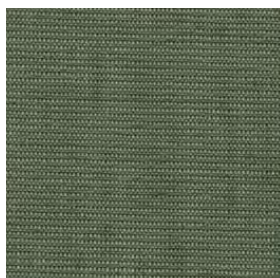
Canvas 2  
0794



Canvas 2  
0836



Canvas 2  
0854



Canvas 2  
0926



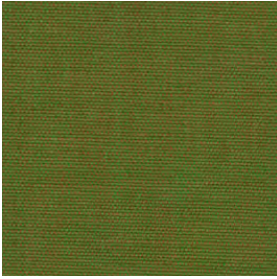
Canvas 2  
0936



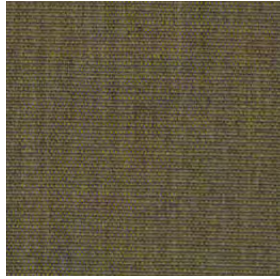
Canvas 2  
0946



Textiles Canvas 2



Canvas 2  
0954



Canvas 2  
0964



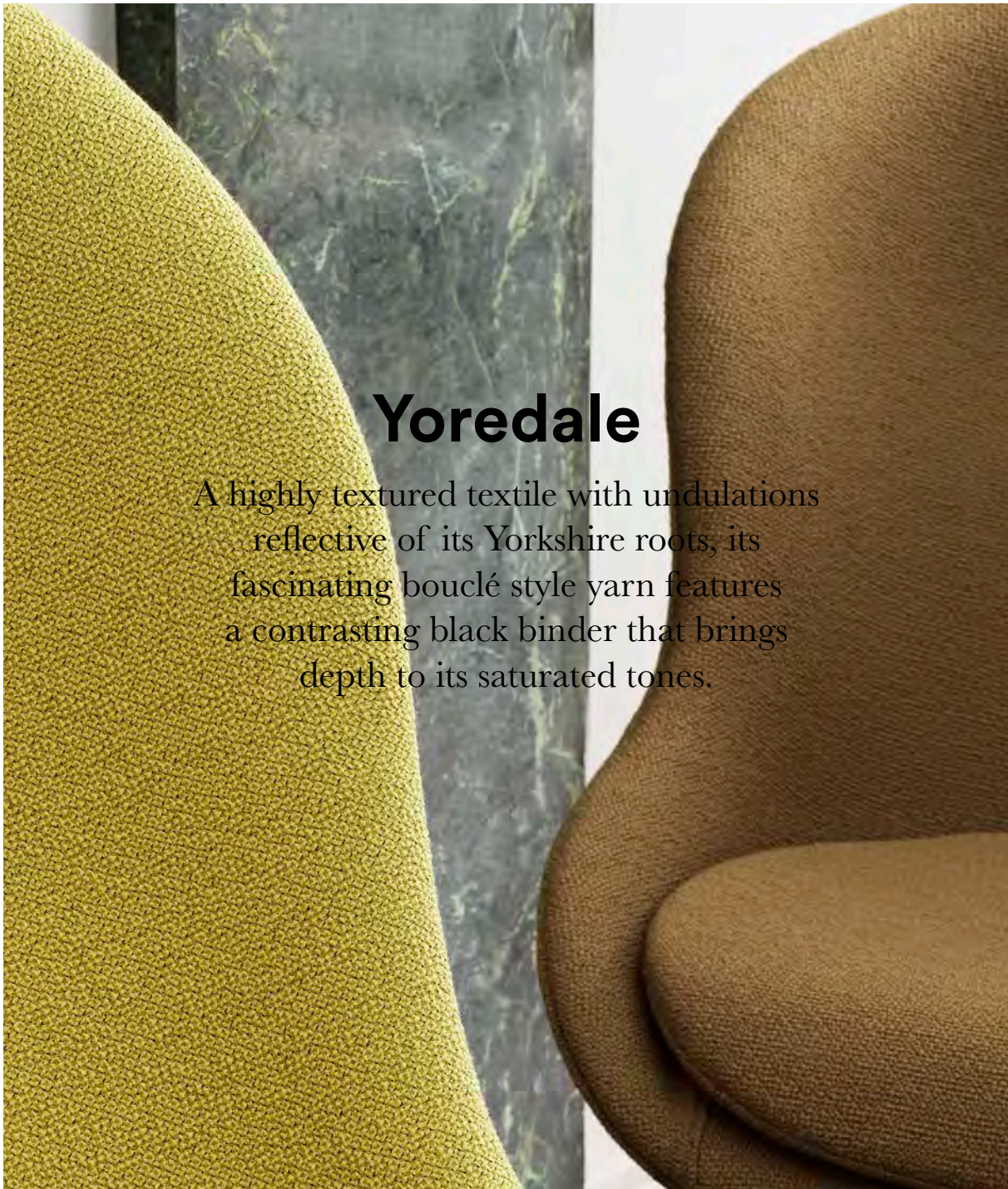
Canvas 2  
0974



Canvas 2  
0984



Canvas 2  
0996

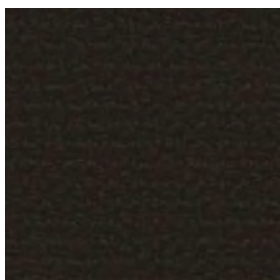


# Yoredale

A highly textured textile with undulations reflective of its Yorkshire roots, its fascinating bouclé style yarn features a contrasting black binder that brings depth to its saturated tones.

<b>Manufacturer</b>	Camira	<b>Fastness to rubbing</b>	Wet: 4, Dry: 4 (ISO 105 - X12)
<b>Price Group</b>	3	<b>Light Fastness</b>	5 (ISO 105 - B02)
<b>Composition</b>	95% wool, 3% polyester, 2% polyamide	<b>Flammability</b>	EN 1021 - 1&2 Cigarette & Match BS 7176 Low Hazard ÖNORM B 3825 & A 3800-1 (58kg/m <sup>3</sup> CMHR Foam) UNI 9175 Classe 1 IM BS 5852 Ignition Source 5 when FR treated BS 7176 Medium Hazard when FR treated
<b>Environment</b>	Certified to Indoor Advantage™ "Gold" Nonmetallic dyestuffs		
<b>Abrasion resistance</b>	Heavy duty / 10 year guarantee. Independently certified to ≥50.000 Martindale cycles		
<b>Weight</b>	700 g/m <sup>2</sup> ±5%		

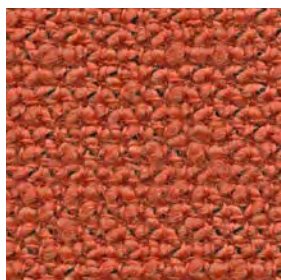
Textiles Yoredale



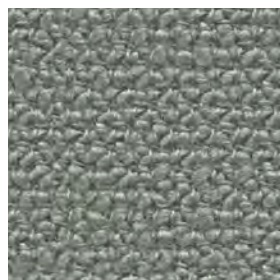
**Buckden**  
UDA01



**Kidstone**  
UDA02



**Askrigg**  
UDA03



**Hardraw**  
UDA04



**Simonstone**  
UDA05



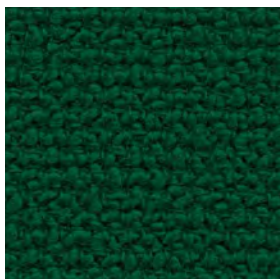
**Thoralby**  
UDA06



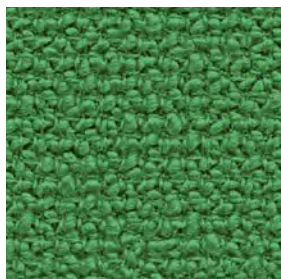
**Carperby**  
UDA07



**Gayle**  
UDA08



**Thornton**  
UDA09



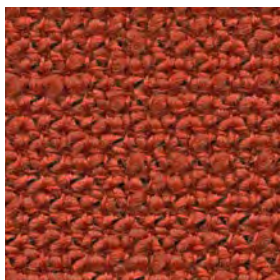
**Cray**  
UDA10



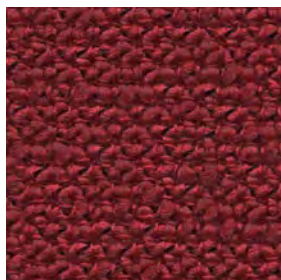
**Fossdale**  
UDA11



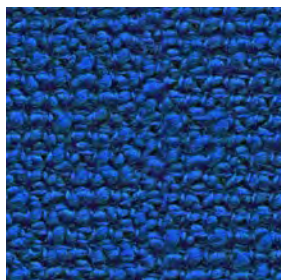
**Woodale**  
UDA12



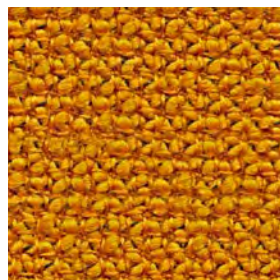
**Walden**  
UDA13



**Sedbusk**  
UDA14



**Litton**  
UDA15



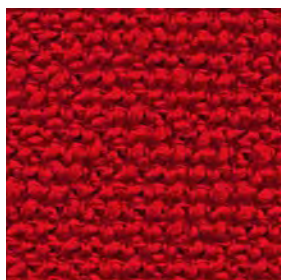
**Nidd**  
UDA16



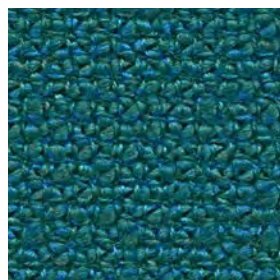
**Ribble**  
UDA17



**Wharfe**  
UDA18

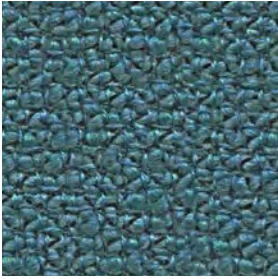


**Ripley**  
UDA19

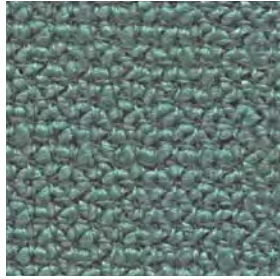


**Darley**  
UDA20

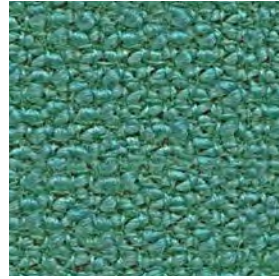
**Textiles Yoredale**



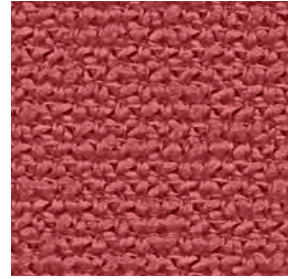
**Dacre**  
UDA21



**Burnsall**  
UDA22



**Cracoe**  
UDA23



**Woden**  
UDA24



**Leyburn**  
UDA25

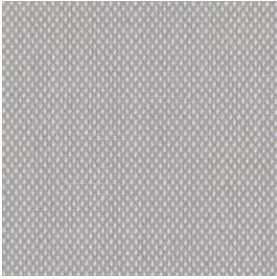
# Steelcut Trio 3

The three-dimensional surface of Steelcut Trio resembles small pyramids or steel points. Despite the complexity of the textile's innovative weave, it has a simple, precise expression. Steelcut Trio is yarn-dyed and made from 3 differently coloured yarns.

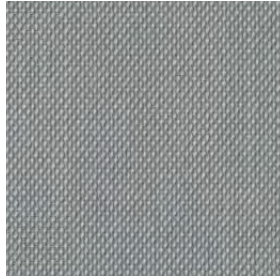
<b>Category</b>	Kvadrat upholstery
<b>Price Group</b>	4
<b>Pattern</b>	Solid
<b>Composition</b>	90% new wool worsted 10% nylon
<b>Width</b>	Approx. 140 cm (Approx. 55")
<b>Weight</b>	770 g/lin. m (24.84 oz/ly)
<b>Repeat</b>	Approx. 0/0 cm (Approx. 0"/0")
<b>Durability</b>	100,000 Martindale
<b>Pilling</b>	4 (ISO 1-5)
<b>Lightfastness</b>	6-7

<b>Fire Tests</b>	AS/NZS 1530.3 • BS 5852 crib 5 with treatment • BS 5852 part 1 • IMO FTP Code 2010 Part 8 • NF D 60 013 • NFPA 260 • SN 198 898 5.3 with treatment • UNI 9175 1IM • US Cal. Bull. 117-2013 • EN 1021-1/2 • ASTM E84 Class B Unadhered • ASTM E84 Class B Adhered • ÖNORM B1/Q1 • AS/NZS 3837 class 2 • GB 50222 B1 with treatment (Chinese)
<b>Fastness to rubbing</b>	4-5 (Dry) 4-5 (Wet)
<b>Airflow</b>	910 Pa s/m
<b>Absorption</b>	0.70/Class C (Absorption flat) 0.95/Class A (Absorption folded)
<b>Seam Slippage</b>	3.5 mm (warp), 2 mm (weft)

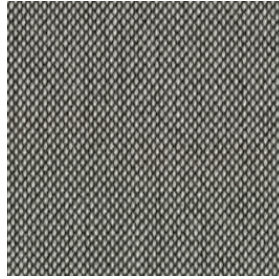
Textiles Steelcut Trio 3



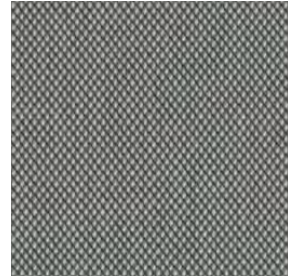
Steelcut Trio 3  
0105



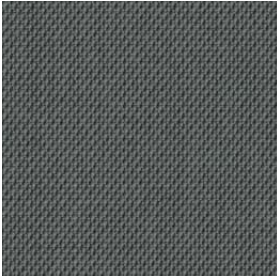
Steelcut Trio 3  
0113



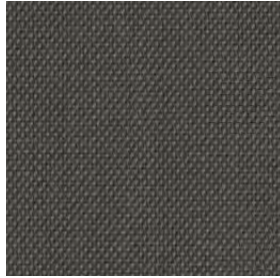
Steelcut Trio 3  
0124



Steelcut Trio 3  
0133



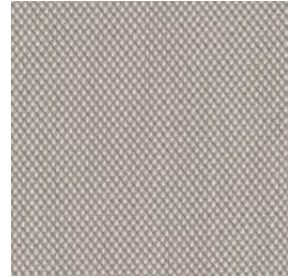
Steelcut Trio 3  
0153



Steelcut Trio 3  
0176



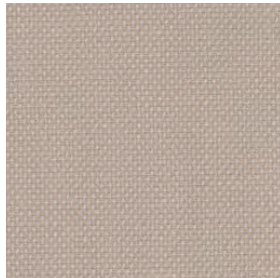
Steelcut Trio 3  
0195



Steelcut Trio 3  
0205



Steelcut Trio 3  
0213



Steelcut Trio 3  
0226



Steelcut Trio 3  
0236



Steelcut Trio 3  
0246



Steelcut Trio 3  
0253



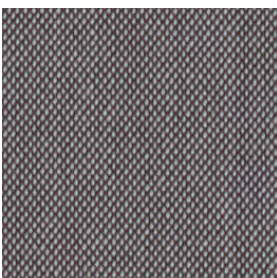
Steelcut Trio 3  
0266



Steelcut Trio 3  
0276



Steelcut Trio 3  
0283



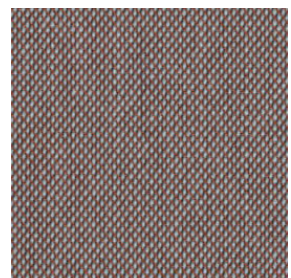
Steelcut Trio 3  
0336



Steelcut Trio 3  
0376

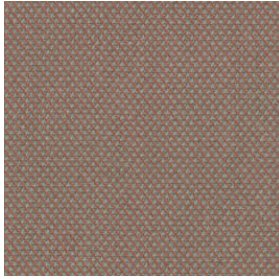


Steelcut Trio 3  
0383

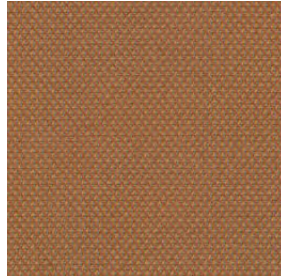


Steelcut Trio 3  
0416

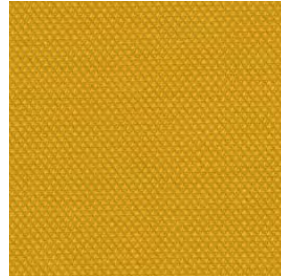
Textiles Steelcut Trio 3



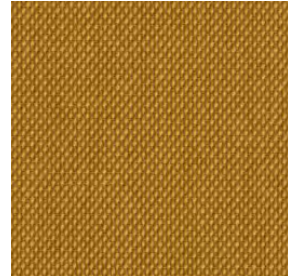
Steelcut Trio 3  
0426



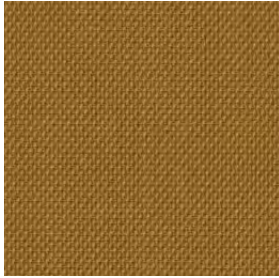
Steelcut Trio 3  
0436



Steelcut Trio 3  
0446



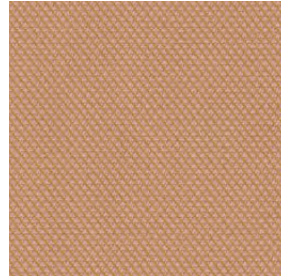
Steelcut Trio 3  
0453



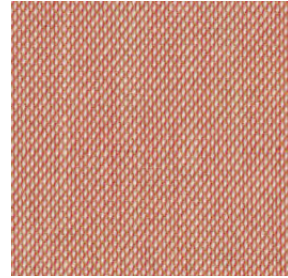
Steelcut Trio 3  
0466



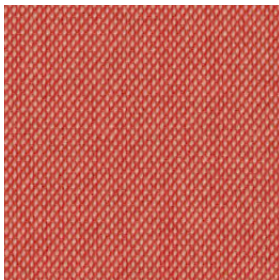
Steelcut Trio 3  
0476



Steelcut Trio 3  
0506



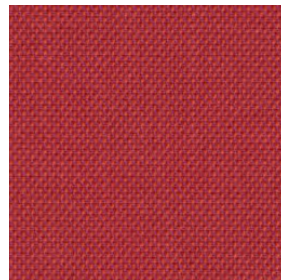
Steelcut Trio 3  
0515



Steelcut Trio 3  
0526



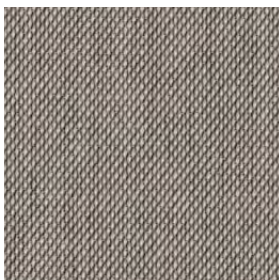
Steelcut Trio 3  
0533



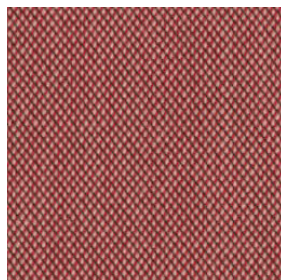
Steelcut Trio 3  
0553



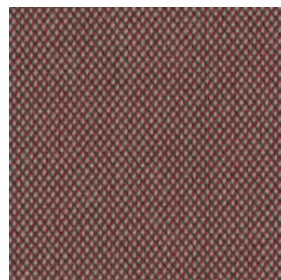
Steelcut Trio 3  
0576



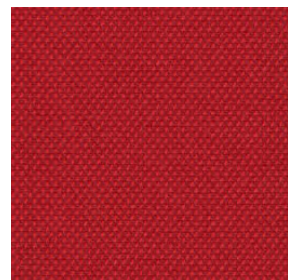
Steelcut Trio 3  
0616



Steelcut Trio 3  
0636



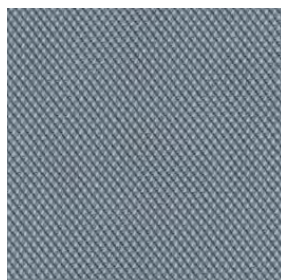
Steelcut Trio 3  
0645



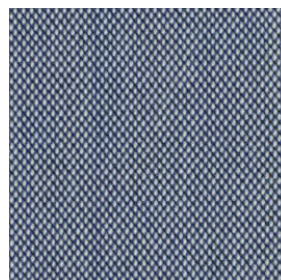
Steelcut Trio 3  
0666



Steelcut Trio 3  
0686



Steelcut Trio 3  
0713

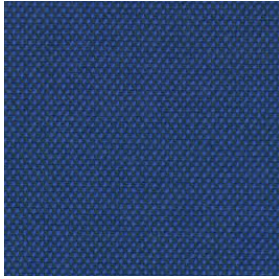


Steelcut Trio 3  
0716



Steelcut Trio 3  
0746

Textiles Steelcut Trio 3



Steelcut Trio 3  
0746



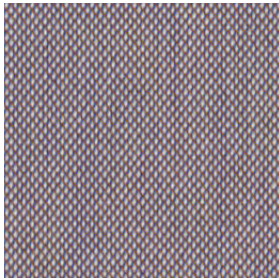
Steelcut Trio 3  
0756



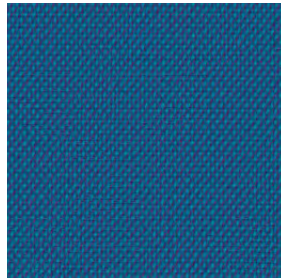
Steelcut Trio 3  
0776



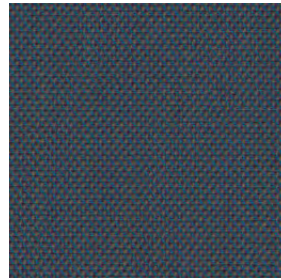
Steelcut Trio 3  
0796



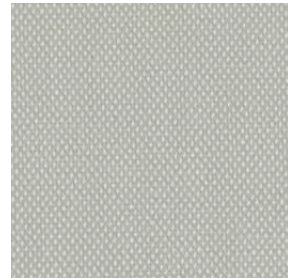
Steelcut Trio 3  
0806



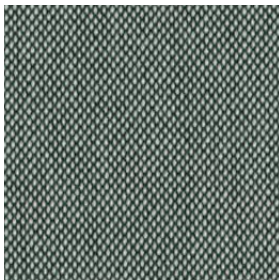
Steelcut Trio 3  
0865



Steelcut Trio 3  
0883



Steelcut Trio 3  
0906



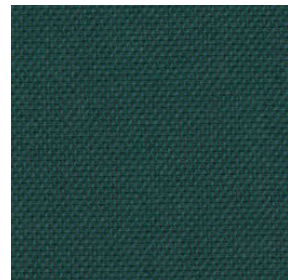
Steelcut Trio 3  
0916



Steelcut Trio 3  
0946



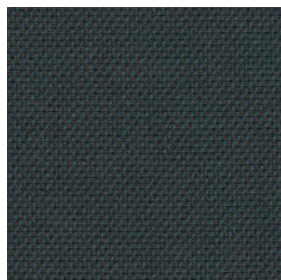
Steelcut Trio 3  
0966



Steelcut Trio 3  
0976

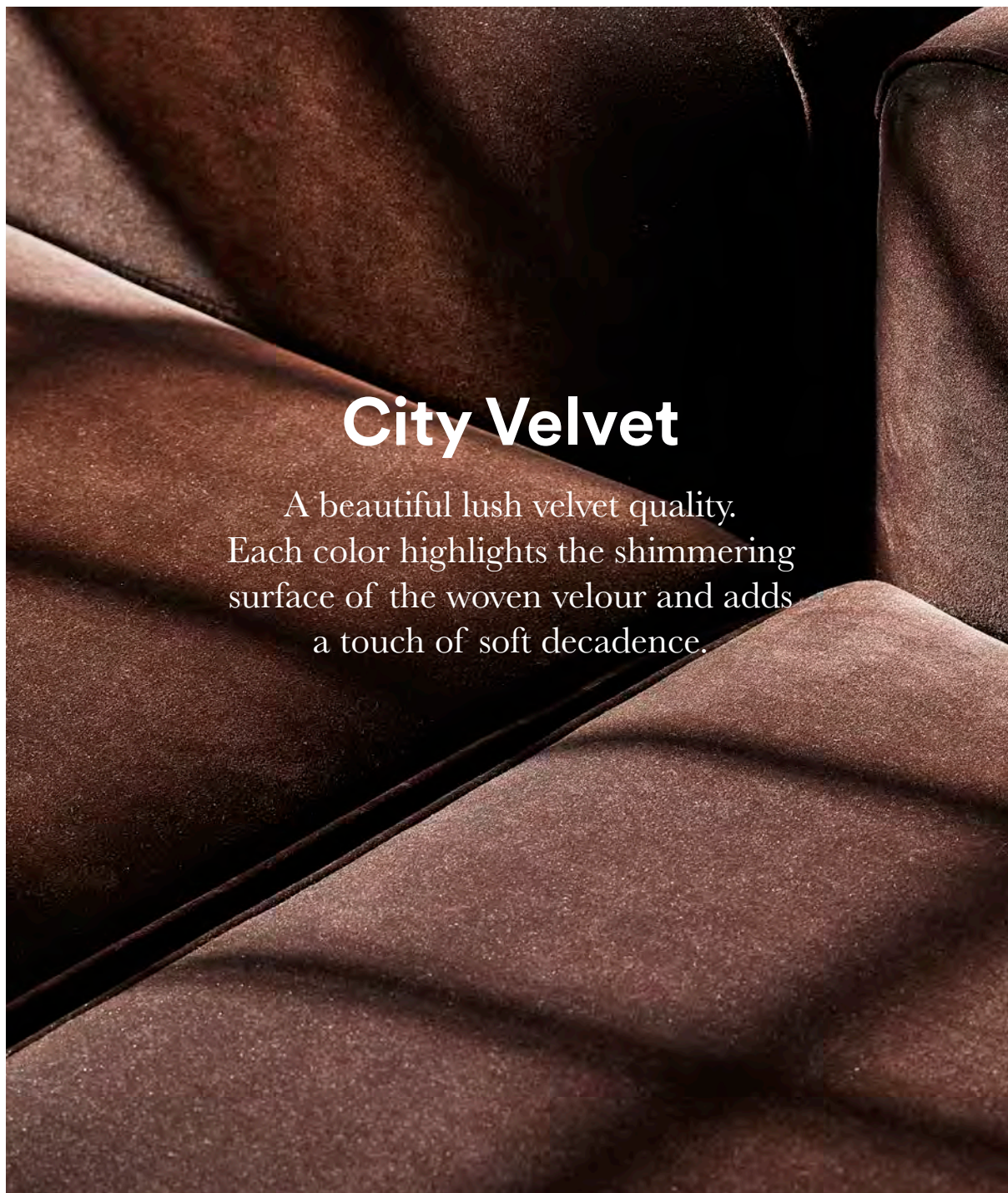


Steelcut Trio 3  
0983



Steelcut Trio 3  
0996



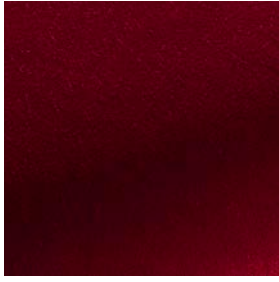


# City Velvet

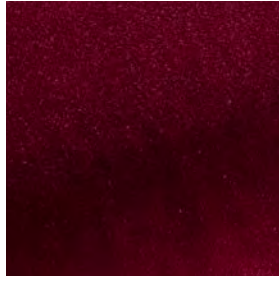
A beautiful lush velvet quality.  
Each color highlights the shimmering  
surface of the woven velour and adds  
a touch of soft decadence.

<b>Manufacturer</b>	JAB
<b>Price Group</b>	4
<b>Composition</b>	Pile: 100% polyester Groundmaterial: 100% polyester
<b>Abrasion resistance</b>	100.000 Martindale
<b>Weight</b>	440 g/m <sup>2</sup>
<b>Light Fastness</b>	3-5

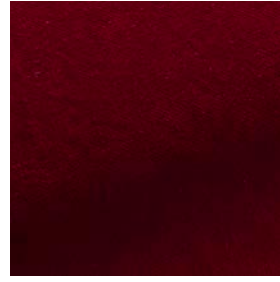
Textiles City Velvet



CA7832/010



CA7832/011



CA7832/012



CA7832/013



CA7832/014



CA7832/015



CA7832/020



CA7832/021



CA7832/022



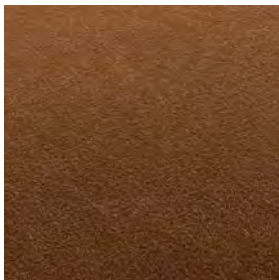
CA7832/023



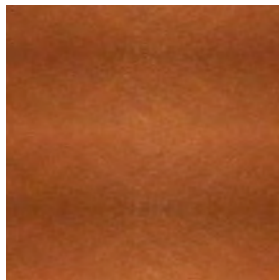
CA7832/024



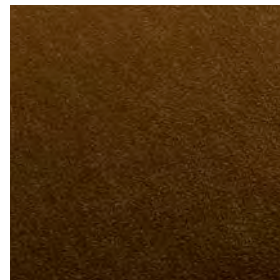
CA7832/025



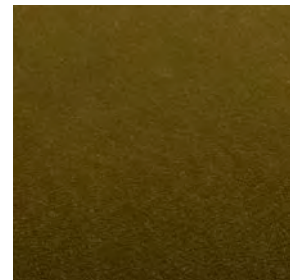
CA7832/026



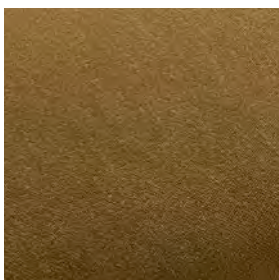
CA7832/027



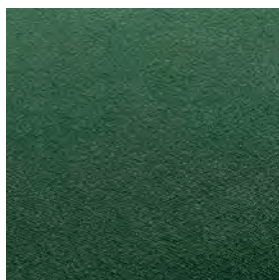
CA7832/030



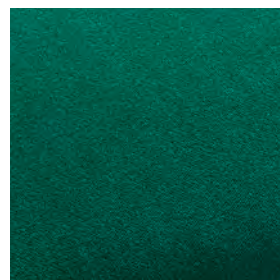
CA7832/031



CA7832/032



CA7832/033

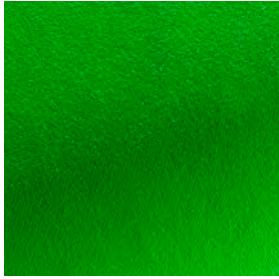


CA7832/034

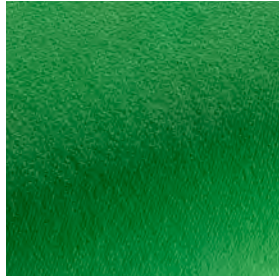


CA7832/035

Textiles City Velvet



CA7832/036



CA7832/037



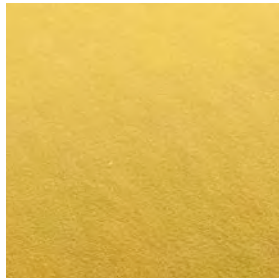
CA7832/038



CA7832/039



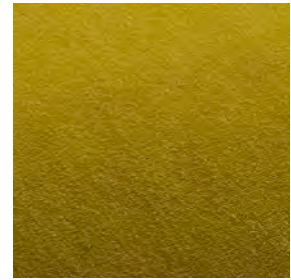
CA7832/040



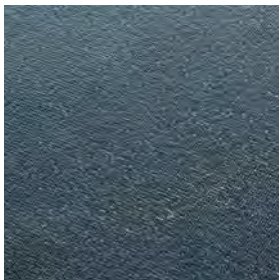
CA7832/041



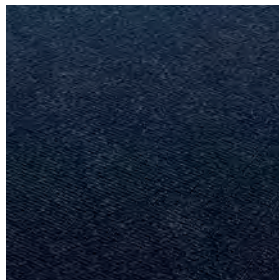
CA7832/042



CA7832/043



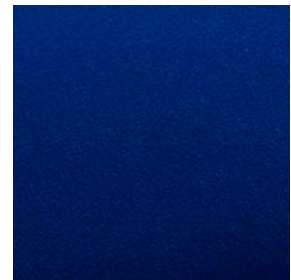
CA7832/050



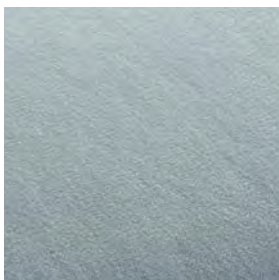
CA7832/051



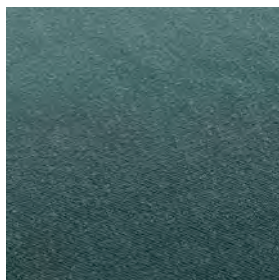
CA7832/052



CA7832/053



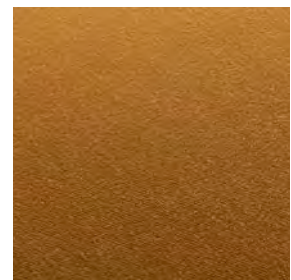
CA7832/055



CA7832/056



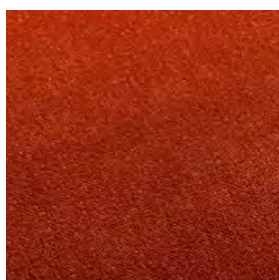
CA7832/058



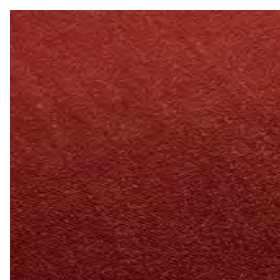
CA7832/060



CA7832/061



CA7832/062



CA7832/063



CA7832/064

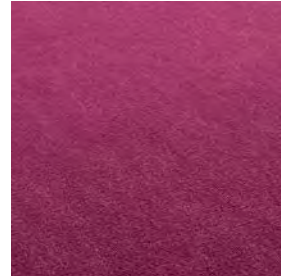
Textiles City Velvet



CA7832/065



CA7832/066



CA7832/067



CA7832/068



CA7832/069



CA7832/070



CA7832/071



CA7832/072



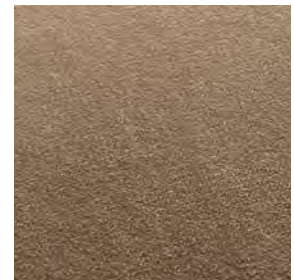
CA7832/073



CA7832/074



CA7832/075



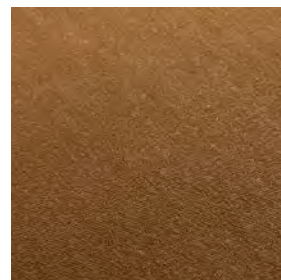
CA7832/076



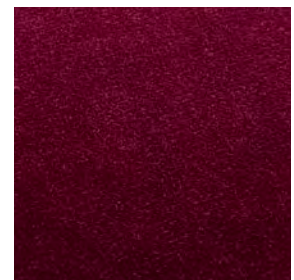
CA7832/077



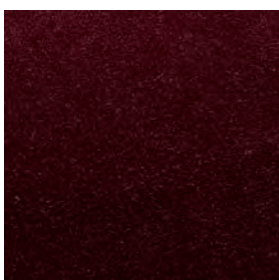
CA7832/078



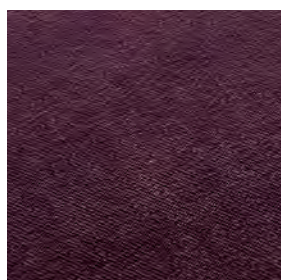
CA7832/079



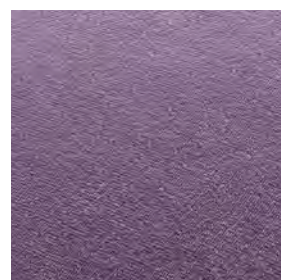
CA7832/080



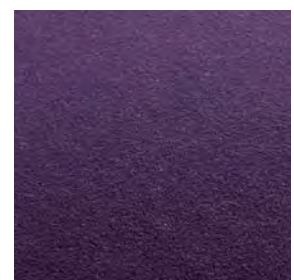
CA7832/081



CA7832/082



CA7832/083



CA7832/084

Textiles City Velvet



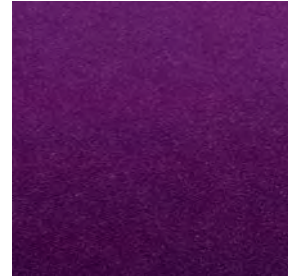
CA7832/085



CA7832/086



CA7832/087



CA7832/088



CA7832/089



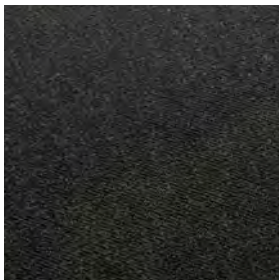
CA7832/090



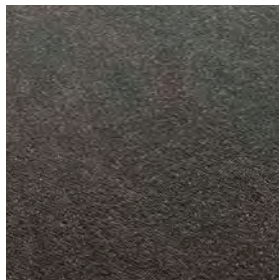
CA7832/091



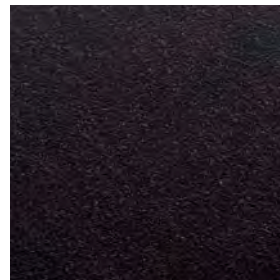
CA7832/092



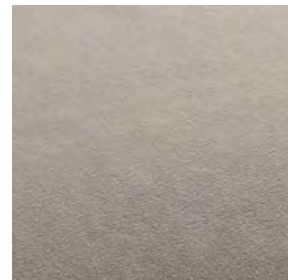
CA7832/093



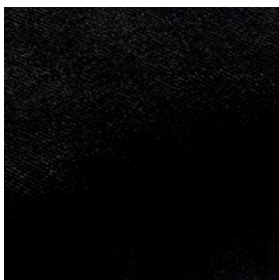
CA7832/094



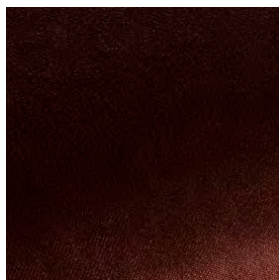
CA7832/095



CA7832/096



CA7832/099



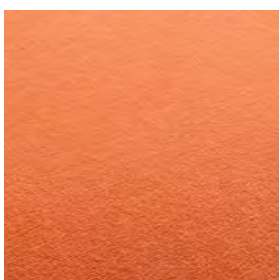
CA7832/126



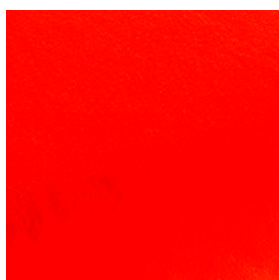
CA7832/130



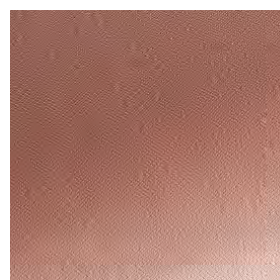
CA7832/160



CA7832/161



CA7832/162

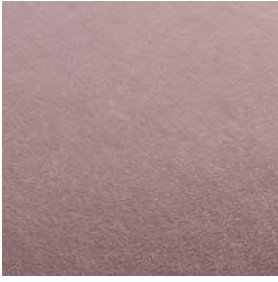


CA7832/165



CA7832/170

Textiles City Velvet



CA7832/180



CA7832/181



CA7832/184



CA7832/186



CA7832/234



CA7832/263

# Divina 3

Divina is a full-cloth product, which means that it is manufactured by weaving the yarn in a coarse linen hose casing, after which, it is subjected to mechanical processing using very high temperatures, at the same time as it is being coloured. This creates a situation where the surface becomes smooth, directionless and uniform in a manner very similar to the properties of felt.

<b>Category</b>	Kvadrat upholstery	<b>Fire Tests</b>	AS/NZS 1530.3 • BS 5852 Crib 5 • BS 5852 part 1 • BS 5867 part 2 type B • IMO FTP Code 2010 Part 8 • NF D 60 013 • NFPA 260 • SN 198 898 5.3 with treatment • UNI 9175 1IM • US Cal. Bull. 117-2013 • EN 1021-1/2 • EN 13501, C-s1, d0, glued • NFPA 701 with treatment • ASTM E84 Class B Unadhered • ASTM E84 Class A Adhered • ÖNORM B1/Q1 • GB 50222 B1 with treatment (Chinese)
<b>Price Group</b>	5	<b>Fastness to rubbing</b>	4-5 (Dry) 4-5 (Wet)
<b>Pattern</b>	Solid	<b>Airflow</b>	678 Pa s/m
<b>Composition</b>	100% new wool	<b>Absorption</b>	0.60/Class C (Absorption flat) 0.70/Class C (Absorption folded)
<b>Width</b>	Approx. 150 cm (Approx. 59")	<b>Seam Slippage</b>	2 mm (warp), 2 mm (weft)
<b>Weight</b>	840 g/lin. m (27.09 oz/ly)		
<b>Repeat</b>	Approx. 0/0 cm (Approx. 0"/0")		
<b>Durability</b>	45,000 Martindale		
<b>Pilling</b>	3 (ISO 1-5)		
<b>Lightfastness</b>	5-6		

Textiles Divina 3



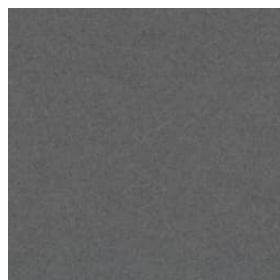
Divina 3  
0120



Divina 3  
0154



Divina 3  
0171



Divina 3  
0173



Divina 3  
0181



Divina 3  
0191



Divina 3  
0224



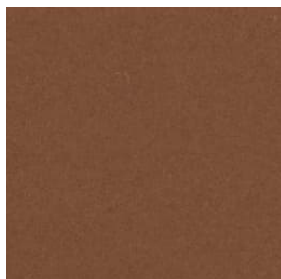
Divina 3  
0236



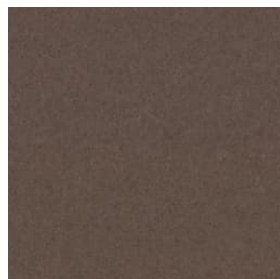
Divina 3  
0246



Divina 3  
0334



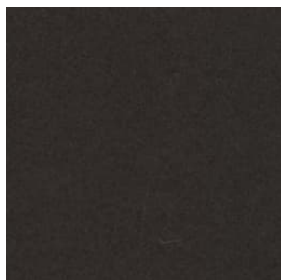
Divina 3  
0346



Divina 3  
0356



Divina 3  
0376



Divina 3  
0384



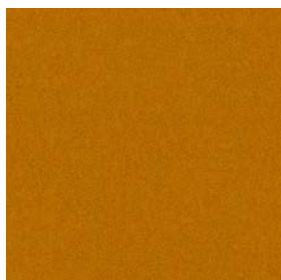
Divina 3  
0393



Divina 3  
0426



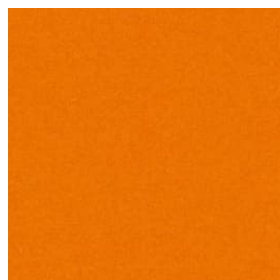
Divina 3  
0444



Divina 3  
0462



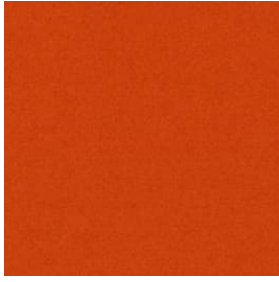
Divina 3  
0526



Divina 3  
0536



Textiles Divina 3



Divina 3  
0542



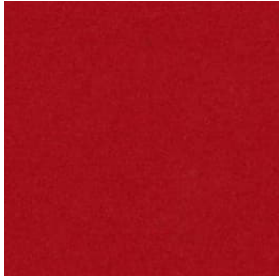
Divina 3  
0552



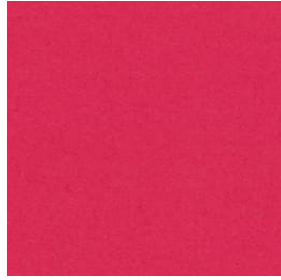
Divina 3  
0562



Divina 3  
0584



Divina 3  
0623



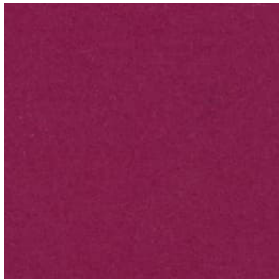
Divina 3  
0626



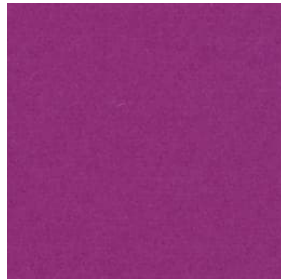
Divina 3  
0636



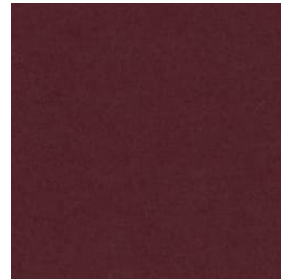
Divina 3  
0652



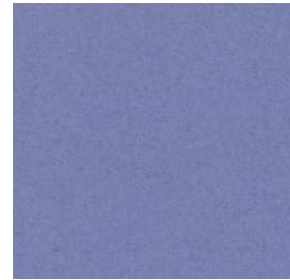
Divina 3  
0662



Divina 3  
0666



Divina 3  
0671



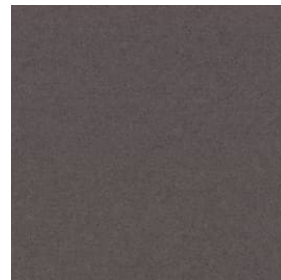
Divina 3  
0676



Divina 3  
0684



Divina 3  
0686



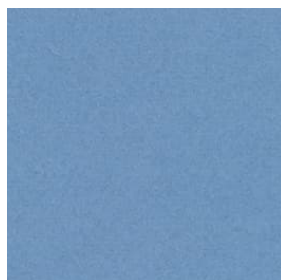
Divina 3  
0691



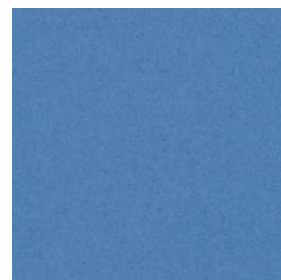
Divina 3  
0692



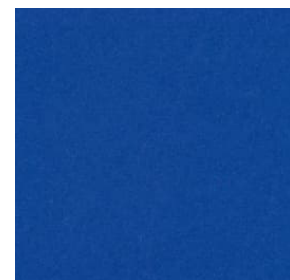
Divina 3  
0696



Divina 3  
0712



Divina 3  
0742



Divina 3  
0756

Textiles Divina 3



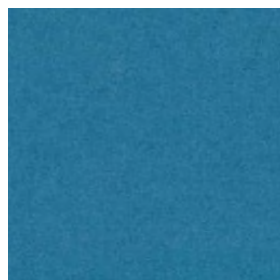
Divina 3  
0782



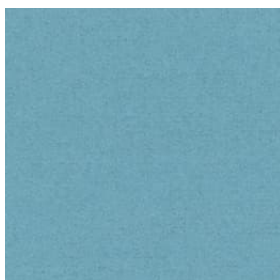
Divina 3  
0791



Divina 3  
0793



Divina 3  
0826



Divina 3  
0836



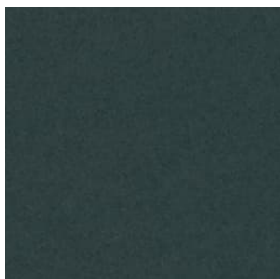
Divina 3  
0846



Divina 3  
0856



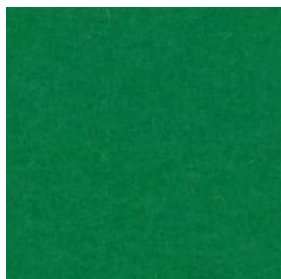
Divina 3  
0876



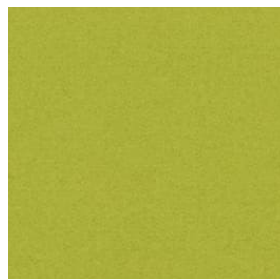
Divina 3  
0886



Divina 3  
0893



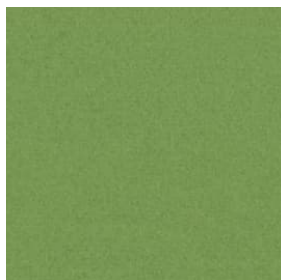
Divina 3  
0922



Divina 3  
0936



Divina 3  
0944



Divina 3  
0956



Divina 3  
0966



Divina 3  
0984

# Divina MD

Divina MD is an upholstery textile designed by Finn Sködt. Available in sophisticated, rich colours, which reveal hidden depths as the perspective of the viewer changes, it makes a strong colour statement.

<b>Category</b>	Kvadrat upholstery	<b>Fire Tests</b>	AS/NZS 1530.3 • BS 5852 Crib 5 • BS 5852 part 1 • BS 5867 part 2 type B • IMO FTP Code 2010 Part 8 • NF D 60 013 • NFPA 260 • SN 198 898 5.3 with treatment • UNI 9175 1IM • US Cal. Bull. 117-2013 • EN 1021-1/2 • EN 13501, C-s1, d0, glued • NFPA 701 with treatment • ASTM E84 Class B Unadhered • ASTM E84 Class A Adhered • ÖNORM B1/Q1 • GB 50222 B1 with treatment (Chinese) (Chinese)
<b>Price Group</b>	5	<b>Fastness to rubbing</b>	4-5 (Dry) 4-5 (Wet)
<b>Pattern</b>	Solid	<b>Airflow</b>	678 Pa s/m
<b>Composition</b>	100% new wool	<b>Absorption</b>	0.60/Class C (Absorption flat) 0.70/Class C (Absorption folded)
<b>Width</b>	Approx. 150 cm (Approx. 59")	<b>Seam Slippage</b>	2 mm (warp), 2 mm (weft)
<b>Weight</b>	840 g/lin. m (27.09 oz/ly)		
<b>Repeat</b>	Approx. 0/0 cm (Approx. 0"/0")		
<b>Durability</b>	45,000 Martindale		
<b>Pilling</b>	3 (ISO 1-5)		
<b>Lightfastness</b>	5-6 (ISO 1-8)		

Textiles Divina MD



Divina MD  
0193



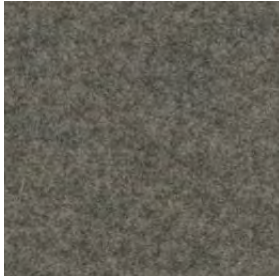
Divina MD  
0203



Divina MD  
0213



Divina MD  
0293



Divina MD  
0343



Divina MD  
0353



Divina MD  
0363



Divina MD  
0413



Divina MD  
0433



Divina MD  
0453



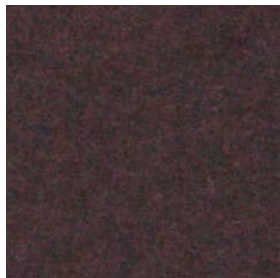
Divina MD  
0613



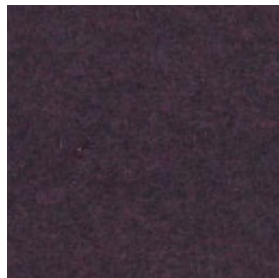
Divina MD  
0633



Divina MD  
0653



Divina MD  
0673



Divina MD  
0683



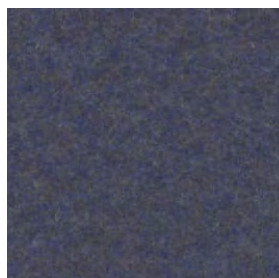
Divina MD  
0713



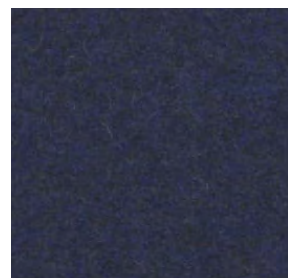
Divina MD  
0733



Divina MD  
0743

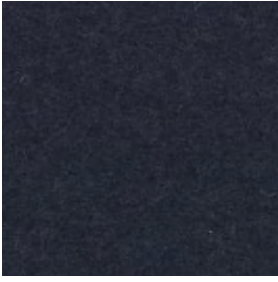


Divina MD  
0753



Divina MD  
0773

Textiles Divina MD



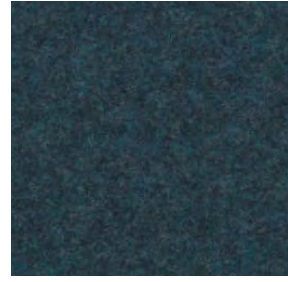
Divina MD  
0783



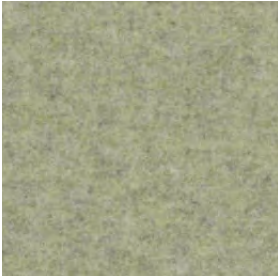
Divina MD  
0813



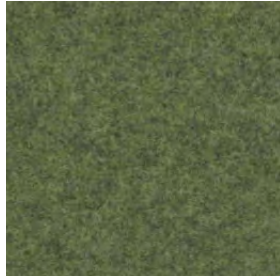
Divina MD  
0843



Divina MD  
0873



Divina MD  
0913



Divina MD  
0943



Divina MD  
0973



# Divina Melange 3

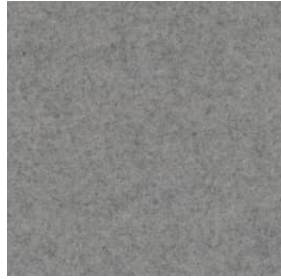
Divina Melange 3 is a vibrant piece-dyed woollen upholstery textile reminiscent of felt. Cheerfully simple, it comes in a fresh, versatile palette by artist and designer Finn Sködt.

<b>Category</b>	Kvadrat upholstery	<b>Fire Tests</b>	AS/NZS 1530.3 • BS 5852 Crib 5 • BS 5852 part 1 • BS 5867 part 2 type B • IMO FTP Code 2010 Part 8 • NF D 60 013 • NFPA 260 • SN 198 898 5.3 with treatment • UNI 9175 1IM • US Cal. Bull. 117-2013 • EN 1021-1/2 • EN 13501, C-s1, d0, glued • Chinese GB 50222B1 with treatment • ÖNORM B1/Q1 • NFPA 701 with treatment • ASTM E84 Class B Unadhered • ASTM E84 Class A Adhered
<b>Price Group</b>	5	<b>Fastness to rubbing</b>	5 (Dry) 3-4 (Wet)
<b>Pattern</b>	Solid	<b>Airflow</b>	678 Pa s/m
<b>Composition</b>	100% new wool	<b>Absorption</b>	0.60/Class C (Absorption flat) 0.70/Class C (Absorption folded)
<b>Width</b>	Approx. 150 cm (Approx. 59")	<b>Seam Slippage</b>	2 mm (warp), 2 mm (weft)
<b>Weight</b>	840 g/lin. m (27.09 oz/ly)		
<b>Repeat</b>	Approx. 0/0 cm (Approx. 0"/0")		
<b>Durability</b>	45,000 Martindale		
<b>Pilling</b>	3 (ISO 1-5)		
<b>Lightfastness</b>	6-7		

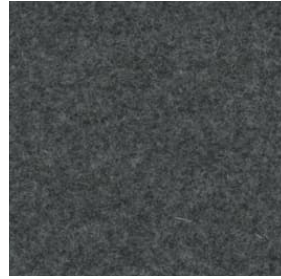
Textiles Divina Melange 3



Divina Melange 3  
0120



Divina Melange 3  
0147



Divina Melange 3  
0170



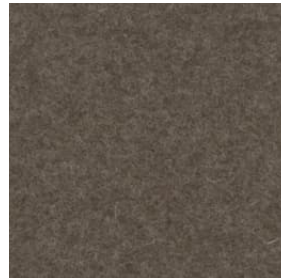
Divina Melange 3  
0180



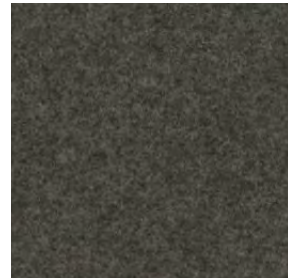
Divina Melange 3  
0227



Divina Melange 3  
0237



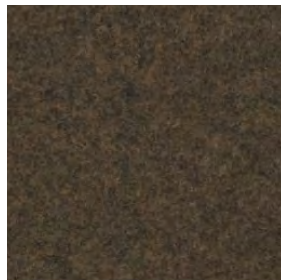
Divina Melange 3  
0260



Divina Melange 3  
0277



Divina Melange 3  
0280



Divina Melange 3  
0367



Divina Melange 3  
0427



Divina Melange 3  
0457



Divina Melange 3  
0467



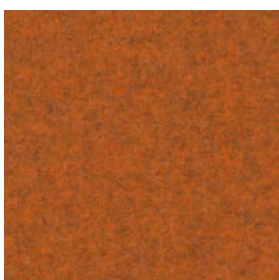
Divina Melange 3  
0471



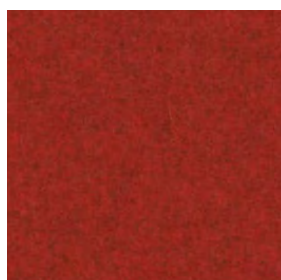
Divina Melange 3  
0517



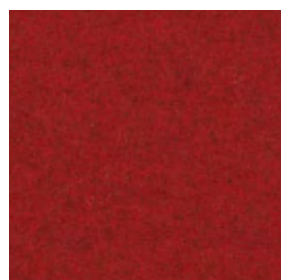
Divina Melange 3  
0527



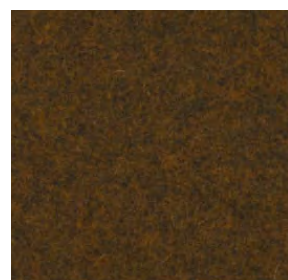
Divina Melange 3  
0547



Divina Melange 3  
0557



Divina Melange 3  
0567



Divina Melange 3  
0571

Textiles Divina Melange 3



Divina Melange 3  
0581



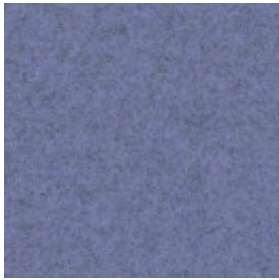
Divina Melange 3  
0597



Divina Melange 3  
0617



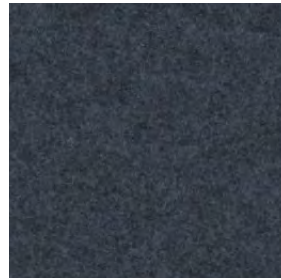
Divina Melange 3  
0620



Divina Melange 3  
0647



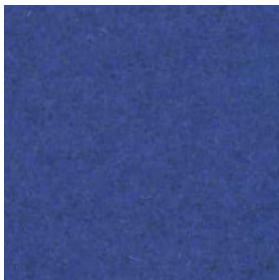
Divina Melange 3  
0677



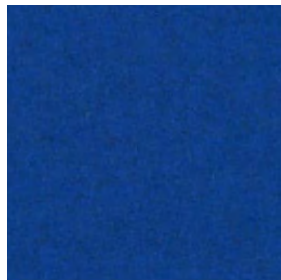
Divina Melange 3  
0687



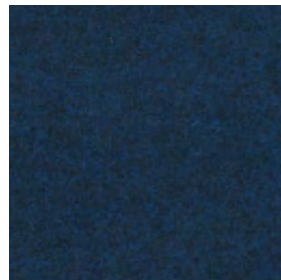
Divina Melange 3  
0731



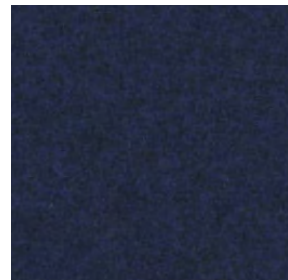
Divina Melange 3  
0747



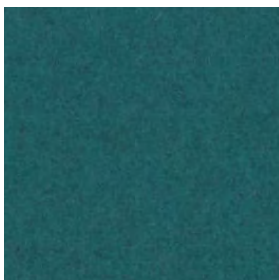
Divina Melange 3  
0757



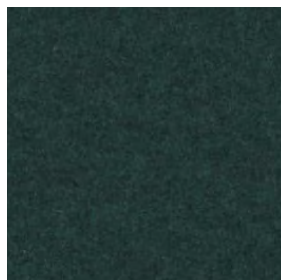
Divina Melange 3  
0777



Divina Melange 3  
0787



Divina Melange 3  
0821



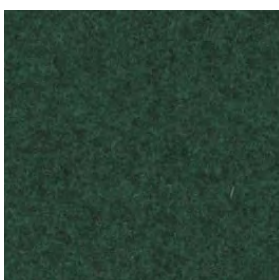
Divina Melange 3  
0871



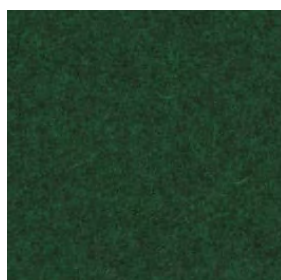
Divina Melange 3  
0917



Divina Melange 3  
0937



Divina Melange 3  
0967



Divina Melange 3  
0977



# Hallingdal 65

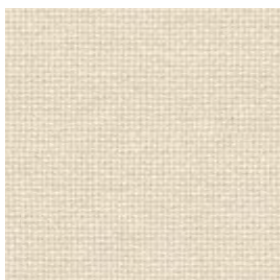
Kvadrat's first textile 'Hallingdal' has become the archetype of woollen textiles. The very durable upholstery fabric was originally designed in 1965 by Nanna Ditzel, and is now available in a version with an updated colour scale: Hallingdal 65.

Hallingdal 65 is made of wool and viscose, which complement each other well: the wool provides excellent durability and flexibility, whilst the viscose adds brilliance and depth to the colour. Both materials are dyed before they are spun, which highlights the rich texture of the fabric.

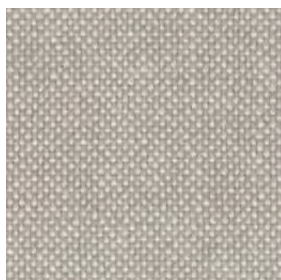


<b>Category</b>	Kvadrat upholstery	<b>Fire Tests</b>	AS/NZS 1530.3 • BS 5852 Crib 5 • BS 5852 part 1 • IMO FTP Code 2010 Part 8 • NF D 60 013 • NFPA 260 • UNI 9175 1IM • US Cal. Bull. 117-2013 • EN 1021-1/2 • ASTM E84 Class A Adhered • SN 198 898 5.3 with treatment • ÖNORM B1/Q1 • GB 50222 B1 with treatment (Chinese) • AS/NZS 3837 class 2 • ASTM E84 Class B Unadhered
<b>Price Group</b>	5	<b>Fastness to rubbing</b>	4-5 (Dry) 3-4 (Wet)
<b>Pattern</b>	Solid	<b>Airflow</b>	182 Pa s/m
<b>Composition</b>	70% new wool 30% viscose	<b>Absorption</b>	0.45/Class D (Absorption flat) 0.70/Class C (Absorption folded)
<b>Width</b>	Approx. 130 cm (Approx. 51")	<b>Seam Slippage</b>	4.5 mm (warp), 4 mm (weft)
<b>Weight</b>	795 g/lin. m (25.64 oz/ly)		
<b>Repeat</b>	Approx. 0/0 cm (Approx. 0"/0")		
<b>Durability</b>	100,000 Martindale		
<b>Pilling</b>	3-4 (ISO 1-5)		
<b>Lightfastness</b>	7		

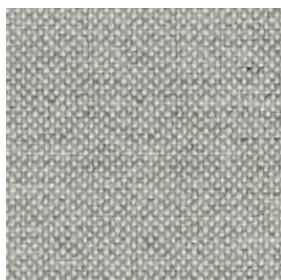
Textiles Hallingdal 65



Hallingdal 65  
0100



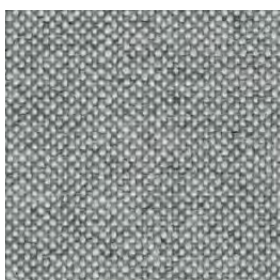
Hallingdal 65  
0103



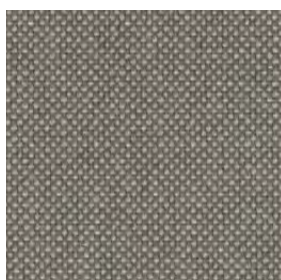
Hallingdal 65  
0110



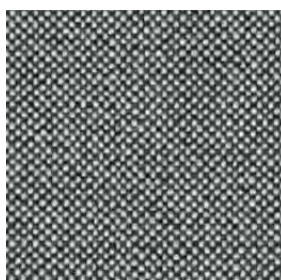
Hallingdal 65  
0113



Hallingdal 65  
0116



Hallingdal 65  
0123



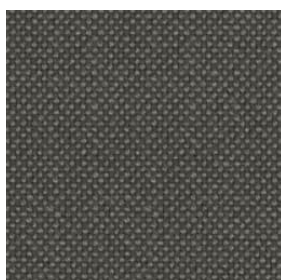
Hallingdal 65  
0126



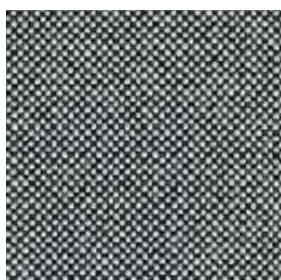
Hallingdal 65  
0130



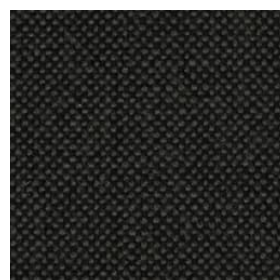
Hallingdal 65  
0143



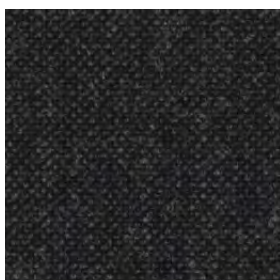
Hallingdal 65  
0153



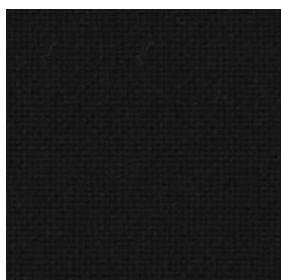
Hallingdal 65  
0166



Hallingdal 65  
0173



Hallingdal 65  
0180



Hallingdal 65  
0190



Hallingdal 65  
0200



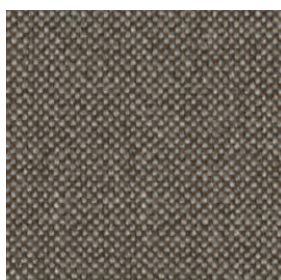
Hallingdal 65  
0220



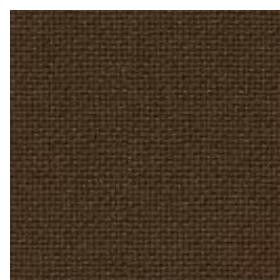
Hallingdal 65  
0224



Hallingdal 65  
0227

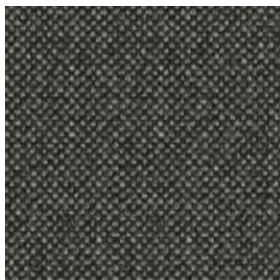


Hallingdal 65  
0270

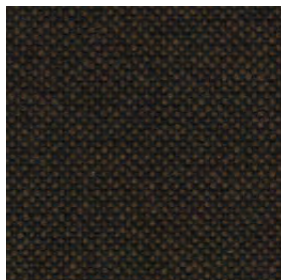


Hallingdal 65  
0350

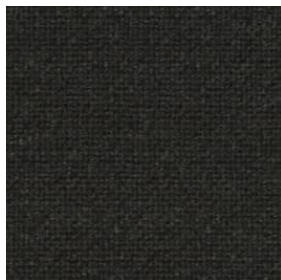
Textiles Hallingdal 65



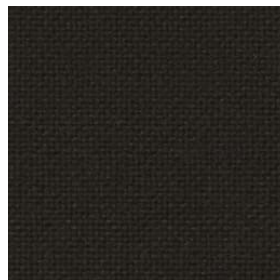
Hallingdal 65  
0368



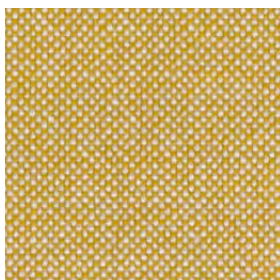
Hallingdal 65  
0370



Hallingdal 65  
0376



Hallingdal 65  
0390



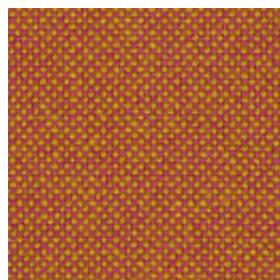
Hallingdal 65  
0407



Hallingdal 65  
0420



Hallingdal 65  
0457



Hallingdal 65  
0526



Hallingdal 65  
0547



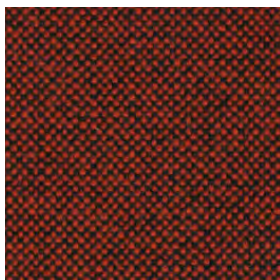
Hallingdal 65  
0563



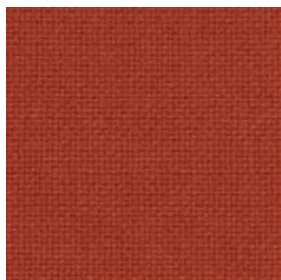
Hallingdal 65  
0573



Hallingdal 65  
0590



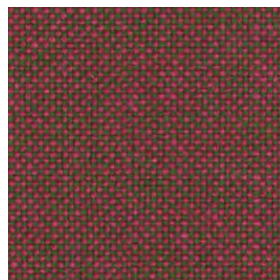
Hallingdal 65  
0596



Hallingdal 65  
0600



Hallingdal 65  
0657



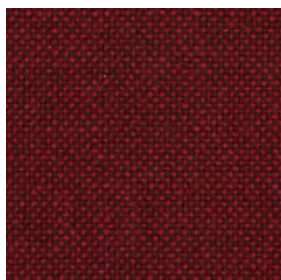
Hallingdal 65  
0660



Hallingdal 65  
0674



Hallingdal 65  
0680



Hallingdal 65  
0687

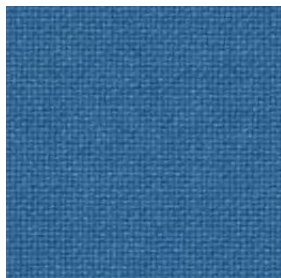


Hallingdal 65  
0694

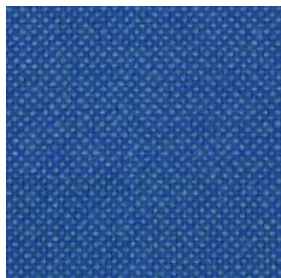
Textiles Hallingdal 65



Hallingdal 65  
0702



Hallingdal 65  
0723



Hallingdal 65  
0733



Hallingdal 65  
0750



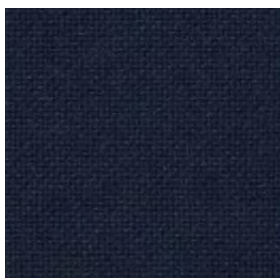
Hallingdal 65  
0753



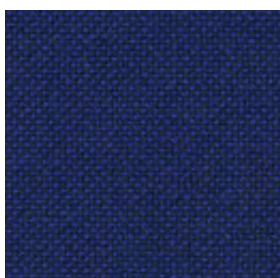
Hallingdal 65  
0754



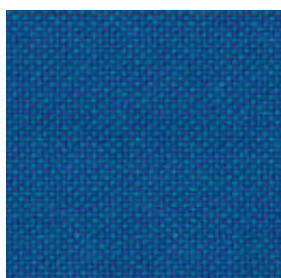
Hallingdal 65  
0763



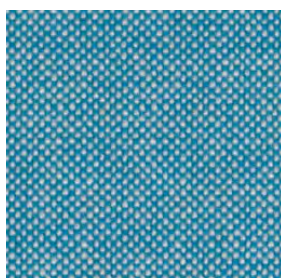
Hallingdal 65  
0764



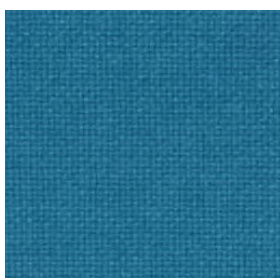
Hallingdal 65  
0773



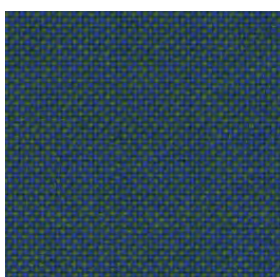
Hallingdal 65  
0810



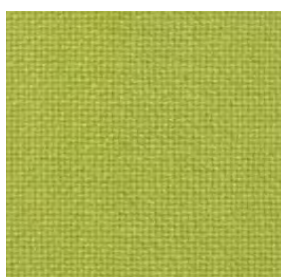
Hallingdal 65  
0840



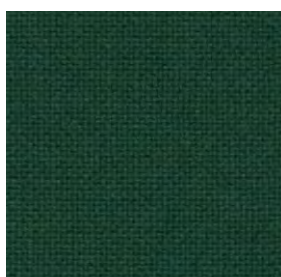
Hallingdal 65  
0850



Hallingdal 65  
0890



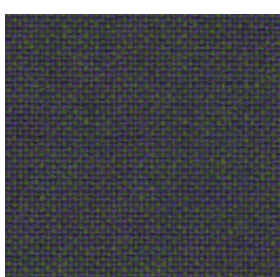
Hallingdal 65  
0907



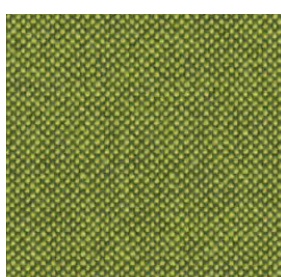
Hallingdal 65  
0944



Hallingdal 65  
0960



Hallingdal 65  
0968



Hallingdal 65  
0980

# Fiord 2

The construction of Fiord combines a mélange yarn with a unicoloured yarn that creates pearl-like dots that play across the textile's surface. This sophisticated expression reflects a key source of inspiration behind the design: moonlight glittering like pearls on the rippling waters of a Norwegian fjord.



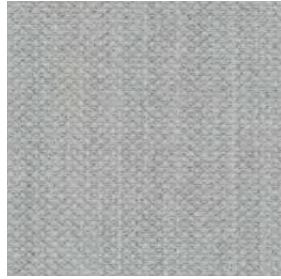
<b>Category</b>	Kvadrat upholstery
<b>Price Group</b>	5
<b>Pattern</b>	Solid
<b>Composition</b>	92% new wool worsted 8% nylon
<b>Width</b>	Approx. 140 cm (Approx. 55")
<b>Weight</b>	500 g/lin. m (16.13 oz/ly)
<b>Repeat</b>	Approx. 0/0 cm (Approx. 0"/0")
<b>Durability</b>	60,000 Martindale
<b>Pilling</b>	4-5 (ISO 1-5)
<b>Lightfastness</b>	6

<b>Fire Tests</b>	BS 5852 crib 5 with treatment • BS 5852 part 1 • IMO FTP Code 2010 Part 8 • NF D 60 013 • NFPA 260 • SN 198 898 5.3 with treatment • UNI 9175 1IM • US Cal. Bull. 117-2013 • EN 1021-1/2 • ASTM E84 Class A Adhered • ASTM E84 Class A Unadhered • AS/NZS 3837 class 2 • GB 50222 B1 with treatment (Chinese) • ÖNORM B1/Q1
<b>Fastness to rubbing</b>	4-5 (Dry) 4-5 (Wet)
<b>Airflow</b>	484 Pa s/m
<b>Seam Slippage</b>	4.5 mm (warp), 5 mm (weft)

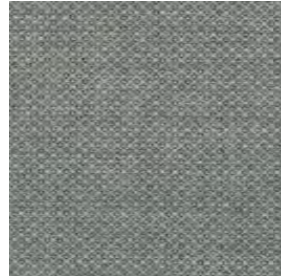
Textiles Fiord 2



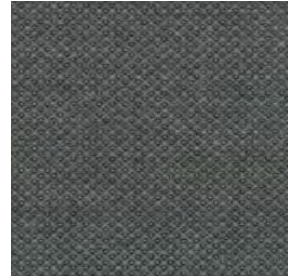
Fiord 2  
0101



Fiord 2  
0121



Fiord 2  
0151



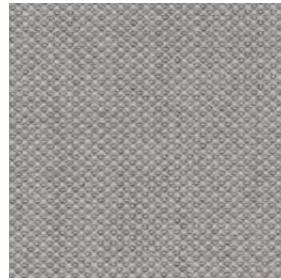
Fiord 2  
0171



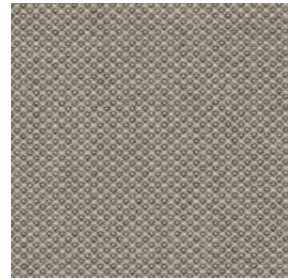
Fiord 2  
0191



Fiord 2  
0201



Fiord 2  
0251



Fiord 2  
0262



Fiord 2  
0271



Fiord 2  
0322



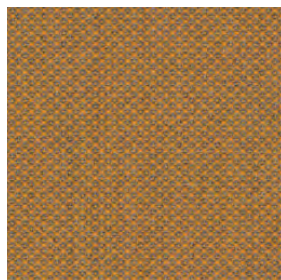
Fiord 2  
0351



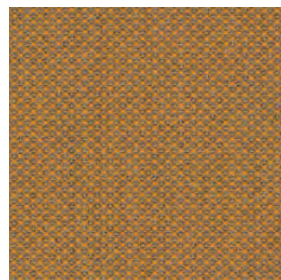
Fiord 2  
0371



Fiord 2  
0391



Fiord 2  
0422



Fiord 2  
0442



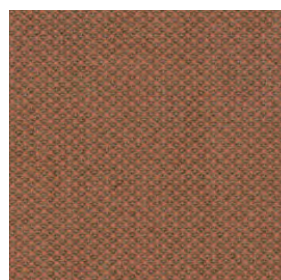
Fiord 2  
0451



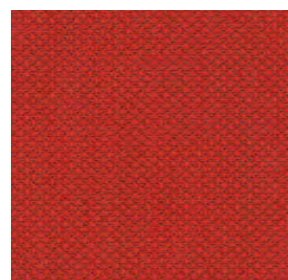
Fiord 2  
0521



Fiord 2  
0551

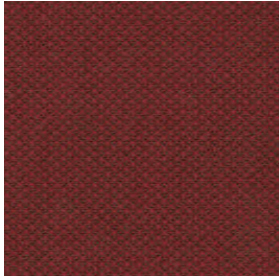


Fiord 2  
0562



Fiord 2  
0571

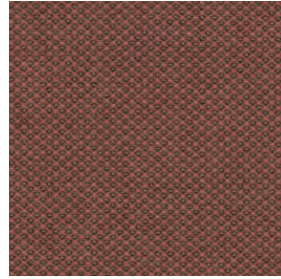
Textiles Fiord 2



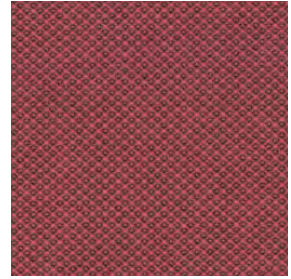
Fiord 2  
0581



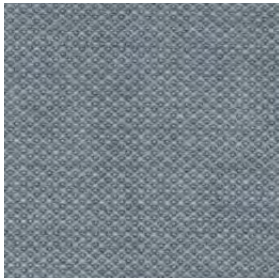
Fiord 2  
0591



Fiord 2  
0642



Fiord 2  
0662



Fiord 2  
0751



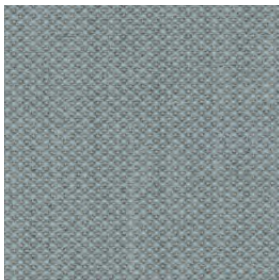
Fiord 2  
0771



Fiord 2  
0782



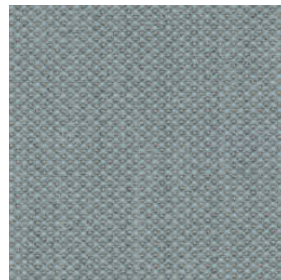
Fiord 2  
0791



Fiord 2  
0821



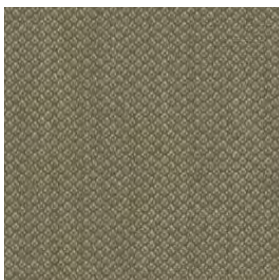
Fiord 2  
0791



Fiord 2  
0821



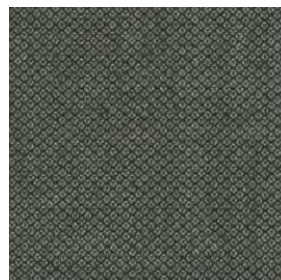
Fiord 2  
0862



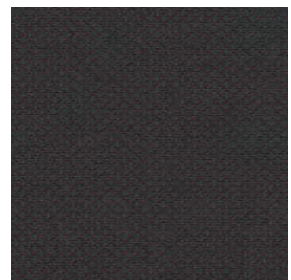
Fiord 2  
0951



Fiord 2  
0961



Fiord 2  
0971



Fiord 2  
0981



Fiord 2  
0991

# Zero

The influence of Parisian couture clothing can be seen in this elegant and irregular bouclé upholstery textile. The pearl effect yarn is used in both warp and weft giving a luxurious handle and a sophisticated appearance. The sixteen colourways range from tonal through to contrasting ‘salt and pepper’ combinations.



<b>Category</b>	Sahco upholstery	<b>Fire Tests</b>	BS 5852 crib 5 with treatment • EN 1021-1 • US Cal. 117-2013 with Cal. 117 compliant interliner • BS 5852 part 1 with treatment
<b>Price Group</b>	6		
<b>Composition</b>	65% cotton 20% polyacrylic 15% polyester		
<b>Width</b>	140 cm (55")		
<b>Weight</b>	740 g/lin. m (23.87 oz/ly)	<b>Seam Slippage</b>	2 mm (warp), 2 mm (weft)
<b>Repeat</b>	0/0 cm ( 0"/0")		
<b>Durability</b>	70,000 Martindale		
<b>Pilling</b>	5 (ISO 1-5)		
<b>Lightfastness</b>	5-6 (ISO 1-8)		



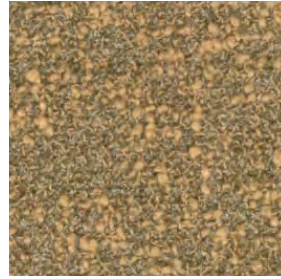
Textiles Zero



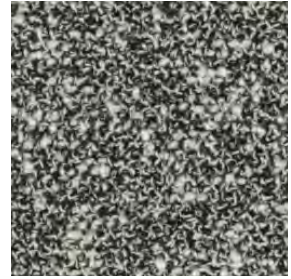
Zero  
0001



Zero  
0002



Zero  
0003



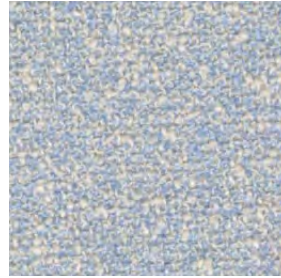
Zero  
0004



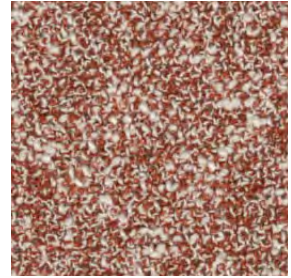
Zero  
0005



Zero  
0006



Zero  
0007



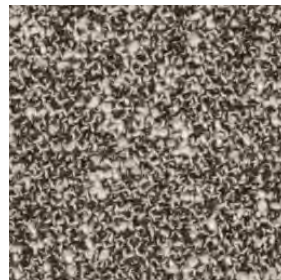
Zero  
0008



Zero  
0009



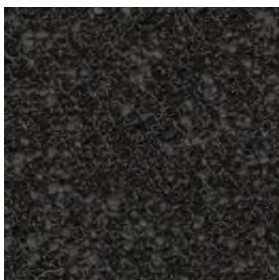
Zero  
0010



Zero  
0011



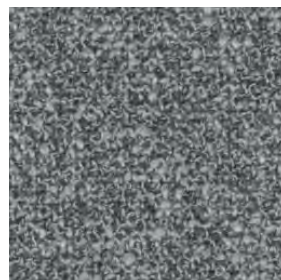
Zero  
0012



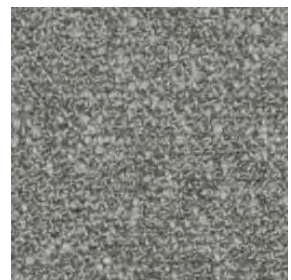
Zero  
0013



Zero  
0014



Zero  
0015



Zero  
0016

# Vidar 4

Originally designed by Fanny Aronsen, Vidar has been re-coloured by Raf Simons, with shades ranging from moss green, dark aubergine, ruby red and midnight blue through to brick and earth tones, and easy neutrals.

Tightly woven, without the irregularities of the other bouclé fabrics within this collection, Vidar has an inviting texture, which variously recalls blackberries, orange peel or the comforting close-knit texture of a favourite sweater.



**Category** Kvadrat/Raf Simons upholstery

**Price Group** 6

**Pattern** Solid

**Composition** 94% new wool 6% nylon

**Width** Approx. 140 cm (Approx. 55")

**Weight** 770 g/lin. m (24.84 oz/ly)

**Repeat** Approx. 0/0 cm (Approx. 0"/0")

**Durability** 100,000 Martindale

**Pilling** 4 (ISO 1-5)

**Lightfastness** 7

## Fire Tests

BS 5852 crib 5 with treatment • BS 5852 part 1 • IMO FTP Code 2010 Part 8 • NF D 60 013 • NFPA 260 • UNI 9175 1IM • US Cal. Bull. 117-2013 • EN 1021-1/2 • AS/NZS 3837 class 2 • GB 50222 B1 with treatment (Chinese) • SN 198 898 5.3 with treatment • IMO FTP Code 2010 Part 7 with treatment

**Fastness to rubbing** 3-4 (Dry) 3 (Wet)

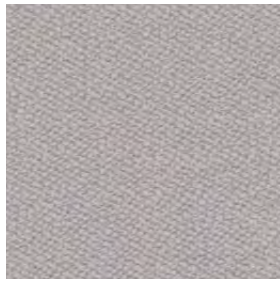
**Airflow** 367 Pa s/m

**Absorption** 0.55/Class D (Absorption flat)

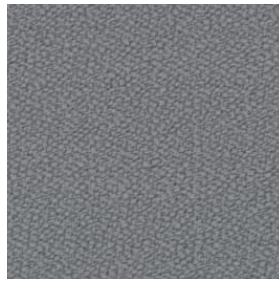
Textiles Vidar 4



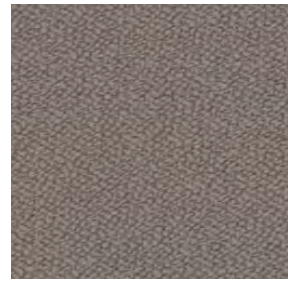
Vidar 4  
0106



Vidar 4  
0123



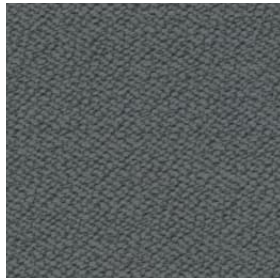
Vidar 4  
0133



Vidar 4  
0143



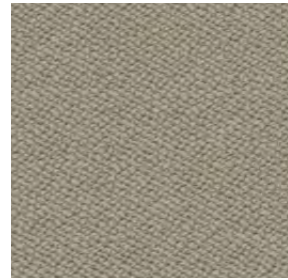
Vidar 4  
0146



Vidar 4  
0152



Vidar 4  
0182



Vidar 4  
0222



Vidar 4  
0323



Vidar 4  
0333



Vidar 4  
0353



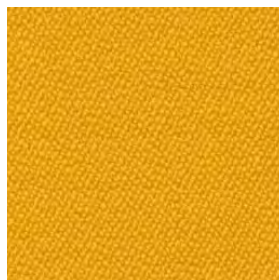
Vidar 4  
0363



Vidar 4  
0386



Vidar 4  
0443



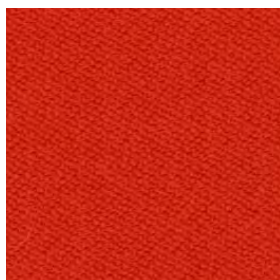
Vidar 4  
0456



Vidar 4  
0472



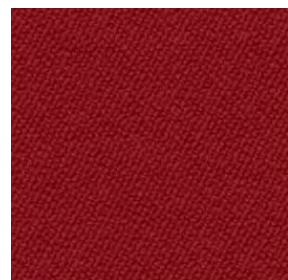
Vidar 4  
0526



Vidar 4  
0542

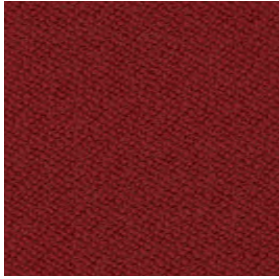


Vidar 4  
0554



Vidar 4  
0556

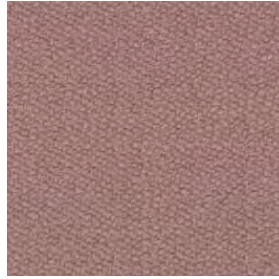
Textiles Vidar 4



Vidar 4  
0582



Vidar 4  
0622



Vidar 4  
0633



Vidar 4  
0653



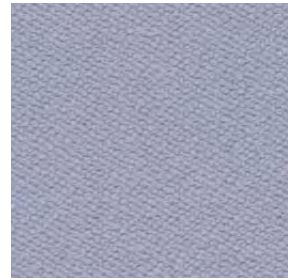
Vidar 4  
0656



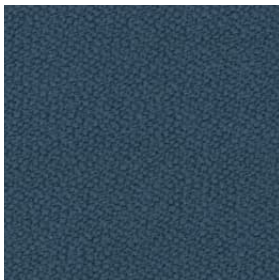
Vidar 4  
0676



Vidar 4  
0693



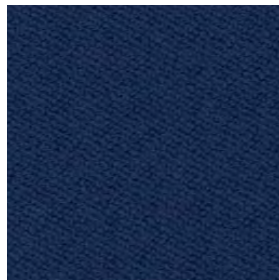
Vidar 4  
0723



Vidar 4  
0733



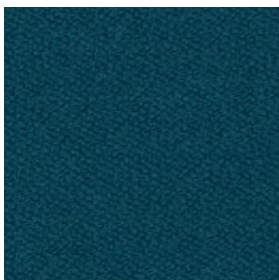
Vidar 4  
0743



Vidar 4  
0772



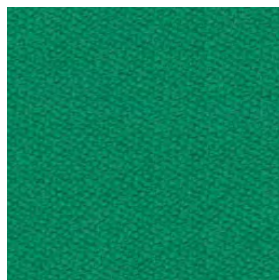
Vidar 4  
0786



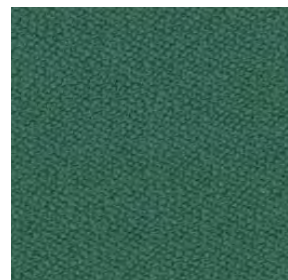
Vidar 4  
0872



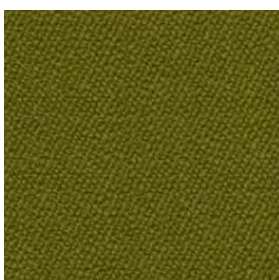
Vidar 4  
0913



Vidar 4  
0932



Vidar 4  
0943



Vidar 4  
0956



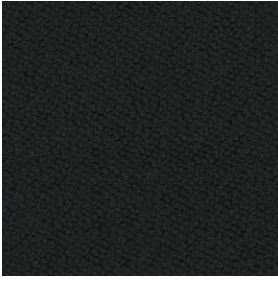
Vidar 4  
0972



Vidar 4  
1062



Vidar 4  
1511



Vidar 4  
1880

# Elle

A curled bouclé fabric, Elle drapes and curves around furniture like an elegant designer coat. The spun bouclé yarn created by blending wool, viscose and acrylic gives the surface a soft tactility. During the subsequent dyeing the yarns take the colour differently, creating captivating shifts within the same tones.

<b>Category</b>	Sahco upholstery	<b>Fire Tests</b>	US Cal. Bull. 117-2013 • BS 5852 crib 5 with treatment • EN 1021-1/2 • BS 5852 part 1 • IMO FTP Code 2010 Part 8
<b>Price Group</b>	7		
<b>Pattern:</b>	Solid		
<b>Composition:</b>	25% cotton 20% viscose 20% polyacrylic 20% wool 15% polyamide		
<b>Width</b>	140 cm (55")	<b>Fastness to rubbing</b>	4-5 (Dry) 4 (Wet)
<b>Weight</b>	900 g/lin. m (29.03 oz/ly)	<b>Seam Slippage</b>	7 mm (warp), 2 mm (weft)
<b>Repeat</b>	0/0 cm (0"/0")		
<b>Durability</b>	70,000 Martindale		
<b>Pilling</b>	4-5 (ISO 1-5)		
<b>Lightfastness:</b>	6 (ISO 1-8)		

Textiles Elle



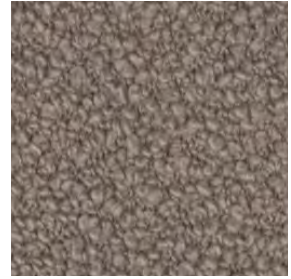
Elle  
0150



Elle  
0180



Elle  
0200



Elle  
0220



Elle  
0230



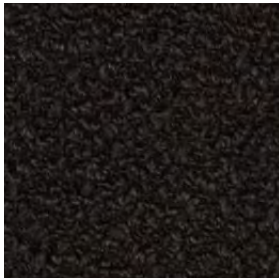
Elle  
0280



Elle  
0290



Elle  
0350



Elle  
0390



Elle  
0480



Elle  
0530



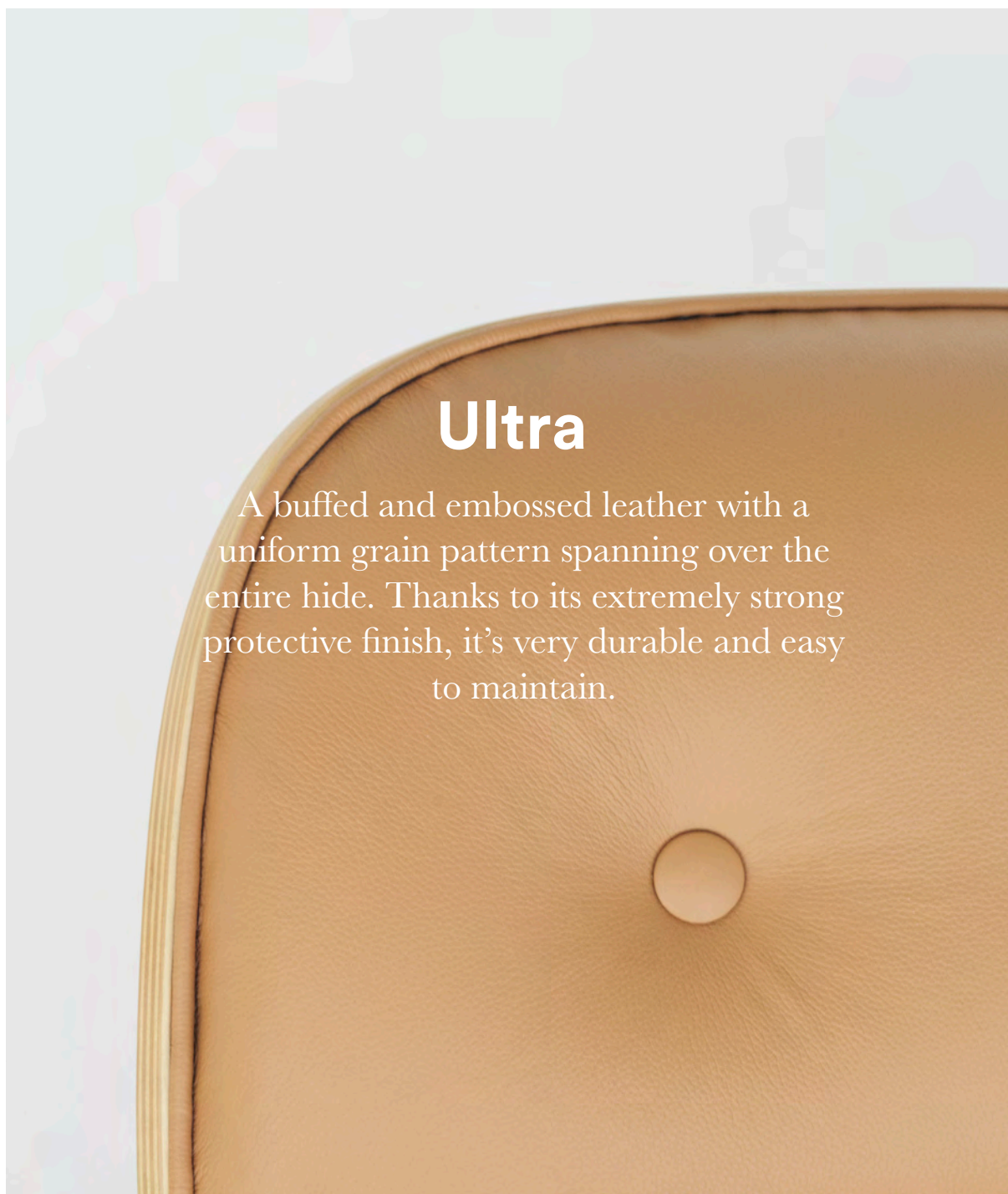
Elle  
0680



Elle  
0750



Elle  
0950



# Ultra

A buffed and embossed leather with a uniform grain pattern spanning over the entire hide. Thanks to its extremely strong protective finish, it's very durable and easy to maintain.

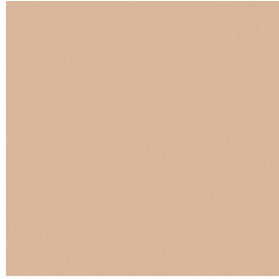
<b>Manufacturer</b>	Sørensen Leather	<b>Color fastness to rubbing</b>	Wet 250 rubs: 4, Dry 500 rubs: 4-5, Perspiration 80 rubs: 4 (DIN EN ISO 11640)
<b>Thickness</b>	0.9 – 1.1 mm	<b>Color fastness to light</b>	6-7 (DIN EN ISO 105-B02)
<b>Origin</b>	Non-European	<b>Flammability test</b>	CA TB 117-2013 – Non-ignition
<b>Finish</b>	Extremely strong surface protection	<b>Cigarette + match</b>	BS EN 1021-1 and 2 – Non-ignition
<b>Tannage</b>	Chrome	<b>Environment</b>	PCP: According to EU Council Directive 76/769/EEC AZO dyes: According to EU Council Directive 76/769/EEC Chrome VI: Our leather does not contain chrome VI REACH: According to European Community Regulation on chemicals and their safe use (EC 1907/2006)
<b>Dye</b>	Water-based aniline dye		
<b>Price Group</b>	7		



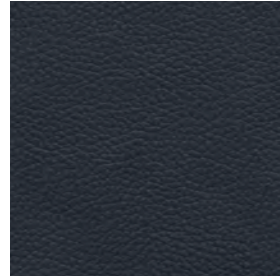
## Leathers Ultra



**Camel**  
41571



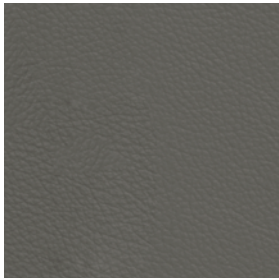
**Honey**  
41572



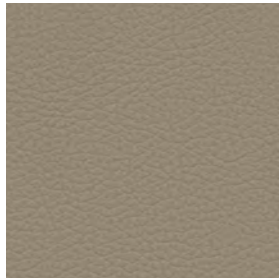
**Navy**  
41573



**Brandy**  
41574



**Lava**  
41575



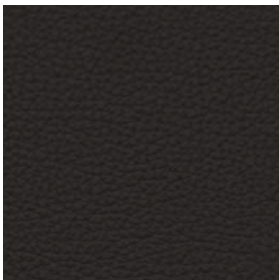
**Altweiss**  
41576



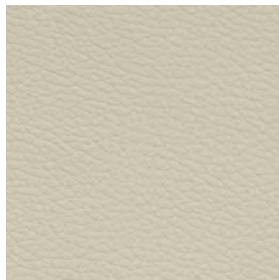
**Poppy**  
41578



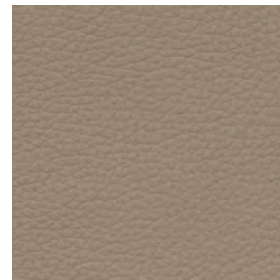
**Brick**  
41579



**Anthrazit**  
41580



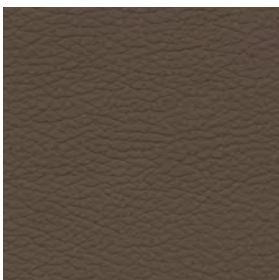
**Eggshell**  
41581



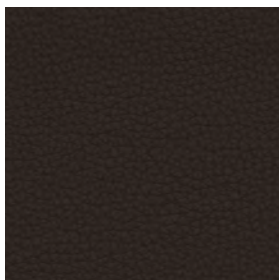
**Earth**  
41584



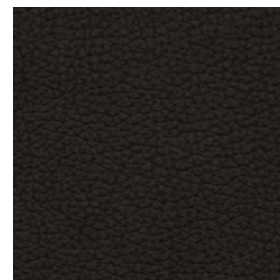
**Grey**  
41585



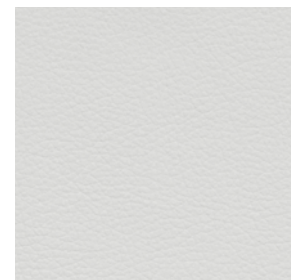
**Safari**  
41586



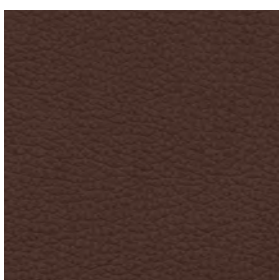
**Chocolate**  
41589



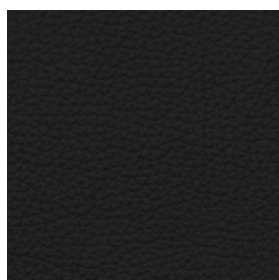
**Black Brown**  
41590



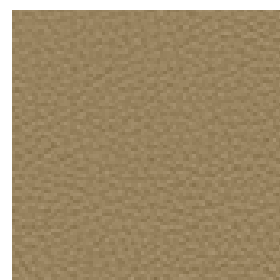
**White**  
41594



**Cognac**  
41598



**Black**  
41599



**Leaf**  
41566

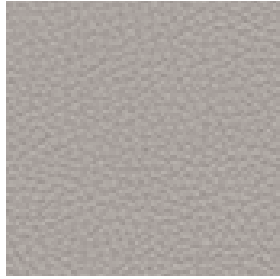


**Marsh**  
41570

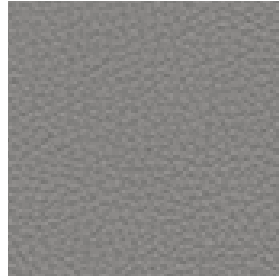
**Leathers Ultra**



**Moss**  
41569



**Oat**  
41568



**Smoke**  
41567

# Imatex

The exclusive textiles from the Italian manufacturer Imatex are enchanting compositions of textures and patterns featuring silk threads and contrasting warps with stunning depth and volume.

Only available on Silo pouf



<b>Manufacturer</b>	Imatex	<b>Abrasion resistance</b>	Albagia: 30.000 martindale Bolgheri: 30.000 martindale Wynwood/Z: 25.000 martindale
<b>Composition</b>	Albagia: 75% cotton, 17% viscose, 8% linnen Bolgheri: 35% viscose, 26% wool, 17% polyamide, 15% silk, 7% linnen Wynwood/Z: 36% acylic, 27% viscose, 11% polyester, 9% cotton, 8% linnen, 6% wool, 2% alpaca, 1% silk	<b>Color fastness to rubbing</b>	Wet:4, Dry:4/5
<b>Weight</b>	Albagia: 540/550 g/m2 Bolgheri: 960/970 g/m2 Wynwood/Z: 750/760 g/m2	<b>Color fastness to light</b>	5
		<b>Pilling</b>	3/4
		<b>Flammability</b>	Bolgheri: BS 5852 Source 0: PASS BS 5852 Source 1: PASS CAL 117: PASS

Textiles Imatex



Albagia 15/330  
201



Albagia 15/330  
214



Albagia 15/330  
288



Bolgheri 96/5461  
LAN7



Bolgheri 96/5461  
LNE4



Bolgheri 96/5461  
LNE8



Wynwood/Z 96Z/5743  
8



Wynwood/Z 96Z/5743  
10



Wynwood/Z 96Z/5743  
13

# Contact

Normann Copenhagen  
Niels Hemmingsens Gade 12,  
1153 Copenhagen, Denmark  
[normann@normann-copenhagen.com](mailto:normann@normann-copenhagen.com)  
+45 35 55 44 59

**normann**

C O P E N H A G E N