

JBL

JBL® STUDIO 6 IN WALL LOUDSPEAKER

EN QUICK START GUIDE

FR GUIDE DE DÉMARRAGE RAPIDE

DE KURZANLEITUNG

ES GUÍA DE INICIO RÁPIDO

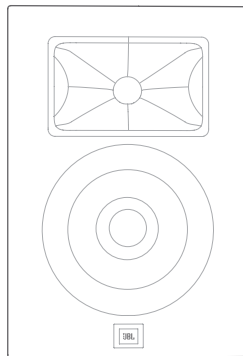
PTBR GUIA DE INÍCIO RÁPIDO

RU КРАТКОЕ РУКОВОДСТВО

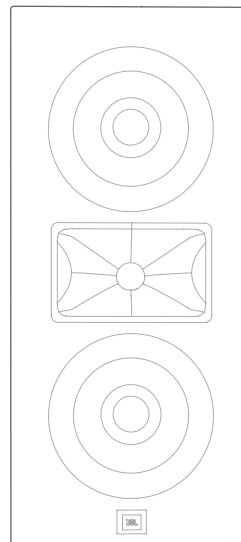
CN 快速入门指南

JP クイックスタートガイド

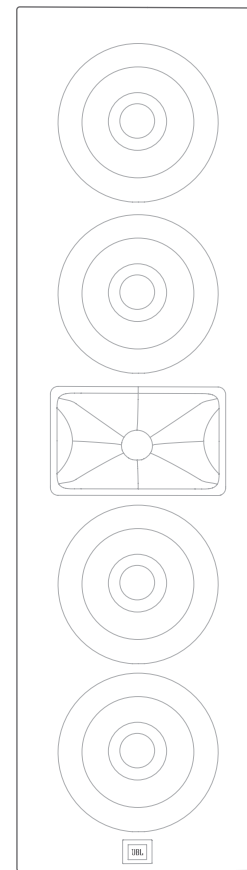
KO 빠른 시작 가이드



Studio 6 6IW
Studio 6 8IW

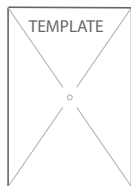
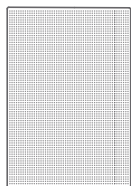
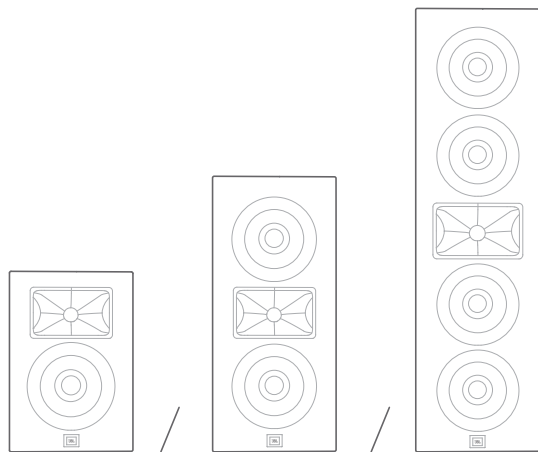


Studio 6 66LCR
Studio 6 88LCR

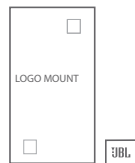


Studio 6 Theater

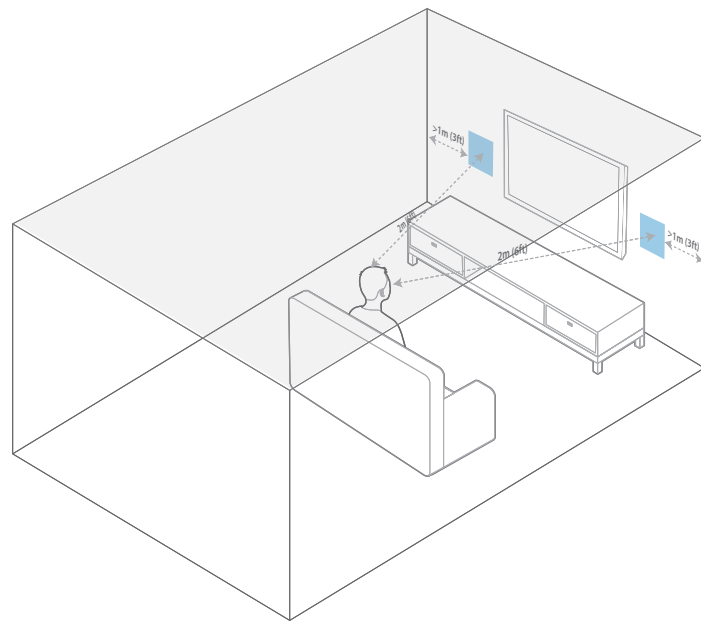
WHAT'S IN THE BOX



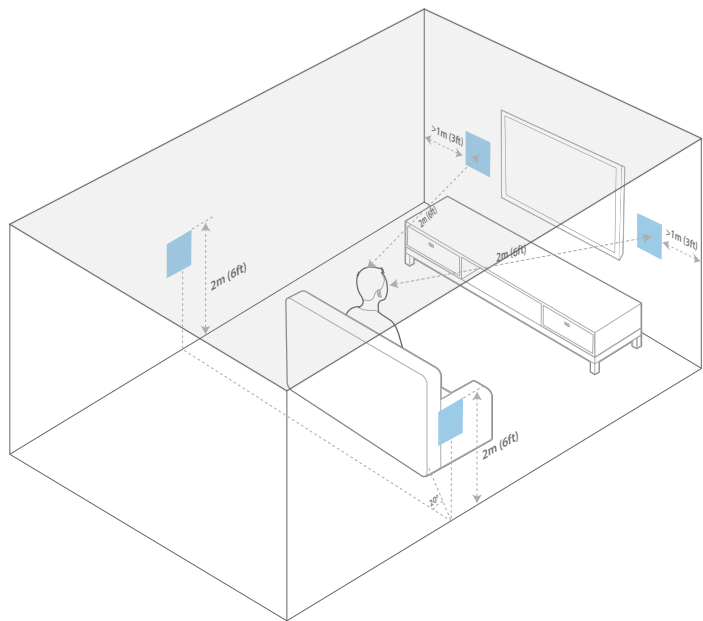
(66LCR / 88LCR /
Theater)



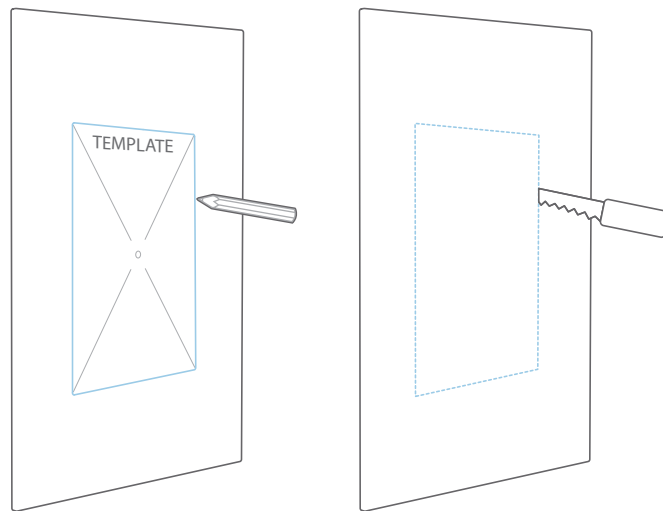
PLACEMENT (In-wall Stereo)



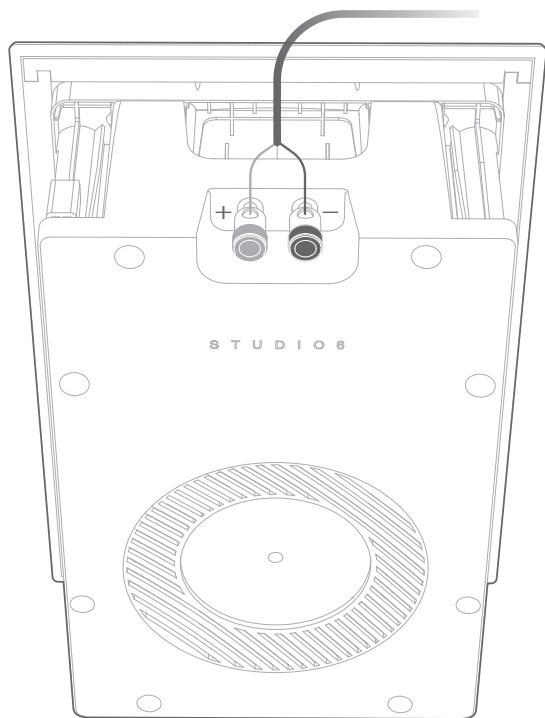
PLACEMENT (In-wall Home Theater)



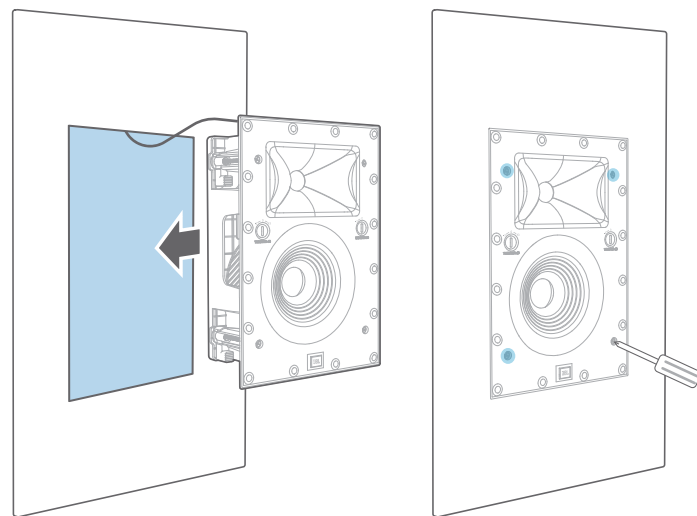
CUT-OUT (In-wall)



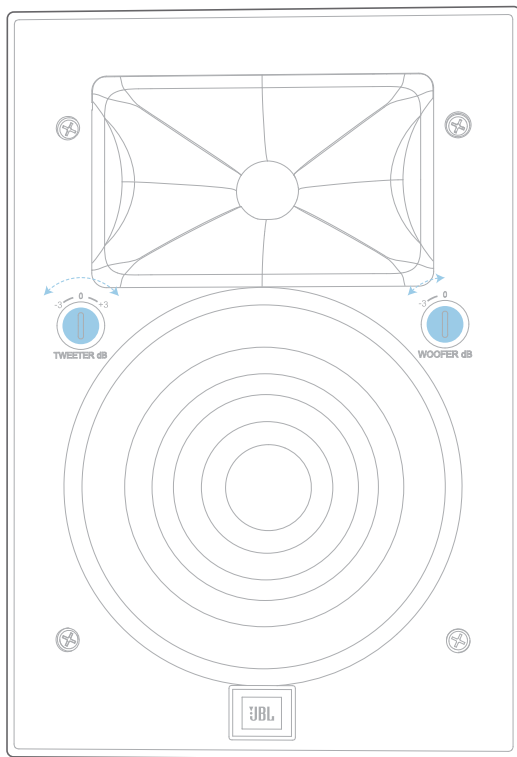
INSTALLATION (Connect Speaker Wire)



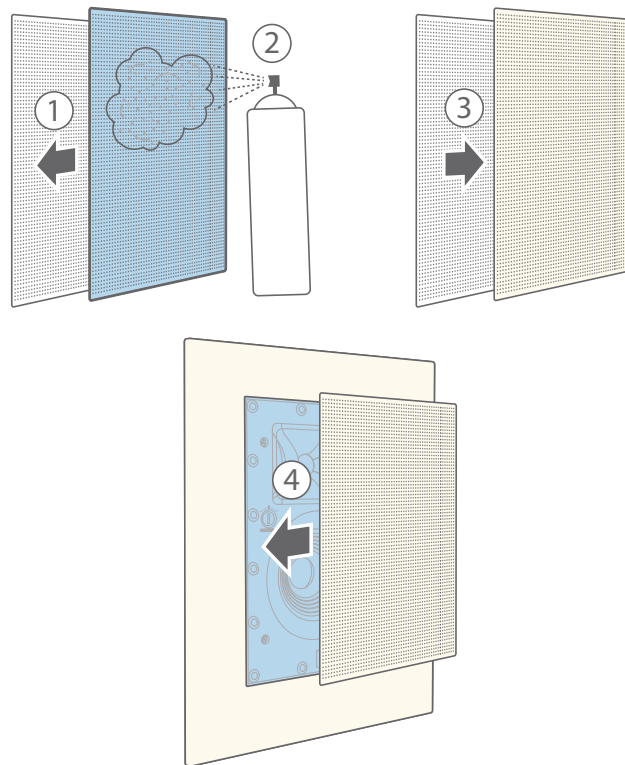
INSTALLATION (Screw into Wall)



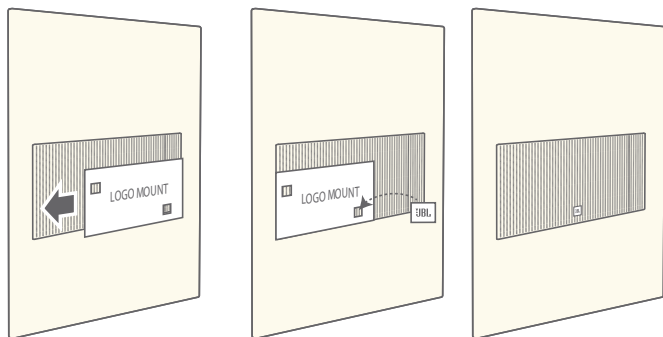
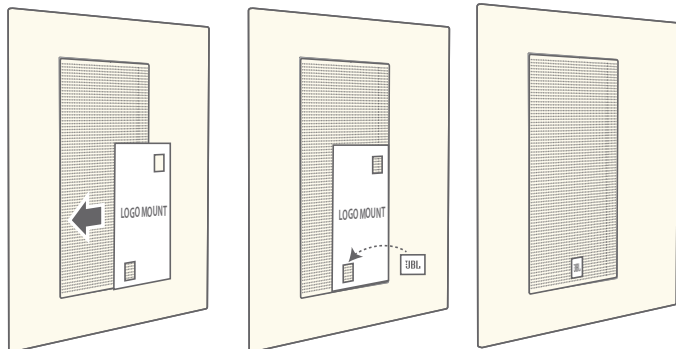
EQ SETTINGS (Bass and Treble Adjustment)



PAINTING



LOGO MOUNT GUIDE (66LCR, 88LCR and Theater only)



WARNING: HARMAN International assumes no responsibility for improper installation of hardware or for any personal injuries or product damages resulting from improper installation or a fallen loudspeaker.

Limited Warranty

JBL speakers are warranted against defects. The duration of the speaker's warranty depends on the laws in the country in which it was purchased. Your local JBL retailer can help you determine the length of your warranty.